

# Transformational Software for Today's Chromatography Labs

Agilent OpenLab CDS



Agilent  
**OpenLab**

# Contents

Summary		Support & Training	
Bring More Flow to Your Workflows	3	Accelerate Time to Value	11
		Everyone Benefits	13
Advantages		Next Steps	14
Standardize Your Lab	4		
Speed Analysis and Review	5		
Take Control of Data Integrity and Compliance	6		
Eliminate Error-Prone Steps and Improve Work Quality	7		
Accelerate Reporting	8		
Extend Functionality	9		
Embrace Remote Working	10		

## Summary

# Bring More Flow to Your Workflows

CDS software can be transformative for chromatography lab operations, maximizing lab efficiency while minimizing cost and complexity.

The question is, which CDS solution can truly deliver on this promise? Which solution can integrate instruments from multiple vendors, automate multiple processes, and protect your lab's data—without a lengthy, unstructured onboarding process?

Look no further than **OpenLab CDS**—a single software system that can help you streamline lab operations from end to end.

With OpenLab CDS you can improve the speed and accuracy of analysis, support working remotely, maintain data integrity and compliance, and adapt quickly to new requirements.

In short, you can put the flow back in your workflows. Now let's take a closer look at the advantages of OpenLab CDS.

*"OpenLab CDS provided many benefits to our workflow, including our laboratory operations, our IT support group and ultimately assisted us in delivering Next Gen Data Agility."*

### Technical Decision Maker

Global 500 Beverage Company



### Watch videos

- [OpenLab CDS intro video](#)
- [OpenLab CDS video collection page](#)



### Watch customer stories

- [APC customer story](#)
- [Chemours customer story \(part 1\)](#)
- [Chemours customer story \(part 2\)](#)

## Advantages

# Standardize Your Lab

OpenLab CDS provides a single, powerful, comprehensive toolset for controlling your Agilent and non-Agilent LC, GC, and single quad MS instruments.



### Integrate

instrument control  
& simplify standard  
laboratory procedures



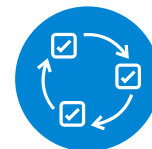
### Eliminate

the need to learn  
multiple software



### Minimize

time-consuming  
configuration from  
user to user



### Accelerate

the onboarding  
process



### Learn more

- [List of supported instruments](#)
- [Support for mass spectrometry](#)
- [Standardize file formats with Allotrope Data Format \(ADF\)](#)
- [Onboard your team faster](#)
- [Networked solutions for your lab](#)

What's more, the scalable, networked architecture of OpenLab CDS can give you faster, better access to instruments and information. Whether your lab has a few instruments or many, OpenLab CDS can scale to meet your needs.

## Advantages

# Speed Analysis and Review

By eliminating manual data entry throughout the analysis, review, and reporting cycle, [OpenLab CDS accelerates your analysis](#) while reducing errors and costs. Lab staff no longer has to enter data into spreadsheets and print reports, which improves productivity and morale. Additionally, OpenLab CDS enables you to:



Review large data sets quickly



Visually identify samples of interest, outliers, and artifacts



Use the best integration parameters every time for every one of your analyses



Spend less time performing calculations and interpreting data



### Learn more

- [Efficient data review and visualization](#)
- [Integration optimizer](#)

## Advantages

# Take Control of Data Integrity and Compliance

Your lab results are only as reliable as the data they're based upon. Yet the complexities of safeguarding and managing lab data today can be daunting, no matter which industry you're in. An essential step is implementing a data system that is equipped with technical controls that enable you to:

- ✓ **Limit system access:** From a single screen, ensure that only authorized personnel make changes to your chromatography data. Assign roles to provide unique levels of access. Provide a unique ID and password for each user.
- ✓ **Protect records:** Ensure that all raw data, metadata, and result data is stored in a protected location. A checksum confirms whether records are valid, invalid, or altered.
- ✓ **Ensure end-to-end work attribution:** Reconstruct the who/what/where/when/why of every change that took place by recording all user activities in secure, time-stamped audit trails.
- ✓ **Document audit trail reviews:** Confirm and document audit trail reviews in one electronic record, so you can review records and audit trails in parallel.
- ✓ **Use e-signatures that conform to regulations:** Permanently link e-signatures to records and to ensure they're present whenever the records are displayed or printed.



### Learn more

- [Everyday data integrity](#)
- [Data Integrity Resource Center](#)
- [Support for Title 21 CFR Part 11 and Annex 11 Compliance](#)

### Data quality

In addition to ensuring **everyday data integrity** and facilitating rigorous regulatory compliance, OpenLab CDS also helps improve work quality by minimizing errors and reducing inaccurate results.

## Advantages

# Eliminate Error-Prone Steps and Improve Work Quality



### Sample Scheduler

Performing repetitive manual processes inevitably leads to mistakes. [Sample Scheduler for OpenLab](#) automates the scheduling and assignment of samples, greatly reducing those errors.



### Custom Calculator

Similarly, the [Custom Calculator Tool](#) in OpenLab CDS allows you to reliably and automatically compute unique values. This removes error-prone calculation steps and allows you to leverage the traceability capabilities of the software. It's an easy, versatile, reliable alternative to spreadsheets.



### Reporting

Now you can avoid errors caused by manually transcribing data to other software. Using [reporting in OpenLab CDS](#), you can generate a simple report file for direct import into your LIMS or other systems.



### Learn more

- [Sample Scheduler for OpenLab](#)
- [Custom Calculator Tool](#)
- [Reporting in OpenLab CDS](#)
- [Automate Data Migration](#)

### Simple, secure, smooth transition to OpenLab CDS

You can even [automate the migration](#) to OpenLab CDS, preserving result sets, methods, and user and instrument information from legacy ChemStation, OpenLab ChemStation, OpenLab EZChrom, and Galaxie CDS software.

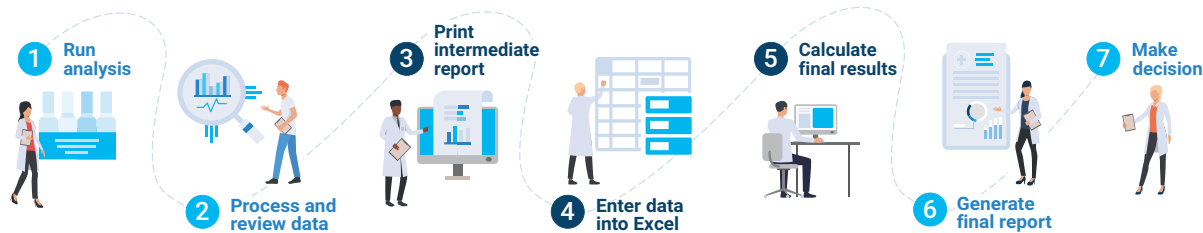
## Advantages

# Accelerate Reporting

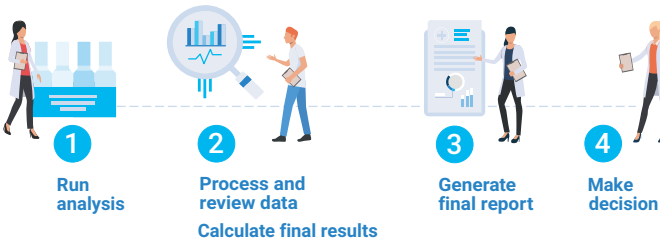
OpenLab CDS also speeds up the reporting process while improving accuracy. Traditional reporting tools tend to be manual with limited formatting and display options. OpenLab CDS provides powerful, versatile capabilities that make report generation fast and easy while eliminating errors and reducing both cost and inefficiency.

There is no longer any need to choose between quicker turnaround times and higher quality in your reporting. With the consolidated, automated workflows OpenLab CDS, you get both.

Typical results workflow



OpenLab CDS results workflow



### Learn more

- [Reporting in OpenLab CDS](#)
- [Reporting templates, services, and training](#)



## Advantages

# Extend Functionality with Flexible Add-Ons

With OpenLab CDS you have a single software platform that can easily be extended to meet your specific needs with software add-ons such as:

### Sample Scheduler Software

Get a shortcut to reliable results. Sample Scheduler for OpenLab is an easy-to-use application that simplifies and speeds sample submission. Optionally, integrate with your LIMS to automate common error-prone and time-consuming mistakes.

### GPC/SEC Software

Perform application-specific calibrations and calculations on data acquired with OpenLab CDS. The software supports narrow standard, broad standard, and universal calibrations.

### MatchCompare Software

Automate the time-consuming task of comparing quality control chromatograms of complex samples, and objectively compare unknown samples to a known standard.

### ADFExport

Store data in a standardized way and increase data integrity, scientific reproducibility, and your ability to find, share, and archive data.



#### Learn more

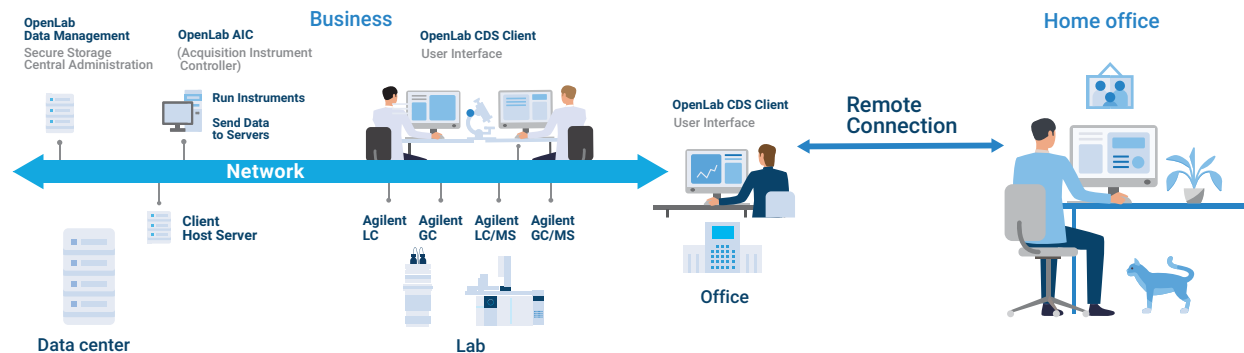
- [See all Chromatography Software add-ons](#)
- [Sample Scheduler Software](#)
- [MatchCompare Software](#)
- [GPC/SEC Software](#)
- [ADFExport](#)

## Advantages

# Embrace Working Remotely

OpenLab CDS makes it easy to support new ways of working remotely—with confidence in your ability to protect users, devices, and data.

We offer a range of flexible [remote access laboratory solutions](#), and OpenLab CDS gives you [virtualization](#), [networking](#), and [cloud options](#) that enable your lab employees to do sample processing, review, and approval securely from home, using a wide range of authorized devices.



### Now your lab employees can:

- Run any instrument in any lab
- Process any data from any instrument
- Review/approve any result from any instrument
- Manage all instruments and permissions from a single location
- Access reports and other information from most web browsers

### This enables your lab to:

- Increase collaboration
- Cut capital expenditures (CapEx)
- Avoid ongoing maintenance and support for server hardware
- Get additional support when and how you need it

In short, you can keep productivity and morale high by making working remotely a success.



### Learn more

- [Virtualization solutions](#)
- [Networking solutions](#)
- [Cloud solutions](#)

## Support & Training

# Accelerate Time to Value

Software can only transform your workflows when it's up and running correctly and users are properly trained and supported. Agilent makes this process fast and non-disruptive with a broad range of world-class support and unparalleled training services, including:

- **Customized implementation services:** Get expert assistance to plan and efficiently execute the implementation of OpenLab CDS in your lab and optimize configurations for your specific processes and requirements.
- **Automated software migration:** OpenLab CDS includes tools to preserve result sets, methods, and user and instrument information from legacy ChemStation, OpenLab ChemStation, and OpenLab EZChrom.
- **Automated data migration:** ChemStation and EZChrom users can easily migrate data and privileges to OpenLab using the automated migration tool included in the software.
- **Automated qualification (QualA):** Perform software qualification and verification tasks to ensure your software is operating as intended.
- **Fast, easy onboarding:** Agilent speeds up the onboarding process by providing on-demand, self-guided learning tools to ensure immediate access to all information you need. It also ensures that after onboarding, your team understands how to access and use all the tools they need to get their work done quickly and correctly.



### Learn more

- [Automate Data Migration](#)
- [QualA for OpenLab CDS](#)
- [Onboarding Tools](#)
- [CrossLab Services](#)



- **Reporting template services:** Get a boost on your reporting needs with packaged templates, personalized template-creation, and template training to meet your unique business needs.
- **Tutorials:** Get a sneak peek into OpenLab CDS and see how easy it is to do basic tasks. Browse the latest tutorials on topics like:
  - Mastering the new user interface
  - Setting or modifying privileges
  - Preparing and running your samples
  - Processing your data
- **Keeping up to date:** Agilent provides the services and tools you need to **stay current with software upgrades** and keep up to speed with **Software Maintenance Agreements**.

**Learn more**

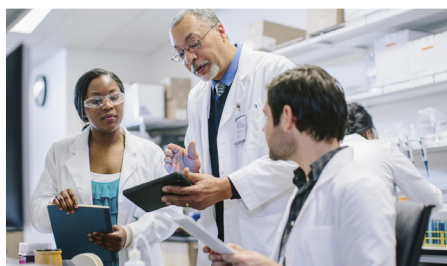
- [Reporting templates](#)
- [Software Maintenance Agreements](#)
- [Software upgrades](#)

**Watch videos**

- [OpenLab CDS tutorials](#)

# Everyone Benefits

OpenLab CDS brings substantial value to all stakeholders in your lab operations.



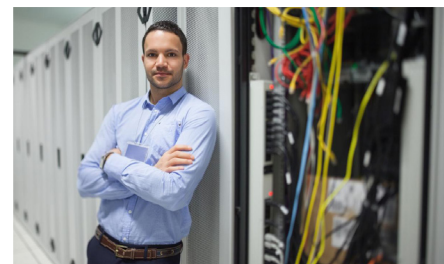
## For laboratory managers:

- Fewer errors and lower total costs for higher **operational efficiency**
- Single software platform for the entire lab—including single quadrupole LC/MS and GC/MS
- **Support for mass spectrometry**
- **Everyday data integrity** that meets international compliance regulations



## For instrument users/analysts:

- **Effective onboarding:** Resulting in higher employee satisfaction and productivity processes
- Tools and training to make it easier to learn the system:
  - **Online tutorials**
  - **OpenLab CDS user group webinars**
  - **OpenLab CDS virtual hands-on webinars**
- Affordable classroom training



## For IT managers:

- Centralized system administration and management for maximum uptime
- **Networking solutions, virtualization solutions, and cloud storage solutions** for flexible, cloud-based implementation options
- Industry-standard architecture accommodates laboratory growth



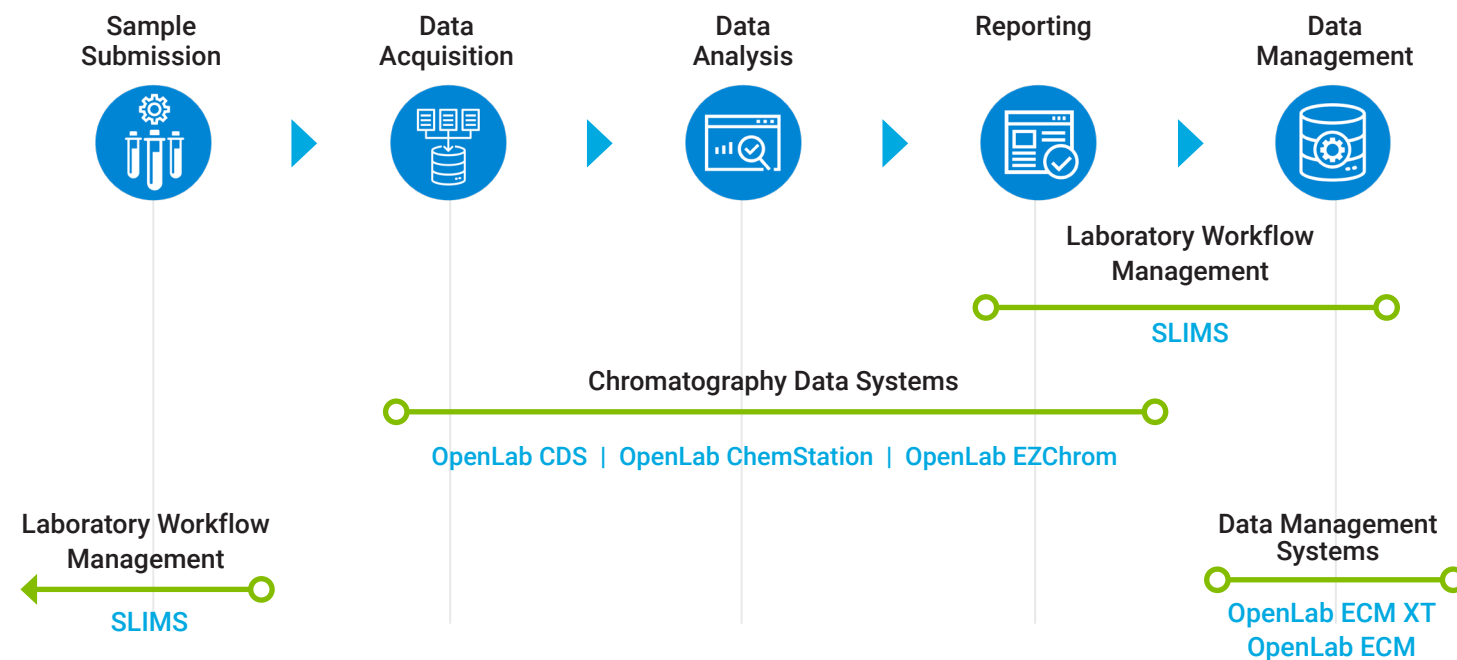
**Learn more about our OpenLab software products**

- [OpenLab CDS](#)
- [OpenLab ECM XT](#)
- [OpenLab ECM](#)

## Next Steps

# Explore OpenLab Software: A Single Informatics Solution for Today's Analytical Workflow

Agilent's OpenLab Software portfolio is an integrated suite of products that improves lab throughput and the quality of your results. These products easily integrate to work together to cover the analytical workflow from the moment the analytical request is generated until the data are archived.



## Products

**OpenLab CDS** – For QC labs who want fast reliable results and focus on data integrity.

**OpenLab ChemStation** – Flexibility and superior support for method development, capillary electrophoresis, and purification workflows.

**OpenLab EZChrom** – Provides continuity for current EZChrom customers and supports highly automated workflows.

**OpenLab ECM XT** – Reliable cloud-ready storage leverages current technologies and meets current security standards.

**OpenLab ECM** – Designed to operate across multiple sites and suitable for global deployment.

**SLIMS** – With SLIMS, your lab operations can be completely digitalized, allowing you to easily submit analytical requests, follow procedures and generate reports.

## Add-ons

**Sample Scheduler**  
**MatchCompare**  
**GPC/SEC**

## Next Steps

Take a closer look at out how OpenLab CDS improves operational efficiency:

[www.agilent.com/chem/openlab-cds-transform-your-lab](http://www.agilent.com/chem/openlab-cds-transform-your-lab)

Get additional product information:

[www.agilent.com/chem/openlabcds](http://www.agilent.com/chem/openlabcds)

Learn more about OpenLab software suite:

[www.agilent.com/chem/openlab](http://www.agilent.com/chem/openlab)

Find an Agilent customer center:

[www.agilent.com/chem/contactus](http://www.agilent.com/chem/contactus)

U.S. and Canada

1-800-227-9770

[agilent\\_inquiries@agilent.com](mailto:agilent_inquiries@agilent.com)

Europe

[info\\_agilent@agilent.com](mailto:info_agilent@agilent.com)

Asia Pacific

[inquiry\\_lsca@agilent](mailto:inquiry_lsca@agilent)

DE44404.8821990741

This information is subject to change without notice.

© Agilent Technologies, Inc. 2021

Published in the USA, September 9, 2021

5994-3949EN