

Company Profile

Since its establishment, SonoScape has been committed to providing high quality medical equipment for the healthcare sector. SonoScape specialized in the development and production of diagnostic solutions. Through innovation SonoScape continues to not only improve the efficiency and accuracy of healthcare solutions, but also to increase a sense of comfort for the patient and clinician. Since 2002, the innovative technology of SonoScape has benefited millions of people and we are dedicated to continue providing more effective and accessible healthcare solutions to the world.

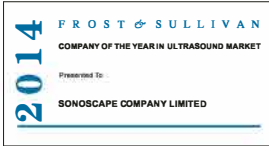
Quote from Frost & Sullivan



"The Frost & Sullivan Award for Growth Leadership is presented to the company that has demonstrated excellence in capturing the highest annual compound growth rate for the last 3 years... The sales of ultrasound devices contribute an overwhelming proportion of total revenue, helping the company strengthen its leading position to outperform the competitors in the marketplace. With increasing penetration of mid-to high-end ultrasound devices, SonoScape is expected to see growth potential in the future... "

Company Milestone

- 2002: Company Founded in Shenzhen, China
- 2003: Released SSI-1000: the 1st 15" Portable Color Doppler system in China
- 2004: Released SSI-2000: the 1st PC platform Color Doppler system in China
- 2005: Received the "High Technology Company" award from the PRC government
- 2007: Received "CHINA TOP BRAND" award in the Medical Equipment Industry
- 2007: Released the 1st Real time 4D ultrasound system in China
- 2008: Received "European Entrepreneurial Company 2008" award from FROST & SULLIVAN
- 2008: Received "Flagship Company" award in the Medical Equipment Industry in China
- 2009: Received "Product Quality Leadership Award 2009" from FROST & SULLIVAN
- 2011: Received the Reddot 2011 Product Design Award for S20 in Essen, Germany
- 2013: Received "Ultrasound Market Growth Leadership Award, 2013" from FROST & SULLIVAN
- 2014: Received the iF product design award 2014 for S9 in Munich, Germany
- 2014: Received "Company of the Year in Ultrasound Market, 2014" From FROST & SULLIVAN
- 2016: Received "Product Innovation In Electronic Endoscopy Market" from FROST&SULLIVAN



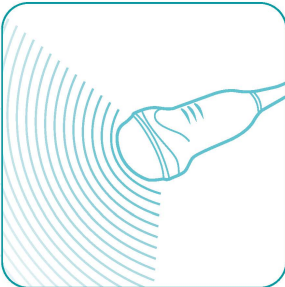
ISO 13485



Yizhe Building, Yuquan Road, Shenzhen, 518051, China
Tel: 86-755-26722890 Fax: 86-755-26722850
E-mail:sonoscape@sonoscape.net www.sonoscape.com



Authorized Distributor Leipziger Platz 8, 10117 Berlin
Tel: 49-30-555789950 Fax: 49-30-555789951
E-mail: info@xcelsitas.com www.xcelsitas.com



U+20161010



Application: Small part , breast , vascular
Center frequency: 7.5MHz
Field of View: 52mm



Application: Musculoskeletal, Small Parts, Nerve, Vascular
Center frequency: 7.5MHz
Field of View: 46mm



Application: Musculoskeletal, Small Parts, Nerve, Vascular
Center frequency: 8.0MHz
Field of View: 38mm



Application: Musculoskeletal, Small Parts, Nerve, Vascular
Center frequency: 7.5MHz
Field of View: 48mm



Application: Musculoskeletal, Small Parts, Nerve, Vascular
Center frequency: 8.0MHz
Field of View: 52mm



Application: Musculoskeletal, Small Parts, Nerve, Vascular
Center frequency: 8.5MHz
Field of View: 36mm



Application: Musculoskeletal, Small Parts, Nerve, Vascular
Center frequency: 7.5MHz
Field of View: 50mm



Application: Musculoskeletal, Small Parts, Nerve, Vascular
Center frequency: 7.5MHz
Field of View: 46mm

Phased Array Probes



Application: Cardiac
Center frequency: 2.7MHz
Field of View: 90°



Application: Pediatric Cardiac
Center frequency: 4.5MHz
Field of View: 90°



Application: Pediatric cardiac
Center frequency: 4.5MHz
Field of View: 90°



Application: Cardiac, Transcranial, Abdomen
Center frequency: 2.7MHz
Field of View: 90°



Application: Cardiac
Center frequency: 2.7MHz
Field of View: 90°



Application: Neonatal cardiac
Center frequency: 7.5MHz
Field of View: 90°



Application: Cardiac, Transcranial, Abdomen
Center frequency: 2.5MHz
Field of View: 90°



Application: Pediatric cardiac
Center frequency: 5.0MHz
Field of View: 90°



Application: Pediatric cardiac
Center frequency: 5.0MHz
Field of View: 90°

PW Pencil Type Probes



Application: Transcranial
Center frequency: 2.0MHz

CW Pencil Type Probes



Application: Cardiac
Center frequency: 2.0MHz

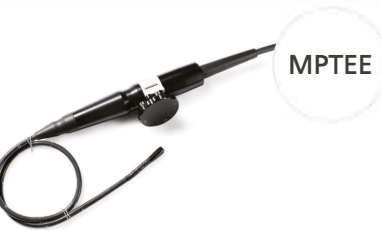


Application: Cardiac, Pediatrics
Center frequency: 5.0MHz

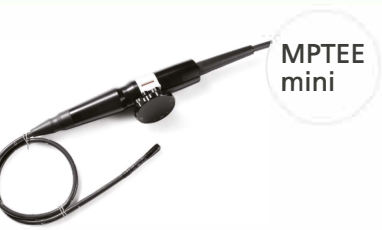


Application: Neonatal cardiac , Transcranial
Center frequency: 8.0MHz

TEE Probes



Application: Cardiac
Center frequency: 5.0MHz
Field of View: 90°



Application: Pediatric Cardiac
Center frequency: 5.0MHz
Field of View: 90°