

LOGIQ E10

Ultrasound, the next level



Empowering you to make the difference

Next-level leadership in ultrasound

The latest LOGIQ™ E10 system empowers ultrasound departments to meet today’s challenges with confidence. With advanced imaging, AI-powered workflows, and a flexible digital platform, it delivers efficient care across diverse clinical needs — while supporting research and driving operational excellence.

What’s new in LOGIQ E10

- Liver leadership package:** A comprehensive suite of non-invasive quantitative tools to support confident liver assessment, including the new Ultrasound-Guided Fat Fraction for evaluating percentage fat infiltration in liver steatosis and the well-established shear wave elastography for staging liver fibrosis.
- Auto Abdominal Suite 2.0:** Smarter, faster scanning with new AI-powered features for abdominal hemodynamic evaluation that enhance consistency and boost productivity based on intelligent anatomical recognition.
- Next-level specialty probes,** including XDclear™ and wireless Vscan Air™ probes: Designed to deliver exceptional image quality and diagnostic precision across a range of applications.
- Powerful digital open platform:** Enables seamless access to AI tools, third-party applications, and integrated reporting, empowering users to customize workflows and drive better outcomes.

LOGIQ E10 innovations are built on four pillars that drive everyday performance:

1. Confident diagnosis
2. Comprehensive tools
3. Concise workflow
4. Smart investment



Confident diagnosis

Ready to elevate outcomes?

Explore the latest LOGIQ E10 enhancements — engineered to elevate diagnostic clarity and empower confident clinical decisions.



NEW			
cSound™ Architecture with Advanced Speckle Reduction Imaging (SRI)	Choice of next-level specialty probes	Advanced flow modes	Breast Assistant and Thyroid Assistant, powered by Koios DS™
<p>Achieve exceptional spatial and contrast resolution — from the near field to depth — without the need to manually adjust. Every pixel stays in focus, enhancing tissue definition and reducing noise for confident interpretation. Adaptive Contrast Enhancement (ACE) is now expanded from liver imaging to additional applications.</p>	<p>E-Series and XDclear transducers deliver deep penetration with high resolution. Expanded portfolio includes new transducers for interventional, pediatric/neonatal cardiac imaging, and enhanced performance for existing probes. Integrated wireless Vscan Air CL dual-probe facilitates portable imaging.</p>	<p>Choose from a wide range of flow technologies — including Color Flow, Power Doppler Imaging, Microvascular Imaging (MVI) with Radiantflow™, B-Flow, and Micro B-Flow — to tailor visualization based on specific assessment needs, from macro to microvascular detail.</p>	<p>Gain an instant second opinion with onboard AI-based decision support tools. Trained on 1M+ cases, they provide a lesion quantitative risk assessment aligned to a BI-RADS® or TI-RADS™ category, helping reduce variability, avoid unnecessary biopsies, and support more consistent, confident reporting across care teams.</p>

Comprehensive tools

The LOGIQ E10 helps improve the precision of diagnosis, guidance and treatment across a wide range of patients.

Available tools include:

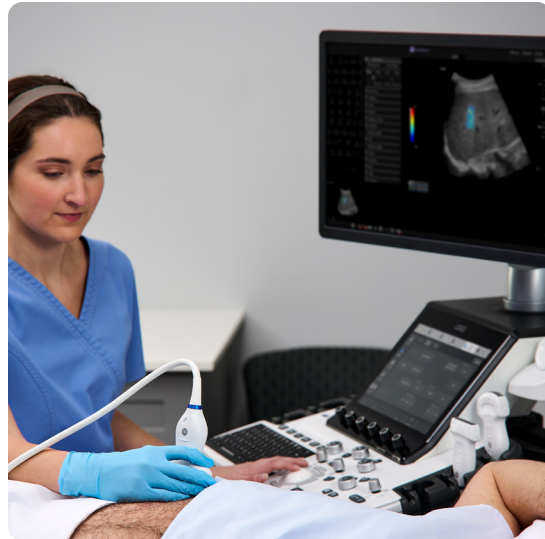
NEW

Ultrasound-Guided Fat Fraction (UGFF): Measures liver fat infiltration and provides an assessment metric as a percentage to grade liver steatosis and improve patient management — especially useful for patients with metabolic dysfunction-associated fatty liver disease (MAFLD).

2D shear wave elastography: Comprehensive and efficient workflows aid in the analysis of tissue elasticity to inform diagnosis, such as fibrotic liver staging and lesion evaluation.

Contrast Enhanced Ultrasound (CEUS): Visualizes and quantifies tissue perfusion and lesion vascularity clearly to optimize diagnostic accuracy.

LOGIQ app: Acquires photos of relevant anatomy using an Android™ smart device, adjusts system settings remotely, and seamlessly includes the images in the clinical report.



Abdominal



Breast



Cardiovascular



Interventional



Musculoskeletal



OB/GYN



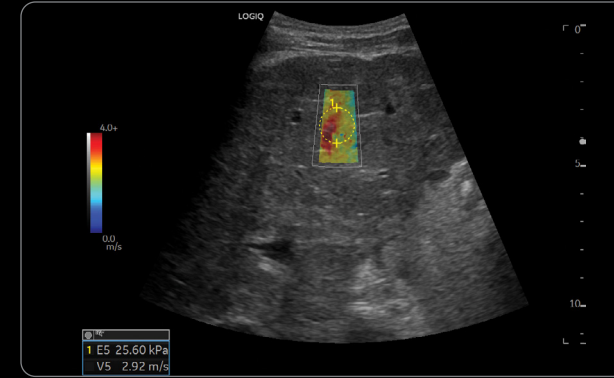
Pediatric



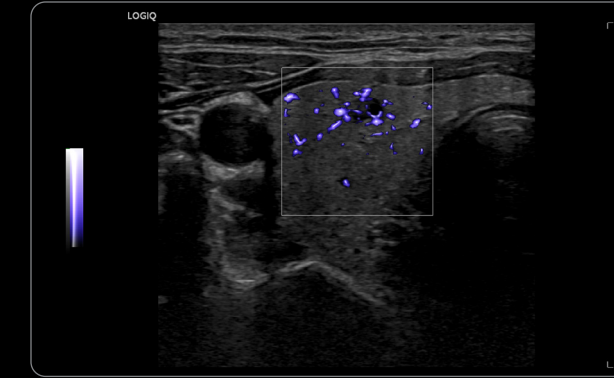
Small parts



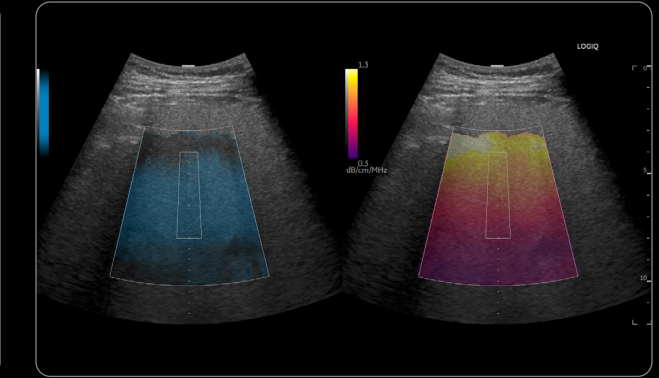
Vascular



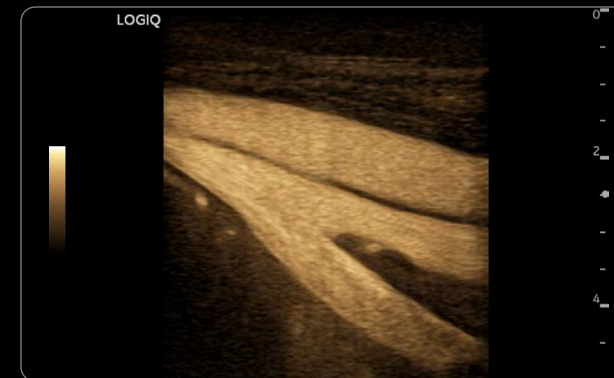
Liver 2D shear wave elastography, C1-6-D



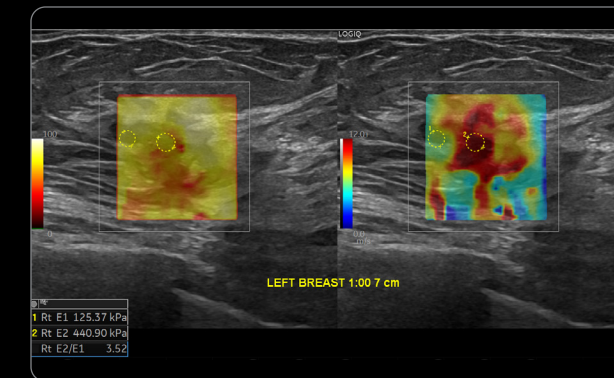
Thyroid nodule with MVI and Radiantflow, L4-20t-D



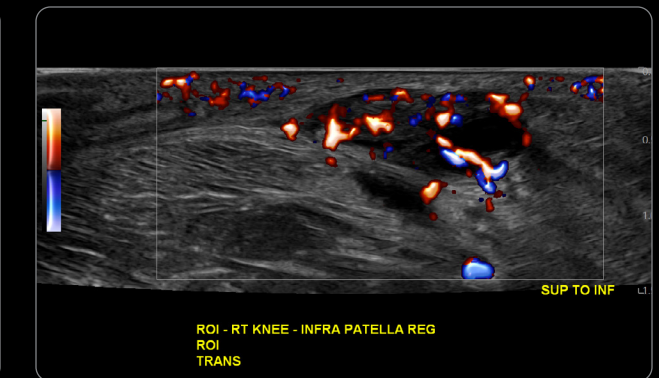
Liver UGFF with Color Quality map and Color Attenuation map in dual view, C1-6-D



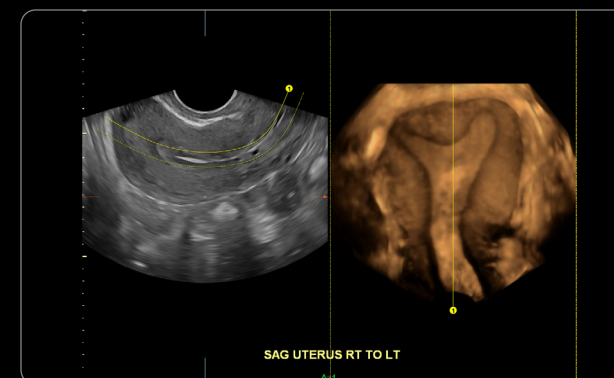
Micro B-Flow, L2-9-D



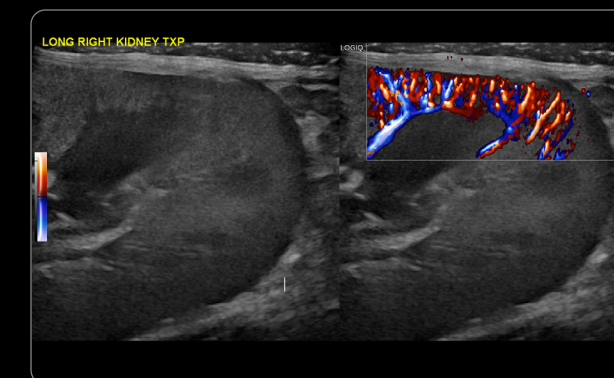
Breast lesion with 2D shear wave, ML4-20-D



Knee imaging with PDI, ML4-20-D



Endometrium VCI with Omniview, RIC5-9-D



Pediatric transplant kidney with Color Flow and Radiantflow, L6-24-D



Bowel imaging B-Mode with Advanced SRI, ML4-20-D

Concise workflow

AI-powered assistant tools

Our AI-powered workflow productivity tools help to detect and segment anatomies — boosting measurement accuracy, streamlining system interactions, and enhancing clinical efficiency.

Auto Abdominal Suite 2.0 with SmartEdit capabilities

NEW

- **Auto Aorta Measure Assistant:** Automatically provides A/P and transverse measurement of the abdominal aorta¹
- **Auto CBD Measure Assistant:** Automatically measures the AP dimension of the common bile duct¹
- **Auto Abdominal Color Assistant 2.0:** Detects the anatomy being scanned and automatically adjusts the color parameters, ROI size and position

Workflow benefits

Auto Abdominal Color Assistant 2.0

Up to 46% time savings

Reduces system interactions by 2/3

Auto Abdominal Suite 2.0 + SmartEdit

44% faster measurements² and editing

54% fewer system interactions²

Auto Abdominal Suite 2.0 + SmartEdit + Scan Assistant

65% faster measurements²

80% fewer system interactions

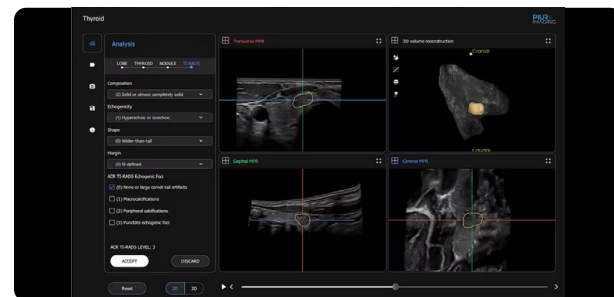
Claims based on GE HealthCare LOGIQ ultrasound AI and automation claims evaluation study. Conducted June 2025. DOC3073348.

- **Auto Renal Measure Assistant:** Automatically detects the kidney and measures the length, height and width in seconds¹
- **Auto Preset Assistant:** Automatically detects the anatomy being scanned and activates the correct preset

Additional AI-powered tools

NEW

- **PIUR tUS inside:** Upgrades standard 2D ultrasound into AI-powered 3D imaging with automated segmentation — streamlining acquisition, analysis and reporting into a reproducible, sweep-based workflow to support consistent volume measurements, nodule follow up, and longitudinal comparison
- **Auto Doppler Assistant:** Automatically detects blood flow direction, steers the color box and accurately places and angles pulsed Doppler sample volume, which enables users to complete exams in 20% less time with 50% fewer keystrokes³
- **Auto Lesion Segmentation:** Automatically traces lesion boundaries and generates two-dimensional measurements
- **OB Measure Assistant:** Detects fetal anatomy with an image and places measurement tools on anatomic boundaries, which reduces keystrokes and enhances reproducibility by automating key fetal measurements



PIUR tUS inside sweep-based workflow

Productivity enhancers

NEW



SmartEdit: New shortcut keys enable more intuitive modifications in select Auto Measurement tools, assisted by AI-based anatomy detection and segmentation with new shortcut key.



Hepatic Assistant: Combines 2D shear wave elastography and UGFF in a single workflow with the push of a button.



Compare Assistant: View a prior study — ultrasound, mammography, CT or MR — and current images together in real time via a split screen on the ultrasound monitor.



EZ Imaging: Offers customizable probe presets and updated touch panel that displays frequently used models for connected probes and other shortcuts to help reduce operator interaction and set-up time, enabling users to spend 32% less time with 38% fewer keystrokes.⁴



Raw data: Allows users to apply advanced image processing and quantification after the exam. Adjust contrast, display, measurements, and annotations — all while maintaining efficiency and enhancing diagnostic confidence.



Robust DICOM® connectivity: Saves images to a central location for review alongside other imaging modalities.



Verisound™ Collab: A tele-ultrasound solution that enables secure, real-time access to ultrasound exams — allowing remote colleagues to collaborate and support system education from any location.



Verisound Digital and AI Ultrasound Solutions

Portfolio of connectivity, collaboration, and AI-powered solutions that make ultrasound work more effectively for you, so you can work more effectively for your patients.

Smart investment

GE HealthCare accelerates innovation with the LOGIQ E10 — making it the smart choice for now and the future. The system offers robust enterprise-ready features to support standardization, security, and long-term value across your ultrasound fleet.

Open platform: Expanded LOGIQ AppAPI capabilities enable users to pioneer their own cutting-edge innovations for research purposes and to access a growing number of third-party applications.

Familiar user interface: The LOGIQ E10 offers greater functionality while maintaining the ease of operation and satisfying user experience that has become a hallmark of LOGIQ interface design.

SonoDefense: GE HealthCare's multi-layer approach to cybersecurity helps keep the systems safe and functional in the face of cyberthreats and helps protect patient data from unauthorized access. New integrated RFID (Radio-Frequency Identification) reader allows users to 'badge in and out' of the LOGIQ device with their secure IDs.

Lifecycle support: Wide range of enterprise tools to help users, administrators, and operations teams optimize performance, including Verisound Fleet, MyGEHealthCare, eDelivery, clinical applications training, and advanced system diagnostics.



Ultrasound systems for today, platform for tomorrow.

Products mentioned in the material may be subject to government regulations and may not be available in all countries. Shipment and effective sale can only occur after approval from the regulator. Please check with your local GE HealthCare representative for details.

© 2026 GE HealthCare. LOGIQ, Verisound, cSound, Radiantflow, Vscan Air, and XDclear are trademarks of GE HealthCare. GE is a trademark of General Electric Company used under trademark license. Koios DS is a trademark of Koios Medical. DICOM is the registered trademark of the National Electrical Manufacturers Association for its standards publications relating to digital communications of medical information. BI-RADS and TI-RADS are trademarks of the American College of Radiology. Android is a trademark of Google, LLC.

January 2026
JB33018XX

1. Available with SmartEdit, which enables easy segmenting of structures within an image.
2. Renal, aorta, and CBD measurements.
3. GE HealthCare internal study JB08078XX.
4. Compared with using a traditional user interface. Based on an internal GE HealthCare study. Data available upon request.