

# Luminaire Controller

LC2M2305R

**Citintelly**  
LIGHT FOR THE SMART CITY



## Description

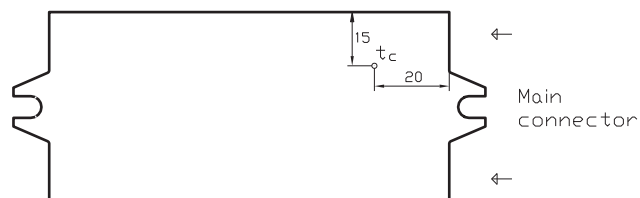
Citintelly Luminaire Controller implements Smart Street Lighting control functions using wireless 868 MHz radio communication with mesh-networking protocol. The Citintelly Luminaire Controller has 2 relay outputs and combined DALI/1..10 V control interfaces, as well as two digital inputs and external sensor supply 5 V.

The Citintelly Central Management Software (CMS) allows remote control and monitoring of Luminaire Controllers, storing historical data and analyzing it. The Citintelly Segment Controller is used as gateway between CMS and Luminaire Controllers.

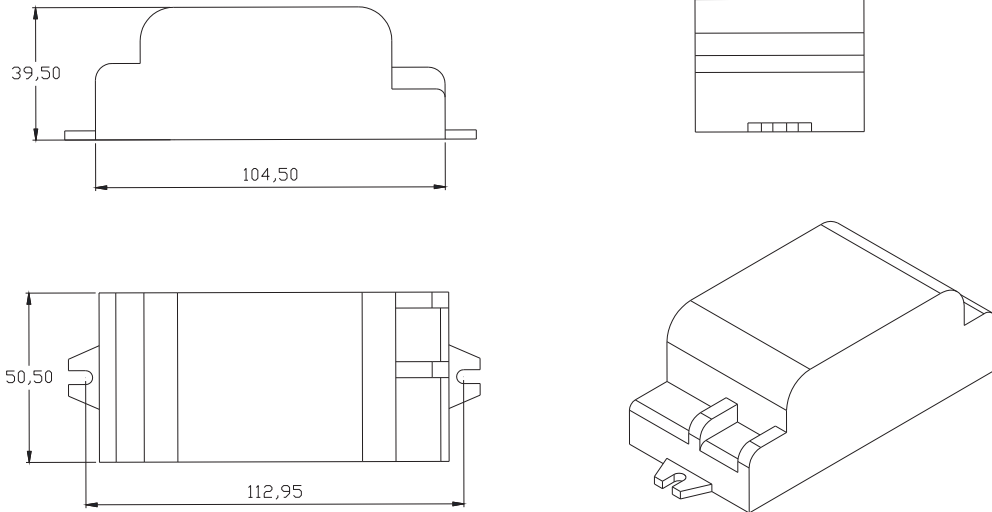
## Technical data

Luminaire controller has IP20 enclosure for protection against accidental contact with live parts.

Description field	Qty	Details
Power supply		AC 50-60 Hz
Supply voltage		220-240 V (Vmin 170 V; Vmax 265 V)
Temperature range		ta: -40 °C ... +75 °C
Maximal case temperature		tc: 95°C (see drawing below)
Relay output	2	1 kVA (NO or NC) each relay output
Type of load		LED luminaire, LED/HID luminaire ballast, decorative lighting, incandescent bulb
Electrical meter		Yes (U, I, f, cosF, P, Q, S)
LED driver control interface (software selected)		DALI (18 V supply) / 1-10 V
Digital inputs	2	5 V tolerant
Supply voltage for external sensors		5 V (50 mA)
RF network connection	1	868 MHz, IEEE 802.15.4 standard
Transceiver Class		2 (non-licensed band with external antenna socket)
Dimensions		LxWxH: 105x50x40 mm
Weight		160 g
Case material		PA66 flame-retardant (UL94 V0)
Conductor cross-section		MAIN: 0.25-2.5 mm <sup>2</sup> , strip length 10-11 mm EXT: 0.2-1.5 mm <sup>2</sup> , strip length 8-9 mm



## Drawings



## Certificate conformity

### Safety



According to EN 61347-2-11 and EN 61347-1 – Lamp control gear

### RF and EMC matters

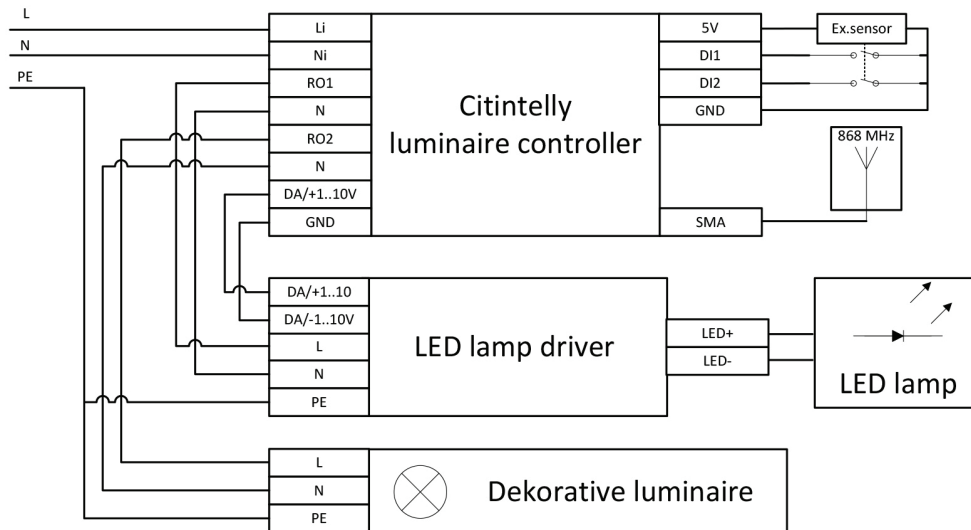
- ETSI EN 300-220-2 - Electromagnetic compatibility and Radio spectrum Matters (ERM);
- EN 301 489 - 1 (1.9.2) & 7 (1.3.1) - Electromagnetic compatibility and Radio spectrum Matters
- EN 55015:2013 - Limits and methods of measurement of radio disturbance characteristics of electrical lighting and similar equipment
- EN 61547:2009 - Equipment for general lighting purposes - EMC immunity requirements

### Chemical



Restriction of Hazardous Substances

## Connection diagram



## Features

- 868MHz based communication featuring self-healing/multi-hopping mesh-type networking protocol with AES128 bit encryption
- Combined DALI/1-10V control output
- External sensor supply 5 V and over DALI line (up to 10 mA)
- 2 relay outputs (NO/NC) and 2 digital inputs
- Energy meter on AC side (U, I, f, cosF, P, Q, S) and data from LED driver (ILED, ULED, P, temperature, minutes of operation)
- Firmware update over the air via CMS application

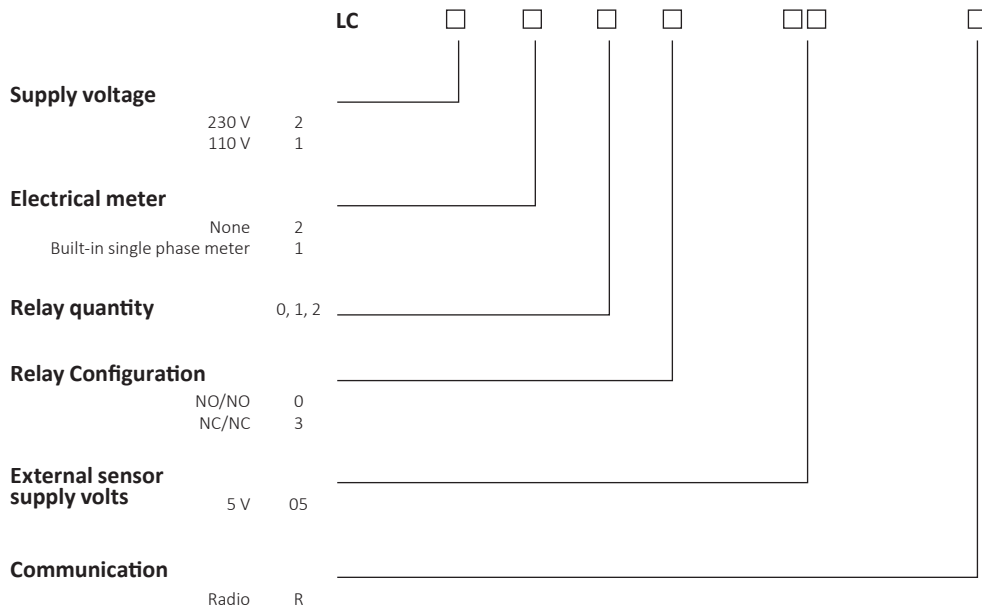
## Smart city features

Citintelly products provide full functionality for the smart city. Outdoor lighting is important resource that needs to be managed efficiently. Light should be provided as much as necessary for safety and as little as possible for energy saving. Public lighting has to be in the right place and only there for the citizen wellbeing to avoid light pollution. Citintelly luminaire controllers are equipped with two digital inputs to connect various sensors to enable full lighting control for the city.

The Central Management Software allows to implement electrical energy demand-side management depending the price of electrical energy or budget restrictions.

**Ordering codes**

LC 2 M 2 3 05 R



**For any questions contact:**

office@citintelly.com  
+371 26371717

Citintelly®

Specifications are subject to change without notice.  
Trademarks are the property of Citintelly.