



TONBRIDGE
MEDICAL



GLYCINE™

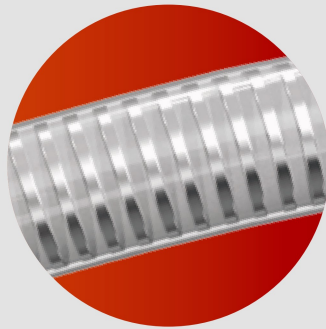
Micro Catheter

Designed to provide
smooth navigation

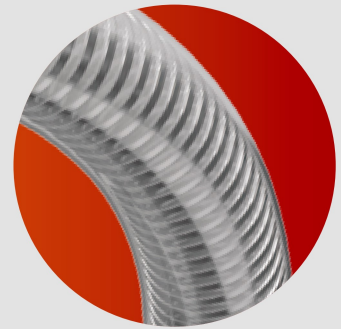
PRODUCT FEATURES



Continuous coil construction enhances kink resistance and provides the smooth navigation through tortuous anatomies.



Distal soft tip improves the flexibility and trackability.



Outer surface hydrophilic coating reduces resistance and enables a easy delivery.

Ensure accurate deployment of Thrombite clot retriever device.

Ordering Information

Model	Specification	Proximal OD (Fr/mm)	Distal OD (Fr/mm)	ID (in/mm)	Useable length (cm)
21	LMC-21-110	2.7/0.91	2.4/0.81	0.021/0.53	110
	LMC-21-130	2.7/0.91	2.4/0.81	0.021/0.53	130
	LMC-21-153	2.7/0.91	2.4/0.81	0.021/0.53	153
27	LMC-27-110	2.8/0.94	2.8/0.94	0.027/0.69	110
	LMC-27-130	2.8/0.94	2.8/0.94	0.027/0.69	130
	LMC-27-145	2.8/0.94	2.8/0.94	0.027/0.69	145

Indications:

The Glycine™ micro catheter is suitable for professional physician to selectively inject or input control medium and/or liquid and/or embolic materials, and/or appropriate devices(such as clot retriever device, coils) to the periphery and neuro vasculature.

Zhuhai Ton-Bridge Medical Tech. Co.,Ltd

Unit 1-B, Building 4, CEC High Tech Industrial Park, Zhuhai City, China

Tel: +86-756-3313003

Fax: +86-756-3313003

<https://www.ton-bridge.com/>

©2020 Ton-Bridge Medical Tech. Co., Ltd. All rights reserved.