

dispoFINE

injection needle, sterile

features

- needle tube is made of smooth and durable stainless steel
- sheath and hub made of polypropylene
- thin walls assure adequate stream pace
- tip sharpened in three surfaces (back cut)
- bevel type: LB/BL standard long bevel
- surface of needle tube covered with sliding agent (silicone)
- glued needle elements to prevent their separation (glue - epoxy resin)
- hubs coloured in accordance with ISO code allowing fast recognition of needle size
- latex-free, phthalate-free
- non-toxic, non-pyrogenic
- EO sterilized
- packaging: 1 pc./paper-foil

indication

- device designed for intravenous, intramuscular and hypodermic injections

REF	size	colour	G	intermediate packaging
IN-03X13	0,3 mm x 13 mm	yellow	30	100 pcs
IN-04X19	0,4 mm x 19 mm	medium grey	27	100 pcs
IN-045X12	0,45 mm x 12 mm	brown	26	100 pcs
IN-045X16	0,45 mm x 16 mm	brown	26	100 pcs
IN-045X22	0,45 mm x 22 mm	brown	26	100 pcs
IN-05X16	0,5 mm x 16 mm	orange	25	100 pcs
*IN-05X20	0,5 mm x 20 mm	orange	25	100 pcs
IN-05X25	0,5 mm x 25 mm	orange	25	100 pcs
IN-05X40	0,5 mm x 40 mm	orange	25	100 pcs
IN-06X25	0,6 mm x 25 mm	deep blue	23	100 pcs
IN-06X30	0,6 mm x 30 mm	deep blue	23	100 pcs
IN-06X40	0,6 mm x 40 mm	deep blue	23	100 pcs
IN-07X30	0,7 mm x 30 mm	black	22	100 pcs
IN-07X40	0,7 mm x 40 mm	black	22	100 pcs
*IN-07X50	0,7 mm x 50 mm	black	22	100 pcs

* available on request



REF	size	colour	G	intermediate packaging
IN-08X25	0,8 mm x 25 mm	deep green	21	100 pcs
IN-08X40	0,8 mm x 40 mm	deep green	21	100 pcs
*IN-08X50	0,8 mm x 50 mm	deep green	21	100 pcs
IN-09X25	0,9 mm x 25 mm	yellow	20	100 pcs
IN-09X40	0,9 mm x 40 mm	yellow	20	100 pcs
IN-11X40	1,1 mm x 40 mm	cream	19	100 pcs
IN-12X40	1,2 mm x 40 mm	pink	18	100 pcs
IN-12X50	1,2 mm x 50 mm	pink	18	100 pcs
IN-16X40	1,6 mm x 40 mm	white	16	100 pcs
IN-18X40	1,8 mm x 40 mm	blue-grey	15	100 pcs
IN-21X40	2,1 mm x 40 mm	pale green	14	100 pcs

 bulk packaging:
50 x 100 pcs

 **BESTSELLER**

dispoGUARD

safety injection needle, sterile

features

- safety cover can be activated with one hand and it shields needle immediately after injection
- cover integrated with needle
- tip sharpened in three surfaces (back cut)
- colour coding system for size, marked on hub
- activation of safety mechanism signalized by audible click
- needle is securely closed inside activated safety cover
- latex-free, phthalate-free
- non-toxic, non-pyrogenic
- EO sterilized
- packaging: 1 pc./paper-foil

indication

- device designed for intravenous, intramuscular and hypodermic injections

REF	size	colour	G	intermediate packaging
INB-03X13	0,3 mm x 13 mm	light yellow	30	50 pcs
INB-045X12	0,45 mm x 12 mm	brown	26	50 pcs
INB-05X25	0,5 mm x 25 mm	orange	25	50 pcs
INB-05X40	0,5 mm x 40 mm	orange	25	50 pcs
INB-06X25	0,6 mm x 25 mm	blue	23	50 pcs
INB-06X30	0,6 mm x 30 mm	blue	23	50 pcs
INB-07X30	0,7 mm x 30 mm	black	22	50 pcs
INB-07X40	0,7 mm x 40 mm	black	22	50 pcs
INB-08X40	0,8 mm x 40 mm	green	21	50 pcs
INB-09X40	0,9 mm x 40 mm	yellow	20	50 pcs
INB-11X40	1,1 mm x 40 mm	beige	19	50 pcs
INB-12X40	1,2 mm x 40 mm	pink	18	50 pcs

 bulk packaging:
50 x 50 pcs



feeding tube

sterile

features

- made of PVC that is resistant to bending and kinking
- transparency of tube allows visual inspection
- atraumatic, soft rounded, closed tip facilitates insertion of catheter
- tube equipped with two alternate end holes with gently stretched edges
- connector compatible with the conical end of luer syringe
- integrated stopper allows the tube to be closed tightly
- colour-coded connectors for size recognition, numerical size identification on packaging
- 3 depth markers placed on tube allow verification of the correct placement of tube after insertion
- individually packed straight
- single-use
- latex-free
- EO sterilized
- packaging: 1 pc./paper-foil

indication

- inserted through patient's nose or mouth to perform enteral nutrition

REF	size	length	colour	intermediate packaging
CK-04-40	CH 4	400 mm	red	100 pcs
CK-05-40	CH 5	400 mm	grey	100 pcs
CK-06-40	CH 6	400 mm	light green	100 pcs
CK-08-40	CH 8	400 mm	blue	100 pcs
CK-10-40	CH 10	400 mm	black	100 pcs



bulk packaging:
10 x 100 pcs

suction catheter

sterile

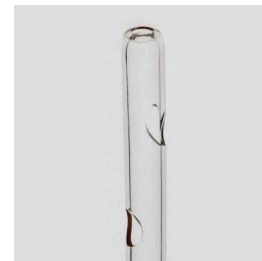
features

- made of soft and flexible PVC, that is resistant to bending and kinking
- frozen surface prevents the catheter from sticking to the wall of the endotracheal tube
- atraumatic, soft rounded, open tip
- tip with two alternating lateral eyes with smooth edges
- colour-coded connectors for size recognition, numerical size identification on the packaging
- single-use
- EO sterilized
- packaging: 1 pc./paper-foil

indication

- device designed for suction of secretions from the upper respiratory tract
- recommended for source of suction with its own suction force regulation

REF	size	length	colour	intermediate packaging
CO-B06-40	CH 6	400 mm	light green	50 pcs
CO-B08-40	CH 8	400 mm	blue	50 pcs
CO-B10-40	CH 10	400 mm	black	50 pcs
CO-B12-50	CH 12	500 mm	white	50 pcs
CO-B12-60	CH 12	600 mm	white	50 pcs
CO-B14-50	CH 14	500 mm	green	50 pcs
CO-B14-60	CH 14	600 mm	green	50 pcs
CO-B16-50	CH 16	500 mm	orange	50 pcs
CO-B16-60	CH 16	600 mm	orange	50 pcs
CO-B18-50	CH 18	500 mm	red	50 pcs
CO-B18-60	CH 18	600 mm	red	50 pcs
CO-B20-50	CH 20	500 mm	yellow	50 pcs
CO-B20-60	CH 20	600 mm	yellow	50 pcs
CO-B22-50	CH 22	500 mm	purple	50 pcs
CO-B22-60	CH 22	600 mm	purple	50 pcs



bulk packaging:
10 x 50 pcs

easyFLOW IS

infusion set, sterile

34

features

- 2-way sharp closure-piercing device of the drip chamber with anti-slip surface that guarantees tight and reliable connection with fluid containers/bags
- air inlet with anti-bacterial filter and coloured (blue) flap
- pliable drip chamber, size 6 cm, equipped with additional pressure wings to facilitate insertion into containers with liquids
- dropper: 20 drops = 1 ml +/- 0,1 ml
- fluid filter protecting against larger particles with pore size 15 µm
- min. 150 cm-long, soft, flexible tubing with luer lock conical fitting
- precise safe flow regulator with integrated holder for the closure-piercing device and with hook for securing the tubing
- name of the manufacturer placed on the flow regulator
- both tips of the device additionally secured with protective caps
- device available in a version containing phthalates and without phthalates
- single-use
- non-pyrogenic, non-toxic
- latex-free
- EO sterilized
- packaging: 1 pc./paper-foil with a coloured code (blue) identifying the device

indication

- device for fluid transfer in infusion therapy

REF	version
IS	with phthalates
IS-BF	without phthalates


bulk packaging:
250 pcs
 
BESTSELLER



extension tube for infusion pump

sterile

features

- tubing made of PVC
- device available in a transparent and amber version for photosensitive medicines
- diameter of the tubing - outer: 2,4 mm; inner: 1,24 mm
- luer lock fitting - male and female
- single-use
- latex-free, phthalate-free
- non-pyrogenic, non-toxic
- EO sterilized
- packaging: 1 pc./paper-foil

indication

- device used to extend infusion line

REF	colour of tube	length	intermediate packaging
P450-BF	transparent	45 cm	50 pcs
P1500-BF	transparent	150 cm	50 pcs
PB1500-BF	amber	150 cm	50 pcs


bulk packaging:
24 x 50 pcs



easyFLOW TS

transfusion set, sterile

features

- 2-way sharp closure-piercing device of the drip chamber with anti-slip surface that guarantees tight and reliable connection with containers/bags
- air inlet with anti-bacterial filter and a coloured (red) flap
- pliable drip chamber
- dropper: 20 drops = 1 ml +/- 0,1 ml
- special blood filter with large area, pore size 200 µm
- min. 150 cm-long, soft, flexible tubing
- universal luer lock fitting at the end of tubing
- precise safe flow regulator with integrated holder for the closure-piercing device and with hook for securing the tubing
- name of the manufacturer placed on the flow regulator
- both tips of the device additionally secured with protective caps
- device available in a version containing phthalates and without phthalates
- single-use
- non-pyrogenic, non-toxic
- latex-free
- EO sterilized
- packaging: 1 pc./paper-foil with a coloured code (red) identifying the device

indication

- device used for the administration of blood and blood products

REF	version
TS	with phthalates
TS-BF	without phthalates



bulk packaging:
250 pcs



35

3-way stopcock

sterile

features

- made of polycarbonate
- transparent housing
- clear optical identifier of open/close position (marked flow directions) operating in 360 degrees
- consistent, straight flow channels and an optimal internal diameter ensure correct pressure measurement
- rotating male luer lock
- all inlets protected with caps
- resistant to lipids
- latex-free, phthalate-free
- single-use
- non-pyrogenic, non-toxic
- EO sterilized
- packaging: 1 pc./paper-foil

indication

- device designed for managing the flow of infusion fluids during administration
- enables switching the infusion flow path
- for blood pressure monitoring
- for direct medicine/fluid supply

REF	colour	intermediate packaging
KT-002	blue	50 pcs



bulk packaging:
20 x 50 pcs



cannula stopper

sterile

features

- precisely and safely closes standard ports
- luer lock stopper has only one male tip
- combi stopper with male and female tip especially dedicated for securing luer lock fitting in infusion and transfusion sets
- single-use
- non-pyrogenic
- latex-free, phthalate-free
- EO sterilized
- packaging: 1 pc./paper-foil

indication

- as a stopper of intravenous cannulas, ports and catheters
- intended to be used in combination with other devices during infusion therapy, protecting against the outflow of blood through the cannula and protecting against contamination and infection

REF	type	intermediate packaging	bulk packaging
KDKLL	luer lock	250 pcs	10 x 250 pcs
KDKC	combi	100 pcs	50 x 100 pcs



nasal cannula

sterile

features

- made of medical PVC
- very soft tips with smooth edges
- fastening under the chin with a soft, sliding adjustment ring
- various spacing of the nasal part of the cannula depending on the size
- universal connector compatible with any source of oxygen
- tubing with star cross-section that is resistant to bending
- available in 3 sizes: for adults, for children and for infants with 140 cm, 200 cm, 300 cm and 500 cm long tubing
- single-use
- latex-free
- EO sterilized
- packaging: 1 pc./foil

indication

- designed to deliver oxygen through the nose



50

REF	length of tubing	purpose	intermediate packaging	bulk packaging
CTNN-200	200 cm	for infants	25 pcs	10 x 25 pcs
CTNZ-200	200 cm	for children	25 pcs	10 x 25 pcs
CTND-140	140 cm	for adults	30 pcs	10 x 30 pcs
CTND-200	200 cm	for adults	25 pcs	10 x 25 pcs
CTND-300	300 cm	for adults	15 pcs	10 x 15 pcs
CTND-500	500 cm	for adults	10 pcs	10 x 10 pcs

oxygen tubing

sterile

features

- made of transparent, non-toxic PVC
- tubing with star cross-section that is resistant to bending, with reinforcing straps along the entire length
- standardized connectors at the end of the tubing allowing connection to oxygen devices
- single-use
- latex-free
- EO sterilized
- packaging: 1 pc./paper-foil

indication

- for transporting oxygen from an oxygen source to another medical device for oxygen supply, e.g. oxygen mask



REF	length of tubing	bulk packaging
DT2100	210 cm +/- 2%	100 x 1 pc.
DT4260	426 cm +/- 2%	50 x 1 pc.
DT7620	762 cm +/- 2%	25 x 1 pc.

intubation stylet


sterile

features

- made of PVC-coated aluminium
- special material for both stiffness and pliability
- intended for use during difficult intubation
- size and diameter markings
- single-use
- latex-free
- EO sterilized
- packaging: 1 pc./paper-foil

indication

- allows you to give the endotracheal tube the right curvature
- introduced to the endotracheal tube facilitates intubation in routine and difficult cases, when the laryngeal inlet is not visible

REF	size	diameter	length	endotracheal tube I.D.	intermediate packaging	 bulk packaging
PRI-06	6 Fr	2,0 mm	310 mm (±10)	from 2.0 to 4.0	50 pcs	10 x 50 pcs
PRI-10	10 Fr	3,3 mm	390 mm (±10)	from 4.5 to 6.5	50 pcs	10 x 50 pcs
PRI-14	14 Fr	4,7 mm	390 mm (±10)	from 7.0 to 10.0	40 pcs	10 x 40 pcs



endotracheal tube

uncuffed, sterile

features

- made of flexible PVC
- radiopaque line over the entire tube length
- equipped with lateral Murphy eye
- graduated every 1 cm
- double depth marker to control the position of the tube
- tube size marked in 3 places (on the connector and in two places on the tube body)
- detachable connector with an outer diameter of 15 mm
- single-use
- latex-free
- EO sterilized
- packaging: 1 pc./paper-foil

indication

- for both oral and nasal intubation
- inserted into the trachea to prevent airway obstruction and respiratory failure

REF	size	intermediate packaging
RIB-20	I.D. (mm) 2.0	20 pcs
RIB-25	I.D. (mm) 2.5	20 pcs
RIB-30	I.D. (mm) 3.0	20 pcs
RIB-35	I.D. (mm) 3.5	20 pcs
RIB-40	I.D. (mm) 4.0	20 pcs
RIB-45	I.D. (mm) 4.5	20 pcs
RIB-50	I.D. (mm) 5.0	20 pcs
RIB-55	I.D. (mm) 5.5	20 pcs
RIB-60	I.D. (mm) 6.0	20 pcs
RIB-65	I.D. (mm) 6.5	20 pcs
RIB-70	I.D. (mm) 7.0	20 pcs
RIB-75	I.D. (mm) 7.5	20 pcs
RIB-80	I.D. (mm) 8.0	20 pcs
RIB-85	I.D. (mm) 8.5	20 pcs
RIB-90	I.D. (mm) 9.0	20 pcs
RIB-95	I.D. (mm) 9.5	20 pcs
RIB-100	I.D. (mm) 10.0	20 pcs



bulk packaging:
10 x 20 pcs



endotracheal tube

cuffed, sterile

features

- made of flexible PVC
- equipped with lateral Murphy eye and radiopaque line over the entire tube length
- graduated every 1 cm, double depth marker to control the position of the tube
- low-pressure, high-volume cuff
- tube size marked in 4 places (on the connector, on the pilot balloon and in two places on the tube body)
- detachable connector with an outer diameter of 15 mm
- pilot balloon with LOT and size indication
- single-use
- latex-free
- EO sterilized
- packaging: 1 pc./paper-foil

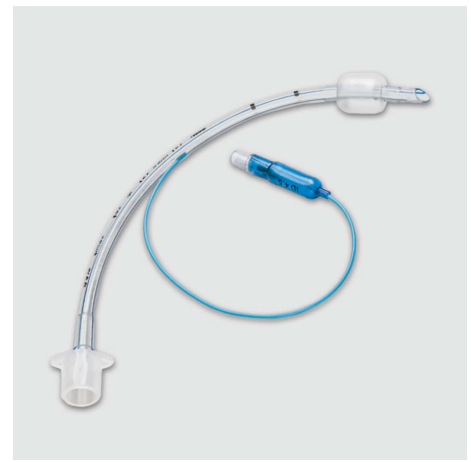
indication

- for both oral and nasal intubation
- inserted into the trachea to prevent airway obstruction and respiratory failure

REF	size	intermediate packaging
RIM-30	I.D. (mm) 3.0	20 pcs
RIM-35	I.D. (mm) 3.5	20 pcs
RIM-40	I.D. (mm) 4.0	20 pcs
RIM-45	I.D. (mm) 4.5	20 pcs
RIM-50	I.D. (mm) 5.0	20 pcs
RIM-55	I.D. (mm) 5.5	20 pcs
RIM-60	I.D. (mm) 6.0	20 pcs
RIM-65	I.D. (mm) 6.5	20 pcs
RIM-70	I.D. (mm) 7.0	20 pcs
RIM-75	I.D. (mm) 7.5	20 pcs
RIM-80	I.D. (mm) 8.0	20 pcs
RIM-85	I.D. (mm) 8.5	20 pcs
RIM-90	I.D. (mm) 9.0	20 pcs
RIM-95	I.D. (mm) 9.5	20 pcs
RIM-100	I.D. (mm) 10.0	20 pcs



bulk packaging:
10 x 20 pcs



reinforced endotracheal tube

cuffed, sterile

features

- made of flexible PVC
- reinforcing within the wall of the entire tube
- equipped with lateral Murphy eye and radiopaque line over the entire tube length
- graduated every 1 cm, double depth marker to control the position of the tube
- tube size marked in 4 places (on the connector, on the pilot balloon and in two places on the tube body)
- detachable connector with an outer diameter of 15 mm
- single-use
- latex-free
- EO sterilized
- packaging: 1 pc./paper-foil

indication

- for both oral and nasal intubation
- inserted into the trachea to prevent airway obstruction and respiratory failure
- for intubation of the patient in an unusual position, with a high risk of kinking the endotracheal tube

REF	size	intermediate packaging
RIMZP-30	I.D. (mm) 3.0	10 pcs
RIMZP-35	I.D. (mm) 3.5	10 pcs
RIMZP-40	I.D. (mm) 4.0	10 pcs
RIMZP-45	I.D. (mm) 4.5	10 pcs
RIMZP-50	I.D. (mm) 5.0	10 pcs
RIMZP-55	I.D. (mm) 5.5	10 pcs
RIMZP-60	I.D. (mm) 6.0	10 pcs
RIMZP-65	I.D. (mm) 6.5	10 pcs
RIMZP-70	I.D. (mm) 7.0	10 pcs
RIMZP-75	I.D. (mm) 7.5	10 pcs
RIMZP-80	I.D. (mm) 8.0	10 pcs
RIMZP-85	I.D. (mm) 8.5	10 pcs
RIMZP-90	I.D. (mm) 9.0	10 pcs
RIMZP-95	I.D. (mm) 9.5	10 pcs
RIMZP-100	I.D. (mm) 10.0	10 pcs



bulk packaging:
10 x 10 pcs





SELF-ADHESIVE NON-WOVEN DRESSINGS

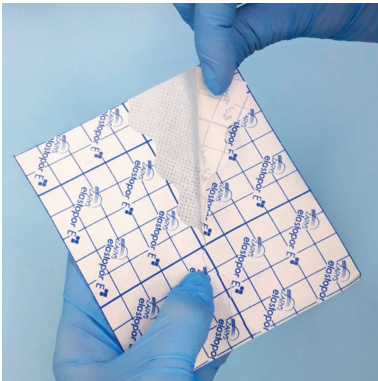
DRESSING TAPE

features

- made of hydrophobic non-woven
- covered with hypoallergenic acrylic glue
- micropores in the structure of the non-woven provide adequate vapor permeability, thanks to which a proper gas exchange between the dressing and the skin takes place
- flexible, conforms to the body's contours, guarantees freedom of movement
- backing layer made of silicone paper
- backing paper with metric scale facilitates the division of the tape and precise, painless and efficient application
- packed in a cardboard box - a dispenser that allows dosing without removing the tape from the packaging

indication

- stabilization, protection and fixation of primary, non-adhesive dressings, applied directly to wounds and skin damages
- stabilization, protection and fixation of drains, catheters, medical tubes



adhesive non-woven dressing tape

elastopor



non-sterile

REF	dimensions	packaging unit box	bulk packaging carton
806009	2,5 cm x 10 m	1 pc.	200 pcs
806010	5 cm x 10 m	1 pc.	200 pcs
806011	10 cm x 10 m	1 pc.	50 pcs
806012	15 cm x 10 m	1 pc.	50 pcs
806013	20 cm x 10 m	1 pc.	25 pcs
806014	25 cm x 10 m	1 pc.	25 pcs
806015	30 cm x 10 m	1 pc.	25 pcs



straight intersection of backing paper

elastopor E



non-sterile

REF	dimensions	packaging unit box	bulk packaging carton
806009E	2,5 cm x 10 m	1 pc.	200 pcs
806010E	5 cm x 10 m	1 pc.	200 pcs
806011E	10 cm x 10 m	1 pc.	50 pcs
806012E	15 cm x 10 m	1 pc.	50 pcs
806013E	20 cm x 10 m	1 pc.	25 pcs
806014E	25 cm x 10 m	1 pc.	25 pcs
806015E	30 cm x 10 m	1 pc.	25 pcs



wavy intersection of backing paper

made of hydrophobic non-woven

air permeable structure

possibility of cutting

white colour

SELF-ADHESIVE DRESSINGS WITH ABSORBENT PAD

features

- self-adhesive dressings with centrally situated absorbent pad, made of hydrophobic non-woven, covered with acrylic glue
- absorbent pad coated with a polyethylene mesh that prevents sticking to the wound, absorbs a small and medium amount of exudate and protects against the influence of external factors
- rounded edges prevent accidental removal of the dressing
- silicone backing paper facilitates the precise, painless and efficient application
- micropores in the structure of the non-woven provide adequate vapor permeability, thanks to which a proper gas exchange between the dressing and the skin takes place
- hypoallergenic

88



non-woven dressing with absorbent pad

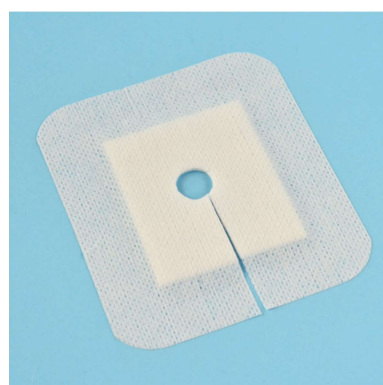
elastopor STERIL



indication

- especially recommended for covering surgical wounds
- for treating wounds with a small and medium amount of exudate

REF	dimensions	packaging unit paper-paper	bulk packaging box
801001	5 cm x 7,2 cm	1 pc.	100 x 1 pc.
801012	6 cm x 10 cm	1 pc.	50 x 1 pc.
801002	8 cm x 10 cm	1 pc.	30 x 1 pc.
801013	10 cm x 10 cm	1 pc.	30 x 1 pc.
801021	10 cm x 12 cm	1 pc.	30 x 1 pc.
801014	10 cm x 15 cm	1 pc.	30 x 1 pc.
801003	6 cm x 15 cm	1 pc.	50 x 1 pc.
801004	8 cm x 15 cm	1 pc.	30 x 1 pc.
801005	8 cm x 20 cm	1 pc.	30 x 1 pc.
801015	10 cm x 20 cm	1 pc.	25 x 1 pc.
801016	10 cm x 25 cm	1 pc.	25 x 1 pc.
801017	10 cm x 30 cm	1 pc.	25 x 1 pc.
801018	10 cm x 35 cm	1 pc.	25 x 1 pc.



non-woven dressing with absorbent pad, incision and O-hole

elastopor STERIL D



indication

- dressing application around the inserted drain
- securing the outlet of drains and catheters
- for treating wounds with a small and medium amount of exudate

REF	dimensions	packaging unit paper-paper	bulk packaging box
801031	9 cm x 10 cm	1 pc.	30 x 1 pc.
801030	12 cm x 14 cm	1 pc.	25 x 1 pc.