

VG Medical

VG Medical is a leading manufacturer of OR and ICU with various product lines of surgical light, operating table, medical supply unit and digital OR system, providing safe, effective and cost-saving solutions for modern hospitals.



VG-BCHU-0025.A



GENERAL CATALOG OPERATING TABLE ACCESSORIES



VG Medical Technology Co.,Ltd.

Tel: +86-510-88816999

Fax: +86-510-88806999

Add: No. 35-201, Changjiang South Road, Xinwu District, Wuxi, Jiangsu - China.

Email: sales@vg-med.com

Web: www.vg-med.com



* Promotional material. Specifications maybe changed without notification. Please contact us for updated information



VG Medical was established in 1994, after more than 20 years of development, has grown into a global supplier of surgical solutions for the whole. Products covered operating table, surgical lamp, medical pendant and digital integrated operating room.

VG Medical not only has a complete surgical operating table product line, but also focus on the clinical practice, and integrated with various types of surgery study. Company developed operating table accessories to meet the needs of various types of surgery. After years of continuous development and improvement, the company took the lead in launch a full range of operating table accessories and positioning pad production line.

VG medical pursue higher quality standards, company adopted the German T U V I S O 1 3 4 8 5 quality system assessment. Products pass the ROHS directive and biocompatibility testing and rigorous testing by third parties to verify the EU and the United States to meet the requirements. Adopted the CE, SFDA product certification. Company products sol in more than 60 countries and regions

VG Medical focus on customer satisfaction. Company has a professional regular sales team and after-sales service team. The company has a sound service management system and sales service network; customers can be provided , training, sales and service. Products listed in the catalog can be adjusted on customer requirement.

Create by heart. VG medical. We are committed to provide safe quality products and satisfactory service.



CONTENTS



Anesthesia Frame & Binding Strap & IV Rod	-----01 02
Hand Support & Leg Support	-----03 04
Skull Clamp & Head support & Leg plate	-----05 06
Body Support & Shoulder Support & Accessories Cart	-----07 08
Clamps	----- 09
Waste Basin & Sponge Position Pad	----- 10
Accessories for Standard Configuration & Orthopedic tractor	-----11 12



#1406.2000

Arm Rest (Low Position)

- Use to support and fix patient' s arm
- It' s composed of arm rest, arm rest adopter, adjustable clamp and pad
- The angel can be adjusted by itself
- It can be adjusted the width and height vertically and horizontally
- With two hand binding traps to fix arm

Main features

- Use high quality su304 stainless steel
- Inside of pad is soft sponge
- Thickness of pad : 60mm
- Install on side rail, including two hand binding straps, clamp sold separately



#1510.1000

Extension Board (Pelvis)

- Mainly used to extend the electric operating table
- It' s composed of Radiolucent board and support frame

Main features

- To use high quality su304 stainless steel and Radiolucent board
- Apply to COMFORT 300 operating table
- Extension Board Dimension: 524x250 (mm)



#1406.1000

Arm Rest (Lateral Position)

- Use to support and fix patient' s arm
- It' s composed of supporting rod, supporting board and pad
- The angel can be adjusted itself, and the height as well.
- With two hand binding traps to fix arm

Main features

- Use high quality su304 stainless steel
- Inside of pad is soft sponge
- Thickness of pad : 60mm
- Install on side rail, including two hand binding straps, clamp sold separately



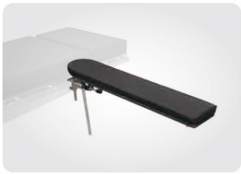
#1513.0002

Hand Protector

- Mainly use to protect patient' s body and arm
- Use high quality stainless steel

Main features

- Inside of liner is soft sponge
- Dimension: 460x150x130 (mm)
- Install on the side rail



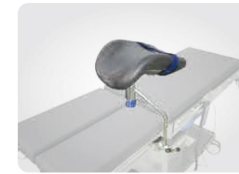
#1601.0186

Height Adjustable Arm Rest

- Use to support and fix patient' s arm
- It' s composed of supporting rod, supporting board and pad
- It can rotate freely, height is adjustable
- With two hand binding traps to fix arm

Main features

- Use high quality su304 stainless steel
- Inside of pad is soft sponge
- Thickness of pad : 60mm
- L x w : 660x140 (mm)
- Install on side rail, including two hand binding straps, clamp sold separately



#5737.0001

Luxurious Lithotomic Leg Support

- bigger size
- adjustable freely
- with binding strap

Main features

- Use high quality su304 stainless steel
- Its sponge with leather, soft and cozy
- Install on side rail, clamp sold separately



#1508.0000 /1601.0270

Arm Surgery Assistant Board /Carbon Fiber Surgery Board

- Use to support and fix patient' s arm
- It' s composed of supporting frame, supporting board and pad
- Radiolucent

Main features

- Use high quality su304 stainless steel and radiolucent board (Carbon fiber is optional)
- Inside of pad is soft sponge
- Thickness of pad : 60mm
- L x W : 800x350(mm)
- Install on side rail ,need equip with another tow clamps(#1402.2000)



#1601.0051

Leg Hanging Frame

- Use to support and fix patient' s leg and hand
- it' s composed of supporting frame and hanging strap
- Height is adjustable
- It rotate freely

Main features

- Use high quality su304 stainless steel
- Install on side rail, clamp sold separately

Clamp



#1402.0000

Non-adjustable Clamp

- Use to fix round or square surgical accessories
- It's composed of Clamp and handle
- Accessories position cannot be adjusted

Main features

- Use high quality SU304 stainless steel
- Applicable to $\Phi \leq 16\text{mm}$ round rod accessories and profile $\leq 6 * 25\text{mm}$ rectangular accessories
- Install on the side rail



#1401.0000

Adjustable Clamp

- Use to fix operating table accessories
- It's composed of Clamp and handle
- It can be adjusted freely

Main features

- Use high quality SU304 stainless steel
- It can fix $\Phi \leq 16\text{mm}$ round rod accessories
- Install on the side rail



#1402.2000

Square Clamp

- Use to fix operating table accessories
- It's composed of Clamp and handle
- It cannot be adjusted

Main features

- Use high quality SU304 stainless steel
- Applicable to $\Phi \leq 16\text{mm}$ round rod accessories and profile $\leq 6 * 25\text{mm}$ rectangular accessories
- Install on the side rail



#1601.0026

Square Pipe Clamp

- Use to fix operating table accessories
- It's composed of clamp and handle
- It can be adjusted freely

Main features

- Use high quality SU304 stainless steel
- Fix 25mmx25mm square pipe
- Install on the side rail

Waste Basin & Sponge Position Pad



#1404.3000

Stainless Steel Waste Basin

- Use to contain surgery waste



#1415.0008

Prone Position Pad (Sponge)



#1409.0000

Single Side Instrument Basin Rack

- Use to place instrument basin
- It is used with instrument basin 1409.0001



#1415.0003

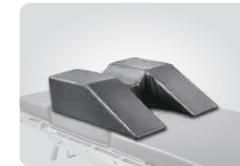
Knee Position Pad (Sponge)



#1415.0004

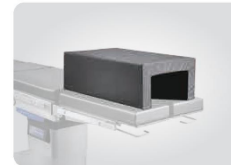
Semi-round Pad (Sponge)

- To be used under the knee



#1415.0005

Head and Shoulder Pad (Sponge)



#1415.0006

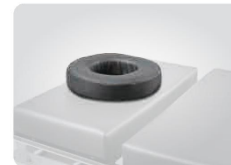
Lateral Position Leg Pad

- Tunnel Pad



#1415.0007

Lateral Position Pad (Sponge)



#1415.0001

Head Ring