

Cordis EXOSEAL™

Vascular Closure Device

Maximise Clinical Safety*

An approach to secure
and easy closure



There were no MAEs (defined below) or deaths during the ECLIPSE trial confirming noninferiority of the EXOSEAL™ VCD compared with manual compression with respect to the primary safety endpoint. MAE is defined as: 1) need for vascular repair by surgical or nonsurgical techniques; 2) bleeding requiring a blood transfusion; 3) infection requiring antibiotics, extended hospitalization, or both; 4) new onset ischemia of the ipsilateral lower extremity; 5) need for surgical repair of access-site-related nerve injury; or 6) permanent access site-related nerve injury.

Cordis **EXOSEAL™**

Vascular Closure Device

For clinically safe*, confident close resulting in improved patient outcomes, use the Cordis EXOSEAL™ Vascular Closure Device

- **Easy-to-Use Functionality**
- **Trusted Bioabsorbable Technology**
- **Precise Extravascular Closure**
- **Excellent Clinical Results***

*Clinical data from the "ECLIPSE Trial" indicates safety in terms of vascular injury, access site-related bleeding, infection or nerve injury, new ipsilateral lower extremity ischemia or SAE Wong et al JACC Cardiovasc Interv. 2009 Aug;2(8):785-93. E.

Access, Diagnose and Treat with the Complete Line of Products and Services from Cordis

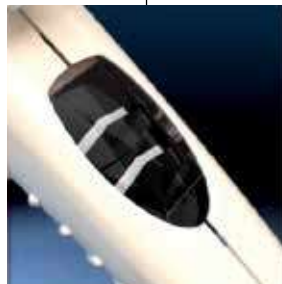
Since 1959, Cordis has been a leader in the market offering best-in-class access, diagnostic and treatment solutions. Over the past five decades, our product offering has grown to become one of the largest in the industry. With high performing solutions to help support sustained patient outcomes, Cordis has become the full-line partner of choice.

Product Features



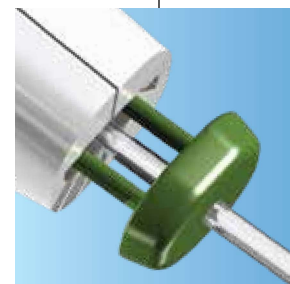
Deployment Button

Lockout feature reduces risk of intravascular plug deployment.



Indicator Window

Provides indication of extravascular position before deployment.



Sheath Adapter & Wire Loop Release

- Compatible with introducer sheath (sheath exchange not required)**
- Minimises chance of infection and inflammation → Maximises patient comfort.

Cordis EXOSEAL™ Closure Device provides

**Compatible with sheaths up to 12 cm.

Product Features

Cordis EXOSEAL™

Vascular Closure Device

Maximise Clinical Safety* in Closure

Designed for accurate placement, secure extravascular deployment and reduced complication rates.*



Bleed-Back System

Provides visual indicator for secure extravascular plug deployment.



Indicator Wire

Nitinol indicator wire provides gentle and precise feedback to ensure extravascular plug placement.

precise and secure extravascular arterial closure.

The Novel Choice.

Introducing the Cordis EXOSEAL™
Vascular Closure Device.

**Combining clinical safety*
and ease-of-use, the Cordis
EXOSEAL™ Vascular Closure Device
means a more confident close and
improved patient outcomes.**

- Easy-to-Use Functionality
- Trusted Bioabsorbable Technology
- Precise Extravascular Closure
- Excellent Clinical Results*

Bioabsorbable Technology



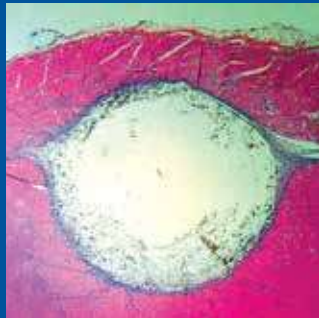
Clinically Safe* and

Trusted, Synthetic Plug Closure

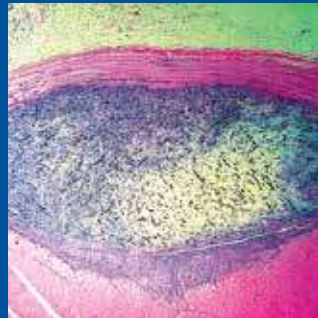
The Cordis EXOSEAL™ Vascular Closure Device uses a Polyglycolic Acid (PGA) plug material to securely close the femoral artery puncture site while causing low tissue reactivity to minimise access site complications.*

Plug Absorption Characteristics

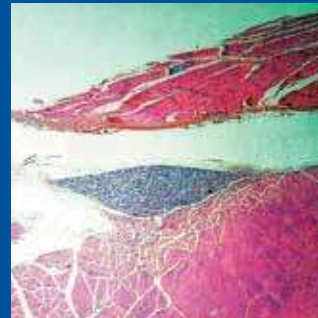
PGA plug material absorption and tissue reaction assessment in rat gluteal model¹



3 Days



14 Days



60 Days

Effective

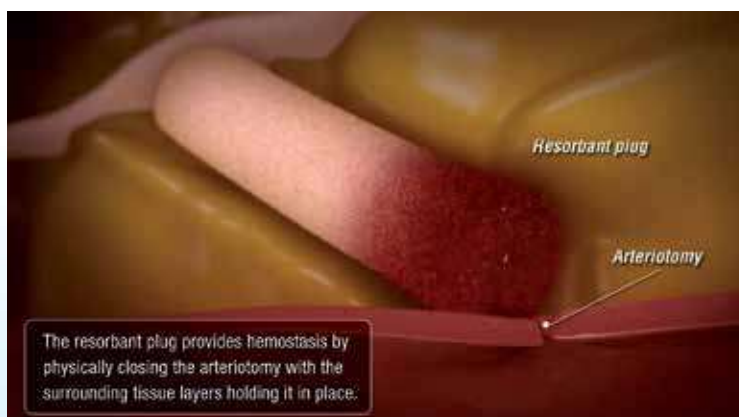
Why a PGA Plug is Safe*:

- PGA has a long history in medical use
- PGA is not made from animal tissue
- Fully resorbed within 60-90 days

¹ Data on file at Cordis

Secure Extravascular Closure

- Confident, extravascular positioning of bioabsorbable plug
- Plug is held securely in place by surrounding tissue



Extravascular Positioning

Secure and Precise Extravascular Placement

- Eliminates any possibility of intravascular deployment
- Deploys haemostatic plug without impeding arterial blood flow
- Provides two visual signals to increase operator confidence and patient comfort



BLACK-WHITE

Device not yet positioned to deploy.
Lockout feature activated.



BLACK-BLACK

Deploy, if significantly reduced bleed-back is also seen from bleed-back window.



BLACK-RED

Release slight tension on device until window shows BLACK-BLACK. Otherwise switch to manual compression.



THE PARTNER OF CHOICE FROM "STICK TO SEAL"

Cardiovascular

PTCA Balloons

EMPIRA™ Balloons Catheters
EMPIRA™ NC Balloons Catheters

Catheter sheath introducers

AVANTI™+ Sheath Introducer

Coronary Stent Family

BioFreedom™ Drug Coated Coronary Stent System
BioMatrix Alpha™ Drug-Eluting Coronary Stent System
BioMatrix NeoFlex™ Drug-Eluting Coronary Stent System
Chroma™ Coronary Stent System
LUMENO™ Free Drug Coated Coronary Stent System
LUMENO™ Alpha Drug-Eluting Coronary Stent System
LUMENO™ Chrome Coronary Stent System

Diagnostic catheters

7F HIGH FLOW
INFINITI™ Catheters
QUICK CARE 4F INFINITI™ Catheters
SUPERTORQUE™ Plus Catheters

Diagnostic guidewires

EMERALD™ Diagnostic Guidewire

Emboli protection device

ANGIOGUARD™ RX Emboli Capture Guidewire System

Guiding catheters

ADROIT™ Guiding Catheter
Long VISTA BRITE TIP™ Guiding Catheter
VISTA BRITE TIP™ Guiding Catheter

Steerable guidewires

ATW™ Guidewire
ATW™MW Guidewire
REFLEX™ Steerable Guidewire
SHINOBI™ PLUS Steerable Guidewire
SHINOBI™ Steerable Guidewire
STABILIZER™ Balance Performance Steerable Guidewire
STABILIZER™MW Steerable Guidewire
WIZDOM™ Steerable Guidewire

Endovascular

Catheter sheath introducers

AVANTI™ + Sheath Introducer
BRITE TIP™ Interventional Sheath Introducer

CTO catheters

ELITECROSS™ Support Catheter
FRONTRUNNER™ XP CTO Catheter
OUTBACK™ Elite Re-entry Catheter
OUTBACK™ LTD™ Re-entry Catheter

Diagnostic catheters

NYLEX™ Angiographic Catheter
SUPER TORQUET™ Angiographic Catheter
SUPER TORQUET™ MB Angiographic Catheter
TEMPO™ Angiographic Catheter
TEMPO™ AQUA Hydrophilic-Coated Angiographic Catheter

Diagnostic guidewires

AAA Stent Graft System
EMERALD™ Guidewire
INCRAFT™ AAA Stent Graft System

Emboli protection device

ANGIOGUARD™ RX Emboli Capture Guidewire System

Guiding catheters

VISTA BRITE TIP™ Guiding Catheter
VISTA BRITE TIP™ IG Introducer Guiding Catheter

Pre-mounted balloon expandable stents

.014" PALMAZ™ BLUE™ 0.14 Peripheral Stent
.018" PALMAZ™ GENESIS™ Peripheral Stent on SLALOM™ Delivery System
.018" PALMAZ™ BLUE™ 0.18 Peripheral Stent
.035" PALMAZ™ GENESIS™ Peripheral Stent on OPTA™ Pro .035" Delivery System

PTA balloons

.014" RX AVIATOR™ Plus PTA Balloon Dilatation Catheter
.014" RX SLEEK™ PTA Balloon Dilatation Catheter
.018" OTW SAVVY™ Long PTA Balloon Dilatation Catheter
.018" OTW SAVVY™ PTA Balloon Dilatation Catheter
.018" OTW SLALOM™ PTA Balloon Dilatation Catheter
.035" OTW MAXI™ LD PTA Balloon Dilatation Catheter
.035" POWERFLEX™ Pro PTA Balloon Catheter
.035" OTW POWERFLEX™ Extreme PTA Balloon Dilatation Catheter
SABERX™ PTA Dilatation Catheter

Self-expanding stents

.014" PRECISE™ PRO RX™ Nitinol Stent System
.035" Long S.M.A.R.T.™ Nitinol Stent System
.035" S.M.A.R.T.™ CONTROL™ LARGE Nitinol Stent System
.035" S.M.A.R.T.™ CONTROL™ Nitinol Stent System
S.M.A.R.T.™ Flex Vascular Stent

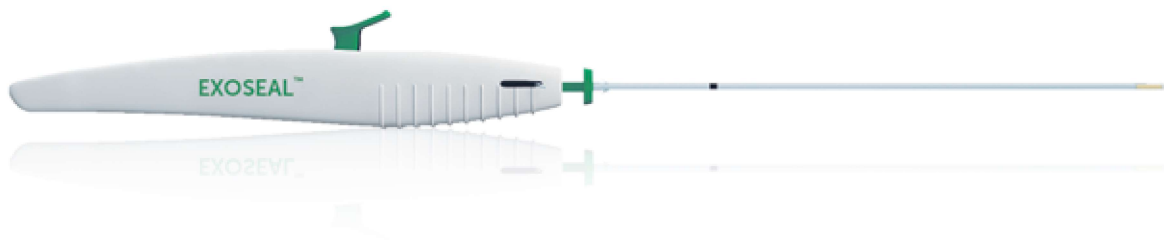
Steerable guidewires

.014" ATW™ Steerable Guidewire
.014" STABILIZER™ Peripheral Steerable Guidewire
.018" SV Steerable Guidewire
.035" AQUATRACK™ Hydrophilic Nitinol Guidewire
.035" JINDO™ Tapered Steerable Guidewire
.035" STORQ™ Steerable Guidewire

Unmounted balloon expandable stents

PALMAZ™ GENESIS™ Peripheral Stent
PALMAZ™ XL Balloon Expandable Stent for Large Vessels

CSI's FRENCH SIZE	CATALOGUE NUMBER	DESCRIPTION
5F	EX500CE	EXOSEAL™ - to be used with a 5 F sheath introducer up to 12 cm
6F	EX600CE	EXOSEAL™ - to be used with a 6 F sheath introducer up to 12 cm
7F	EX700CE	EXOSEAL™ - to be used with a 7 F sheath introducer up to 12 cm



*Clinical data from the "ECLIPSE Trial" indicates safety in terms of vascular injury, access site-related bleeding, infection or nerve injury, new ipsilateral lower extremity ischemia or SAE. Wong et al JACC Cardiovasc Interv. 2009 Aug;2(8):785-93.

For Healthcare Professionals Only.

Important information: Prior to use, refer to the instructions for use supplied with this device for indications, contraindications, side effects, suggested procedure, warnings and precautions. As part of its continuous product development policy, Cordis reserves the right to change product specifications without prior notification. Please contact your Cordis representative for additional product availability information.

CORDIS, Cordis LOGO and EXOSEAL are trademarks of Cordis and may be registered in the US and/or in other countries. © 2022 Cordis. All Rights Reserved. 100567923-2 10/2022