

LOGIQ™ P Series | *Clinical Solutions*

MAKE IT EASY. MAKE IT YOUR OWN.



SPOTLIGHT ON OB & Gyn



Q&A Slido

B-mode Improvements all new SRI algorithms

↑ Improved Contrast

↓ Reduction in noise

↑ Clear delineation of borders

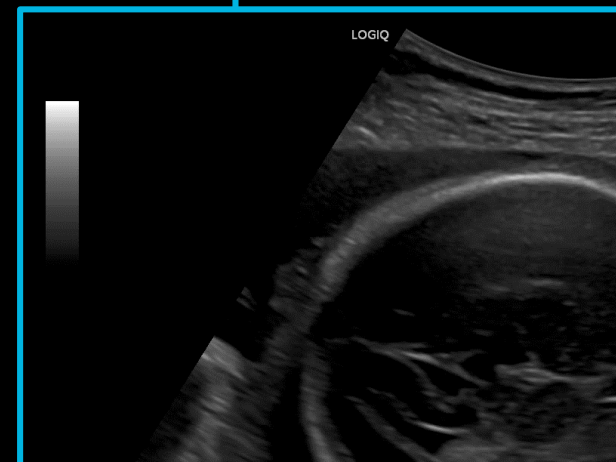
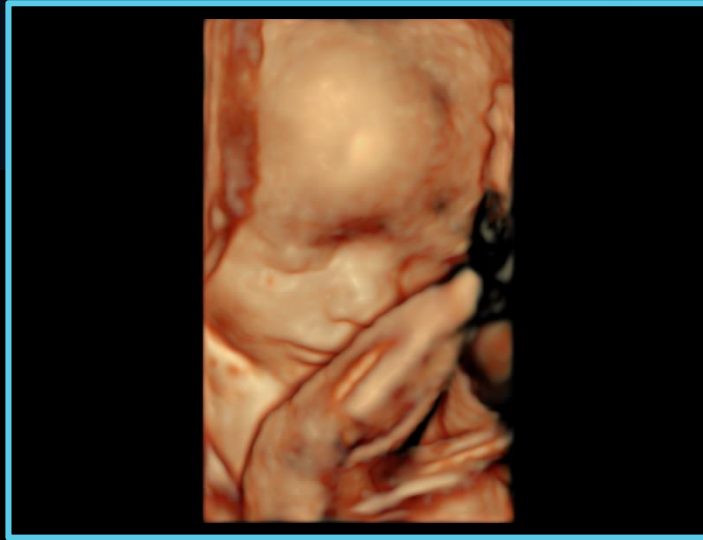


Image Quality

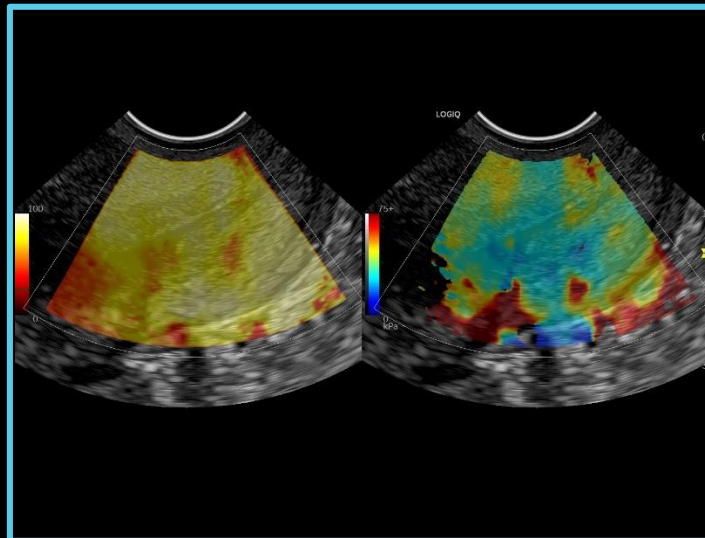
3D HDlive™ imaging of the fetus
with RAB2-6-RS



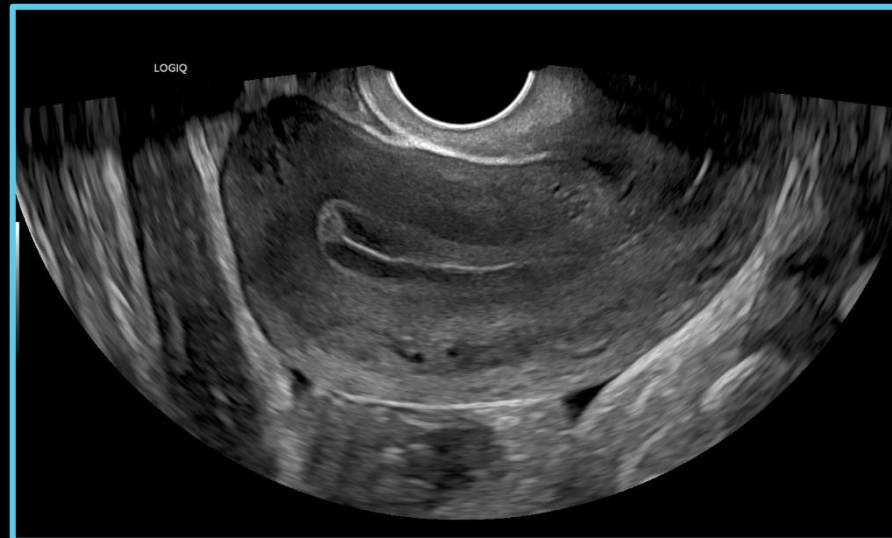
B-Flow™ HD Color obstetric,
With C1-5-RS



2D SWE Elasto with Quality
Indicator,
Cervix, IC9-RS



GYN 2D, IC9-RS



3D/4D Improvements

- ↑ Improved Scan time & Volume rate
- ↑ Smoother skin surface
- ↑ Improved border clarity



OB Measure Assist Addition

The screenshot displays the GE ultrasound software interface. On the left, a control panel includes buttons for 'My Page', 'MyTrainer', 'Reset', 'Reverse', and 'TGC'. Below these are mode selection buttons: 'B Mode', 'M Mode', 'Doppler Mode', 'Exam Calcs', and 'Options'. A 'PATIENT' section contains 'Worksheet' and 'Graph' options. A 'SCAN' section includes 'Measure Assist Settings', 'Ellipse', and 'Ellipse'. The 'END EXAM' section has 'BPD(Hadlock)', 'HC(Hadlock)', 'AC(Hadlock)', and 'FL(Hadlock)'. The 'KBD' section includes 'HL(Jeanty)' and 'AFI(Moore)'. The 'UTILITY' section has 'CX', 'CX Trace', and 'Volume'. A vertical probe selection menu on the right lists 'C3-10', 'L3-12', 'ML6-15', 'OB-2/3', and '12L'. The main display shows a fetal ultrasound image with a yellow measurement line and a data box at the bottom right indicating '1 HL 4.92 cm 29w0d'. The text 'LOGIQ' is visible in the top right of the image area.

Automatically measures standard biometry measurements
BPD, HC, AC, FL and now also HL (humerus length) .



SonoRender*live*

Easy and Quick Rendering Mode

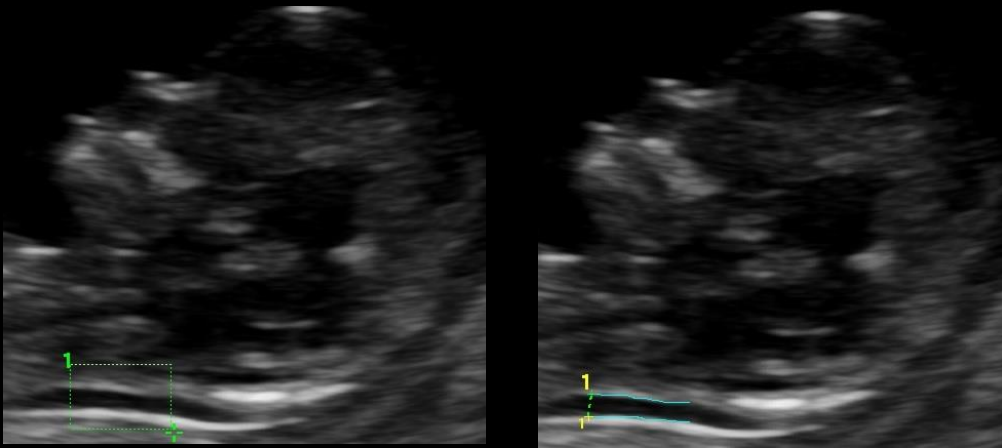
SonoRenderlive helps to find the render start position to easily separate solid tissue in front of the render object.

The SonoRenderlive algorithm “looks” for the transition from solid to liquid tissue and positions the “Render Start” into the liquid area visualized by the green render start line. The render start line is not a straight line but a “free” trace for optimal adaptation to the render object.



Semi Automated Measurement

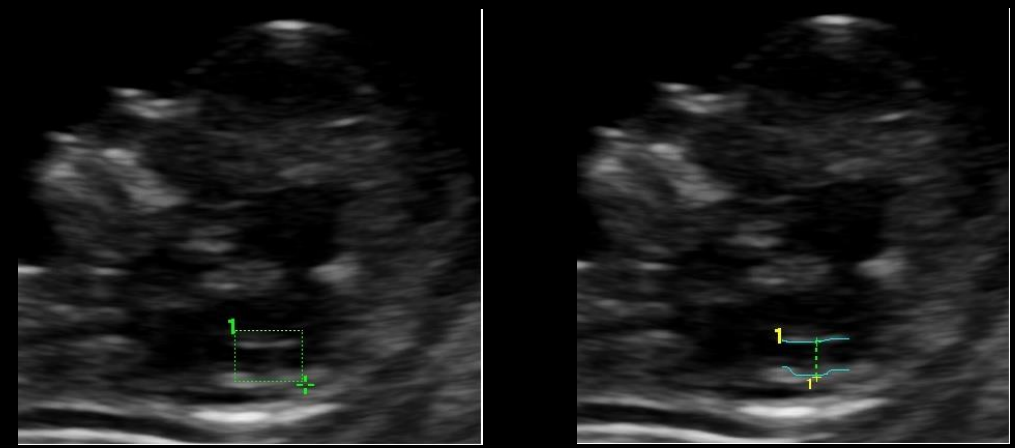
Obstetrics Tools : SonoNT & SonoIT



SonoNT (Nuchal Translucency)

UTILITY **NT** IT

SonoNT \updownarrow Up \updownarrow i-i \updownarrow
Select Face Method



SonoIT (Intracranial Translucency)

UTILITY **IT** NT

SonoIT \updownarrow Rt \updownarrow
Select Side

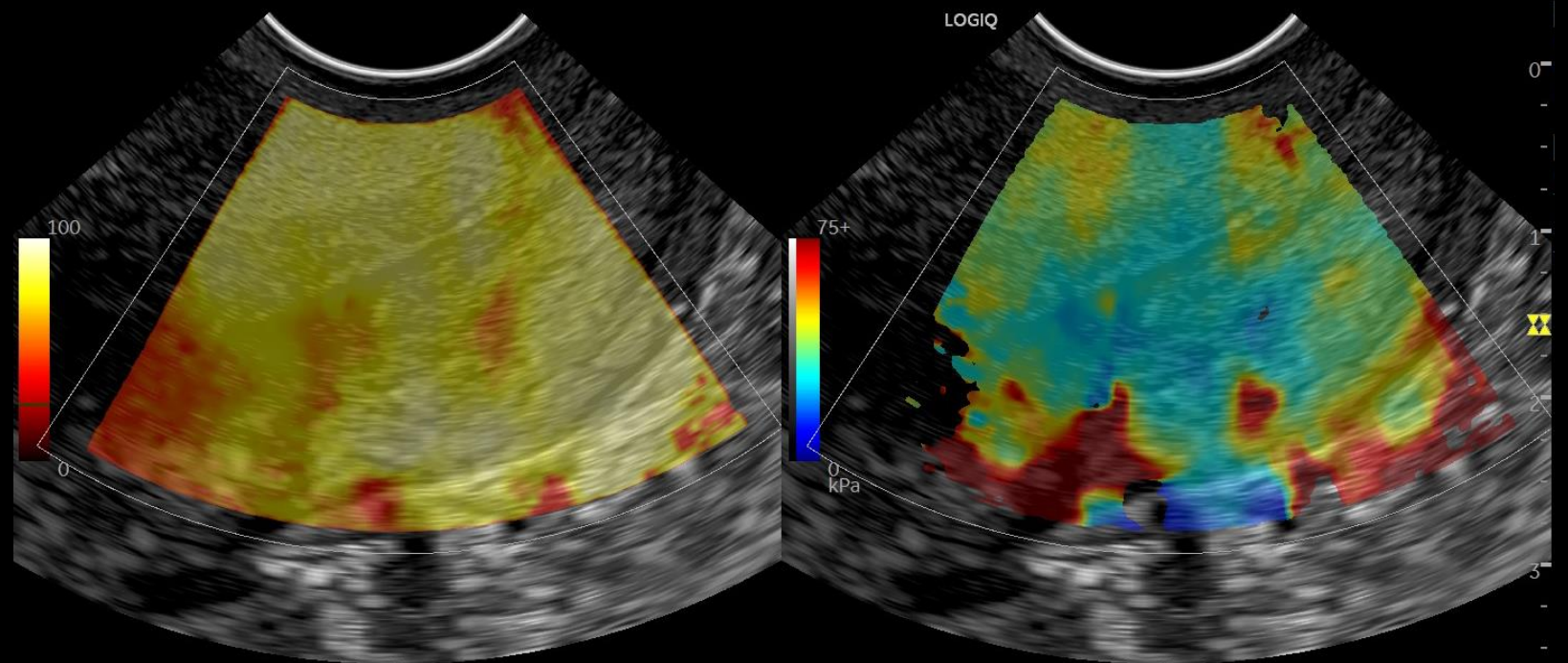


2D SHEAR WAVE ELASTOGRAPHY

Gynecological Assessment Tools

Quantitative measurement of tissue elasticity displayed in color-coded elastograms.

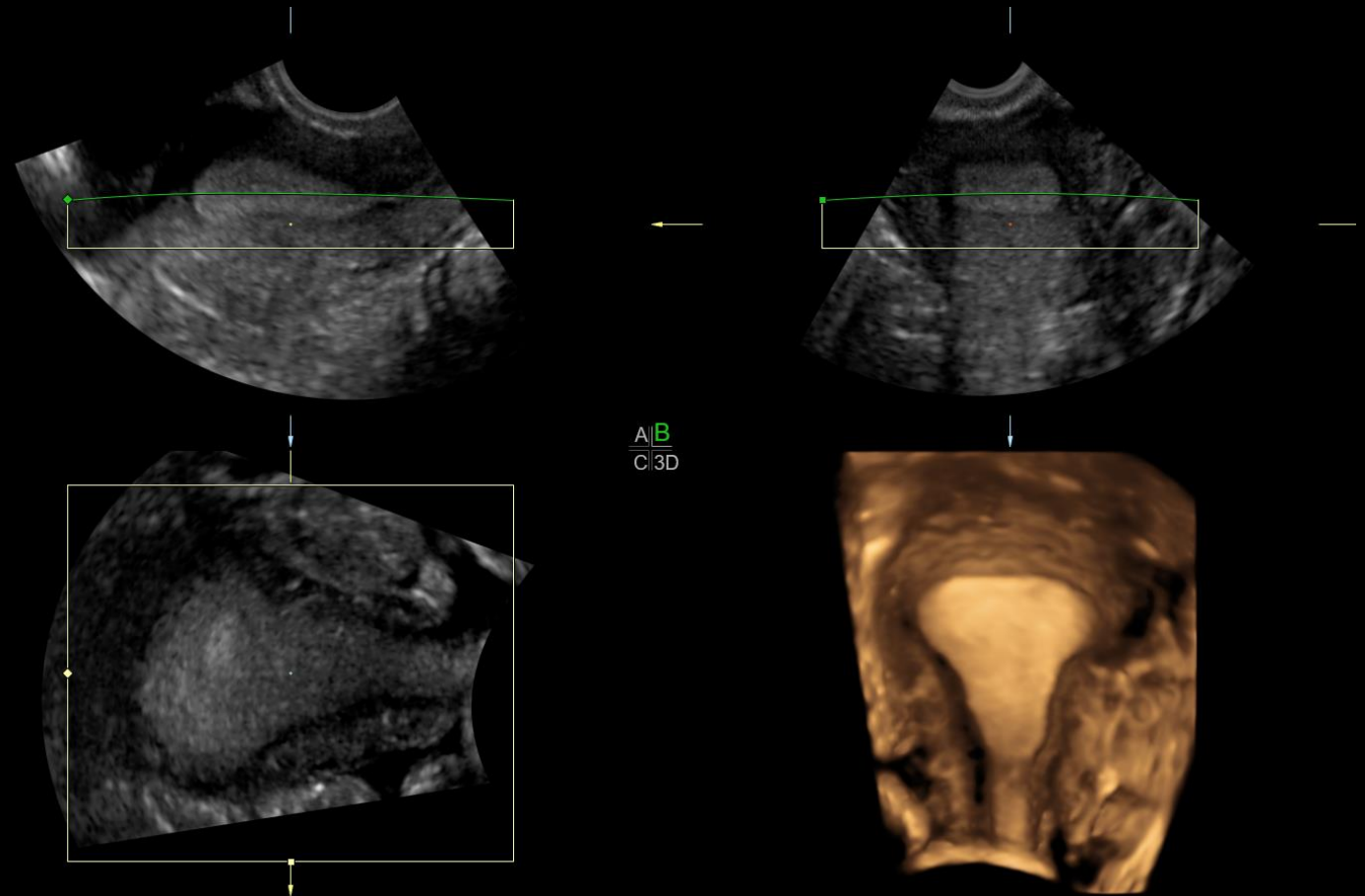
with Quality Indicator, Cervix, IC9-RS



3D RENDERING

Gynecological Assessment Tools

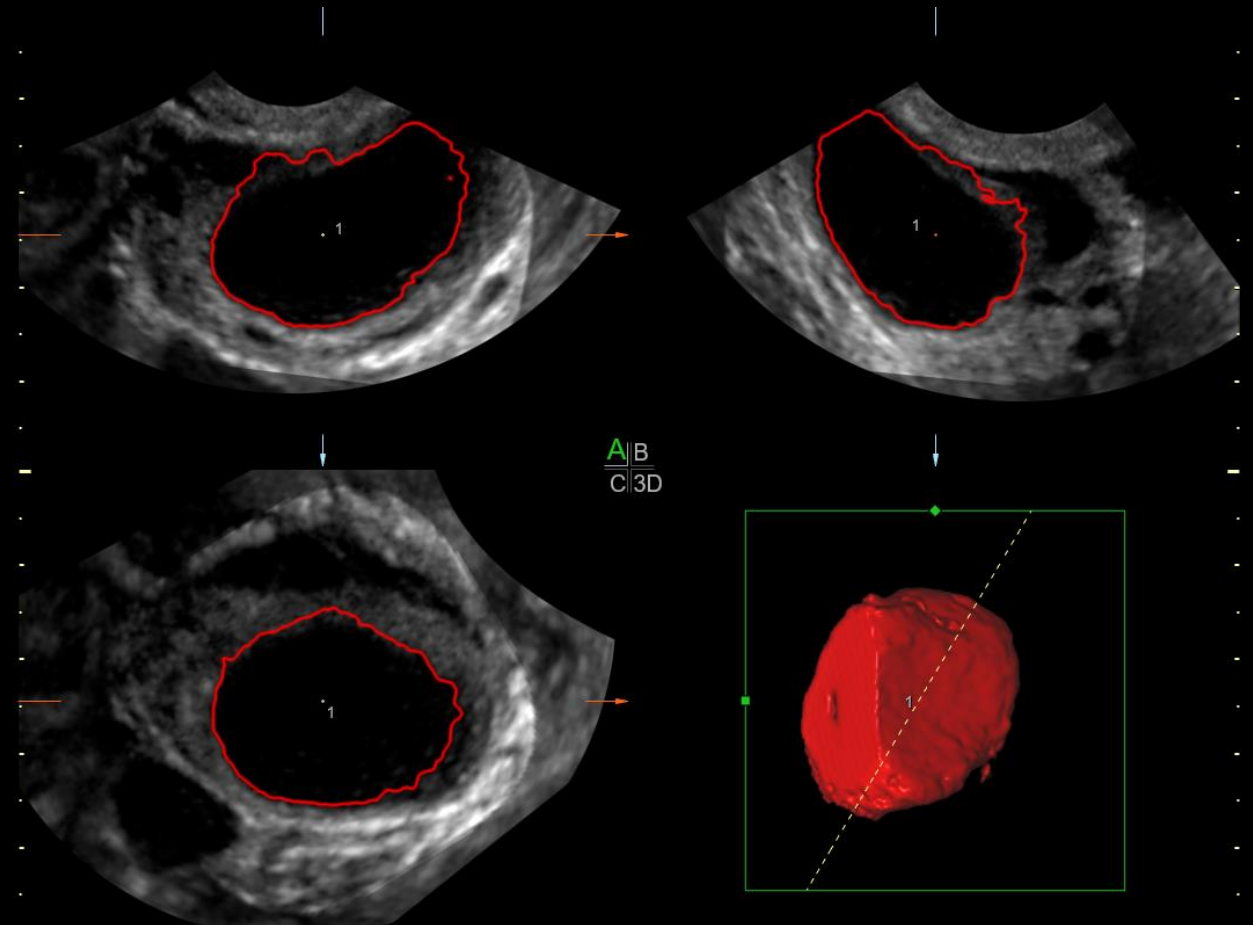
Advanced Volume Contrast Imaging (VCI) with OmniView – Diagnostic confidence in sonography requires the ability to differentiate irregular shapes with precision. This tool can help improve contrast resolution and visualization of the rendered anatomy with clarity in any image plane.



SonoAVC

Gynecological Assessment Tools

Automatic Volume Calculation - helps to identify and measure follicles and cystic areas within a 3D volume. It standardizes the process of follicular assessment and decreases inter-observer and intra-observer variability



LOGIQ™ P Series | *Obstetrics*

MAKE IT EASY. MAKE IT YOUR OWN.



Ammar Kamal

*GIUS Clinical Application and Education Leader
Emerging Markets (ME, NEA/SSA Africa and Turkey) at GE Healthcare*

