

### Tehcnical description

1. Helical swing with two figurines, intended for children aged 3-15 years. Made of dry, shaped wood, protected against weather and pests, with 1 helical spring. Equipped with 2 polyethylene seats and two handles fixed on two figurines made of HDPE. Dimensions: Length: 170 cm, width: 25 cm, height: 90 cm. The safety surface will be 13-15 m2.



**The same product will be produced according to the technical specifications.**

**Product name : single hdpe seesaw with double spring**

**Product code : INOX-SS-200**

---

2. Vertical swing helical arch figurine, intended for children aged 2–8 years, intended for a maximum number of 1 user, composed of: • galvanized stamped metal foundation assembly with a height of min 155 cm, width min 25 cm and length of min 105 cm; The safety surface will be 7 -8 m2.

- helical spring assembly, spring spiral of min ø18mm and height of 400-450 mm;
- figurines made of HDPE panels with a minimum thickness of 15 mm - high density polyethylene without toxic components;
- HDPE handles with metal inserts without toxic components according to the technical test report;
- HDPE footrests with metal inserts without toxic components
- HDPE seat
- screw and nut self-braking fasteners made of stainless steel
- PE caps and washers for the protection of screws and nuts.

. The fixing of the equipment will be done with a galvanized stamped metal foundation assembly, in B150 concrete foundation, at a depth of min 50cm, width of 40cm and length of 75cm.



**The same product will be produced according to the technical specifications.**

**Product name : hdpe spring rider with zebra figure**

**Product code : INOX-HDSR-100**

---

3. The seats will be made of HDPE material with tear resistance, UV stabilizers and non-toxic, in accordance with EN-71 The chains will be made of galvanized steel wrapped in a polypropylene sheath.



**The same product will be produced according to the technical specifications.**

**Product name : Rubber swing seat sheet-reinforced with Chain.** ( The chains will be made of galvanized steel wrapped in a polypropylene sheath)

**Product code : INOX-RSS-500**



4. straight slide Made of HDPE and will engage the tower. It will be provided with side protections with a height of 20 cm, the middle and lower part and 50 cm



**The same product will be produced according to the technical specifications.**

**Product name : H:150 cm STRAIGHT SLIDE**

**Product code : INOX-FS-150**



5. Helical slide, Made of fiberglass and will engage the tower. It will be provided with side protections with a height of 25 cm on the lower part, 30 cm on the middle part and 50 cm on the upper part. Dimensions: length - 300 cm, width - 50 cm, height of fall - 150 cm.

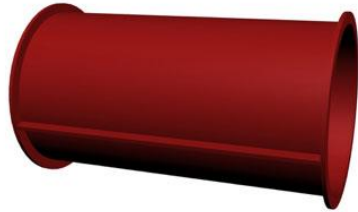


**The same product will be produced according to the technical specifications.**

**Product name : H:150 cm SPIRAL SLIDE**

**Product code : INOX-SS-150**

6. Connection tube, Made of PAFS, fixed on the metal fence structure with screw-nut fasteners. Dimensions: diameter - 800 mm; length - 150 cm. –



**The same product will be produced according to the technical specifications.**

**Product name : 150 cm TUBE PART, dia:80 cm**

**Product code : INOX-TSP-150**



7. Roof tower, Made of wood with machined surfaces, without splinters, cracks or other defects that could cause harm to children, being protected and colored by impregnation with preventive protection products, respectively by coating with paint.

The wooden poles (4 pcs) will have a square section of at least 90 x 90 mm. A PAFS roof will be provided on the upper parts of the pillars, with a size of 120 x 120 cm and a height of 50-60 cm. Between the pillars, as the case may be, there will be parapets made of metal fence structure protected against corrosion and fixed to the pillar by embedding, as well as wooden plates with the approximate size of 100x5x4 cm

Minimum equipment dimensions: length 105 cm, width 105 cm, height 250 cm. The fixing of the equipment will be done through 4 metal supports that prevent the direct contact of the wood with the ground, in concrete foundation B150, at a depth of 75



**The same product will be produced according to the technical specifications.**

**Product name : WOOD SINGLE TOWER FOR PLAYGROUND**

**Product code : INOX-WPT-025**

8. Stairs for access, Equipped with steps made of wood with approximate dimensions of 90 x 20 x 4 cm, as well as with railings made of inclined metal fences that will contain wooden plates. The fasteners will be screw-nut assembly buried in the wooden structure and protected with plastic covers



**The same product will be produced according to the technical specifications.**

**Product name : WOOD STAIR FOR PLAYGROUND**

**Product code : INOX-WPS-010**

---

**1st class SWEDISH PINE will be used as the tree type in all wooden products.**

Sincerely

Administrator: Kazım TAVUKÇUOĞLU

**simat** Simat Otis Eğitim Matzemeleri  
Paz. Gıda, Dış Tic. ve San. Ltd. Şti.  
Fevzi Çakmak Mah. Ayvılız Cad. No: 5/A Kat: 1 / KONYA  
Tel: 0332 347 2000 - Faks: 0332 347 2001  
Selçuk Vad. Dairesi : 770 044 2427