

### How to read production date of a battery:

#### 1. VARTA / BOSCH / CARTECHNIC / ENRG

The number is pressed-out (burnt-out) on top cover of the battery.

Exemplary code:

**H3B 378 121 0651**

(Factory code) (Year) (Month) (Shift) (Number of piece)

Year : **1**=2021, **2**=2022, **3**=2023

Month: **37**=January, **38**=February, **39**=March, **40**=April, **73**=May, **74**=June, **75**=July, **76**=August, **77**=September, **78**=October, **79**=November, **80**=December

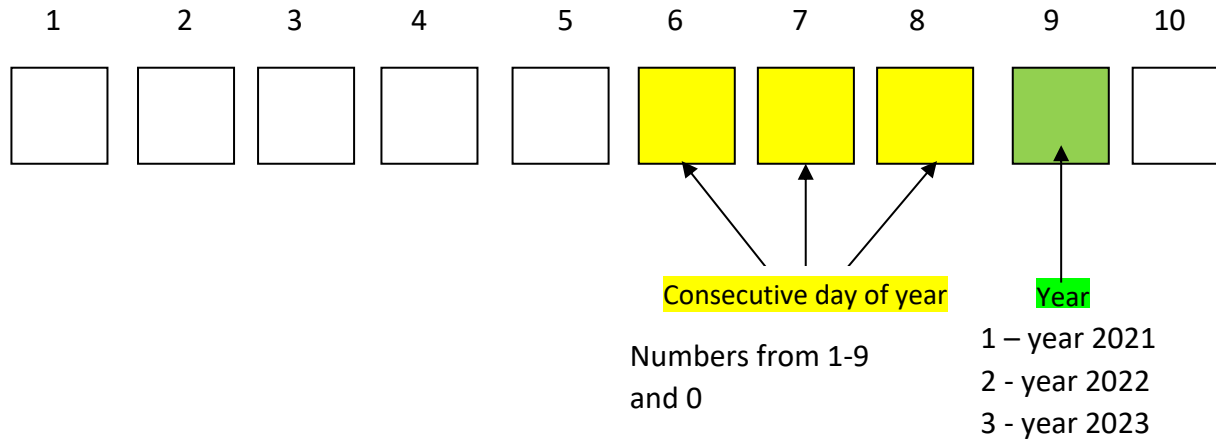
E.g.: Production date code „**H3B 378 121 0651**” means that the battery was manufactured in **October 2023**.

#### 1.2 BOSCH /VARTA/ - START&STOP



Date: Year 2016; Week 24.

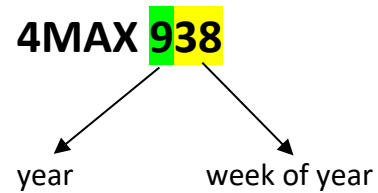
## 2. 4MAX from Jenox burnt-out on the top cover.



E.g.: 6BAII1533K means that the battery was manufactured ( 153 – day, 3 – 2023) on 8th of June 2023.

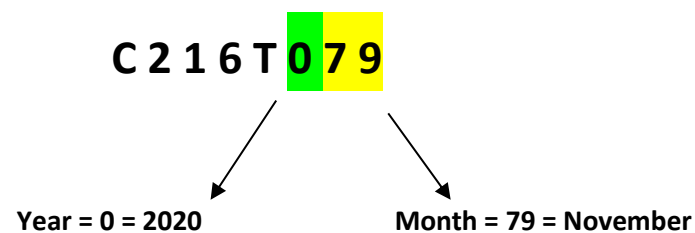
## 3. 4MAX from Auto Parts burnt-out on the top cover.

On the cover there is a description:



938 – 38<sup>th</sup> week 2019, *23<sup>rd</sup> of September 2019* (just like on tyres)

#### 4. Exide burnt-out on the top cover.



Date of production is signed by last three numbers of code placed on the battery.

Third number from the end of code = year of production (eg. 0 = 2020; 1 = 2021; 2 = 2022)

Last two numbers are month of production:

Month: 37=January, 38=February, 39=March, 40=April, 73=May, 74=June, 75=July, 76=August, 77=September, 78=October, 79=November, 80=December

#### 1.6 OPTIMA batteries





# Decoding Manufacturing Codes

Document No.  
GYSUK 020

Appendix F

Supplier: **Global**

Supplier code: 28

Example Code: KS8J27

Code location: On top of lid;  
front and  
centre.

|              |        |
|--------------|--------|
| Example Code | KS8J27 |
| 1st Digit    | Plant  |

|              |                 |
|--------------|-----------------|
| Example Code | KS8J27          |
| 2nd Digit    | Production line |

|              |        |
|--------------|--------|
| Example Code | KS8J27 |
| 3rd Digit    | Year   |

|              |               |
|--------------|---------------|
| Example Code | KS8J27        |
| 4th Digit    | Month of Year |

|                 |                   |
|-----------------|-------------------|
| Example Code    | KS8J27            |
| 5th & 6th Digit | Date of the month |

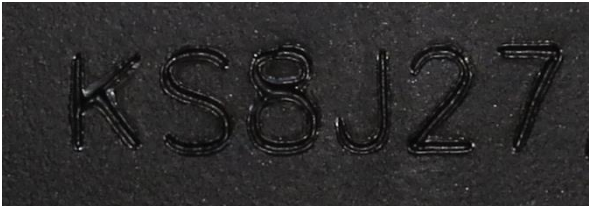
|   |         |
|---|---------|
| K | Korea 1 |
|---|---------|

|   |        |
|---|--------|
| S | Line S |
|---|--------|

|   |      |
|---|------|
| 3 | 2013 |
| 4 | 2014 |
| 5 | 2015 |
| 6 | 2016 |
| 7 | 2017 |
| 8 | 2018 |
| 9 | 2019 |
| 0 | 2020 |
| 1 | 2021 |
| 2 | 2022 |
| 3 | 2023 |
| 4 | 2024 |

|   |           |
|---|-----------|
| A | January   |
| B | February  |
| C | March     |
| D | April     |
| E | May       |
| F | June      |
| G | July      |
| H | August    |
| I | September |
| J | October   |
| K | November  |
| L | December  |

|    |      |
|----|------|
| 27 | 27th |
|----|------|



**Battery Department**  
**Inter Cars S.A.**