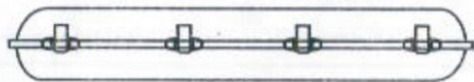
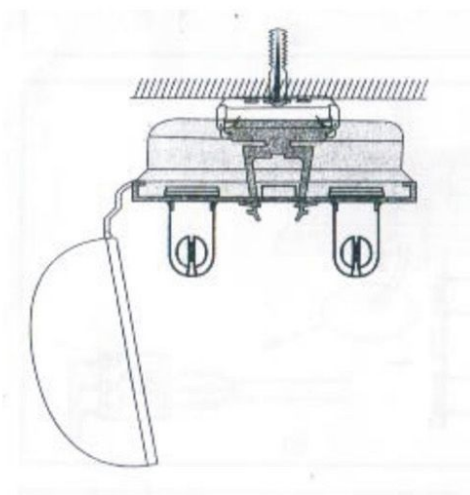


## Three, replacing tube and repairing method

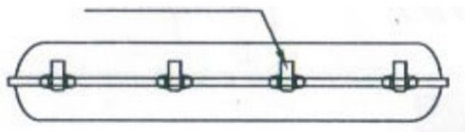
1.Open the clips



2.Let the cover be in hang, install and replace tube



3.Fix the cover, close clips, it is ok when the cover is hold down



Pay attention :

When install or replace the tube, electrical source must cut off.

# ELMOS

## Stationary fluorescence LED light

### Waterproof fluorescence LED light

### Installation operation specification

Working Voltage: 220V-240V

Frequency: 50Hz or 60Hz

Tube type: T8LED tube,LED strips

Level of protection: IP65

## Features

~ Cover is made of PS, PC or PMMA, high transmitting engineering plastics. It has multiple-mirror prismatic ribbing to achieve good effect of optical.

~ Housing is made of engineering plastics ABS or PC to ensure luminaire's sturdiness and durability

~ Electrical appliances board is made of mobilizable spouting plastic metal plate to make installation and repairing more easily.

~ One end of the housing has incoming line hole and waterproof joint M18X1.5 (PG11). Down-lead specification is HO5RNF3X1mm<sup>2</sup> or 3X1.5mm<sup>2</sup>

~ Installation method is ceiling-mounted or derrick boom.

~ Products accord with standards of GB7000.1, GB7000.10, EN60598-1, EN60598-2-1, EN55015, EN61547 standards and so on.

~ It can select high frequency electronic ballast or energy efficient inductors ballast

~ Suspended cover and bayonet mount installation, make installation and maintenance more easily

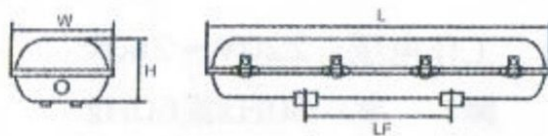
## Suitable location

The lamps have functions of dustproof, anti-corrosion and waterproof, and suitable for outdoors, heavy court, for example: public area, industrial land, car park, factory, swimming pool, and kitchen

## Pay attention

This light can not use under wicked condition.  
Drill hole at any place of the light is prohibited.

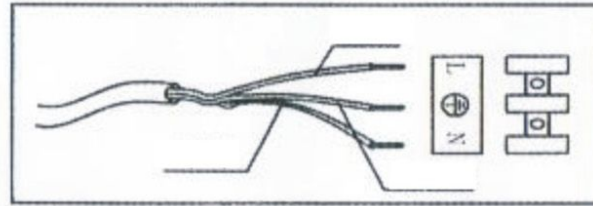
## Products details



Model	Power	Length(mm)	Width(mm)	Height(mm)	Center distance
GL-E001	T8 1x18W	660	85	90	451
GL-E002	T8 2x18W	660	130	90	451
GL-E003	T8 1x36W	1265	85	90	670
GL-E004	T8 2x36W	1265	130	90	670
GL-E006	T8 2x58W	1565	130	90	950
GL-HS001	T8 1x18W	665	60	70	350
GL-HS002	T8 2x18W	665	93	70	350
GL-HS003	T8 1x36W	1265	60	70	745
GL-HS004	T8 2x36W	1265	93	70	745
GL-LED-20	1x20W	1225	59	85	630
GL-LED-40	2x20W	1225	100	85	630

## ONE, Wiring way

- 1.The live wire of power line inserts wiring terminal that is marked "L"
- 2.The ground lead of power line inserts wiring terminal that is marked "⊕"
- 3.The zero line of power line inserts wiring terminal that is marked "N"

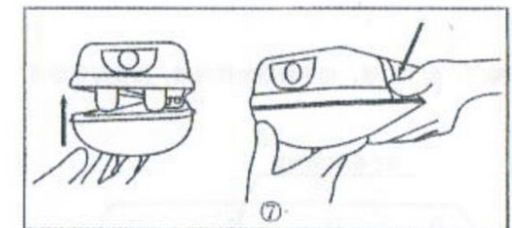
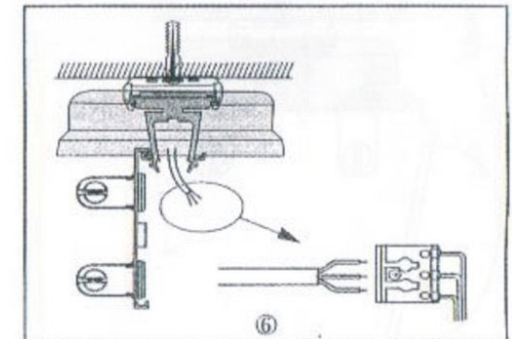
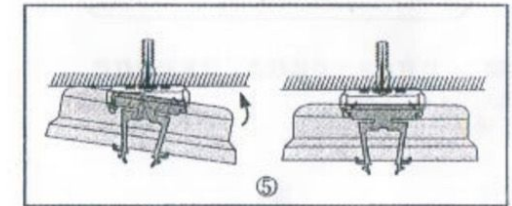
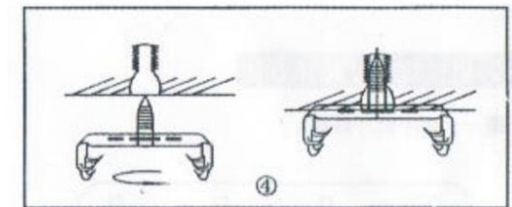
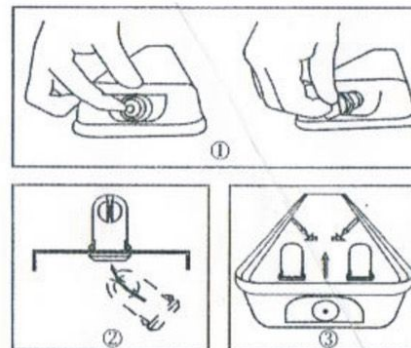


## Pay attention

- 1.Allocation must be fixed by professional.
- 2.When connection, external power source must be cut off.
- 3.When connection, conductor of outside power line should not bar

## Two, Installation

- 1.Fix waterproof joint(see picture one), install lamp holder(see picture two), set up electrical equipment board (see picture three).
- 2.At the mounting surface drill mounting hole of expanding screw, (the pitch of expanding screw mounting hole refer to products details), fix expanding screw and ring, connect stainless steel ring and expanding screw(see picture four)
- 3.Let one side of the light enter hasp first, then barocline other side of light in order to let the light to connect the stainless steel ring perfectly(see picture five).
- 4.Let electrical equipment board to be in hang, connect power line (see picture six)
- 5.Install cover, and fix clips(see picture seven)
- 6.For installation of all parts, please see the following pictures.



## Pay attention

- 1.This product attaches expanding screw
- 2.Expanding screw must connect reliably .with installation plane, and make sure can bear the weight that is fourfold than the light