



— SINCE 1955 —  
**GUANGZHOU  
DOUBLE ONE**

GUANGZHOU DOUBLE ONE LATEX PRODUCTS CO., LTD.



# Double One Company Profile

- \* It belongs to the world's top 500 Guangzhou Industrial Investment Holdings Group
- \* 70 years manufacturing experience.
- \* Factory area of 130,000 sqm.
- \* Annual production capacity of 900 million pieces of condoms, 33.5 million pairs of gloves.
- \* Condoms by 100% electronic testing.
- \* UNFPA condom pre-qualified supplier.

Double One was established in 1955 and was formerly state-owned Guangzhou No. 11 Rubber Factory. Double One has over 70 years professional experience manufacturing condoms and is the 1st latex condom manufacturer in China. Double One covers an area of 130,000 sqm with annual production capacity of 900 million pcs of condoms, and 33.5 million pairs of gloves.

Double One obtained a number of management systems including ISO9001, ISO14001, OHSAS18001, ISO13485 and SA8000, and international product certifications including CE, ANVISA and SABS, and Double One has been continuously listed as one of the UNFPA pre-qualified suppliers since 2008. Our condom products are sold well all over China, and exported to American, European, Africa and Southeast Asia countries.

Double One produced the 1st generation gloves in 1957. Through 70 years of continuous improvement and development, Double One brand household gloves, industrial gloves and rubber gloves have been penetrated world-widely including Middle-east, South-east Asian countries.

Double One will persist on developing innovation products and provide perfect after-sales service world-widely for continuous improvement to meet customer needs.





# Development History



Produced China's first condom, the first generation of military weather balloons.

**1956**

The first generation of medical gloves and industrial gloves were produced.

**1957**

Condom impregnation, electrical testing technology integration equipment won the national technology development outstanding achievement award.

**1988**

Double one brand bare condom product was awarded the Guangzhou Standard Achievement Award.

**1989**

Double one rubber condom won the title of Guangzhou famous brand products.

**1997**

Double one trademark won the title of famous trademark in Guangdong Province.

**2004**

Double one brand pavilion rubber condom won the title of China famous brand products.

**2007**

Double One was supplying 50 million condoms for the World Cup in South Africa.

**2010**

Double One has become the designated supplier of condom procurement of the United Nations Population Fund, and has become a partner of the United Nations global AIDS prevention cause.

**2013**

Double One partnered with the Brazilian Ministry of Health to deliver 200 million condoms directly.

**2014**

Double One is providing 200 million condoms for the Olympics in Brazil.

**2016**

Double One has partnered with the Brazilian Ministry of Health to deliver 470 million condoms directly.

**2018**

Distribution of 700 million condoms for the Brazilian Ministry of Health;

**2022-2024**

COMPANY ADDRESS: South Area of 3# Rubber Road, Chini Town, Huadu District, Guangzhou City, 510830, China  
TEL.: +86 20 84368172  
FAX: +86 20 84368172  
WEB: [www.doubleone.net](http://www.doubleone.net)

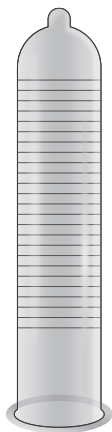
✉ [gzdoune@126.com](mailto:gzdoune@126.com)  
✉ [katry\\_doubleone@163.com](mailto:katry_doubleone@163.com)  
✉ [maydoubleone@163.com](mailto:maydoubleone@163.com)

# Double One Condom Specifications

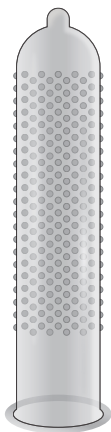
## Male Latex Condoms



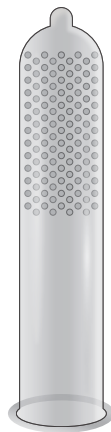
Smooth



Ribbed



Big-dotted



Dotted

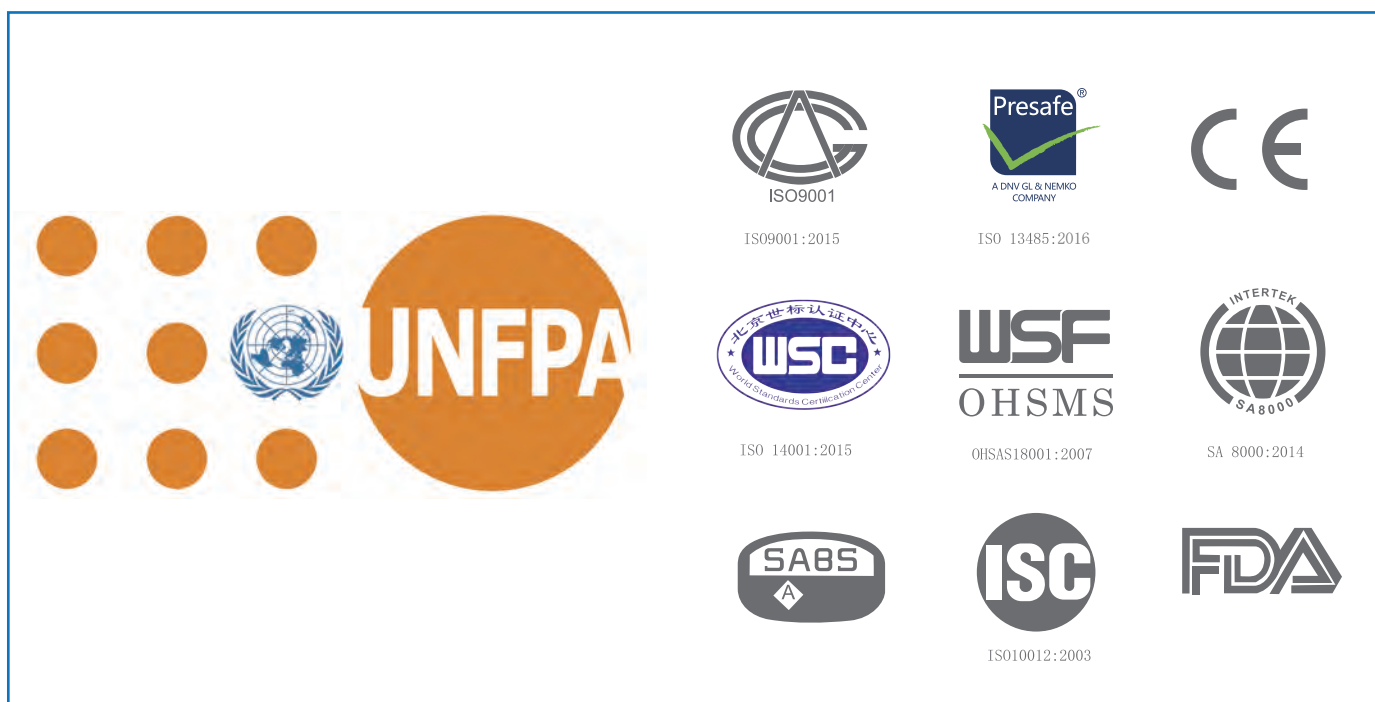


Ribbed/dotted  
combined



Rose  
patterned

Main Composition	Natural Latex
Nominal Length	≥160mm, ≥170mm, ≥180mm
Nominal Width	49±2mm, 52±2mm, 53±2mm, 55±2mm
Thickness	0.04 - 0.08mm
Colors	Natural, Pink, Orange and customerizable colors.
Flavors	Natural, Aloe, Vanilla, Mint, Jasmine, Grape, Blueberry, Strawberry, Rose, Lemon, Peach, Banana, Coffee and customizable flavors.





# Double One Condom Series



Smooth — No Color	
Main Composition	Natural Latex
Width	53mm
Packing Specification	3pcs
Type	Smooth
Flavor	Natural



Smooth — Red Color	
Main Composition	Natural Latex
Width	53mm
Packing Specification	3pcs
Type	Smooth
Flavor	Strawberry



Smooth — Purple Color	
Main Composition	Natural Latex
Width	53mm
Packing Specification	3pcs
Type	Smooth
Flavor	Grapes



Smooth — Yellow Color	
Main Composition	Natural Latex
Width	53mm
Packing Specification	3pcs
Type	Smooth
Flavor	Banana



Ultra Thin 003 XL	
Main Composition	Natural Latex
Width	55mm
Packing Specification	3pcs
Type	Smooth
Flavor	Natural



Ultra Thin 003 XL	
Main Composition	Natural Latex
Width	55mm
Packing Specification	3pcs
Type	Smooth
Flavor	Natural



Smooth	
Main Composition	Natural Latex
Width	52mm
Packing Specification	3pcs
Type	Smooth
Flavor	Natural



Rose-patterned	
Main Composition	Natural Latex
Width	52mm
Packing Specification	3pcs
Type	Rose-patterned
Flavor	Strawberry



Ribbed-No color	
Main Composition	Natural Latex
Width	53mm
Packing Specification	3pcs
Type	Ribbed
Flavor	Mint



Ribbed-No color	
Main Composition	Natural Latex
Width	53mm
Packing Specification	3pcs
Type	Ribbed
Flavor	Strawberry



Ribbed-No color	
Main Composition	Natural Latex
Width	53mm
Packing Specification	3pcs
Type	Ribbed
Flavor	Grapes

# Double One Condom Series



Smooth- Pink	
Main Composition	Natural Latex
Width	53mm
Packing Specification	5pcs
Type	Smooth
Flavor	Rose

Smooth- No Color	
Main Composition	Natural Latex
Width	53mm
Packing Specification	5pcs
Type	Smooth
Flavor	Mint

Smooth- Pink	
Main Composition	Natural Latex
Width	53mm
Packing Specification	5pcs
Type	Smooth
Flavor	Tutti Frutti

Ultra thin-No Color	
Main Composition	Natural Latex
Width	53mm
Packing Specification	5pcs
Type	Smooth
Flavor	Strawberry



Dotted-No color	
Main Composition	Natural Latex
Width	53mm
Packing Specification	12pcs
Type	Dotted
Flavor	Lemon

Dotted-No color	
Main Composition	Natural Latex
Width	53mm
Packing Specification	12pcs
Type	Dotted
Flavor	Strawberry

Dotted-No color	
Main Composition	Natural Latex
Width	53mm
Packing Specification	12pcs
Type	Dotted
Flavor	Orange

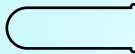



# Ultrasound Probe Cover (Clinical condom)

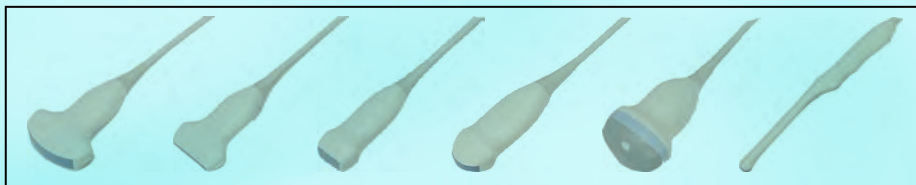
— Medical-grade Assurance, Professional-quality Care —

## SCOPE OF APPLICATION



Product Name	Ultrasound Probe Cover		
Lubricant	Without Lubricant, Methyl silicone oil Hyaluronic acid	Specification	W49、W52、W53、W55
Quantity	100 pcs/box	Length	≥180mm
Shelf Life	5 years	Standard	Q/HGSY 42 Ultrasound Probe Cover
Main Composition	Mainly made of natural rubber latex, disposable.		
Scope of application	It is compatible with ultrasound therapy instruments and installed on the sound transmission window of the treatment head to prevent cross infection between patients.		
Model	U type (without a reservoir tip)		
	Y type (with a reservoir tip)		

## ADAPTIVE



# Natural Latex Rubber Female Condom

— Medical-grade Assurance, Professional-quality Care —



Product Name	Natural Latex Rubber Female Condom
Model	Smooth/ Texture
Specification	W49、W52、W53、W55
Width	79.5±2mm
Quantity	1pcs/pack
Main structure	The product consists of a condom, an inner ring, and lubricant. The condom is made of natural rubber latex, forming a thin-film sleeve structure. The open end features a rolled edge serving as the outer ring, designed to secure the condom opening to the external genitalia. A polyurethane inner ring is integrated at the closed end (tip) of the condom to facilitate expansion and maintain structural integrity. The lubricant is methyl silicone oil or hyaluronic acid.
Scope of application	This product is designed for women to prevent the union of sperm and egg during sexual intercourse, thereby reducing the likelihood of conception. It also aids in lowering the risk of sexually transmitted infections (STIs).

# Latex Household and Industrial Gloves

Imported premium quality natural latex

FDA, CE, ISO Certificate

Wear and off easily

Portable and flexible

Fit to the hand

Whole palm antiskid

Ventilate and comfortable

Durable in use



Dazzle color household gloves

Color	light purple rose red mint green cherry pink
Size	S M L
Weight(g)/pair	45/50/55
Length(mm)	270
Thickness(mm)	0.40
	Size S W:92mm (for reference)
	Size M W:97mm (for reference)
	Size L W:105mm (for reference)

## Give You Protection

With more than 70 years' professional experience, Double One gloves are designed with unique ergonomics, made by refined rubber latex and high-density dipping technology, with characteristics of comfort to wear, steadiness of grabbing, better flexible and durable.




"A" type household gloves

Color	Yellow Red Pink Green
Size	S/M/L
Weight(g)/pair	58/62/65
Length(mm)	290
Thickness(mm)	0.40
	Size S W:92mm (for reference)
	Size M W:97mm (for reference)
	Size L W:105mm (for reference)




Latex Industrial Gloves

Color	Black
Size	S/M/L/XL
Weight(g)/pair	81/88/95/105
Length(mm)	300/310/320/330
Thickness(mm)	0.50
	Size S W:90mm (for reference)
	Size M W:101mm (for reference)
	Size L W:107mm (for reference)
	Size XL W:113mm (for reference)



Thin household gloves

Color	Rose Red
Size	S/M/L
Weight(g)/pair	40/44/48
Length(mm)	290
Thickness(mm)	0.35
	Size S W:92mm (for reference)
	Size M W:97mm (for reference)
	Size L W:105mm (for reference)

# Latex Industrial Gloves



Double color industrial gloves

Color	Double Color
Size	S/M/L
Weight(g)/pair	81/88/95
Length(mm)	300/310/320
Thickness(mm)	0.50
	Size S W:90mm (for reference)
	Size M W:101mm (for reference)
	Size L W:107mm (for reference)



Natural color industrial gloves

Color	Natural
Size	S/M/L
Weight(g)/pair	87/97/105
Length(mm)	300/310/320
Thickness(mm)	0.50
	Size S W:90mm (for reference)
	Size M W:101mm (for reference)
	Size L W:107mm (for reference)



Butyl rubber gloves with nylon lining

Color	Green
Size	S/M/L
Weight(g)/pair	110/120/130
Length(mm)	290
Thickness(mm)	0.60
	Size S W:96mm (for reference)
	Size M W:104mm (for reference)
	Size L W:112mm (for reference)