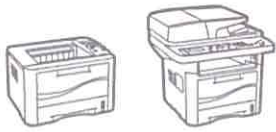


Xerox® Phaser® 3320
and Xerox® WorkCentre™
3315/3325

A4

Black and white Printer
and Multifunction Printer



Phaser 3320 Printer and WorkCentre 3315/3325 Multifunction Printer

Compact, high performance,
outstanding value.



Xerox® Phaser® 3320 Printer and Xerox® WorkCentre™ 3315/3325 Multifunction Printer

Superior desktop productivity with the latest office technology advantages.

The convenient, value-packed Phaser 3320 Printer and WorkCentre 3315/3325 Multifunction Printer deliver reliable, economical performance where you need it, helping you stay focused on what matters most: growing your business.

Get more pages!

Print longer right out of the box. The Phaser 3320 and WorkCentre 3325 come with a standard toner cartridge that yields up to 5,000¹ pages.

Do More for Less

- **More efficient input.** A Duplex Automatic Document Feeder (DADF) comes standard with the WorkCentre 3325, making faster work of two-sided scan, copy and fax jobs.
- **Standard duplexing.** Highly efficient, no-hassle two-sided printing can cut your paper consumption and cost in half.

Engineered to Perform, Built to Last

- **Outstanding performance.** A fast print speed of up to 35 ppm and a first-page-out time as fast as 6.5 seconds.
- **Print more for longer.** An optional second paper tray lets you load an extra 520 sheets at one time for extended interruption-free printing.
- **See the difference.** Your documents show exceptional sharpness with up to 1200 x 1200 image quality.
- **Reliable endurance.** Advanced engineering aimed to meet the production requirements of workteams means consistent performance and minimum disruptions. A standard one-year on-site warranty gives you added peace of mind.

An Easy Fit

- **Go wireless².** The Phaser 3320 and WorkCentre 3325 come standard with internal Wi-Fi connectivity, giving you the freedom to put the device right where you need it.
- **Stay secure.** With the latest security features, including IPsec, SNMPv3, IP filtering and secure print.
- **Productivity where you need it.** A small footprint, which allows for easy integration within your work space.
- **Economical efficiency.** Available high-capacity print cartridges reduce your total cost of ownership and demand less frequent replacement.
- **Easy management.** With Xerox® CentreWare® IS, remote device administration is handled with ease right from your computer's browser.

¹ Average standard pages. Declared Yield in accordance with ISO/IEC19752. Yield will vary based on image, area coverage and print mode.

² 3320V_DNI and 3325V_DNI

WorkCentre 3315/3325 Quick Facts

- Print up to 31/35 ppm
- First-page-out time as fast as 6.5 seconds
- Built-in Wi-Fi connectivity (WorkCentre 3325* only)
- 50-sheet (Duplex) Automatic Document Feeder (WorkCentre 3325 only)
- Standard 250-sheet paper capacity
- 50-sheet Bypass Tray
- 600 MHz processor (WorkCentre 3315: 360 MHz)
- Up to 1200 x 1200 image quality

WorkCentre 3315
WxDxH:
424 x 422 x 417 mm
Weight:
14.4 kg

WorkCentre 3325
WxDxH:
469 x 458 x 447 mm
Weight:
16.6 kg



Copy / Print / Scan / Fax / Email

A4

31 ppm (3315)
35 ppm (3325)

Phaser 3320 Quick Facts

- Print up to 35 ppm
- First-page-out time as fast as 6.5 seconds
- Built-in Wi-Fi connectivity*
- Standard 250-sheet paper capacity
- 50-sheet Bypass Tray
- 600 MHz processor
- Up to 1200 x 1200 image quality

Phaser 3320
WxDxH:
366 x 368 x 257 mm
Weight:
9.9 kg



Print

A4

35 ppm

* 3320V_DNI and 3325V_DNI

Multiple functions, minimal footprint. The Xerox® WorkCentre 3315/3325 Multifunction Printer offers outstanding print performance, plus a host of powerful productivity tools designed to make your daily office tasks more efficient than ever.



1 A 50-sheet automatic document feeder handles media sizes from 142 x 148 mm to 216 x 356 mm. Upgrade to the WorkCentre 3325 Multifunction Printer's 50-sheet DADF and get the extra ability to scan, copy, fax and email two-sided originals.

2 Powerful colour scanning capabilities include scan to email, network scanning (WorkCentre 3325 only), scan to folder and scan to USB memory device.

3 A large, brightly illuminated front panel with easy-access buttons and help screens to streamline operations.

4 Standard copy features include ID Card Copy, N-up, photo mode and more.

5 Packed with the latest fax capabilities at a speed of 33.6 Kbps and MH/MR/MMR/JBIG/JPEG compression.

6 A front-side USB port allows users to quickly print from or scan to any standard USB memory device.

7 150-sheet output tray.

8 Adjustable 50-sheet bypass input tray accepts custom media sizes from 76 x 127 mm to 216 x 356 mm

9 250-sheet input tray accepts custom media sizes from 76 x 127 mm to 216 x 356 mm

10 Choose an additional 520-sheet paper tray and increase total capacity to 820 sheets.

11 A standard 600 MHz processor and 256 MB memory (expandable to 768 MB) easily handle a heavy workload (WorkCentre 3325 only).

	Phaser® 3320	WorkCentre™ 3315	WorkCentre 3325
Speed	Up to 35 ppm	Up to 31 ppm	Up to 35 ppm
Duty Cycle	Up to 80,000 pages / month ¹	Up to 50,000 pages / month ¹	Up to 80,000 pages / month ¹
Paper Handling			
Paper Input	Standard	Automatic Document Feeder (ADF): 50 sheets: Custom Sizes: 142 x 148 mm to 216 x 356 mm	Duplex Automatic Document Feeder (DADF): 50 sheets: Custom Sizes: 142 x 148 mm to 216 x 356 mm
	Optional	Bypass Tray: 50 sheets; Custom sizes: 76 x 127 mm to 216 x 356 mm	
		Tray 1: 250 sheets; Custom sizes: 105 x 148 mm to 216 x 356 mm	
		Additional Tray: 520 sheets; Custom sizes: 148 x 210 mm to 216 x 356 mm	
Paper Output	150 sheets		
Automatic Two-Sided Printing	Standard		
Print			
First-Page-Out Time	As fast as 6.5 seconds		
Print Resolution (max)	Up to 600 x 600 dpi (1200 x 1200 image quality)		
Processor	600 MHz	360 MHz	600 MHz
Memory (std / max)	128 MB / 384 MB		256 MB / 768 MB
Local Drive	NA	NA	2 GB
Connectivity	USB 2.0, 10/100/1000Base-T Ethernet, Wi-Fi ²	USB 2.0, 10/100Base-T Ethernet	USB 2.0, 10/100/1000Base-T Ethernet, Wi-Fi ²
Page Description Languages	PCL® 5e and 6 emulations, PostScript® 3™ emulation	PCL® 5e and 6 emulations, PostScript® 3™ emulation, PDF emulation	PCL® 5e and 6 emulations, PostScript® 3™ emulation, PDF emulation, XPS®
Print Features	Watermarks, Collation, Auto 2-sided prints, N-up, Poster, Booklet print, Custom page size, Fit to page, Scaling, Toner Save mode, Earth Smart mode, Print from USB ³ , Job scheduling ⁴ , Print from local drive ⁴ , Save ⁵ , Save and Print ⁴		
Copy			
First-Page-Out Time		As fast as 12 seconds	As fast as 10 seconds
Copy Resolution (max)		Up to 600 x 600 dpi	
Copy Features	NA	Automatic background suppression, Darkness control, ID Card Copy, Margin shift, N-up, Job build, Photo mode, Programme Ahead	Automatic background suppression, Darkness control, ID Card Copy, Margin shift, Booklet creation, Book copying with centre erase, Edge erase, N-up, Job interrupt, Job build, Photo mode, Programme Ahead, Poster copying
Fax			
Fax Features ⁵	NA	33.6 Kbps with MH/MR/MMR/JBIG/JPEG compression, Address book (up to 200 speed dials, 209 group dials), Resolution up to 300 x 300 dpi, Auto redial, Auto reduction, Colour Fax Send, Delayed Send, Fax Forward to Email/Fax, Junk fax protection, Memory Receive, PC Fax (Windows only), Secure Fax	
Scan			
Scan Destinations	NA	Scan to Email, USB, Local PC, Network PC	Scan to Email, USB, Folder, FTP, SMB, Local PC, Network PC, Local Drive
Scan Features		Up to 4800 x 4800 dpi resolution, 24-bit colour / 8-bit greyscale, PDF / JPEG / TIFF (single and multipage), Xerox® Scan to PC Desktop® Personal Edition	
Security			
	Secure HTTPS (SSL), IPsec, Secure LDAP (WorkCentre 3315), 802.1X, SNMPv3, IP Filtering, Secure Print (WorkCentre 3315 with optional 256 MB Memory upgrade), Mac Address Filtering		Secure HTTPS (SSL), IPsec, Secure LDAP, 802.1X, Network Authentication, SNMPv3, IP Filtering, Secure Print, Image Overwrite, Mac Address Filtering
Warranty	One-year on-site warranty		

¹ Maximum volume capacity expected in any one month. Not expected to be sustained on a regular basis. ² 3320V_DNI and 3325V_DNI. ³ WorkCentre 3315 and 3325 only. ⁴ WorkCentre 3325 only. ⁵ Requires analogue phone line.

Device Management

CentreWare® Internet Services, CentreWare Web, Email alerts, Apple® Bonjour

Print Drivers

Windows® XP and later, OS® X 10.5 and later, various Linux® and Unix distributors, Xerox® Global Print Driver®, Xerox® Mobile Express Driver®

Media Handling

Automatic Document Feeder (3315): 60–105 gsm; Duplex Automatic Document Feeder (3325): 50–105 gsm; Bypass Tray: 60–220 gsm; Tray 1: 60–163 gsm; Media types: Plain paper, envelopes, labels, transparencies, card stock, recycled

Operating Environment

Temperature: Storage: 0° to 40° C; Operating: 10° to 32° C; Humidity: Operating: 20% to 80%; Sound pressure levels: 3320: Printing: 52 dB(A), Standby: 26 dB(A); 3315: Printing/copying: 52 dB(A), Standby: 26 dB(A); 3325: Printing/copying 53 dB(A), Standby 26 dB(A); Warm-up time (from sleep mode): as fast as 35 seconds

Electrical

Power: 220–240 VAC, 50/60 Hz, 3.3A Power Consumption: 3320: Standby: 48 W, Printing: 420 W, Sleep: 10 W; 3315/3325: Standby: 50 W, Printing: 600 W, Sleep: 8 W; ENERGY STAR® qualified

Certifications

FCC Part 15, Class B, FCC Part 68, UL 60950-1/CSA 60950-1-07, 2nd Edition, CE Mark applicable to Low Voltage Directive (2006/95/EC), EMC Directive (2004/108/EC), and R&TTE Directive (1999/5/EC), GOST, NOM, GS Mark, Citrix Ready, Section 508 (compliant with minor exceptions), Blue Angel (does not include WorkCentre 3315), ENERGY STAR® qualified

Supplies

High-Capacity Print Cartridges:	
3320: 11,000 std. pages*	106R02307
3325: 11,000 std. pages*	106R02313
3315: 5,000 std. pages*	106R02311
Standard-Capacity Print Cartridges:	
3320: 5,000 std. pages*	106R02305
3325: 5,000 std. pages*	106R02311
3315: 2,300 std. pages*	106R02309
Initial Included Cartridges:	
3320 & 3325: 5,000 std. pages*	
3315: 2,300 std. pages*	

Options

Additional 520-sheet Paper Tray	497N01412
256 MB Memory (Phaser 3320 & WorkCentre 3315)	098N02189
512 MB Memory (WorkCentre 3325)	097N01878

* Average standard pages. Declared Yield in accordance with ISO/IEC 19752. Yield will vary based on image, area coverage and print mode.



(Does not include WorkCentre 3315)

For more information, visit us at www.xerox.com/office

©2014 Xerox Corporation. All rights reserved. Xerox®, Xerox and Design®, CentreWare®, Phaser® and WorkCentre™ are trademarks of Xerox Corporation in the United States and/or other countries. As an ENERGY STAR® partner, Xerox Corporation has determined that this product meets the ENERGY STAR guidelines for energy efficiency. ENERGY STAR and the ENERGY STAR mark are registered U.S. marks. The information in this brochure is subject to change without notice. Updated 1/14

332BR-01EB



Phaser® 3300MFP

Black and white multifunction printer



		Phaser 3300MFP
Speed		Up to 28 ppm (A4)
Duty Cycle		Up to 25,000 pages/month
Paper Handling	Paper Input	Standard Automatic Document Feeder: 50 sheets; Custom Sizes: 142 x 148 mm to 216 x 356 mm
		Multipurpose Tray: 50 sheets; Custom sizes: 76 x 127 mm to 216 x 356 mm
	Optional	Main Tray: 250 sheets; Sizes: A4, A5, A6
		Additional Tray: 250 sheets; Sizes: A4, A5, A6
Paper output		150 sheets face down, 1 sheet face up
Automatic two-sided printing		Standard
Print		
First-page-out time		As fast as 8.5 seconds
Print resolution		600 x 600 ppp, up to 1200 x 1200 enhanced image quality
Memory (std/max)		96 MB (64 MB + 32 MB DIMM) / 320 MB maximum
Processor		300 MHz
Language support		PCL® 6 / 5e emulations, PostScript® 3™ compatibility
Connectivity		USB 2.0, 10/100Base-TX Ethernet
Print features		Watermarks, Toner save mode, N-up, Saved settings, Fit to page, Collation, Overlay, Reduce/enlarge, Poster, Scaling, Print from USB, Booklet printing
Copy		
First-page-out time		As fast as 8.5 seconds
Copy resolution		Up to 600 x 600 dpi
Copy features		Reduce/enlarge, Two-sided (2:1 duplex copy), Background suppression, Collation, ID Card Copy, 2-up/4-up, Cloning, Poster
Fax		
		33.6 Kbps with MH/MR/MMR/JBIG/JPEG compression
Fax features		Colour fax send, Searchable address book, Fax reports, Forward to fax/email, PC and LAN Fax (send only), Secure fax receive, Last number redial, Distinctive ring, Journal, Junk fax barrier, up to 200 group dial locations, Broadcast fax (up to 249 locations), Delayed fax send, Memory receive, Auto file size reduction, 6 MB fax memory
Scan		
Scan destinations		Scan to Email (includes up to 200 local directory entries, 50 group email entries, authentication); Network Scanning (Windows only) via SMB and FTP; Scan to USB Memory Drive (File formats: BMP, JPG, Multipage PDF, Multipage TIFF); Direct Scan to Applications including OCR (software included)
Scan features		Up to 4800 x 4800 dpi (enhanced), File formats: BMP, JPG, Multipage PDF, Multipage TIFF; Scan to PC Desktop® Personal Edition (Includes 1 seat of Nuance® PaperPort® SE 11.0, OmniPage® 4.0 SE, Image Retriever), Colour Scanning, FTP, SMB, SMTP and HTTP(S), Scan Build Job
Security		802.1x, SNMPv3, HTTPS, Secure Fax, SSL, IP Filtering, Scan to Email with user authentication
Warranty		One-year warranty, plus optional service extensions available

Device Management

CentreWare® Internet Services, CentreWare Web, CentreWare for HP® OpenView, Rendezvous (Bonjour)

Print Drivers

Windows® 2000/XP/Vista/2003 Server, Mac OS® version 8.6-9.2, 10.3-10.5, Various Linux® OS including SUSE™ 8.2-9.2, Red Hat® 8-9, Fedora™ Core 1-4, Mandrake 9.2-10.1, Xerox Mobile Express Driver, Xerox Global Print Driver

Media Handling

Bypass Tray: 60 – 163 gsm
Media types: Plain paper, envelopes, transparencies, labels, card stock, postcards, pre-printed, recycled
Main Tray and Additional Tray (optional): 60 – 90 gsm
Media types: Plain paper
ADF: Weight: 50 to 120 gsm
Media types: Plain paper

Operating Environment

Operating: 10° to 32° C
Relative humidity: 20 to 80 %
Sound pressure levels:
Printing: 55 dB(A)
Standby: 39 dB(A)
Warm-up time (from sleep mode):
Less than 20 seconds

Electrical

Power: 220–240 VAC, 50/60 Hz
Power consumption: Standby: 79 W
Printing: 478 W
Power save: 10 W
ENERGY STAR® qualified

Dimensions (WxDxH)

466 x 435 x 458 mm
Weight: 18.9 kg
Package Dimensions (WxDxH):
590 x 559 x 640 mm
Optional 250-sheet Tray 2:
466 x 434 x 85 mm
Weight: 3.1 kg

Certifications

Listed UL 60950, CE Mark applicable to Directives 2006/95/EC, 2004/108/EC and 99/5/EC, FCC Part 15 Class B, FCC Part 68

What Comes In The Box

- Phaser 3300MFP Multifunction Printer
- Print Cartridge (4,000 print capacity¹)
- Software and Documentation CDs (with Print Drivers, Scanning Software, User Manual, Quick Installation Guide, Warranty Statement and Registration Card)
- Power cord, USB cable, fax cord

Supplies

Standard-Capacity Print Cartridge¹:
4,000 std. pages 106R01411
High-Capacity Print Cartridge¹:
8,000 std. pages 106R01412

1 Average standard pages. Declared Yield in accordance with ISO/IEC 19752. Yield will vary based on image, area coverage and print mode.

Options

250-sheet Tray 097N01693
256 MB Phaser Memory 097S03761

Supplies Recycling Programme

Consumables for the Phaser 3300MFP are part of the Xerox Green World Alliance Supplies Recycling Programme. For more information, please visit the Green World Alliance website at www.xerox.com/gwa



For more information, visit us at www.xerox.com

Copyright © 2008 Xerox Corporation. All rights reserved. Contents of this publication may not be reproduced in any form without permission of Xerox Corporation. XEROX®, CentreWare®, Phaser® and the Sphere of Connectivity design are trademarks of Xerox Corporation in the U.S. and/or other countries. Adobe® and PostScript® 3™ are registered trademarks or trademarks of Adobe Systems, Incorporated. PCL® is a registered trademark of Hewlett Packard. As an ENERGY STAR® partner, Xerox Corporation has determined that this product meets the ENERGY STAR guidelines for energy efficiency. ENERGY STAR and the ENERGY STAR mark are registered U.S. marks. All other trademarks are the property of their respective manufacturers. The information in this brochure is subject to change without notice. 9/08 3308R 0118



WorkCentre®
5325 / 5330 / 5335
Tabloid-size
Black-and-white
Multifunction Printer



Xerox® WorkCentre®
5325 / 5330 / 5335
Multifunction Printer
Optimized office efficiency



WorkCentre® 5325 / 5330 / 5335 Multifunction Printer

The highly modular WorkCentre 5300 series multifunction printer gives today's fast-paced office environments a critical productivity advantage. The tasks you perform daily become more efficient, while intensive workplace processes are optimized with customizable workflow solutions that easily handle your unique business requirements.

Reduce costs with superior workgroup efficiency

With exceptional copier performance and the option of adding powerful printing, scanning and faxing, the WorkCentre 5300 series is built to perform as a consistently high level. Plus, multiple levels of cost-control capabilities let you easily manage expenses by limiting, tracking and assigning costs.

- **Faster results.** Print and copy speeds of up to 35 ppm keep pace with even the busiest environments.
- **Automated workflows.** Save time and increase efficiency with convenient features that automate routine tasks. For example, Fax Forward to Email automatically sends your incoming faxes from the device directly to your computer's email in-box.
- **Powerful scanning.** Improve the way you work with a host of scanning features, such as Scan to Folder¹, Network Scanning¹, Scan to Text-searchable PDF¹, and standard color scanning. Convert hard copies into digital files for automatic routing and archiving. Preview scans and documents stored on the device right on the color touch screen, and you can access documents faster with advanced file compression that dramatically shrinks file sizes.
- **Walk-up simplicity.** Scan to/print from USB functionality lets you print from and scan to a USB memory device for faster document delivery when you're not at your computer.
- **Limit and track usage.** With Xerox Standard Accounting, administrators can set limits for individual users on the number of print, copy, scan, and fax jobs, and account for device activity at the user, group or department level.
- **Experience true multitasking.** The WorkCentre 5300 series lets users perform five tasks at once: RIP, receive, program ahead, process the queue, and transmit. This advanced capability lets you copy, print, scan or fax even while other jobs are running.

Total peace of mind

The WorkCentre 5300 series features state-of-the-art technologies for optimized security at the device and on the network.

- **Keep your documents safe at all times.** With Secure Print, jobs are stored in a separate queue until the intended recipient chooses which jobs to release for printing. Plus, users can convert hard copies to secure digital files with the Scan to Password-protected PDF feature.
- **Prevent unauthorized access.** Powerful features such as standard network authentication², with available technologies like Secure Access Unified ID System[®] and Common Access Card Enablement Kit, ensure only authorized users can access the device.
- **Maintain information integrity.** 256-bit hard disk encryption and overwrite uses the FIPS 140-2 standard to ensure your data stays secure.
- **Stay secure.** Sensitive data stays private over your network thanks to network authentication and encrypted email, plus built-in support for IPsec, 802.1X and SNMPv3.0 — the latest security protocols.

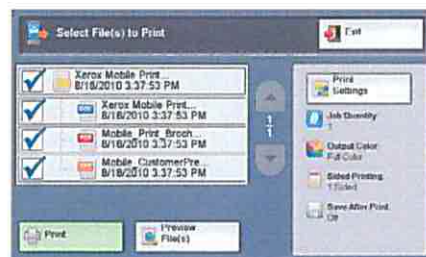
The right fit for every environment

The space-saving WorkCentre 5300 series benefits your office and the outside world, with cutting-edge engineering that delivers big reductions in energy consumption.

- **Smaller footprint.** Save valuable office space with a device that's just the right fit.
- **Quiet operation.** The WorkCentre 5300 produces less noise, letting you keep the device close by for distraction-free convenience.
- **Xerox technology advantages.** Our EA Toner with low-melt technology achieves minimum fusing temperature at 68 degrees F (20 degrees C) less than conventional toner. Plus, our LED scanner consumes just one-third the power of traditional Xenon lamps. You get significant energy savings and brilliant, glossy output — even on ordinary paper.
- **Standard duplexing.** The WorkCentre 5300 series comes with standard two-sided printing, helping you save paper and money.
- **ENERGY STAR[®] qualified.** The WorkCentre 5300 series meets the stringent ENERGY STAR requirements for energy usage.

¹ With Network Scan Kit; ² Copier/printer/scanner only.

Xerox[®] Workflow Solutions take your WorkCentre 5300 series multifunction printer to a higher level of office optimization.



Xerox[®] Mobile Print Solution is just one of many personalized solutions you access right from the touch screen interface.

Transform the way your organization gets vital work done with the power of Xerox Workflow Solutions. When people work efficiently, in less time and with fewer steps, productivity goes up. Stress goes down. So do errors. Whether you have only a few people on your team or a very large workgroup, Xerox knows it's about streamlining your workflow — and it starts by using Xerox[®] Workflow Solutions right from your WorkCentre 5300 series device.

Xerox[®] Mobile Print Solution

With Xerox, being mobile has never been easier. Xerox makes mobile printing simpler and more convenient, while keeping your business secure. That's why we're empowering today's mobile professionals with the freedom to send print jobs from any email-enabled device.



1 The innovative touch screen on the WorkCentre 5300 series front panel makes walk-up operation easy as can be. It features a 7-inch full-color display with bright icons and intuitive navigation for optimal ease-of-use.



2 Front-panel USB port makes it fast and easy to print from or scan to any standard USB memory device.

3 110-sheet Duplex Automatic Document Feeder (DADF) quickly processes single- or double-sided originals.

4 50-sheet bypass tray for specialty media and custom sizes.

5 The optional 2,000-sheet High Capacity Feeder* brings maximum paper capacity to 5,090 sheets.

6 Standard paper Input includes your choice of two 520-sheet trays with a stand or a 2000-sheet High Capacity Tandem Tray.



7 Space-saving Integrated Office Finisher with convenient single-position stapling.

8 Office Finisher LX adds 2,000-sheet stacking, multi-position stapling and optional booklet maker.



Flexibility with room to grow

Choose a powerful tabloid-size copier and add printing, scanning and faxing capabilities to optimize your workgroup's productivity. As your work volume increases, the WorkCentre 5300 series is ready to expand to meet your business needs.

WorkCentre® 5300 Series Quick Facts

- Print and copy at up to 35 ppm
- Powerful scan and fax solutions
- Print up to 11 x 17 in. / A3
- Up to 1200 x 1200 dpi print resolution
- Max paper capacity: 5,090 sheets
- Best-in-class security — Full System Common Criteria Certified (ISO 15408)
- Xerox® Workflow Solutions built on the Xerox Extensible Interface Platform® (EIP)



WxDxH:
23.5 x 25.1 x 43.9 in.
597 x 637.5 x 1,115 mm



WorkCentre 5335 with High-Capacity Tandem Tray

* Requires High-Capacity Tandem Tray

WorkCentre® 5325 / 5330 / 5335



	WorkCentre 5325 / 5330 / 5335 Copier		WorkCentre 5325 / 5330 / 5335 Copier/Printer/Scanner
Speed	Up to 25 / 30 / 35 ppm		
Duty Cycle	100,000 / 125,000 / 150,000 pages per month		
Memory	1 GB plus 160 GB hard drive		1 GB plus 160 GB hard drive / 2 GB with optional PostScript Kit
Paper Handling Paper Input	Standard	Duplex Automatic Document Feeder: 110 sheets; Standard sizes: 5.5 x 8.5 in. to 11 x 17 in. / A5 to A3; Custom sizes: 3.3 x 4.9 in. to 11.7 x 17 in. / 85 x 125 mm to 297 x 432 mm	
	Choose one	Bypass Tray: 50 sheets; Custom sizes: 3.5 x 3.9 in. to 11.7 x 17 in. / 89 x 98 mm to 297 x 432 mm	
	Optional	Trays 1 and 2 with Stand: 520 sheets each; Sizes: Custom sizes: 5.5 x 7.2 in. to 11.7 x 17 in. / 140 x 182 mm to 297 x 432 mm	
		High-Capacity Tandem Tray: 2,000 sheets; Standard Sizes: 8.5 x 11 in. and 7.25 x 10.5 in. / A4 or B5	
Paper output	Standard	Dual Catch Tray: 250-sheets each; Lower output offset	
	Optional	Integrated Office Finisher: 500-sheet stacker, 50 sheets stapled, single-position stapling	
		Office Finisher LX: 2,000-sheet stacker, 50 sheets stapled, 3-position stapling, optional hole-punch, optional booklet maker (score, saddle stitch)	
		Convenience Stapler: Staples 50 sheets	
Automatic two-sided printing	Standard		
Copy	First-page-out-time	WorkCentre 5325/5330: As fast as 4.2 seconds; WorkCentre 5335: As fast as 4.0 seconds	
Resolution (max)	600 x 600 dpi		
Copy features	Automatic two-sided, Electronic pre-collation, Automatic tray selection, Build Job, Negative/Mirror image, Automatic booklet creation, Multi-up, Auto RE, Mixed-size originals, Covers insertion, Sample set, Book copying, Annotation, Delete Outside/Delete Inside, Poster mode, Watermarks, ID Card Copy, Page Layout, Form Overlay, Background Suppression		
Print	First-page-out-time	Optional	As fast as 11.0 seconds
	Resolution (max)		1200 x 1200 dpi
	Connectivity		10/100/1000Base-TX Ethernet, High-Speed USB 2.0 direct print
	Page description languages		PCL® 5e, PCL 6, HP-GL/HP-GL2, TIFF/PDF, XPS®, Optional Adobe® PostScript® 3™
	Print features		Automatic two-sided, Secure print, Delay print, Sample set, Booklet creation, Cover selection, Paper selection by attribute, N-up, Watermarks, Banner sheets, Fit to new paper size, Output tray selection, Print from USB
Scan	Standard	Optional	PDF, Linearized PDF, PDF/A, TIFF, JFIF, JPEG, XPS, Color Scan, Scan to Email, Scan to Folder
	Optional	Optional	Scan to PC Desktop®, Network Scan Kit (Text Searchable PDF, MRC compression, Thumbnail Preview, Various Xerox® Business Innovation Partner Solutions)
Fax Kit	Optional		Walkup PSTN fax (one-line and three-line options) with Internet fax, Fax over IP (T.38) Kit, Network Server Fax Enablement Kit, Speed Dials (up to 2,000)
	Optional		LAN Fax via driver, Fax Forward, Two-sided Send and Receive, Print on / Fax up to 11 x 17 in. / A3, Fax Build Job
Accounting	Standard	Auditron	Auditron, Xerox® Standard Accounting (Copy, Print, Fax, Scan)
	Optional	NA	Network Accounting Enablement Kit (Various Xerox Business Innovation Partner Solutions)
Security	Standard	256-bit Hard Disk Encryption, Image Overwrite	
	Optional	NA	Secure Print, Authentication with LDAP/Kerberos/SMB/CAC, Password Protected PDF, FIPS 140-2 encryption, S/MIME Encrypted Email, IPsec, 802.1X, SNMP v3.0, Email over SSL, LDAP over SSL, Image Overwrite, 256-bit Hard Disk Encryption, Audit Log
Other Options	Common Access Card Enablement Kit, Foreign Device Interface, Unicode Kit		

* Requires High-Capacity Tandem Tray



For more information, call 1-800-ASK-XEROX or visit us at www.xerox.com/office



©2012 Xerox Corporation. All rights reserved. Contents of this publication may not be reproduced in any form without permission of Xerox Corporation. XEROX® and XEROX and Design® are trademarks of Xerox Corporation in the United States and/or other countries. As an ENERGY STAR® partner, Xerox Corporation has determined that this product meets the ENERGY STAR guidelines for energy efficiency. ENERGY STAR and the ENERGY STAR mark are registered U.S. marks. All other trademarks are the property of their respective manufacturers. The information in this brochure is subject to change without notice. BR146. Updated 6/12 610P730289D W58BR-01UE