

BMI® Medical

Shunting System



BMI® Medical

External Drainage Monitoring System 06128

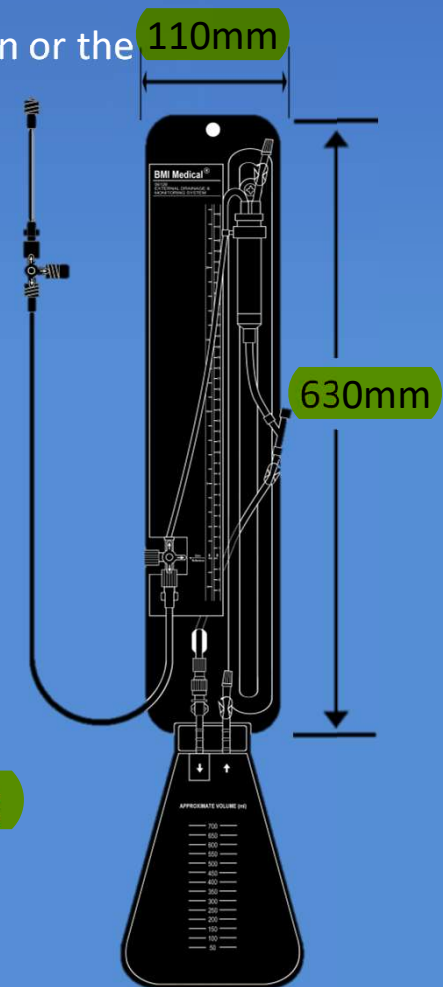
Draining cerebrospinal fluid(CSF) from the lateral ventricles of the brain or the lumbar subarachnoid space.

Monitoring (CSF) pressure and flow rate from the lateral ventricles of the brain or the lumbar subarachnoid space.

Reduce intracranial pressure(ICP)

Features

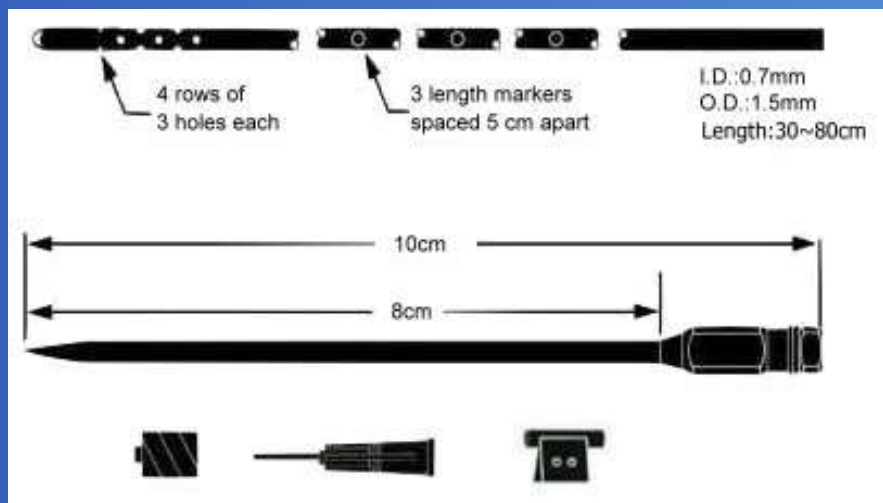
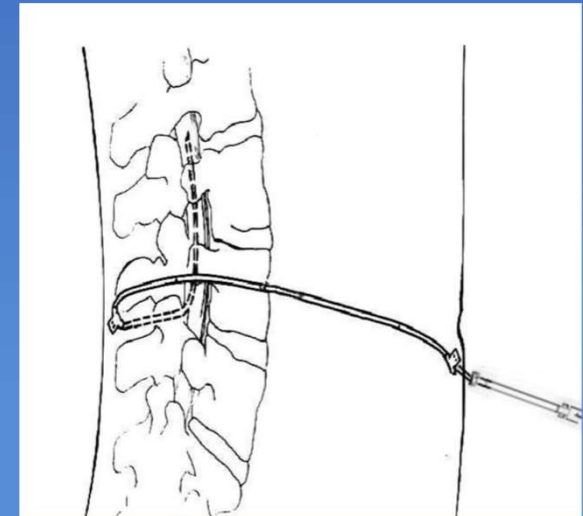
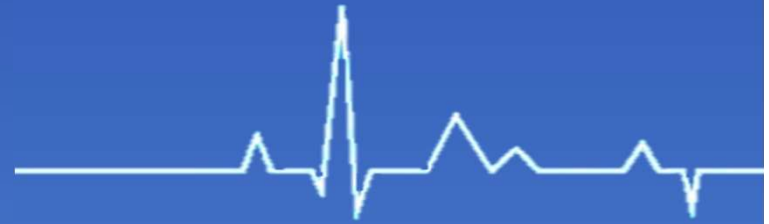
1. **Hydrophobic filter** prevents passage of bacteria and eliminates negative pressure artifacts.
2. **Two convenient injection sites** allow sampling and intraventricular medication.
3. Sliding chamber allows accurate flow monitoring
4. **Locking bracket is incorporated in the chamber for quick, accurate pressure head setting.**
5. Large capacity drainage bag (**700ml**) may be disconnected for replacement or emptied for re-use.
6. **Pressure monitoring can be performed at either the mounting panel or patient line port.**
7. **System panel is adjustable by using either the locking cord or mounting bracket.**



BMI® Medical

Lumbar Catheters 06418

Lumboperitoneal Shunt is designed for the diversion of CSF from the lumbar subarachnoid space into the peritoneal cavity using simplified surgical techniques.
Lumbar Catheter, 80 cm, Barium Impregnated.



Included with product

Lumbar Catheter, **Barium Impregnated**

I.D.: 0.7mm

O.D.: 1.5mm

Length: 30~80cm

Tuohy Needle, 14-gauge, 9cm with Huber Tip

1ea. Luer Lock Cap

1ea. Blunt needle

2ea. Fixation tab

BMI® Medical

Wellong Instruments Co., Ltd.

E-mail : cctco@ms35.hinet.net

Phone Number : +886-2-25719829 · +886-2-25413710

Fax Number : +886-2-25627884

Address : 2F., No.63, Linsen N. Rd., Zhongshan Dist.,
Taipei City 104, Taiwan (R.O.C.)