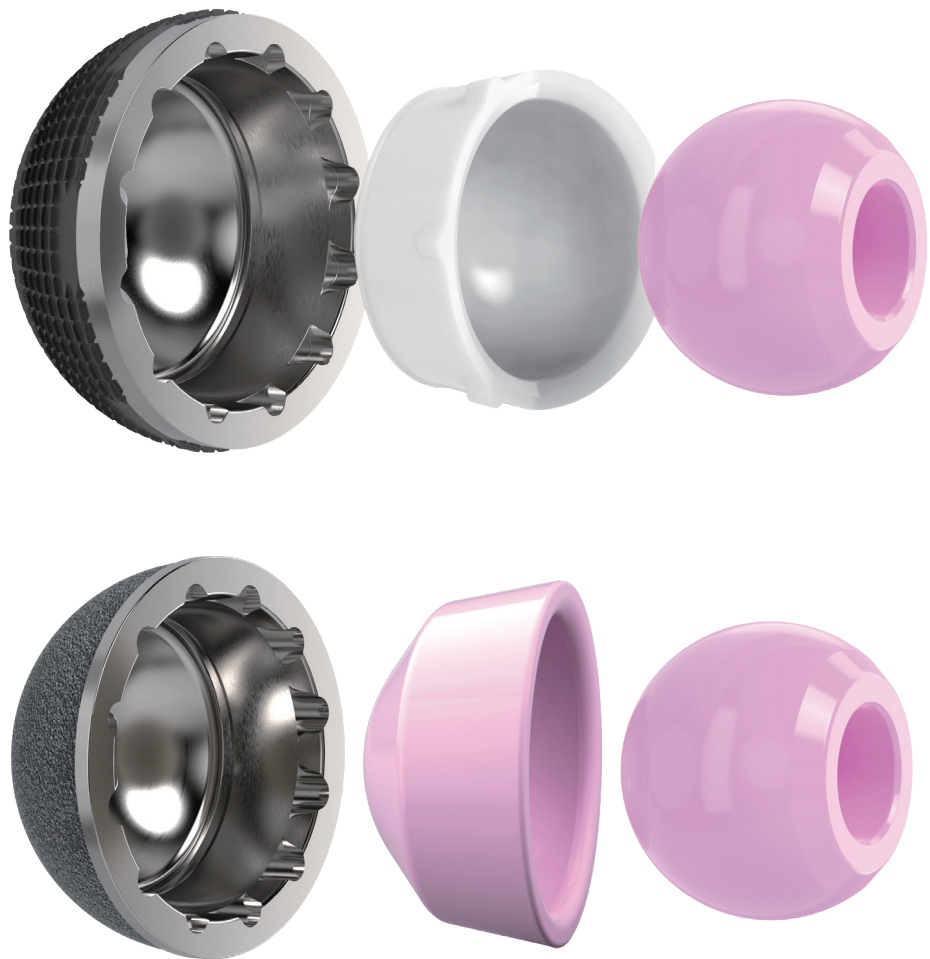


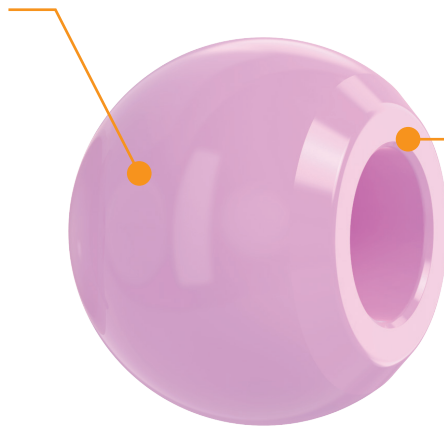
## VarioCup

Ceramic head and insert



## Ceramic head

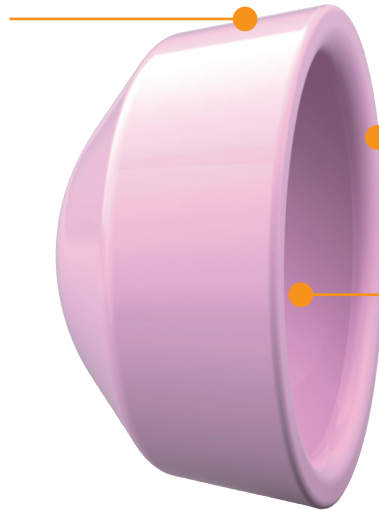
Highly polished articulating surface



Material: high purity alumina matrix with zirconia reinforcement (ISO 6474-2)

## Ceramic insert

Proven taper design works as locking mechanism with acetabular cups



Material: high purity alumina matrix with zirconia reinforcement (ISO 6474-2)

Highly polished articulating surface

### Ceramic Head:

Articulate with Conventional polyethylene or Highly crosslinked polyethylene or Vitamin-E highly crosslinked polyethylene insert.

Articulate with dual mobility bearing made of highly crosslinked polyethylene or Vitamin-E highly crosslinked polyethylene.

28,32,36,40mm head diameter with various offsets.

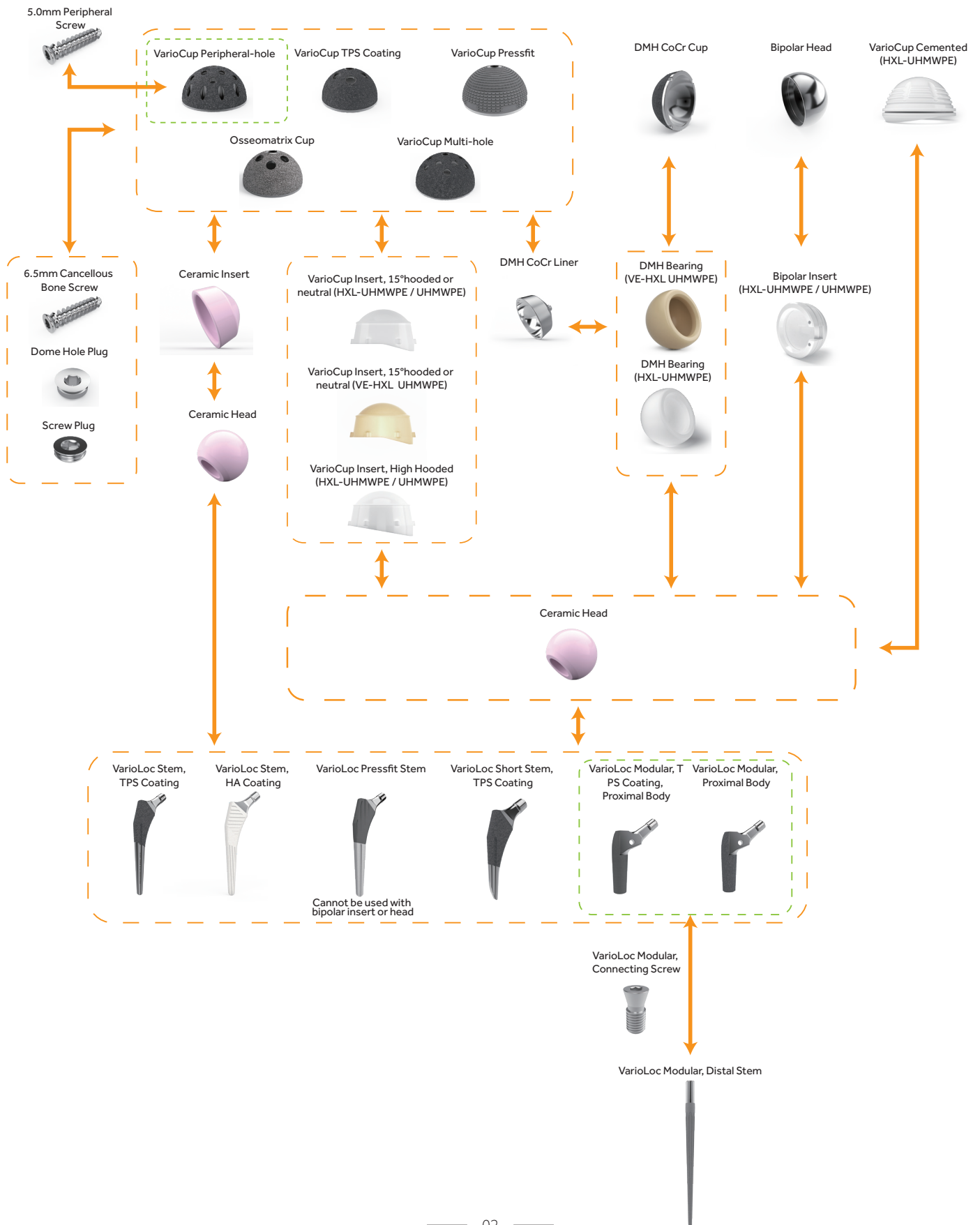
### Ceramic Insert:

28,32,36,40mm Inner diameter mating with acetabular cups from 44-64mm

Low wear rate for ceramic on ceramic bearing surface.

- **State-of-art Design**
- **Enhance ceramic material**
- **Low wear rate for ceramic on ceramic bearing surface**
- **Ceramic head articulates with various polyethylene acetabular inserts and dual mobility bearings**

## Hip Compatability Chart



## Cup Insert Compatibility Chart for 42-68mm Cups

Cup Size in mm	42	44	46	48	50	52	54	56	58	60	62	64	66	68
Cup Size Compatibility	BB	MM	NN	OO	PP	PP	QQ	QQ	RR	RR	SS	SS	TT	TT
VarioCup insert, Neutral or 15° hooded, UHMWPE	22mm ID													
		28mm ID												
				32mm ID										
VarioCup insert, Neutral or 15° hooded, HXL UHMWPE / VE HXL UHMWPE	22mm ID													
		28mm ID												
				32mm ID										
							36mm ID							
Ceramic Insert		28mm ID												
				32mm ID										
							36mm ID							
									40mm ID					

## This image shows a single page of white paper with horizontal blue or grey ruling lines. The lines are evenly spaced and run across the width of the page, leaving small margins at the top and bottom. There is no handwriting or other markings on the paper.