

- EN** Autoclavable resuscitation kits
- F** Valises de réanimation autoclavables
- ES** Kits resucitadores autoclavables
- P** Kits de reanimação autoclaváveis

With case - Silicone resuscitator

Cod. RA141

Adult

Contents:
 1 autoclavable silicone resuscitation bag with valve
 1 silicone resuscitation face mask n°5
 1 reservoir 2700ml
 2 Guedel cannulas n°4/5
 1 oxygen tube
 1 case for transport



Cod. RA142

Children

Contents:
 1 autoclavable silicone resuscitation bag with valve
 1 silicone resuscitation face mask n°3
 1 reservoir 2700ml
 2 Guedel cannulas n°1/2
 1 oxygen tube
 1 case for transport



Cod. RA143

Infant

Contents:
 1 autoclavable silicone resuscitation bag with valve
 1 silicone resuscitation face mask n°1
 1 reservoir 900ml
 2 Guedel cannulas n°000/00
 1 oxygen tube
 1 case for transport



Technical features

Product codes	RA141	RA142	RA143
DIMENSION			
W:	34,8 cm	32 cm	32 cm
D:	15,3 cm	13,7 cm	13,7 cm
H:	13,9 cm	11 cm	11 cm
Capacity	1800 ml	550 ml	320 ml

- EN** Resuscitation bags without mask
- F** Insufflateurs sans masque
- ES** Resucitador sin mascarilla
- P** Balões de reanimação sem máscara



Disposable PVC

Autoclavable silicone 121°C

Cod. RA411

Adult
Valve 60 cm H₂O



Cod. RA401

Adult
Valve 60 cm H₂O



Cod. RA403

Children
Valve 40 cm H₂O



Cod. RA405

Infant
Valve 40 cm H₂O



Technical features

Product codes	RA411	RA401	RA403	RA405
SPECIFICATION				
Capacity	1800 ml	1800 ml	550 ml	320 ml
Material	Disposable PVC		Autoclavable silicone 121°C	

- EN** Oxygen reservoir
- F** Réservoir d'oxygène
- ES** Reservóirio de oxígeno
- P** Reservatório de oxigênio

PVC with valve - Disposable

Cod. RA523

For infant resuscitation bags
With valve



Cod. RA520

For adult and pediatric resuscitation bags
With valve



Technical features

Product codes	RA520	RA523
SPECIFICATION		
Capacity	2700 ml	900 ml

- EN** Resuscitation face masks for resuscitation bags
- F** Masques de réanimation pour insufflateurs
- ES** Mascarillas para reanimación para resucitadores
- P** Máscaras de reanimação para balões de reanimação

121° C Autoclavable silicone resuscitation face masks



Technical features

Product codes	RA430	RA431	RA432	RA433	RA434	RA435
DIMENSION						
Size	0	1	2	3	4	5

Disposable pvc resuscitation face masks air cushion



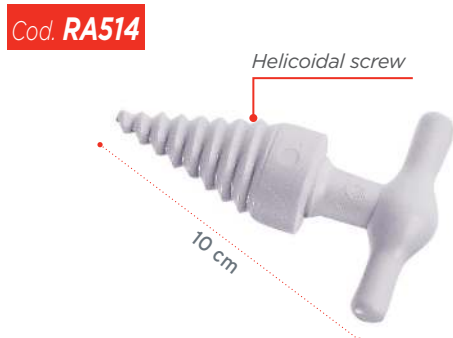
Technical features

Product codes	RA440	RA441	RA442	RA443	RA444	RA445
DIMENSION						
Size	0*	1*	2*	3*	4*	5*

* Colours do not refer to the size of the mask

- EN** Mouth opener
- F** Ouvre-bouche
- ES** Abreboca
- P** Abre-boca

MAUNDER type



- EN** Disposable pocket mask
- F** Masque de poche usage unique
- ES** Mascarilla desechable pocket
- P** Máscara descartável formato de bolso

For mouth to mouth resuscitation



OPERATING LAMP Double Head Version Mounted**Technical Specifications**

- Lamp Features : LED Lamp
 Arm Joint Type : Spring Type Joint Arms
 Classification : Class 1 (MDD 93/42 EEC)
 Product Documents : CE
 Standards : EN 60601-1, EN 60601-2-41
- Digital and Analog models can be set according to customer needs.

**Material Specifications:**

- Lamp Head Material : Static Painted (RAL 9002) Aluminum / Polycarbonate
 Joint Handle Material : Static Painted (RAL 9002) Aluminium
 Sterile Handle Material : Plastic (ABS + PC)

The handle should be sterilized at 134 °C between 3,5-5 minutes and at 121°C during 10 minutes

**OPERATING LAMPS****Description**

Inspital LED operating lights are designed to meet all lighting and viewing requirements of operating theatres. Powerful LED technology with high-tech camera solution helps the surgeons to operate and view the surgery area clearly. Opera LED lights can be adapted in any size of operating theatres including large hybrid types with variety of models & combinations.

Feature

- 60 LED modules of the INSPITAL operating lights can be replaced individually
- INSPITAL design and replaced specially to get rid of shadows in the surgical room
- The doctors can discriminate the true colour of the system with INSPITAL operating lamps
- The lifespan of the operating lights is very long because of LED technology



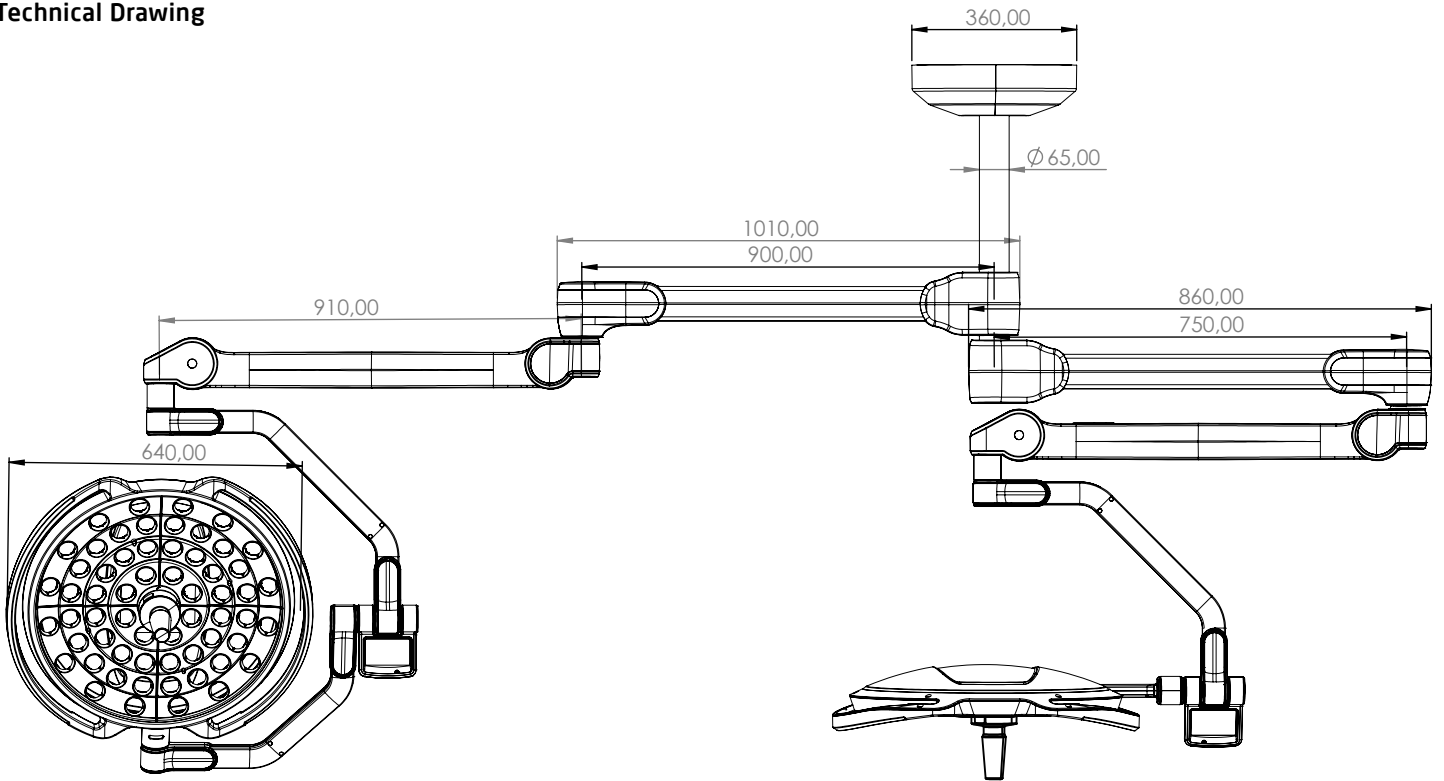
- The severity of the lamps can be set it's max. value by one touch
- The colour of the lamps are in 3000K and 5000K can be change by 250 K sensitivity
- Lamps height from the operating table is in between 90mm - 110mm , where the lux of lamps can be menagable
- Height of the Lamp could be set automatically or manually
- Thanks to auto light feature system does not loose any lux with blocking 1 portion out of 4
- System automatically can close the 1/4 of the its lambs to protect doctors head from heat that comes out of the lambs
- With the special head design of the lamps, the medical flow stays laminar
- The operating time of the lamps can be tracked easily from the touchpad of the system
- Laser choice could be used to see the center operation lights which will take approxiamtely 20 seconds
- 19" and 24" sized monitors are can beon the line with according the customer's request
- Even with changing diameter of the loperating lamps the lux loss is not an option with auto-light feature
- Endoscopy feature
- Additional camera with its adjustable zoom feature
- External battery can be added
- Because of the LED technology of the system , No harmful materials are produced, so lamps have a good relationship with our health
- Environmental friendly (No harmful UV rays)



TECHNICAL SPECIFICATIONS

Diameter of lighthead	Ø670 mm
Illumination power, at 1 m	160.000 Lux
Color temperature	3000 K - 5000 K
Color rendering index, Ra CRI	96%
Dimming Range	% 1-100
Light Field Diameter d10	24 - 36 cm/9.5"-14.2"
Light Field Diameter d50	13 - 28 cm/5.1"-11"
Number of LED modules	60
Lifetime of LED	>60.000 h
IP	IP 54
Total power consumption	130 W
Degree of turbulence(standard value 37.5% max.)	30%
Irradiance at nominal illuminance	200 W/m ²
UV radiation intensity	0,2 W/m ²
Depth of the volume of light L1 + L2 at 20%	130 cm /51.2"
Input Voltage	220-240 VAC / 50-60 Hz
Depth of Lightning (L1+L2) at 60%	76 cm/30"
Additional options	Touch Screen Pro Control Unit, Camera, Monitor, Battery Back Up

Technical Drawing



- Units are in "mm"

- EN** Surgical suction unit
- F** Aspirateurs chirurgicaux
- ES** Aspiradores de secreciones
- P** Aspiradores de secreções

Portable



Cod. LTA260 *Aspimed 2.2*
16 l/minute

Cod. LTA270 *Aspimed 2.3*
40 l/minute



ACCESSORIES INCLUDED

- 1 Jar with lid and anti-overflow float
- 1 tube connector
- 1 silicone sterilized tube
- 1 antibacterial filter
- 1 sterile Suction probe
- 1 feeding cable

Suitable for home and hospital use.

Spare parts



- Cod. LRA372**
1000cc complete jar
- Cod. LRA204***
Spare antibacterial filter
**Shape may change depending on availability*
- Cod. LRA120**
Ø6/10mm
- Cod. LRA110**
CH14 - without control
Cod. LRA112
CH14 - with control
Cod. LRA116
CH16 - without control
Suction catheter
- Cod. LRA100**
Fingertip sterile valve for suction regulation

Technical features

Product codes	LTA260	LTA270	Use	continuous	
REFERENCES			Max. suction	16 l/min	40 l/min
Class. EN ISO 10079-1	high vacuum low flow	high vacuum high flow	Max. suction	-0,75 bar	-0,80 bar
TECHNICAL SPECIFICATION					
Power supply	230V / 50 Hz		WEIGHT AND DIMENSION		
Motor	Piston pump		W:	D:	H:
Power consumption	184 VA	110 VA	36 cm	19 cm	21 cm
					2,5 kg LTA260 3,6 kg LTA270

- EN** Battery suction units
- F** Aspirateur chirurgique à batterie
- ES** Aspirador de secreciones con batería
- P** Aspirador de secreções com bateria

Cod. LTA420 Rechargeable battery and power supply

Aspimed 1.9

CE
0051



ACCESSORIES INCLUDED

- 1 1000cc autoclavable polycarbonate tank with antioverflow valve
- 1 1000cc disposable jar
- 2 99% hydrophobic antibacterial filters
- 1 disposable sterile cannula
- 1 sterile manual flow regulator, disposable
- 1 silicone tubes set (they can be sterilized)
- 1 multi voltage charger
- 1 12V cable
- 1 shoulder carrying bag.

Suitable for emergency use.

Spare parts

Cod. LTA280 Double power supply (230/50Hz - 12V DC)

Aspimed 2.5

CE
0123



ACCESSORIES INCLUDED

- 1 1000cc Jar with lid with anti-overflow float
- 1 tube connector
- 1 silicone sterilized tube
- 1 car-plug cable
- 1 antibacterial filter,
- 1 disposable sterile suction probe
- 2 power cables



Cod. LRA310
1000cc autoclavable complete jar (LTA420)



Cod. LRA315
Disposable jar to be put inside autoclavable jar LRA310 (jar not included)



Cod. LRA372
1000cc complete jar (LTA280)



Cod. LRA202*
Spare antibacterial filter *Shape may change depending on availability



Cod. LRA122
Ext Ø 8/14 mm 1,3m silicone tube



Cod. LRA110
CH14 - without control
Cod. LRA112
CH14 - with control
Cod. LRA116
CH16 - without control
Suction catheter



Cod. LRA100
Fingertip sterile valve for suction regulation

Technical features

REFERENCES	
Class. EN ISO 10079-1	high vacuum - high flow
TECHNICAL SPECIFICATION	
Rated output	12V DC
Max vacuum adjustable	0 ÷ -0,85 bar
Max aspiration flow	30 l/min
Noise level	61 dBA
Continuous use	45 min.operating time
Rechargeable battery	12V 4Ah
Multivoltage power supply	100÷240V - 50/60 Hz / 14Vdc 4,3A
Capacity	1 lt / autoclavable jar
WEIGHT AND DIMENSION	
W:	D:
H:	Kg
38 cm	13,5 cm
26 cm	4,6 kg

Technical features

REFERENCES	
Class. EN ISO 10079-1	high vacuum - low flow
TECHNICAL SPECIFICATION	
Power supply (double)	230V/50Hz - 12V DC with rechargeable internal battery 12V
Motor	piston pump
Power consumption	50 VA
Battery indicator	LED
Use	continuo
Max. suction	-0,75 bar
Capacity	1 lt / autoclavable jar
WEIGHT AND DIMENSION	
W:	D:
H:	Kg
36 cm	19 cm
21 cm	4,9 kg

BATTERY SUCTION ASPIRATORS

- 28243 SUPER VEGA BATTERY - plastic case - 16 l/min.
- 28190 SUPER VEGA BATTERY - plastic case - 36 l/min.
- 28213 TROLLEY FOR SUPER VEGA
- 28242 BATTERY FOR SUPER VEGA/TOBI (28243*/28240) - spare
- 28251 BATTERY FOR SUPER VEGA (28190/28243**) - spare

*Up to S.N. 2141 (3 LEDs)

**Since S.N. 3000 (1 LED)

With incorporated rechargeable batteries. It can operate at 12 V power supply at rechargeable batteries and, thanks to an electronic system, at 230 V while recharging batteries.

Autonomy: approx 45-50 min (28243), 60 min (28190)

Recharging time: 120-150 minutes.

Max suction: -0.75 bar (28243) -0.80 bar (28190)

Suction power: 16 or 36 air litres/min

It has unbreakable 1,000 ml standard bottle (2,000 ml optional) autoclavable at 120°C with safety float control valve to prevent overflow.



1 l jar with overflow safety valve

36 l/min.

28243

28190

Universal switching power adapter

Cable to recharge batteries from car

TECHNICAL SPECIFICATIONS SUPER VEGA

Operating Voltage: 220-230 V - 50/60 Hz AC - 12 V DC (28243)
100-240 V - 50/60 Hz (28190)

Size: 350x210x180 mm Weight: 4.9 kg

Max suction -0.75 bar (563 mm/Hg) (28243), -0.80 bar (28190)

Suction power: 16 air litres/min (28243), 36 air litres/min (28190)

Norms: IEC 601-1 - Class II Type B. Made in Italy

STANDARD ACCESSORIES

Bottle 1 l - autoclavable at 120°C
Silicone tubing set
Suction catheter
User manual (GB, IT, FR, DE, ES)

AC/DC universal adapter
Anti-bacterial filter
Cable to recharge batteries from car

- 28206 MINI ASPEED BATTERY PRO - metal case - 30 l/min
High vacuum portable medical device for professional surgical aspiration.

- it can operate at 12 V (car) power supply, rechargeable batteries or directly by mains supply

- its two cylinders electro-compressor ensures high performances and long life

- up to 45 min. of autonomy with fully charged battery

- with 99% antibacterial hydrophobic filter

- equipped with autoclavable jar with safety valve, disposable suction liner and carrying case.

- 25480 SILICONE TUBE 6x12 mm - roll of 30 m
- 28254 ADAPTOR FOR CATHETER
- 28255 HYDROPHOBIC 99% BACTERIAL FILTER
- 28258 AUTOCLAVABLE JAR 1000 ml (with cover)
- 28259 DISPOSABLE SUCTION LINER

Disposable suction liner inside autoclavable jar

TECHNICAL SPECIFICATIONS MINI ASPEED

Operating Voltage: 100-240 V 50/60 Hz AC - 14 V DC 4.28 A

Size: 370x100x240 mm Weight: 5.8 kg (include kit)

Max suction: - 0.85 bar

Suction power: 30 air litres/min.

Sound level: 65 db

Norms: MDD 93/42/ECC (class IIa - annex IX)

IEC 60601-1, UNI ENISO 10079-1

Made in Italy

STANDARD ACCESSORIES

Autoclavable jar 1000 cc
Anti-bacterial hydrophobic filter with safety valve
Silicone tubing set Ø 6x12 mm
Cigarette lighter power cord.
Disposable suction liner
Shoulder carrying bag
Sterile cannula
User manual (GB and IT)



28258 +

28259



30 l/min.

CE 0123

28206



Disposable suction liner

Autoclavable jar

Aspirator

Carrying bag

28259

28258

SUPERVEGA SUCTION ASPIRATOR ON TROLLEY

CE 0476

Vacuum indicator
Max suction:
600 mm Hg - 0.80 bar

Silicone tubing
8x14 mm

Adjustable suction knob

Fixed height
75 cm

28191

Multilanguage user manual:
GB, FR, IT, DE, ES

- 28191 SUPER VEGA on trolley - suction 2x2 l jar
 - 28192 SUPER VEGA on trolley - suction 2x2 l jar with footswitch
- Continuously adjustable vacuum, with indicator.
Silicone connection tube. 2 jars 2 litres, made of sterilizable polycarbonate (autoclavable at 120°C).
Working time: 120 min ON, 60 min. OFF.
Suction power: 40 air litres/min.
Steel painted frame, fitted with 5 star base.
Norms CEI 62-5 (IEC 601-1) - Class II - Type B
- 28239 HYDROPHOBIC 99% BACTERIAL FILTER
 - 25482 SILICONE TUBE - 8x14 mm - roll of 30 m

TECHNICAL SPECIFICATIONS

Size: 32x30x90 cm Weight 6.2 kg

Operating voltage: 220-230 V - 50/60 Hz; other on request

Power consumption: 110 VA

Maximum suction: -0.80 bar (600 mm Hg)

Flow: 40 air litres/minute

Operating cycle: continuous

Norms CEI 62-5 (IEC 601-1) - CE 93/42 EEC

User manual (GB, FR, DE, IT, ES)

Made in Italy



Supervega on trolley with disposable jars 28272/3 and 28274/5. See pages 163, 166

MINIASPEED BATTERY EVO PROFESSIONAL SUCTION ASPIRATORS

- 28282 MINIASPEED EVO BATTERY SUCTION - 1 l
 - 28283 MINIASPEED EVO BATTERY SUCTION - 1 l for ambulance
 - 28284 MINIASPEED EVO BATTERY SUCTION - 2 l
- Professional portable high flow - high vacuum aspirators with integrated rechargeable batteries. It works at 12 V power supply with rechargeable batteries or directly by mains supply, continuously at 110-230 V while recharging batteries. Up to 45 minutes of autonomy with fully charged battery. Made in Italy.
- 25480 SILICONE TUBE 6x12 mm - roll of 30 m
 - 28254 ADAPTER FOR CATHETER
 - 28255 HYDROPHOBIC 99% BACTERIAL FILTER
 - 28258 AUTOCLAVABLE JAR 1000 ml (with cover)
 - 28259 DISPOSABLE SUCTION LINER
 - 28294 AUTOCLAVABLE JAR 2,000 ml (with cover)



TECHNICAL SPECIFICATIONS	
Operating voltage:	with battery DC 12 V with power supply 100÷240 V ~ 50/60 Hz - 14 VDC 4,28A
Power consumption:	max 50 W
Size:	134x378xh 263 mm Weight: 4.7 kg (5 kg version for ambulance)
Bottle capacity:	1,000 or 2,000 ml
Flow:	30 air litres/min
Sound level:	65 dBA at 1 m
Operating cycles:	continuous (45 minutes battery autonomy)
MAX vacuum:	0 ± 85 kPa
Internal battery:	12 VDC 4A h lead hermetic
Battery autonomy:	about 45 minutes, recharging time approx 6 hours
Norms:	MDD 93/42/EEC (Class IIa - annex IX) EN60601-1(IEC 60601-1) / EN60601-1-2 (IEC 60601-1-2) UNI EN ISO 10079-1/ UNI CEI EN ISO 14971 Degree of protections against ingress of liquids: IP34d (IEC 529) Class II - Type B

28282 STANDARD ACCESSORIES	
Autoclavable 1 or 2 l jar with safety valve	Power supply cord - 2 m
Sterile disposable cannula CH14	Shoulder carrying bag
Sterile disposable manual regulator	Multivoltage battery charger
Disposable silicone liner 1 l (28282-3 only)	Silicone tubing set Ø 6x12 mm
2 bacterial hydrophobic filters	Support bracket for ambulance (only 28283)
Cigarette lighter power cord (28282, 28284 only)	User manual: GB, IT, FR, DE, ES

SUPERVEGA EVO BATTERY AMBULANCE ASPIRATOR

- 28182 SUPERVEGA EVO AMBULANCE BATTERY ASPIRATOR
 - 28183 SUPERVEGA EVO BATTERY ASPIRATOR
- Supervega Evo is an electric medical device for the nasal, oral and tracheal aspiration of body fluids in children or adults. Two or three options of operation: by 100-240V power feeding (28183 only), 12 V car adapter or internal rechargeable battery. Large LCD for clear reading of vacuum values along with soft keys for vacuum adjustment increase the accuracy of aspiration. Smart operation thanks to the combination of the lightweight lithium-ion battery with the innovating FEEDBACK system that controls and manages the power of aspiration, providing a long autonomy of the battery and quiet noise level during operation. The PROXIMITY function to switch ON or OFF the device without touch prevents and avoids cross-contamination in-between patients. Equipped with a long-life brushless motor eliminating any type of smell and coal residuals. Various options of jar: standard autoclavable polycarbonate (121°C), optional FLOVAC® disposable liners or APEC® that can resist up to 143°C, see at page 163. Complies with EN 60601- 1-11 only 28183 "for use in the home healthcare environment" and carries IP21 degree of protection. Made in Italy.



- PROXIMITY
- RMP FEEDBACK
- LITHIUM BATTERY
- LCD DISPLAY
- AUTOMATIC VACUUM CONTROL

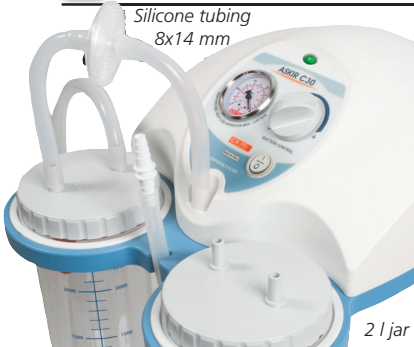
TECHNICAL SPECIFICATIONS	
Motor:	Oil-less and maintenance-free piston pump
Power:	Internal rechargeable Lithium battery (14.8 V - 5.2 A) - Autonomy 70 min Car-ambulance adapter (12 V - 4 A) - only 28183 AC/DC adapter 110-230 V, 50-60 Hz - only 28183 Recharge from support bracket - only 28182
Max vacuum (adjustable):	-0.75 Bar; -75 kPa; -563 mmHg
Max free air flow rate:	26 l/m Size: 35x19x15 cm Weight: 2.7 kg
Duty cycle:	non stop operation (by mains or 12 V only)

STANDARD ACCESSORIES	
Polycarbonate jar 1,000 ml with overflow valve system	Antibacterial filter
Suction catheter	Silicone tube set with conical connector
Universal power adaptor (100-240V - 50/60 Hz) (only 28183)	12V car adapter (only 28183)
Support bracket for ambulance 20x16x16 cm (only 28182)	Carrying bag (only 28182)
User Manual GB, FR, IT, DE, ES.	



SUPER VEGA BATTERY SUCTION ASPIRATOR ON TROLLEY

- 28193 SUPER VEGA BATTERY on trolley - suction 2x2 l
- Portable suction unit for the aspiration of body liquids, oral, nasal and tracheal aspiration in adults or children. For professional use and with a powerful aspiration of max 36 l/min. It comes with double collection jars and on a stand with five castors for easy transport. Two different working options: AC/DC adapter, rechargeable battery make it a versatile suction unit approved for NON-STOP operation without overheating. Provided with visual and acoustic alarm indicating low battery level, vacuum-meter (bar & kPa) and vacuum regulator.



TECHNICAL SPECIFICATIONS	
Size - Weight:	32x30xh 99 cm - 7.9 kg
Operating voltage:	100-240 V - 50/60 Hz
Internal rechargeable Pb battery:	12V - 4A
Battery autonomy:	60 min
Flow:	36 air litres/minute
User manual:	GB, FR, DE, IT, ES
Recharging:	240 min
Temporary use:	120 on - 60 off
Made in Italy	

HIGH VACUUM, HIGH FLOW HOSPITAL SUCTION ASPIRATOR



Standard Clinic Plus and Hospi Plus



Clinic Plus and Hospi Plus with foot switch and electronic flow direction regulator

New innovative range of high vacuum, high flow aspirator ideal for hospitals. Pump piston type, lubrication and maintenance free. Supplied with hydrophobic 99% bacterial filter, vacuum gauge for control of vacuum and 2 autoclavable jars (2 or 4 litres) made in makrolon with 200/400 ml graduation and double security valve. Available on request 2 or 3 litre disposable liners. Range includes version with foot

TECHNICAL SPECIFICATIONS

	Hospi plus	Clinic plus
Operating voltage:	110 V or 230 V - 50/60 Hz	230 V - 50/60 Hz - 110 V on request
Maximum suction:	- 0.90 bar (675 mmHg)	- 0.90 bar (675 mmHg)
Operating cycle:	continuous	continuous
Flow:	90 l/min	60 l/min
Power:	300 VA	230 VA
Norms:	CEI 62-5 (IEC 601-1)	CEI 62-5 (IEC 601-1)
	93/42 EEC. Made in Italy	93/42 EEC. Made in Italy



Size: 460x850x420 mm
Weight: 20 kg

switch and flow direction regulator, 110 and 230 V. Four antistatic castors, two of which with brake, allow a perfect mobility. User manual in GB, FR, IT, ES, DE. See spare accessories at page 159, 166. Made in Italy.

GIMA code	CLINIC PLUS / HOSPI PLUS	Jar	Power	Foot switch	Flow direction diverter*
28194	CLINIC PLUS aspirator	2x2 l	220-230 V	-	-
28196	CLINIC PLUS aspirator	2x4 l	220-230 V	-	-
28198	CLINIC PLUS aspirator	2x4 l	220-230 V	yes	yes
28200	HOSPI PLUS aspirator	2x2 l	220-230 V	-	-
28199	HOSPI PLUS aspirator	2x2 l	110 V	-	-
28201	HOSPI PLUS aspirator	2x4 l	220-230 V	-	-
28203	HOSPI PLUS aspirator	2x2 l	220-230 V	yes	yes
28204	HOSPI PLUS aspirator	2x4 l	220-230 V	yes	yes

*Allow to direct suctioned liquids to any of the 2 jars

MAXI ASPEED HIGH FLOW ASPIRATOR FOR HOSPITAL USE



TECHNICAL SPECIFICATIONS

Operating voltage:	230 V - 50/60 Hz. Available on request 110 V - 60 Hz
Air flow:	60 or 90 l/min
Operating cycle:	continuous
Adjustable vacuum level:	0-0.90 bar (0-90 kPa)
Size:	470x580x560 mm
Weight:	15 kg (60 l), 17 kg (90 l)
MDD class:	Ila

MAXI ASPEED SURGICAL ASPIRATORS

Surgical aspirators for aspiration of body liquids in operating theatres and hospitals.

Easy to carry




Equipped with 4 antistatic wheels (2 with brake) and carrying telescopic handle.

Developed to run continuously

Made in highly heat resistant, electrically insulated plastic material in conformity with latest European safety standards. Vacuum regulator with BAR/PSI vacuometer and automatic flow direction regulator to easily switch from a jar to the other. Supplied with 2 autoclavable polycarbonate jars with safety valve (overflow protection), set of atoxic sterilizable silicone tubes, 99% antibacterial hydrophobic filters (2) and multilingual manual (GB, FR, IT, DE, ES). Made in Italy.

GIMA code	MAXI ASPEED	Jar	Power	Foot switch	Flow direction regulator
28285	Maxi Aspeed 60 l	2x2 l	230 V	-	yes
28286	Maxi Aspeed 60 l	2x2 l	230 V	yes	yes
28288	Maxi Aspeed 60 l	2x4 l	230 V	yes	yes
28289	Maxi Aspeed 90 l	2x2 l	230 V	-	yes
28291	Maxi Aspeed 90 l	2x4 l	230 V	-	yes
28292	Maxi Aspeed 90 l	2x4 l	230 V	yes	yes

ACCESSORIES

28294	Autoclavable jar 2 l with safety valve	
28295	Autoclavable jar 4 l with safety valve	
28297	Hydrophobic 99% antibacterial filter	
25482	Silicone tube - 8x14 mm - roll of 30m	



GIMA

PROFESSIONAL MEDICAL PRODUCTS

BILANCIA DIGITALE PEGASO
PEGASO DIGITAL SCALE
BALANCE NUMÉRIQUE PEGASO
BÁSCULA DIGITAL PEGASO
BALANÇA DIGITAL PEGASO

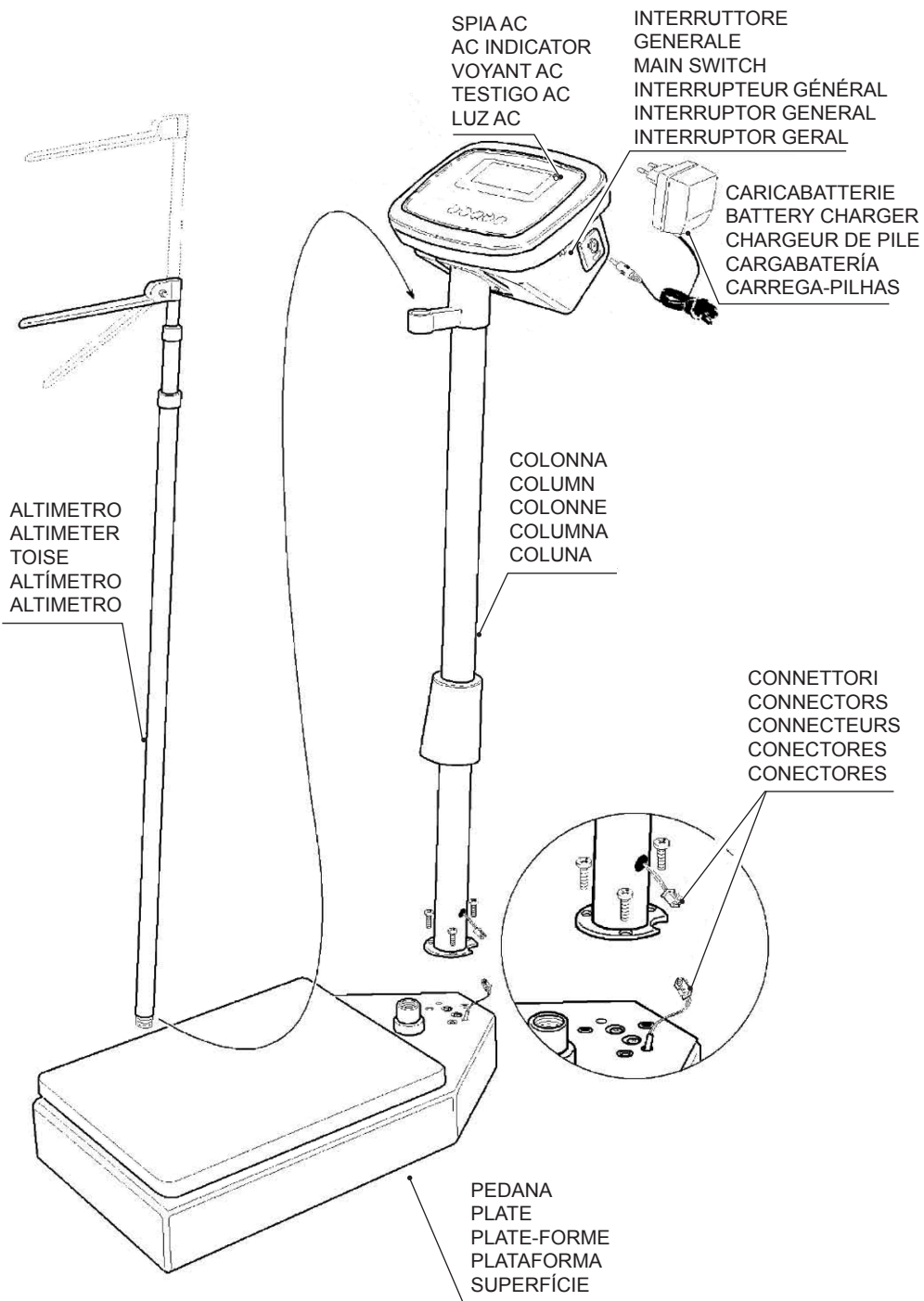
REF

27289

Fabbricante/Manufacturer/Fabricant/Fabricante/Fabricante
GIMA S.p.A.

Via Marconi, 1 - 20060 Gessate (MI) Italy
gima@gimaitaly.com - export@gimaitaly.com
www.gimaitaly.com
Made in ChinaChina





FEATURES

The GIMA Pegaso Digital Scale is a non medical device used to measure the height and weight of the body. It has a large digital display and an internal rechargeable battery, hence it can be used both connected or disconnected from the mains.

Model	27288
Max weight	200kg/440lb
Division	100g/0.2lb
Display	LED
Height Measuring range	80~210cm
Height Measuring division	0,5cm
Environment	Temperature: 5°C~40°C Humidity: 85%RH
Power	6V battery
Scale size	535×275×1030mm (L x W x H)
Net weight of scale	12.0kgs

PRESCRIPTIONS



Do not use the equipment in case it is damaged. Apply to your retailer.

Avoid precarious repairs. Repairs shall be carried out with original spare parts only, which shall be installed according to the intended use.

Since the product is made of corrosion-proof materials suitable for the environmental conditions foreseen for its normal use, does not require special care, however it is necessary to store it in a closed place making sure that is protected from dust and dirt to assure its hygienic conditions. Moreover, it is recommended to store the product in a place which can be reached easily by the personnel in case of necessity.

UNPACKING



Always remember that packing elements (paper, cellophane, stitches, adhesive tape, etc.) can cut and/or hurt if they are not carefully handled.

They shall be removed with adequate means and shall not be left at the mercy of irresponsible persons; the same is valid for tools used to remove packages (scissors, knives, etc.).

After opening the packages, first of all it is necessary to check all pieces and parts composing the product. Check that they are all present and in perfect conditions.

INSTALLATION

The product is mostly factory pre-assembled. Therefore assembly operations are quite simple (see illustration):

- Fix the column to the base with the supplied screws
- Connect the connectors to the base of the column
- Insert the altimeter in the seat on the scale's column
- Fix the altimeter in the hole in the plate
- Insert the battery charger plug in the outlet on the side of the panel
- Connect the battery charger to the mains to charge the scale
- Recharge the scale every time the AC indicator lights up

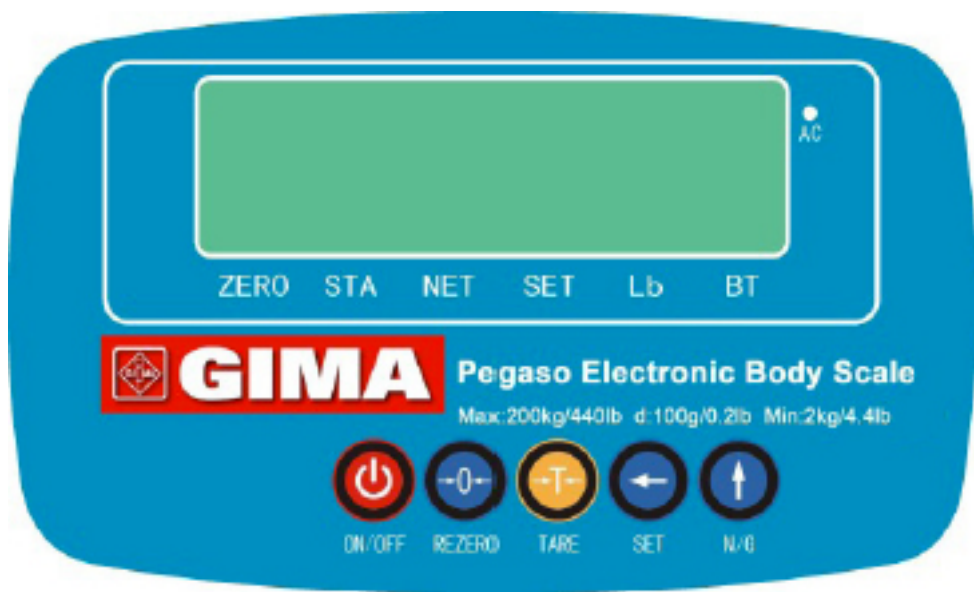
OPERATION

The scale is fitted with an ON/OFF switch. Verify that the switch is set to “1” before any operation. Before the person steps onto the scale it is necessary to lift the cursor of the altimeter beyond the apparent height of the person.

After the person has stepped onto the scale, slowly lower the cursor until it touches the head.



Caution: Do not maintain the cursor in horizontal position because it may generate dangerous situations.



INDICATOR Sign

- [1] [ZERO] : Light when scale is at weight is “0”point.
- [2] [STA] : Light when the weight is in the stable condition.
- [3] [NET] : When scale display net weight, then the indicator is light.
- [4] [SET/HOLD] : When the system CALIBRATION and data set , It's light.
- [5] [Lb] : When the system mode is “Lb” ,the indicator is light.
- [6] [BT] : Battery lower indicator .
- [7] [AC] : When the battery by the charging ,the indicator is light

Function of buttons

- [1] ON/OFF: ON/STAND_BY display and scale operate.
- [2] REZERO: At weighting mode Reset the Weight To “0”, At other mode operation entered and data save function.
- [3] TARE : At weighting mode tare operation , At other mode the key can return weighting mode.
- [4] ←(SET): At weighting mode can enter function selector mode, at function selector mode the key can. Select set digital.
- [5] ↑(N/G): At weighting mode the key can weight hold, at function selector mode the key can modification value by select digital.

[REZERO] Operation

INDICATOR: ● LIGHT ○ FLASH

1: ZERO 2: STA 3: NET 4: SET/HOLD 5:Lb 6: BT 7:AC

OPERATION	DISPLAY	INDICATOR						
	WEIGHT	1	2	3	4	5	6	7
WEIGHT STABLE MODE	0,00	●	●					●
(1) Put weight on plate (Ex. 0.50kg)	0,05		●					●
(2) PRESSED [REZERO] KEY	0,00	●	●					●
(3) Remove the plate weight	-0,05		●					●
(4) PRESSED [REZERO] KEY	0,00	●	●					●

NOTE: If plate the weight is over set re-zero range ($\pm 2\%FS$) , Then press [REZERO] key, After the scale has three beep sound .This can not re-zero operation information.

[TARE] Operation

One Touch Tare

INDICATOR: ● LIGHT ○ FLASH

1: ZERO 2: STA 3: NET 4: SET/HOLD 5:Lb 6: BT 7:AC

OPERATION	DISPLAY	INDICATOR						
	WEIGHT	1	2	3	4	5	6	7
WEIGHT STABLE MODE	0.00	●	●					●
(1) Put weight on plate (Ex. 0.50kg)	0.05		●					●
(2) PRESSED [TARE] KEY	0.00		●	●				●
(3) Remove the plate weight	-0.05	●	●	●				●
(4) PRESSED [TARE] KEY	0.00	●	●					●

NOTE: If the tare-weight is over tare range ($<50\%FS$), the scale sound three beep, when tare key was pressed.

[Weight Hold] Operation

INDICATOR: ● LIGHT ○ FLASH

1: ZERO 2: STA 3: NET 4: SET/HOLD 5:Lb 6: BT 7:AC

OPERATION	DISPLAY	INDICATOR						
	WEIGHT	1	2	3	4	5	6	7
WEIGHT STABLE MODE	0,00	●	●					●
(1) Put weight on plate	10,00		●					●
(2) PRESS [↑] KEY	10,00		●					●
(3) Remove the plate weight	10,00	●	●		○			●
(4) PRESS [↑] KEY	0,00	●	●					●

[Weight unit conversion] Operation

INDICATOR: ● LIGHT ○ FLASH

1: ZERO 2: STA 3: NET 4: SET/HOLD 5:Lb 6: BT 7:AC

OPERATION	DISPLAY	INDICATOR						
	WEIGHT	1	2	3	4	5	6	7
WEIGHT STABLE MODE	0,00	●	●					●
(1) PRESS [←] KEY	UInt.tr	●	●		●			●
(2) PRESS [REZERO] KEY	0,00	●	●			●		●

Specifications for system function and weighting mode

Depress [REZERO] while pressing [←] [←] [←]

SPEC N.	BIT3	BIT 2	BIT 1	BIT 0
00	NOT USE		Auto power off time setting 00 : no auto power off 01 : 3 minute auto power off 10 : 6 minute auto power off 11 : 10 minute auto power off	
03	Open ALARM FUNCTION 0: NO 1: YES	Enable weight unit conversion operations (kg => LB) 0: NO 1: YES	Enable Weight hold operations 0: NO 1: YES	NOT USE

MESSAGE DISPLAY INFORMATION LIST

WEIGHT OVER LOADING ERROR	OF
WEIGHT IS MASK DISPLAY	-- LO
REZERO KEY IS DEPRESSED	8 8 8 8 8 8
SYSTEM A/D BLOCK ERROR	-- 0 - E r
SYSTEM ZERO IS OVER RANGER	z r . E r r
SPAN SWITCH IS ON	S O n
SPAN SWITCH IS OFF	S O F F
SPEC 12,13 SET IS ERROR (WEIGHT FULL IS OVER DISPLAY RANGE)	S - E r r
Internal AD block has error information	- A d E r r

**Standard Weight Calibration**

Depress [REZERO] and [←][T][T] key ,entry to calibration mode, this time display windows display calibration information. (SPAN SW must be ON)

INDICATOR: ● LIGHT ○ FLASH

1: ZERO 2: STA 3: NET 4: SET/HOLD 5: Kg 6: BT 7:AC

OPERATION	DISPLAY	INDICATOR							REMARK
	WEIGHT	1	2	3	4	5	6	7	
Enter [←][T][T]while depressing [REZERO].	888888	●	●					●	
	CAL	●	●		●			●	Display calibration information and span DATA
	15,000	●	●		●			●	
PRESS [←] and [↑]	5,000	●	●		●			●	Modification Sample Weight, Depress [ENTER] to enter zero calibration.
PRESS [ENTER]	5,000	●	●		●			●	
PRESS [ENTER]	CAL 0				●			●	Depress [ENTERR] to enter zero calibration.
	-----				●			●	Zero calibration
PRESS [ENTER]	CAL SP		●		●			●	Depress [ENTER] to enter span calibration.
	-----				●			●	Span calibration.
	5,000		●					●	Calibration is end then return to weigh mode

MANINTENANCE









The product does not require any special maintenance. The technical life of the scale depends on its use. Do not use water or liquid products to clean scale, juts use a soft cloth.



Disposal: *The product must not be disposed of along with other domestic waste. The users must dispose of this equipment by bringing it to a specific recycling point for electric and electronic equipment.*

GIMA WARRANTY TERMS

The Gima 12-month standard B2B warranty applies.

	<p>IT Codice prodotto GB Product code FR Code produit ES Código producto PT Código produto</p>
	<p>IT Numero di lotto GB Lot number FR Numéro de lot ES Número de lote PT Número de lote</p>
	<p>IT Conservare in luogo fresco ed asciutto GB Keep in a cool, dry place FR À conserver dans un endroit frais et sec ES Conservar en un lugar fresco y seco PT Armazenar em local fresco e seco</p>
	<p>IT Conservare al riparo dalla luce solare GB Keep away from sunlight FR À conserver à l'abri de la lumière du soleil ES Conservar al amparo de la luz solar PT Guardar ao abrigo da luz solar</p>
	<p>IT Seguire le istruzioni per l'uso GB Follow instructions for use FR Consulter les instructions d'utilisation ES Siga las instrucciones de uso PT Siga as instruções de uso</p>
	<p>IT Attenzione: Leggere e seguire attentamente le istruzioni (avvertenze) per l'uso GB Caution: read instructions (warnings) carefully FR Attention: lisez attentivement les instructions (avertissements) ES Precaución: lea las instrucciones (advertencias) cuidadosamente PT Cuidado: leia as instruções (avisos) cuidadosamente</p>
	<p>IT Smaltimento RAEE GB WEEE disposal FR Disposition DEEE ES Disposición WEEE PT Disposição REEE</p>
	<p>IT Prodotto conforme alla Direttiva Europea GB Product complies with European Directive FR Ce produit est conforme à la directive européenne ES Producto conforme a la Directiva Europea PT Produto em conformidade com a Diretiva Europeia</p>

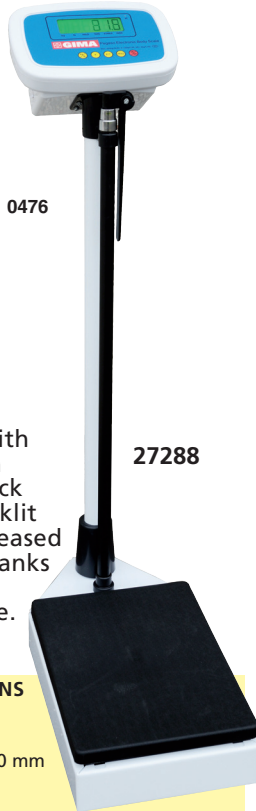
PEGASO DIGITAL SCALE



Anodized aluminium telescopic height rod cm-inches with measurement range 75-210 cm and graduation of 0.5 cm



Switchable kg/lb.



27288

• 27288 PEGASO DIGITAL SCALE with height meter (75x210 cm)

Professional and reliable digital scale with integrated height rod. Easy to use, each function has an on-screen display to track activities in real time. High contrast backlit LCD display with 20 mm figures for increased readability. Exact and reliable results thanks to tare and fixed weight functions. Auto-off function to avoid energy waste. Can be operated by mains or batteries.

• 27281 POWER SUPPLIER - spare

TECHNICAL SPECIFICATIONS

Capacity:	200 kg
Sensitivity:	100 g
Dimensions:	535x275x1,060 mm
Platform:	372x275 mm
Weight:	15 kg
Power supply:	110-240 V - 50/60 Hz
Battery accumulator:	6V 5AH
Recharging time:	4-5 hours
Operating time when fully charged:	36 hours

ASTRA SCALE



Reading on both sides of measuring rod 75 to 200 cm



27310

• 27310 ASTRA SCALE - 200 kg mechanical with height meter (75-200 cm)

Sturdy and reliable beam scale to warrant exact and precise measurements. Made in steel and varnished in high resistance white shellac. Robust lever system. Provided with wheels for easy mobility. User manual in GB, ES, FR, IT, DE, GR, PT, Arabic.

Platform with anti-skid cover
Wheels for easy mobility

TECHNICAL SPECIFICATIONS

Capacity:	200 kg
Sensitivity:	100 g
Weight:	17 kg
Dimensions:	275x1,485x530 mm
Platform:	375x275 mm

DIGITAL CHAIR SCALE

SOEHNLE
PROFESSIONAL

27273



• 27273 CHAIR SCALE SOEHNLE 7802

Fully electronic scale: no wear and tear parts, no maintenance. Easy to read display with 20 mm high figures. Zero setting, taring and hold functions. Tilttable arms for easy access of bed-ridden and frail patients. Powered by either mains or rechargeable batteries. Cable for recharging batteries included. Manual in: DE, GB, FR, NL, ES, IT, PT, CZ, FI, SE, NO, DK, GR, PL, TR.

TECHNICAL SPECIFICATIONS

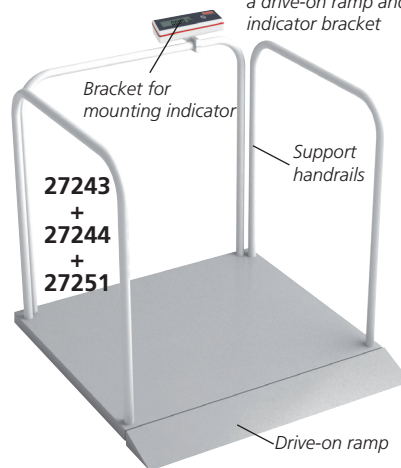
Capacity:	200 kg (440 lb)
Sensitivity:	100 g
Total weight:	25 kg
Dimensions:	580x1,100x930 mm
Power supply:	230 V / 50-60 Hz, 10 mA, 2.2 VA
	Rechargeable batteries

Made in Germany

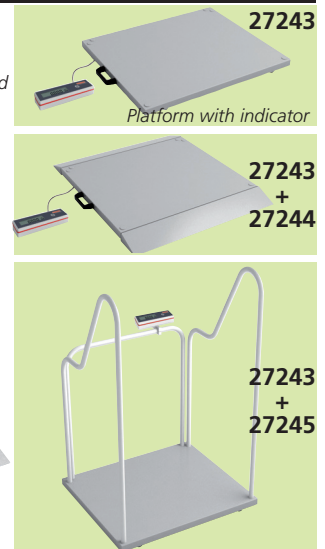
MULTIFUNCTION SCALE

SOEHNLE
PROFESSIONAL

Multifunction scale combined with 3 support handrails, a drive-on ramp and indicator bracket



27243
+
27244
+
27251



27243

27243
+
27244

27243
+
27245

• 27243 MULTIFUNCTION SCALE - SOEHNLE 7808

Manual in: DE, GB, FR, NL, ES, IT, GR, FI, NO, SE, DK, CZ, RU.

• 27244 DRIVE-ON RAMP

• 27245 ADIPOSY HANDRAILS + BRACKET FOR INDICATOR

• 27251 SUPPORT HANDRAILS + BRACKET FOR INDICATOR

• 27278 MULTIFUNCTION SCALE - SOEHNLE 7708 (complete with 27244+27251)

Manual in: GB, FR, DE Multifunction scale prepared for easy (and later) mounting of support handrails, adiposity handrails, bracket for indicator, drive-on ramps. Movable by means of 2 rollers and handle. Large LCD display, digit height 20 mm. Made in Germany.

TECHNICAL SPECIFICATIONS

Capacity:	300 kg	Sensitivity:	100 g
Dimension:	840x880x55 mm	Weight:	16 kg
Power supply:	230 V - 50-60 Hz		

(available on request with rechargeable battery or Class III)



german|engineering

BY 80 Babywaage

Babywaage mit gewölbter Wiegefläche
 Großes, gut ablesbares LCD-Display: 75 x 30 mm
 Ziffernhöhe: 23 mm

Automatische und manuelle Hold-Funktion zur Erfassung des Gewichts bei strampelnden Babys

Einfach zu reinigen

Tara-Zuwiegefunktion

5 g Einteilung (0,011 lb / 0,018 oz)

Tragkraft 20 kg (44 lb/704 oz)

Abschaltautomatik

Überlastungsanzeige

Umstellung von kg/lb/oz

Verpackung mit praktischem Tragegriff

Inklusive 2 x 1,5V Micro, Typ AA Batterien

Produktmaße: 550 x 310 x 53 mm

Produktgewicht: ca. 1900 g

5 Jahre Garantie

VE: 2 / Transportkarton: -

EAN-Nr.: 4211125 95605 9

Art.-Nr.: 956.05



BY 80 Baby scale

Baby scale with curved weighing platform

Large, easy to read LCD-display: 75 x 30 mm

Digit size: 23 mm

Automatically and manual hold function for survey of the weight for kicking babies

Easy to clean

Tara weight function

5 g graduation (0.011 lb / 0.018 oz)

20 kg capacity (44 lb/704 oz)

Automatic switch off

Overload indication

Change over to kg/lb/oz

Gift box with practical handle

Incl. 2 x 1.5V micro, type AA batteries

Product measurements: 550 x 310 x 53 mm

Product weight: approx. 1900 g

5 year guarantee

Sales unit: 2 / Shipping carton: -

EAN no.: 4211125 95605 9

Item no.: 956.05





PO 45

beurer
medical

PO 45 Pulse Oximeter

 german
engineering



Determining oxygen saturation (SpO₂), heart rate (pulse) and perfusion index (PI)



Determining arterial oxygen saturation (SpO₂), heart rate (pulse frequency) and perfusion index (PI)

Simple and completely pain-free measurement

Small and light – for use at home and on the move

Particularly suitable for persons with:

- Heart failure
- Chronic obstructive pulmonary diseases
- Bronchial asthma

Suitable for sports at high altitudes (e.g. mountaineering, skiing and aviation sports)

Symbol display for inaccurate measurement

Easy-to-read colour display

Colour display with 7 display formats

Adjustable display brightness

Graphical display of pulse

Low battery indicator

Automatic switch-off

Incl. retaining strap and belt pouch

Medical product

Incl. 2 x AAA batteries

Product measurements: 59 x 33 x 34mm

Product weight: approx. 31,5 g (without batteries)

5 year guarantee

Sales unit: 4 / Shipping carton: 8 x 4

EAN no.: 421112545434 0

Item no.: 454.34

ENGLISH

Dear customer,

Thank you for choosing one of our products. Our name stands for high-quality, thoroughly tested products for applications in the areas of heat, weight, blood pressure, body temperature, pulse, gentle therapy, massage, beauty, baby and air. Please read these instructions for use carefully and keep them for later use, be sure to make them accessible to other users and observe the information they contain. With kind regards, Your Beurer team

1. Included in delivery

1x PO 45 pulse oximeter, 2x 1.5 V AAA batteries, 1x lanyard, 1x belt bag, 1x these instructions for use

2. Intended use

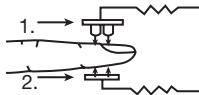
The Fingertip Pulse Oximeter PO 45 is a handheld non-invasive device intended for spot-checking of oxygen saturation of arterial hemoglobin (SpO₂) and Pulse Rate of adult, adolescent and child patients in hospitals, hospital-type facilities and homecare.

3. Getting to know your instrument

The Beurer PO 45 pulse oximeter provides a non-invasive measurement of the arterial oxygen saturation (SpO₂), the heart rate (pulse rate) (PRbpm) and the perfusion index (PI). Oxygen saturation indicates the percentage of haemoglobin in arterial blood that is loaded with oxygen. Therefore it is an important parameter for assessing the respiratory function.

Oxygen binds to hemoglobin in red blood cells when moving through the lungs. It is transported throughout the body as arterial blood. A pulse oximeter uses two frequencies of light (red and infrared) to determine the percentage (%) of hemoglobin in the blood that is saturated with oxygen. The percentage is called blood oxygen saturation, or SpO₂. A pulse oximeter also measures and displays the pulse rate at the same time it measures the SpO₂ level.

- 1. Red and Infrared-ray Emission Tube
- 2. Red and Infrared-ray Receipt Tube



A low oxygen saturation value generally indicates underlying illnesses (respiratory diseases, asthma, heart failure etc.).

People with a low oxygen saturation value are more likely to experience the following symptoms: shortness of breath, increased heart rate, weakness, nervousness and outbreaks of sweating. If oxygen saturation is known to be chronically diminished, it requires monitoring using the pulse oximeter under medical supervision. If you have acutely diminished oxygen saturation, with or without the accompanying symptoms, you must consult a doctor immediately as it could lead to a life-threatening situation. The pulse oximeter is particularly suitable for patients at risk such as people with heart disease or asthma, but also for athletes and healthy people who exercise at high altitude (e.g. mountaineers, skiers or amateur pilots).

Features of the pulse oximeter

- Easy to use and to take with you (ideal for on the go)
- Compact, lightweight design
- Two-colour OLED display, readings for oxygen saturation (SpO₂), pulse rate (PRbpm) and perfusion index (PI) are shown
- Adjustable display brightness (1 to 10)
- 7 display formats/low battery indicator/automatic switch-off after 8 seconds if no signal is received

4. Signs and symbols

The following symbols are used in these instructions for use, on the packaging and on the type plate for the device:

	WARNING Warning instruction indicating a risk of injury or damage to health		Manufacturer
	IMPORTANT Safety note regarding potential for damage to the device/accessories		Application part, type BF
	Note Note on important information		Do not dispose of batteries containing hazardous substances with household waste.
	Observe the instructions for use		This product satisfies the requirements of the applicable European and national directives.
	Arterial oxygen saturation of haemoglobin (in percent)		Serial number
	Pulse rate (beats per minute)		Alarm suppression
	Perfusions index		Device protected against foreign objects ≥ 12.5 mm and against falling drops of water
	Permissible storage temperature and humidity		Disposal in accordance with the Waste Electrical and Electronic Equipment EC Directive - WEEE
	Permissible operating temperature and humidity		Dispose of packaging in an environmentally friendly manner
	Low power indication		

5. Warnings and safety notes

Non-observance of the following information may result in personal injury or material damage. Store these instructions for use and make them accessible to other users. Make sure you include these instructions for use when handing over the device to third parties.

WARNING

- Check to ensure that the package contains all the parts that should be included in the delivery.
- Check the pulse oximeter regularly before use to ensure that there is no visible damage to the device and the batteries are still sufficiently charged. In case of doubt, do not use the device and contact Beurer customer services or an authorised retailer.
- Do not use any additional parts that are not recommended by the manufacturer or offered as equipment.
- Under no circumstances should you open or repair the device yourself, as faultless functionality could no longer be guaranteed thereafter. Failure to comply will result in voiding of the warranty. For repairs, please contact Beurer customer services or an authorised retailer.

Do NOT use the pulse oximeter

- if you are allergic to rubber products.
- if the device or the finger you are using is damp.
- on small children or babies.
- during an MRI or CT scan.
- while transporting a patient other than within a medical establishment.
- whilst taking a blood pressure measurement on the same arm using a cuff.
- on fingers that have nail varnish on, are dirty or have a plaster or other dressing on them.
- on large fingers that do not fit into the device easily (fingertip: width approx. > 20 mm, thickness approx. > 15 mm).
- on fingers with anatomical changes, oedemas, scars or burns.
- on fingers that are too small, as with small children for example (width approx. < 10 mm, thickness < 5 mm).
- on patients who are not steady at the site of application (e.g. trembling).
- near flammable or explosive gas mixtures.
- Using the device for long periods may cause pain for people with circulatory disorders. Therefore do not use the pulse oximeter for longer than 30 minutes on one finger. This is essential to ensure correct sensor orientation and to safeguard the integrity of the skin.
- The pulse oximeter displays an instantaneous measurement but cannot be used for continuous monitoring.
- The pulse oximeter does not have an alarm function and is therefore not suitable for evaluating medical results.
- Do not self-diagnose or self-medicate on the basis of the measurements without consulting your doctor. In particular, do not start taking any new medication or change the type and/or dosage of any existing medication without prior approval.
- Do not look directly inside the housing during the measurement. The red light and the invisible infra-red light in the pulse oximeter are harmful to your eyes.
- Portable RF communications equipment (including peripherals such as antenna cables and external antennas) should be used no closer than 30 cm (12 inches) to any part of the PO 45. Otherwise, degradation of the performance of this equipment could result.
- The pulse oximeter equipment is calibrated to display functional oxygen saturation.
- This device is not intended for use by people (including children) with restricted physical, sensory or mental skills or a lack of experience and/or a lack of knowledge, unless they are supervised by a person who has responsibility for their safety or they receive instructions from this person on how to use the device. Children should be supervised around the device to ensure they do not play with it.
- The displays for the pulse wave and pulse bar allows the strength of the pulse or circulation to be evaluated at the measurement site. Rather, they are exclusively used to display the current visual signal variation at the measurement site and do not enable reliable diagnostics for the pulse.

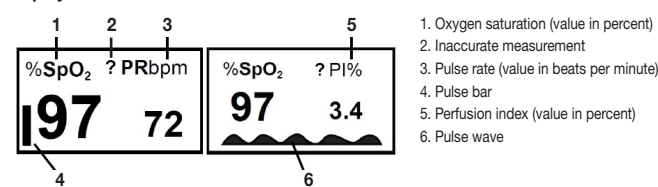
Non-observance of the following instructions can lead to incorrect or failed measurements:

- There must not be any nail varnish, artificial nails or other cosmetics on the finger to be measured.
- Ensure that the finger nail on the finger to be measured is short enough that the fingertip covers the sensor element in the housing.
- If the person moves while the measurement is being taken. Keep your hand, finger and body steady during the measurement.
- For people with cardiac arrhythmia, the oxygen saturation level (SpO₂) readings and the heart rate (PRbpm) may be incorrect or the measurement may not be possible at all.
- If an electronic surgical device or defibrillator is used, the functioning of the pulse oximeter may be impaired.
- In cases of carbon monoxide poisoning, the pulse oximeter displays a measurement value that is too high.
- To avoid falsifying the measuring result, there should not be any strong light sources (e.g. fluorescent lamps or direct sunlight) in the immediate vicinity of the pulse oximeter.
- People with low blood pressure, who suffer from jaundice or take medication for vascular contraction may experience incorrect or falsified measurements.
- Incorrect measurements are likely for patients who have been administered medical dye in the past or for those who have abnormal haemoglobin levels. This applies in particular for cases of carbon monoxide poisoning and methaemoglobin poisoning, which can occur for example from the administration of local anaesthetics or from an existing methaemoglobin reductase deficiency.
- The measurement may be falsified in patients with an arterial catheter, hypotension, severe vascular constriction, anaemia or hypothermia.
- Protect the pulse oximeter from dust, shocks, moisture, extreme temperatures and explosive materials.

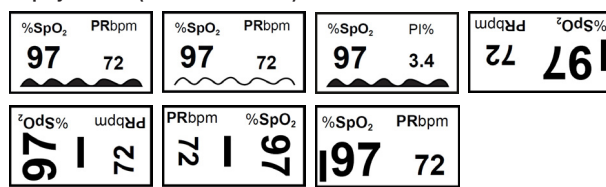
6. Unit description



Display

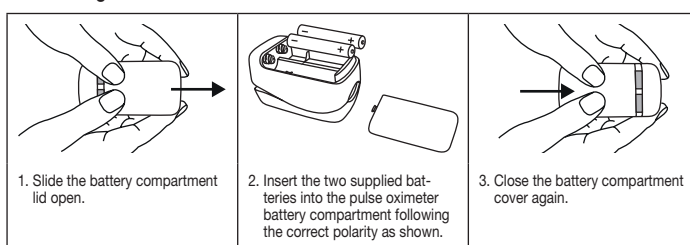


Display formats (7 different formats)



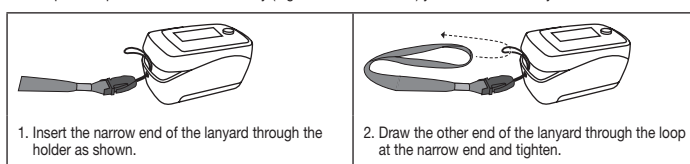
7. Initial use

7.1 Inserting the batteries

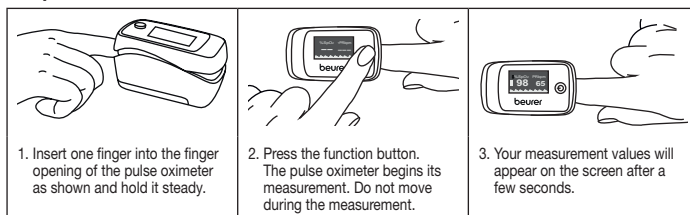


7.2 Attaching the lanyard

To transport the pulse oximeter more easily (e.g. whilst on the move) you can attach a lanyard to the device.



8. Operation



Note

- If the ? symbol appears on the display this indicates that the measurement signal is unstable, and the readings shown are invalid.
- When you remove your finger from the pulse oximeter, the device will automatically switch off after approx. 8 seconds.
- To select your desired display format, hold down the function button briefly during operation.
- To select your desired display brightness, hold down the function button for slightly longer during operation.

9. Evaluating measurement results

WARNING	
The following table for evaluating your measurements does NOT apply to people with certain pre-existing conditions (e.g. asthma, heart failure, respiratory diseases) or whilst staying at altitudes above 1500 metres. If you have a pre-existing condition, always consult your doctor to evaluate your measurements.	
SpO ₂ (oxygen saturation) measurement in %	Classification/measures to be taken
99–94	Normal range
93–90	Decreased range: Visit to the doctor recommended
< 90	Critical range: Seek medical attention urgently

Source: Adapted to "Windisch W et al. Guidelines for Non-Invasive and Invasive Home Mechanical Ventilation for Treatment of Chronic Respiratory Failure. Update 2017; Pneumologie 2017; 71: 722/95"

Evaluating perfusion index

The perfusion index (PI) may lie between 0.3% and 20%, and varies depending on the patient, measurement location and state of health. A very low PI value can impair the measurement.

Decline in oxygen saturation depending on altitude

Note

The following table informs you of the effects of various altitudes on oxygen saturation value and its impact on the human body. The following table does NOT apply to people with certain pre-existing conditions (e.g. asthma, heart failure, respiratory diseases etc.). People with pre-existing conditions can show signs of illness (e.g. hypoxia) at lower altitudes.

Altitude	Expected SpO ₂ value (oxygen saturation) in %	Impact on human body
1500–2500 m	> 90	No altitude sickness (normally)
2500–3500 m	~90	Altitude sickness, acclimatisation recommended
3500–5800 m	< 90	Very frequent altitude sickness, acclimatisation absolutely essential
5800–7500 m	< 80	Severe hypoxia, only limited length of stay possible
7500–8850 m	< 70	Immediate, acute danger to life

Source: Hackett PH, Roach RC: High-Altitude Medicine. In: Auerbach PS (ed): Wilderness Medicine, 3rd edition; Mosby, St.Louis, MO 1995; 1-37.

10. Maintenance/cleaning

IMPORTANT:

Do not use high pressure or ethylene oxide sterilisation on the pulse oximeter! The device is not suitable for sterilisation. Under no circumstances should you hold the pulse oximeter under water, as this can cause liquid to enter and damage the pulse oximeter.

- Clean the housing and the interior rubber surface with a soft cloth dampened with medical alcohol after each use.
- If a low battery status appears on the display of the pulse oximeter, change the batteries.
- If you are not going to use the pulse oximeter for more than one month, remove both batteries from the device to avoid possible leaking.

11. Storage

IMPORTANT:

Store the pulse oximeter in a dry place (relative humidity ≤ 93 %). If the humidity is too high it may shorten the service life of the pulse oximeter or damage it. Store the pulse oximeter in a place where the ambient temperature is between -25 °C and 70 °C.

12. Disposal

Please dispose of the device in accordance with EC Directive - WEEE (Waste Electrical and Electronic Equipment). If you have any questions, please contact the local authorities responsible for waste disposal.

The empty, completely flat batteries should be disposed of through specially designated collection boxes, recycling points or electronics retailers. You are legally required to dispose of the batteries.

Note: The codes below are printed on batteries containing harmful substances:

- Pb = Battery contains lead,
- Cd = Battery contains cadmium,
- Hg = Battery contains mercury.

13. What if there are problems?

Problem	Possible cause	Solution
Finger out appears on the display	The finger on which the measurement is being taken has not been inserted properly in the pulse oximeter	Insert the finger in the pulse oximeter again
Measurement values are not correctly displayed	The measured SpO ₂ is too low (< 70 %)	Do the measurement again. If the problem occurs repeatedly and the device is functioning properly, seek medical advice as a matter of urgency
	There is a strong light source (e.g. fluorescent lamp or direct sunlight) in the vicinity	Remove pulse oximeter from the vicinity of these light sources
The pulse oximeter is displaying measurement interruptions or high measurement value jumps	Insufficient circulation in the measurement finger	Observe the warnings and safety notes in section 5
	Measurement finger is too large or too small	Fingertip must have the following measurements: Width between 10 and 20 mm Thickness between 5 and 15 mm
	Finger, hand or body is moving	Keep your finger, hand and body still during the measurement.
	Cardiac arrhythmia	Seek medical attention
Pulse oximeter will not switch on.	Batteries are flat	Replace the batteries
	The batteries have not been inserted correctly	Reinsert the batteries
	The pulse oximeter is faulty.	Contact the retailer or Customer Services
Indicator light goes out suddenly	The pulse oximeter switches off automatically after 8 seconds if it is not receiving a signal.	Switch the pulse oximeter on again using the ON/OFF button.
	Batteries are flat	Replace the batteries
Error 3 appears on the display	The red light receiving LED is faulty	Contact the retailer or Customer Services
Error 4 appears on the display	The infrared light receiving LED is faulty	Contact the retailer or Customer Services
Error 6 appears on the display	The display is faulty.	Contact the retailer or Customer Services
Error 7 appears on the display	The receiving LEDs are faulty	Contact the retailer or Customer Services

14. Technical data

Type	PO 45
Measurement method	Non-invasive measurement of arterial oxygen saturation of haemoglobin, pulse rate and perfusion index in finger.
Measurement range	SpO ₂ (oxygen saturation): 70–100 %, pulse: 30–250 beats/minute PI: 0.3–20 %
Accuracy	SpO ₂ (oxygen saturation): 70–100 %, ± 2 %, pulse: 30–250 bpm, ± 2 beats/minute PI: 0.3% – 1 %; ± 0.2 digits; > 1.1 % ± 20 %
Dimensions	L 59 mm x W 33 mm x H 33 mm
Weight	Approx. 57 g (including batteries)
Sensor to measure SpO ₂	Red light (wave length 660 nm ± 3nm, 3.2 mW); infra-red (wave length 905 nm ± 10 nm, 2.4 mW); silicon receiver diode
Permissible operating conditions	+5 °C to +40 °C, ≤ 15–93 % relative humidity, 70–106 kPa ambient pressure
Permissible storage conditions	-25 °C to +70 °C, ≤ 93 % relative humidity, 70–106 kPa ambient pressure
Power supply	2 x 1.5V AAA batteries
Battery life	2 AAA alkaline batteries last for approx. 2 years of operation at 1 measurement per day (each of 60 seconds).
Classification	IP22, application part, type BF
Equipment response time	Response time of changing value is 8 seconds.

The serial number is located on the device or in the battery compartment.

Technical information is subject to change without notification to allow for updates.
 • This device conforms with the European standards EN60601-1 and EN60601-1-2 (in accordance with CISPR, IEC 61000-4-2, IEC 61000-4-3 and IEC 61000-4-8) and is subject to particular precautions with regard to electromagnetic compatibility. Please note that portable and mobile HF communication systems may interfere with this device. For more details, please contact our Customer Services at the address indicated.
 • This device complies with EU Directive 93/42/EEC concerning medical devices, the Medizinproduktegesetz (German Medical Devices Act) and the DIN EN ISO 80601-2-61 standard (Medical electrical equipment – Particular requirements for the basic safety and essential performance of pulse oximeter equipment for medical use).

Notes on electromagnetic compatibility

WARNING

- The device is suitable for use in all environments listed in these instructions for use, including domestic environments.
- The use of the device may be limited in the presence of electromagnetic disturbances. This could result in issues such as error messages or the failure of the display/device.
- Avoid using this device directly next to other devices or stacked on top of other devices, as this could lead to faulty operation. If, however, it is necessary to use the device in the manner stated, this device as well as the other devices must be monitored to ensure they are working properly.
- The use of accessories other than those specified or provided by the manufacturer of this device can lead to an increase in electromagnetic emissions or a decrease in the device's electromagnetic immunity; this can result in faulty operation.
- Keep portable RF communication devices (including peripheral equipment, such as antenna cables or external antennas) at least 30 cm away from all device parts, including all cables included in delivery. Failure to comply with the above can impair the performance of the device.
- Failure to comply with the above can impair the performance of the device.

15. Warranty/service

Beurer GmbH, Söflinger Straße 218, 89077 Ulm, Germany (hereinafter referred to as "Beurer") provides a warranty for this product, subject to the requirements below and to the extent described as follows.

The warranty conditions below shall not affect the seller's statutory warranty obligations which ensue from the sales agreement with the buyer. The warranty shall apply without prejudice to any mandatory statutory provisions on liability.

Beurer guarantees the perfect functionality and completeness of this product.

The worldwide warranty period is 5 years, commencing from the purchase of the new, unused product from the seller.

The warranty only applies to products purchased by the buyer as a consumer and used exclusively for personal purposes in the context of domestic use. German law shall apply.

During the warranty period, should this product prove to be incomplete or defective in functionality in accordance with the following provisions, Beurer shall carry out a repair or a replacement delivery free of charge, in accordance with these warranty conditions.

If the buyer wishes to make a warranty claim, they should approach their local retailer in the first instance: see the attached "International Service" list of service addresses.

The buyer will then receive further information about the processing of the warranty claim, e.g. where they can send the product and what documentation is required.

A warranty claim shall only be considered if the buyer can provide Beurer, or an authorised Beurer partner, with - a copy of the invoice/purchase receipt, and - the original product.

The following are explicitly excluded from this warranty:

- deterioration due to normal use or consumption of the product;
- accessories supplied with this product which are worn out or used up through proper use (e.g. batteries, rechargeable batteries, cuffs, seals, electrodes, light sources, attachments and nebuliser accessories);
- products that are used, cleaned, stored or maintained improperly and/or contrary to the provisions of the instructions for use, as well as products that have been opened, repaired or modified by the buyer or by a service centre not authorised by Beurer;
- damage that arises during transport between manufacturer and customer, or between service centre and customer;
- products purchased as seconds or as used goods;
- consequential damage arising from a fault in this product (however, in this case, claims may exist arising from product liability or other compulsory statutory liability provisions).

Repairs or an exchange in full do not extend the warranty period under any circumstances.

Subject to errors and changes

- EN** Finger pulse oximeters
- F** Oxymètres de pouls
- ES** Pulsioxímetros de dedo
- P** Oxímetro de dedo

Adult

Pediatric

Cod. LTD800
LED display



Cod. LTD805
Rotating LCD display



Cod. LTD807
Pediatric from 2 to 8 years
Rotating display



* Maximum opening W:2 cm H:2,7 cm

Simple, small, light-weight (50 gr. with batteries), easy to carry. Low battery signal. Automatic turning-off after 8 seconds without signal. Putting the finger in the sensor, the pulse oximeter will give you the oxygen saturation and the pulse rate in few seconds. 2 AAA batteries guarantee 30hrs measurements. A string to carry the device is provided. LTD805 and LTD807: pressing the on button you can rotate the display. Keeping it pressed you can adjust the display brightness.

Accessories included



Cod. LDR196
Rubber protective cover for LTD800-LTD805



Cod. LDR194
Rubber protective cover for LTD807



String to carry

Optional accessories



Cod. LDR195B Blue
Cod. LDR195R Red
Cod. LDR195V Green

Padded and resistant cover for pulse oximeters. It can be held on belt loop and on lanyard.

Technical features

Product code	LTD800	LTD805
SPECIFICATIONS		
Display	LED	LCD
Batteries included	2 AAA alkaline batteries	
Parameters	SpO ₂ , pulse	SpO ₂ , pulse, SpO ₂ wave, tracing
Alarm	low battery indication	
SpO ₂		
Measurement range	0-100%	0-99%
Resolution	1%	
Accuracy	70% - 100%: ± 2% 0% - 69%: not specified	
PULSE RATE		
Measurement range	30-250 bpm	
Resolution	1 bpm	
Accuracy	30-99: ± 2 bpm 100-250: ± 2%	
WEIGHT AND DIMENSION		
W:	5,8 cm	
D:	3,2 cm	
H:	3,3 cm	3,4 cm
Weight	50g (with batteries) 40g (without batteries)	

Technical features

Product code	LTD807
SPECIFICATIONS	
Display	LCD
Batteries included	2 AAA alkaline batteries
Parameters	SpO ₂ , pulse, tracing
Alarm	low battery indication
SpO ₂	
Measurement range	0-99%
Resolution	1%
Accuracy	70% - 100%; ± 2% 0% - 69%; not specified
PULSE RATE	
Measurement range	30-250 bpm
Resolution	1 bpm
Accuracy	30-99: ± 2 bpm 100-250: ± 2%
WEIGHT AND DIMENSION	
W:	5 cm
D:	2,9 cm
H:	2,8 cm
Weight	50g (with batteries) 40g (without batteries)

- EN** Hand type pulse oximeter with alarms and graphic trend
- F** Oxymètre de pouls avec alarmes et écran graphique
- ES** Pulsioxímetro portátil con alarmas y monitor de control
- P** Oxímetro de pulso palmar com alarmes e display gráfico

It can be connected to PC

Cod. LTD822 Hand type pulse oximeter with alarms, storage and graphic display. Visual and sound alarms can be set up. Sensor compatible BCI (disposable, without connector)

Cod. LTD823 Same characteristics as LTD822, internal mode and sensor NELLCOR OXIMAX (the sensor can be substituted with NELLCOR sensors only). Integrated temperature mode, probe included



Easy to read

Measurement trend visualization

Accessories included



Carrying bag



Cod. LDR200
1 adult clip sensor, for LTD822 only

Simple and light-weight, it's suitable for monitoring adult, children and newborn babies; in the LCD high resolution display, you can check last 10 minutes registration in graphic trend or in table mode. It is possible to record information up to 100 patients for 300 hours. This pulse oximeter is compatible with DB9 Nellcor and with BCI sensors and can be connected to computer with a special software (LTD825 not included).

Technical features

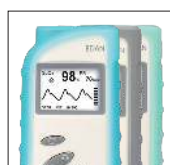
REFERENCES	
Electric class	internal power source
Safety	B class - BF type -IPX2
SPECIFICATIONS	
Display	LCD 128 x 64 dot-matrix
Batteries included	4 AA 1.5V alkaline (compatible with rechargeable batteries)
Battery life	48 h continuously
Alarm	SpO ₂ - BMP
Memory	100 patients, 300 h
RANGE	
SpO ₂	0-100%
BPM	25-300 BPM

SATURATION			
Adult and pediatric	±2 (70-100%)		
Newborn	±3 (70-100%)		
In movement	±3 (70-100%)		
PULSE RATE			
Adult and pediatric	±3 bpm		
Newborn	±3 bpm		
In movement	±5 bpm		
Resolution			
SpO ₂	1%		
Bpm	1 bpm		
WEIGHT AND DIMENSION			
W:	D:	H:	Weight
7 cm	3,76 cm	16 cm	165 g without batteries

Optional accessories



Cod. LTD822R
Battery charger only for LTD822 with Battery included



Cod. LDR197B Blue
Cod. LDR197G Grey
Cod. LDR197V Green
Silicone cover



Cod. LTD825
Software for memories management of LTD822 and LTD823. You can transfer the pulse oximeter records to your computer through the sensor connection and the cable included in the software. You can print the data tables on normal paper or create a PDF file.

Cod. LDR208
Rechargeable battery (not illustrated)

- EN** Hand held pulse oximeter with alarms
- F** Oxymètre de pouls avec alarmes
- ES** Pulsioxímetro portátil con alarmas
- P** Oxímetro de pulso palmar com alarmes

It can be connected to PC - Colour display

Cod. LTD821



Indicated for adult, paediatric and neonatal patients in hospitals and home care. 72-hour memory and 24-hour continuous working time.

Technical features

SPECIFICATIONS			
Adult and pediatric			
Display	TFT da 2.4"		
Battery - 3 AA alkaline batteries or NiMh batteries, or power adapter			
Autonomy	1 h continuously		
Adjustable levels of video sound alarm and battery indicator			
Visualization of SpO ₂ , PR, wave form and pulse intensity			
72h memory			
MedView Software to analyse recorded data			
USB cable for the data transmission on PC			
Protection type: device with inner power source			
SpO ₂			
Visualization range	0% - 100%		
Measurement range	70% - 100%		
Resolution	1%		
Accuracy	70% - 100%: ±2% 0% - 69%: not specified		
PR			
Visualization range	0 - 254 bpm		
Measurement range	30 - 250 bpm		
Resolution	±2 bpm o 2%		
PERFUSION INDEX			
Visualization range	0.1% - 20%		
Accuracy	0.1% - 1%: ±0.2% 1.1% - 20%: 20%		
WEIGHT AND DIMENSION			
W:	D:	H:	Kg
12,5 cm	6 cm	3 cm	141 g (without batteries)

Accessories included

- 3 AA alkaline batteries
(not illustrated)
- Adult clip sensor
(not illustrated)
- CD Software
(not illustrated)
- USB cable
(not illustrated)

Optional accessories

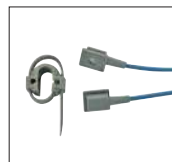
- Cod. **LDR225**
Power adapter
(not illustrated)
- Cod. **LDR226**
Battery charger stand
(not illustrated)
- Cod. **LDR198**
Extension cable 2 m
(not illustrated)

Sensors and cable for pulseoximeter

LTD821



Cod. **LDR120 90 cm**
Soft adult sensor



Cod. **LDR125 90 cm**
Wraparound adult sensor



Cod. **LDR198 2 m**
Extension cable



Cod. **LDR105N 90 cm**
Adult hinged sensor
(LOT production after 02/2015)



Cod. **LDR115N 90 cm**
Pediatric hinged sensor
(LOT production after 02/2015)



Cod. **LDR135N 90 cm**
Neonate sensor Y type
(LOT production after 02/2015)

LTD822



Cod. **LDR200 90 cm**
Adult hinged sensor



Cod. **LDR209 1,5 mt**
Extension cable for sensors



Cod. **LDR202 90 cm**
Soft adult sensor



Cod. **LDR203 90 cm**
Soft pediatric



Cod. **LDR204 90 cm**
Wraparound neonate sensor



Cod. **LDR206 1 mt**
Adult/pediatric lobe sensor

SCHEDA TECNICA DI DISPOSITIVO	Rev. 04 – 31.10.2018	Modulo STD
-------------------------------	----------------------	------------

LTD82x	Pulsiossimetro palmare DIMED con allarmi e display grafico.
--------	---

Destinazione d'uso

Dispositivo per la misurazione non invasiva della saturazione di ossigeno nel sangue e del battito cardiaco.

Caratteristiche principali

Pulsiossimetro di grande affidabilità e precisione, leggero, compatto e idoneo per il monitoraggio di adulti, bambini e neonati. Display LCD ad alta risoluzione. Operazioni con pulsanti brevi e concise, disegnato con impugnatura anatomica antiscivolo, può fornire informazioni continue ed affidabili sulla saturazione di ossigeno. Particolarmente adatto ad ogni Clinica Specializzata, Ospedale e per il trasferimento dei pazienti o per l'assistenza domiciliare. Possibilità di visualizzare il TREND (andamento) in modo GRAFICO ed in modalità TABELLA degli ultimi 10 minuti su un'unica schermata. 300 ore di memoria per 100 pazienti diversi. Possibilità di collegamento al computer con software dedicato opzionale

Immagine prodotto

RIFERIMENTI FABBRICANTE

Fabbricante ai sensi 93/42	EDAN INSTRUMENTS INC
Paese di produzione	CINA
Codice produttore	H100B
Classe di dispositivo 93/42	Classe IIa
Codice di classificazione GMDN	45607
Codice di classificazione CND	Z1203020408

MATERIALI A CONTATTO CON IL PAZIENTE

Interno sensore	Silicone
-----------------	----------

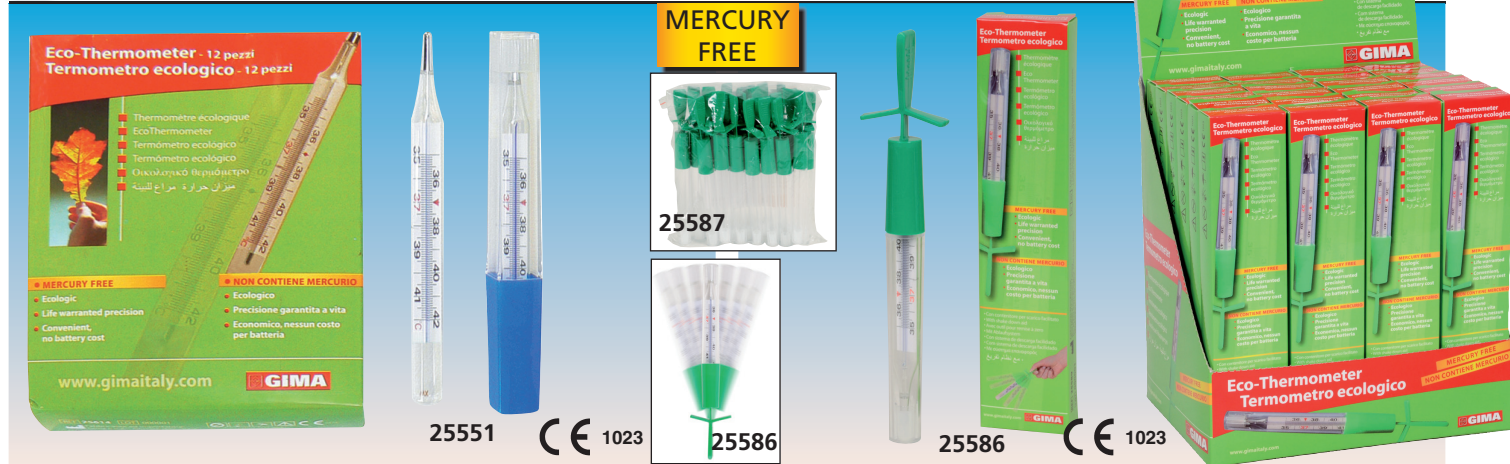
DATI TECNICI

Formato del display	LCD 128x 64 dot
Display saturazione SPO2	0 – 100%
Display pulsazioni cardiache	30-254 Bpm
Alimentazione	4 pile AA da 1,5V o Alimentatore esterno da 6V
Durata	48 h
Precisione di misurazione SPO2	+/- 2%
Precisione di misurazione BPM	+/- 2 Bpm
Precisione di misurazione temperatura	+/- 0,1 ° (solo LTD823)
Memoria	100 Pazienti – 300 Ore
Dimensioni	160 x 70 x37 mm
Peso	165g (senza batterie)

VARIANTI

LTD822 – Sensore compatibile BCI	LTD823 – Sensore e modulo interno NELLCOR
----------------------------------	---

ECOLOGICAL THERMOMETERS - MERCURY FREE



• 25551 ECOLOGICAL OVAL THERMOMETER - box of 12
 • 25587 SHAKER for ecological thermometers - box of 24
 Mercury free clinical thermometer with gallium alloy instead of mercury. Safe, precise and functional. Glass structure.

• 25586 ECOLOGICAL OVAL THERMOMETER with shaker - box
 • 25589 ECOLOGICAL OVAL THERMOMETER with shaker display box of 24 pcs.
 Same as 25551 but supplied with a shaker to help shake down gallium after use.

POCKET EAR THERMOMETER

• 25579 POCKET EAR THERMOMETER
 Small, easy to clean, cover free design ear thermometer. Home use.

TECHNICAL SPECIFICATIONS	
Measurement Range:	34-44 °C (93.2-111.2 °F) - ±0.2 °C (±0.4 °F)
Response time:	1-2 seconds
Battery:	Lithium 3 V (CR2032) - life approx 4,000 measurements
Size - weight:	114x35x40 mm - 35 g (including batteries)



BABY THERMOMETERS

60 SECONDS CE 0197
 FDA
 • 25555 PANDA DIGITAL THERMOMETER °C - hang box water-proof, fever alarm

30 SECONDS CE 0476
 • 25566 FROG DIGITAL THERMOMETER °C - hang box - flexible tip



WIRELESS THERMOMETER

• 25548 TEMP SITTER - baby wireless thermometer
 Accurate and innovative thin thermometer. Transmission to mother smartphone APP (iOS and Android). To be placed under baby armpit. High temp alarm can be set in the APP. Waterproof and material of safe quality. Supplied with 10 adhesives to fix thermometer to baby armpit.
 • 25547 ADHESIVE TO FIX TEMP SITTER - box of 10 - spare

TECHNICAL SPECIFICATIONS	
Battery life:	3,000 hours, not replaceable
Measurement range:	25-45 °C (±0.05 between 35-38.5 °C)
Size:	51x32x7 mm

NIPPLE-LIKE DIGITAL THERMOMETER

• 25569 NIPPLE-LIKE DIGITAL PACIFIER THERMOMETER °C
 Individually packed in cardboard box, memorizes last temperature. Auto power-off. Display range 32.0°C - 42.0°C, with accuracy ±0.1°C.
 1.5 V button battery included.



LIQUID CRYSTAL THERMOMETERS

Non toxic, mercury free, safe, unbreakable, reliable, long lasting, easy to read, liquid crystal thermometers. 10 languages manual. Made in Italy.

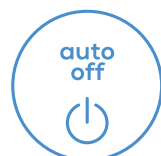
REUSABLE FOREHEAD THERMOMETERS
 • 25599 FEVERTEST - bag of 10 blister
 It indicates the normal temperature or fever in 15 seconds.
 • 25596 FEVERTEST BULK - box of 100 - hospital use
 • 25600 FEVERCONTROL - bag of 10 blister
 It indicates temperature in 15 seconds with graduation of 0.5 °C. Safe, fast, accurate, non toxic, unbreakable.
BODY TEMPERATURE MONITOR
 • 25601 48h FEVER MONITOR - bag of 10 blister of 3 pcs.
 Innovative "continual" fever indicator for 48h monitoring.



FT 09/1 Thermometer white


 german
 engineering


100% waterproof



Automatic switch off



With protective cover



Digital thermometer

Large Display

3-digit display

Audible signal when measuring stops

1 memory place

 Measurement accuracy $\pm 0.1^{\circ}\text{C}$ (between 35.5 and 42°C)

 Measurement accuracy $\pm 0.2^{\circ}\text{C}$ (between $32 - 35.4^{\circ}\text{C}$ and $42.1 - 42.9^{\circ}\text{C}$)

100% waterproof

Can be disinfected

Without glass, mercury free

Incl. 1 x 1,5V battery LR41

Battery changing indicator

Product measurements: 129 x 20 x 17 mm

Product weight: approx. 10 g (including battery)

Medical device

5 year guarantee

Sales unit: 12 / Shipping carton: 12 x 12

EAN no.: 4211125 79115 5

Item no.: 791.15

- EN** Aneroid sphygmomanometer
- F** Tensiomètre anéroïde
- ES** Tensiómetro aneroide
- P** Esfigmomanômetro aneróide

Standard gauge

Cod. **DM330**

Light-alloy Bluee painted gauge



Serie **DM350**

Matched colour cuff and bag

Light-alloy black painted gauge



Cod. **DM333**

Light-alloy Bluee painted gauge



With stethoscope

Serie **DM353**

Matched colour cuff, stethoscope and bag

Light-alloy black painted gauge



With stethoscope

Technical features

Product codes	DM330	DM333	DM350*	DM353*		
SPECIFICHE TECNICHE						
Manometer			Ø 50 mm			
Dial			Ø 45 mm			
Scale			0-300 mmHg - Graduated each 2mmHg / Smaller notch each 10 units/ bigger notch each 20 units			
Deflation time			from 260mmHg to 15 mmHg - 10 seconds			
Floating zero			the needle is not fixed on zero but it can oscillate			
Cuff			Nylon velcro cuff with metal ring			
Bulb			PVC			
Air regulation			Screw valve			
WEIGHT AND DIMENSION						
	Colours	↔ W:	↗ D:	↕ H:	Ⓚ Kg	📦 pcs
DM330	-	16 cm	11 cm	5 cm	397 g	24
DM333	-	18 cm	D: 11 cm	6 cm	474 g	24
DM350A	Bluee					
DM350F	Green	23 cm	14 cm	6 cm	448 g	50
DM350R	Red					
DM353A	Bluee					
DM353F	Green	23 cm	14 cm	6 cm	520 g	50
DM353R	Red					

SCHEDA TECNICA DI DISPOSITIVO	Rev. 03 – 10.10.2011	Modulo STD
--------------------------------------	----------------------	-------------------

DM330-3	Sfigmomanometro ad aneroide standard LOGIKO VISUAL
----------------	---

Destinazione d'uso

Dispositivo per la misurazione della pressione arteriosa.

Caratteristiche principali

Scala 0-300 mmHg. Rilascio massimo dell'aria a rubinetto chiuso: 4mmHg/minuto. Aggiustamento manuale della deflazione possibile fino a 2/3 mmHg/s. Da 260mmHg a 15mmHg tempo di deflazione massimo: 10 secondi. Scala graduata di 2mmHg in 2mmHg con tacche minori non numerate ogni 10 unità e tacche maggiori numerate ogni 20 unità. Sfondo del manometro di colore bianco, numeri blu e lancetta di colore nero. Parti metalliche cromate. Zero flottante (la lancetta non ha fermo in corrispondenza dello zero ma può oscillare liberamente). Bracciale in nylon con chiusura a velcro e anello in metallo. Monopalla in PVC con valvola di ritegno a sfera interamente in metallo cromato. Rubinetto dell'aria interamente in metallo cromato con regolazione dello sfiato dell'aria mediante valvola a vite. Ogni sfigmomanometro viene confezionato in scatola di cartone stampato.

Immagine prodotto



RIFERIMENTI FABBRICANTE

Fabbricante ai sensi 93/42	WENZHOU KANGJOU MEDICAL INSTRUMENT CO. LTD.
Paese di produzione	CINA
Classe di dispositivo 93/42	Classe I con funzione di misura
Codice di classificazione GMDN	16156
Codice di classificazione CND	C9006

CARATTERISTICHE TECNICHE

Scala	0-300 mmHg ogni 2 mmHg
Tempo di deflazione massimo	10 Sec.

MATERIALI PRINCIPALI A CONTATTO CON IL PAZIENTE

Bracciale	Nylon
Monopalla	PVC
Lattice	Assente

DIMENSIONI

Manometro	Diametro 50 mm
Bracciale	Per conferenza del braccio 26/36 Cm

VARIANTI

DM330 – Senza fonendoscopio	DM333 – Con fonendoscopio
DM331 – Con bracciale senza D/RING	DM332 – Versione bambini



BM 55

beurer
medical

BM 55 Blood pressure monitor

 german
engineering



With cuff for upper arm circumferences from 22 - 42 cm



For innovative networking between the blood pressure monitor and "beurer HealthManager" PC software



Resting indicator* for exact measurement result



Fully automatic blood pressure and pulse measurement on the upper arm

Risk indicator: Classification of measurements with coloured scale

Arrhythmia detection: Warning in case of possible heart rhythm disturbances

Two user memories for 60 measured values each

Average value of all stored measurements and morning and evening blood pressure for the last 7 days

Easy to use via sensor touch buttons

White illuminated, easy-to-read XL display

Can be used with mains part

Date and time

Automatic switch-off

Signal in case of application error

Automatic pressure preselection and deflation

USB cable, 4 x 1,5V AAA batteries and storage pouch included

Medical device

Mains part available separately: Item no. 071.60

Product measurements (LxWxH): 186 x 95 x 56 mm

Product weight: approx. 467 g (with cuff, without batteries)

5 year guarantee

Sales unit: 4 / Shipping carton: 4 x 4

EAN no.: 4211125 65807 6

Item no.: 658.07

658.07_BM55_2018-05-09_01_DS_EN_BEU Subject to errors and changes



Sensor touch

- Easy to use via sensor touch buttons

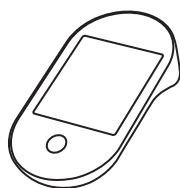


Mains part ready

- For optional operation of the device with separately available mains part



CONNECTION



Innovative networking between the blood pressure monitor and the "beurer HealthManager" PC software with USB cable included - keep track of your measurements.



* tested online application "beurer HealthManager" Cloud
Can only be used with its full functionality with the „beurer HealthManager“ software.