

**RT<sup>®</sup>ED**  
**SUTURE**



**山东海迪科医用制品有限公司**  
SHANDONG HAI DI KE MEDICAL PRODUCTS CO.,LTD.

Add: Plant No. 1, Science and Technology Enterprise Incubator Park,  
Shan County, Heze City, Shandong Province, China  
Tel: +86-530-4660062  
Fax: +86-530-4660055  
Mobile: +86-13105409308  
E-mail: [info@suturescn.com](mailto:info@suturescn.com)  
Web: [www.suturescn.com](http://www.suturescn.com)

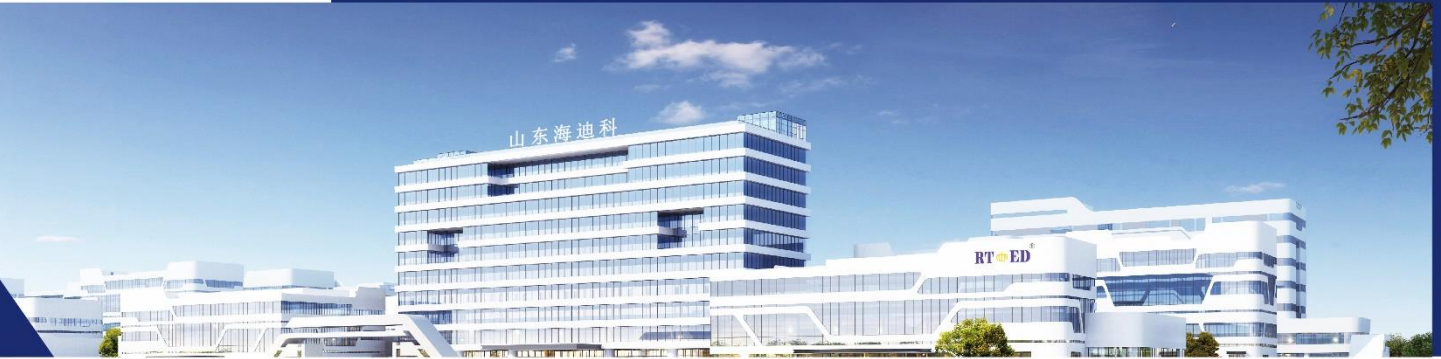


**SHANDONG HAI DI KE MEDICAL PRODUCTS CO.,LTD.**

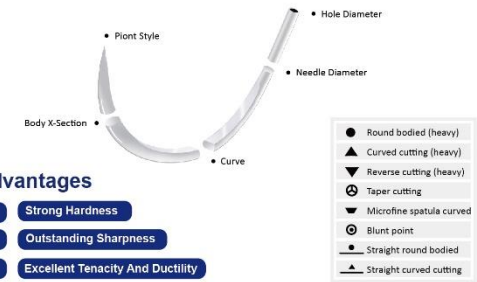
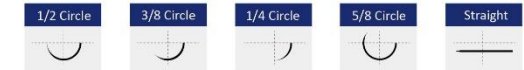
山东海迪科医用制品有限公司

Shandong Haidike Medical Products Co., Ltd. is a leading and world famous medical devices manufacturer with CE, ISO, FSC, CFDA and FDA certificates. RTMED has registered as Madrid trademark. We have established good cooperation with Tsinghua University and Shandong Academy of Sciences, having great R & D center and research team. Our products are sold in over 100 countries.

- ◆ Absorbable surgical sutures approved by CE certificate
- ◆ NO.1 catgut suture plant in the world
- ◆ Lifting Threads for Beauty, Cosmetic
- ◆ Orthopedic casting tapes & splints
- ◆ Medical protection products
- ◆ Electric Wheelchair & Manual Wheelchair
- ◆ Pet Food, Vet Suture



Needle Shapes



Advantages

- 1 Strong Hardness
- 2 Outstanding Sharpness
- 3 Excellent Tenacity And Ductility



## PGA POLYGLYCOLIC ACID

### Properties:

Structure: Multifilament, Braided  
 Colour: Violet, Undyed  
 Chemical composition: Polyglycolic acid  
 Coating: Polycaprolactone + Calcium Stearate  
 Sizes: USP 8/0 - USP 4  
 Type of absorption: Hydrolysis  
 Sterilization: Ethylene Oxide  
 Absorption: 60 - 90 days

### Advantages:

- High initial tensile strength
- Excellent knotting ability
- Reliable absorbability
- Easy to handle
- Outstanding holding power through the critical wound periode
- Smooth surface, slides smoothly through the tissue



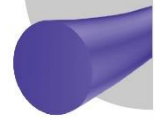
## PDO POLYDIOXANONE

### Properties:

Structure: Monofilament  
 Colour: Violet, Undyed  
 Chemical composition: Poly (p-dioxanone)  
 Sizes: USP 7/0 - USP 2  
 Type of absorption: Hydrolysis  
 Sterilization: Ethylene Oxide  
 Absorption: 180 - 210 days

### Advantages:

- High initial tensile strength
- Prolonged wound support
- Minimal tissue reaction
- Lower incidence of infection and trauma due to smooth surface



## PGLA POLYGLACTIN 910

### Properties:

Structure: Multifilament, Braided  
 Colour: Violet, Undyed  
 Chemical composition: Poly(glycolide-co-l-lactide 90/10)  
 Coating: Poly(glycolide-co-l-lactide 30/70) + Calcium Stearate  
 Sizes: USP 8/0 - USP 2  
 Type of absorption: Hydrolysis  
 Sterilization: Ethylene Oxide  
 Absorption: 56 - 70 days

### Advantages:

- High tensile strength
- Smooth tissue passage
- Easy knotting and tie down
- Excellent knot security
- Reliable absorbability



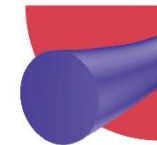
## PGCL POLIGLECAPRONE 25

### Properties:

Structure: Monofilament  
 Colour: Violet, Undyed  
 Chemical composition: Poly (glycolide-co-caprolactone)  
 Sizes: USP 6/0 - USP 2  
 Type of absorption: Hydrolysis  
 Sterilization: Ethylene Oxide  
 Absorption: 90 - 120 days

### Advantages:

- High initial tensile strength
- Easy handling
- Smooth passage through tissue
- Excellent knotting ability



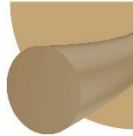
## CHROMIC CATGUT

### Properties:

Colour: Dark brown  
 Composition: Purified connective tissue  
 Sizes: USP 7/0 - USP 4  
 Type of absorption: Proteolysis  
 Sterilization: Gamma radiation  
 Absorption: 90 - 100 days

### Advantages:

- High tensile strength
- Excellent handling properties
- Minimal tissue reaction
- Uniform absorption



## PLAIN CATGUT

### Properties:

Colour: Beige  
 Composition: Purified connective tissue  
 Sizes: USP 7/0 - USP 4  
 Type of absorption: Proteolysis  
 Sterilization: Gamma radiation  
 Absorption: 60 - 70 days

### Advantages:

- High tensile strength
- Smooth tissue passage
- Easy knotting and tie down
- Excellent knot security
- Reliable absorbability



## SILK

### Properties:

Structure: Braided  
 Colour: Black, White  
 Composition: Natural silk filaments  
 Coating: Silicon / wax  
 Sizes: USP 8/0 - USP 4  
 Sterilization: Ethylene Oxide

### Advantages:

- Excellent handling properties
- High tensile strength
- Highly smooth and flexible
- Good knot security



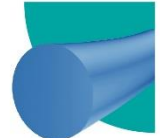
## POLYPROPYLENE

### Properties:

Structure: Monofilament  
 Colour: Blue  
 Chemical composition: Polypropylene  
 Sizes: USP 7/0 - USP 3  
 Sterilization: Ethylene Oxide

### Advantages:

- High tensile strength
- Smooth tissue passage
- Easy and secure knotting
- Minimal acute inflammatory reaction in tissues
- Excellent and permanent tissue support



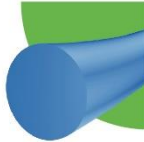
## NYLON

### Properties:

Structure: Monofilament  
 Colour: Blue, Black  
 Chemical composition: polyamide 6 - 6.6  
 Sizes: USP 12/0 - USP 4  
 Sterilization: Ethylene Oxide

### Advantages:

- High tensile strength
- Smooth tissue passage
- Easy and secure knotting
- Excellent and permanent tissue support



## POLYESTER

### Properties:

Structure: Braided  
 Colour: Green, White  
 Chemical composition: Polyethylene terephthalate  
 Coating: Silicon  
 Sizes: USP 6/0 - USP 4  
 Sterilization: Ethylene Oxide

### Advantages:

- High tensile strength
- Excellent handling properties
- Minimal tissue reaction
- Good knot security



## PTFE

### Properties:

Structure: Monofilament  
 Colour: White  
 Chemical composition: polytetrafluoroethylene  
 Sizes: USP 2/0 - 5/0  
 Sterilization: Ethylene Oxide

### Advantages:

- High tensile strength; does not weaken when moistened.
- Decreased inflammation and faster wound repair.
- Soft; comfortable for patients.
- Great handling properties and knot security.



THREADS

NEEDLES

THREADS TYPE	THREADS DIAMETER		THREADS LENGTH		NEEDLES
	USP	mm	cm	mm	
POLYGLYCOLIC ACID (size: 5-8/0)	PGA	10	15cm	A	● 1/2 circle round bodied 01
POLYGLYCOLIC ACID RAPID (size: 5-8/0)	PGAR	90	30cm	B	● 3/8 circle round bodied 02
POLYGLYCOLIC ACID PLUS (size: 5-8/0)	PGA+	80	45cm	C	▲ 1/2 circle curved cutting 03
POLYGLACTIN 910 (size: 2-8/0)	PGLA	70	60cm	D	▲ 3/8 circle curved cutting 04
POLYGLYGLACTIN 910 RAPID (size: 2-8/0)	PGLAR	60	70cm	E	▼ 1/2 circle reverse cutting 05
POLYGLYGLACTIN 910 PLUS (size: 2-8/0)	PGLA+	50	75cm	F	▼ 3/8 circle reverse cutting 06
POLYDIOXANONE (size: 2-7/0)	PDO	40	90cm	G	● straight round bodied 07
POLYDIOXANONE RAPID (size: 2-7/0)	PDOR	30	100cm	H	▲ straight curved cutting 08
POLYDIOXANONE PLUS (size: 2-7/0)	PDO+	20	125cm	I	⊕ 1/2 circle taper cutting 09
CHROMIC CATGUT (size: 4-7/0)	CC	00	150cm	J	⊕ 3/8 circle taper cutting 10
PLAIN CATGUT (size: 4-7/0)	PC	01	180cm	K	● blunt point 11
POLIGLECAPRONE 25 (size: 2-6/0)	PGCL	02	200cm	L	▼ 1/2 circle spatula curved 12
POLIGLECAPRONE 25 RAPID (size: 2-8/0)	PGCLR	03	250cm	M	▼ 3/8 circle spatula curved 13
POLIGLECAPRONE 25 PLUS (size: 2-6/0)	PGCL+	04	300cm	N	● 1/4 circle round bodied 14
SILK (size: 4-6/0)	SK		400cm	O	● 1/2 circle round bodied heavy 15
NYLON (size: 4-12/0)	NL		50cm	P	● without needle 16
POLYPROPYLENE (size: 3-7/0)	PP				● double needle -2
POLYESTER (size: 4-7/0)	PB				

PGA	20	F	01	-2
PGA20F0126-2				
Polyglycolic Acid 2/0 75mm 1/2 circle round bodied double needles 26mm				

## Lifting Threads Needle

**SHARP** Basic type, generally used for linear filling and simple lifting, Beginners can also operate effortlessly.

**L TYPE** L type blunt needle, reduce the damage of blood vessels, bruising and hematoma. The pain was significantly reduced.

**W TYPE** Circular head, reducing the damage to the skin tissue. After the injection, the needle can be taken out then correct the position and depth of the needle, which improves the lack of a stitch of the other types.

**U-COG** Double needle is used for eyebrow lifting and other parts requiring strong lifting. U-COG is a special structure line with strong lifting ability. The local lifting effect is almost as good as the little facelift.

## PDO/PCL Lifting Thread

**Mono**  
**Needle** Sharp Needle  
**Parts** Face, Body  
**Effects** Tightening, Filling, Wrinkles Removing, Whitening

**Tornado Screw**  
**Needle** Sharp Needle  
**Parts** Eye, Neck, Crow's Feet, Cheek  
**Effects** Tightening, Filling, Whitening, Wrinkles Removing

**KONK**  
**Needle** L type Blunt Needle  
**Parts** Nasal columella, Nasal bridge  
**Effects** Rhinoplasty, Nose Shaping

**COG Lifting**  
**Needle** L/W type Blunt Needle  
**Parts** Lifting Eyebrow, Apple Zone, Cheek, Chest  
**Effects** Face Lifting, V Face, Chest Lifting

**Multi Threads**  
**Needle** L type Blunt Needle  
**Parts** Face, Neck, Eye Bag, Crow's Feet  
**Effects** Tightening, Filling, Whitening, Wrinkles Removing

**Molding COG**  
**Needle** W type Blunt Needle  
**Parts** Face, Neck, Crow's Feet, Eye Bag  
**Effects** Tightening, Filling, Whitening, Wrinkles Removing

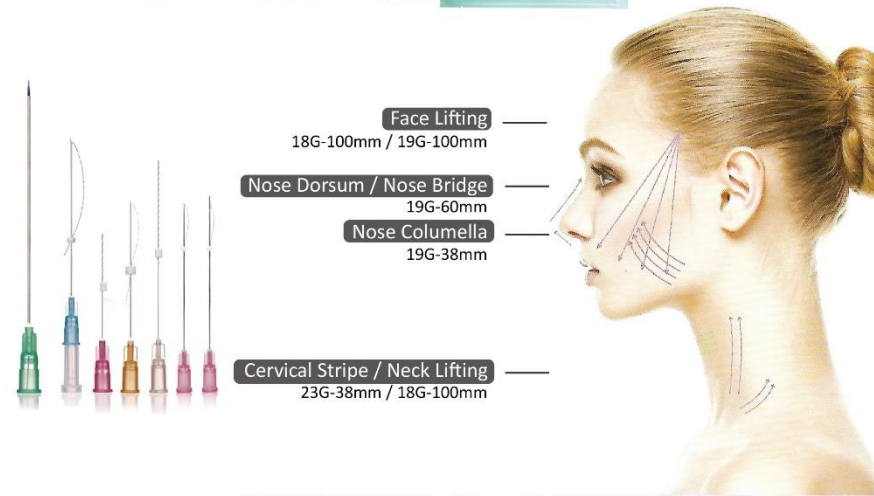


**Forehead**  
Multi Threads / Tornado Screw / Mono Screw

**Crow's feet / Eye bags / Eye Corner's Lifting**  
Blunt Needle For Eye 30G-25mm

**Apple Zone**  
Multi Threads / Tornado Screw / Mono Screw

**Nasolabial folds / Mouth Corner's Lifting**  
Multi Threads / Tornado Screw / Mono Screw



**Face Lifting**  
18G-100mm / 19G-100mm

**Nose Dorsum / Nose Bridge**  
19G-60mm

**Nose Columella**  
19G-38mm

**Cervical Stripe / Neck Lifting**  
23G-38mm / 18G-100mm

## Medical Cooling Gel Patch



### Usage Method

**Step one:** Thoroughly clean facial skin before using facial mask.

**Step two:** Remove the facial mask, spread it on the face and adjust it to the skin.

**Step three:** Apply for 15-20 minutes, so that the skin can absorb the essence of the facial mask.

**Step four:** Remove the facial mask, gently massage the face with the fingers, absorb the residual essence, and clean the face.

## Hyaluronic Acid Hydrating Mask



Net : 25ml  
Silk membrane cloth

## Peptide Repair Lyophilized Powder



① Peptide element repair lyophilized powder  
② Peptide element requiring solvent

**Step one:** Open the aluminum cover and rubber plug.

**Step two:** Pour bottle ② of liquid into bottle ①.

**Step three:** Put on the dropper and shake the liquid in bottle ① evenly.

**Step four:** Squeeze the dropper, take a proper amount of liquid and evenly smear it on the face.

## Skin Care Products



Mild Cleaning Foam	150mL
Soothing Moisturizing Toner	120mL
Moisturizing Repairing Lotion	100mL
Brightening Recovery Essence	40mL
Multi-effect Nourishing Repairing Cream	50g

## Hernia Repair Mesh



### Large mesh aperture

Promotes liquid circulation and smoothes tissue growth.

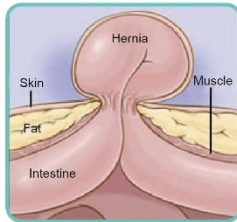
### Less micropores

Greatly reduces the possibility of bacteria hiding and is not easy to infect.

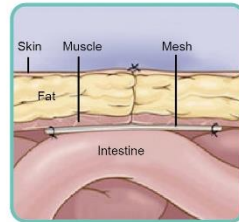
### Light weight

Reduce postoperative pain and foreign body sensation.

Hernia Example



After Mesh Repair



## Disposable Surgical Face Masks



### 3 Ply Flat type Ear Loop EN 14683:2019 Type IIR

Name	Parameter
Size	17.5 cm x 9.5 cm
Material	Polypropylene spunbond nonwoven fabric, polypropylene melt-blown nonwoven, metal wire with plastic covering nose clip, polyester/nylon spandex blend ear loops
Product performance:	The bacterial filtration efficiency of the mask should be not less than 98%.
Application	It is worn by clinical staff during non-invasive procedures, covering the user's mouth, nose, and jaw, providing a certain physical barrier to prevent direct penetration of pathogenic microorganisms, particulate matter, in patients, etc.
Expiration date	2 years after production
Storage	Store at room temperature, the relative humidity should not exceed 80%, non-corrosive gas and well-ventilated room. Transportation means should be clean and isolated from fire sources.



### 3 Ply Flat type Ear Loop EN 14683:2019 Type IIR

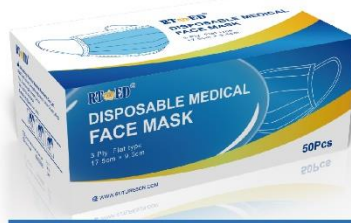
Name	Parameter
Size	14.5 cm x 9.5 cm
Material	Polypropylene spunbond nonwoven fabric, polypropylene melt-blown nonwoven, metal wire with plastic covering nose clip, polyester/nylon spandex blend ear loops
Product performance:	The bacterial filtration efficiency of the mask should be not less than 98%.
Application	It is worn by clinical staff during non-invasive procedures, covering the user's mouth, nose, and jaw, providing a certain physical barrier to prevent direct penetration of pathogenic microorganisms, particulate matter, in patients, etc.
Expiration date	2 years after production
Storage	Store at room temperature, the relative humidity should not exceed 80%, non-corrosive gas and well-ventilated room. Transportation means should be clean and isolated from fire sources.



# Disposable Medical Face Mask



3 Ply Flat type Ear Loop EN 14683:2019 Type I	
<b>Name</b>	<b>Parameter</b>
Size	17.5 cm x 9.5 cm
Material	Polypropylene spunbond nonwoven fabric, polypropylene melt-blown nonwoven, metal wire with plastic covering nose clip, polyester/nylon spandex blend ear loops
Product performance:	The bacterial filtration efficiency of the mask should be not less than 95%.
Application	It is worn by clinical staff during non-invasive procedures, covering the user's mouth, nose, and jaw, providing a certain physical barrier to prevent direct penetration of pathogenic microorganisms, particulate matter, in patients, etc.
Expiration date	2 years after production
Storage	Store at room temperature, the relative humidity should not exceed 80%, non-corrosive gas and well-ventilated room. Transportation means should be clean and isolated from fire sources.



3 Ply Flat type Ear Loop EN 14683:2019 Type IIR	
<b>Name</b>	<b>Parameter</b>
Size	17.5 cm x 9.5 cm
Material	Polypropylene spunbond nonwoven fabric, polypropylene melt-blown nonwoven, metal wire with plastic covering nose clip, polyester/nylon spandex blend ear loops
Product performance:	The bacterial filtration efficiency of the mask should be not less than 98%.
Application	It is worn by clinical staff during non-invasive procedures, covering the user's mouth, nose, and jaw, providing a certain physical barrier to prevent direct penetration of pathogenic microorganisms, particulate matter, in patients, etc.
Expiration date	2 years after production
Storage	Store at room temperature, the relative humidity should not exceed 80%, non-corrosive gas and well-ventilated room. Transportation means should be clean and isolated from fire sources.



3 Ply Flat type Ear Loop EN 14683:2019 Type I	
<b>Name</b>	<b>Parameter</b>
Size	14.5 cm x 9.5 cm
Material	Polypropylene spunbond nonwoven fabric, polypropylene melt-blown nonwoven, metal wire with plastic covering nose clip, polyester/nylon spandex blend ear loops
Product performance:	The bacterial filtration efficiency of the mask should be not less than 95%.
Application	It is worn by clinical staff during non-invasive procedures, covering the user's mouth, nose, and jaw, providing a certain physical barrier to prevent direct penetration of pathogenic microorganisms, particulate matter, in patients, etc.
Expiration date	2 years after production
Storage	Store at room temperature, the relative humidity should not exceed 80%, non-corrosive gas and well-ventilated room. Transportation means should be clean and isolated from fire sources.



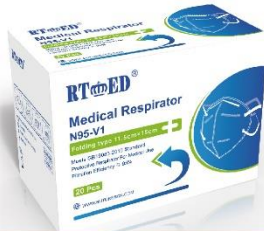
5 Ply Folding type EN 14683:2019 Type IIR	
<b>Name</b>	<b>Parameter</b>
Size	11.5 cm x 15 cm
Material	Polypropylene spunbond nonwoven fabric, polypropylene melt-blown nonwoven, nose clip, polyester/nylon spandex blend ear loops
Product performance:	The bacterial filtration efficiency of the mask should be not less than 98%.
Application	It is worn by clinical staff during non-invasive procedures, covering the user's mouth, nose, and jaw, providing a certain physical barrier to prevent direct penetration of pathogenic microorganisms, particulate matter, in patients, etc.
Expiration date	2 years after production
Storage	Store at room temperature, the relative humidity should not exceed 80%, non-corrosive gas and well-ventilated room. Transportation means should be clean and isolated from fire sources.



### 3 Ply Cup type Head Loop EN14683:2019 Type IIR



Name	Parameter
Size	13.5 cm x 13.5 cm
Material	Polypropylene spunbond nonwoven fabric, polypropylene melt-blown nonwoven, nose clip, polyester/nylon spandex blend ear loops
Product performance:	The bacterial filtration efficiency of the mask should be not less than 98%.
Application	It is worn by clinical staff during non-invasive procedures, covering the user's mouth, nose, and jaw, providing a certain physical barrier to prevent direct penetration of pathogenic microorganisms, particulate matter, in patients, etc.
Expiration date	2 years after production
Storage	Store at room temperature, the relative humidity should not exceed 80%, non-corrosive gas and well-ventilated room. Transportation means should be clean and isolated from fire sources.



### 5 Ply Folding type Head Loop N95-V1



Name	Parameter
Size	11.5 cm x 15 cm
Material	Polypropylene spunbond nonwoven fabric, polypropylene melt-blown nonwoven, nose clip, polyester/nylon spandex blend ear loops
Product performance:	The bacterial filtration efficiency of the mask should be not less than 95%.
Application	It is worn by clinical staff during non-invasive procedures, covering the user's mouth, nose, and jaw, providing a certain physical barrier to prevent direct penetration of pathogenic microorganisms, particulate matter, in patients, etc.
Expiration date	11 months after production
Storage	Store at room temperature, the relative humidity should not exceed 80%, non-corrosive gas and well-ventilated room. Transportation means should be clean and isolated from fire sources.

## Medical Goggle



<b>Model specifications</b>	<input type="checkbox"/> White <input type="checkbox"/> Black <input type="checkbox"/> Transparent <input type="checkbox"/> Large <input type="checkbox"/> Medium <input type="checkbox"/> Small
<b>Product description</b>	It is composed of a protective cover made of polymer material, a foam strip and a fixing device. Non-sterile, single use.
<b>Expiration date</b>	3 years after production
<b>Storage</b>	This product should be stored in a dry, ventilated, non-corrosive gas warehouse.

## Medical Isolation Mask



### Model: Ear hook type / Headband type

EN166:2001  
EN167:2002



<b>Product description</b>	It is composed of a protective cover made of polymer material, a foam strip and a fixing device. Non-sterile, single use.
<b>Expiration date</b>	3 years after production
<b>Storage</b>	This product should be stored in a dry, ventilated, non-corrosive gas warehouse.

## Isolation Gown



Measurement deviation ±2cm

### Isolation Gown - TYPE A



Isolation gowns - type A Specifications: 120cm×120cm

**Material** 100% Non-woven fabric

**Product description** Non-woven fabrics are usually used as the main raw materials, which are made by cutting and sewing. Non-sterile, single-use.

**Expiration date** 3 years after production

**Storage** This product should be stored in a dry, ventilated, non-corrosive gas warehouse.

## Isolation Gown

- Good air permeability
- Strong barrier performance
- Non-sterile
- Do not reuse



100% Non-woven fabric



zipper



Elastic cuffs

### Isolation Gown - TYPE B



Isolation gowns - type B Specifications: One-size-fits-all

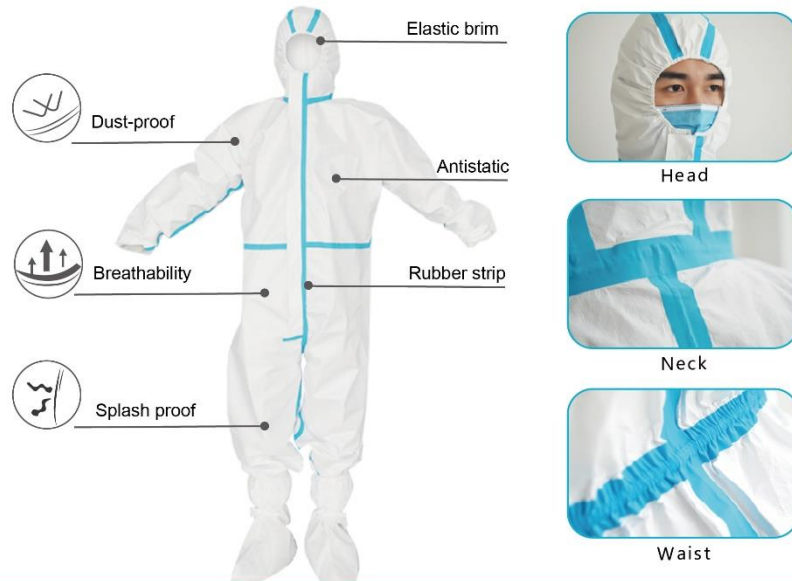
**Material** 100% Non-woven fabric

**Product description** Non-woven fabrics are usually used as the main raw materials, which are made by cutting and sewing. Non-sterile, single-use.

**Expiration date** 3 years after production

**Storage** This product should be stored in a dry, ventilated, non-corrosive gas warehouse.

## Medical Disposable Protective Clothing



Executive Standard: GB 19082-2009 EN 14126:2003



Specifications: One-piece Sizes: □ 160 □ 165 □ 170 □ 175 □ 180 □ 185

### Raw materials of Components:

Items No.	Components	Raw materials
1	Fabrics	PP+PE (Polypropylene + polyethylene breathable membrane) composite material
2	Rubber strip	EVA low temperature glue, polymer basic cloth

**Intended use:** It is used to provide barrier and protection for the potentially infectious patients' blood, body fluids, secretions, etc. that clinical medical personnel come into contact with at work. It cannot be used to isolate places with strict microbiological index control requirements such as intensive care unit (room).

**Expiration date** 2 years after production

**Storage:** Store at room temperature, in non-corrosive gas, dry, avoid the sunlight, good ventilation, clean environment, away from fire.

WWW.HDKSUTURE.COM

## Surgical Gowns



CE BS EN 13795-1:2019



Model: □S □M □L □XL □XXL □XXXL □XXXXL

Specifications: □High performance type □Standard type

**Material** 100% Non-woven fabric

**Intended use** For the surgical staff to wear, reduce the source of infection to the patient's surgical wound to prevent postoperative wound infection.

**Expiration date** 3 years after production

**Storage** Store in an environment with relative humidity not exceeding 80%, no corrosive gas, cool, dry, well ventilated and clean.

WWW.SUTURESCN.COM

## Medical Isolation Shoe Cover



size: Long Short    Style: Non-woven fabric PVC PP+PE

<b>Product description</b>	Made of suitable materials, with sufficient strength and barrier properties. Non sterile.
<b>Expiration date</b>	3 years after production
<b>Storage</b>	Store in an environment with relative humidity not exceeding 80%, no corrosive gas, cool, dry, well ventilated and clean.
Medical isolation shoe cover	Long-style / Short-style    Blue / White    FZ/T64005-2011

## Medical Cap

**Model specifications** Round cap. φ25.5cm    FZ/T64005-2011

**Product description** Non-woven fabric is usually used as the main raw material, which is made by cutting and sewing. Non-sterile, single-use.

**Material** Non-woven fabric PP+PE

**Colour** Blue

**Storage** This product should be stored in a dry, ventilated, non-corrosive gas warehouse.



## Medical Scrubs Uniforms



Model: type A: split type; type B: gown type.



**Specifications** S M L XL XXL

**Product Description** Usually made of cotton fiber or non-woven fabric. The medical scrubs uniforms is short-sleeve or long-sleeve style that have the function of blocking dandruff, and do not have liquid barrier properties. It is non-sterile supply and can be reused. It should be sterilized before using.

**Expiration date** 3 years after production

**Storage** The product should be stored in a clean warehouse without corrosive gas, well ventilated, cool and dry.

## Medical Bed Sheet



**Materials: 70% Polypropylene, 30% Polyethylene non-woven fabric**

<b>Product description</b>	It is made by compounding or sewing non-woven fabric and plastic film. Non-sterile, single use.
<b>Expiration date</b>	3 years after production
<b>Storage</b>	This product should be stored in a dry, ventilated, non-corrosive gas warehouse.



## Disposable Virus Specimen Collection Tube



Disposable sampler

**Model: Inactivated and non-inactivated**



<b>Product description</b>	Disposable virus specimen collection tube is composed of swabs and/or collection cups and tubes containing storage solution. Non-sterile.
<b>Expiration date</b>	12 months
<b>Storage</b>	The product should be stored in a non-corrosive gas and well-ventilated warehouse at room temperature.

### Medical examination gloves



**Model/Specification:** According to the different materials used, it is divided into: polyvinyl chloride, butyronitrile; according to the size, it is divided into: XS, S, M, L, XL.

**Product Description:** Usually made of materials such as polyvinyl chloride. Have sufficient strength and barrier properties. Non-sterile supply, single use.

**Intended use:** It will be wore by doctor to do checking for the patients or lab testing.

### Medical rubber gloves



**Model/Specification:** XS, S, M, L, XL.

**Product Description:** Usually made of materials such as polyvinyl chloride and rubber. Have sufficient strength and barrier properties. Non-sterile supply, single use.

**Intended use:** It will be wore by doctor to do checking for the patients or lab testing.

## Orthopedic Casting Tape



### USE INSTRUCTION

- Apply 1~2 layers stockinet over the affected body part;
- Wear surgical gloves;
- Choose proper size orthopedic casting tape, then open the package;
- Immerse the casting tape in normal temperature(20℃~30℃) water for 5~6 seconds and squeeze 2~3 times. Then remove from the water and squeeze out the excess water. The curing time of orthopedic casting tape is directly related to the temperature of water. The curing time is shorter in high temperature water than in low temperature water. If the water temperature is over 27℃, the curing time is too short to increase the difficulty of the operation.
- Wrap the casting tape spirally around the affected body part, overlapping the previous layer by one-half or two-thirds the width of the tape. The tension is moderate. If it is too loose, it will weaken the adhesion of the orthopedic casting tape. If it is too tight, it will affect the blood circulation.
- The intensity of the casting tape is related to the number of overlapped layers. Overlap 3~4 layers for the non-weight bearing parts, while overlap 5~6 layers for the weight bearing parts. If more layers are needed, please ensure the adhesivity between the layers.
- To increase the adhesion between layers, the casting tape will be shaped after wrapped. The operating time should be in 3~5 minutes. The adhesion and shaping effect cannot reach the best if the operating time is longer or the immersed time is too long. The patients do not allow to move freely in 10 minutes before the orthopedic casting tape are completely hardened.
- The electric plaster saw is needed if the affected parts need to open a window or remove the orthopedic casting tape.

Orthopedic Casting Tape				
Product Description	Sizes	Specification(W×L)	Packaging	Operating Part
Fiberglass Orthopedic Casting Tape	RT002	5.0cm × 360cm	10bags/box 12boxes/ctn	Wrists/Childrens
Fiberglass Orthopedic Casting Tape	RT003	7.5cm × 360cm	10bags/box 12boxes/ctn	Arms
Fiberglass Orthopedic Casting Tape	RT004	10.0cm × 360cm	10bags/box 12boxes/ctn	Arms / Legs
Fiberglass Orthopedic Casting Tape	RT005	12.5cm × 360cm	10bags/box 9boxes/ctn	Legs
Fiberglass Orthopedic Casting Tape	RT006	15.0cm × 360cm	10bags/box 9boxes/ctn	Legs

## Polymer Splint

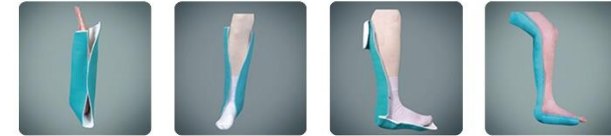


Wrist Fixation  
Recommended sizes:  
312 (7.5cmX30cm)  
415 (10cmX40cm)

Thumb Fixation  
Recommended sizes:  
312 (7.5cmX30cm)  
415 (10cmX40cm)

The Fourth and Fifth Finger Fixation  
Recommended sizes:  
312 (7.5cmX30cm)  
415 (10cmX40cm)

Elbow Fixation  
Recommended sizes:  
312 (7.5cmX30cm)  
415 (10cmX40cm)



Forearm Fixation  
Recommended sizes:  
335 (7.5cmX90cm)  
430 (10cmX75cm)

Horseshoe Fixation  
Recommended sizes:  
335 (7.5cmX90cm)  
430 (10cmX75cm)

Ankle Fixation  
Recommended sizes:  
430 (10cmX75cm)  
530 (12.5cmX75cm)

Legs Fixation  
Recommended sizes:  
335 (7.5cmX90cm)  
545 (12.5cmX115cm)

### Polymer splint

Product Description	Sizes	Specification(W×L)	Packaging	Operating part
Medical Polymer Splint	312	7.50cmX30cm	20bags/box 6boxes/ctn	wrists/Childrens
Medical Polymer Splint	335	7.50cmX90cm	10bags/box 6boxes/ctn	arms/legs
Medical Polymer Splint	415	10.0cmX40cm	15bags/box 6boxes/ctn	arms/legs
Medical Polymer Splint	430	10.0cmX75cm	10bags/box 6boxes/ctn	legs
Medical Polymer Splint	530	12.5cmX75cm	10bags/box 6boxes/ctn	legs
Medical Polymer Splint	545	12.5cmX115cm	5bags/box 6boxes/ctn	legs
Medical Polymer Splint	630	15.0cmX75cm	10bags/box 6boxes/ctn	legs
Medical Polymer Splint	645	15.0cmX115cm	5bags/box 6boxes/ctn	legs



Tissue Scissors



Stitch Scissors



Umbilical Scissors



Hemostatic Forceps



Tissue Forceps



Needle Forceps



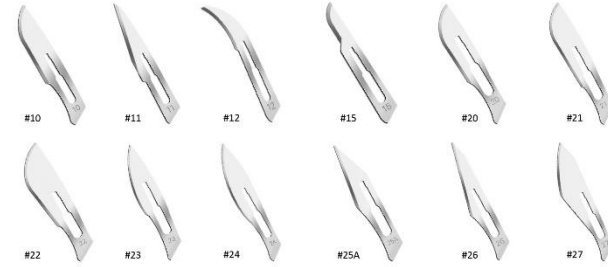
Edison Forceps



Dissecting Forceps



Dressing Forceps



Surgical Blade



Scalpel 3#



Scalpel 4#



Scalpel 7#



Bone Hook





Skin Retractor



Surgery Suction Pipe



## Electric Wheelchair

Front wheel size: 10 inches	Net weight: 47kg (actually prevail)
Rear wheel size: 16 inches	Maximum speed: 6km/h
Dimensions: 1180×630×1360mm	Theoretical travel: 15km
Safe load: 100kg	Motor (motor): DC24V250W*2pcs
Frame material: Carbon steel	Gradeability (gradient): 8 degrees
Battery: Standard	






Front wheel size: 8 inches	Net weight: 21.5kg (actually prevail)
Rear wheel size: 12 inches	Maximum speed: 6km/h
Dimensions: 990×590×950mm	Theoretical travel: 15km
Safe load: 100kg	Motor (motor): DC24V250W*2pcs
Frame material: Aluminum alloy	Gradeability (gradient): 6 degrees
Battery: 12AH/20AH lithium battery	Folding size: 765×590×350mm

## Manual Wheelchair






Front wheel size: 7 inches	Net weight: 18kg (actually prevail)
Rear wheel size: 24 inches	Armrest: blow molding/leather
Dimensions: 950×680×900mm	Seat width: 460mm
Safe load: 100kg	Seat height: 520mm
Frame material: Aluminum alloy	
Tire: solid tire	






Front wheel size: 6 inches	Net weight: 7.2kg (actually prevail)
Rear wheel size: 8 inches	Armrest: blow molding/leather
Dimensions: 1000×500×910mm	Seat width: 340mm
Safe load: 100kg	Seat height: 490mm
Frame material: Aluminum alloy	Backrest height: 410mm
Folding size: 220×500×700mm	

## Seniors Shopping Cart

A good helper for parents in life



**Tie-rod brake design**



**Comfortable seat**



**Wear-resistant reinforced brake rear wheel**



## New Generation Multi-claw Crutches

Material upgrade



**Smooth all the way**

- Anti-stumbling design
- Steady walk without hindrance
- The inside and outside width design is balanced and stable.



**Feel comfortable**

- High wear-resistant handrail
- Surface cracked anti-skid treatment, anti-skid and wear-resistant. Ergonomic design. Fits to the hand without getting tired from holding for a long time.



**Firmer and stronger**

- 1.2mm wall thickness Thicken reinforcement
- Lightweight and load-bearing



**Firm and convenient**

- Annular clavicle clamp
- Fixed main pole Three simple steps



## Medical Grade Crutches

Stable and non-slip height adjustable



**PE environmentally friendly foam material arm rest**

Thick PE foam material, high resilience, non-slip, soft and comfortable, strong abrasion resistance, not tired after long-term use.



**Leg height adjustment in 9 positions**

The height of 9 levels is adjustable to meet the needs of people of different heights. Strengthen the aluminum alloy to provide super good support.



**Grip three-position adjustment**

The grip has three gears adjustment, the adjustment part is locked firmly and stably, and it is convenient to use and feel comfortable and soft



**Non-slip durable rubber pad**

The rubber pad is made of rubber, which is thicker, stable and non-slip, and the built-in metal gasket is wear-resistant and durable



## Nursing Bed

Bent leg angle: -45~25°

Back angle: 0~80°

Rollover angle: 0~55°

Toilet hole size: 280×215mm

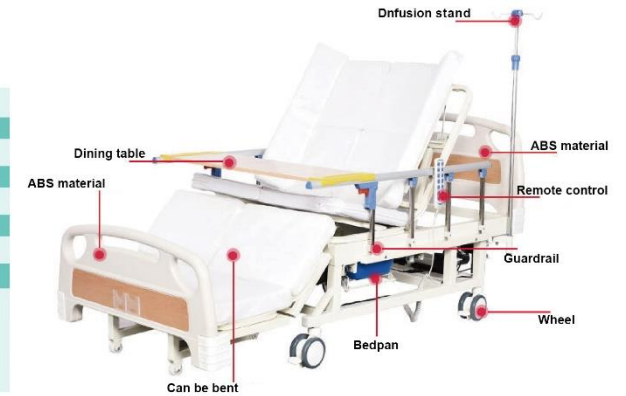
Product Size: 2100×900×550mm

Bed size: 1970×900mm

Bed material: Thickened steel pipe

For people: Elderly, paralyzed patients, etc

Product accessories: Wash basin, infusion stand, mattress, dining table, guardrail, castor, bedpan





## Cassette Sutures

Length	25m 50m 75m 100m
Absorbable	Chromic catgut, Plain catgut PGA, PGLA, PDO
Non-absorbable	Silk, Nylon, Polyester, Polypropylene



## Suture Materials



## Self-adhesive Elastic Bandage

Standard	Features
5.0cm×450cm	Self-adhesive
7.5cm×450cm	High elasticity
10cm×450cm	Waterproof
15cm×450cm	Easy to tear

## Milkshake



## Pet Staple Food



## Cat Food / Dog Food



# Acupoint Pressure Stimulation Patch



Specification model:  $\phi 7\text{cm} \times 1\text{paste} \times 40\text{paste}$ , paste core  $\phi 3\text{cm}$

Product description: This product is composed of spheres and medical tape. It is attached to acupuncture points of the human body and only exerts pressure stimulation by external force.

Intended use: It is used to stick to acupuncture points of the human body for external stimulation. Non-invasive.

# Nasal Irrigator



Press once to release the water



Press again to stop the water

