



优贝特简介 ABOUT YOUTBETTER >>

苏州优贝特医疗器械有限公司是一家集研发、制造、销售为一体的专业化医疗器械产品制造企业。公司占地面积60余亩，建筑面积达3万多平方米。

公司建成了具有国际一流水平的研发团队，目前已设立了健全的产品研发体系，拥有国际先进的研发装备和项目管理系统，确保产品的先进、有效和可靠。并且组建了富有经验的专业生产管理和营销团队，同时还搭建了一个网络化、信息共享化，并具有延伸和渗透作用的物流仓储系统。目前，本公司现有的脊柱和创伤内植入物产品共计百余种品种，千余个规格，经销渠道遍布全国各省市。

优贝特的愿景是将中国医生的智慧和经验转化为真正造福于广大病患的优质产品。

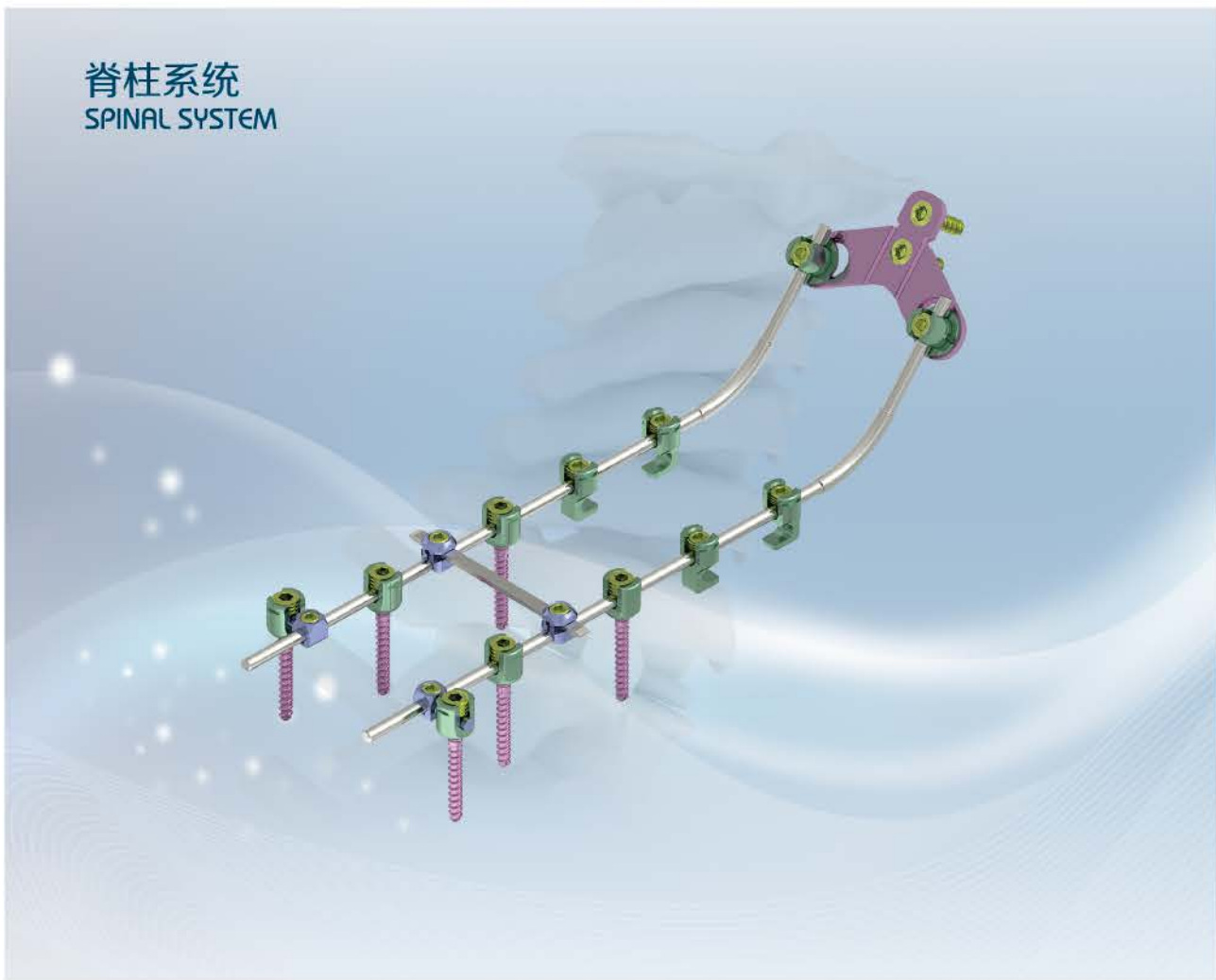
Suzhou Youbetter Medical Apparatus Co., Ltd is a specialized interprise focus on researching, developing, manufacrueing, selling medical instrument products. The area is more than 60 acres, including building area of more than 30000 square meters.

The company owns an international standard medical researching and developing team. To make sure the products advanced, effective and reliable, the company has established sound researching and developing system, contained internationally advanced researching and developing device and running system. Besides, the company has organized experienced sales team, and built a networkd, information-sharing logistics warehousing platform which is extended and penetrating. Hundreds kinds of spine and trauma implants with over thousands of sizes are being sold to all over the cities in China.

It is our wish to bring patients health and happiness with outstanding quality products from Chinese doctors' wisdom.

目录 CONTENTS

脊柱系统 SPINA SYSTEM	1-14
髓内钉系统 INTERLOCKING NAIL SYSTEM	15-31
锁定系统 LOCKING SYSTEM	32-68
微形锁定系统 MINI LOCKING SYSTEM	69-72
足踝系列 FOOT BONE PLATE SYSTEM	73-80
小儿系列 PEDIATRIC SYSTEM	81-88
普通板系列 PLATE SYSTEM	89-110
微形接骨板系统 MINI PLATE SYSTEM	111-116
中空螺钉系统 CANNULATED SCREWS SYSTEM	117-122



颈椎多轴椎弓根钉

Cervical Polyaxial Pedicle Screw

材质 (Material) : 钛合金 (titanium alloy)

产品编号 Product No.	直径 Diameter	长度(mm) Length
05.5629-01	3.5	10
05.5629-02	3.5	12
05.5629-03	3.5	14
05.5629-04	3.5	16
05.5629-05	3.5	18
05.5629-06	3.5	20
05.5629-07	3.5	22
05.5629-08	3.5	24
05.5629-09	3.5	26
05.5629-10	3.5	28
05.5629-11	3.5	30
05.5629-12	3.5	32
05.5629-20	4.0	10
05.5629-21	4.0	12
05.5629-22	4.0	14
05.5629-23	4.0	16
05.5629-24	4.0	18
05.5629-25	4.0	20
05.5629-26	4.0	22
05.5629-27	4.0	24
05.5629-28	4.0	26
05.5629-29	4.0	28
05.5629-30	4.0	30
05.5629-31	4.0	32
05.5629-32	4.0	34

注：适用于颈椎
Note: Used for cervical fixation



蝶形枕骨板

Posterior Occipital Plate

厚度 (Thickness) : 2.2mm

孔距 (Holes Spacing) : 11mm

材质 (Material) : 纯钛 (titanium)

产品编号 Product No.	孔数 Holes	长度(mm) Length
05.5629-95	4	33

注：选用HB4.0接骨螺钉，适用于枕骨。(图示为4孔)
Note: choose HB4.0 screws, used for occipital fixation.
(illustration show 4 holes)



横连器

Transverse Connector

材质 (Material) : 钛合金 (titanium alloy)

产品编号 Product No.	长度(mm) Length
05.5631-01	40
05.5631-02	50
05.5631-03	60

注: 适用于颈椎
Note: Used for cervical fixation



连接棒

Rod

材质 (Material) : 钛合金 (titanium alloy)

产品编号 Product No.	直径 Diameter	长度(mm) Length
05.5630-01	3.5	50
05.5630-02	3.5	60
05.5630-03	3.5	70
05.5630-04	3.5	80
05.5630-05	3.5	90
05.5630-06	3.5	100
05.5630-07	3.5	200

注: 适用于颈椎
Note: Used for cervical fixation



椎板钩

Laminar Hook

材质 (Material) : 钛合金 (titanium alloy)

产品编号 Product No.	高度(mm) Height
05.5629-80	4.5
05.5629-81	6.5

注: 适用于颈椎
Note: Used for cervical fixation



椎板成形钢板(防滑脱T型)

Laminar Shapping Plate (T-shaped Anti-slipping)

材质 (Material) : 纯钛 (titanium)

产品编号 Product No.	高度 Height	跨度(mm) Span
05.5697-01	5	10
05.5697-02	5	12
05.5697-03	5	14
05.5697-101	7	10
05.5697-102	7	12
05.5697-103	7	14

注: 选用HA2.0固定钉, HA2.5修正钉。适用于颈椎减压术的固定。
Note: choose HA2.0 Fixed Screw, HA2.5 Revise Screw, Used for Cervical decompression fixation.



椎板成形钢板(防滑脱型)

Laminar Shapping Plate (Anti-slipping)

材质 (Material) : 纯钛 (titanium)

产品编号 Product No.	高度 Height	跨度(mm) Span
05.5697-201	5	10
05.5697-202	5	12
05.5697-203	5	14
05.5697-301	7	10
05.5697-302	7	12
05.5697-303	7	14

注: 选用HA2.0固定钉, HA2.5修正钉。适用于颈椎减压术的固定。
Note: choose HA2.0 Fixed Screw, HA2.5 Revise Screw, Used for Cervical decompression fixation.



椎板成形钢板(植骨T型)

Laminar Shapping Plate (T-shaped Inserting-bone)

材质 (Material) : 纯钛 (titanium)

产品编号 Product No.	孔数 Holes	跨度(mm) Span
05.5696-201	5	10
05.5696-202	5	12
05.5696-203	5	14

注: 选用HA2.0固定钉, HA2.5修正钉。适用于颈椎减压术的固定。
Note: choose HA2.0 Fixed Screw, HA2.5 Revise Screw, Used for Cervical decompression fixation.



椎板成形钢板(植骨板)

Laminar Shapping Plate (Inserting-bone)

材质 (Material) : 纯钛 (titanium)

产品编号 Product No.	孔数 Holes	跨度(mm) Span
05.5696-101	5	10
05.5696-102	5	12
05.5696-103	5	14

注: 选用HA2.0固定钉, HA2.5修正钉。适用于颈椎减压术的固定。
Note: choose HA2.0 Fixed Screw, HA2.5 Revise Screw, Used for Cervical decompression fixation.



椎板成形钢板(单弯)

Laminar Shapping Plate (Single Eagle)

材质 (Material) : 纯钛 (titanium)

产品编号 Product No.	孔数 Holes	跨度(mm) Span
05.5693-61	5	8
05.5693-62	5	10
05.5693-63	5	12
05.5693-64	5	14

注: 选用HA2.0固定钉, HA2.5修正钉。适用于颈椎减压术的固定。
Note: choose HA2.0 Fixed Screw, HA2.5 Revise Screw, Used for Cervical decompression fixation.



铰链钢板

Cervical Plate Connection

材质 (Material) : 纯钛 (titanium)

产品编号 Product No.	孔数 Holes	长度(mm) Length
05.5696-01	4	20
05.5696-02	4	22
05.5696-03	4	25

注: 选用HA2.0固定钉, HA2.5修正钉。适用于颈椎减压术的固定。
Note: choose HA2.0 Fixed Screw, HA2.5 Revise Screw, Used for Cervical decompression fixation.



固定钉

Fixed Screw for Cervical Plate

材质 (Material) : 钛合金 (titanium alloy)

产品编号 Product No.	直径 Diameter	长度(mm) Length
05.5027-01	2.0	5
05.5027-02	2.0	6
05.5027-03	2.0	8
05.5027-04	2.0	10
05.5027-05	2.0	12



修正钉

Revise Screw for Cervical Plate

材质 (Material) : 钛合金 (titanium alloy)

产品编号 Product No.	直径 Diameter	长度(mm) Length
05.5027-101	2.5	5
05.5027-102	2.5	6
05.5027-103	2.5	8
05.5027-104	2.5	10
05.5027-105	2.5	12



单轴可折断椎弓根钉 I 型

Monoaxial Reduction Pedicle Screw I

材质 (Material): 钛合金 (titanium alloy)

产品编号 Product No.	直径 Diameter	长度(mm) Length
05.5602-18	5.5	30
05.5602-19	5.5	35
05.5602-20	5.5	40
05.5602-21	5.5	45
05.5602-24	6.0	35
05.5602-25	6.0	40
05.5602-26	6.0	45
05.5602-27	6.0	50
05.5602-31	6.5	35
05.5602-32	6.5	40
05.5602-33	6.5	45
05.5602-34	6.5	50
05.5602-38	7.0	35
05.5602-39	7.0	40
05.5602-40	7.0	45

注: 适用于胸腰椎
Note: Used for thoracolumbar fixation



多轴可折断椎弓根钉 I 型

Polyaxial Reduction Pedicle Screw I

材质 (Material): 钛合金 (titanium alloy)

产品编号 Product No.	直径 Diameter	长度(mm) Length
05.5604-19	5.5	35
05.5604-20	5.5	40
05.5604-21	5.5	45
05.5604-22	5.5	50
05.5604-24	6.0	35
05.5604-25	6.0	40
05.5604-26	6.0	45
05.5604-27	6.0	50
05.5604-31	6.5	35
05.5604-32	6.5	40
05.5604-33	6.5	45
05.5604-34	6.5	50
05.5604-38	7.0	35
05.5604-39	7.0	40
05.5604-40	7.0	45

注: 适用于胸腰椎
Note: Used for thoracolumbar fixation



横连器

Transverse Connector

材质 (Material): 钛合金 (titanium alloy)

产品编号 Product No.	长度(mm) Length
05.5611-02	60
05.5611-03	70
05.5611-04	80

注: 适用于胸腰椎
Note: Used for thoracolumbar fixation



连接棒

Rod

材质 (Material): 钛合金 (titanium alloy)

产品编号 Product No.	直径 Diameter	长度(mm) Length
05.5600-01	5.7	50
05.5600-02	5.7	60
05.5600-03	5.7	70
05.5600-04	5.7	80
05.5600-05	5.7	90
05.5600-06	5.7	100
05.5600-07	5.7	110
05.5600-08	5.7	120
05.5600-10	5.7	140
05.5600-12	5.7	160
05.5600-14	5.7	180
05.5600-16	5.7	200
05.5600-18	5.7	220
05.5600-20	5.7	240
05.5600-22	5.7	260
05.5600-24	5.7	280
05.5600-26	5.7	300
05.5600-28	5.7	320
05.5600-36	5.7	400

注: 适用于胸腰椎
Note: Used for thoracolumbar fixation



单轴可折断椎弓根钉II型

Monoaxial Reduction Pedicle Screw II
 材质 (Material) : 钛合金 (titanium alloy)

产品编号 Product No.	直径 Diameter	长度(mm) Length
05.5628-35	5.5	30
05.5628-17	5.5	35
05.5628-18	5.5	40
05.5628-19	5.5	45
05.5628-43	6.0	30
05.5628-39	6.0	35
05.5628-01	6.0	40
05.5628-02	6.0	45
05.5628-44	6.5	30
05.5628-40	6.5	35
05.5628-04	6.5	40
05.5628-05	6.5	45
05.5628-21	7.0	35
05.5628-22	7.0	40
05.5628-46	7.0	45

注: 适用于胸腰椎
 Note: Used for thorolumbar fixation



多轴可折断椎弓根钉II型

Polyaxial Reduction Pedicle Screw II
 材质 (Material) : 钛合金 (titanium alloy)

产品编号 Product No.	直径 Diameter	长度(mm) Length
05.5632-10	5.5	35
05.5632-11	5.5	40
05.5632-12	5.5	45
05.5632-14	6.0	35
05.5632-15	6.0	40
05.5632-16	6.0	45
05.5632-17	6.0	50
05.5632-18	6.5	35
05.5632-19	6.5	40
05.5632-20	6.5	45
05.5632-21	6.5	50
05.5632-22	7.0	30
05.5632-23	7.0	35
05.5632-24	7.0	40
05.5632-25	7.0	45

注: 适用于胸腰椎
 Note: Used for thorolumbar fixation



单轴微创钉

Minimally Invasive Spine System-Monoaxial Screw
 材质 (Material) : 钛合金 (titanium alloy)

产品编号 Product No.	直径 Diameter	长度(mm) Length
05.5627-26	5.5	35
05.5627-27	5.5	40
05.5627-28	5.5	45
05.5627-29	6.0	35
05.5627-01	6.0	40
05.5627-02	6.0	45
05.5627-03	6.0	50
05.5627-04	6.5	40
05.5627-05	6.5	45
05.5627-06	6.5	50

注: 适用于胸腰椎
 Note: Used for thorolumbar fixation



多轴微创钉

Minimally Invasive Spine System-Polyaxial Screw
 材质 (Material) : 钛合金 (titanium alloy)

产品编号 Product No.	直径 Diameter	长度(mm) Length
05.5627-30	5.5	35
05.5627-31	5.5	40
05.5627-32	5.5	45
05.5627-33	6.0	35
05.5627-07	6.0	40
05.5627-08	6.0	45
05.5627-09	6.0	50
05.5627-10	6.5	40
05.5627-11	6.5	45
05.5627-12	6.5	50

注: 适用于胸腰椎
 Note: Used for thorolumbar fixation



微创钉连接棒

Minimally Invasive Spine System-Rod

材质 (Material) : 钛合金 (titanium alloy)

产品编号 Product No.	直径 Diameter	长度(mm) Length
05.5627-13	6.0	50
05.5627-14	6.0	60
05.5627-15	6.0	70
05.5627-16	6.0	75
05.5627-17	6.0	80
05.5627-18	6.0	85
05.5627-19	6.0	90
05.5627-20	6.0	95
05.5627-21	6.0	100
05.5627-22	6.0	110
05.5627-23	6.0	120
05.5627-24	6.0	140
05.5627-25	6.0	160

注: 适用于胸腰椎

Note: Used for thorolumbar fixation



颈椎前路接骨板

Anterior Cervical Plate

材质 (Material) : 纯钛 (Titanium)

产品编号 Product No.	孔数 Holes	长度(mm) Length
05.5698-01	4	22
05.5698-02	4	25
05.5698-03	4	27
05.5698-04	4	30
05.5698-05	4	32
05.5698-06	4	35
05.5698-07	6	35
05.5698-08	6	38
05.5698-09	6	41
05.5698-10	6	44
05.5698-11	6	47
05.5698-12	6	50
05.5698-13	6	53
05.5698-14	8	47
05.5698-15	8	50
05.5698-16	8	53
05.5698-17	8	56
05.5698-18	8	59
05.5698-19	8	62
05.5698-20	8	65
05.5698-21	8	68
05.5698-22	8	71

注: 适用于颈椎

Note: Used for cervical fixation



固定螺钉、万向固定螺钉

Fixed Screw

材质 (Material): 钛 (Titanium)

产品编号 Product No.	直径 Diameter	长度(mm) Length
05.5057-01/101	4.0	10
05.5057-07/107	4.0	11
05.5057-02/102	4.0	12
05.5057-08/108	4.0	13
05.5057-03/103	4.0	14
05.5057-09/109	4.0	15
05.5057-04/104	4.0	16
05.5057-05/105	4.0	18
05.5057-06/106	4.0	20

注: 适用于颈椎

Note: Used for cervical fixation



修正螺钉、万向修正螺钉

Modified Screw

材质 (Material): 钛 (Titanium)

产品编号 Product No.	直径 Diameter	长度(mm) Length
05.5058-01/101	4.5	10
05.5058-02/102	4.5	12
05.5058-03/103	4.5	14
05.5058-04/104	4.5	16
05.5058-05/105	4.5	18
05.5058-06/106	4.5	20

注: 适用于颈椎

Note: Used for cervical fixation



钛笼

Titanium Cage

材质 (Material): 钛合金 (titanium alloy)

产品编号 Product No.	直径 Diameter	长度(mm) Length
05.5625-100	8	100
05.5625-101	10	100
05.5625-102	12	100
05.5625-103	14	100
05.5625-104	16	100
05.5625-105	18	100
05.5625-106	20	100

注: 适用于腰椎

Note: Used for throacolumbar fixation



髓内钉系统
 INTERLOCKING NAIL SYSTEM


股骨近端可控加压髓内钉

Intertan-Intertrochanteric Compression Nail

材质 (Material): 钛合金 (titanium alloy)

产品编号 Product No.	直径 Diameter	长度(mm) Length
05.5762-01	9	180
05.5762-02	9	200
05.5762-03	9	240
05.5762-04	10	180
05.5762-05	10	200
05.5762-06	10	240
05.5762-07	11	180
05.5762-08	11	200
05.5762-09	11	240
05.5762-30	12	180
05.5762-31	12	200
05.5762-32	12	240

注: 适用于股骨近端骨折、粗隆间骨折、转子间骨折

Note: Used of Proximal Femoral and intertrochanteric fracture.



封帽

End Cap

材质 (Material): 钛合金 (titanium alloy)

产品编号 Product No.	长度(mm) Length
05.5762-29	14.5



近端锁钉

Proximal Locking Screw

材质 (Material): 钛合金 (titanium alloy)

产品编号 Product No.	长度(mm) Length
05.5762-10	75
05.5762-11	80
05.5762-12	85
05.5762-13	90
05.5762-14	95
05.5762-15	100
05.5762-16	105
05.5762-17	110
05.5762-18	115



远端锁钉

Distal Locking Screw

材质 (Material): 钛合金 (titanium alloy)

产品编号 Product No.	直径 Diameter	长度(mm) Length
05.5758-66	4.7	28
05.5758-67	4.7	30
05.5758-68	4.7	32
05.5758-69	4.7	34
05.5758-71	4.7	36
05.5758-72	4.7	38
05.5758-73	4.7	40
05.5758-74	4.7	42
05.5758-75	4.7	44
05.5758-77	4.7	46
05.5758-78	4.7	48
05.5758-79	4.7	50
05.5758-82	4.7	55
05.5758-85	4.7	60
05.5758-88	4.7	65
05.5758-91	4.7	70
05.5758-94	4.7	75
05.5758-97	4.7	80



PFNA主钉

PFNA Main Nail

材质 (Material): 钛合金 (titanium alloy)

产品编号 Product No.	直径 Diameter	长度(mm) Length
05.5758-01	9	170
05.5758-02	9	200
05.5758-03	9	240
05.5758-04	10	170
05.5758-05	10	200
05.5758-06	10	240
05.5758-07	11	170
05.5758-08	11	200
05.5758-09	11	240
05.5758-10	12	170
05.5758-11	12	200
05.5758-12	12	240

注: 适用于股骨近端骨折、粗隆间骨折、转子间骨折

Note: Used of Proximal Femoral and intertrochanteric fracture.



普通尾帽

Normal End Cap

材质 (Material): 钛合金 (titanium alloy)

产品编号 Product No.	长度(mm) Length
05.5758-103	5
05.5758-104	10
05.5758-105	15
05.5758-106	20



锁定尾帽

Locking End Cap

材质 (Material): 钛合金 (titanium alloy)

产品编号 Product No.	长度(mm) Length
05.5758-134	5
05.5758-133	10
05.5758-135	15
05.5758-136	20



PFNA加长主钉

PFNA Long Main Nail

材质 (Material): 钛合金 (titanium alloy)

产品编号 Product No.	直径 Diameter	长度(mm) Length
05.5758-13/20 (L/R)	9	320
05.5758-14/21 (L/R)	9	340
05.5758-15/22 (L/R)	9	360
05.5758-16/23 (L/R)	9	380
05.5758-17/24 (L/R)	9	400
05.5758-18/25 (L/R)	9	420
05.5758-19/26 (L/R)	9	440
05.5758-27/34 (L/R)	10	320
05.5758-28/35 (L/R)	10	340
05.5758-29/36 (L/R)	10	360
05.5758-30/37 (L/R)	10	380
05.5758-31/38 (L/R)	10	400
05.5758-32/39 (L/R)	10	420
05.5758-33/40 (L/R)	10	440
05.5758-41/48 (L/R)	11	320
05.5758-42/49 (L/R)	11	340
05.5758-43/50 (L/R)	11	360
05.5758-44/51 (L/R)	11	380
05.5758-45/52 (L/R)	11	400
05.5758-46/53 (L/R)	11	420
05.5758-47/54 (L/R)	11	440

注: 适用于股骨粗隆间, 粗隆下, 股骨干骨折。

Note: Used for intertrochanteric, Subtrochanteric and femoral shaft fracture.



近端锁钉(刀片钉)

Proximal Locking Screw (Blade Nail)

材质 (Material): 钛合金 (titanium alloy)

产品编号 Product No.	直径 Diameter	长度(mm) Length
05.5758-55	10.4	75
05.5758-56	10.4	80
05.5758-57	10.4	85
05.5758-58	10.4	90
05.5758-59	10.4	95
05.5758-60	10.4	100
05.5758-61	10.4	105
05.5758-62	10.4	110
05.5758-63	10.4	115
05.5758-64	10.4	120



远端锁钉

Distal Locking Screw

材质 (Material): 钛合金 (titanium alloy)

产品编号 Product No.	直径 Diameter	长度(mm) Length
05.5758-66	4.7	28
05.5758-67	4.7	30
05.5758-68	4.7	32
05.5758-69	4.7	34
05.5758-71	4.7	36
05.5758-72	4.7	38
05.5758-73	4.7	40
05.5758-74	4.7	42
05.5758-75	4.7	44
05.5758-77	4.7	46
05.5758-78	4.7	48
05.5758-79	4.7	50
05.5758-82	4.7	55
05.5758-85	4.7	60
05.5758-88	4.7	65
05.5758-91	4.7	70
05.5758-94	4.7	75
05.5758-97	4.7	80



股骨带锁髓内钉 (3合1)

Femoral Interlocking Intramedullary nail (multi-function)

材质 (Material): 钛合金 (titanium alloy)

产品编号 Product No.	直径 Diameter	长度(mm) Length
05.5757-01	9	180
05.5757-02	9	200
05.5757-03	9	220
05.5757-04	9	240
05.5757-13/20 (L/R)	9	320
05.5757-14/21 (L/R)	9	340
05.5757-15/22 (L/R)	9	360
05.5757-16/23 (L/R)	9	380
05.5757-17/24 (L/R)	9	400
05.5757-18/25 (L/R)	9	420
05.5757-05	10	180
05.5757-06	10	200
05.5757-07	10	220
05.5757-08	10	240
05.5757-27/34 (L/R)	10	320
05.5757-28/35 (L/R)	10	340
05.5757-29/36 (L/R)	10	360
05.5757-30/37 (L/R)	10	380
05.5757-31/38 (L/R)	10	400
05.5757-32/39 (L/R)	10	420
05.5757-09	11	180
05.5757-10	11	200
05.5757-11	11	220
05.5757-12	11	240
05.5757-41/48 (L/R)	11	320
05.5757-42/49 (L/R)	11	340
05.5757-43/50 (L/R)	11	360
05.5757-44/51 (L/R)	11	380
05.5757-45/52 (L/R)	11	400
05.5757-46/53 (L/R)	11	420



注: 适用于股骨粗隆下骨折, 股骨干骨折, 股骨下1/3骨折。

Note: Used of Subtrochanteric and femoral shaft fracture and fracture at lower 1/3 femoral.

近端锁钉 (中空)

Proximal Locking Screw (Cannulated)

材质 (Material): 钛合金 (titanium alloy)

产品编号 Product No.	直径 Diameter	长度(mm) Length
05.5757-78	6.4	60
05.5757-79	6.4	65
05.5757-80	6.4	70
05.5757-81	6.4	75
05.5757-82	6.4	80
05.5757-83	6.4	85
05.5757-84	6.4	90
05.5757-85	6.4	95
05.5757-86	6.4	100
05.5757-87	6.4	105
05.5757-88	6.4	110
05.5757-89	6.4	115



封帽

End Cap

材质 (Material): 钛合金 (titanium alloy)

产品编号 Product No.	长度(mm) Length
05.5757-71	1.5
05.5757-72	5
05.5757-73	10
05.5757-74	15
05.5757-75	20



远端锁钉

Distal Locking Screw

材质 (Material): 钛合金 (titanium alloy)

产品编号 Product No.	直径 Diameter	长度(mm) Length
05.5758-66	4.7	28
05.5758-67	4.7	30
05.5758-68	4.7	32
05.5758-69	4.7	34
05.5758-71	4.7	36
05.5758-72	4.7	38
05.5758-73	4.7	40
05.5758-74	4.7	42
05.5758-75	4.7	44
05.5758-77	4.7	46
05.5758-78	4.7	48
05.5758-79	4.7	50
05.5758-82	4.7	55
05.5758-85	4.7	60
05.5758-88	4.7	65
05.5758-91	4.7	70
05.5758-94	4.7	75
05.5758-97	4.7	80



股骨带锁髓内钉

Femoral interlocking intramedullary nail

材质 (Material): 钛合金 (titanium alloy)

产品编号 Product No.	直径 Diameter	长度(mm) Length
05.5755-01	9	320
05.5755-02	9	340
05.5755-03	9	360
05.5755-04	9	380
05.5755-05	9	400
05.5755-06	9	420
05.5755-13	10	320
05.5755-14	10	340
05.5755-15	10	360
05.5755-16	10	380
05.5755-17	10	400
05.5755-18	10	420
05.5755-19	11	320
05.5755-20	11	340
05.5755-21	11	360
05.5755-22	11	380
05.5755-23	11	400
05.5755-24	11	420

注: 适用于股骨干骨折。
Note: Used for femoral shaft fracture.

6.0锁钉

6.0mm locking screw

材质 (Material): 钛合金 (titanium alloy)

产品编号 Product No.	直径 Diameter	长度(mm) Length
05.5755-25	6.0	30
05.5755-28	6.0	35
05.5755-31	6.0	40
05.5755-34	6.0	45
05.5755-37	6.0	50
05.5755-40	6.0	55
05.5755-43	6.0	60
05.5755-44	6.0	65
05.5755-45	6.0	70
05.5755-46	6.0	75
05.5755-47	6.0	80



股骨倒置带锁髓内钉

Femoral Reverse Interlocking Intramedullary Nail

材质 (Material): 钛合金 (titanium alloy)

产品编号 Product No.	直径 Diameter	长度(mm) Length
05.5752-02	9	200
05.5752-03	9	220
05.5752-04	9	240
05.5752-05	9	260
05.5752-06	9	280
05.5752-07	9	300
05.5752-08	9	320
05.5752-09	9	340
05.5752-26	10	240
05.5752-27	10	260
05.5752-28	10	280
05.5752-29	10	300
05.5752-30	10	320
05.5752-31	10	340
05.5752-37	11	240
05.5752-38	11	260
05.5752-39	11	280
05.5752-40	11	300
05.5752-41	11	320
05.5752-42	11	340

注: 适用于股骨下1/3骨折

Note: Used for fracture at lower 1/3 femoral.



6.0锁钉

6.0mm locking screw

材质 (Material): 钛合金 (titanium alloy)

产品编号 Product No.	直径 Diameter	长度(mm) Length
05.5755-25	6.0	30
05.5755-28	6.0	35
05.5755-31	6.0	40
05.5755-34	6.0	45
05.5755-37	6.0	50
05.5755-40	6.0	55
05.5755-43	6.0	60
05.5755-44	6.0	65
05.5755-45	6.0	70
05.5755-46	6.0	75
05.5755-47	6.0	80



5.0锁钉

5.0mm Locking Screw

材质 (Material): 钛合金 (titanium alloy)

产品编号 Product No.	直径 Diameter	长度(mm) Length
05.5752-46	5.0	50
05.5752-47	5.0	55
05.5752-48	5.0	60
05.5752-49	5.0	65
05.5752-50	5.0	70
05.5752-51	5.0	75
05.5752-52	5.0	80
05.5752-53	5.0	85
05.5752-54	5.0	90
05.5752-55	5.0	95



专家级胫骨带锁髓内钉

Cannulated Tibial Interlocking Intramedullary Nail

材质 (Material): 钛合金 (titanium alloy)

产品编号 Product No.	直径 Diameter	长度(mm) Length
05.5754-01	8.5	250
05.5754-02	8.5	270
05.5754-03	8.5	280
05.5754-04	8.5	300
05.5754-05	8.5	310
05.5754-06	8.5	330
05.5754-07	8.5	340
05.5754-08	8.5	360
05.5754-09	8.5	370
05.5754-10	9.0	250
05.5754-11	9.0	270
05.5754-12	9.0	280
05.5754-13	9.0	300
05.5754-14	9.0	310
05.5754-15	9.0	330
05.5754-16	9.0	340
05.5754-17	9.0	360
05.5754-18	9.0	370
05.5754-19	10	250
05.5754-20	10	270
05.5754-21	10	280
05.5754-22	10	300
05.5754-23	10	310
05.5754-24	10	330
05.5754-25	10	340
05.5754-26	10	360
05.5754-27	10	370

注: 适用于胫骨平台下骨折, 胫骨干骨折, 胫骨下端骨折
 Note: Used for tibia plateau, Tibia shaft and lower end of Tibia fracture.



封帽

End Cap

材质 (Material): 钛合金 (titanium alloy)

产品编号 Product No.	长度(mm) Length
05.5754-87	2.5
05.5754-88	7.5
05.5754-89	12.5
05.5754-90	17.5



近端锁钉

Cancellous Locking Screw

材质 (Material): 钛合金 (titanium alloy)

产品编号 Product No.	直径 Diameter	长度(mm) Length
05.5754-30	4.8	30
05.5754-31	4.8	35
05.5754-32	4.8	40
05.5754-33	4.8	45
05.5754-34	4.8	50
05.5754-35	4.8	55
05.5754-36	4.8	60
05.5754-37	4.8	65
05.5754-38	4.8	70
05.5754-39	4.8	75
05.5754-40	4.8	80



远端锁钉

Cortical Locking Screw

材质 (Material): 钛合金 (titanium alloy)

产品编号 Product No.	直径 Diameter	长度(mm) Length
05.5754-51	4.35	26
05.5754-52	4.35	28
05.5754-53	4.35	30
05.5754-54	4.35	32
05.5754-55	4.35	34
05.5754-56	4.35	36
05.5754-57	4.35	38
05.5754-58	4.35	40
05.5754-59	4.35	42
05.5754-60	4.35	44
05.5754-61	4.35	46
05.5754-62	4.35	48
05.5754-63	4.35	50
05.5754-64	4.35	52
05.5754-65	4.35	54
05.5754-66	4.35	56
05.5754-67	4.35	58
05.5754-68	4.35	60



锁定型胫骨髓内钉

Locked Tibial Intramedullary Nail

材质 (Material): 钛合金 (titanium alloy)

产品编号 Product No.	直径 Diameter	长度(mm) Length
05.5764- (01-12)	8.5	250-360 (每10mm一个规格)
05.5764- (15-26)	9.0	250-360 (每10mm一个规格)
05.5764- (29-40)	10	250-360 (每10mm一个规格)

注: 适用于胫骨平台下骨折, 胫骨干骨折, 胫骨下端骨折
 Note: Used for tibia plateau, Tibia shaft and lower end of Tibia fracture.



封帽

End Cap

材质 (Material): 钛合金 (titanium alloy)

产品编号 Product No.	长度(mm) Length
05.5754-87	2.5
05.5754-88	7.5
05.5754-89	12.5
05.5754-90	17.5



近端锁钉

Cancellous Locking Screw

材质 (Material): 钛合金 (titanium alloy)

产品编号 Product No.	直径 Diameter	长度(mm) Length
05.5754-30	4.8	30
05.5754-31	4.8	35
05.5754-32	4.8	40
05.5754-33	4.8	45
05.5754-34	4.8	50
05.5754-35	4.8	55
05.5754-36	4.8	60
05.5754-37	4.8	65
05.5754-38	4.8	70
05.5754-39	4.8	75
05.5754-40	4.8	80



远端锁钉

Cortical Locking Screw

材质 (Material): 钛合金 (titanium alloy)

产品编号 Product No.	直径 Diameter	长度(mm) Length
05.5754-51	4.35	26
05.5754-52	4.35	28
05.5754-53	4.35	30
05.5754-54	4.35	32
05.5754-55	4.35	34
05.5754-56	4.35	36
05.5754-57	4.35	38
05.5754-58	4.35	40
05.5754-59	4.35	42
05.5754-60	4.35	44
05.5754-61	4.35	46
05.5754-62	4.35	48
05.5754-63	4.35	50
05.5754-64	4.35	52
05.5754-65	4.35	54
05.5754-66	4.35	56
05.5754-67	4.35	58
05.5754-68	4.35	60



髓内钉系统

INTERLOCKING NAIL SYSTEM

胫骨带锁髓内钉

Tibial Interlocking Intramedullary nail

材质 (Material): 钛合金 (titanium alloy)

产品编号 Product No.	直径 Diameter	长度(mm) Length
05.5750-09	8.5	260
05.5750-10	8.5	280
05.5750-11	8.5	300
05.5750-12	8.5	320
05.5750-13	8.5	340
05.5750-16	9.0	260
05.5750-17	9.0	280
05.5750-18	9.0	300
05.5750-19	9.0	320
05.5750-20	9.0	340
05.5750-30	10	260
05.5750-31	10	280
05.5750-32	10	300
05.5750-33	10	320
05.5750-34	10	340

注: 适用于胫骨中段骨折

Note: Used for fracture of Middle Tibia.



6.0锁钉

6.0mm Locking Screw

材质 (Material): 钛合金 (titanium alloy)

产品编号 Product No.	直径 Diameter	长度(mm) Length
05.5755-25	6.0	30
05.5755-28	6.0	35
05.5755-31	6.0	40
05.5755-34	6.0	45
05.5755-37	6.0	50
05.5755-40	6.0	55
05.5755-43	6.0	60
05.5755-44	6.0	65
05.5755-45	6.0	70
05.5755-46	6.0	75
05.5755-47	6.0	80



锁定系统
LOCKING SYSTEM

锁骨钩组合型锁定板

Clavicle Hook Combined Locking Plate

厚度 (Thickness) : 3.0mm

孔距 (Holes Spacing) : 12mm

材质 (Material) : 纯钛 (Titanium)

产品编号 Product No.	孔数 Holes	长度(mm) Length
05.6052-100/109 (L/R)	2	48
05.6052-101/110 (L/R)	3	60
05.6052-102/111 (L/R)	4	72
05.6052-103/112 (L/R)	5	84
05.6052-104/113 (L/R)	6	96

注: 选用HC3.5, HA3.5, HB4.0金属接骨螺钉, 适用于锁骨远端骨折。
(图示为5孔左)

Note: choose HC3.5, HA3.5, HB4.0 screws, used for distal clavicle fixation.
(illustration show 5 holes left)



尺骨鹰嘴锁定板(亚洲款)

Olecranon Locking Plate (Asian type)

厚度 (Thickness) : 2.5mm

孔距 (Holes Spacing) : 12.5mm

材质 (Material) : 纯钛 (Titanium)

产品编号 Product No.	孔数 Holes	长度(mm) Length
05.6065-01/21 (L/R)	3	99.3
05.6065-03/22 (L/R)	4	111.8
05.6065-05/24 (L/R)	6	136.8
05.6065-07/26 (L/R)	8	161.8
05.6065-09/28 (L/R)	10	186.8

注: 选用HC2.9, HC3.5, HA3.5金属接骨螺钉, 适用于尺骨近端骨折。
(图示为8孔左)

Note: choose HC2.9, HC3.5, HA3.5 screws, used for proximal ulna fixation.
(illustration show 8 holes left)



冠状突锁定板

Coronary Process Locking Plate

厚度 (Thickness) : 1.4mm

材质 (Material) : 纯钛 (Titanium)

产品编号 Product No.	孔数 Holes	长度(mm) Length
05.6065-101/111 (L/R)	6	39

注: 选用HC2.5金属接骨螺钉, 适用于尺骨冠状突骨折。
(图示为6孔右)

Note: choose HC2.5 screws, used for Coronary process of ulna fixation.
(illustration show 6 holes right)



股骨近端翻修锁定板

Proximal Femoral Revision Locking Plate

厚度 (Thickness) : 6.0mm

孔距 (Holes Spacing) : 25mm

材质 (Material) : 纯钛 (Titanium)

产品编号 Product No.	孔数 Holes	长度(mm) Length
05.6120-03/21 (L/R)	4	162
05.6120-04/23 (L/R)	6	212
05.6120-06/25 (L/R)	8	262
05.6120-08/27 (L/R)	10	312
05.6120-10/29 (L/R)	12	362

注: 选用HC5.0, HA4.5金属接骨螺钉, 适用于股骨近端骨折。
(图示为10孔右)

Note: choose HC5.0, HA4.5 screws, used for Proximal femoral fixation.
(illustration show 10 holes right)



胫骨截骨标准型锁定板

Tibial Osteotomy Standard Locking Plate

厚度 (Thickness) : 2.8mm

材质 (Material) : 纯钛 (Titanium)

产品编号 Product No.	孔数 Holes	长度(mm) Length
05.5848-101	5	114.4

注: 选用HC5.0, HA4.5金属接骨螺钉, 适用于胫骨骨折。
(图示为5孔)

Note: choose HC5.0, HA4.5 screws, used for tibial fixation.
(illustration show 5 holes)



腓骨远端外侧钩型锁定板

Distal Fibular Lateral Hook Locking Plate

厚度 (Thickness) : 2.2mm

孔距 (Holes Spacing) : 13mm

材质 (Material) : 纯钛 (Titanium)

产品编号 Product No.	孔数 Holes	长度(mm) Length
05.6105-101/121 (L/R)	3	74
05.6105-102/122 (L/R)	4	87
05.6105-103/123 (L/R)	5	100
05.6105-105/125 (L/R)	7	126
05.6105-107/127 (L/R)	9	152
05.6105-109/129 (L/R)	11	178

注: 选用HC2.9, HC3.5, HA3.5金属接骨螺钉,
适用于腓骨远端骨折。(图示为8孔左)

Note: choose HC2.9, HC3.5, HA3.5, HB4.0 screws, used for distal fibular fixation.
(illustration show 8 holes left)



胫骨远端前侧锁定板

Distal Tibial Front Side Locking Plate

厚度 (Thickness) : 3.2mm

孔距 (Holes Spacing) : 18mm

材质 (Material) : 纯钛 (Titanium)

产品编号 Product No.	孔数 Holes	长度(mm) Length
05.6108-02/20 (L/R)	3	108
05.6108-01/22 (L/R)	5	144
05.6108-05/24 (L/R)	7	180
05.6108-07/26 (L/R)	9	216
05.6108-09/28 (L/R)	11	252

注: 选用HA3.5, HB4.0, HC3.5, HC4.0金属接骨螺钉, 适用于胫骨远端骨折。
(图示为5孔右)

Note: choose HC3.5, HC4.0, HA3.5, HB4.0 screws, used for tibial fixation.
(illustration show 5 holes right)



髌骨钛网

Titanium mesh of patella

厚度 (Thickness) : 1.0mm

材质 (Material) : 纯钛 (Titanium)

产品编号 Product No.	长度(mm) Length
05.5256-401W	38
05.5256-402W	42
05.5256-403W	46

注: 选用HC2.9金属接骨螺钉, 适用于髌骨骨折。

Note: choose HC2.9 screws, used for patella fixation.



髌骨板中号

Patella plate (medium)

厚度 (Thickness): 1.5mm

材质 (Material): 纯钛 (Titanium)

产品编号 Product No.	长度(mm) Length
05.5256-201Q	33.6
05.5256-202Q	37.8
05.5256-203Q	41

注: 选用HC2.9金属接骨螺钉, 适用于髌骨骨折。

Note: choose HC2.9 screws, used for patella fixation.



髌骨板中号2

Patella plate (medium 2)

厚度 (Thickness): 1.5mm

材质 (Material): 纯钛 (Titanium)

产品编号 Product No.	长度(mm) Length
05.5256-301B	32.2
05.5256-302B	37
05.5256-303B	40.3

注: 选用HC2.9金属接骨螺钉, 适用于髌骨骨折。

Note: choose HC2.9 screws, used for patella fixation.

锁骨S形锁定板 (解剖型)

S - Clavicle Locking Plate (Anatomical)

厚度 (Thickness): 3.4 mm

孔距 (Holes Spacing): 12.5 mm

材质 (Material): 钛 (Titanium)

产品编号 Product No.	孔数 Holes	长度(mm) Length
05.5850-102/111 (L/R)	5	74
05.5850-103/113 (L/R)	6	86
05.5850-104/114 (L/R)	7	99
05.5850-105/115 (L/R)	8	111
05.5850-107/117 (L/R)	10	136

注: 选用HC3.5, HC4.0, HA3.5金属接骨螺钉, 适用于锁骨中端骨折。
(图示为8孔左)

Note: choose HC3.5, HC4.0, HA3.5 screws, used for Clavicle fixation. (illustration show 8 holes left)



锁骨S形锁定板 | 型

S - Clavicle Locking Plate |

厚度 (Thickness): 3.0 mm

孔距 (Holes Spacing): 13.5 mm

材质 (Material): 纯钛 (Titanium)

产品编号 Product No.	孔数 Holes	长度(mm) Length
05.5850-02/11 (L/R)	5	67
05.5850-03/12 (L/R)	6	81
05.5850-04/13 (L/R)	7	93
05.5850-05/14 (L/R)	8	106
05.5850-06/15 (L/R)	9	117
05.5850-07/16 (L/R)	10	130
05.5850-09/18 (L/R)	12	156

注: 选用HC3.5, HC4.0, HA3.5金属接骨螺钉, 适用于锁骨干骨折。
(图示为8孔左)

Note: choose HC3.5, HC4.0, HA3.5 screws, used for Clavicle fixation. (illustration show 8 holes left)



锁骨远端锁定板A型

Distal Clavicle Locking Plate A

厚度 (Thickness) : 3.0 mm

孔距 (Holes Spacing) : 13 mm

材质 (Material) : 纯钛 (Titanium)

产品编号 Product No.	孔数 Holes	长度(mm) Length
05.6052-01/12 (L/R)	3	55
05.6052-03/13 (L/R)	4	68
05.6052-04/14 (L/R)	5	81
05.6052-05/15 (L/R)	6	94
05.6052-06/16 (L/R)	7	107
05.6052-07/17 (L/R)	8	119

注: 选用HC2.9, HC3.5, HA3.5金属接骨螺钉,适用于锁骨远端骨折。
(图示为7孔左)

Note: choose HC2.9, HC3.5, HA3.5 screws, used for Distal clavicle fixation.(illustration show 7 holes left)



锁骨钩锁定板 I 型

Clavicle Hook Locking Plate I

厚度 (Thickness) : 3.0 mm

孔距 (Holes Spacing) : 14.5 mm

材质 (Material) : 纯钛 (Titanium)

产品编号 Product No.	孔数 Holes	长度(mm) Length
05.5856-01/10 (L/R)	2	89
05.5856-02/11 (L/R)	3	104
05.5856-03/12 (L/R)	4	118
05.5856-04/13 (L/R)	5	133
05.5856-05/14 (L/R)	6	147

注: 选用HC3.5, HC4.0, HA3.5金属接骨螺钉,适用于肩锁关节脱位。
(图示为5孔左)

Note: choose HC3.5, HC4.0, HA3.5 screws, used for Clavicle fixation.(illustration show 5 holes left)



肱骨近端锁定板B型

Proximal Humerus Locking Plate B

厚度 (Thickness) : 4.0mm

孔距 (Holes Spacing) : 13 mm

材质 (Material) : 纯钛 (Titanium)

产品编号 Product No.	孔数 Holes	长度(mm) Length
05.5898-15	3	101
05.5898-16	4	114
05.5898-17	5	127
05.5898-18	6	140
05.5898-19	7	153
05.5898-20	8	166
05.5898-22	10	192
05.5898-24	12	218

注: 选用HC3.5, HC4.0, HA3.5金属接骨螺钉,适用于肱骨近端骨折。
(图示为8孔)

Note: choose HC3.5, HC4.0, HA3.5 screws, used for Proximal humeral fixation.(illustration show 8 holes)



肱骨大结节锁定板

Distal Humerus Greater Tubercle Locking Plate

厚度 (Thickness) : 3.2mm

孔距 (Holes Spacing) : 13 mm

材质 (Material) : 纯钛 (Titanium)

产品编号 Product No.	孔数 Holes	长度(mm) Length
05.6020-01/10 (L/R)	5	44

注: 选用HC2.9, HC4.0, HA2.7, HA3.5金属接骨螺钉,适用于肱骨近端撕脱性骨折。
(图示为5孔右)

Note: choose HC2.9, HC4.0, HA2.7, HA3.5 screws, used for Proximal humerus fixation.(illustration show 5 holes right)



肱骨远端外侧锁定板A型

Distal Humerus Lateral Locking Plate A

厚度 (Thickness) : 2.5 mm

孔距 (Holes Spacing) : 13mm

材质 (Material) : 纯钛 (Titanium)

产品编号 Product No.	孔数 Holes	长度(mm) Length
05.6063-03/22 (L/R)	4	81
05.5886-05/24 (L/R)	6	107
05.5886-07/26 (L/R)	8	133
05.5886-08/28 (L/R)	10	159
05.5886-11/30 (L/R)	12	185

注: 选用HC3.5, HC4.0, HA3.5金属接骨螺钉,适用于肱骨远端外侧骨折。(图示为6孔左)

Note: choose HC3.5, HC4.0, HA3.5 screws, used for distal humerus fixation.(illustration show 6 holes left)



肱骨远端内侧锁定板B型

Distal Humerus Medial Locking Plate B

厚度 (Thickness) : 3 mm

孔距 (Holes Spacing) : 13mm

材质 (Material) : 纯钛 (Titanium)

产品编号 Product No.	孔数 Holes	长度(mm) Length
05.5886-102/112 (L/R)	4	75
05.5886-104/114 (L/R)	6	101
05.5886-106/116 (L/R)	8	127
05.5886-108/118 (L/R)	10	153
05.5886-110/120 (L/R)	12	179

注: 选用HC3.5, HC4.0, HA3.5金属接骨螺钉,适用于肱骨远内侧骨折。(图示为8孔左)

Note: choose HC3.5, HC4.0, HA3.5 screws, used for distal humerus fixation.(illustration show 8 holes left)



肱骨远端外侧锁定板B型

Distal Humerus Lateral Locking Plate B

厚度 (Thickness) : 3.2mm

孔距 (Holes Spacing) : 13 mm

材质 (Material) : 纯钛 (Titanium)

产品编号 Product No.	孔数 Holes	长度(mm) Length
05.5886-202/212 (L/R)	4	84
05.5886-204/214 (L/R)	6	110
05.5886-206/216 (L/R)	8	136
05.5886-208/218 (L/R)	10	162

注: 选用HC2.9, HC3.5, HC4.0, HA3.5金属接骨螺钉,适用于肱骨远端外侧骨折。(图示为6孔左)

Note: choose HC2.9, HC3.5, HC4.0, HA3.5 screws, used for distal humerus fixation.(illustration show 6 holes left)



桡骨小头锁定板

Distal Radius Head Locking Plate

厚度 (Thickness) : 2.5 mm

孔距 (Holes Spacing) : 10 mm

材质 (Material) : 纯钛 (Titanium)

产品编号 Product No.	孔数 Holes	长度(mm) Length
05.5844-101/105 (L/R)	3	36
05.5844-102/106 (L/R)	4	46
05.5844-103/107 (L/R)	5	56

注: 选用HC2.5, HA2.7金属接骨螺钉,适用于桡骨小头骨折。(图示为3孔右)

Note: choose HC2.5, HA2.7 screws, used for radius head fixation.(illustration show 3 holes right)



桡侧柱锁定板(背侧)

Radius Column Locking Plate (Back Side)

厚度 (Thickness) : 2.0mm
 孔距 (Holes Spacing) : 6.5 mm
 材质 (Material) : 纯钛 (Titanium)

产品编号 Product No.	孔数 Holes	长度(mm) Length
05.5846-102	6	55
05.5846-103	7	61
05.5846-104	8	68

注: 选用HC2.9, HA2.7金属接骨螺钉,适用于桡骨远端骨折。
 (图示为6孔)
 Note: choose HC2.9, HA2.7 screws, used for distal radius fixation.
 (illustration show 6 holes)



桡骨远端背侧锁定板(低切迹)

Distal Radius Dorsal Locking Plate (low-profile)

厚度 (Thickness) : 2.5 mm
 孔距 (Holes Spacing) : 10 mm
 材质 (Material) : 纯钛 (Titanium)

产品编号 Product No.	孔数 Holes	长度(mm) Length
05.5844-201/205 (L/R)	3	46
05.5844-202/206 (L/R)	4	56
05.5844-203/207 (L/R)	5	66
05.5844-204/208 (L/R)	6	76

注: 选用HC2.9, HA2.7金属接骨螺钉,适用于桡骨远端背侧骨折。
 (图示为6孔左)
 Note: choose HC2.9, HA2.7 screws, used for distal radius fixation.
 (illustration show 6 holes left)



桡骨远端小L形锁定板(背侧)B型

Distal Radius Small L-Shaped Locking Plate (back side) B

厚度 (Thickness) : 2mm
 孔距 (Holes Spacing) : 7mm
 材质 (Material) : 纯钛 (Titanium)

产品编号 Product No.	孔数 Holes	长度(mm) Length
05.5852-202/207 (L/R)	3	34
05.5852-203/208 (L/R)	4	41
05.5852-204/209 (L/R)	5	48
05.5852-205/210 (L/R)	6	55

注: 选用HC2.9, HA2.7金属接骨螺钉,适用于桡骨远端骨折。
 (图示为4孔右)
 Note: choose HC2.9, HA2.7 screws, used for distal radius fixation.
 (illustration show 4 holes right)



桡骨远端掌侧锁定板B型

Distal Radius Volar Locking Plate B

厚度 (Thickness) : 2.0mm
 孔距 (Holes Spacing) : 8.5 mm
 材质 (Material) : 纯钛 (Titanium)

产品编号 Product No.	孔数 Holes	长度(mm) Length
05.5852-102/112 (L/R)	3	58
05.5852-103/113 (L/R)	4	67
05.5852-104/114 (L/R)	5	75

注: 选用HC2.9, HA2.7金属接骨螺钉,适用于桡骨远端掌侧骨折。
 (图示为5孔左)
 Note: choose HC2.9, HA2.7 screws, used for distal radius fixation.
 (illustration show 5 holes left)



Y-DVR桡骨远端掌侧接骨板

Y-DVR Distal Radius Volar Plate

厚度 (Thickness) : 2.5 mm

孔距 (Holes Spacing) : 8 mm

材质 (Material) : 纯钛 (Titanium)

产品编号 Product No.	孔数 Holes	长度(mm) Length
05.6061-01/10 (L/R)	3	49
05.6061-02/12 (L/R)	4	57
05.6061-05/15 (L/R)	5	65
05.6061-03/13 (L/R)	7	86
05.6061-04/14 (L/R)	8	176

注: 选用HC2.9, HC3.5, HA3.5金属接骨螺钉, 适用于桡骨远端骨折。
(图示为4孔左)

Note: choose HC2.9, HC3.5, HA3.5 screws, used for distal radius fixation.
(illustration show 4 holes left)



小T形锁定板B型

Distal Radius Small T-Shaped Locking Plate B

厚度 (Thickness) : 1.5mm

孔距 (Holes Spacing) : 11mm

材质 (Material) : 纯钛 (Titanium)

产品编号 Product No.	孔数 Holes	长度(mm) Length
05.5854-12	3	54
05.5854-13	4	65
05.5854-14	5	76
05.5854-15	6	87

注: 选用HC3.5, HA3.5金属接骨螺钉, 适用于桡骨远端骨折。
(图示为6孔)

Note: choose HC3.5, HA3.5 screws, used for distal radius fixation.
(illustration show 6 holes)



桡骨远端掌侧斜T形锁定板

Distal Radius volar Oblique T-Shaped Locking Plate

厚度 (Thickness) : 1.5mm

孔距 (Holes Spacing) : 9 mm

材质 (Material) : 纯钛 (Titanium)

产品编号 Product No.	孔数 Holes	长度(mm) Length
05.5908-02301/02311 (L/R)	3	40
05.5908-02302/02312 (L/R)	4	49
05.5908-02303/02313 (L/R)	5	58

注: 选用HC2.9, HA2.7金属接骨螺钉, 适用于桡骨远端骨折。
(图示为4孔右)

Note: choose HC2.9, HA2.7 screws, used for distal radius fixation.
(illustration show 4 holes right)



小斜T形锁定板I型

Distal Radius Oblique Small T-Shaped Locking Plate I

厚度 (Thickness) : 1.5mm

孔距 (Holes Spacing) : 11mm

材质 (Material) : 纯钛 (Titanium)

产品编号 Product No.	孔数 Holes	长度(mm) Length
05.5844-02/09 (L/R)	3	57
05.5844-03/10 (L/R)	4	68
05.5844-04/11 (L/R)	5	79
05.5844-05/12 (L/R)	6	90

注: 选用HC3.5, HA3.5金属接骨螺钉, 适用于桡骨远端骨折。
(图示为5孔右)

Note: choose HC3.5, HA3.5 screws, used for distal radius fixation.
(illustration show 5 holes right)



尺骨远端锁定板(尺侧柱)

Distal Ulna Locking Plate (Ulnar Column)

厚度 (Thickness) : 1.3 mm

孔距 (Holes Spacing) : 5mm

材质 (Material) : 纯钛 (Titanium)

产品编号 Product No.	孔数 Holes	长度(mm) Length
05.5846-202	6	36
05.5846-203	7	41
05.5846-204	8	46

注: 选用HC2.5, HA2.0金属接骨螺钉,适用于尺骨远端骨折。
(图示为8孔)

Note: choose HC2.5, HA2.0 screws, used for distal Ulna fixation.
(illustration show 8 holes)



尺骨鹰嘴锁定板B型

Olecranon Ulna Locking Plate B

厚度 (Thickness) : 3.0 mm

孔距 (Holes Spacing) : 13 mm

材质 (Material) : 纯钛 (Titanium)

产品编号 Product No.	孔数 Holes	长度(mm) Length
05.5872-20/30 (L/R)	3	95
05.5872-21/31 (L/R)	4	108
05.5872-22/32 (L/R)	5	121
05.5872-23/33 (L/R)	6	134
05.5872-24/34 (L/R)	7	147
05.5872-25/35 (L/R)	8	160
05.5872-26/36 (L/R)	9	173

注: 选用HC3.5, HC4.0, HA3.5金属接骨螺钉,适用于尺骨近端骨折。
(图示为5孔左)

Note: choose HC3.5, HC4.0, HA3.5 screws, used for proximal Ulna fixation.(illustration show 5 holes left)

股骨近端锁定板A型

Proximal Femoral Locking Plate A

厚度 (Thickness) : 6.0 mm

孔距 (Holes Spacing) : 18mm

材质 (Material) : 纯钛 (Titanium)

产品编号 Product No.	孔数 Holes	长度(mm) Length
05.6002-32/46 (L/R)	5	149
05.6002-34/48 (L/R)	7	185
05.6002-36/50 (L/R)	9	221
05.6002-38/52 (L/R)	11	257
05.6002-40/54 (L/R)	13	293

注: 选用HC5.0, HA4.5金属接骨螺钉,适用于股骨近端骨折。
(图示为7孔左)

Note: choose HC5.0, HA4.5 screws, used for proximal femoral fixation.(illustration show 7 holes left)



股骨近端解剖型锁定板G型

Proximal Femoral Anatomical Locking Plate G

厚度 (Thickness) : 6.0 mm

孔距 (Holes Spacing) : 18mm

材质 (Material) : 纯钛 (Titanium)

产品编号 Product No.	孔数 Holes	长度(mm) Length
05.5892-209/211 (L/R)	3	131
05.5892-210/212 (L/R)	4	149
05.5892-201/205 (L/R)	5	167
05.5892-202/206 (L/R)	7	203
05.5892-203/207 (L/R)	9	239
05.5892-204/208 (L/R)	11	275

注: 选用HC5.0, GJYDVIII φ 6.5(中空锁定钉), HA4.5金属接骨螺钉,
适用于股骨近端骨折。(图示为7孔左)

Note: choose HC5.0, cannulated locking 6.5mm, HA4.5 screws, used for proximal femoral fixation.(illustration show 7 holes left)



DHS锁定板A型

DHS Locking Plate A

厚度 (Thickness) : 6.0mm

孔距 (Holes Spacing) : 18 mm

材质 (Material) : 纯钛 (Titanium)

产品编号 Product No.	孔数 Holes	长度(mm) Length
05.5884-02	3	106
05.5884-03	4	124
05.5884-04	5	142
05.5884-05	6	160
05.5884-07	8	196
05.5884-09	10	232

注: 选用HC5.0, HA4.5金属接骨螺钉, GJYDVII φ12, 适用于股骨近端骨折。(图示为5孔)

Note: choose HC5.0, HA4.5, cannulated compression 12mm screws, used for proximal femoral fixation. (illustration show 5 holes)



拉力螺钉

Lag Screws

材质 (Material) : 钛合金 (titanium alloy)

产品编号 Product No.	直径 Diameter	长度(mm) Length
05.5361-02	12	55
05.5361-03	12	60
05.5361-04	12	65
05.5361-05	12	70
05.5361-06	12	75
05.5361-07	12	80
05.5361-08	12	85
05.5361-09	12	90
05.5361-10	12	95
05.5361-11	12	100
05.5361-12	12	105
05.5361-13	12	110
05.5361-14	12	115
05.5361-15	12	120



股骨近端锁定板 (万向加压)

Proximal Femoral Locking Plate (Multiaxial Compression)

厚度 (Thickness) : 6.0 mm

材质 (Material) : 纯钛 (Titanium)

产品编号 Product No.	孔数 Holes	长度(mm) Length
05.5892-303/304 (L/R)	4	大
05.5892-301/302 (L/R)	4	小

注: 选用HC5.0, 金属接骨螺钉, GJYDIII φ6.5, 适用于股骨颈骨折。(图示为4孔右)

Note: choose HC5.0, cannulated locking 6.5mm screws, used for proximal femoral fixation. (illustration show 4 holes right)



股骨远端锁定板

Distal Femoral Locking Plate

厚度 (Thickness) : 6.0 mm

孔距 (Holes Spacing) : 20 mm

材质 (Material) : 纯钛 (Titanium)

产品编号 Product No.	孔数 Holes	长度(mm) Length
05.6004-201/207 (L/R)	5	164
05.6004-202/208 (L/R)	7	204
05.6004-203/209 (L/R)	9	244
05.6004-204/210 (L/R)	11	284
05.6004-205/211 (L/R)	13	324

注: 选用HC5.0, HA4.5金属接骨螺钉, 适用于股骨远端外侧骨折。(图示为7孔右)

Note: choose HC5.0, HA4.5 screws, used for lateral distal femoral fixation. (illustration show 7 holes right)



胫骨平台外侧锁定板

Tibial Plateau Lateral Locking Plate

厚度 (Thickness) : 4.6 mm
孔距 (Holes Spacing) : 19mm
材质 (Material) : 纯钛 (Titanium)

产品编号 Product No.	孔数 Holes	长度(mm) Length
05.6019-01/07 (L/R)	3	116
05.6019-02/08 (L/R)	5	154
05.6019-03/09 (L/R)	7	192
05.6019-04/10 (L/R)	9	230
05.6019-05/11 (L/R)	11	268

注: 选用HC4.0, HC5.0, HA4.5金属接骨螺钉,适用于胫骨平台骨折。
(图示为5孔左)

Note: choose HC4.0, HC5.0, HA4.5 screws, used for tibial plateau fixation.
(illustration show 5 holes left)



胫骨平台外侧支持型锁定板A型

Tibial Plateau Lateral Locking Plate A

厚度 (Thickness) : 4mm
孔距 (Holes Spacing) : 13mm
材质 (Material) : 纯钛 (Titanium)

产品编号 Product No.	孔数 Holes	长度(mm) Length
05.5888-402/411 (L/R)	4	81
05.5888-403/412 (L/R)	5	94
05.5888-404/413 (L/R)	6	107
05.5888-405/414 (L/R)	7	120
05.5888-407/416 (L/R)	9	146
05.5888-409/418 (L/R)	11	172

注: 选用HC4.0, HA3.5金属接骨螺钉,适用于胫骨平台骨折。
(图示为9孔左)

Note: choose HC4.0, HA3.5 screws, used for tibial plateau fixation.
(illustration show 9 holes left)



胫骨近端外侧锁定板A型

Proximal Tibial Lateral Locking Plate A

厚度 (Thickness) : 5.0 mm
孔距 (Holes Spacing) : 20 mm
材质 (Material) : 纯钛 (Titanium)

产品编号 Product No.	孔数 Holes	长度(mm) Length
05.6008-31/45 (L/R)	4	120
05.6008-32/46 (L/R)	5	140
05.6008-34/48 (L/R)	7	180
05.6008-36/50 (L/R)	9	220
05.6008-38/52 (L/R)	11	260
05.6008-40/54 (L/R)	13	300

注: 选用HC5.0, HA4.5金属接骨螺钉,适用于胫骨平台骨折。
(图示为5孔右)

Note: choose HC5.0, HA4.5 screws, used for tibial plateau fixation.
(illustration show 5 holes right)



胫骨平台后柱锁定板I型

Tibial Plateau Posterior Column Locking Plate I

厚度 (Thickness) : 3.2 mm
孔距 (Holes Spacing) : 12mm
材质 (Material) : 纯钛 (Titanium)

产品编号 Product No.	孔数 Holes	长度(mm) Length
05.5896-101/111 (L/R)	3	76
05.5896-102/112 (L/R)	4	88
05.5896-103/113 (L/R)	5	100
05.5896-104/114 (L/R)	6	112
05.5896-105/115 (L/R)	7	124

注: 选用HC4.0, HA3.5金属接骨螺钉,适用于胫骨平台骨折。
(图示为7孔左)

Note: choose HC4.0, HA3.5 screws, used for tibial plateau fixation.
(illustration show 7 holes left)



胫骨平台内侧锁定板B型

Tibial Plateau Medial Locking Plate B

厚度 (Thickness) : 4.0 mm

孔距 (Holes Spacing) : 13 mm

材质 (Material) : 纯钛 (Titanium)

产品编号 Product No.	孔数 Holes	长度(mm) Length
05.5888-202/215 (L/R)	4	79
05.5888-203/216 (L/R)	5	92
05.5888-204/217 (L/R)	6	105
05.5888-205/218 (L/R)	7	118
05.5888-207/220 (L/R)	9	144
05.5888-209/222 (L/R)	11	170

注: 选用HC4.0, HA3.5金属接骨螺钉,适用于胫骨平台骨折。
(图示为6孔右)

Note: choose HC4.0, HA3.5 screws, used for tibial plateau fixation.
(illustration show 6 holes right)



胫骨远端海鸥形锁定板

Distal Tibial Seagull Locking Plate

厚度 (Thickness) : 3.2mm

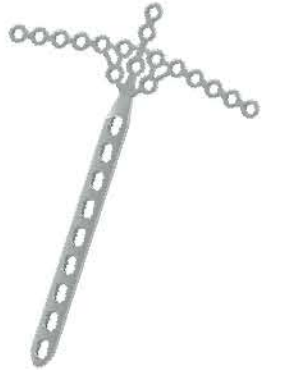
孔距 (Holes Spacing) : 13mm

材质 (Material) : 纯钛 (Titanium)

产品编号 Product No.	孔数 Holes	长度(mm) Length
05.5858-103	5	117
05.5858-105	7	143
05.5858-107	9	169
05.5858-109	11	195

注: 选用HC4.0, HA3.5金属接骨螺钉,适用于胫骨远端骨折。
(图示为9孔)

Note: choose HC4.0, HA3.5 screws, used for distal tibial fixation.
(illustration show 9 holes)



胫骨远端外侧锁定板A型

Distal Tibial Lateral Locking Plate A

厚度 (Thickness) : 3.2mm

孔距 (Holes Spacing) : 16mm

材质 (Material) : 纯钛 (Titanium)

产品编号 Product No.	孔数 Holes	长度(mm) Length
05.5876-42/54 (L/R)	5	122
05.5876-44/56 (L/R)	7	154
05.5876-46/58 (L/R)	9	186
05.5876-48/60 (L/R)	11	218
05.5876-50/62 (L/R)	13	250

注: 选用HC5.0, HA4.5金属接骨螺钉,适用于胫骨远端骨折。
(图示为7孔右)

Note: choose HC5.0, HA4.5 screws, used for distal tibial fixation.
(illustration show 7 holes right)



胫骨远端前外侧锁定板B型

Distal Tibial Front Lateral Side Locking Plate B

厚度 (Thickness) : 4.0mm

孔距 (Holes Spacing) : 16mm

材质 (Material) : 纯钛 (Titanium)

产品编号 Product No.	孔数 Holes	长度(mm) Length
05.5888-521/522 (L/R)	3	104
05.5888-502/512 (L/R)	5	136
05.5888-504/514 (L/R)	7	168
05.5888-506/516 (L/R)	9	200
05.5888-508/518 (L/R)	11	232

注: 选用HC4.0, HA3.5金属接骨螺钉,适用于胫骨远端骨折。
(图示为9孔右)

Note: choose HC4.0, HA3.5 screws, used for distal tibial fixation.
(illustration show 9 holes right)



胫骨远端前侧锁定板

Distal Tibial Front Side Locking Plate

厚度 (Thickness) : 4.2mm

孔距 (Holes Spacing) : 13mm

材质 (Material) : 纯钛 (Titanium)

产品编号 Product No.	孔数 Holes	长度(mm) Length
05.6124-101/111 (L/R)	3	82
05.6124-102/112 (L/R)	4	95
05.6124-103/113 (L/R)	5	108
05.6124-104/114 (L/R)	6	121
05.6124-105/115 (L/R)	8	147

注: 选用HC4.0, HA3.5金属接骨螺钉,适用于胫骨远端前侧骨折。
(图示为4孔左)

Note: choose HC4.0, HA3.5 screws, used for distal tibial fixation.
(illustration show 4 holes left)



胫骨远端内侧锁定板B型

Distal Tibial Medial Locking Plate B

厚度 (Thickness) : 4.2mm

孔距 (Holes Spacing) : 16mm

材质 (Material) : 纯钛 (Titanium)

产品编号 Product No.	孔数 Holes	长度(mm) Length
05.6006-103/113 (L/R)	5	145
05.6006-105/115 (L/R)	7	177
05.6006-107/117 (L/R)	9	209
05.6006-109/119 (L/R)	11	241
05.6006-110/120 (L/R)	12	257

注: 选用HC4.0, HA3.5金属接骨螺钉,适用于胫骨远端骨折。
(图示为9孔右)

Note: choose HC4.0, HA3.5 screws, used for distal tibial fixation.
(illustration show 9 holes right)



胫骨远端内侧低切迹锁定板C型

Distal Tibial Medial Locking Plate C

厚度 (Thickness) : 4.2mm

孔距 (Holes Spacing) : 13mm

材质 (Material) : 纯钛 (Titanium)

产品编号 Product No.	孔数 Holes	长度(mm) Length
05.6006-202/208 (L/R)	5	122
05.6006-203/209 (L/R)	7	148
05.6006-204/210 (L/R)	9	174
05.6006-205/211 (L/R)	11	200

注: 选用HC4.0, HA3.5金属接骨螺钉,适用于胫骨远端骨折。
(图示为9孔左)

Note: choose HC4.0, HA3.5 screws, used for distal tibial fixation.
(illustration show 9 holes left)



胫骨远端后内侧锁定板

Distal Tibial Back Medial Locking Plate

厚度 (Thickness) : 2.2mm

孔距 (Holes Spacing) : 10mm

材质 (Material) : 纯钛 (Titanium)

产品编号 Product No.	孔数 Holes	长度(mm) Length
05.5860-101/103 (L/R)	5	68
05.5860-102/104 (L/R)	7	88

注: 选用HC4.0, HA3.5金属接骨螺钉,适用于胫骨远端后内侧骨折。
(图示为5孔左)

Note: choose HC4.0, HA3.5 screws, used for distal tibial fixation.
(illustration show 5 holes left)



腓骨远端锁定板A型

Distal Fibula Locking Plate A

厚度 (Thickness) : 2.5 mm

孔距 (Holes Spacing) : 12mm

材质 (Material) : 纯钛 (Titanium)

产品编号 Product No.	孔数 Holes	长度(mm) Length
05.6010-01/11 (L/R)	3	81
05.6010-02/12 (L/R)	4	93
05.6010-03/13 (L/R)	5	105
05.6010-04/14 (L/R)	6	117
05.6010-05/15 (L/R)	7	129
05.6010-06/16 (L/R)	8	141

注: 选用HC3.5, HA3.5金属接骨螺钉, 适用于腓骨远端骨折。
(图示为5孔左)

Note: choose HC3.5, HA3.5 screws, used for distal fibula fixation.
(illustration show 5 holes left)



腓骨远端后外侧锁定板

Distal Fibula Locking Plate

厚度 (Thickness) : 2.4mm

孔距 (Holes Spacing) : 13mm

材质 (Material) : 纯钛 (Titanium)

产品编号 Product No.	孔数 Holes	长度(mm) Length
05.6105-07/17 (L/R)	3	77
05.6105-01/11 (L/R)	4	90
05.6105-02/12 (L/R)	5	103
05.6105-03/13 (L/R)	6	116
05.6105-05/15 (L/R)	8	142
05.6105-08/18 (L/R)	10	168
05.6105-06/16 (L/R)	12	194

注: 选用HC2.9, HC3.5, HA2.7, HA3.5金属接骨螺钉, 适用于腓骨远端骨折。
(图示为8孔左)

Note: choose HC2.9, HC3.5, HA2.7, HA3.5 screws, used for distal fibula fixation.
(illustration show 8 holes left)



腓骨远端前外侧锁定板B型

Distal Fibula Front Lateral Side Locking Plate B

厚度 (Thickness) : 2.2mm

孔距 (Holes Spacing) : 12 mm

材质 (Material) : 纯钛 (Titanium)

产品编号 Product No.	孔数 Holes	长度(mm) Length
05.5894-01/11 (L/R)	3	82
05.5894-02/12 (L/R)	4	94
05.5894-03/13 (L/R)	5	106
05.5894-04/14 (L/R)	6	118
05.5894-05/15 (L/R)	7	130
05.5894-06/16 (L/R)	8	142

注: 选用HC2.9, HC3.5, HA3.5金属接骨螺钉适用于腓骨远端骨折。
(图示为8孔左)

Note: choose HC2.9, HC3.5, HA3.5 screws, used for distal fibula fixation.
(illustration show 8 holes left)



跟骨锁定接骨板

Calcaneous Locking Plate

厚度 (Thickness) : 1.5mm

材质 (Material) : 纯钛 (Titanium)

产品编号 Product No.	孔数 Holes	长度(mm) Length
05.5880-101/102 (L/R)	8	53
05.5881-103/104 (L/R)	12	59
05.5881-101/102 (L/R)	12	68

注: 小、中、大号选用HC3.5, HC4.0, HB4.0 金属接骨螺钉, 适用于跟骨骨折。

Note: choose HC3.5, HC4.0, HB4.0 screws, used for calcaneous fixation.



小号



中号



大号

肱骨直形锁定板A型

Humerus Limited Locking Plate A

厚度 (Thickness) : 3.6mm

孔距 (Holes Spacing) : 13mm

材质 (Material) : 纯钛 (Titanium)

产品编号 Product No.	孔数 Holes	长度(mm) Length
05.5828-101	5	79
05.5828-102	6	92
05.5828-103	7	105
05.5828-104	8	118
05.5828-105	9	131
05.5828-106	10	144
05.5828-107	12	170

注: 选用HC3.5, HC4.0, HA3.5金属接骨螺钉,适用于肱骨干骨折。
(图示为7孔)

Note: choose HC3.5, HC4.0, HA3.5 screws, used for humerus shaft fixation.(illustration show 7 holes)



尺桡骨直形锁定板A型

Ulna & Radius Limited Locking Plate A

厚度 (Thickness) : 3.6 mm

孔距 (Holes Spacing) : 13mm

材质 (Material) : 纯钛 (Titanium)

产品编号 Product No.	孔数 Holes	长度(mm) Length
05.5830-301	5	79
05.5830-302	6	92
05.5830-303	7	105
05.5830-304	8	118
05.5830-305	9	131
05.5830-306	10	144
05.5830-307	12	170

注: 选用HC3.5, HA3.5金属接骨螺钉,适用于尺桡骨骨折。
(图示为7孔)

Note: choose HC3.5, HA3.5 screws, used for ulna & radius fixation.(illustration show 7 holes)



1/3圆锁定板A型

1/3 Tubular Locking Plate A

厚度 (Thickness) : 2.2mm

孔距 (Holes Spacing) : 13mm

材质 (Material) : 纯钛 (Titanium)

产品编号 Product No.	孔数 Holes	长度(mm) Length
05.5826-02	5	71
05.5826-03	6	84
05.5826-04	7	97
05.5826-05	8	110
05.5826-07	10	136
05.5826-09	12	162

注: 选用HC3.5, HA3.5金属接骨螺钉,适用于尺桡骨、腓骨骨折。
(图示为8孔)

Note: choose HC3.5, HA3.5 screws, used for ulna & radius, fibula fixation.(illustration show 8 holes)



重建锁定板A型

Reconstruction Locking Plate A

厚度 (Thickness) : 3.0 mm

孔距 (Holes Spacing) : 13 mm

材质 (Material) : 纯钛 (Titanium)

产品编号 Product No.	孔数 Holes	长度(mm) Length
05.5836-02	5	66
05.5836-03	6	79
05.5836-04	7	92
05.5836-05	8	105
05.5836-06	9	118
05.5836-07	10	131
05.5836-09	12	157
05.5836-11	14	183
05.5836-13	16	209

注: 选用HC3.5, HC4.0, HA3.5金属接骨螺钉, 适用于锁骨、尺骨、腓骨、骨盆骨折。(图示为7孔)

Note: choose HC3.5, HC4.0, HA3.5 screws, Used for clavicle, ulna, fibula, pelvis fixation. (illustration show 7 holes)



股骨直形锁定板A型

Femoral Limited Locking Plate A

厚度 (Thickness) : 6.0mm

孔距 (Holes Spacing) : 18mm

材质 (Material) : 纯钛 (Titanium)

产品编号 Product No.	孔数 Holes	长度(mm) Length
05.5834-101	7	152
05.5834-102	8	170
05.5834-103	9	188

注: 选用HC5.0, HA4.5金属接骨螺钉,适用于股骨干骨折。
(图示为8孔)

Note: choose HC5.0, HA4.5 screws, used for femoral shaft fixation.
(illustration show 8 holes)



股骨弧形锁定板

Arc Femoral Locking Plate

厚度 (Thickness) : 6.0 mm

孔距 (Holes Spacing) : 18mm

材质 (Material) : 纯钛 (Titanium)

产品编号 Product No.	孔数 Holes	长度(mm) Length
05.5818-102	10	203
05.5818-107	11	221
05.5818-103	12	239
05.5818-104	14	275
05.5818-105	16	311

注: 选用HC5.0, HA4.5金属接骨螺钉,适用于股骨干骨折。
(图示为14孔)

Note: choose HC5.0, HA4.5 screws, used for femoral shaft fixation.
(illustration show 14 holes)

胫骨直形锁定板A型

Tibia Limited Locking Plate A

厚度 (Thickness) : 5.2mm

孔距 (Holes Spacing) : 18mm

材质 (Material) : 纯钛 (Titanium)

产品编号 Product No.	孔数 Holes	长度(mm) Length
05.5832-101	6	121
05.5832-102	7	139
05.5832-103	8	157
05.5832-104	9	175
05.5832-105	10	193
05.5832-106	11	211
05.5832-107	12	229
05.5832-108	14	265

注: 选用HC5.0, HA4.5金属接骨螺钉,适用于胫骨干骨折。
(图示为8孔)

Note: choose HC5.0, HA4.5 screws, used for tibia shaft fixation.
(illustration show 8 holes)



骨盆锁定板A型

Pelvic Locking Plate A

厚度 (Thickness) : 3.0mm

孔距 (Holes Spacing) : 12 mm

材质 (Material) : 纯钛 (Titanium)

产品编号 Product No.	孔数 Holes	长度(mm) Length
05.5874-31	5	65
05.5874-32	6	77
05.5874-33	7	87
05.5874-34	8	98
05.5874-36	10	116
05.5874-38	12	129

注: 选用HC3.5, HC4.0, HB4.0金属接骨螺钉,适用于骨盆骨折。
(图示为8孔)

Note: choose HC3.5, HC4.0, HB4.0 screws, used for pelvic fixation.
(illustration show 8 holes)



2.0锁定螺钉

2.0mm Locking Screw

直径 (Diameter) : 2.0mm

材质 (Material) : 钛合金 (Titanium alloy)

产品编号 Product No.	直径 Diameter	长度(mm) Length
05.5080-01	2.0	6
05.5080-02	2.0	8
05.5080-03	2.0	10
05.5080-04	2.0	12
05.5080-05	2.0	14
05.5080-06	2.0	16
05.5080-07	2.0	18
05.5080-08	2.0	20
05.5080-09	2.0	22
05.5080-10	2.0	24
05.5080-11	2.0	26
05.5080-12	2.0	28
05.5080-13	2.0	30

注: 配T6起子、 ϕ 1.5骨钻。

Note: choose T6 screwdriver, ϕ 1.5 drill bit.



2.5锁定螺钉

2.5mm Locking Screw

直径 (Diameter) : 2.5mm

材质 (Material) : 钛合金 (Titanium alloy)

产品编号 Product No.	直径 Diameter	长度(mm) Length
05.5082-02	2.5	8
05.5082-03	2.5	10
05.5082-04	2.5	12
05.5082-05	2.5	14
05.5082-06	2.5	16
05.5082-07	2.5	18
05.5082-08	2.5	20
05.5082-09	2.5	22
05.5082-10	2.5	24
05.5082-11	2.5	26
05.5082-12	2.5	28
05.5082-13	2.5	30

注: 配T8起子、 ϕ 2.0骨钻。

Note: choose T8 screwdriver, ϕ 2.0 drill bit.



2.9锁定螺钉

2.9mm Locking Screw

直径 (Diameter) : 2.9mm

材质 (Material) : 钛合金 (Titanium alloy)

产品编号 Product No.	直径 Diameter	长度(mm) Length
05.5102-03	2.9	10
05.5102-04	2.9	12
05.5102-05	2.9	14
05.5102-06	2.9	16
05.5102-07	2.9	18
05.5102-08	2.9	20
05.5102-09	2.9	22
05.5102-10	2.9	24
05.5102-11	2.9	26
05.5102-12	2.9	28
05.5102-13	2.9	30
05.5102-14	2.9	32
05.5102-16	2.9	34
05.5102-17	2.9	36
05.5102-18	2.9	38
05.5102-19	2.9	40
05.5102-27	2.9	42
05.5102-28	2.9	44

注: 配T8起子、 ϕ 2.2骨钻。

Note: choose T8 screwdriver, ϕ 2.2 drill bit.



3.5锁定螺钉

3.5mm Locking Screw

直径 (Diameter) : 3.5mm

材质 (Material) : 钛合金 (Titanium alloy)

产品编号 Product No.	直径 Diameter	长度(mm) Length
05.5084-02	3.5	12
05.5084-03	3.5	14
05.5084-04	3.5	16
05.5084-05	3.5	18
05.5084-06	3.5	20
05.5084-07	3.5	22
05.5084-08	3.5	24
05.5084-09	3.5	26
05.5084-10	3.5	28
05.5084-11	3.5	30
05.5084-12	3.5	32
05.5084-13	3.5	34
05.5084-14	3.5	36
05.5084-15	3.5	38
05.5084-16	3.5	40
05.5084-17	3.5	42
05.5084-18	3.5	44
05.5084-19	3.5	46
05.5084-20	3.5	48
05.5084-21	3.5	50

注: 配T15 / SW2.5起子、 ϕ 2.8骨钻。

Note: choose T15/SW2.5 screwdriver, ϕ 2.8 drill bit.



4.0锁定螺钉

4.0mm Locking Screw

直径 (Diameter) : 4.0mm

材质 (Material) : 钛合金 (Titanium alloy)

产品编号 Product No.	直径 Diameter	长度(mm) Length
05.5103-02	4.0	12
05.5103-03	4.0	14
05.5103-04	4.0	16
05.5103-05	4.0	18
05.5103-06	4.0	20
05.5103-07	4.0	22
05.5103-08	4.0	24
05.5103-09	4.0	26
05.5103-10	4.0	28
05.5103-11	4.0	30
05.5103-12	4.0	32
05.5103-13	4.0	34
05.5103-14	4.0	36
05.5103-15	4.0	38
05.5103-16	4.0	40
05.5103-17	4.0	42
05.5103-18	4.0	44
05.5103-19	4.0	46
05.5103-20	4.0	48
05.5103-21	4.0	50
05.5103-22	4.0	52
05.5103-23	4.0	54
05.5103-24	4.0	56
05.5103-25	4.0	58
05.5103-26	4.0	60
05.5103-27	4.0	65
05.5103-28	4.0	70
05.5103-29	4.0	75
05.5103-30	4.0	80

注: 配T15 / SW2.5起子、 ϕ 3.2骨钻。

Note: choose T15/SW2.5 screwdriver, ϕ 3.2 drill bit.



5.0锁定螺钉

5.0mm Locking Screw

直径 (Diameter) : 5.0mm

材质 (Material) : 钛合金 (Titanium alloy)

产品编号 Product No.	直径 Diameter	长度(mm) Length
05.5090-02	5.0	16
05.5090-03	5.0	18
05.5090-04	5.0	20
05.5090-05	5.0	22
05.5090-06	5.0	24
05.5090-07	5.0	26
05.5090-08	5.0	28
05.5090-09	5.0	30
05.5090-10	5.0	32
05.5090-11	5.0	34
05.5090-12	5.0	36
05.5090-13	5.0	38
05.5090-14	5.0	40
05.5090-15	5.0	42
05.5090-16	5.0	44
05.5090-17	5.0	46
05.5090-18	5.0	48
05.5090-19	5.0	50
05.5090-20	5.0	52
05.5090-21	5.0	54
05.5090-22	5.0	56
05.5090-23	5.0	58
05.5090-24	5.0	60
05.5090-25	5.0	65
05.5090-26	5.0	70
05.5090-27	5.0	75
05.5090-28	5.0	80
05.5090-29	5.0	85
05.5090-30	5.0	90
05.5090-31	5.0	95
05.5090-32	5.0	100

注: 配T20/ SW3.5起子、 ϕ 4.3骨钻。

Note: choose T20/SW3.5 screwdriver, ϕ 4.3 drill bit.



6.5空心锁定螺钉

6.5mm Cannulated Locking Screw

直径 (Diameter) : 6.5mm

材质 (Material) : 钛合金 (Titanium alloy)

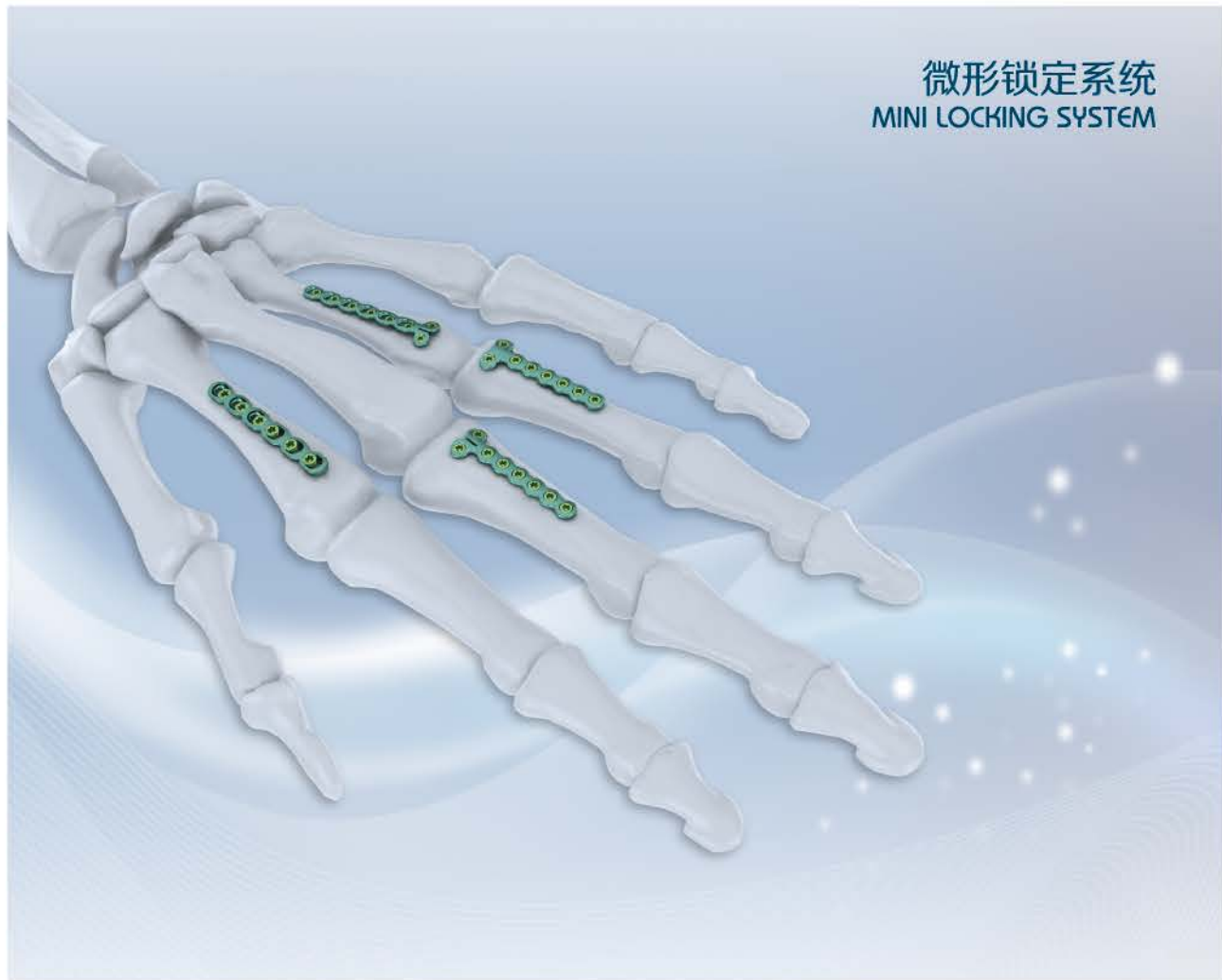
产品编号 Product No.	直径 Diameter	长度(mm) Length
05.5358-111	6.5	50
05.5358-112	6.5	55
05.5358-113	6.5	60
05.5358-101	6.5	65
05.5358-102	6.5	70
05.5358-103	6.5	75
05.5358-104	6.5	80
05.5358-105	6.5	85
05.5358-106	6.5	90
05.5358-107	6.5	95
05.5358-108	6.5	100
05.5358-109	6.5	105
05.5358-110	6.5	110

注: 配SW4.0、 ϕ 2.5导针、 ϕ 5.0X内径 ϕ 2.6空心钻。

Note: choose SW4.0 screwdriver, ϕ 2.5 guide pin, ϕ 5.0 \times ϕ 2.6 cannulated drill bit.



微形锁定系统 MINI LOCKING SYSTEM



2.0mm T形锁定板 I 型

2.0mm T-Shaped Locking Plate I

厚度 (Thickness) : 1.5mm

孔距 (Holes Spacing) : 6mm

材质 (Material) : 纯钛 (Titanium)

产品编号 Product No.	孔数 Holes	长度(mm) Length
05.5842-1001	3	24
05.5842-1002	4	30
05.5842-1003	5	36
05.5842-1004	6	42
05.5842-1005	8	54

注: 选用HC2.0、HA2.0接骨螺钉,适用于指掌骨骨折。(图示为6孔)

Note: choose HC2.0、HA2.0 screws, used for metacarpal fixation.
(illustration show 6 holes)



2.0mm T形锁定板 II 型

2.0mm T-Shaped Locking Plate II

厚度 (Thickness) : 1.5mm

孔距 (Holes Spacing) : 6mm

材质 (Material) : 纯钛 (Titanium)

产品编号 Product No.	孔数 Holes	长度(mm) Length
05.5842-1101	3	24
05.5842-1102	4	30
05.5842-1103	5	36
05.5842-1104	6	42
05.5842-1105	8	54

注: 选用HC2.0、HA2.0接骨螺钉,适用于指掌骨骨折。(图示为6孔)

Note: choose HC2.0、HA2.0 screws, used for metacarpal fixation.
(illustration show 6 holes)



2.0mm重建形锁定板 I 型

2.0mm Reconstruction Locking Plate I

厚度 (Thickness) : 1.5mm

孔距 (Holes Spacing) : 6mm

材质 (Material) : 纯钛 (Titanium)

产品编号 Product No.	孔数 Holes	长度(mm) Length
05.5822-401	3	17
05.5822-402	4	23
05.5822-403	5	29
05.5822-404	6	35
05.5822-405	8	47

注: 选用HC2.0、HA2.0接骨螺钉,适用于指掌骨骨折。(图示为6孔)
Note: choose HC2.0、HA2.0 screws, used for metacarpal fixation.
(illustration show 6 holes)



2.5mm双孔T形锁定板 II 型

2.5mm T-Shaped Locking Plate II

厚度 (Thickness) : 1.5mm

孔距 (Holes Spacing) : 7mm

材质 (Material) : 纯钛 (Titanium)

产品编号 Product No.	孔数 Holes	长度(mm) Length
05.5842-1301	3	28
05.5842-1302	4	35
05.5842-1303	5	42
05.5842-1304	6	49
05.5842-1305	7	56
05.5842-1306	8	63

注: 选用HC2.5、HA2.5接骨螺钉,适用于指掌骨骨折。(图示为6孔)
Note: choose HC2.5、HA2.5 screws, used for metacarpal fixation.
(illustration show 6 holes)



2.5mm T形锁定板 I 型

2.5mm T-Shaped Locking Plate I

厚度 (Thickness) : 1.5mm

孔距 (Holes Spacing) : 7mm

材质 (Material) : 纯钛 (Titanium)

产品编号 Product No.	孔数 Holes	长度(mm) Length
05.5842-1201	3	28
05.5842-1202	4	35
05.5842-1203	5	42
05.5842-1204	6	49
05.5842-1205	7	56
05.5842-1206	8	63

注: 选用HC2.5、HA2.5接骨螺钉,适用于指掌骨骨折。(图示为6孔)
Note: choose HC2.5、HA2.5 screws, used for metacarpal fixation.
(illustration show 6 holes)



2.5mm重建形锁定板 I 型

2.5mm Reconstruction Locking Plate I

厚度 (Thickness) : 1.5mm

孔距 (Holes Spacing) : 7mm

材质 (Material) : 纯钛 (Titanium)

产品编号 Product No.	孔数 Holes	长度(mm) Length
05.5822-501	3	22
05.5822-502	4	29
05.5822-503	5	36
05.5822-504	6	43
05.5822-505	7	50
05.5822-506	8	57

注: 选用HC2.5、HA2.5接骨螺钉,适用于指掌骨骨折。(图示为6孔)
Note: choose HC2.5、HA2.5 screws, used for metacarpal fixation.
(illustration show 6 holes)





足踝系列
FOOT BONE PLATE SYSTEM

直板、小直板

Calcaneus Straight Locking Plate

厚度 (Thickness) : 1.5 mm

材质 (Material) : 纯钛 (Titanium)

产品编号 Product No.	孔数 Holes	长度(mm) Length
05.5820-201_BN	2	18.5
05.5820-203_BP	4	35.6

注: 2孔选用HC2.9金属接骨螺钉, 适用于足部相邻关节的融合固定。

4孔选用HA2.7, HC2.9金属接骨螺钉, 适用于跖骨骨折及跖跗关节融合。

Note: choose HC2.9 screws for 2 holes' used for adjacent arthrodesis of foot bone. choose HA2.7, HC2.9 screws for 4 holes', used for metatarsus fracture and tarsometatarsal arthrodesis.



X形板

X-Shaped Locking Plate

厚度 (Thickness) : 1.5 mm

材质 (Material) : 纯钛 (Titanium)

产品编号 Product No.	孔数 Holes	长度(mm) Length
05.5822-601_BQ	4	29.5

注: 选用HC3.5金属接骨螺钉, 适用于跟骰关节融合。(图示为4孔)

Note: choose HC3.5 screws, used for calcaneocuboid arthrodesis. (illustration show 4 holes)



第一跖骨近端解剖板

Proximal First Metatarsus Anatomic Locking Plate

厚度 (Thickness) : 1.5 mm

材质 (Material) : 纯钛 (Titanium)

产品编号 Product No.	孔数 Holes	长度(mm) Length
05.5864-101_AN (L)	3	38.6
05.5864-102_AP (L)	4	45.1
05.5864-103_AR (L)	5	51.6
05.5864-104_AT (L)	6	58.1
05.5864-105_AO (R)	3	38.6
05.5864-106_AQ (R)	4	45.1
05.5864-107_AS (R)	5	51.6
05.5864-108_AU (R)	6	58.1

注: 选用HA3.5, HC3.5金属接骨螺钉, 适用于第一跖骨近端骨折。(图示为3孔右)

Note: choose HA3.5, HC3.5 screws, used for proximal first metatarsus fracture. (illustration show 3 holes right)



第一跖楔融合板

First Metatarsus & Wedge Arthrodesis Locking Plate

厚度 (Thickness) : 1.8 mm

材质 (Material) : 纯钛 (Titanium)

产品编号 Product No.	孔数 Holes	长度(mm) Length
05.5822-701_BR	8	60

注: 选用HA2.7, HC2.9金属接骨螺钉, 适用于第一跖楔关节融合。(图示为8孔)

Note: choose HA2.7, HC2.9 screws, used for first metatarsus & wedge arthrodesis. (illustration show 8 holes)



第一跖趾融合板

First Metatarsophalangeal Arthrodesis Locking Plate

厚度 (Thickness) : 1.8 mm

材质 (Material) : 纯钛 (Titanium)

产品编号 Product No.	孔数 Holes	长度(mm) Length
05.5864-201_AV (L)	7	55.3
05.5864-202_AW (R)	7	55.3

注: 选用HA2.7, HC2.9金属接骨螺钉, 适用于第一跖趾关节融合。(图示为7孔)

Note: choose HA2.7, HC2.9 screws, used for first metatarsophalangeal arthrodesis. (illustration show 7 holes)



跖骨T形板

Metatarsus T-Shaped Locking Plate

厚度 (Thickness) : 1.5 mm

材质 (Material) : 纯钛 (Titanium)

产品编号 Product No.	孔数 Holes	长度(mm) Length
05.5842-1401_AA	2	27.4
05.5842-1402_AB	3	33.9
05.5842-1403_AC	4	40.4
05.5842-1404_AD	5	47
05.5842-1405_AE	6	53.7

注: 选用HA2.7, HC2.9金属接骨螺钉, 适用于跖骨骨折。(图示为5孔)

Note: choose HA2.7, HC2.9 screws, used for metatarsus fracture. (illustration show 5 holes)



第五跖骨钩板

Fifth Metatarsal Hook Plate

厚度 (Thickness) : 1.5mm

材质 (Material) : 纯钛 (Titanium)

产品编号 Product No.	长度(mm) Length
05.5552-101/102 (L/R)	47.7

注: 选用HA2.7, HC2.9金属接骨螺钉, 适用于跖骨骨折。

Note: choose HA2.7, HC2.9 screws, used for Metatarsal bone fixation.



跟骨前突微创解剖板

Calcaneus Anterior Convex Minimally Invasive Anatomical Plate

厚度 (Thickness) : 1.8mm

材质 (Material) : 纯钛 (Titanium)

产品编号 Product No.	孔数 Holes	长度(mm) Length
05.5862-201S_AF (L)	3 (小号)	46
05.5862-202S_AH (R)	3 (小号)	46
05.5862-203L_AG (L)	3 (大号)	50.8
05.5862-204L_AI (R)	3 (大号)	50.8

注: 选用HC3.5金属接骨螺钉, 适用于跟骨前突骨折。(图示为小号)

Note: choose HC3.5 screws, used for calcaneus anterior convex fracture. (illustration show small size)



跟骨结合型微创解剖板

Calcaneus Combined Minimally Invasive Anatomical Plate

厚度 (Thickness) : 1.8mm

材质 (Material) : 纯钛 (Titanium)

产品编号 Product No.	孔数 Holes	长度(mm) Length
05.5866-201S_BB (L)	6 (小号)	56.3
05.5866-202L_BD (L)	7 (大号)	67.8
05.5866-203S_BC (R)	6 (小号)	56.3
05.5866-204L_BE (R)	7 (大号)	67.8

注: 选用HC3.5金属接骨螺钉, 适用于跟骨骨折。(图示为6孔)

Note: choose HC3.5 screws, used for calcaneus fracture. (illustration show 6 holes)



跟骨后粗隆微创解剖板

Calcaneus Posterior Tuberosity Minimally Invasive Anatomical Plate

厚度 (Thickness) : 1.8mm

材质 (Material) : 纯钛 (Titanium)

产品编号 Product No.	孔数 Holes	长度(mm) Length
05.5866-101_AX (L)	3	39.8
05.5866-102_AZ (L)	4	49.3
05.5866-103_AY (R)	3	39.8
05.5866-104_BA (R)	4	49.3

注: 选用HC3.5金属接骨螺钉, 适用于跟骨后粗隆骨折。(图示为4孔右)

Note: choose HC3.5 screws, used for calcaneus posterior tuberosity fracture. (illustration show 4 holes right)



跟骨环形解剖板

Anatomic Calcaneus Locking Plate

厚度 (Thickness) : 2.0mm

材质 (Material) : 纯钛 (Titanium)

产品编号 Product No.	孔数 Holes	长度(mm) Length
05.5881-201S_BH (L)	11 (小号)	60.3
05.5881-202M_BI (L)	11 (中号)	67.4
05.5881-203L_BJ (L)	11 (大号)	72.6
05.5881-301S_BK (R)	11 (小号)	60.3
05.5881-302M_BL (R)	11 (中号)	67.4
05.5881-303L_BM (R)	11 (大号)	72.6

注: 选用HC3.5金属接骨螺钉, 适用于跟骨骨折。(图示为中号)

Note: choose HC3.5 screws, used for calcaneus fracture.
(illustration show medium size)

骰骨板

Cuboid Locking Plate

厚度 (Thickness) : 1.5mm

材质 (Material) : 纯钛 (Titanium)

产品编号 Product No.	孔数 Holes	长度(mm) Length
05.5880-201_BF (L)	10	27.9*29.5
05.5880-202_BG (R)	10	27.9*29.5

注: 选用HC2.9金属接骨螺钉, 适用于骰骨骨折。(图示为10孔)

Note: choose HC2.9 screws, used for cuboid fracture.
(illustration show 10 holes)

距骨板

Talus Locking Plate

厚度 (Thickness) : 1.5mm

材质 (Material) : 纯钛 (Titanium)

产品编号 Product No.	孔数 Holes	长度(mm) Length
05.5862-101_AJ	5	40.7

注: 选用HC2.9金属接骨螺钉, 适用于距骨骨折。(图示为5孔)

Note: choose HC2.9 screws, used for talus fracture.
(illustration show 5 holes)

舟骨板

Scaphoid Locking Plate

厚度 (Thickness) : 1.5mm

材质 (Material) : 纯钛 (Titanium)

产品编号 Product No.	孔数 Holes	长度(mm) Length
05.5862-103_AL (L)	7	45.6
05.5862-104_AM (R)	7	45.6

注: 选用HC2.9金属接骨螺钉, 适用于舟骨骨折。(图示为7孔右)

Note: choose HC2.9 screws, used for scaphoid fracture.
(illustration show 7 holes right)

小儿系列 PEDIATRIC SYSTEM



弹性髓引针

Elastic Nail

材质 (Material) : 钛合金 (Titanium)

产品编号 Product No.	直径 Diameter	长度(mm) Length
05.7022-065	1.5	440
05.7022-165	2.0	440
05.7022-265	2.5	440
05.7022-365	3.0	440
05.7022-465	3.5	440
05.7022-565	4.0	440

注: 适用小儿四肢骨折, 成人腓骨骨折。

Note: Used for Pediatric Limbs fixation, Adult Fibula Fracutre.



封帽

End Cap

材质 (Material) : 钛合金 (titanium alloy)

产品编号 Product No.	长度(mm) Length
05.7062-001	14
05.7062-002	25



2.7mm股骨近端锁定接骨板 (120°)

2.7mm Proximal Femoral Locking Plate 120°

厚度 (Thickness) : 2.5mm

孔距 (Holes Spacing) : 10mm

材质 (Material) : 纯钛 (Titanium)

产品编号 Product No.	孔数 Holes	长度(mm) Length
05.5858-401	3	54
05.5858-402	4	64
05.5858-403	5	74
05.5858-404	6	84
05.5858-405	7	94
05.5858-406	8	104
05.5858-407	9	114
05.5858-408	10	124
05.5858-409	11	134
05.5858-410	12	144

注: 选用HC2.9, HA2.7金属接骨螺钉,适用于小儿股骨近端骨折。
(图示为4孔)

Note: choose HC2.9, HA2.7 screws, used for Pediatric proximal femoral fixation.(illustration show 4 holes)



3.5mm股骨近端锁定接骨板 (120°)

3.5mm Proximal Femoral Locking Plate 120°

厚度 (Thickness) : 3.2mm

孔距 (Holes Spacing) : 13mm

材质 (Material) : 纯钛 (Titanium)

产品编号 Product No.	孔数 Holes	长度(mm) Length
05.5858-211	3	67
05.5858-212	4	80
05.5858-213	5	93
05.5858-214	6	106
05.5858-215	7	119
05.5858-216	8	132
05.5858-217	9	145
05.5858-218	10	158

注: 选用HC3.5, HC4.0, HA3.5金属接骨螺钉,适用小儿股骨近端骨折。
(图示为5孔)

Note: choose HC3.5, HC4.0, HA3.5 screws, used for Pediatric proximal femoral fixation.(illustration show 5 holes)



3.5mm股骨近端锁定接骨板 (110°)

3.5mm Proximal Femoral Locking Plate 110°

厚度 (Thickness) : 3.2mm

孔距 (Holes Spacing) : 13mm

材质 (Material) : 纯钛 (Titanium)

产品编号 Product No.	孔数 Holes	长度(mm) Length
05.5858-201	3	80
05.5858-202	4	93
05.5858-203	5	106
05.5858-204	6	119
05.5858-205	7	132
05.5858-206	8	145
05.5858-207	9	158
05.5858-208	10	171

注: 选用HC3.5, HC4.0, HA3.5金属接骨螺钉,适用小儿股骨近端骨折。
(图示为4孔)

Note: choose HC3.5, HC4.0, HA3.5 screws, used for Pediatric proximal femoral fixation.(illustration show 4 holes)



5.0mm股骨近端锁定接骨板 (110°)

5.0mm Proximal Femoral Locking Plate 110°

厚度 (Thickness) : 4.2mm

孔距 (Holes Spacing) : 16mm

材质 (Material) : 纯钛 (Titanium)

产品编号 Product No.	孔数 Holes	长度(mm) Length
05.5858-601	3	99
05.5858-602	4	115
05.5858-603	5	131
05.5858-604	6	147
05.5858-605	7	163
05.5858-606	8	179
05.5858-607	9	195
05.5858-608	10	211

注: 选用HC5.0, HA4.5金属接骨螺钉,适用小儿股骨近端骨折。
(图示为4孔)

Note: choose HC5.0, HA4.5 screws, used for Pediatric proximal femoral fixation.(illustration show 4 holes)



5.0mm股骨近端锁定接骨板 (120°)

5.0mm Proximal Femoral Locking Plate 120°

厚度 (Thickness) : 4.2mm

孔距 (Holes Spacing) : 16mm

材质 (Material) : 纯钛 (Titanium)

产品编号 Product No.	孔数 Holes	长度(mm) Length
05.5858-301	3	83
05.5858-302	4	99
05.5858-303	5	115
05.5858-304	6	131
05.5858-305	7	147
05.5858-306	8	163
05.5858-307	9	179
05.5858-308	10	195
05.5858-309	11	211
05.5858-310	12	227

注: 选用HC5.0, HA4.5金属接骨螺钉, 适用小儿股骨近端骨折。
(图示为5孔)

Note: choose HC5.0, HA4.5 screws, used for Pediatric proximal femoral fixation.(illustration show 5 holes)



2.9mm重建形锁定板A型

2.9mm Reconstruction Locking Plate A

厚度 (Thickness) : 1.5mm

孔距 (Holes Spacing) : 8 mm

材质 (Material) : 纯钛 (Titanium)

产品编号 Product No.	孔数 Holes	长度(mm) Length
05.5909-00201	4	33
05.5909-00202	5	41
05.5909-00203	6	49
05.5909-00204	7	57
05.5909-00205	8	65
05.5909-00207	10	81

注: 选用HA2.7, HC2.9接骨螺钉, 适用于小儿骨折。(图示为6孔)

Note: choose HA2.7, HC2.9 screws, used for Pediatric fixation.
(illustration show 6 holes)



5.0mm股骨近端锁定接骨板 (150°)

5.0mm Proximal Femoral Locking Plate 140°

厚度 (Thickness) : 4.2mm

孔距 (Holes Spacing) : 16mm

材质 (Material) : 纯钛 (Titanium)

产品编号 Product No.	孔数 Holes	长度(mm) Length
05.5858-501	3	79
05.5858-502	4	95
05.5858-503	5	111
05.5858-504	6	127
05.5858-505	7	143
05.5858-506	8	159
05.5858-507	9	175
05.5858-508	10	191
05.5858-509	11	207
05.5858-510	12	223

注: 选用HC5.0, HA4.5金属接骨螺钉, 适用小儿股骨近端骨折。
(图示为4孔)

Note: choose HC5.0, HA4.5 screws, used for Pediatric proximal femoral fixation.(illustration show 4 holes)



2.9mm尺桡骨直形接骨板B型

2.9mm Ulna & Radius Limited Locking Plate B

厚度 (Thickness) : 2.2mm

孔距 (Holes Spacing) : 10mm

材质 (Material) : 纯钛 (Titanium)

产品编号 Product No.	孔数 Holes	长度(mm) Length
05.5830-202	5	64
05.5830-203	6	74
05.5830-204	7	84
05.5830-205	8	94
05.5830-206	9	104
05.5830-210	10	114

注: 选用HA2.7, HC2.9金属接骨螺钉, 适用于小儿尺桡骨骨折。
(图示为5孔)

Note: choose HA2.7, HC2.9 screws, used for Pediatric ulna & radius shaft fixation.(illustration show 5 holes)



2.9mm T形锁定板A型

2.9mm T-Shaped Locking Plate A

厚度 (Thickness) : 1.5mm

孔距 (Holes Spacing) : 7.6mm

材质 (Material) : 纯钛 (Titanium)

产品编号 Product No.	孔数 Holes	长度(mm) Length
05.5842-02	3	32
05.5842-03	4	40
05.5842-04	5	47
05.5842-05	6	55

注: 选用HA2.7、HC2.9接骨螺钉,适用于小儿骨折。(图示为6孔)

Note: choose HA2.7, HC2.9 screws, used for Pediatric fixation. (illustration show 6 holes)



小儿内外翻畸形矫正板

Pediatric Correction Plate

厚度 (Thickness) : 2.5mm

材质 (Material) : 纯钛 (Titanium)

产品编号 Product No.	孔数 Holes	孔距(mm) Holes
05.5770-101	2	12
05.5770-102	2	14
05.5770-103	2	16

注: 选用GJYD IIII, ϕ 3.5全牙空心接骨螺钉,适用小儿股骨远端胫骨近端骨折。

(图示为2孔)

Note: choose cannulated compression Screw full thread 3.5mm diameter, used for Pediatric distal femoral and proximal tibial fixation. (illustration show 2 holes)



2.9mm T形锁定板B型

2.9mm T-Shaped Locking Plate B

厚度 (Thickness) : 1.5 mm

孔距 (Holes Spacing) : 8mm

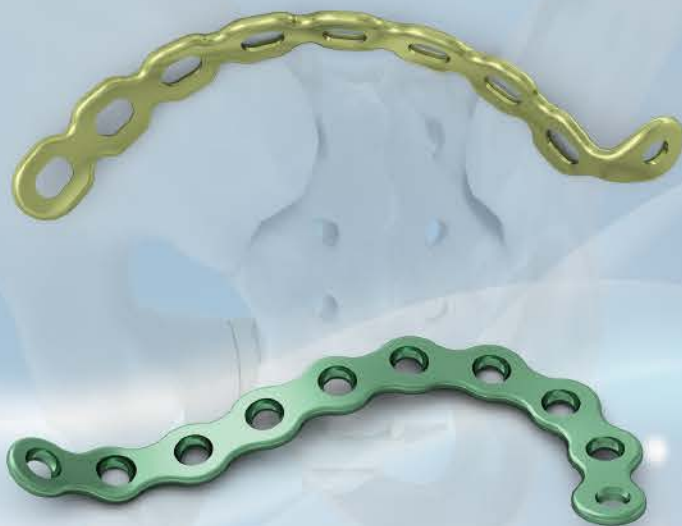
材质 (Material) : 纯钛 (Titanium)

产品编号 Product No.	孔数 Holes	长度(mm) Length
05.5842-102	3	34
05.5842-103	4	42
05.5842-104	5	50
05.5842-105	6	58
05.5842-106	7	66

注: 选用HA2.7、HC2.9接骨螺钉,适用于小儿骨折。(图示为6孔)

Note: choose HA2.7, HC2.9 screws, used for Pediatric fixation. (illustration show 6 holes)



普通板系列
 PLATE SYSTEM


S形锁骨接骨板

S - Clavicle Plate

厚度 (Thickness) : 3.0mm

孔距 (Holes Spacing) : 12mm

材质 (Material) : 纯钛 (Titanium)

产品编号 Product No.	孔数 Holes	长度(mm) Length
05.5212-03/12 (L/R)	6	70
05.5212-04/13 (L/R)	7	81
05.5212-05/14 (L/R)	8	93
05.5212-06/15 (L/R)	9	103
05.5212-07/16 (L/R)	10	115
05.5212-09/18 (L/R)	12	135

 注: 选用HA3.5, HB4.0金属接骨螺钉,适用于锁骨干骨折固定。
 (图示为10孔左)

 Note: choose HA3.5, HB4.0 screws, used for clavicle fixation.
 (illustration show 10 holes left)


肩锁钩接骨板

Clavicle Hook Plate

厚度 (Thickness) : 3.0mm

孔距 (Holes Spacing) : 11mm

材质 (Material) : 纯钛 (Titanium)

产品编号 Product No.	孔数 Holes	长度(mm) Length
05.5218-01/08 (L/R)	2	80
05.5218-02/09 (L/R)	3	91
05.5218-03/10 (L/R)	4	102
05.5218-04/11 (L/R)	5	113

 注: 选用HA3.5, HB4.0金属接骨螺钉,适用于肩锁关节脱位固定。
 (图示为5孔左)

 Note: choose HA3.5, HB4.0 screws, used for clavicle fixation.
 (illustration show 5 holes left)


肱骨近端接骨板-II型

Condylus Humerus Plate II

厚度 (Thickness) : 3.2mm
 孔距 (Holes Spacing) : 12 mm
 材质 (Material) : 纯钛 (Titanium)

产品编号 Product No.	孔数 Holes	长度(mm) Length
05.5266-01/11 (L/R)	3	79
05.5266-02/12 (L/R)	4	91
05.5266-03/13 (L/R)	5	103
05.5266-04/14 (L/R)	6	115
05.5266-05/15 (L/R)	7	127
05.5266-06/16 (L/R)	8	139

注: 选用HA3.5, HB4.0金属接骨螺钉,适用于肱骨近端骨折固定。
 (图示为6孔右)

Note: choose HA3.5, HB4.0 screws, used for proximal humerus fixation.
 (illustration show 6 holes right)



小T形接骨板

Small T-Shaped Plate

厚度 (Thickness) : 1.5mm
 孔距 (Holes Spacing) : 10.5mm
 材质 (Material) : 纯钛 (Titanium)

产品编号 Product No.	孔数 Holes	长度(mm) Length
05.5200-02	3	48
05.5200-03	4	58
05.5200-04	5	68
05.5200-05	6	79

注: 选用HA3.5, HB4.0金属接骨螺钉,适用于桡骨远端骨折固定。
 (图示为5孔)

Note: choose HA3.5, HB4.0 screws, used for distal Radius fixation.
 (illustration show 5 holes)



肱骨远端Y型接骨板

Y-Reconstruction Humerus Plate

厚度 (Thickness) : 2.2mm
 孔距 (Holes Spacing) : 12mm
 材质 (Material) : 纯钛 (Titanium)

产品编号 Product No.	孔数 Holes	长度(mm) Length
05.5268-02/10 (L/R)	4	105
05.5268-03/11 (L/R)	5	117
05.5268-04/12 (L/R)	6	129
05.5268-05/13 (L/R)	7	141

注: 选用HA3.5, HB4.0金属接骨螺钉,适用于肱骨远端骨折的固定。
 (图示为5孔右)

Note: choose HA3.5, HB4.0 screws, used for distal humerus fixation.
 (illustration show 5 holes right)



小斜T形接骨板

Small Oblique T-Shaped Plate

厚度 (Thickness) : 1.5mm
 孔距 (Holes Spacing) : 11mm
 材质 (Material) : 纯钛 (Titanium)

产品编号 Product No.	孔数 Holes	长度(mm) Length
05.5204-02	3	54
05.5204-03	4	65
05.5204-04	5	76
05.5204-05	6	87

注: 选用HA3.5, HB4.0金属接骨螺钉,适用于桡骨远端骨折固定。
 (图示为4孔)

Note: choose HA3.5, HB4.0 screws, used for distal Radius fixation.
 (illustration show 4 holes)



尺骨鹰嘴接骨板

Olecranon Plate

厚度 (Thickness) : 2.2mm

孔距 (Holes Spacing) : 12mm

材质 (Material) : 纯钛 (Titanium)

产品编号 Product No.	孔数 Holes	长度(mm) Length
05.5242-01/09 (L/R)	3	70
05.5242-02/10 (L/R)	4	82
05.5242-03/11 (L/R)	5	94
05.5242-04/12 (L/R)	6	106
05.5242-05/13 (L/R)	7	118

注: 选用HA3.5, HB4.0金属接骨螺钉,适用于尺骨近端骨折固定。
(图示为4孔右)

Note: choose HA3.5, HB4.0 screws, used for proximal ulna fixation.
(illustration show 4 holes right)



股骨近端接骨板

Proximal Femoral Plate

厚度 (Thickness) : 5.2 mm

孔距 (Holes Spacing) : 17 mm

材质 (Material) : 纯钛 (Titanium)

产品编号 Product No.	孔数 Holes	长度(mm) Length
05.5246-02/15 (L/R)	5	142
05.5246-04/17 (L/R)	7	176
05.5246-06/19 (L/R)	9	210
05.5246-08/21 (L/R)	11	244

注: 选用HA4.5, HB6.5金属接骨螺钉,适用于股骨近端、粗隆间及粗隆下骨折固定。(图示为7孔右)

Note: choose HA4.5, HB6.5 screws, used for proximal femoral and intertrochanteric and subtrochanteric fixation. (illustration show 7 holes right)



股骨远端外侧接骨板

Distal Femoral Lateral Plate

厚度 (Thickness) : 5.2mm

孔距 (Holes Spacing) : 17mm

材质 (Material) : 纯钛 (Titanium)

产品编号 Product No.	孔数 Holes	长度(mm) Length
05.5240-02/15 (L/R)	5	134
05.5240-04/17 (L/R)	7	168
05.5240-06/19 (L/R)	9	202
05.5240-08/21 (L/R)	11	236

注: 选用HA4.5, HB6.5金属接骨螺钉,适用于股骨髁粉碎骨折/股骨远端骨折固定。(图示为7孔右)

Note: choose HA4.5, HB6.5 screws, used for femoral intercondylar comminuted fracture and distal femoral fixation. (illustration show 7 holes right)



胫骨平台外侧接骨板-II型

Tibial Plateau Lateral Plate II

厚度 (Thickness) : 4.2mm

孔距 (Holes Spacing) : 16 mm

材质 (Material) : 纯钛 (Titanium)

产品编号 Product No.	孔数 Holes	长度(mm) Length
05.5234-02/15 (L/R)	5	112
05.5234-04/17 (L/R)	7	144
05.5234-06/19 (L/R)	9	176
05.5234-08/21 (L/R)	11	208

注: 选用HA4.5, HB6.5金属接骨螺钉,适用于胫骨平台外侧骨折固定。
(图示为7孔左)

Note: choose HA4.5, HB6.5 screws, used for tibial plateau lateral fixation.
(illustration show 7 holes left)



胫骨平台内侧接骨板

Tibial Plateau Medial Plates

厚度 (Thickness) : 4.2mm

孔距 (Holes Spacing) : 16mm

材质 (Material) : 纯钛 (Titanium)

产品编号 Product No.	孔数 Holes	长度(mm) Length
05.5238-02/15 (L/R)	5	126
05.5238-04/17 (L/R)	7	158
05.5238-06/19 (L/R)	9	190
05.5238-08/21 (L/R)	11	222

注: 选用HA4.5, HB6.5金属接骨螺钉,适用于胫骨平台内侧骨折固定。
(图示为7孔右)

Note: choose HA4.5, HB6.5 screws, used for tibial plateau medial fixation.
(illustration show 7 holes right)



T形接骨板

T - Buttress Plate

厚度 (Thickness) : 2.2mm

孔距 (Holes Spacing) : 16mm

材质 (Material) : 纯钛 (Titanium)

产品编号 Product No.	孔数 Holes	长度(mm) Length
05.5208-02	4	84
05.5208-03	5	100
05.5208-04	6	116
05.5208-05	7	132
05.5208-06	8	148

注: 选用HA4.5, HB6.5金属接骨螺钉,适用于胫骨平台内侧骨折固定。
(图示为8孔)

Note: choose HA4.5, HB6.5 screws, used for tibial plateau medial fixation.(illustration show 8 holes)



L形接骨板

L - Buttress Plate

厚度 (Thickness) : 3.2mm

孔距 (Holes Spacing) : 16mm

材质 (Material) : 纯钛 (Titanium)

产品编号 Product No.	孔数 Holes	长度(mm) Length
05.5226-02/10 (L/R)	4	76
05.5226-03/11 (L/R)	5	92
05.5226-04/12 (L/R)	6	108
05.5226-05/13 (L/R)	7	124
05.5226-06/14 (L/R)	8	140

注: 选用HA4.5, HB6.5金属接骨螺钉,适用于胫骨平台外侧骨折固定。
(图示为7孔左)

Note: choose HA4.5, HB6.5 screws, used for tibial plateau lateral fixation.
(illustration show 7 left)



胫骨远端外侧接骨板

Distal Tibia Lateral Plate

厚度 (Thickness) : 3.2mm

孔距 (Holes Spacing) : 16mm

材质 (Material) : 纯钛 (Titanium)

产品编号 Product No.	孔数 Holes	长度(mm) Length
05.5150-03/15 (L/R)	5	123
05.5150-05/17 (L/R)	7	155
05.5150-07/19 (L/R)	9	187
05.5150-09/21 (L/R)	11	219

注: 选用HA4.5, HB4.5金属接骨螺钉,适用于胫骨远端外侧骨折固定。
(图示为7孔右)

Note: choose HA4.5, HB4.5 screws, used for distal tibia lateral fixation.(illustration show 7 holes right)



胫骨远端内侧接骨板

Distal Tibial Medial Plate

厚度 (Thickness) : 3.2 mm

孔距 (Holes Spacing) : 16mm

材质 (Material) : 纯钛 (Titanium)

产品编号 Product No.	孔数 Holes	长度(mm) Length
05.5244-03/15 (L/R)	5	123
05.5244-05/17 (L/R)	7	155
05.5244-07/19 (L/R)	9	187
05.5244-09/21 (L/R)	11	219

注: 选用HA4.5, HB4.5金属接骨螺钉,适用于胫骨远端内侧骨折固定。
(图示为7孔左)

Note: choose HA4.5, HB4.5 screws, used for distal tibia medial fixation.
(illustration show 7 holes left)



腓骨远端外侧接骨板-I型

Distal fibula lateral plate - I

厚度 (Thickness) : 2.2mm

孔距 (Holes Spacing) : 12mm

材质 (Material) : 纯钛 (Titanium)

产品编号 Product No.	孔数 Holes	长度(mm) Length
05.5262-01/09 (L/R)	3	71
05.5262-02/10 (L/R)	4	83
05.5262-03/11 (L/R)	5	95
05.5262-04/12 (L/R)	6	107
05.5262-05/13 (L/R)	7	119
05.5262-06/14 (L/R)	8	131

注: 选用HA3.5, HB4.0金属接骨螺钉,适用于腓骨远端骨折固定。
(图示为6孔左)

Note: choose HA3.5, HB4.0 screws, used for distal fibula fixation.
(illustration show 6 holes left)



腓骨远端外侧接骨板-II型

Distal fibula lateral plate - II

厚度 (Thickness) : 2.2mm

孔距 (Holes Spacing) : 12mm

材质 (Material) : 纯钛 (Titanium)

产品编号 Product No.	孔数 Holes	长度(mm) Length
05.5264-01	3	65
05.5264-02	4	77
05.5264-03	5	89
05.5264-04	6	101
05.5264-05	7	113
05.5264-06	8	125

注: 选用HA3.5, HB4.0金属接骨螺钉,适用于腓骨远端骨折固定。
(图示为6孔)

Note: choose HA3.5, HB4.0 screws, used for distal fibula fixation.
(illustration show 6 holes)



骨盆接骨板

Pelvic Plate

厚度 (Thickness) : 3.0mm

孔距 (Holes Spacing) : 11mm

材质 (Material) : 纯钛 (Titanium)

产品编号 Product No.	孔数 Holes	长度(mm) Length
05.5230-02	5	58
05.5230-03	6	69
05.5230-04	7	79
05.5230-05	8	89
05.5230-06	9	98
05.5230-07	10	107
05.5230-09	12	121

注: 选用HA3.5, HB4.0金属接骨螺钉,适用于骨盆骨折固定。
(图示为6孔)

Note: choose HA3.5, HB4.0 screws, used for pelvic fixation.
(illustration show 6 holes)



髌臼前沿接骨板

Acetabulum Back Plate

厚度 (Thickness) : 2.2 mm

材质 (Material) : 纯钛 (Titanium)

产品编号 Product No.	孔数 Holes	长度(mm) Length
05.5156-05/12 (L/R)	8	107
05.5156-06/13 (L/R)	9	116
05.5156-07/14 (L/R)	10	125

注: 选用HB4.0金属接骨螺钉。适用于骨盆骨折, 髌臼骨折。
(图示为8孔)

Note: choose HB4.0 screws, used for pelvic fixation, acetabulum fixation.
(illustration show 8 holes)



髌臼后柱接骨板

Acetabulum Posterior Column Plate

厚度 (Thickness) : 2.2mm

材质 (Material) : 纯钛 (Titanium)

产品编号 Product No.	孔数 Holes	长度(mm) Length
05.5260-06/20 (L/R)	8	90.5
05.5260-08/22 (L/R)	10	96.5
05.5260-10/24 (L/R)	12	96.5

注: 选用HB4.0金属接骨螺钉。适用于骨盆骨折, 髌臼骨折。
(图示为10孔)

Note: choose HB4.0 screws, used for pelvic fixation, acetabulum fixation.
(illustration show 10 holes)



跟骨接骨板V型

Calcaneus Locking Plate

厚度 (Thickness) : 1.5mm

材质 (Material) : 纯钛 (Titanium)

产品编号 Product No.	孔数 Holes	长度(mm) Length
05.5254-01	10	49
05.5248-01	12	57

注: V型选用HB4.0金属接骨螺钉。适用于跟骨骨折。
(图示为12孔)

Note: choose HB4.0 screws, used for calcaneus fixation.
(illustration show 12 holes)



跟骨接骨板II型

Calcaneus Locking Plate II

厚度 (Thickness) : 1.5mm

孔距 (Holes Spacing) : 10mm

材质 (Material) : 纯钛 (Titanium)

产品编号 Product No.	孔数 Holes	长度(mm) Length
05.5252-01	13	79
05.5252-02	15	89

注: II型选用HB4.0金属接骨螺钉。适用于跟骨骨折。
(图示为15孔)

Note: choose HB4.0 screws, used for calcaneus fixation.
(illustration show 15 holes)



髌骨接骨板

Patella Plate

厚度 (Thickness) : 2.2 mm

材质 (Material) : 纯钛 (Titanium)

产品编号 Product No.	型号 Model
05.5256-01	L=35
05.5256-02	L=40
05.5256-05	L=55

注: 适用髌骨骨折。(图示为L=40)

Note: Used for patella fixation. (illustration show L=40)



环抱接骨板

Rib Plate

厚度 (Thickness) : 2.2mm

孔距 (Holes Spacing) : 10 mm

材质 (Material) : 纯钛 (Titanium)

产品编号 Product No.	孔数 Holes	长度(mm) Length
05.5280-101	4	45
05.5280-102	5	30
05.5280-103	5	45
05.5280-104	5	55
05.5280-105	6	30
05.5280-106	6	45
05.5280-107	6	55

注: 适用肋骨骨折。(图示为6孔×45)

Note: Used for Rib fixation. (illustration show 6 holes×45)



肱骨有限接触加压接骨板

Humerus Limited Compression Plate(LC-DCP)

厚度 (Thickness) : 3.2 mm

孔距 (Holes Spacing) : 12 mm

材质 (Material) : 纯钛 (Titanium)

产品编号 Product No.	孔数 Holes	长度(mm) Length
05.5772-03	6	74
05.5772-04	7	86
05.5772-05	8	98
05.5772-06	9	110
05.5772-07	10	122
05.5772-09	12	146

注: 选用HA3.5金属接骨螺钉。适用于肱骨干骨折的固定。
(图示为10孔)

Note: choose HA3.5 screws, used for humerus shaft fixation.
(illustration show 10 holes)



尺桡骨有限接触加压接骨板

Ulna & Radius Limited Compression Plate(LC-DCP)

厚度 (Thickness) : 3.2mm

孔距 (Holes Spacing) : 12 mm

材质 (Material) : 纯钛 (Titanium)

产品编号 Product No.	孔数 Holes	长度(mm) Length
05.5796-02	5	62
05.5796-03	6	74
05.5796-04	7	86
05.5796-05	8	98
05.5796-06	9	110
05.5796-07	10	122
05.5796-09	12	146

注: 选用HA3.5金属接骨螺钉。适用于尺桡骨骨折的固定。
(图示为10孔)

Note: choose HA3.5 screws, used for ulna & radius fixation.
(illustration show 10 holes)



1/3管形接骨板

1/3 Tubular Plate

厚度 (Thickness) : 1.5 mm

孔距 (Holes Spacing) : 12 mm

材质 (Material) : 纯钛 Titanium

产品编号 Product No.	孔数 Holes	长度(mm) Length
05.5776-02	5	61
05.5776-03	6	73
05.5776-04	7	85
05.5776-05	8	97
05.5776-06	9	109
05.5776-07	10	121

注: 选用HA3.5金属接骨螺钉,适用于尺骨和腓骨骨折的固定。
(图示为6孔)

Note: choose HA3.5 screws, used for ulna, fibula fixation.
(illustration show 6 holes)



重建接骨板

Reconstruction Plate

厚度 (Thickness) : 3.2 mm

孔距 (Holes Spacing) : 12mm

材质 (Material) : 纯钛 (Titanium)

产品编号 Product No.	孔数 Holes	长度(mm) Length
05.5778-02	5	60
05.5778-03	6	72
05.5778-04	7	84
05.5778-05	8	96
05.5778-06	9	108
05.5778-07	10	120
05.5778-09	12	144
05.5778-11	14	168
05.5778-13	16	192

注: 选用HA3.5, HB4.0金属接骨螺钉。适用于骨盆、锁骨干、腓骨、尺骨骨折的固定。(图示为6孔)

Note: choose HA3.5, HB4.0 screws, used for pelvis clavicle, fibula, ulna fixation. (illustration show 6 holes)



股骨有限接触加压接骨板

Femoral Limited Compression Plate (LC-DCP)

厚度 (Thickness) : 5.2mm

孔距 (Holes Spacing) : 18mm

材质 (Material) : 纯钛 (Titanium)

产品编号 Product No.	孔数 Holes	长度(mm) Length
05.5792-03	7	128
05.5792-04	8	146
05.5792-05	9	164
05.5792-06	10	182
05.5792-08	12	218
05.5792-10	14	254

注: 选用HA4.5金属接骨螺钉, 适用于股骨干骨折固定。
(图示为10孔)

Note: choose HA4.5 screws, used for femoral fixation.
(illustration show 10 holes)



胫骨有限接触加压接骨板

Tibia limited Compression Plate (LC-DCP)

厚度 (Thickness) : 4.2mm

孔距 (Holes Spacing) : 18mm

材质 (Material) : 纯钛 (Titanium)

产品编号 Product No.	孔数 Holes	长度(mm) Length
05.5788-03	7	128
05.5788-04	8	146
05.5788-05	9	164
05.5788-06	10	182
05.5788-08	12	218
05.5788-10	14	254

注: 选用HA4.5金属接骨螺钉, 适用于胫骨干骨折固定。
(图示为7孔)

Note: choose HA4.5 screws, used for tibia fixation.
(illustration show 7 holes)



2.0金属接骨螺钉(HA全牙)

2.0 Metal Bone Screw (Cortical Screw) Full Thread

直径 (Diameter) : 2.0mm

材质 (Material) : 钛合金 (titanium alloy)

产品编号 Product No.	直径 Diameter	长度(mm) Length
05.5021-01	2.0	6
05.5021-02	2.0	8
05.5021-03	2.0	10
05.5021-04	2.0	12
05.5021-05	2.0	14
05.5021-06	2.0	16
05.5021-07	2.0	18
05.5021-08	2.0	20
05.5021-09	2.0	22
05.5021-10	2.0	24
05.5021-11	2.0	26
05.5021-12	2.0	28
05.5021-13	2.0	30

注: 配T6/SW1.5起子、 ϕ 1.5骨钻。Note: choose T6/SW1.5 screwdriver, ϕ 1.5 drill bit.

2.5金属接骨螺钉(HA全牙)

2.5 Metal Bone Screw (Cortical Screw) Full Thread

直径 (Diameter) : 2.5mm

材质 (Material) : 钛合金 (titanium alloy)

产品编号 Product No.	直径 Diameter	长度(mm) Length
05.5026-01	2.5	8
05.5026-02	2.5	10
05.5026-03	2.5	12
05.5026-04	2.5	14
05.5026-05	2.5	16
05.5026-06	2.5	18
05.5026-07	2.5	20
05.5026-08	2.5	22
05.5026-09	2.5	24
05.5026-10	2.5	26
05.5026-11	2.5	28
05.5026-12	2.5	30

注: 配T8/SW1.5起子、 ϕ 2.0骨钻。Note: choose T8/SW1.5 screwdriver, ϕ 2.0 drill bit.

2.7金属接骨螺钉(HA全牙)

2.7 Metal Bone Screw (Cortical Screw) Full Thread

直径 (Diameter) : 2.7mm

材质 (Material) : 钛合金 (titanium alloy)

产品编号 Product No.	直径 Diameter	长度(mm) Length
05.5022-01	2.7	10
05.5022-02	2.7	12
05.5022-03	2.7	14
05.5022-04	2.7	16
05.5022-05	2.7	18
05.5022-06	2.7	20
05.5022-07	2.7	22
05.5022-08	2.7	24
05.5022-09	2.7	26
05.5022-10	2.7	28
05.5022-11	2.7	30

注: 配T8/SW1.5起子、 ϕ 2.0骨钻。Note: choose T8/SW1.5 screwdriver, ϕ 2.0 drill bit.

3.5金属接骨螺钉(HA全牙)

3.5 Metal Bone Screw (Cortical Screw) Full Thread

直径 (Diameter) : 3.5mm

材质 (Material) : 钛合金 (titanium alloy)

产品编号 Product No.	直径 Diameter	长度(mm) Length
05.5008-02	3.5	12
05.5008-03	3.5	14
05.5008-04	3.5	16
05.5008-05	3.5	18
05.5008-06	3.5	20
05.5008-07	3.5	22
05.5008-08	3.5	24
05.5008-09	3.5	26
05.5008-10	3.5	28
05.5008-11	3.5	30
05.5008-12	3.5	32
05.5008-13	3.5	34
05.5008-14	3.5	36
05.5008-15	3.5	38
05.5008-16	3.5	40
05.5008-17	3.5	42
05.5008-18	3.5	44
05.5008-19	3.5	46
05.5008-20	3.5	48
05.5008-21	3.5	50

注: 配T15/SW2.5起子、 ϕ 2.5骨钻。Note: choose T15/SW2.5 screwdriver, ϕ 2.5 drill bit.

4.5金属接骨螺钉(HA全牙)

4.5 Metal Bone Screw (Cortical Screw) Full Thread

直径 (Diameter) : 4.5mm

材质 (Material) : 钛合金 (titanium alloy)

产品编号 Product No.	直径 Diameter	长度(mm) Length
05.5012-05	4.5	24
05.5012-06	4.5	26
05.5012-07	4.5	28
05.5012-08	4.5	30
05.5012-09	4.5	32
05.5012-10	4.5	34
05.5012-11	4.5	36
05.5012-12	4.5	38
05.5012-13	4.5	40
05.5012-14	4.5	42
05.5012-15	4.5	44
05.5012-16	4.5	46
05.5012-17	4.5	48
05.5012-18	4.5	50
05.5012-19	4.5	52
05.5012-20	4.5	54
05.5012-21	4.5	56
05.5012-22	4.5	58
05.5012-23	4.5	60

注: 配T20/SW3.5起子、 ϕ 3.2骨钻。Note: choose T20/SW3.5 screwdriver, ϕ 3.2 drill bit.

4.0金属接骨螺钉(HB全牙)

4.0 Metal Bone Screw (Cortical Screw) Full Thread

直径 (Diameter) : 4.0mm

材质 (Material) : 钛合金 (titanium alloy)

产品编号 Product No.	直径 Diameter	长度(mm) Length
05.5030-02	4.0	12
05.5030-03	4.0	14
05.5030-04	4.0	16
05.5030-05	4.0	18
05.5030-06	4.0	20
05.5030-07	4.0	22
05.5030-08	4.0	24
05.5030-09	4.0	26
05.5030-10	4.0	28
05.5030-11	4.0	30
05.5030-12	4.0	32
05.5030-13	4.0	34
05.5030-14	4.0	36
05.5030-15	4.0	38
05.5030-16	4.0	40
05.5030-17	4.0	42
05.5030-18	4.0	44
05.5030-19	4.0	46
05.5030-20	4.0	48
05.5030-21	4.0	50

注: 配T15/SW2.5起子、 ϕ 2.5骨钻。Note: choose T15/SW2.5 screwdriver, ϕ 2.5 drill bit.

6.5金属接骨螺钉(HB全牙)

6.5 Metal Bone Screw (Cortical Screw) Full Thread

直径 (Diameter) : 6.5mm

材质 (Material) : 钛合金 (titanium alloy)

产品编号 Product No.	直径 Diameter	长度(mm) Length
05.5046-02	6.5	35
05.5046-03	6.5	40
05.5046-04	6.5	45
05.5046-05	6.5	50

注: 配T20/SW3.5起子、 ϕ 4.5骨钻。Note: choose T20/SW3.5 screwdriver, ϕ 4.5 drill bit.

6.5金属接骨螺钉(HB半牙)

6.5 Metal Bone Screw (Cortical Screw) Half Thread

直径 (Diameter) : 6.5mm

材质 (Material) : 钛合金 (titanium alloy)

产品编号 Product No.	直径 Diameter	长度(mm) Length
05.5048-05	6.5	50
05.5048-06	6.5	55
05.5048-07	6.5	60
05.5048-08	6.5	65
05.5048-09	6.5	70
05.5048-10	6.5	75
05.5048-11	6.5	80
05.5048-12	6.5	85
05.5048-13	6.5	90

注: 配T20/SW3.5起子、 ϕ 4.5骨钻。Note: choose T20/SW3.5 screwdriver, ϕ 4.5 drill bit.

微型角度板

Arc Maxillofacial Plate

厚度 (Thickness) : 1.0mm

孔距 (Holes Spacing) : 5.5mm

材质 (Material) : 纯钛 (Titanium)

产品编号 Product No.	孔数 Holes	长度(mm) Length
05.5727-01	4	24
05.5727-02	6	35
05.5727-03	8	46
05.5727-04	10	57

注: 选用HA2.0接骨螺钉, 适用于颌面骨折。(图示4孔)

Note: choose HA2.0 screws, used for maxillofacial fixation.(illustration show 4 holes)



X1微形板

X1 Maxillofacial Plate

厚度 (Thickness) : 1.0mm

材质 (Material) : 纯钛 (Titanium)

产品编号 Product No.	孔数 Holes	长度(mm) Length
05.5729-01	6	22

注: 选用HA2.0接骨螺钉, 适用于颌面骨折。(图示6孔)

Note: choose HA2.0 screws, used for maxillofacial fixation. (illustration show 6 holes)



B5微形板

B5 Maxillofacial Plate

厚度 (Thickness) : 1.0 mm

孔距 (Holes Spacing) : 6.5 mm

材质 (Material) : 纯钛 (Titanium)

产品编号 Product No.	孔数 Holes	长度(mm) Length
05.5730-01	4	12
05.5730-03	8	26
05.5730-05	12	40
05.5730-07	16	54

注: 选用HA2.0接骨螺钉, 适用于颌面骨折。(图示为12孔)

Note: choose HA2.0 screws, used for maxillofacial fixation. (illustration show 12 holes)



L4微形板

L4 Maxillofacial Plate

厚度 (Thickness) : 1.0mm

孔距 (Holes Spacing) : 6mm

材质 (Material) : 纯钛 (Titanium)

产品编号 Product No.	孔数 Holes	长度(mm) Length
05.5734-11/13 (L/R)	2	17
05.5734-01/06 (L/R)	4	29
05.5734-02/07 (L/R)	5	35
05.5734-03/08 (L/R)	6	41

注: 选用HA2.0接骨螺钉, 适用于颌面骨折。(图示为4孔左)

Note: choose HA2.0 screws, used for maxillofacial fixation. (illustration show 4 holes left)



L1微形板

L1 Maxillofacial Plate

厚度 (Thickness) : 1.0 mm

孔距 (Holes Spacing) : 6mm

材质 (Material) : 纯钛 (Titanium)

产品编号 Product No.	孔数 Holes	长度(mm) Length
05.5735-12/14 (L/R)	3	27
05.5735-01/06 (L/R)	4	33
05.5735-02/07 (L/R)	5	39
05.5735-03/08 (L/R)	6	45

注: 选用HA2.0接骨螺钉, 适用于颌面骨折。(图示为4孔左)

Note: choose HA2.0 screws, used for maxillofacial fixation.
(illustration show 4 holes left)



直形微形板

Straight Maxillofacial Plate

厚度 (Thickness) : 1.0mm

孔距 (Holes Spacing) : 6mm

材质 (Material) : 纯钛 (Titanium)

产品编号 Product No.	孔数 Holes	长度(mm) Length
05.5722-02	4	23
05.5722-04	6	35
05.5722-06	8	47
05.5722-08	10	59
05.5722-10	12	71
05.5722-12	14	83
05.5722-14	16	95

注: 选用HA2.0接骨螺钉, 适用于颌面骨折。(图示为6孔)

Note: choose HA2.0 screws, used for maxillofacial fixation.
(illustration show 6 holes)



A1微形板

A1 Maxillofacial Plate

厚度 (Thickness) : 1.0mm

孔距 (Holes Spacing) : 5mm

材质 (Material) : 纯钛 (Titanium)

产品编号 Product No.	孔数 Holes	长度(mm) Length
05.5721-01	4	23
05.5721-02	6	33
05.5721-03	8	43

注: 选用HA2.0接骨螺钉, 适用于颌面骨折。(图示为4孔)

Note: choose HA2.0 screws, used for maxillofacial fixation.
(illustration show 4 holes)

A2微形板

A2 Maxillofacial Plate

厚度 (Thickness) : 1.0 mm

孔距 (Holes Spacing) : 6mm

材质 (Material) : 纯钛 (Titanium)

产品编号 Product No.	孔数 Holes	长度(mm) Length
05.5720-01	4	29
05.5720-02	6	41
05.5720-03	8	53

注: 选用HA2.0接骨螺钉, 适用于颌面骨折。(图示为4孔)

Note: choose HA2.0 screws, used for maxillofacial fixation.
(illustration show 4 holes)

K1微形板

K1 Maxillofacial Plate

厚度 (Thickness) : 1.0 mm

孔距 (Holes Spacing) : 6mm

材质 (Material) : 纯钛 (Titanium)

产品编号 Product No.	孔数 Holes	长度(mm) Length
05.5724-03	8	23
05.5724-04	10	29
05.5724-05	12	35
05.5724-07	16	47

注: 选用HA2.0接骨螺钉, 适用于颌面骨折。(图示为8孔)

Note: choose HA2.0 screws, used for maxillofacial fixation. (illustration show 8 holes)



T2微形板

T2 Maxillofacial Plate

厚度 (Thickness) : 1.0mm

孔距 (Holes Spacing) : 6 mm

材质 (Material) : 纯钛 (Titanium)

产品编号 Product No.	孔数 Holes	长度(mm) Length
05.5733-05	4	34
05.5733-01	5	40
05.5733-02	6	46
05.5733-04	8	58

注: 选用HA2.0接骨螺钉, 适用于颌面骨折。(图示为6孔)

Note: choose HA2.0 screws, used for maxillofacial fixation. (illustration show 6 holes)



M3微形板

M3 Maxillofacial Plate

厚度 (Thickness) : 1.0mm

孔距 (Holes Spacing) : 6mm

材质 (Material) : 纯钛 (Titanium)

产品编号 Product No.	孔数 Holes	长度(mm) Length
05.5726-01	4	11
05.5726-02	6	17
05.5726-03	8	23
05.5726-05	12	35

注: 选用HA2.0接骨螺钉, 适用于颌面骨折。(图示为8孔)

Note: choose HA2.0 screws, used for maxillofacial fixation. (illustration show 8 holes)



三维钛网

Titanium Mesh

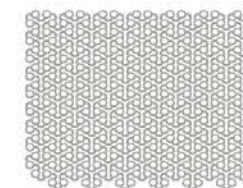
厚度 (Thickness) : 1.0 mm

材质 (Material) : 纯钛 (Titanium)

产品编号 Product No.	孔数 Holes	长度(mm) Length
05.5723-13	322	90*93
05.5723-14	432	105*106
05.5723-15	558	120*120
05.5723-16	777	150*150

注: 选用HA2.0金属接骨螺钉, 适用于颅骨修补。

Note: choose HA2.0 screw, used for skull fixation.





中空螺钉系统
CANNULATED SCREWS SYSTEM

无头加压中空螺钉

Headless Cannulated Compression Screws

材质 (Material) : 钛合金 (Titanium alloy)

产品编号 Product No.	直径 Diameter	长度(mm) Length
05.5377-02	3.0	12
05.5377-03	3.0	14
05.5377-04	3.0	16
05.5377-05	3.0	18
05.5377-06	3.0	20
05.5377-07	3.0	22
05.5377-08	3.0	24
05.5377-09	3.0	26
05.5377-10	3.0	28
05.5377-11	3.0	30

注: 配SW2.0起子、 $\phi 0.8$ 导针、 $\phi 2.0 \times \phi 0.9$ 空心钻、 $\phi 2.8$ 锥度铰刀。
Note: choose SW2.0 screwdriver, $\phi 0.8$ guide pin, $\phi 2.0 \times \phi 0.9$ cannulated drill bit, $\phi 2.8$ reamer.



无头加压中空螺钉

Headless Cannulated Compression Screws

材质 (Material) : 钛合金 (Titanium alloy)

产品编号 Product No.	直径 Diameter	长度(mm) Length
05.5352-03	3.5	14
05.5352-04	3.5	16
05.5352-05	3.5	18
05.5352-06	3.5	20
05.5352-07	3.5	22
05.5352-08	3.5	24
05.5352-09	3.5	26
05.5352-10	3.5	28
05.5352-11	3.5	30
05.5352-12	3.5	32
05.5352-13	3.5	34
05.5352-14	3.5	36
05.5352-15	3.5	38
05.5352-16	3.5	40

注: 配SW2.0起子、 $\phi 1.0$ 导针、 $\phi 2.5 \times \phi 1.1$ 空心钻、 $\phi 3.6$ 锥度铰刀。
Note: choose choose SW2.0 screwdriver, $\phi 1.0$ guide pin, $\phi 2.5 \times \phi 1.1$ cannulated drill bit, $\phi 3.6$ reamer.



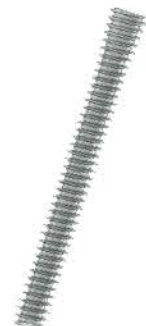
无头加压中空螺钉

Headless Cannulated Compression Screws

材质 (Material): 钛合金 (Titanium alloy)

产品编号 Product No.	直径 Diameter	长度(mm) Length
05.5353-69	4.0	16
05.5353-70	4.0	18
05.5353-50	4.0	20
05.5353-51	4.0	22
05.5353-52	4.0	24
05.5353-53	4.0	26
05.5353-54	4.0	28
05.5353-55	4.0	30
05.5353-64	4.0	35
05.5353-59	4.0	40
05.5353-60	4.0	45
05.5353-61	4.0	50
05.5353-62	4.0	55
05.5353-63	4.0	60

注: 配SW2.5起子、 $\phi 1.2$ 导针、 $\phi 2.8 \times \phi 1.3$ 空心钻、 $\phi 4.2$ 锥度铰刀。
Note: choose SW2.5 screwdriver, $\phi 1.2$ guide pin, $\phi 2.8 \times \phi 1.3$ cannulated drill bit, $\phi 4.2$ reamer.



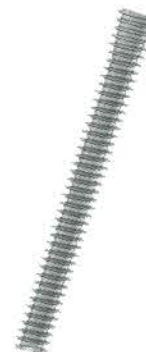
无头加压中空螺钉

Headless Cannulated Compression Screws

材质 (Material): 钛合金 (Titanium alloy)

产品编号 Product No.	直径 Diameter	长度(mm) Length
05.5353-28	5.0	20
05.5353-29	5.0	22
05.5353-30	5.0	24
05.5353-31	5.0	26
05.5353-32	5.0	28
05.5353-33	5.0	30
05.5353-34	5.0	32
05.5353-35	5.0	34
05.5353-36	5.0	36
05.5353-37	5.0	38
05.5353-38	5.0	40
05.5353-39	5.0	45
05.5353-40	5.0	50
05.5353-41	5.0	55
05.5353-42	5.0	60
05.5353-43	5.0	65
05.5353-44	5.0	70

注: 配SW3.0起子、 $\phi 1.5$ 导针、 $\phi 3.5 \times \phi 1.6$ 空心钻、 $\phi 5.0$ 锥度铰刀。
Note: choose SW3.0 screwdriver, $\phi 1.5$ guide pin, $\phi 3.5 \times \phi 1.6$ cannulated drill bit, $\phi 5.0$ reamer.



$\phi 2.7$ 哈勃钉

2.7mm Herbert Cannulated Compression Screws

材质 (Material): 钛合金 (Titanium alloy)

产品编号 Product No.	直径 Diameter	长度(mm) Length
05.5350-01	2.7	10
05.5350-02	2.7	12
05.5350-03	2.7	14
05.5350-04	2.7	16
05.5350-05	2.7	18
05.5350-06	2.7	20
05.5350-07	2.7	22
05.5350-08	2.7	24
05.5350-09	2.7	26
05.5350-10	2.7	28
05.5350-11	2.7	30
05.5350-12	2.7	32
05.5350-13	2.7	34
05.5350-14	2.7	36

注: 配SW2.0起子、 $\phi 1.0$ 导针、 $\phi 2.0 \times \phi 1.1$ 空心钻。
Note: choose SW2.0 screwdriver, $\phi 1.0$ guide pin, $\phi 2.0 \times \phi 1.1$ cannulated drill bit.



$\phi 3.5$ 中空螺钉

3.5mm Cannulated Compression Screws

材质 (Material): 钛合金 (Titanium alloy)

产品编号 Product No.	直径 Diameter	长度(mm) Length
05.5363-02	3.5	26
05.5363-03	3.5	28
05.5363-04	3.5	30
05.5363-05	3.5	32
05.5363-06	3.5	34
05.5363-08	3.5	36
05.5363-09	3.5	38
05.5363-10	3.5	40
05.5363-11	3.5	42
05.5363-12	3.5	44
05.5363-14	3.5	46
05.5363-15	3.5	48
05.5363-16	3.5	50
05.5363-19	3.5	55
05.5363-22	3.5	60

注: 配SW2.5起子、 $\phi 1.2$ 导针、 $\phi 2.5 \times \phi 1.3$ 空心钻。
Note: choose SW2.5 screwdriver, $\phi 1.2$ guide pin, $\phi 2.5 \times \phi 1.3$ cannulated drill bit.



φ4.0中空螺钉

4.0mm Cannulated Compression Screws

材质 (Material): 钛合金 (Titanium alloy)

产品编号 Product No.	直径 Diameter	长度(mm) Length
05.5365-04	4.0	30
05.5365-05	4.0	32
05.5365-06	4.0	34
05.5365-08	4.0	36
05.5365-09	4.0	38
05.5365-10	4.0	40
05.5365-11	4.0	42
05.5365-12	4.0	44
05.5365-14	4.0	46
05.5365-15	4.0	48
05.5365-16	4.0	50
05.5365-19	4.0	55
05.5365-22	4.0	60

注: 配SW2.5起子、φ1.2导针、φ2.8Xφ1.3空心钻。

Note: choose SW2.5 screwdriver, φ1.2 guide pin, φ2.8*φ1.3 cannulated drill bit.



φ6.5中空螺钉

6.5mm Cannulated Compression Screws

材质 (Material): 钛合金 (Titanium alloy)

产品编号 Product No.	直径 Diameter	长度(mm) Length
05.5380-01	6.5	50
05.5380-02	6.5	55
05.5380-03	6.5	60
05.5380-04	6.5	65
05.5380-05	6.5	70
05.5380-06	6.5	75
05.5380-07	6.5	80
05.5380-08	6.5	85
05.5380-09	6.5	90
05.5380-10	6.5	95
05.5380-11	6.5	100
05.5380-12	6.5	105
05.5380-13	6.5	110

注: 配SW4.0起子、φ2.5导针、φ5.0Xφ2.6空心钻。

Note: choose SW4.0 screwdriver, φ2.5 guide pin, φ5.0*φ2.6 cannulated drill bit.

φ4.5中空螺钉

4.5mm Cannulated Compression Screws

材质 (Material): 钛合金 (Titanium alloy)

产品编号 Product No.	直径 Diameter	长度(mm) Length
05.5367-04	4.5	30
05.5367-05	4.5	32
05.5367-06	4.5	34
05.5367-08	4.5	36
05.5367-09	4.5	38
05.5367-10	4.5	40
05.5367-11	4.5	42
05.5367-12	4.5	44
05.5367-14	4.5	46
05.5367-15	4.5	48
05.5367-16	4.5	50
05.5367-19	4.5	55
05.5367-22	4.5	60

注: 配SW2.5起子、φ1.5导针、φ3.2Xφ1.6空心钻。

Note: choose SW2.5 screwdriver, φ1.5 guide pin, φ3.2*φ1.6 cannulated drill bit.



φ7.3中空螺钉

7.3mm Cannulated Compression Screws

材质 (Material): 钛合金 (Titanium alloy)

产品编号 Product No.	直径 Diameter	长度(mm) Length
05.5369-03	7.3	60
05.5369-04	7.3	65
05.5369-05	7.3	70
05.5369-06	7.3	75
05.5369-07	7.3	80
05.5369-08	7.3	85
05.5369-09	7.3	90
05.5369-10	7.3	95
05.5369-11	7.3	100
05.5369-12	7.3	105
05.5369-13	7.3	110
05.5369-14	7.3	115
05.5369-15	7.3	120

注: 配SW4.0起子、φ2.5导针、φ5.0Xφ2.6空心钻。

Note: choose SW4.0 screwdriver, φ2.5 guide pin, φ5.0*φ2.6 cannulated drill bit.

