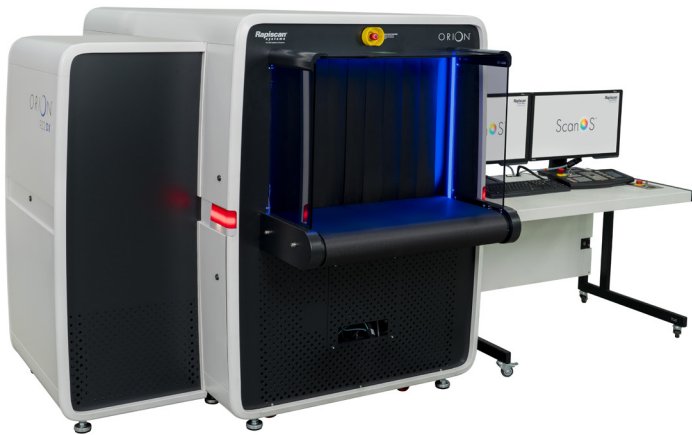


DATASHEET



The new 922DX is a High Performance dual view X-Ray system for baggage and parcel screening. Using geometric distortion correction and advanced image reconstruction the Orion Suite continues to re-imagine X-Ray Screening with the best in class image quality at the highest Belt speeds.

HIGH SPEED CONVEYOR BELT

BEST IN CLASS IMAGE QUALITY

EXPLOSIVES & NARCOTICS DETECTION

ADVANCED OPERATOR ASSIST TOOLS

EU
2015/1998
COMPLIANT

DUAL MODE AUTO Z_{EFF}

The Dual mode Z-effective feature helps with identification of organic materials accurately and quickly either in Range mode which highlights the areas based on range selected by the operator, and/or in Interactive mode which provides the operator the option to display potential Materials based on the Z-effective of the selected location.

HIGH SPEED CONVEYOR

922DX has been designed with a configurable conveyor qualified at three speeds, 0.2m/s, 0.35m/s and 0.5m/s. The speed can be adjusted in the field by qualified Service staff as your operational needs flex into the future.

THREAT DETECTION AND SCANAI

ScanAI offers a range of regulated and unregulated AI solutions designed for the fast and accurate detection of various prohibited items including Weapon Detection.

Target and NARCScan are designed to detect a wide range of explosives and narcotics respectively in real time during the scanning process by marking a potential threat on the X-ray image. Rapiscan[®] Systems detection algorithms are based on regulatory approved material analysis techniques.

BEST IN CLASS IMAGE

Potential threats are becoming increasingly challenging to identify. ORION[®] with SCANOS was purpose-built to improve visibility during the screening process helping operators identify and mitigate potential threats faster leveraging innovative features including:

HIGH RESOLUTION

The primary view consists of a central under belt generator coupled with a high resolution U shaped detector array bringing the X-Ray source as close as possible to the objects being scanned. Using a central under belt source provides natural magnification of object scanned across the maximum number of detector pixels available ensuring the highest possible resolution.

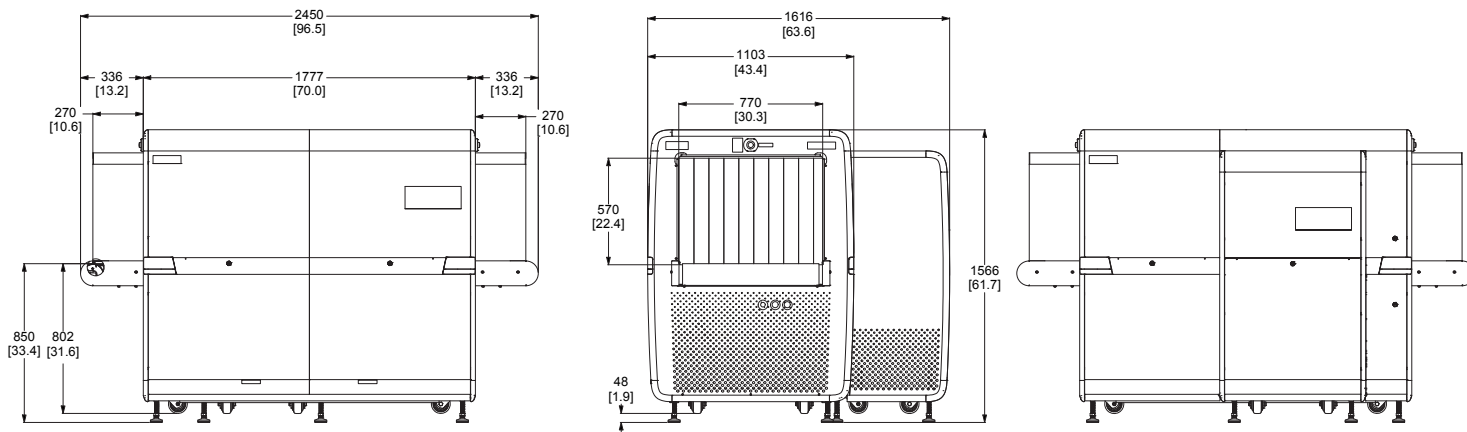
GEOMETRIC DISTORTION CORRECTION

A near perfect aspect ratio correction which ensuring the most accurate image of objects scanned are presented with the correct aspect ratio regardless of orientation and position on the belt.

SPECTRUM COLOR PALLETS

Configurable color pallets including Classic 4-color, Spectrum-4 and Spectrum-7 to better visualize potential threat objects.

ScanOS[®]



PHYSICAL SPECIFICATIONS ¹

DIMENSIONS	L	2,450 mm (96.5 in)
	W	1,616 mm (63.6 in)
	H	1,566 mm (61.7 in)
TUNNEL SIZE	W	770 mm (30.3 in)
	H	570 mm (22.4 in)
CONVEYOR HEIGHT	850 mm (33.4 in)	Adjustable
CONVEYOR LOAD	165 Kg (363.8 lbs)	Evenly Distributed
NET WEIGHT	1,250 Kg (2,755 lbs)	
GROSS WEIGHT	1,556 Kg (3,430 lbs)	

ENVIRONMENT & POWER

STORAGE	
TEMPERATURE	-20°C to 50°C
OPERATING	
TEMPERATURE	0°C to 40°C
RELATIVE HUMIDITY	5 to 95% non-condensing
SYSTEM POWER	100/110/120/200/208 / 220/230/240 VAC ±10%50Hz / 60 Hz ±3%
POWER	
CONSUMPTION	Approx. 1.3kW

X-RAY GENERATOR

ANODE VOLTAGE	160kV
ORIENTATION	Vertically Upward from center under belt & Diagonally from Side

STANDARD SPEED PERFORMANCE ²

CONVEYOR SPEED	0.20 m/sec (39.4 ft/min)
STEEL PENETRATION	39 mm typical, 38 mm standard
WIRE RESOLUTION	42 AWG typical, 41 AWG standard
SPATIAL RESOLUTION	0.8 mm (0.03 in) Vertical / Horizontal

HIGH SPEED PERFORMANCE ²

CONVEYOR SPEED	0.35 m/sec (68.9 ft/min)
STEEL PENETRATION	38 mm typical, 37 mm standard
WIRE RESOLUTION	40 AWG typical, 38 AWG standard
SPATIAL RESOLUTION	0.8 mm (0.03 in) Vertical / Horizontal

HYPER SPEED PERFORMANCE ²

CONVEYOR SPEED	0.5 m/sec (98.4 ft/min)
STEEL PENETRATION	36 mm typical, 35 mm standard
WIRE RESOLUTION	40 AWG typical, 38 AWG standard
SPATIAL RESOLUTION	1.0 mm (0.04 in) Vertical / Horizontal

KEY FEATURES

- SCANOS 64-bit Operating System
- Geometric Distortion CORRECTION
- Classic 4 color, Spectrum 4 & Spectrum 7
- SINERGY low density enhancement
- Dual Mode Z-effective
- Crystal Clear™
- VOLUMIZER
- Automatic, Enhanced Image Archiving
- Multilingual Support

KEY OPTIONS

- Threat Image Projection
- Explosive threats, narcotics & density alerts
- BHS / System Integration:
 - Standard Open Interface Capability
 - DICOS Image Format
- SCANAI Capable:
 - SCANAI Lithium ION Battery
 - SCANAI Weapons
- SCAN ORIGIN Capable:
 - Remote Archive Review
 - Multi-System Alarm Resolution
 - Multiplexing / Matrixing
 - Remote Status Monitoring



sales@rapiscansystems.com

www.rapiscansystems.com



Rapiscan
systems
An OSI Systems Company

1. Approximate Values 2. Stated performance as measured by Rapiscan® Imaging Validation Test Kit

Rapiscan® Systems is ISO 9001:2015 Certified

Rapiscan® Systems' cabinet X-ray products comply with all applicable U.S. FDA and equivalent international regulatory agency requirements, contained in the cabinet X-ray radiation safety performance standard [21 CFR 1020.40] and the general performance standard [21 CFR Part 1010] as well as IEC standard 61010-2-091. Rapiscan® baggage and parcel inspection systems radiation emission leakages are well below the required regulatory limits with less than 1µSv/hr at 10 cm from all surfaces of cabinet X-ray.

With continual development of our products Rapiscan® Systems reserves the right to amend specifications without notice. Product pictures are for general reference. Please note that due to US laws and regulations, not all Rapiscan® products are available for sale in all countries without restriction. Please contact your Rapiscan® Systems sales representative for more information.