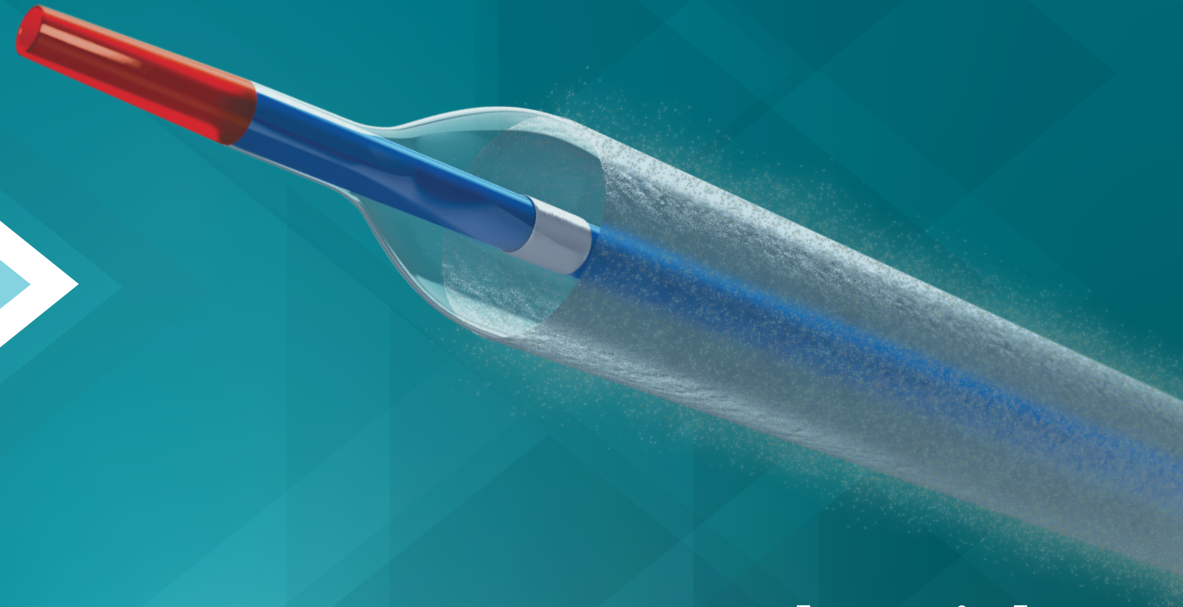


AGENT™

Drug-Coated Balloon



1. DCB Bench testing performed by Boston Scientific Corporation. Data on file at Boston Scientific.
2. Pre-clinical pharmacokinetic studies, data on file at Boston Scientific for AGENT, SeQuent Please and Selution. Published data from Magic Touch.
3. Blagosklonny et al. Paclitaxel induces primary and postmitotic G1 arrest in human arterial smooth muscle cells. *Cell Cycle*. 2004 Aug;3(8):1050-6. Epub 2004 Aug 24.
4. Method: balloons delivered in a coronary track model with fluid recirculation of 150 ml/min at T= 37 °C. Particulates are collected with a polycarbonate filter 5.0 µm x 47 mm (Sterilitech). Bench test results may not necessarily be indicative of clinical performance.
5. Hamm, C, et al, AGENT ISR study, Eurointervention, 2019, comparative clinical study results on file at Boston Scientific Corporation: Data available upon request.
6. Nakamura, M, et al, Drug-coated balloon for the treatment of small vessel coronary artery disease, *Circulation Japan* 2022.

Please review the AGENT Brief Summary for full instructions on use.

CAUTION: The law restricts these devices to sale by or on the order of a physician. Indications, contraindications, warnings and instructions for use can be found in the product labeling supplied with each device. Products shown for INFORMATION purposes only and may not be approved or for sale in certain countries. The material not intended for use in France.

All trademarks are the property of their respective owners.

**Boston
Scientific**
Advancing science for life™

Interventional Cardiology
300 Boston Scientific Way
Marlborough, MA 01752-1234
www.bostonscientific.com

*To order product or for more information
contact customer service at 1.888.272.1001.*

© 2023 Boston Scientific Corporation
or its affiliates. All rights reserved.

IC-1492906-AA

Leave the Right AGENT Behind



Perform complex interventions without compromise



Effortless Deliverability
Navigate and cross complex lesions with ease



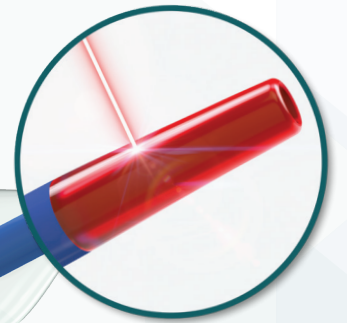
Efficient Drug Transfer
Deliver the optimal dose when it matters most, with less balloon drug load



Exceptional Long-Term Outcomes
Drive lower event rates consistently as demonstrated by AGENT clinical trials

➤ Effortless Deliverability

Navigate and cross complex lesions with ease



Laser Bonded Tip
Improves crossability and reduces tip catch

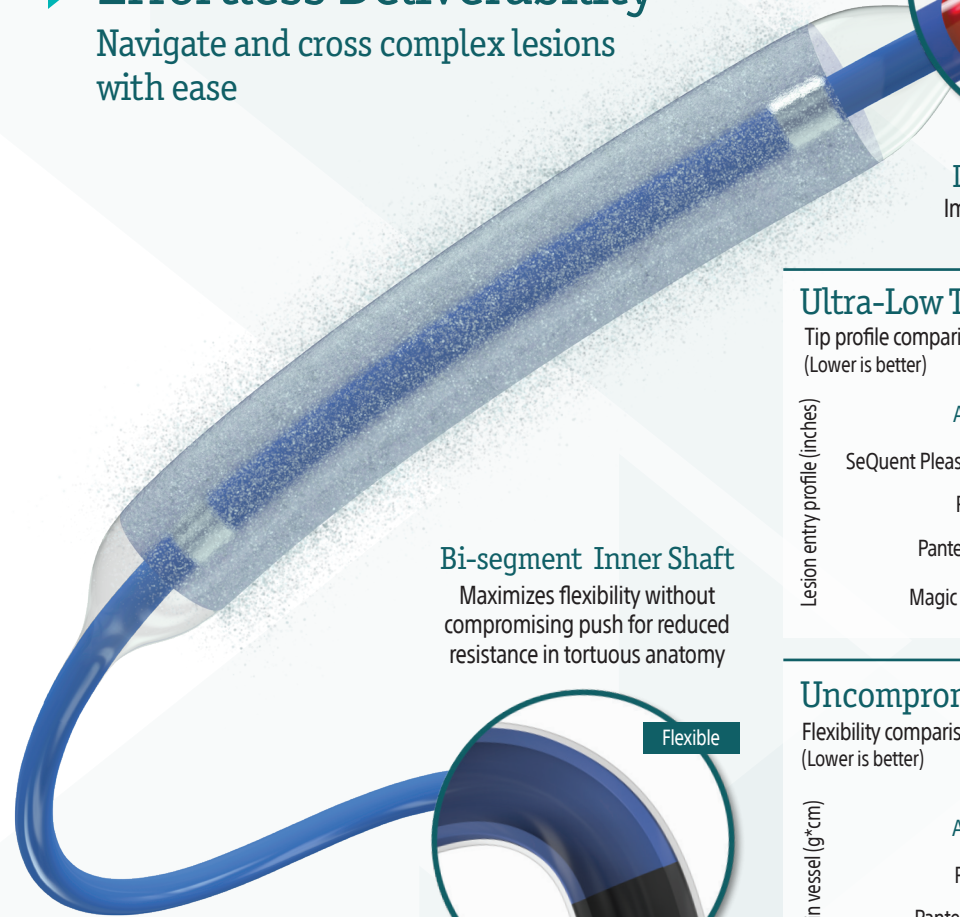
Ultra-Low Tip Profile

Tip profile comparison - 3.50mm DCB¹
(Lower is better)

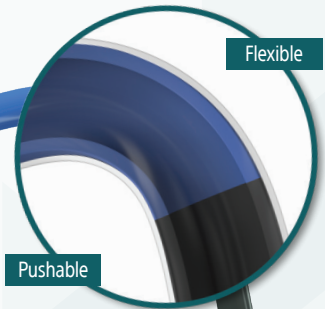
Lesion entry profile (inches)	AGENT	0.0167
	SeQuent Please Neo	0.0174
	Prevail	0.0178
	Pantera Lux	0.0186
	Magic Touch	0.0204

Bi-segment Inner Shaft

Maximizes flexibility without compromising push for reduced resistance in tortuous anatomy



Z-Glide™
Improves tracking with proprietary lubricious coating



Flexible

Pushable

Uncompromised Flexibility

Flexibility comparison - 3.50mm DCB¹
(Lower is better)

Delivery force in vessel (g*cm)	AGENT	157
	Prevail	172
	Pantera Lux	207
	SeQuent Please Neo	190
	Magic Touch	246

➤ Efficient Drug Transfer

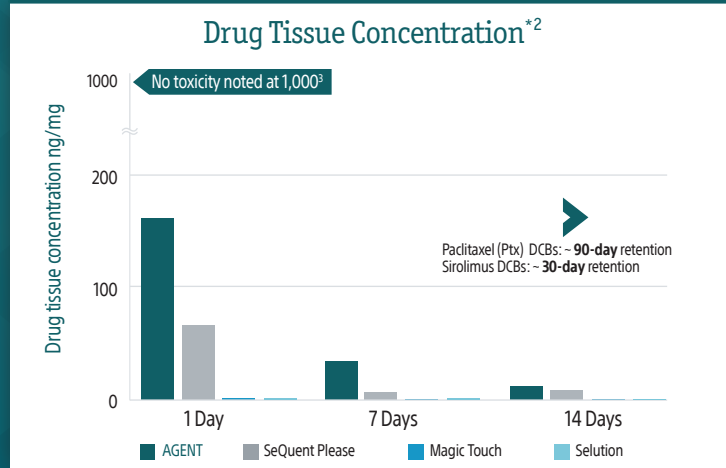
Deliver the optimal dose when it matters most, with less balloon drug load.



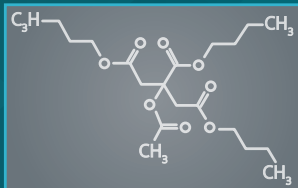
Lowest balloon Ptx load⁴

AGENT:
2 ug/mm²

Other Ptx DCBs:
3-3.5 ug/mm²

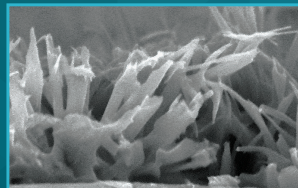


TransPax™ coating optimizes the three phases of drug delivery



Targeted Transfer

Novel excipient (ATBC) minimizes drug loss while tracking and enhances drug transfer during inflation



Rapid Absorption

Sharp edge Ptx improves tissue penetration for accelerated absorption



Sustained Retention

Uniform crystalline formulation maintains therapeutic effectiveness through the healing process

*Independent studies performed using the same FDA recommended and accepted porcine coronary de novo vessel test method. BSC conducted AGENT, SeQuent Please and Selution. Magic touch published data, TCT 2020.

➤ Exceptional Long-Term Outcomes

Drive lower event rates consistently as demonstrated by AGENT clinical trials.

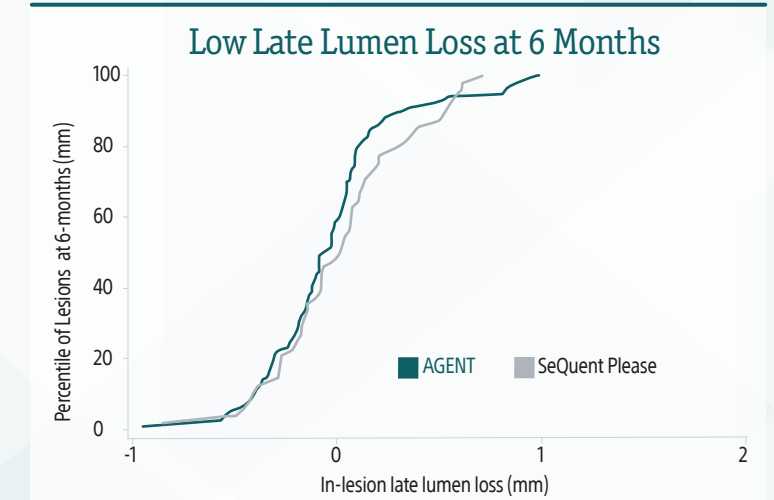
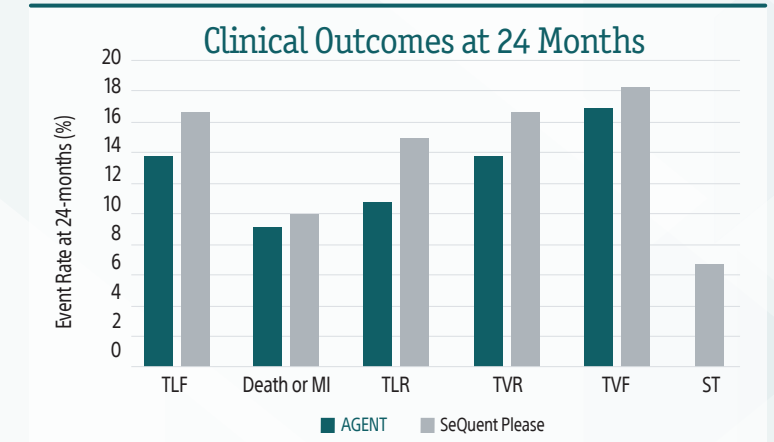
AGENT ISR Study⁵

AGENT demonstrated numerically lower event rates at 24 months compared to SeQuent Please



AGENT Japan SV Study⁶

AGENT consistently showed lower levels of late lumen loss compared to SeQuent Please



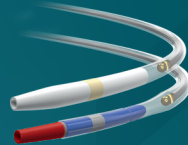
Modern PCI



A tailored approach to each lesion with the most complete portfolio.



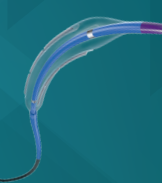
OPTICROSS HD
60 MHz Coronary Imaging Catheter



COMET II
Pressure Guidewire



WOLVERINE
Cutting Balloon Dilatation Device



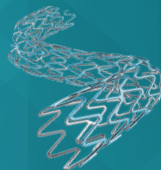
NC EMERGE
FICA Dilatation Catheter



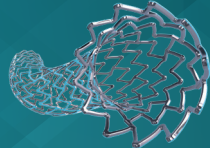
MAMBA
Microcatheter Family



SYNERGY XD
Expandable Cutting Platinum-Chromium Coronary Stent System



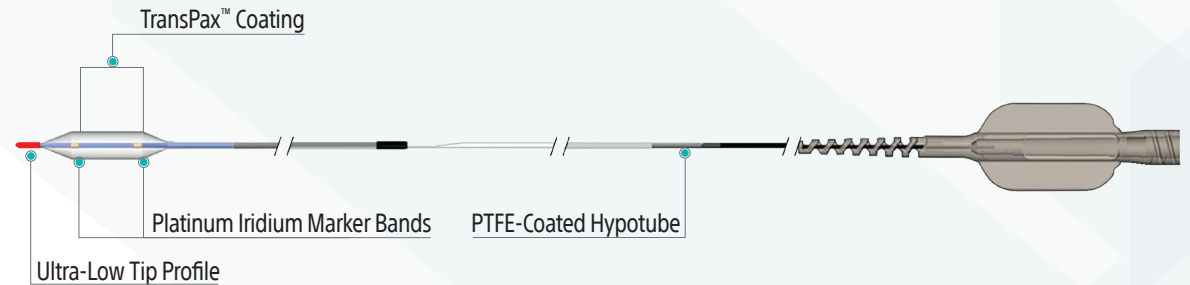
SYNERGY MEGATRON
Expandable Cutting Platinum-Chromium Coronary Stent System



AGENT
Patent Pending Drug Coated Balloon



AGENT™ Drug-Coated Balloon



Balloon Length (mm)

ø (mm)	12	15	20	30
2.00	H749 3922220121 0	H749 3922220151 0	H749 3922220201 0	H749 3922220301 0
2.25	H749 3922222121 0	H749 3922222151 0	H749 3922222201 0	H749 3922222301 0
2.50	H749 3922225121 0	H749 3922225151 0	H749 3922225201 0	H749 3922225301 0
2.75	H749 3922227121 0	H749 3922227151 0	H749 3922227201 0	H749 3922227301 0
3.00	H749 3922230121 0	H749 3922230151 0	H749 3922230201 0	H749 3922230301 0
3.50	H749 3922235121 0	H749 3922235151 0	H749 3922235201 0	H749 3922235301 0
4.00	H749 3922240121 0	H749 3922240151 0	H749 3922240201 0	H749 3922240301 0