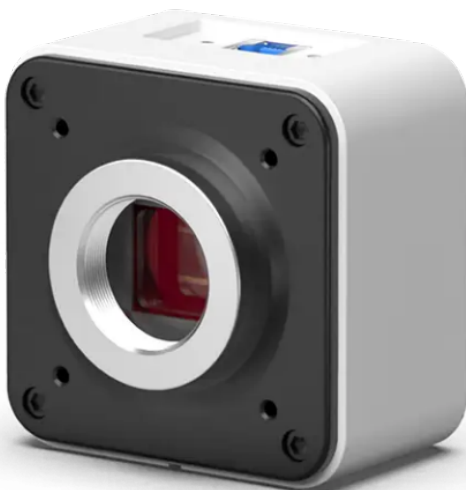


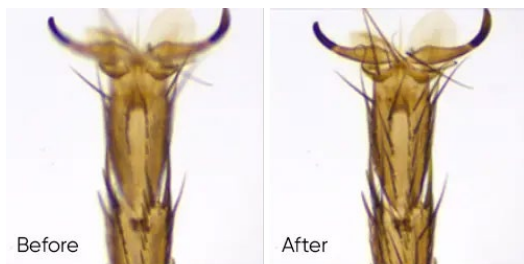
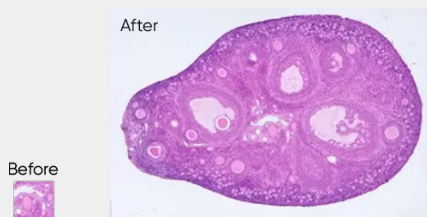
16MP USB3.0 Color CMOS Camera

- 7.77mm Diagonal FOV
- 4608 x 3456 Resolution
- 1.34 μ m x 1.34 μ m Pixel Size
- 12fps@16MP
- USB3.0
- Live Stitching
- Live EDF



Live Stitching

It can generate large-sized mosaic images in a few seconds while moving the stage, which is light, smooth and worry-free!

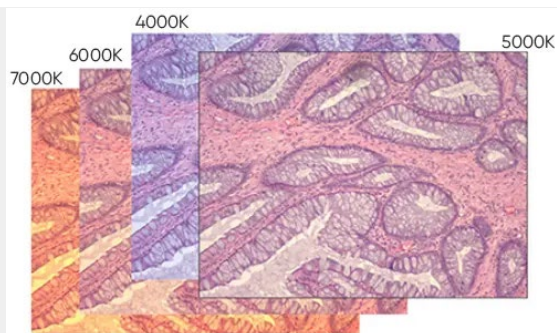


Live EDF

While turning the focus ring to image different depth-of-field points, the camera can automatically generate clear, large depth-of-field images quickly, accurately and efficiently.

Wide Range Color Temperature Adjustment

The camera has an integrated 1800-10000K color temperature adjustment, significantly improves the white balance, delivering incredible color fidelity in the original image, eliminating the need for any post processing.



Specification

Item	Technical Specifications
Sensor Type	CMOS
Sensor Model	SONY IMX206CQC
Color/Mono	Color
Array Diagonal	7.77mm
Resolution	16MP, 4608(H)x3456(V)
Pixel size	1.34 μ m \times 1.34 μ m
Effective area	6.2mm \times 4.6mm
Shutter Mode	Rolling
Frame Rate	12fps(4608 \times 3456) 15fps(4608*2736) 19fps(3648*2736)
Exposure Time	22 μ s-26s
Binning	2x2, 3x3, 4x4
Color Temperature	2000-15000K
PC Software	Capture 2.0
Picture Format	TIFF/JPG/PNG/DICOM
Multiple Cameras	Supports 4 Cameras Simultaneously in SDK
SDK	C/C++, C#, Directshow/Twain
Optical Interface	Standard C Mount
Bit Depth	16/8bit
Power	3W
Dimensions	68mm \times 68mm \times 46mm
Data Interface	USB3.0
Operating Environment	Temperature: -10~45 $^{\circ}$ C; Humidity: 10%~85%
Camera Weight	327g
Operating System	Windows 7/10 (32 Bit/64 Bit)/Mac
PC Configuration	CPU: Intel Core i5 or better(Quad or more Core), RAM: 8G or more,