

**medDream**

**PACS**

**STORE, ARCHIVE,  
MANAGE, VIEW  
MEDICAL IMAGES**



VENDOR NEUTRAL  
ARCHIVE



MODALITY  
WORKLIST



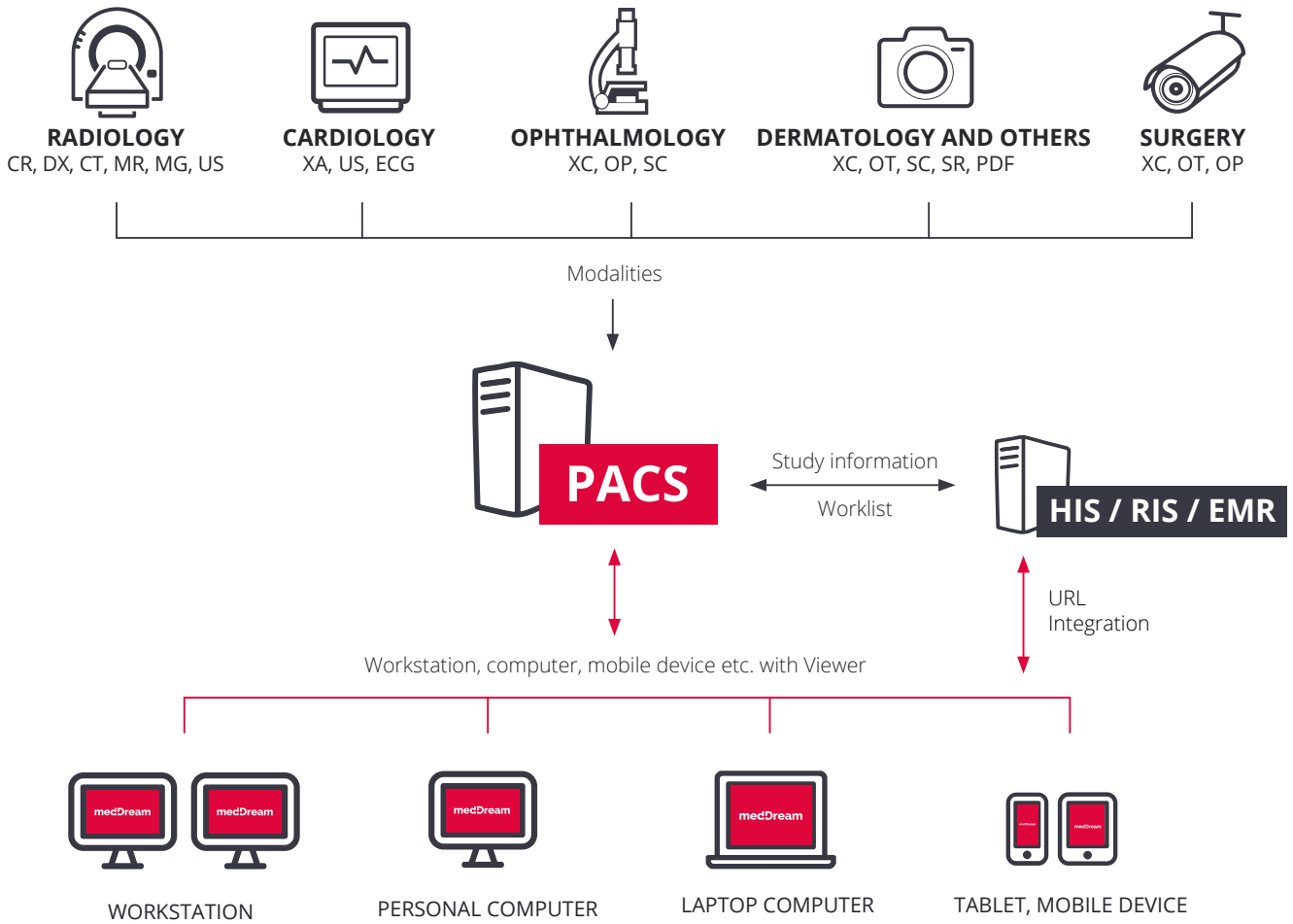
CUSTOMISABLE  
AUTOROUTING



HIS / RIS / EMR  
INTEGRATION

 **Softneta**

# Workflow with MedDream PACS



Patient ID	Name	Accessionnum	Modality	Description	Date Time	Received On	Source AE
A 185556	Anonymized	20160317145141	CT		2016-03-17 14:51:41	2016-03-17 14:23:06	MEDDREAM
185557	Anonymized	20160318133812	CT		2016-03-18 13:38:12	2016-03-17 08:36:01	Upload-destream
00-428	Anonymized	2016-02-04 18:23:24	US		2016-02-04 18:23:24	2016-02-04 18:23:27	Upload-root
00-027	Anonymized	20160204142348	US		2016-02-04 14:23:48	2016-02-04 18:27:47	Upload-root
igser1	Anonymized	20160204101334	US		2016-02-04 10:13:34	2016-03-01 15:50:00	SENDTOPACS
16-4353	Anonymized	201602010930458	OT		2016-02-01 09:30:54	2016-02-04 11:43:28	Upload-root
T23456	Anonymized	2016010813545289	OT		2016-01-08 13:54:52	2016-03-01 14:56:22	SENDTOPACS
T23456	Anonymized	2016010808302579	OT		2016-01-08 08:30:29	2016-03-01 16:18:19	SENDTOPACS
A Measure Test	Anonymized	DEMO	US	SendTOPACS DEMO	2015-12-09 13:43:48	2016-03-10 11:57:12	MEDDREAM
A CR15-180413	Anonymized	247-250	CT	KUPAS	2015-12-08 11:19:46	2016-01-29 11:57:51	MEDDREAM
A 4815-6648	Anonymized	182-185	CT	KUPAS	2015-12-07 07:31:53	2016-01-29 11:38:44	MEDDREAM
15-11528	Anonymized	2015032311240348	OT		2015-03-23 11:24:03	2015-06-17 18:12:49	SENDTOPACS
B	Anonymized	2014112712544488	OT		2014-11-27 12:54:44	2016-02-04 11:46:02	Upload-root
{14-198[SENDTOPACS-041181225]}	Anonymized	195	MR	GALVAHC	2014-06-18 14:32:38	2015-06-17 18:12:54	SENDTOPACS
A {14-10}	Anonymized		MR	GALVAHAALAS	2014-03-28 10:55:23	2015-06-17 18:11:54	MEDDREAM
45E11180944	Anonymized		US		2014-02-12 11:38:37	2016-03-01 14:55:29	Upload-destream
AK915430521	Anonymized		MR	ABDOMEN/PELVIS	2014-01-28 10:09:31	2015-06-17 18:12:54	SENDTOPACS
4841920312	Anonymized		MR	HEAD/ROUTINE	2014-01-28 08:52:18	2015-06-17 18:13:29	SENDTOPACS
A 14-295 815	Anonymized	977,816	CT	STUBI/PAS 215	2014-01-27 07:52:11	2015-06-17 18:12:40	MEDDREAM
A 45402670645 - 4362	Anonymized		CT	Spine/SpineRoutine (Multi)	2013-10-21 18:11:20	2015-06-17 18:13:27	MEDDREAM

# MedDream PACS + WEB DICOM Viewer features

## Store, archive, manage medical images:

- C-STORE, C-FIND, C-GET and C-MOVE support;
- Implicit Little Endian, Explicit Little Endian;
- JPEG, JPEG-LS, JPEG 2000, RLE, MPEG-2;
- MPEG-4 Transfer Syntaxes supported;
- DICOM ECG file support;
- DICOM MPEG-2 and MPEG-4 Video playback support;
- Study forwarding.

## View medical images:

- Regular tools: zoom, pan, windowing, magnifier, etc.;
- Cine playback of multi-frame sequences;
- Wide variety of measurements: distance, angle, density (HU), etc.;
- Reference lines (Scout Lines);
- Comfortable bar of series preview with thumbnails.

## Integration:

- Integration to HIS / RIS / EMR. Flexible and open integration interface;
- Multi-language support.

Johnson, A.  
Date: 2015-12-08  
20553  
688 x 1595

Line  
Slope angles  
Angle  
Polyline  
Area  
Volume  
VOI  
STD  
Cobb Angle  
Points  
Save annotations  
Calibrate  
Intensity  
Delete All

JOHNSON, A.  
CR15-193613  
Exam: 20553  
2015-12-08 11:19:46

JOHNSON, A.  
CR15-193613  
Exam: 20553  
2015 Dec 08 - 12-08 11:19:46  
LightSpeed Pro 16

Series	T type	Scan Range (mm)	CTDIvol (mGy)	DLP (mGy-cm)	Phantom (cm)
1	Scout				
2	Helical	558.500-1601.500	15.82	1094.26	Body 32
200	Axial	1233.750-1233.750	8.75	8.76	Body 32
4	Helical	1147.750-1585.250	18.38	862.57	Body 32
4	Helical	556.250-1586.250	16.56	1116.99	Body 32
5	Helical	1147.750-1377.750	14.97	392.02	Body 32
Total Exam DLP				3474.60	

## Optional modules of MedDream WEB DICOM Viewer



### Report Module

Writing, storing and viewing reports, templates



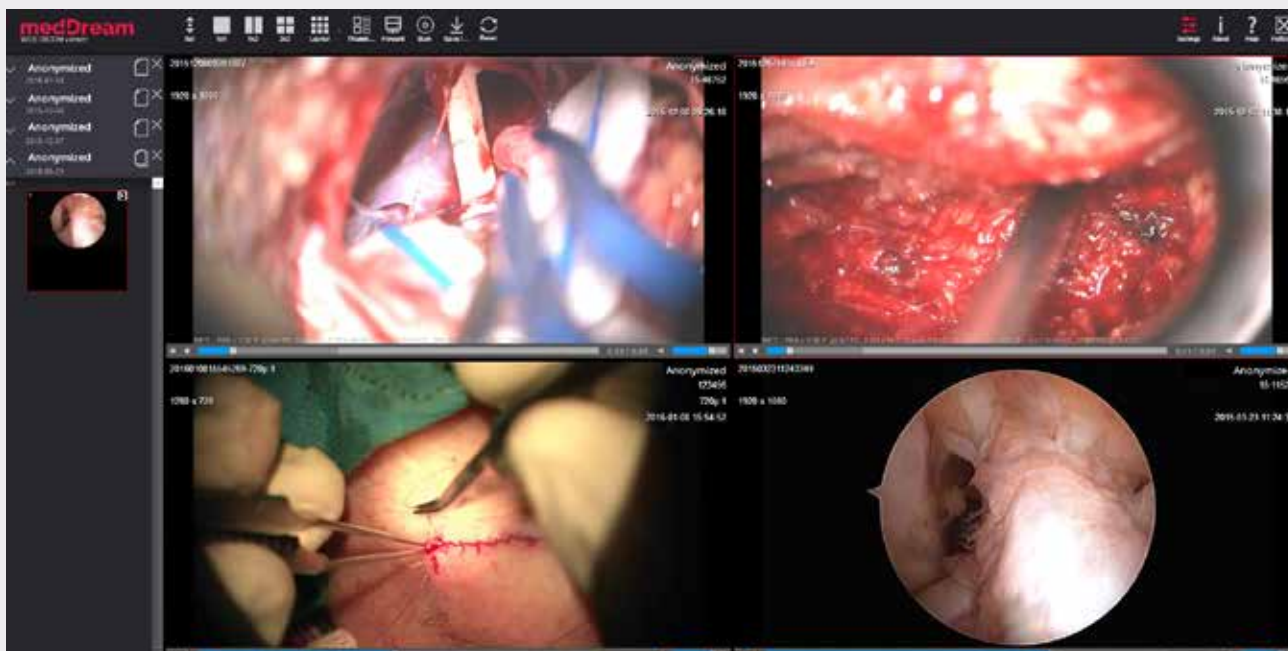
### ECG Module

Viewing and measuring



### Video Module

MPEG-2, MPEG-4 viewing



**Softneta**  
Medical imaging

E-mail: [info@softneta.com](mailto:info@softneta.com)

Phone: +370 672 42852

Web: [www.softneta.com](http://www.softneta.com)

Address: K. Barsausko str. 59,

LT-51423, Kaunas,

Lithuania

