

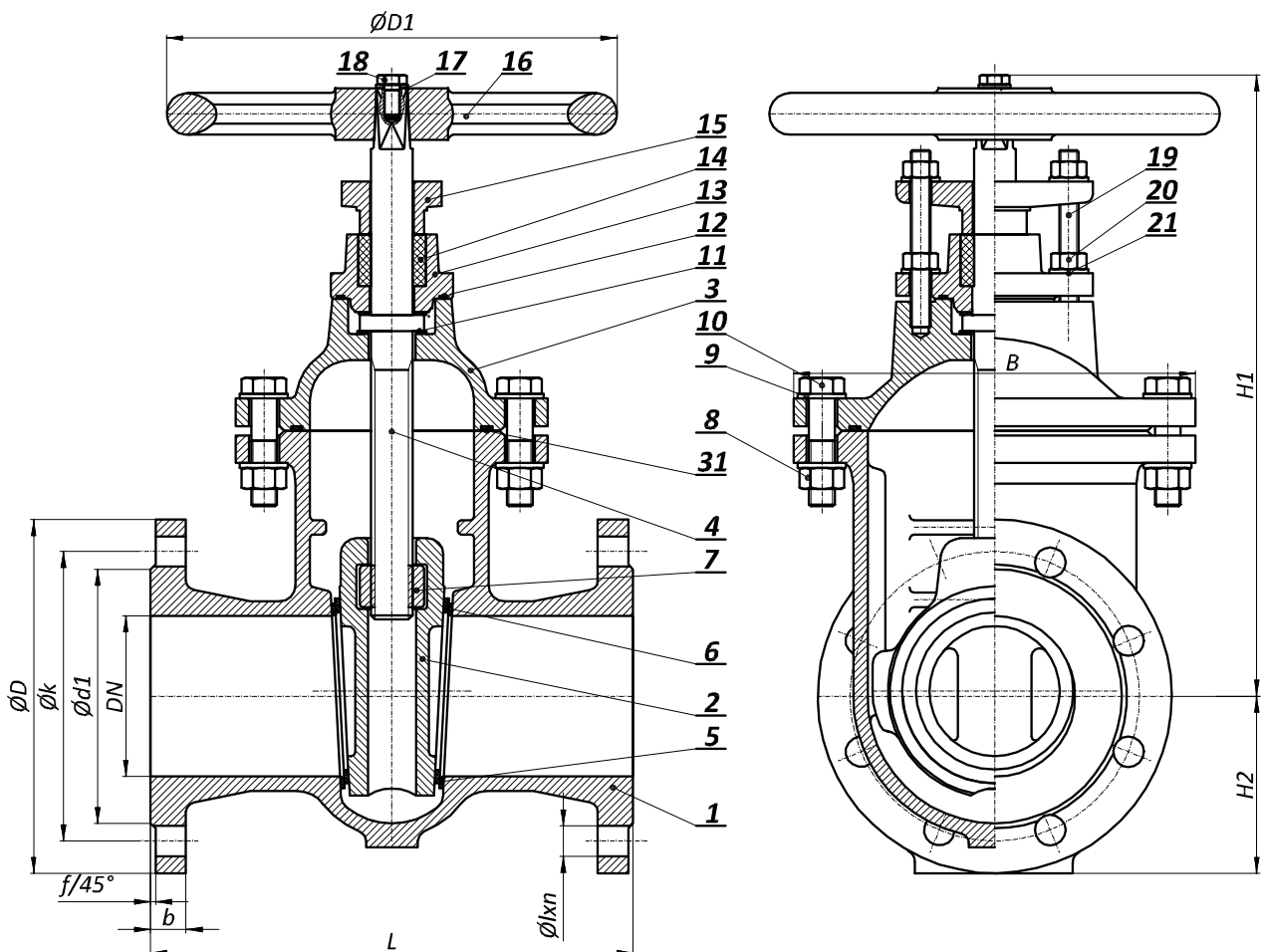
VANA SERTAR CU CORP OVAL CONF. EN 1171

GATE VALVE WITH OVAL BODY ACC. TO EN 1171

Art N°
V2-01



NOMINAL SIZE Diametru nominal	PRESSURE RATING Presiune nominala	FLANGES Flanse EN 1092-2	TEST PRESSURE ACC. TO EN 12266 Test de presiune conf. EN12266	
			bar	bar
DN	PN bar	bar	Corp	Inchis
40 - 1400	16	16	24	17,6
40 - 1600	10	10	15	11
40 - 600	25	25	37,5	27,5



Aplicatii standard: apa, apa potabila, apa reziduala
Temperatura maxima de lucru: 60°C (mai mare, la cerere)

Constructie fata in fata : EN 558 SERIES 14

Acoperire standard: acoperire epoxidica prin fuziune
min.250 mic RAL 5015

Alte medii/aplicatii sau acoperiri, la cerere

Asamblare cu flanse conf. EN1092-2 sau la cerere
cu alte standarde

Operare cu roata de manevra. La cerere cu
motor electric, reductor, tija de actionare, actionare
pneumatica sau hidraulica

STANDARD APPLICATION: WATER, POTABLE WATER, WASTE WATER

MAX. WORKING TEMPERATURE: 60°C (other on request)

Face to face: EN 558 SERIES 15

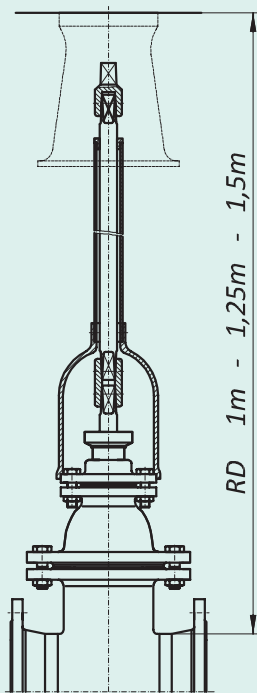
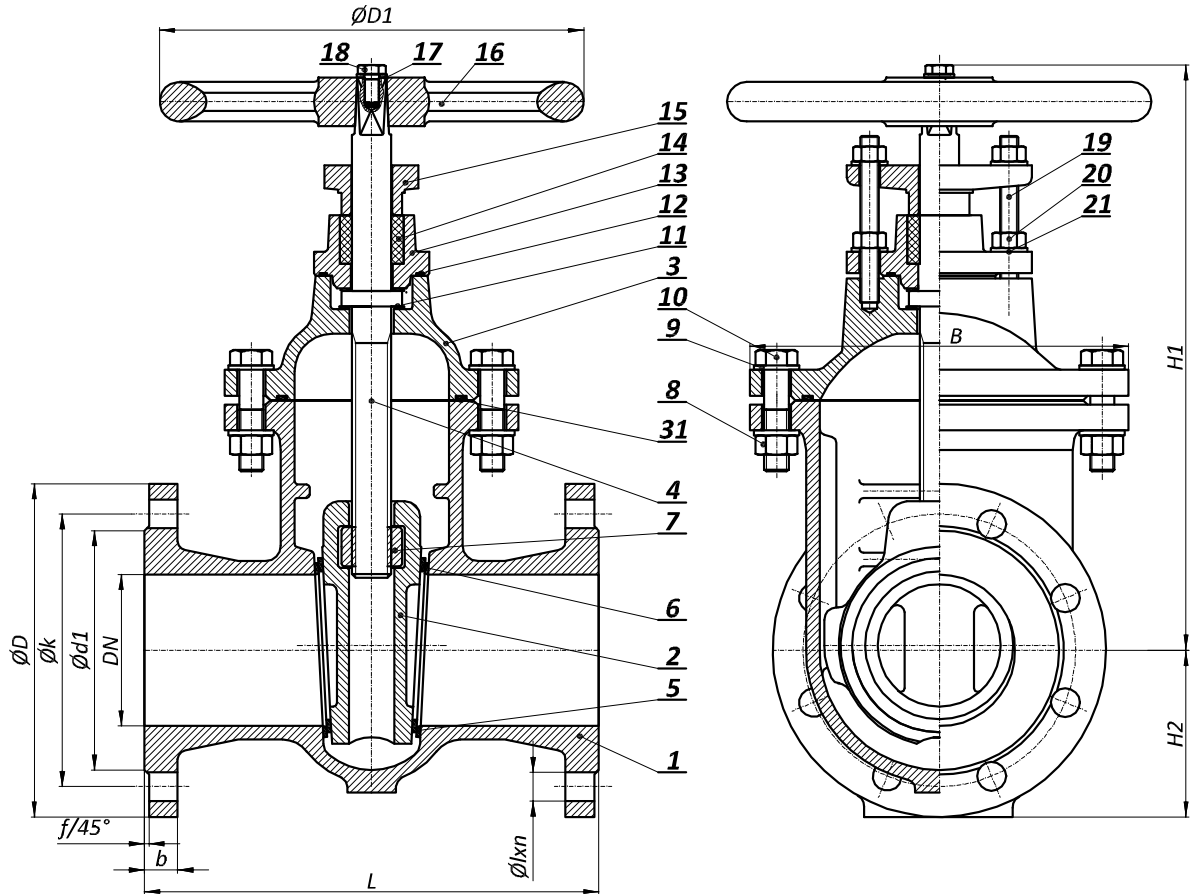
Standard coating: Fusion bonded epoxy powder min. 250 mic RAL 5015

Other medium / application or coating on request

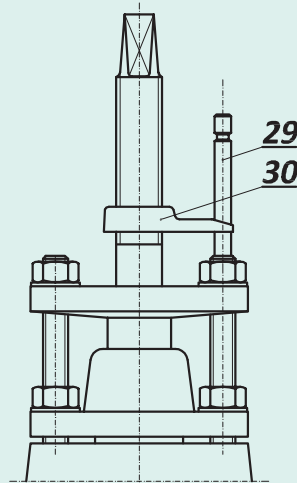
Installation flanges according to EN 1092-2 or on request according
to other standard.

Handwheel operation. On request electric actuator, gearbox,
extension spindle, hydraulic or pneumatical actuation

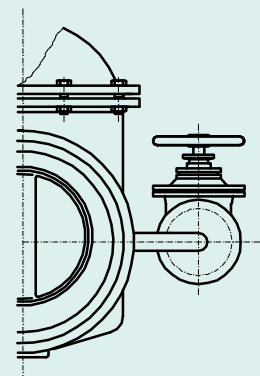
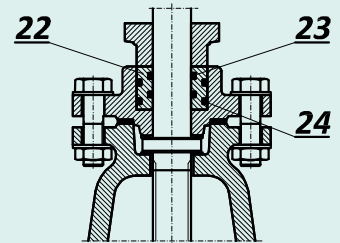
VANA SERTAR CU CORP OVAL CONF. EN 1171
GATE VALVE WITH OVAL BODY ACC. TO EN 1171



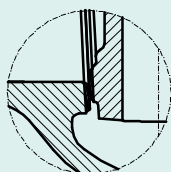
INSTALLATION EQUIPMENT
ECHIPAMENT DE INSTALARE



POSITION INDICATOR
INDICATOR DE POZITIE

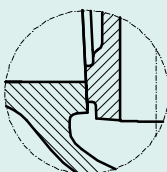


BYPASS
BYPASS

ETANSARE
SEALING

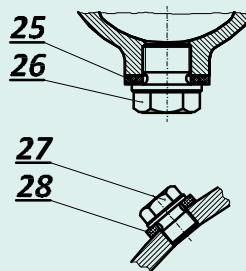
X15CrNiMn 18-8 / X15CrNiMn 18-8

CC480K / CC480K



EN-GJS-400-15 /

EN-GJS-400-15



POSITION	NAZIV POZICIJE	Parti componente	PART	MATERIAL
1	Kučište	Corp	Body	■
2	Klin	Sertar	Wedge	■
3	Kapa	Capac	Bonnet	■
4	Vreteno	Tija	Spindle	X20Cr13
5	Prsten kučišta	Inel de etansare corp	Body Seat Ring	CC480K
6	Prsten klina	Inel de etansare sertar	Wedge Seat Ring	CC480K
7	Matica vretena	Piulita tijeii	Spindle nut	CC483K
8	Matica	Piulita	Nut	8 galv.
9	Podložna pločica	Saiba	Washer	galv.
10	Vijak	Surub	Screw	8.8 galv.
11	Klizni prsten	Inel rulment	Bearing ring	CC493K
12	Plosnata brtva	Garnitura	Gasket	It / EPDM
13	Dvostruka brtvenica	Corp bucsa de etansare	Stuffing Box Body	■
14	Pletenica	Invelis bucsa de etansare	Stuffing Box Packing	PTFE
15	Jednostruka brtvenica	Bucsă de etansare	Stuffing box	■
16	Ručno kolo	Roata de manevra	Hand Wheel	■
17	Podložna pločica	Saiba	Washer	galv.
18	Vijak	Surub	Screw	8.8 galv.
19	Navojna šipka	Tija filetata	Threaded rod	A2
20	Matica	Piulita	Nut	8 galv.
21	Podložna pločica	Saiba	Washer	galv.
22	Brtvena puškica	Bucsă de etansare	Sealing bush	CC493K
23	"O" brtva	"O" ring	"O" ring	EPDM
24	"O" brtva	"O" ring	"O" ring	EPDM
25	Brtva čepa za odmuljivanje	Garnitura	Gasket	Cu
26	Čep za odmuljivanje	Cep dop scurgere	Drain Plug Screw	A4
27	Čep za odzračivanje	Cep aerisitor	Air Release Screw	A4
28	Brtva čepa za odzračivanje	Garnitura	Gasket	Cu
29	Stup pokazivača	Scala indicatorului de pozitie	Position Indicator Scale	X20Cr13
30	Pokazivač	Indicator de pozitie	Position indicator	CC493K
31	Plosnata / "O" brtva	Garnitura plata/ O ring	Flat gasket / "O" ring	EPDM

* materiale standard

* Alte materiale la cerere

* standard materials

* other materials on request

DN	L	H ₁	H ₂		B	PN 10						PN 16						f	D1	rot./deschidere Turns / lift	m	
			PN10	PN16		D	k	d ₁	l	n	b	D	k	d ₁	l	n	b				kg	
																						kg
40	240	250	80	80	150	150	110	84	19	4	19	150	110	84	19	4	19	3	180	15	16	
50	250	265	87,5	87,5	160	165	125	99	19	4	19	165	125	99	19	4	19	3	180	18	18	
65	270	320	97,5	97,5	205	185	145	118	19	4/8	19	185	145	118	19	4/8	19	3	225	18	25	
80	280	335	105	105	220	200	160	132	19	8	19	200	160	132	19	8	19	3	225	21	33	
100	300	380	115	115	260	220	180	156	19	8	19	220	180	156	19	8	19	3	280	24	41,5	
125	325	448	130	130	295	250	210	184	19	8	19	250	210	184	19	8	19	3	320	30	61	
150	350	480	147,5	147,5	330	285	240	211	23	8	19	285	240	211	23	8	19	3	320	36	81	
200	400	600	180	180	400	340	295	266	23	8	20	340	295	266	23	12	20	3	360	38	124	
250	450	710	207,5	212,5	460	395	350	319	23	12	22	405	355	319	28	12	22	3	400	47	182	
300	500	800	232	240	550	445	400	370	23	12	24,5	460	410	370	28	12	24,5	4	500	56	240	
350	550	890	262,5	270	585	505	460	429	23	16	24,5	520	470	429	28	16	26,5	4	500	55	332	
400	600	1000	292,5	300	670	565	515	480	28	16	24,5	580	525	480	31	16	28	4	640	62	465	
450	650	1100	317,5	330	720	615	565	530	28	20	25,5	640	585	548	31	20	30	4	640	70	615	
500	700	1200	345	367,5	820	670	620	582	28	20	26,5	715	650	609	34	20	31,5	4	720	68	725	
600	800	1360	400	430	960	780	725	682	31	20	30	840	770	720	37	20	36	5	720	82	1010	
700	900	1550	457,5	465	1030	895	840	794	31	24	32,5	910	840	794	37	24	39,5	5	800	82	1346	
800	1000	1780	517,5	522,5	1160	1015	950	901	34	24	35	1025	950	901	41	24	43	5	800	94	1836	
900	1100	1960	567,5	572,5	1260	1115	1050	1001	34	28	37,5	1125	1050	1001	41	28	46,5	5	800	95	2436	
1000	1200	2150	625	637,5	1400	1230	1160	1112	37	28	40	1255	1170	1112	44	28	50	5	900	105	3590	
1200	1400	2520	742,5	757,5	1655	1455	1380	1328	41	32	45	1485	1390	1328	50	32	57	5	1000	107	5260	
1400	1600	3045	852,5	857,5	1938	1675	1590	1530	44	36	46	1685	1590	1530	50	36	60	5	1000	121	8800	
1600	1800	3419	972,5	980	2171	1915	1820	1750	50	40	49	1930	1820	1750	57	40	65	5	1000	123	13200	

* alte dimensiuni, la cerere

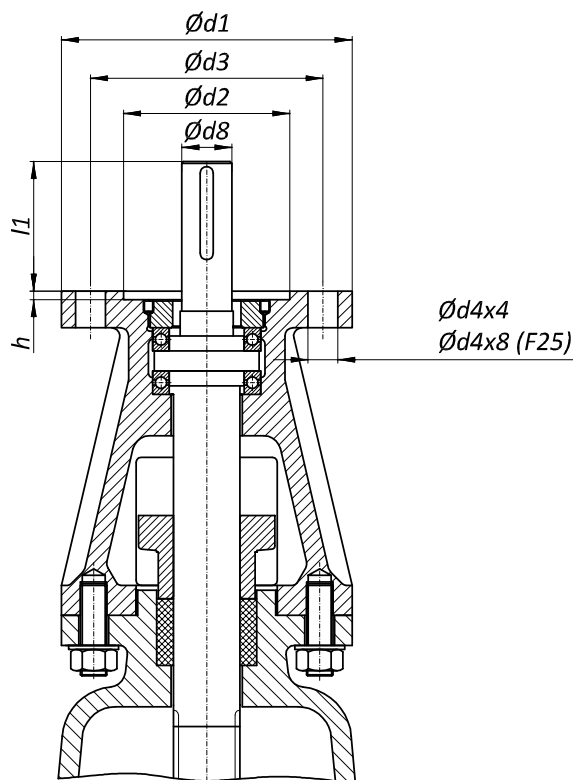
* other nominal sizes on request

DN	L	H ₁	H ₂	B	PN 25								D ₁	Br. okr. / Otvoranje rot./deschidere Turns / lift	m	
					D	k	d ₁	l	n	b	f	kg				
40	240	250	80	150	150	110	84	19	4	19	3	180	15	17		
50	250	265	87,5	160	165	125	99	19	4	19	3	180	18	19		
65	270	320	97,5	205	185	145	118	19	8	19	3	225	18	26		
80	280	335	105	220	200	160	132	19	8	19	3	225	21	34,5		
100	300	380	122,5	260	235	190	156	23	8	19	3	280	24	43,5		
125	325	448	140	295	270	220	184	28	8	19	3	320	30	64		
150	350	480	155	330	300	250	211	28	8	20	3	320	36	85		
200	400	600	190	400	360	310	274	28	12	22	3	360	38	136		
250	450	710	222,5	460	425	370	330	31	12	24,5	3	400	47	200		
300	500	800	252,5	550	485	430	389	31	16	27,5	4	500	56	264		
350	550	890	287,5	585	555	490	448	34	16	30	4	500	55	365		
400	600	1000	320	670	620	550	503	37	16	32	4	640	62	511		
450	650	1100	345	720	670	600	548	37	20	34,5	4	640	70	676		
500	700	1200	375	820	730	660	609	37	20	36,5	4	720	68	797		
600	800	1360	432,5	900	845	770	720	41	20	42	5	720	82	1110		

* other nominal sizes on request
* alte dimensiuni, la cerere

VANA SERTAR CU CORP OVAL CU UNITATE DE ACTIONARE PENTRU MOTOR GATE VALVE WITH OVAL BODY - OUTPUT DRIVE TYPES ACCORDING TO ACTUATOR

Art N°
V2-02



PN 10

DN	Forta Axiala Axial force	Cuplu Torque	rot./deschidere Turns / lift	Conexiune Connection	Dimensiuni ale unitatii de actionare Output drive type dimensions							Motor Actuator
	kN	Nm		ISO 5210	d1	d2	d3	d4	h	d8	l1	AUMA
80	8,5	26	21	F 07	90	70	55	10	4	20	35	SA 07.6
100	9,5	32	24	F 07	90	70	55	10	4	20	35	SA 07.6
125	11	40	30	F 07	90	70	55	10	4	20	35	SA 07.6
150	12,9	46	36	F 07	90	70	55	10	4	20	35	SA 07.6
175	15,1	55,5	34	F 10	125	102	70	12	4	20	45	SA 10.2
200	17,7	73	38	F 10	125	102	70	12	4	20	45	SA 10.2
250	23,9	110	47	F 14	175	140	100	18	5	30	65	SA 14.2
300	31,5	157	56	F 14	175	140	100	18	5	30	65	SA 14.2
350	40,4	202	55	F 14	175	140	100	18	5	30	65	SA 14.2
400	50,7	291	62	F 14	175	140	100	18	5	30	65	SA 14.6
500	79,9	509	544	F 10	125	102	170	12	4	20	45	R1:8+SA 10.2
600	110,1	743	656	F 10	125	102	170	12	4	20	45	R1:8+SA 10.2
700	145,8	1075	656	F 14	175	140	100	18	5	30	65	R1:8+SA 14.2
800	187,1	1450	752	F 14	175	140	100	18	5	30	65	R1:8+SA 14.2
900	233,8	2016	760	F 14	175	140	100	18	5	30	65	R1:8+SA 14.6
1000	286	2470	840	F 14	175	140	100	18	5	30	65	R1:8+SA 14.6
1200	407	4018	1712	F 14	175	140	100	18	5	30	65	R1:16+SA 14.6
1400	550	5430	1933	F 14	175	140	100	18	5	30	65	R1:16+SA 14.6
1600	714,9	7059	1855	F 14	175	140	100	18	5	30	65	R1:16+SA 14.6

PN 16

DN	Forta Axiala Axial force	Cuplu Torque	rot./deschidere Turns / lift	Conexiune Connection	Dimensiuni ale unitatii de actionare Output drive type dimensions							Motor Actuator
	kN	Nm		ISO 5210	d1	d2	d3	d4	h	d8	l1	AUMA
80	9,5	30	21	F 07	90	70	55	10	4	16	35	SA 07.6
100	11,1	38	24	F 07	90	70	55	10	4	16	35	SA 07.6
125	13,6	49	30	F 07	90	70	55	10	4	16	35	SA 07.6
150	16,6	60	36	F 10	125	102	70	12	4	20	45	SA 10.2
200	24,3	100	38	F 10	125	102	70	12	4	20	45	SA 10.2
250	34,2	158	47	F 14	175	140	100	18	5	30	65	SA 14.2
300	46,3	231	56	F 14	175	140	100	18	5	30	65	SA 14.2
350	60,5	303	55	F 14	175	140	100	18	5	30	65	SA 14.6
400	77,1	443	62	F 14	175	140	100	18	5	30	65	SA 14.6
500	121,1	772	544	F 10	125	102	70	12	4	20	45	R1:8+SA 10.2
600	169,4	1144	656	F 14	175	140	100	18	5	30	65	R1:8+SA 14.2
700	226,6	1671	656	F 14	175	140	100	18	5	30	65	R1:8+SA 14.2
800	292,6	2267	752	F 14	175	140	100	18	5	30	65	R1:8+SA 14.6
900	367,3	3168	760	F 14	175	140	100	18	5	30	65	R1:8+SA 14.6
1000	451	3889	1680	F 14	175	140	100	18	5	30	65	R1:16+SA 14.6
1200	644,4	6364	1712	F 14	175	140	100	18	5	30	65	R1:16+SA 14.6
1400	873,2	8622	1933	F 16	210	165	130	22	6	40	80	R1:16+SA 16.2

PN 25

DN	Forta Axiala Axial force	Cuplu Torque	rot./deschidere Turns / lift	Conexiune Connection	Dimensiuni ale unitatii de actionare Output drive type dimensions							Motor Actuator
	kN	Nm		ISO 5210	d1	d2	d3	d4	h	d8	l1	AUMA
80	11,1	35	20	F 07	90	70	55	10	4	16	35	SA 07.6
100	13,5	46	23	F 07	90	70	55	10	4	16	35	SA 07.6
125	17,4	63	24	F 10	125	102	70	12	4	20	45	SA 10.2
150	22,1	80	28	F 10	125	102	70	12	4	20	45	SA 10.2
200	34,2	141	37	F 14	175	140	100	18	5	30	65	SA 14.2
250	49,6	230	39	F 14	175	140	100	18	5	30	65	SA 14.2
300	68,5	343	46	F 14	175	140	100	18	5	30	65	SA 14.6
350	90,9	454	54	F 14	175	140	100	18	5	30	65	SA 14.6
400	116,6	671	432	F 10	125	102	70	12	4	20	45	R1:8+SA 10.2
500	182,9	1166	472	F 14	175	140	100	18	5	30	65	R1:8+SA 14.2
600	258,5	1745	624	F 14	175	140	100	18	5	30	65	R1:8+SA 14.6

