

Test Report

No. NGBEC1700529001

Date: 24 Mar 2017

Page 1 of 6

NINGBO SANZHENG PLASTIC CO.,LTD
ECONOMIC DEVELOPMENT ZONE,YUYAO,ZHEJIANG

The following sample(s) was/were submitted and identified on behalf of the clients as : Cable Ties

SGS Job No. : NP17-000695 - NB
Model No. : PA66
Date of Sample Received : 20 Mar 2017
Testing Period : 20 Mar 2017 - 24 Mar 2017
Test Requested : Selected test(s) as requested by client.
Test Method : Please refer to next page(s).
Test Results : Please refer to next page(s).
Conclusion : Based on the performed tests on submitted sample(s), the results of Lead, Mercury, Cadmium, Hexavalent chromium, Polybrominated biphenyls (PBBs), Polybrominated diphenyl ethers (PBDEs) and Phthalates such as Bis(2-ethylhexyl) phthalate (DEHP) , Butyl benzyl phthalate (BBP), Dibutyl phthalate (DBP) , and Diisobutyl phthalate (DIBP) comply with the limits as set by RoHS Directive (EU) 2015/863 amending Annex II to Directive 2011/65/EU.

Signed for and on behalf of
SGS-CSTC Standards Technical Services Co., Ltd. Ningbo Branch



Iris Xiao
Approved Signatory



SGS-CSTC Standards Technical Services Co., Ltd.
Ningbo Branch Chemical Laboratory

Unless otherwise agreed in writing, this document is issued by the Company subject to its General Conditions of Service printed overleaf, available on request or accessible at <http://www.sgs.com/en/Terms-and-Conditions.aspx> and, for electronic format documents, subject to Terms and Conditions for Electronic Documents at <http://www.sgs.com/en/Terms-and-Conditions/Terms-e-Documents.aspx>. Attention is drawn to the limitation of liability, indemnification and jurisdiction issues defined therein. Any holder of this document is advised that information contained hereon reflects the Company's findings at the time of its intervention only and within the limits of Client's instructions, if any. The Company's sole responsibility is to its Client and this document does not exonerate parties to a transaction from exercising all their rights and obligations under the transaction documents. This document cannot be reproduced except in full, without prior written approval of the Company. Any unauthorized alteration, forgery or falsification of the content or appearance of this document is unlawful and offenders may be prosecuted to the fullest extent of the law. Unless otherwise stated the results shown in this test report refer only to the sample(s) tested.

Attention: To check the authenticity of testing /inspection report & certificate, please contact us at telephone: (86-755) 8307 1443, or email: CN.Doccheck@sgs.com

15/F West of Building 4, Lingyun Industry Park, No.1177 Lingyun Road, Ningbo National Hi-Tech Zone, Ningbo, Zhejiang, China 315040 t E&E (86-574)89070249 www.sgs.com.cn
中国·浙江·宁波市国家高新区凌云路1177号凌云产业园4号楼西1-5层 邮编: 315040 t HL (86-574)89070271 t ML (86-574)89070242 e sgs.china@sgs.com

Test Results :

Test Part Description :

| Specimen No. | SGS Sample ID | Description |
|--------------|------------------|------------------|
| SN1 | NGB17-005290.001 | White cable ties |

Remarks :

- (1) 1 mg/kg = 0.0001%
- (2) MDL = Method Detection Limit
- (3) ND = Not Detected (< MDL)
- (4) "-" = Not Regulated

RoHS Directive (EU) 2015/863 amending Annex II to Directive 2011/65/EU

- Test Method :**
- (1) With reference to IEC 62321-5:2013, determination of Cadmium by ICP-OES.
 - (2) With reference to IEC 62321-5:2013, determination of Lead by ICP-OES.
 - (3) With reference to IEC 62321-4:2013, determination of Mercury by ICP-OES.
 - (4) With reference to IEC 62321:2008, determination of Hexavalent Chromium by Colorimetric Method using UV-Vis.
 - (5) With reference to IEC 62321-6:2015, determination of PBBs and PBDEs by GC-MS.
 - (6) With reference to IEC 62321-8:2013 (111/321/CD),, determination of phthalates by GC-MS.

| <u>Test Item(s)</u> | <u>Limit</u> | <u>Unit</u> | <u>MDL</u> | <u>006</u> |
|----------------------------|--------------|-------------|------------|------------|
| Cadmium (Cd) | 100 | mg/kg | 2 | ND |
| Lead (Pb) | 1000 | mg/kg | 2 | ND |
| Mercury (Hg) | 1000 | mg/kg | 2 | ND |
| Hexavalent Chromium (CrVI) | 1000 | mg/kg | 2 | ND |
| Sum of PBBs | 1000 | mg/kg | - | ND |
| Monobromobiphenyl | - | mg/kg | 5 | ND |
| Dibromobiphenyl | - | mg/kg | 5 | ND |
| Tribromobiphenyl | - | mg/kg | 5 | ND |
| Tetrabromobiphenyl | - | mg/kg | 5 | ND |
| Pentabromobiphenyl | - | mg/kg | 5 | ND |
| Hexabromobiphenyl | - | mg/kg | 5 | ND |
| Heptabromobiphenyl | - | mg/kg | 5 | ND |
| Octabromobiphenyl | - | mg/kg | 5 | ND |
| Nonabromobiphenyl | - | mg/kg | 5 | ND |
| Decabromobiphenyl | - | mg/kg | 5 | ND |
| Sum of PBDEs | 1000 | mg/kg | - | ND |
| Monobromodiphenyl ether | - | mg/kg | 5 | ND |
| Dibromodiphenyl ether | - | mg/kg | 5 | ND |



Test Report

No. NGBEC1700529001

Date: 24 Mar 2017

Page 3 of 6

| <u>Test Item(s)</u> | <u>Limit</u> | <u>Unit</u> | <u>MDL</u> | <u>006</u> |
|-----------------------------------|--------------|-------------|------------|------------|
| Tribromodiphenyl ether | - | mg/kg | 5 | ND |
| Tetrabromodiphenyl ether | - | mg/kg | 5 | ND |
| Pentabromodiphenyl ether | - | mg/kg | 5 | ND |
| Hexabromodiphenyl ether | - | mg/kg | 5 | ND |
| Heptabromodiphenyl ether | - | mg/kg | 5 | ND |
| Octabromodiphenyl ether | - | mg/kg | 5 | ND |
| Nonabromodiphenyl ether | - | mg/kg | 5 | ND |
| Decabromodiphenyl ether | - | mg/kg | 5 | ND |
| Di-butyl Phthalate (DBP) | 1000 | mg/kg | 50 | ND |
| Benzyl Butyl Phthalate (BBP) | 1000 | mg/kg | 50 | ND |
| Bis(2-ethylhexyl) Phthalate(DEHP) | 1000 | mg/kg | 50 | ND |
| Diisobutyl Phthalates (DIBP) | 1000 | mg/kg | 50 | ND |

Notes :

(1) The maximum permissible limit is quoted from RoHS Directive (EU) 2015/863.



Unless otherwise agreed in writing, this document is issued by the Company subject to its General Conditions of Service printed overleaf, available on request or accessible at <http://www.sgs.com/en/Terms-and-Conditions.aspx> and, for electronic format documents, subject to Terms and Conditions for Electronic Documents at <http://www.sgs.com/en/Terms-and-Conditions/Terms-e-Document.aspx>. Attention is drawn to the limitation of liability, indemnification and jurisdiction issues defined therein. Any holder of this document is advised that information contained hereon reflects the Company's findings at the time of its intervention only and within the limits of Client's instructions, if any. The Company's sole responsibility is to its Client and this document does not exonerate parties to a transaction from exercising all their rights and obligations under the transaction documents. This document cannot be reproduced except in full, without prior written approval of the Company. Any unauthorized alteration, forgery or falsification of the content or appearance of this document is unlawful and offenders may be prosecuted to the fullest extent of the law. Unless otherwise stated the results shown in this test report refer only to the sample(s) tested.

Attention: To check the authenticity of testing /inspection report & certificate, please contact us at telephone: (86-755) 8307 1443, or email: CN.Doccheck@sgs.com

SGS-CSTC (China) Technical Services Co., Ltd.
Ningbo Branch Chemical Laboratory

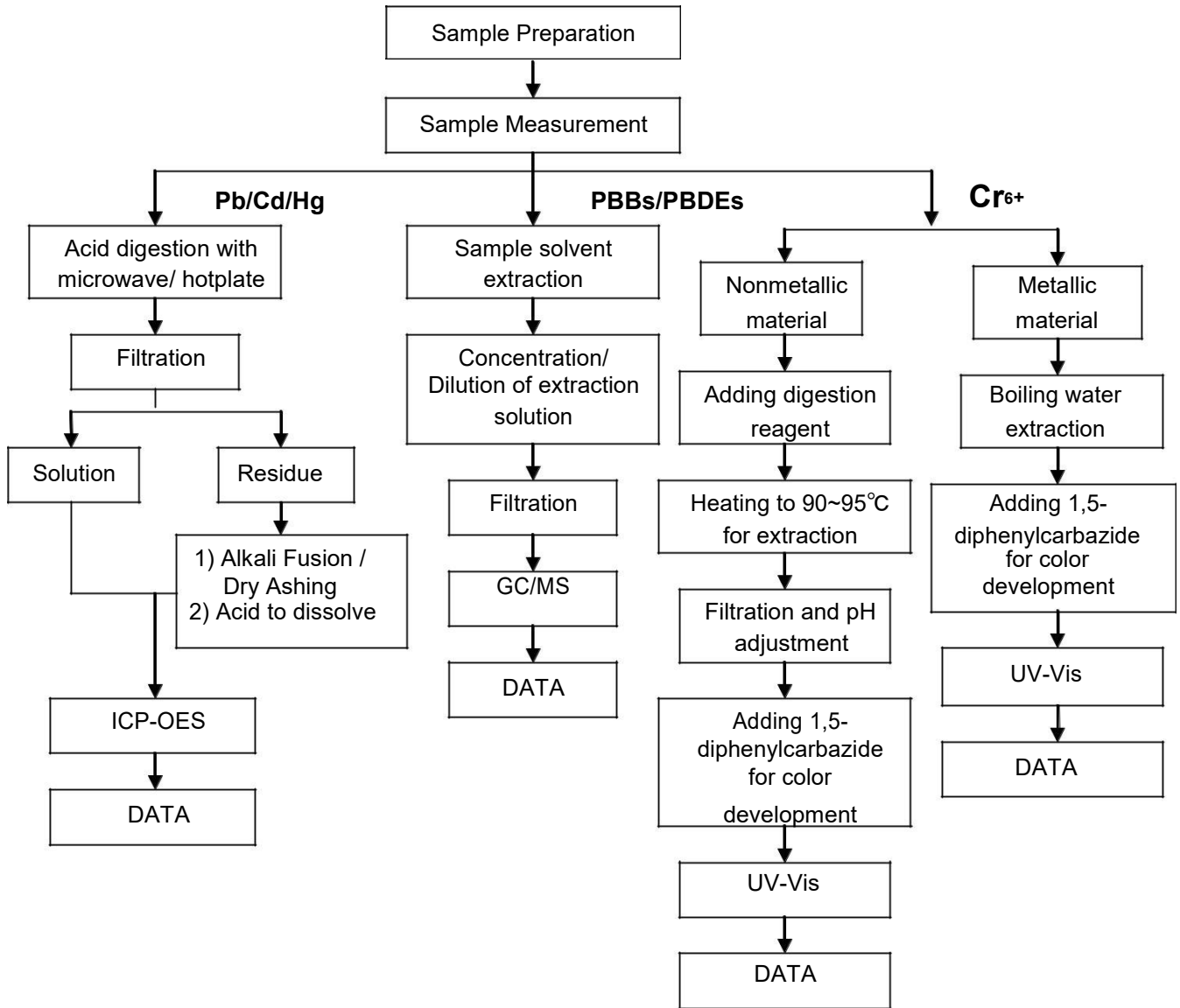
15/F West of Building 4, Lingyun Industry Park, No.1177 Lingyun Road, Ningbo National Hi-Tech Zone, Ningbo, Zhejiang, China 315040 t E&E (86-574)89070249
中国·浙江·宁波市国家高新区凌云路1177号凌云产业园4号楼西1-5层 邮编: 315040 t HL (86-574)89070271 t ML (86-574)89070242 e sgs.china@sgs.com

www.sgsgroup.com.cn

ATTACHMENTS

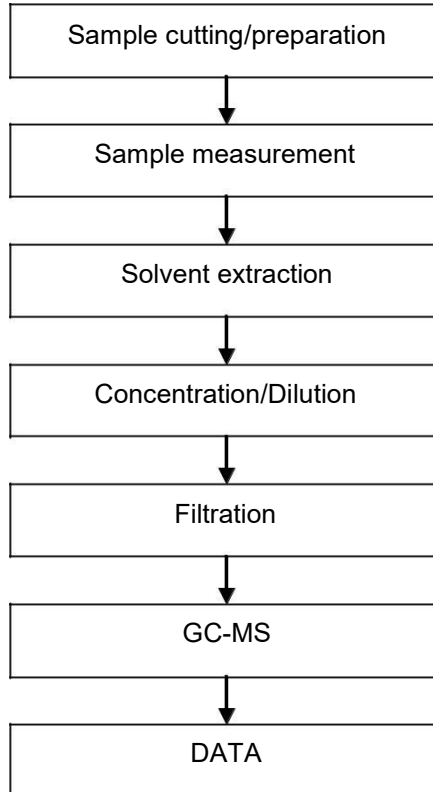
RoHS Testing Flow Chart

1) These samples were dissolved totally by pre-conditioning method according to below flow chart.
(Cr⁶⁺ and PBBs/PBDEs test method excluded)

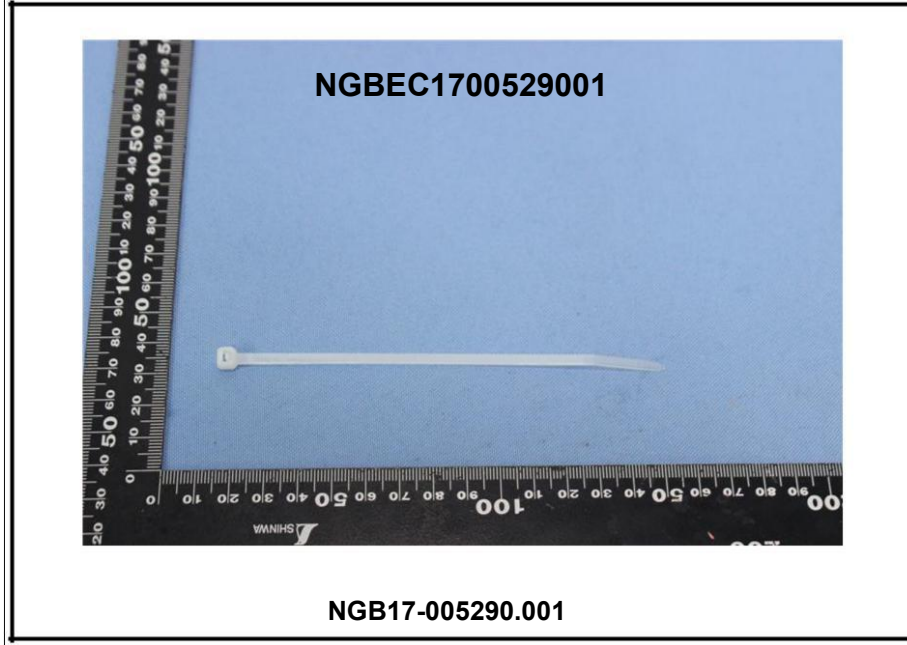


ATTACHMENTS

Phthalates Testing Flow Chart



Sample photo:



SGS authenticate the photo on original report only

*** End of Report ***

