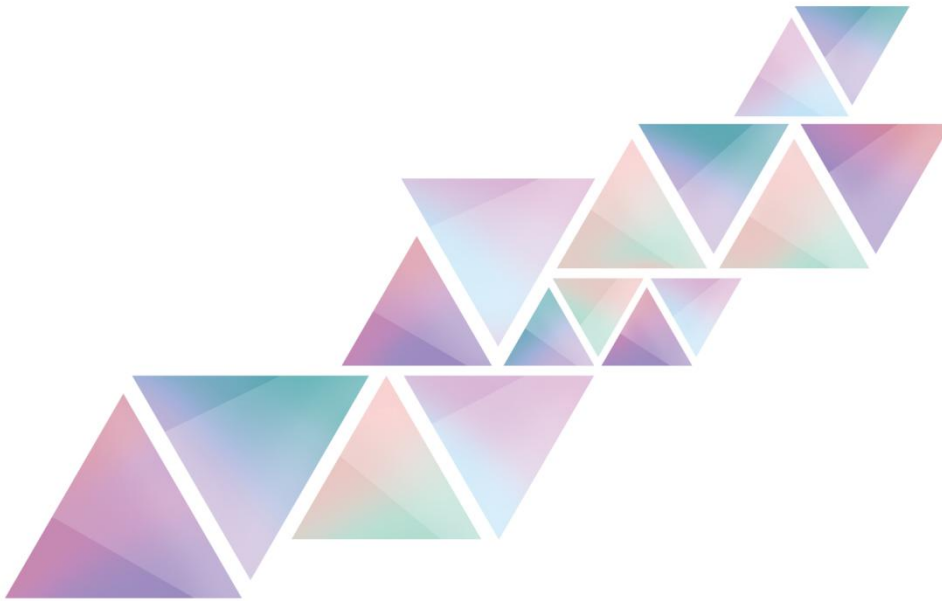


GS062

Temperature and humidity sensor

Version: v1.1

Release Date: October 2021



Specification



TEL 400 159 0808
Web: www.kystar.com.cn

Beijing KYSTAR Technology Co., Ltd.

Professional Ultra HD Video Display
Control system integrated solution and service provider

Version record

version number	Change details	release time
V1.0	first release	2018.12.20
V1.1	change cover	2021.10.25

1 Product description

1.1 Product Applications

GS062 is a high-precision temperature and humidity sensor with beautiful and compact appearance, standard guide rail structure design, simple wiring and easy installation. It uses imported high-precision probes to ensure the excellent measurement performance of the product; super stability and anti-interference ability, strong product protection performance, first-level lightning protection. RS485 interface, multiple modules can be connected to the bus network together, and the environment of multiple sites can be monitored in real time.

1.2 Features

- RRS485 interface, the communication distance can reach 1200 meters;
- Imported probe with high precision, wide range and good consistency;
- Standard guide rail structure design, easy to install;
- Super stability and anti-interference ability;
- Voltage input, DC5V~DC12V;
- Standard MODBUS RTU protocol;
- The product has strong protection performance and first-level lightning protection.

2 Appearance

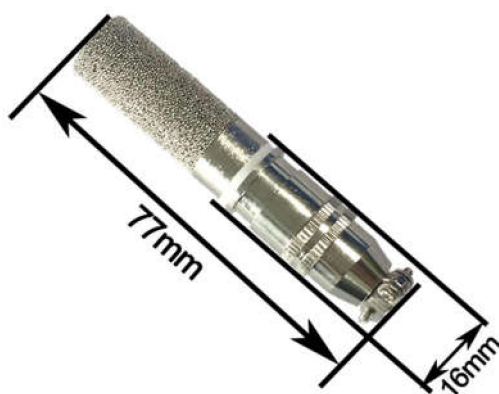


Temperature and humidity sensor

3 Technical parameter

Project	parameter value
Rated voltage	DC5V~DC12V
Measuring range	Temperature: -40°C~120°C Humidity: 0~100%rh
measurement accuracy	Temperature: $\pm 0.3^{\circ}\text{C}$ Resolution 0.1°C Humidity: $\pm 3\%rh$ Resolution 0.1rh
Output Interface	RS485
Protocol	MODBUS RTU
Communicate address	1-247
baud rate	1200 bit/s, 2400 bit/s, 4800 bit/s, 9600 bit/s, 19200 bit/s
Average power consumption	<0.1W
Cable length	5 meters (standard)
Install method	Rail Mount, Indoor Wall Mount, Ceiling Mount

4 Dimensions



Temperature and humidity sensor