



PCI



PTA



IVR



INR



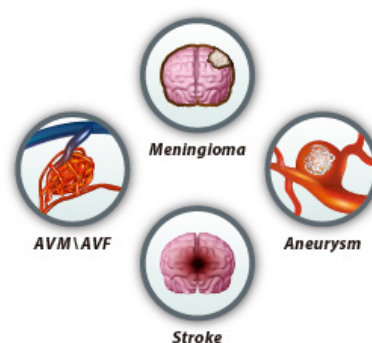
Diagnostic devices

ASAHI CHIKAI Family

Neurovascular GuideWire

Providing good torque response, support and durability for neuro interventional procedures

ASAHI CHIKAI family of guide wires has been originally developed based on Asahi Intecc's unique set of technologies which accomplished great success in the field of cardiovascular interventions.



Technologies with Dual-coil design using ACT ONE



Employs the ASAHI brand rope coil, which provides torqueability, flexibility and resiliency.

ASAHI INTECC CO., LTD.'s unique technologies in wire drawing, wire forming, torque transmission and coating are utilized to create highly responsive guide wires featuring ASAHI's ACT ONE, dual-coil design.



Key features

Precise torque response

ACT ONE provides exceptional torque response in tortuous anatomy.

Durable tip-shape retention

Incorporating with ACT ONE, re-shapable pre-shaped round curve and 90 degree angle enhance tip shape memory and durability.



Angle 90°

* Available for CHIKAI black



Re-shapable round curve

Positioning



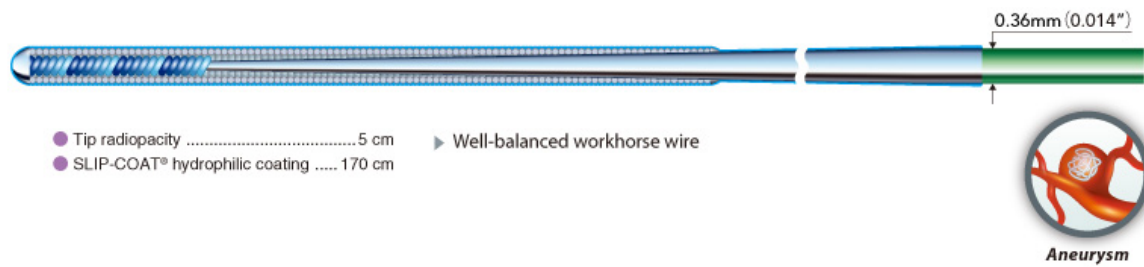
ASAHI
CHIKAI 誓
 Neurovascular Guide Wire



ASAHI CHIKAI, ASAHI CHIKAI 10 and ASAHI CHIKAI 008 are designed for an optimal balance between tip flexibility and microcatheter support

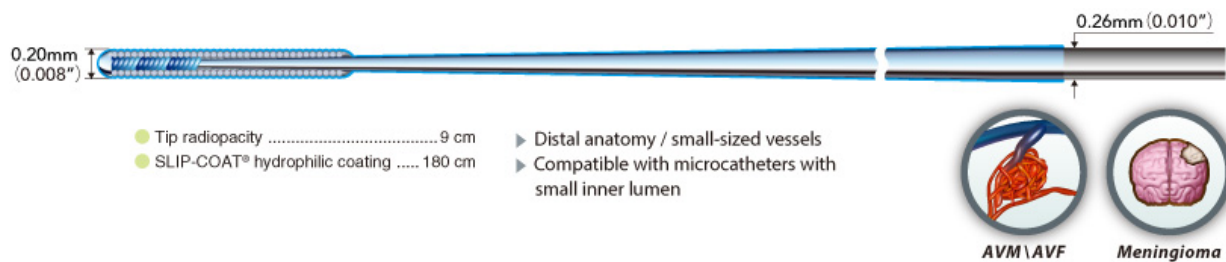
ASAHI CHIKAI (200cm, 300cm)

- 0.36mm(0.014") workhorse guide wire



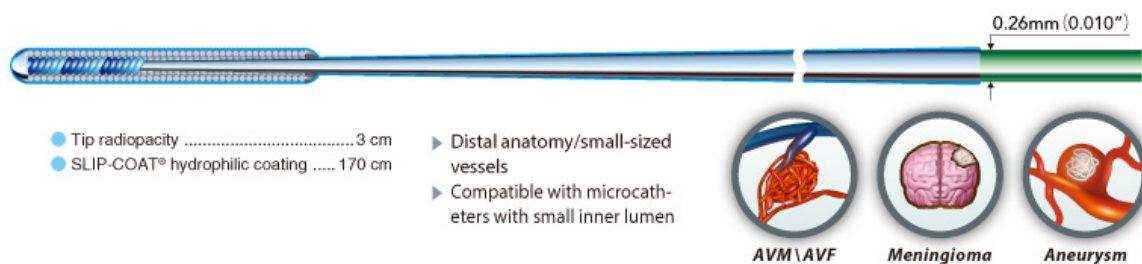
ASAHI CHIKAI 008 (200cm)

- Flexible tip & distal body



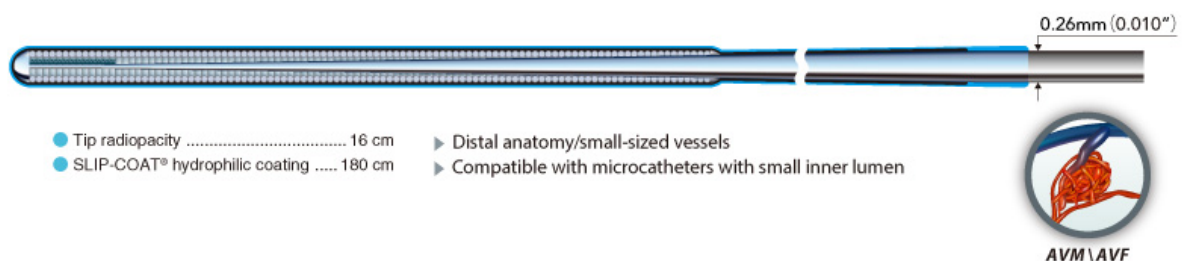
ASAHI CHIKAI 10 (200cm, 300cm)

- Balanced tip and higher body support



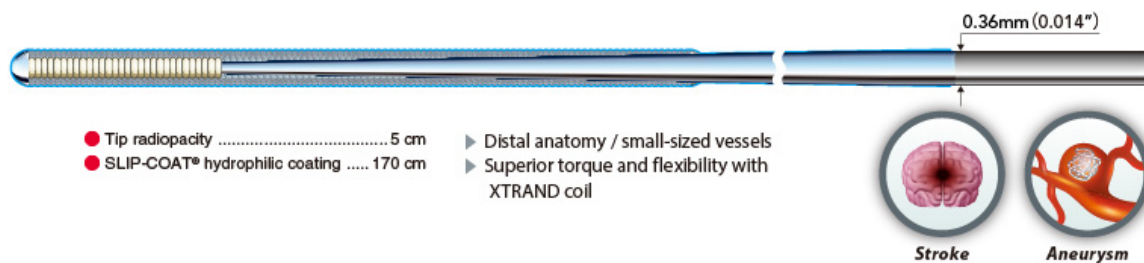
ASAHI CHIKAI X 010 (200cm)

- Flexible tip & distal body



ASAHI CHIKAI X 014 soft (200cm)

- Flexible tip & high Torque response



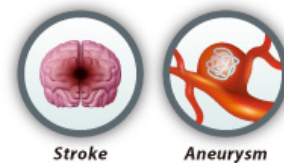
Detail

ASAHI CHIKAI black

Neurovascular Guide Wire

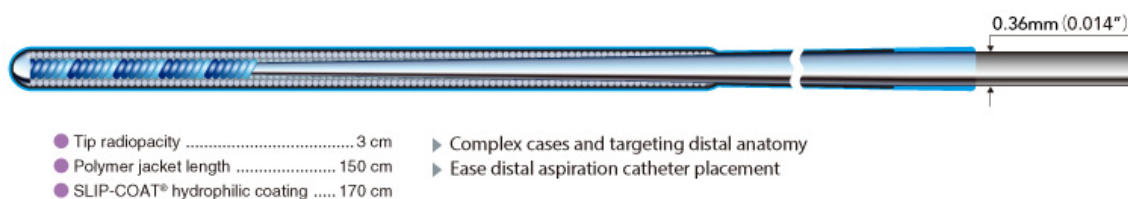


Providing excellent support and less friction due to polymer jacket and hydrophilic coating for smooth delivery of microcatheter



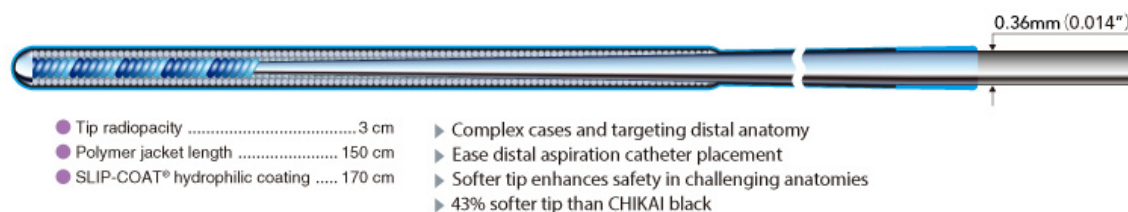
ASAHI CHIKAI black (200cm)

- 0.36mm(0.014") guide wire with enhanced lubricity



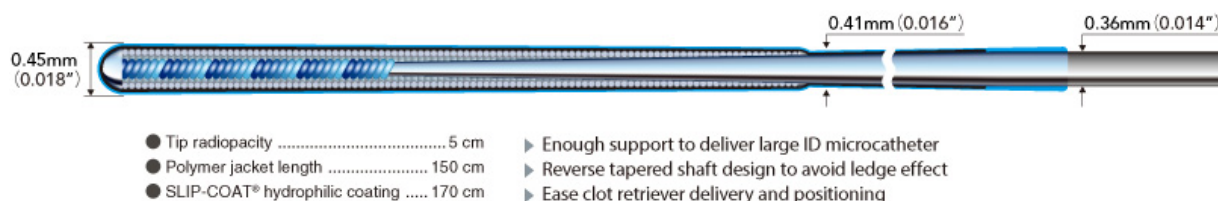
ASAHI CHIKAI black 14 soft tip (200cm)

- Safe manipulation



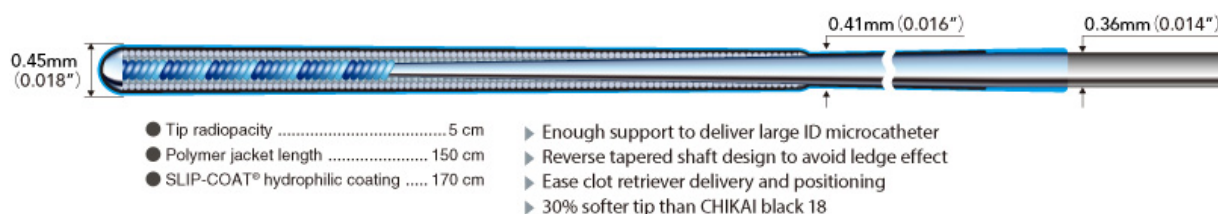
ASAHI CHIKAI black 18 (200cm)

- Speciality guide wire










ASAHI CHIKAI black 18 soft tip (200cm)

- Speciality guide wire



Specification & ordering information

Product	Catalog No.	O.D.	Coating	Usable length	Coil length	Radiopaque length	Tip shape
ASAHI CHIKAI 008	WAIN-CKI-008-200	0.20/0.26mm (0.008/0.010inch)	Hydrophilic coating (SLIP-COAT®) 180cm	200cm	9cm	9cm	Straight
ASAHI CHIKAI 10	WAIN-CKI-10-200	0.26mm (0.010inch)	Hydrophilic coating (SLIP-COAT®) 170cm	200cm	9.5cm	3cm	Straight
	WAIN-CKI-10-300	0.26mm (0.010inch)	Hydrophilic coating (SLIP-COAT®) 170cm	300cm	9.5cm	3cm	Straight
ASAHI CHIKAI X 010	AIN-CKX-10-200-R	0.26mm (0.010inch)	Hydrophilic coating (SLIP-COAT®) 180cm	200cm	16cm	16cm	Re-shapeable round curve
ASAHI CHIKAI X 014 soft	AIN-CKX-14-200-SFT	0.36mm (0.014inch)	Hydrophilic coating (SLIP-COAT®) 170cm	200cm	33cm	5cm	Straight

Product	Catalog No.	O.D.	Coating	Usable length	Coil length	Radiopaque length	Tip shape
ASAHI CHIKAI	WAIN-CKI-200	0.36mm (0.014inch)	Hydrophilic coating (SLIP-COAT®) 170cm	200cm	30cm	5cm	Straight
	WAIN-CKI-200-RC	0.36mm (0.014inch)	Hydrophilic coating (SLIP-COAT®) 170cm	200cm	30cm	5cm	 Re-shapeable round curve
	WAIN-CKI-300	0.36mm (0.014inch)	Hydrophilic coating (SLIP-COAT®) 170cm	300cm	30cm	5cm	Straight
	WAIN-CKI-300-RC	0.36mm (0.014inch)	Hydrophilic coating (SLIP-COAT®) 170cm	300cm	30cm	5cm	 Re-shapeable round curve
ASAHI CHIKAI black	WAIN-CKI-200-BS	0.36mm (0.014inch)	Polymer jacket 150cm / Hydrophilic coating (SLIP-COAT®) 170cm	200cm	30cm	3cm	 Re-shapeable round curve
	WAIN-CKI-200-BA	0.36mm (0.014inch)	Polymer jacket 150cm / Hydrophilic coating (SLIP-COAT®) 170cm	200cm	30cm	3cm	 Angle 90°
ASAHI CHIKAI black 14 soft tip	AIN-CKI-200-B-SFT	0.36mm (0.014inch)	Polymer jacket 150cm / Hydrophilic coating (SLIP-COAT®) 170cm	200cm	30cm	3cm	 Re-shapeable round curve
ASAHI CHIKAI black 18	WAIN-CKI-18-200-BS	0.45/0.36mm (0.018/0.014inch)	Polymer jacket 150cm / Hydrophilic coating (SLIP-COAT®) 170cm	200cm	34cm	5cm	 Re-shapeable round curve
ASAHI CHIKAI black 18 soft tip	AIN-CKI-18-200-SFT	0.45/0.36mm (0.018/0.014inch)	Polymer jacket 150cm / Hydrophilic coating (SLIP-COAT®) 170cm	200cm	34cm	5cm	 Re-shapeable round curve



"ASAHI", "CHIKAI" and "ACT ONE" are trademarks or registered trademarks of ASAHI INTECC CO., LTD. in Japan and other countries.

