



CERTIFICAT DE CONFORMITATE

Uși radioprotectoare (echiv. plumb 2 mm)

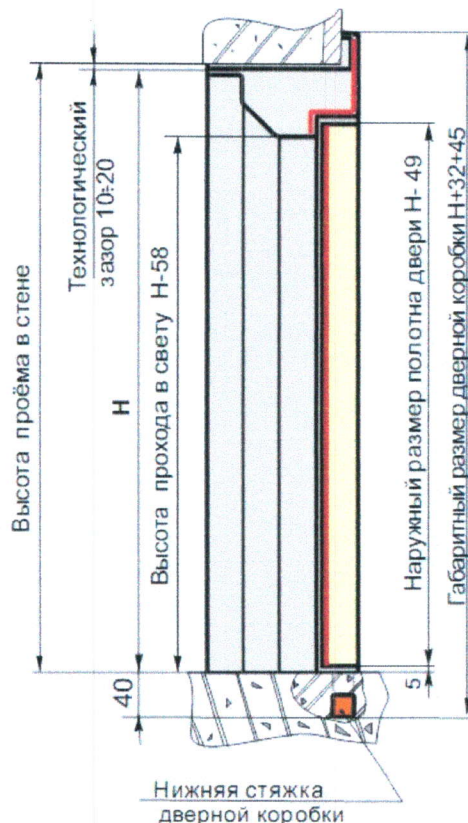
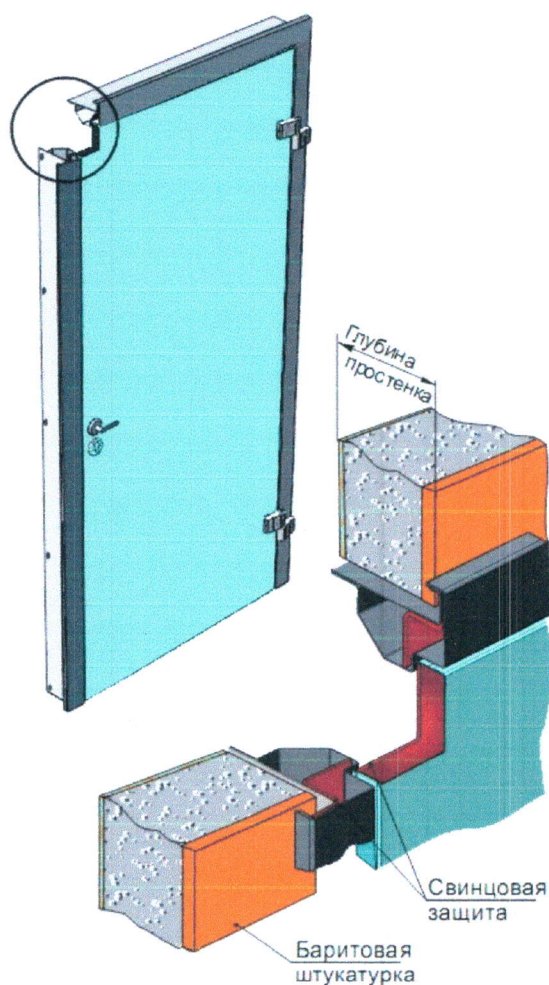
Descriere:

Uși radioprotectoare s-au panouri plumbate cu deschidere glisantă s-au pliantă . În calitate de material radioprotector este utilizat folia de plumb cu grosimea 2 mm.

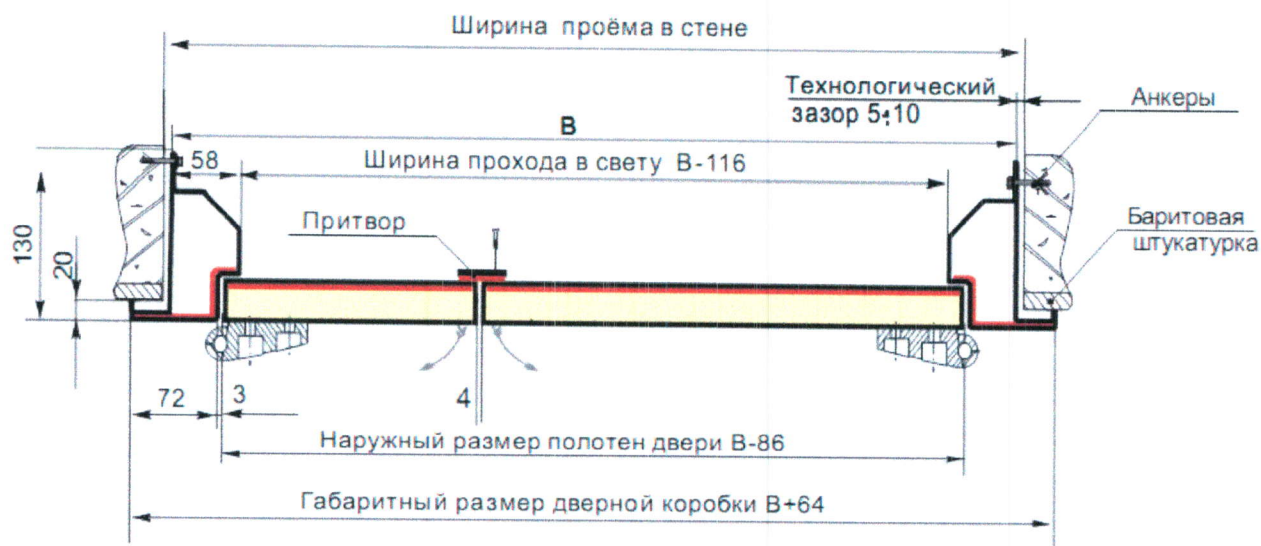
Construcția canatului :

- Rama canatului este din metal dur de 2 mm.
- Miezul canatului format din :
 1. Placă MDF melaminată
 2. Folie de plumb
 3. Placă MDF melaminată

Imagine Nr.1



Imagine Nr. 2



Accesorii :

- 2 Balamale ;
- Miner;
- Broască cu 3 chei.

Conformitate:

Uşile radioprotectoare sunt confecţionate în conformitate cu normele fundamentale în radioprotecţie NFRP 2000.

Materialul radioprotector este fabricat în Polonia, în baza certificatului de calitate ISO 9001-2008.

Remarcă:

Uşile sunt fabricate în baza cerinţelor beneficiarului, şi standardelor internaţionale. Echivalentul de plumb este calculat în baza specificaţiei tehnice a dispozitivului radiologic şi suprafaţa încăperilor.

Termenul de garanţie:

12 luni din data instalării

Efectuat:
Inginer ANCOTEC-SISTEM SRL
Railean Vitalie





JS-METALS Janusz Skrzynecki
53-609 Wrocław; ul. Wagonowa 14-18
NIP 866-142-32-79 REGON 020090364
e-mail: biuro@js-metals.pl
www.js-metals.pl

ORYGINAŁ

ATEST
ŚWIADECTWO ODBIORU WYROBU

Nr: JS/410/2021

Zamawiający:

Ancotec- Sistem S.R.L

Adres wysyłkowy:

MD-2028 Chisinau, Miorita str 5
Republic of Moldova

Faktura sprzedaży:

0006/21/DEX z 31.08.2021

Charakterystyka dostarczonego wyrobu.

Rodzaj i cecha materiału

Nr dostawy

Wymiary lub nr rys.

Stan

Blacha Pb. PB99,94 Cu

17590

2,0x1000x2000

Walcowane

A. Skład chemiczny

Nr wytopu	Sn %	Cu %	Zn %	Sb %	Bi %	Ag %	Pb %	
17590	<0,05	0,03 – 0,06	< 0,001	<0,005	<0,100	< 0,005	Reszta	

Wysłany materiał odpowiada specyfikacji normy EN 12588
Atest sporządzono na podstawie analizy laboratoryjnej Producenta:

"JS-METALS" Janusz Skrzynecki
53-609 Wrocław, ul. Wagonowa 14-18
NIP 866-142-32-79 Regon 020090364
tel. +48(71) 791-77-01, fax +48(71) 793-51-91

Rolled Lead Sheet 2,0x1000x2000 – 10 szt.

Razem
Waga netto - 455 kg
Waga brutto-480 kg

Ilość materiału:

Nr wytopu:	2,0 mm	-	20 m ²
Nr wytopu:		-	
Nr wytopu:			
Nr wytopu:			

Wrocław dnia: 2021-08-31

Razem: - 20 m²

Corning® Med-X® Glass

Radiation Shielding Glass for medical, technical and research applications.

Corning is a world leader in Radiation Shielding Glass offering some of the largest glass sizes available. **Corning® Med-X®** Glass is supplied as polished plates with dimensions up to 2800 x 1400 mm and is available worldwide with quick delivery times.



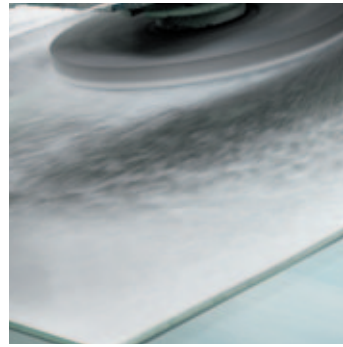
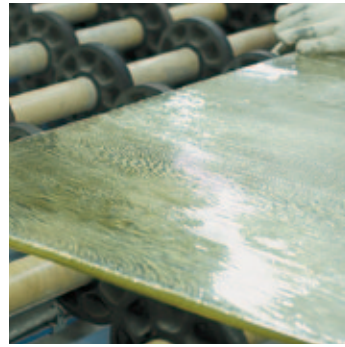
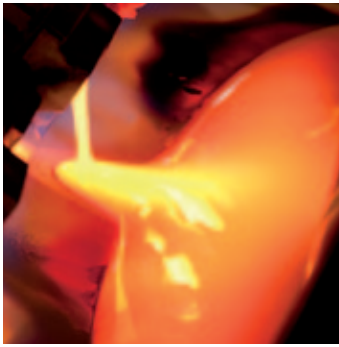
Key benefits

- Shields against X-Rays from equipment operating in the 80 to 300 kV range.
- High Barium and lead content providing optimum protection with excellent visual clarity.
- Supplied as polished plates cut to customer requirements up to 2800 x 1400 mm, allowing architects to design viewing windows with a wider field of vision.
- Also available in sizes cut specifically to customer requirements (with cut edges ground or polished and finished with safety chamfers).
- Extensive stocks held in all plate sizes and thicknesses at distribution points worldwide, for immediate cutting and despatch.

Applications

- Viewing windows for X-Ray, Angiography Rooms, CT Scans.
- Screens for medical diagnostics.
- Protection windows in laboratories.
- Airport security X-ray screens.
- Lenses for safety goggles.

CORNING



Shielding Characteristics

Glass Thickness		Minimum lead equivalence (mm) for stated X-Ray tube voltage							Max. Plate Mass	
mm	inches	80kV	100kV	110kV	150kV	200kV	250kV	300kV	kg/m ²	lbs/ft ²
4.0-5.5	0.157 - 0.217	1.4	1.4	1.3	1.2	1.0	1.0	1.0	26.4	5.4
5.0-6.5	0.197 - 0.256	1.7	1.7	1.7	1.5	1.3	1.3	1.3	31.2	6.4
5.7-7.0	0.224 - 0.276	1.9	1.9	1.9	1.7	1.5	1.5	1.5	33.6	6.9
7.0-8.5	0.276 - 0.335	2.3	2.3	2.3	2.1	1.8	1.8	1.8	40.8	8.4
8.5-10.0	0.335 - 0.394	2.7	2.8	2.9	2.6	2.1	2.1	2.2	48.0	9.8
10.0-12.0	0.394 - 0.472	3.2	3.2	3.3	2.9	2.5	2.6	2.6	57.6	11.8
11.0-13.0	0.433 - 0.512	3.6	3.5	3.6	3.2	2.8	2.8	2.9	62.4	12.8
12.0-14.0	0.472 - 0.551	4.0	3.8	4.0	3.5	3.0	3.1	3.2	67.2	13.8
14.0-16.0	0.551 - 0.630	4.7	4.5	4.6	4.1	3.5	3.6	3.7	76.8	15.7
16.0-18.0	0.630 - 0.709	5.3	5.1	5.3	4.7	4.0	4.1	4.3	86.4	17.7
18.0-20.0	0.709 - 0.787	6.0	5.7	5.9	5.2	4.4	4.6	4.8	96.0	19.7

Data provided by the Public Health England (PHE).

Attenuation measured using the narrow beam method, in accordance with IEC 61331:2014.

Physical Properties

Optical Properties

Refractive Index nd	1.76
Transmission % @ 550nm through 5mm path	≥85.0

Chemical Properties

Lead (Pb)	52%
Barium (Ba)	17%

Mechanical Properties

Density (g/cm ³)	4.8
Knoop Hardness (kg/mm ²)	409
Young's Modulus (GPa)	62.6
Torsion Modulus (GPa)	24.8
Poisson's Ratio	0.26
Coefficient of Thermal Expansion (x10 ⁻⁷ /°C)	78.8

Suitable for laminating using PVB interlayers, and can be fitted into sealed double-glazed units.



The production of Corning S.A.S. is strictly controlled and manufactured in accordance with the Quality Standard ISO 9001, the Environmental Standard ISO 14001 and the Health & Safety Standard OHSAS 18001.

For more information contact:
radiationglass@corning.com

To contact the nearest Corning sales office:
www.corning.com/med-x

This publication gives a general description of the product and materials. It is the responsibility of the users to ensure that the proposed application of the product is appropriate and that such application complies with all relevant local and national legislation, standards, code of practice, and other requirements. To the extent allowed by law, Corning and its affiliates hereby disclaim all liability arising from any error or omission from this publication and all the consequences of relying on it. The information contained herein is based upon data considered to be accurate. However, no warranty is expressed or implied regarding the performance of this product. The only applicable warranties are those that are set out in a contract or in Corning's general sales conditions.

Corning SAS - 7, bis avenue de Valvins, CS 70156 Samois-sur-Seine, 77215 AVON Cedex, France
Tel +33 1 64 69 71 11

www.corning.com/med-x

Corning® and Med X® are trademarks of Corning Incorporated, Corning, NY

© 2017 Corning Incorporated. All rights reserved

CORNING

ORGANISMUL DE CERTIFICARE „CERTMATCON“



CertMatCon

CERTIFICAT DE CONFORMITATE

Nr. de înregistrare **13 C001718-21**

Data emiterii: 05 aprilie 2021

Valabil pînă la: 05 aprilie 2022

ORGANISMUL DE CERTIFICARE

CERTMATCON mun. Chișinău, str. Uzinelor, 4/2, etaj 4, of. 4, MD2023, tel. 022-903-001; cell. 078-191-001,
e-mail: office@certmatcon.md, WWW.CERTMATCON.MD.

PRIN PREZENTUL DOCUMENT SE CONFIRMĂ FAPTUL, CĂ PRODUSELE IDENTIFICATE ASTFEL:

Îmbrăcăminte din PVC, pentru pardoseli (linoleum omogen/heterogen, LVT, SPC), marca comercială «GRABOPLAST» (conform Anexă - 6 poziții).

Contract de livrare cu «Graboplast Floor Covering Manufacturers» LTD, Ungaria.

SÎNT CONFORME CU CERINȚELE STABILITE ÎN:
RNI 06-5.3.35:2001 pct. 2.2; SM EN 14041:2018.

Codul NCM
3918

FABRICANT

«Graboplast Floor Covering Manufacturers» LTD, Ungaria.

Codul țării
HU

SOLICITANT

CLUBUL DE HANDBAL "OLIMPUS-85" SRL,
str. Ștefan Neaga, 37, mun. Chișinău, Republica Moldova.

Codul IDNO
1004600009626

CERTIFICATUL ESTE ELIBERAT ÎN BAZA

Raport de evaluare final Nr. 964 din 05.04.2021, eliberat de OC "CertMatCon", mun. Chișinău, str. Uzinelor, 4/2, etaj 4, of. 4, MD 2023; Raport de încercări Nr. 056/1 din 02.04.2021 eliberat de Centrul de Încercări, Expertiză și Cercetare (CÎEC) din Cadrul "CertMatCon" SRL, mun. Chișinău, str. Feredeului, 12, MD 2005; Certificat de conformitate Nr. 1415-CPD-28-(C-49/2006) din 25.01.2012, eliberat de EMI Epitesugyi Minosegellenorzo Innovacios Nonprofit Kft, notificat cu Nr. 1415, Ungaria.

INFORMAȚIE SUPPLEMENTARĂ:

Schema 2. Certificare voluntară. Domeniu nereglementat. Certificatul este valabil doar în cazul asigurării cu informație în limba de stat la fiecare ambalaj/unitate de produs conform legislației în vigoare.

Seria V № 000535



Conducătorul OC

PUHA Ion

În atenția antreprenorilor și organelor de control!
Copiile certificatelor de conformitate se legalizează în modul stabilit de OC „CERTMATCON“, informații pe www.certmatcon.md
Falsificarea certificatelor se pedepsește conform legislației



AnexăFila File
1 1la certificatul de conformitate
Nr. 13 C001718-21 din:

05 aprilie 2021

Lista produselor concrete
asupra cărora se extinde acțiunea certificatului de conformitate

Nr.	Produs
1	Linoleum: Rubin, Rubin Chips, Rubin Astral, Press Corisma, Kingfloor, Extra, TR, Plus, Terrana 01eco, 16/S, Terrana 22, Press Charisma.
2	Linoleum comercial: Antistatic, Antibacterial, Sound, Sound Tex 5,0; Acoustic: Color, Natural, Uni, Standart, Metal, Acoustic silver Knight, PRO, NEO; Diamond Standart: Color, Metal, Natural, Forte, Plaza, Fresh; Diamond Standart Evolution, Talent, Aura; Diamond tech Metal, tech Color, tech Natural; Diamond: Tech Silver Knight, Silver Knight Wall; Brilliant, Las Vegas, Lux, Studio 15, Cristal, Paravan, Sirius; Safety Ecosafe, Ecotech, Girabiol Stop 20 JSK, Grabiol Silver Knight, Safe Decor; Astral: Color, Natural, Top Extra, Chips, Terrana Top, Wall Covering, Silence, Muravyl, Unifloor, Studio 15, Soundtex 5.0, Cosmos, Flash, Marble.
3	Linoleum pentru încăperi sportive și fitness: Grabosport, Mega 10.2, Mega Plus +12,3, Mega Ultimate 14,3, Extreme 80, Extreme Wool, Supreme 67, Supreme wood 67, Elite 60, Elite wood 60, Prima, Prima wood 67, Graboflex Start, Start plus, GymFit 60, GymFit 50, GymFit 40, GymFit 25, Stamina, Stamina wood, Silver Knight Fitness, Rocket, Vaporex, Unifloor Balet, Broadway 17, Grabo Duelt, Broadway Balet 20, Evidence 25, Evidence 60.
4	Linoleum medicinal: Silver Knight 2,0; 3,0; 3,2; 3,4mm.
5	Linoleum omogen: Antistatic, Antibacterial, PUR, Fortis Grabo, Fitt, Conducto, Triumph, Polis.
6	Vinyl Floor Comercial: Antibacterial Plank it, Domino, Robust, Ideal, SPC.

Seria A № 001709



Conducătorul OC

PUHA Ion



Anexa nu este valabilă în lipsa certificatului de conformitate