

**A.R.C.
LASER**

enlighten your surgery.

FOX⁵¹⁴
OPHTHALMOLOGY LASER

**ARGON
green**
the original

ARGON
WAVELENGTH

BATTERY
POWERED

MICROSECOND
PULSES

FOX GREEN, 1.5 W

IDEAL FOR:

- ENDOCOAGULATION
- LIO



BACK ^{TO} THE
FUTURE

LASER...INNOVATION
MADE IN GERMANY

www.arclaser.com

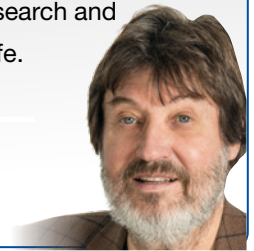
BACK ^{TO} THE FUTURE



The long history of Photocoagulation

I have experienced all the research from Xenon-Lamp via the argon laser to the KTP-Lasers.

Today the latest so called „Argon“ is as compact as a camera - If I would have known that 43 years ago, we could have saved a lot of work in research and development – That's Life.



R. Thyzel



A Meditec Dye-Laser

The picture shows the Dye laser with all the colors from green to yellow to red. The housing dimensions have decreased significantly, the systems have been effective and have become established in clinical therapy.



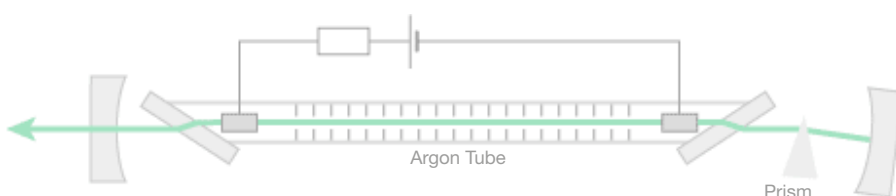
The A.R.C. KTP-Laser in 2009 with 532 nm

The “second generation” KTP lasers substituted the argon wavelength (514 nm). These lasers became more affordable, and were soon appearing in community hospitals and even physicians' offices.



Our new FOX 514 nm ENDO

The refinement of technology in medical lasers have made it possible to treat conditions previously considered untreatable, or difficult to treat. Patients benefit by improved results and less cost. Our new ENDO (1.5 Watt, cw) features microsecond pulses.



Microsecond pulses promise to become gold standard

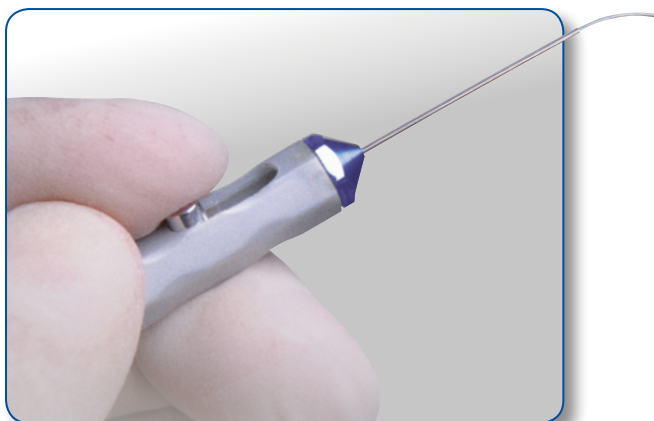
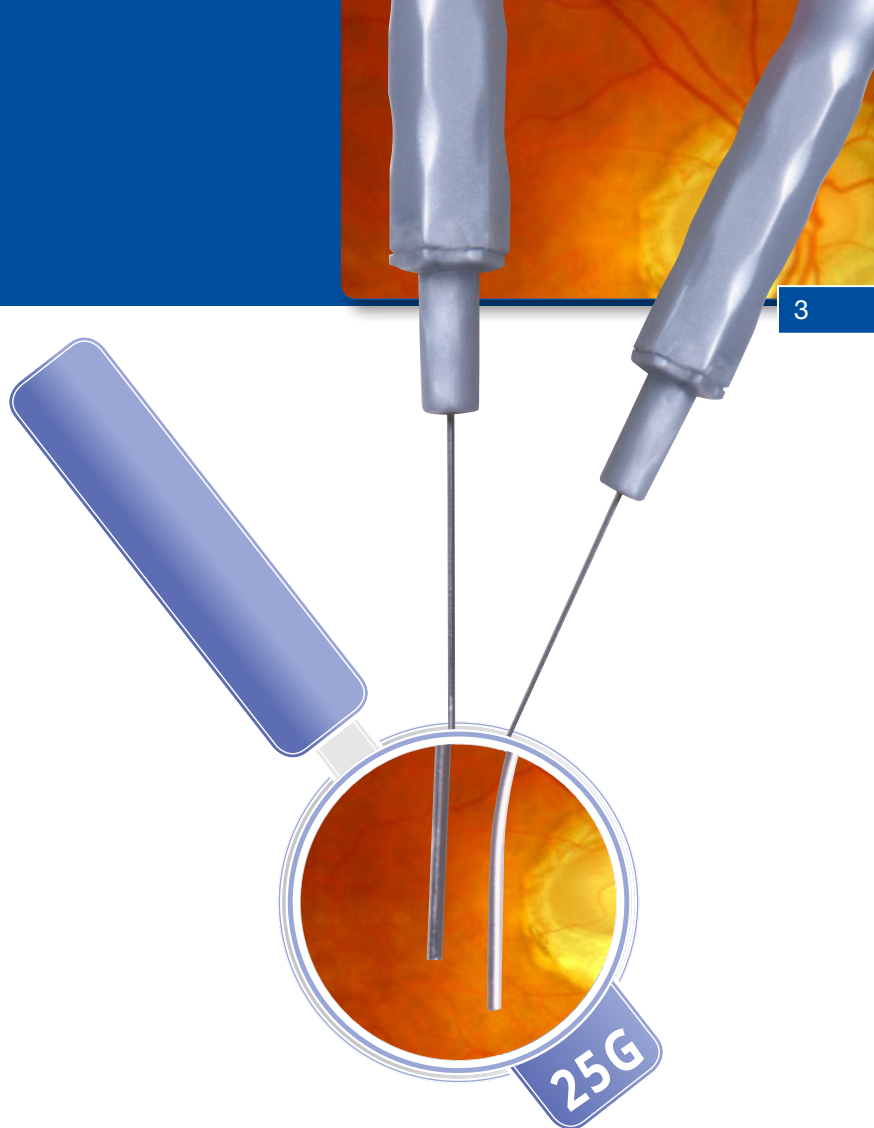
”

Already in 2007 first positive effects of microsecond pulses with diode lasers have been observed on the visual acuity and the absorption of a Retinopathia centralis serosa.

Further studies and a longer follow-up were necessary to evaluate this technique.

“

Klin Monatsbl Augenheilkd 2007; 224 - KV64
DOI: 10.1055/s-2007-1004503 (translated)



Universal hand pieces

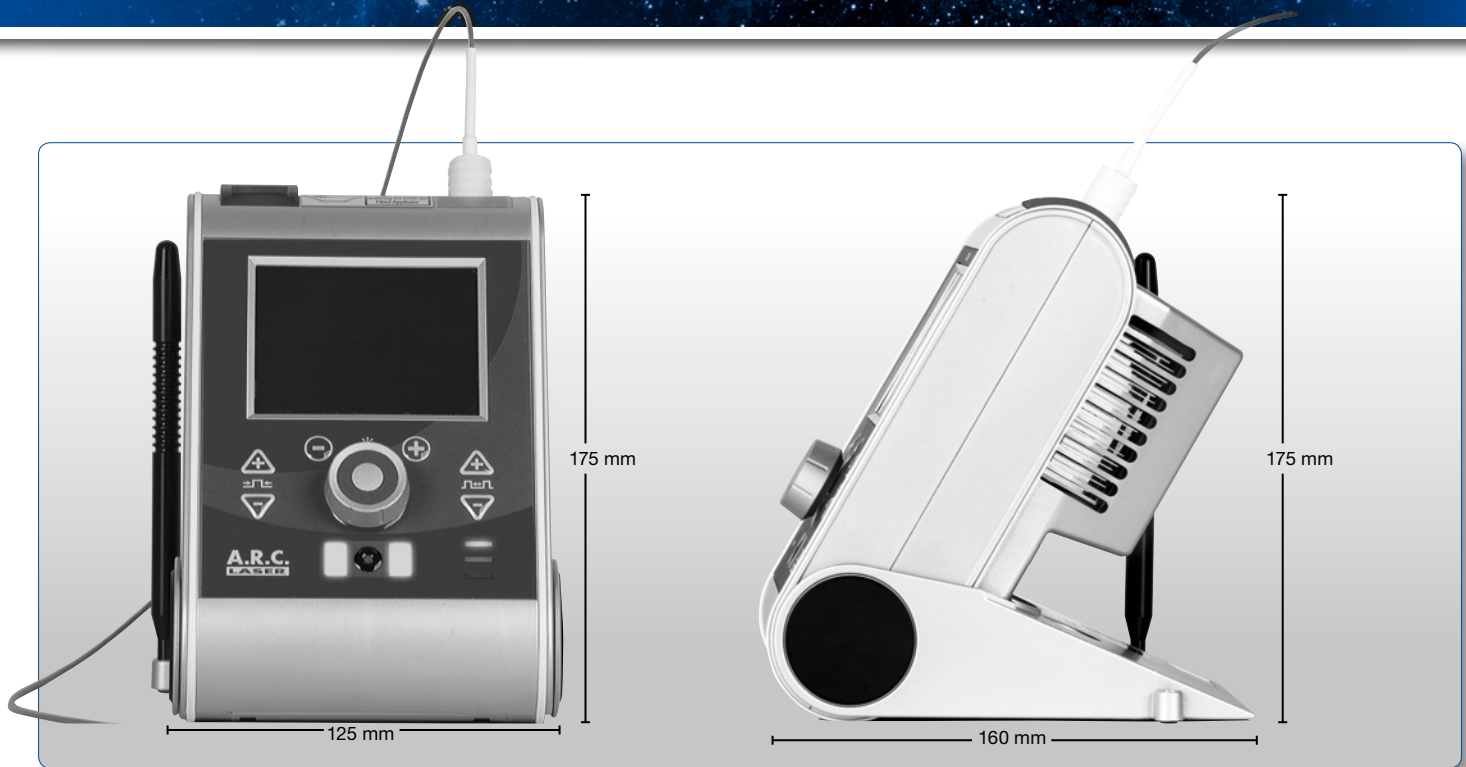
No matter which system you are going to work with: FOX, CLASSIC or ENDO, our hand pieces are easy to use with all those laser system. The patented fiber click-system allows full compatibility.



Laser Indirect Ophthalmoscope

Designed to attach to the FOX Endo 514 for retina specialists. The arrangement and positioning of all adjustment controls ensure intuitive functionality, for easy operation, adjustment and diagnostic capabilities. Lightweight and battery powered it is the ideal companion when treating patients such as certain retinopathy of prematurity infants.

BACK TO THE FUTURE



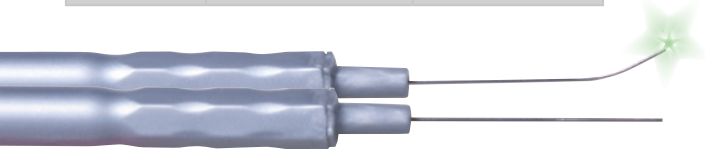
SINGLE USE ENDO PROBES

- Reliable power transmission
- Homogenous power distribution
- Single use

Ideal for the surgical use at diabetic retinopathy, retinal tear and retinal detachment. Our endo-probes – your safety.

ENDO-Probes single-use

23 G	straight	LL13006s
	curved 30°	LL13025s
	FLEX-Endo	LL11057s
25 G	straight	LL13010s
	curved 30°	LL13015s



THINK SMALL
REDUCE TO THE MOST NECESSARY
GO BATTERY POWERED
ADD MORE FREEDOM TO YOUR OR

SPECIFICATIONS

Laser	514 nm (Argon-green)
Output power*	1.5 Watt max.
Pulse length	1 ms to cw
Pulse interval	100 ms to 1,000 ms
Frequency	1 to 9 Hz
Aiming beam	635 nm, < 1 mW
Foot print (HWD)	175 x 125 x 160 mm
Weight	1.2 kg
Power supply	90 - 230 VAC / Battery powered
Fiber attachments	1 Endo-Fiber-Port
Accessories opt.	LiO / Endo Probes
<p>* at laser head. The device and the delivery system is protected by one or more patents. Technical data may change without notice.</p>	
<div> <div> </div> <div> </div> </div>	