

Marketing Information

Agrofarm 4 / 4E

Stage I / IIIA



New Agrofarm 4 Series Stage I Agrofarm 4E Series Stage IIIA

Agrofarm 4075 | 4090.4 | 4100.4 Stage I

Agrofarm 4065E | 4075E | 4085E | 4080.4E | 4090.4E | 4100.4E Stage IIIA

Treviglio, March 2024



Marketing Information

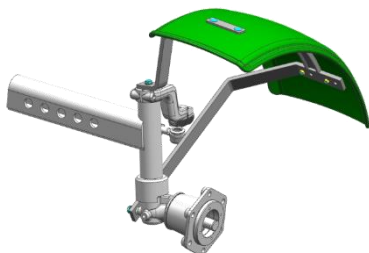
Agrofarm 4 / 4E
Stage I / IIIA

Tyres combination

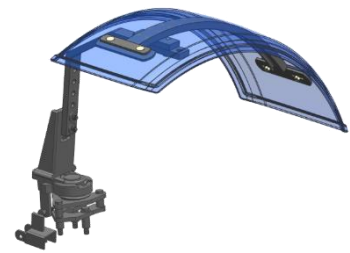
Code	Front tyre	Rear tyre	Stage I		Stage IIIA		
			4075	4090.4 4100.4	4065E	4075E 4085E	4080.4E 4090.4E 4100.4E
RF129	6.00 -16"	13.6 -28"	0	-	0	0	0
RF041	7.50 -16"	380/85 R28" (14.9 R28")	0	-	0	0	0
RF151	6.50 -16"	420/70 R24"	0	-	0	0	0
RF039	7.50 -16"	320/85 R36" (12.4 R36")	0	-	-	0	0
RF042	7.50 -16"	380/85 R30" (14.9 R30")	0	-	-	0	0
RF044	7.50 -16"	420/85 R30" (16.9 R30")	0	-	-	0	0
RF677	250/85 R20" (9.5 R20")	340/85 R28" (13.6 R28")	-	-	0	-	-
RF1199	280/70 R20"	420/70 R24"	0	0	0	0	0
RF502	280/85 R20" (11.2 R20")	380/85 R28" (14.9 R28")	0	0	0	0	0
RF597	300/70 R20"	420/70 R24"	0	0	0	0	0
RF1200	320/70 R24"	420/85 R30" (16.9 R30")	0	0	-	0	0
RF1202	280/85 R24" (11.2 R24")	12.4 -36"	0	0	-	0	0
RF510	320/85 R20" (12.4 R20")	380/85 R30" (14.9 R30")	0	0	-	0	0
RF1648	12.4 -24" R1W	16.9 -30" R2	0	0	0	0	0
RF1647	320/85 R24" (12.4 R24")	460/85 R30" (18.4 R30")	-	0	-	-	0

Front mudguards

Front mudguards
for 2 WD (WE004)



Front steering mudguards
for 4 WD (WE003)



NOTE



Marketing Information

Agrofarm 4 / 4E
Stage I / IIIA

Dimensions & Weight



4E Series		4065	4075 -4085	4080.4 - 4100.4
Wheelbase 2WD / 4WD (A)	[mm]	2.041 / 1.976		2.171 / 2.106
Length (B)	[mm]	3.860		3.990
Height (C) (center rear axle - roof with A/C)	[mm]	1.966		
Height (C1) (center rear axle - roof w/o A/C)	[mm]	1.907		
Height (center rear axle - ROPS)	[mm]	1.863		
Weight with cab (2WD / 4WD)	[Kg]	2.650 / 2.950	2.850 / 3.150	2.950 / 3.250
Weight with plat (2WD / 4WD)	[Kg]	2.500 / 2.800	2.700 / 3.000	2.800 / 3.100
Front Admissible Load 2WD / 4WD	[Kg]	1.100 / 2.200		
Rear Admissible Load 2WD / 4WD	[Kg]	2.700 / 3.000		
Total Admissible Load 2WD / 4WD	[Kg]	3.800 / 4.800		

NOTE



Marketing Information

Agrofarm 4 / 4E

Stage I / IIIA

Technical sheet

		4065	4075	4085	4080.4	4090.4	4100.4
ENGINE							
Type		1000 Series					
Emission level	Stage	IIIA	I / IIIA	IIIA	IIIA	I / IIIA	I / IIIA
Cyl. / Displ	n°/cc	3 / 3.000			4 / 4.000		
Bore / Stroke	mm	105 / 115,5					
Aspiration		Turbo					
Injection	Type	Direct					
Max. power Stage I	kW/Hp	-	51,5 / 70	-	-	64,1 / 87	69.3 / 94
Max torque Stage I	Nm	-	254	-	-	336	366
Max. power Stage IIIA	kW/Hp	45,6 / 62	53 / 72	60,3 / 82	58,8 / 80	62,5 / 85	70 / 95
Max torque Stage IIIA	Nm	232	265	310	325	348	373
Fuel tank	l	70					
TRANSMISSION							
Transmission	Type	SDF					
Gearbox	n°	5 gears x 3 ranges and splitter					
LS VERSION							
Shuttle	Type	Mechanical with lever under steering wheel					
N° of speed	n°	30 + 15					
PTO							
Mechanical engagement		●	●	●	●	●	●
540/540ECO/Groundspeed		●	●	●	●	●	●
LIFT							
Mechanical rear lift with EasyLift		●	●	●	●	●	●
Rear lifting capacity (STD)	Kg	2.500	3.500	3.500	3.500	3.500	3.500
HYDRAULICS							
Pump flow	l/min	42	42	42	42	42	42
Rear spool valves	n°	2	2	2	3	3	3

NOTE

- Standard
- Option
- Not available

Standard or Optional feature is related to WLD price list





**DEUTZ
FAHR**

DEUTZ-FAHR is a brand of  SDF

INCARCATOR FRONTAL

METAL-TECHNIK

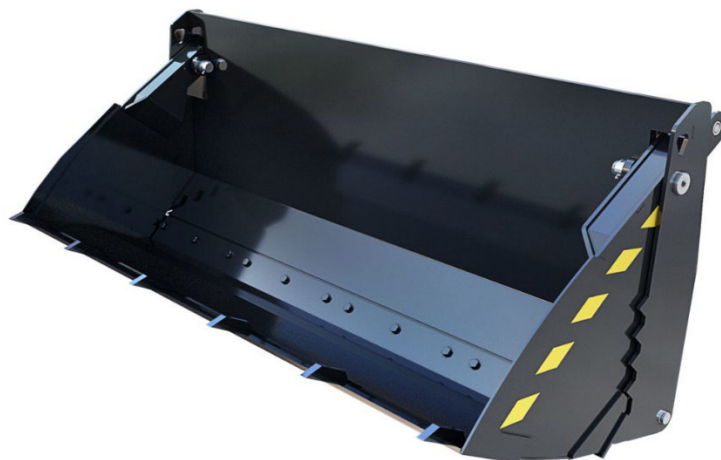


Parametrii tehnici:

INCARCATOR FRONTAL Metal Technik

Inaltime de ridicare	3430 mm
Greutate încărcător	460 kg
Capacitate de ridicare estimată	1.200 kg
Unghi de descărcare	43°
Unghi de aruncare	58°
Reglarea înălțimii de lucru	Hidraulică
Presiune de lucru	> 190 bar
Putere tractor	40-60 CP

CUPA MAXILAR 0.4m3 MTC Metals



Parametrii tehnici:

CAUS CU MAXILAR 0.4m3

VOLUMUL:	0.4m3
LUNGIME:	1040mm
LATIME:	2000mm
INALTIME:	850mm
GREUTATE:	340 kg
PUTERE NECESARA;	70/120cp

MLI

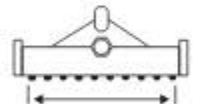
HEAVY LATERAL SHREDDER

Medium lateral shredder for tractors from 30 to 70 HP, available in sizes 140-160-180. Available with internal gearbox, which ensures greater operational stability.

The gearbox is integrated within the side plate, ensuring a compact and protected configuration. The internal gearbox system provides excellent horizontal and vertical outreach, allowing easy operation along road edges and medium-gradient slopes. Ideal for routine maintenance tasks requiring precision and ease of use.



30 ▶ 70 HP


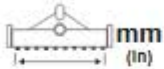
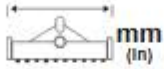

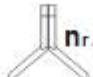
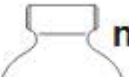




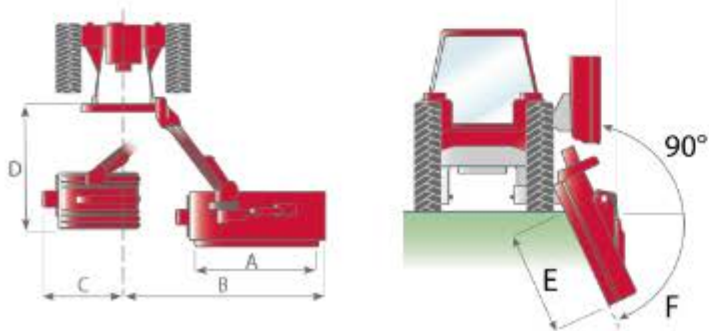
1400 ▶ 1800



TECHNICAL DATA MLI

Models and Features

MOD	 HP	 mm (in)	 mm (in)	 kg (lbs)	 nr. (0,34 kg)	 nr. (1,45 kg)	 nr.	 cat.
MLI 140	30 ▶ 70	1400 (55")	1550 (61")	470 (1036)	40	20	3 (XPB)	1/2
MLI 160	30 ▶ 70	1600 (62")	1750 (68")	490 (1080)	44	22	3 (XPB)	1/2
MLI 180	30 ▶ 70	1800 (71")	1950 (76")	515 (1135)	48	24	3 (XPB)	1/2



MOD	A mm(in)	B mm(in)	C mm (in)	D mm (in)	E mm (in)	F °
MLE 140	1410 (55")	2320 (91")	650 (26")	1540 (61")	1200 (47")	55
MLE 160	1560 (61")	2470 (97")	650 (26")	1540 (61")	1350 (53")	55
MLE 180	1860 (73")	2670 (105")	650 (26")	1540 (61")	1550 (61")	60

Mătură stradală MTC 1800

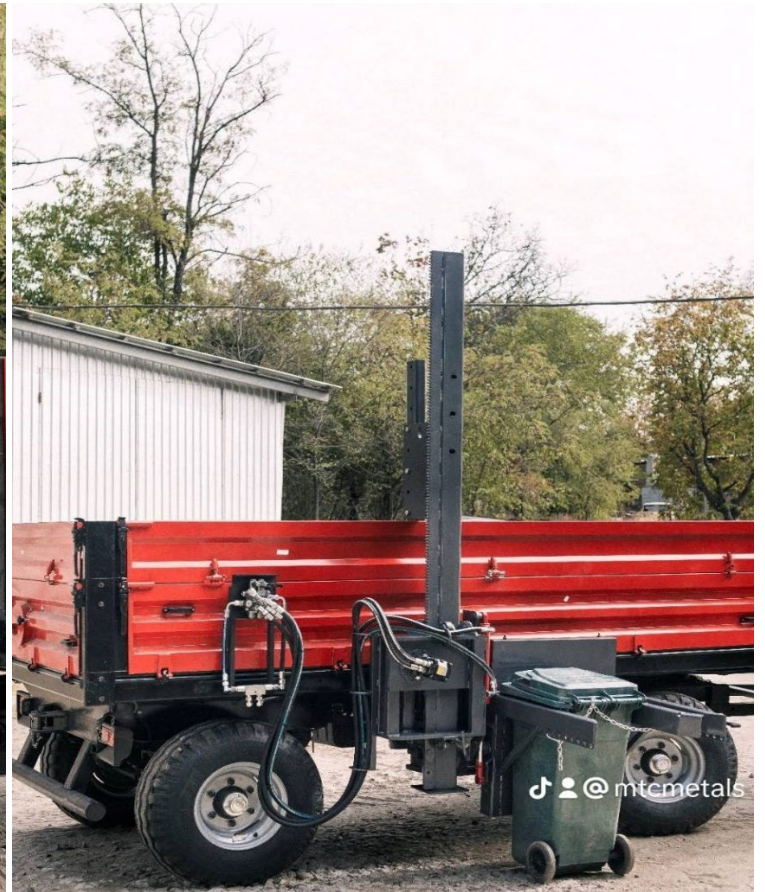


Parametrii tehnici:

Mătură stradală

Latime de lucru:	1800 mm
Inaltime:	800 mm
Greutate:	380 kg
Viteza de lucru:	8 km/ora
Agatare:	EURO
Putere tractor:	70/120 cp
Volum collector:	190 litri
Viteză de rotație a periei:	100 -130 rot/min

Dispozitiv de agățare tomberon



Parametrii tehnici:

Dispozitiv de gățare tomberon

LUNGIME:	3000 mm
LATIME:	600 mm
INALTIME:	3200 mm
GREUTATE:	400 kg
Sistem de functionare:	Hidraulic
PUTERE hidraulica:	160 bar
Latimea de agatare tomberon:	360-560 mm
Înălțimea de ridicare tomberon:	3300 mm
Capacitatea de încărcare:	500 kg

5 Tons



PRODUCT FEATURES AND OPTIONS



Capacity
7,6m³



Dimensions: 210x400x50
(Width x Length x Side Door)



Loading Capacity:
5 Tons



Extention:
: 30+30 cm or 40+40 cm



Tyre:
11.5 / 80-15.3

OPTIONS & DIFFERENCES ON THE COMPONENTS



Extra Extention Difference



Openable Side Doors Difference



Brand (Hammock) Differences



Air Brake Differences

Tomberon/Pubela120 L



Parametrii tehnici:

Tomberon din plastic cu capac si roti din cauciuc, 120 L

VOLUM:	120 L
DIMENSIUNI mm:	480 x 530 x 990 mm
DIAMETRU ROȚI:	200 mm
MATERIALUL PRODUS:	HDPE
CULOARE:	VERDE
DOTĂRI:	MÂNERE / ROȚI / AX ZINCAT