

OUTDOOR PHOTOMETRIC REPORT

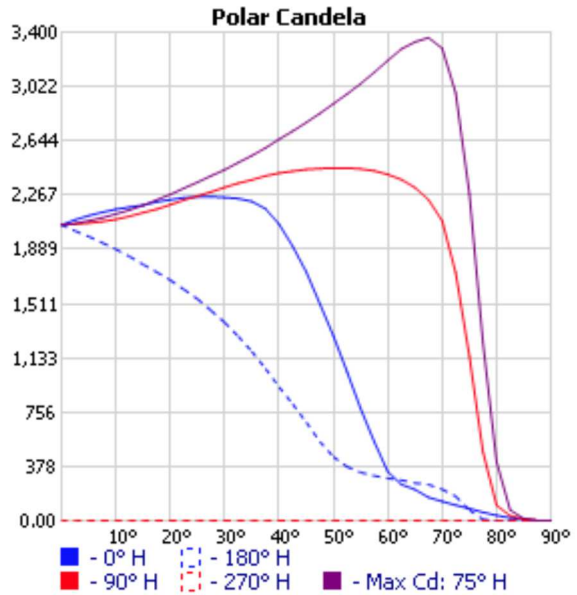
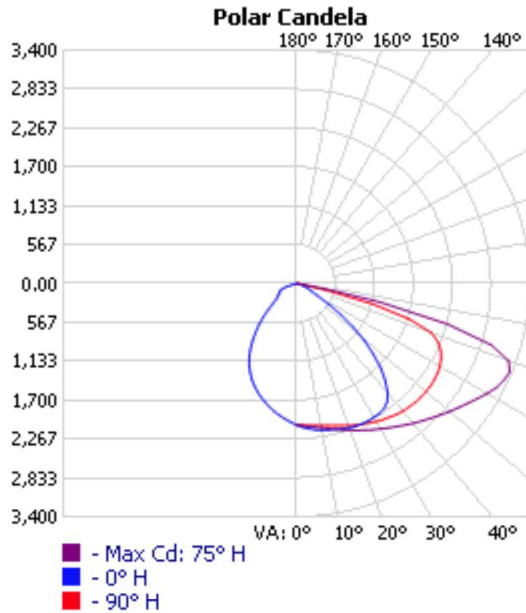
CATALOG: 130782.7L242.130.010



Manufacturer: LUG LIGHT FACTORY
 Test #: 13142
 Test Date: 20-03-2024
 Catalog: 130782.7L242.130.010
 Description: URBINO LED S ED D4i 7400lm/740 O13 gray II kl. mod. 010
 Lamp Catalog: LED 4000K
 Lamp Output: 1 lamp, rated Lumens/lamp: 7400
 Input Wattage: 50
 Luminous Opening: Rectangle (L: 0.18M, W: 0.15M)
 Max Cd: 3,362.9 at Horizontal: 75°, Vertical: 67.5°
 CUTOFF CLASS: Cutoff
 Roadway Class: MEDIUM, TYPE II
 Efficiency: 62.5%

No
Photo
Available

See report notes **



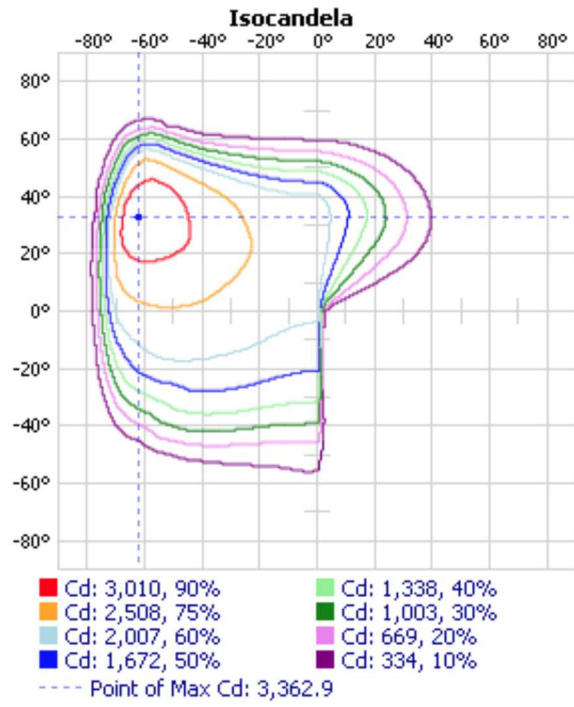
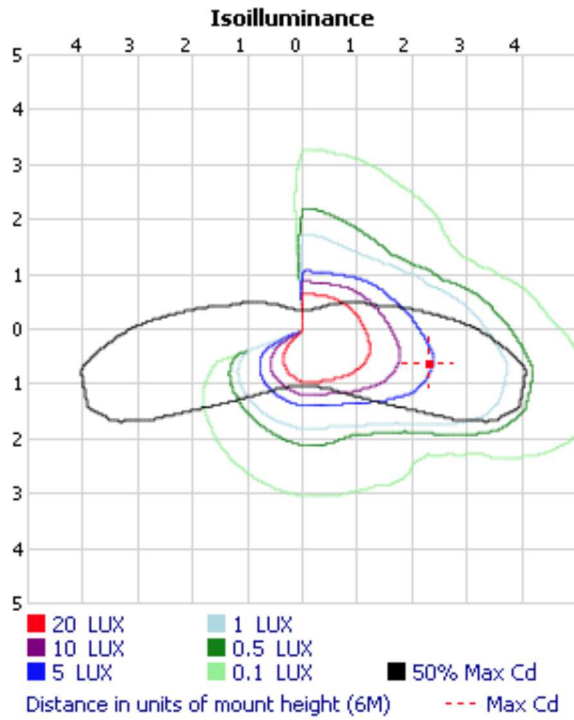
**File does not include sufficient vertical data to properly calculate BUG and LCS upright.
 **File does not include upper hemisphere data(90-180) and has Cd > 0 at 90° vertical.

Visual Photometric Tool 1.2.46 copyright 2024, Acuity Brands Lighting.

This Photometric report has been generated using methods recommended by the IESNA. Calculations are based on Photometric data provided by the manufacturer, and the accuracy of this photometric report is dependent on the accuracy of the data provided. End-user environment and application (including, but not limited to, voltage variation and dirt accumulation) can cause actual Photometric performance to differ from the performance calculated using the data provided by the manufacturer. This report is provided without warranty as to accuracy, completeness, reliability or otherwise. In no event will Acuity Brands Lighting be responsible for any loss resulting from any use of this report.



13142
VISUAL PHOTOMETRIC TOOL



Zonal Lumen Summary

Zone	Lumens	% Lamp	% Luminaire
0-30	1,097.5	14.8%	23.7%
0-40	1,902.5	25.7%	41.2%
0-60	3,655.2	49.4%	79.1%
60-90	966.9	13.1%	20.9%
0-90	4,622.0	62.5%	100%

Lumens Per Zone

Zone	Lumens	% Total
0-10	123.9	2.7%
10-20	368.8	8.0%
20-30	604.8	13.1%
30-40	805.0	17.4%
40-50	905.6	19.6%
50-60	847.2	18.3%
60-70	653.8	14.1%
70-80	298.8	6.5%
80-90	14.3	0.3%