

Table Top Autoclave Class B series

As a type of high pressure sterilizer, it takes steam as its sterilization medium which is fast, safe and economic. They are common used in medical health care institution or R&D institution to make the sterilization for wrapped or unwrapped instrument, fabric, utensils, culture medium, unsealed liquid, etc.



Features:

* Brand-new operation interface

The LCD touch screen can display temperature, pressure, time, operating status, error and alarm information, etc.

There are different color changes in each stage of sterilization.

It is convenient for users to observe the sterilizer running status.

More importantly, the fault alarm not only displays the fault code, but also automatically displays the reason analysis and solution.

* Multiple safety protection devices

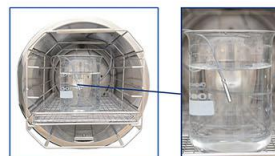
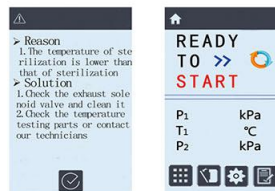
Automatic over-temperature protection device, multiple control and protection of evaporator, door safety interlock protection, double over-pressure protection device, etc.

* Mobile temperature sensor

The mobile temperature probe can directly detect the internal temperature of the liquid to ensure the sterilization effect of the liquid.

* Automatic door structure

Sterilizer adopts automatic door structure, which is fast and convenient to operate, effectively protects human body and prevents scalding.



* Vacuuming system

High efficiency vacuum extraction system, low working noise, over -90KPa extreme vacuum, fast extraction speed, good dryness, more complete sterilization

* A variety of programs

There are exposed procedures, packaging procedures, rubber procedures, dressing procedures, liquid procedures, liquid customization, solid customization, medium sterilization procedures, B&D testing, vacuum testing and media dissolution procedures.



* Other features

A. Heating, sterilizing, exhausting and drying totally automatic.

B. Chamber is heated by film heater, saving energy and time.

C. 0.22μm high efficiency air filter, to avoid re-contamination of sterilized materials with filtration efficiency over 99.5%.

D. Water filter in tank and chamber are quick to disassemble and easy for cleaning.

E. Built-in stainless steel water tank, inner cycle of steam and water.

F. Standard built-in printer.

G. Standard USB port.

Technical Parameters:

Model	BKM-Z45B	BKM-Z60B	BKM-Z80B
Capacity	45L	60L	80L
Chamber Size(mm)	φ316*621	φ386*520	φ386*692
Design Pressure	-0.1/0.3MPa		
Sterilization Temperature	105℃~134℃		
Chamber Material	SUS304		
Ambient Temp.	5℃~40℃		
Consumption	5.8KW	6.2KW	
Power Supply	AC220V, 50Hz(Standard); AC110/220V, 60Hz(Optional); Wiring Method: Air switch		
External Size(W*D*H)mm	610*1020*610	805*940*700	805*1140*700
Package Size(W*D*H)mm	750*1200*880	960*1130*940	960*1330*940
Gross Weight(kg)	165	215	230

Note: It is applicable to the altitude below 3500 meters, and the parts need to be changed when the altitude is over 2000 meters.

Manual Wheelchair



SYIV100-MFL808B-12



SYIV100-MFL808B-16



SYIV100-MFL808B-20-B



SYIV100-MFL808B-20

Introduction:

Wheelchair is an important mobile tool for home rehabilitation, turnover transportation, medical treatment, and outing activities for the wounded, sick, and disabled. It not only satisfies the mobility of the physically disabled and people with mobility impairments, but more importantly, it is convenient for family members to move and take care of patients. Allow patients to use wheelchairs to exercise and participate in social activities.

Features:

- The tires are non-pneumatic tires with strong shock resistance and cushioning ability.
- * The frame adopts high-strength aluminum alloy structure, which is wear-resistant, corrosion-resistant and light in weight.
- * The seat cushion is made of honeycomb breathable material, which has better moisture absorption and air permeability, making the patient more comfortable.
- * The product can be folded-the backrest can be folded, the seat cushion can be detached, and the foot pedal can be opened and closed, making the operation more light and flexible.
- * Double brake and special seat belt design.

Technical Parameters:

Model	SYIV100-MFL808B-12 SYIV100-MFL808B-16 SYIV100-MFL808B-20-B SYIV100-MFL808B-20			
Instrument Size (W*D*H)	930*625*920mm			
Folded Width	320mm			
Backrest Height	445mm			
Front Wheel Diameter	6 inches			
Rear Wheel Diameter	12 inches	16 inches	20 inches	
Loading Capacity	100kg			
Package Size(W*D*H)	700*300*710mm			
Net Weight	11.5kg			11kg
Gross Weight	12kg	12kg	13.5kg	12.5kg

Electric Wheelchair



Features:

- * Aluminum alloy frame, light and easy to fold, light and easy to carry.
- * The intelligent universal remote control is easy to operate, and the electromagnetic brake stops when you release it, which is safe and reliable.
- * The motor is powerful, the wheels are damped, and all kinds of roads can move forward without hindrance.
- * The battery can be customized.

Technical Parameters:

Model	MFW880L
Front Wheel Diameter	200mm
Rear Wheel Diameter	310mm
Safe Load	100kg
Max Speed	6km/h
Loading Capacity	100kg
Instrument Size	1000*610*940mm
Package Size(W*D*H)	695*450*905mm
Net weight	28kg
Gross Weight	31kg

Tissue Flotation Water Bath



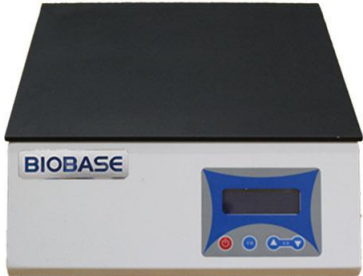
Features:

- * High-brightness LCD display, real-time display of temperature.
- * Highly sensitive temperature control integrated unit, high precision and reliable performance.
- * With over-temperature alarm function
- * Using new heating materials, heating fast, uniform heating, low thermal inertia, energy saving and reliable.
- * With memory function. The set temperature is automatically retained.
- * The work surface is sprayed for corrosion resistance.

Technical Parameters:

Model	BT-I
Temp. Range	RT to 90℃
Temp. Precision	1℃
Over-Temp. Alarm Range	1~5℃
Environmental Temp. Range	0~40℃
Bath Tank Size(W*D*H)	240*180*55mm
Display	LCD
Power Supply	AC220V±10%, 50/60Hz; AC110V±10%, 60Hz
Consumption	200W
External Size(W*D*H)	345*340*130mm
Package Size(W*D*H)	440*440*220mm
Gross Weight	5kg

Slide Dryer (Hot Plate)



Features:

- * High-brightness LCD display, real-time display of temperature.
- * Highly sensitive temperature control integrated unit, high precision and reliable performance.
- * With over-temperature alarm function
- * Using new heating materials, heating fast, uniform heating, low thermal inertia, energy saving and reliable.
- * With memory function. The set temperature is automatically retained.
- * The work surface is sprayed for corrosion resistance.

Technical Parameters:

Model	BH-I
Temp. Range	RT to 90℃
Temp. Precision	1℃
Environmental Temp. Range	0~40℃
Over-Temp. Alarm Range	1~5℃
Drying Area	345*260mm
Display	LCD
Power Supply	AC220V±10%, 50/60Hz; AC110V±10%, 60Hz
Consumption	200W
External Size(W*D*H)	345*340*130mm
Package Size(W*D*H)	440*440*220mm
Gross Weight	5kg

Blood Bag Tube Sealer

Application:

The blood bag tube sealer is a compact equipment to seal the blood bags, infusion bags, urine bags by high frequency sealing system. It's widely used in blood-bank, hospital, biological industry, etc.

Features:

- * No hemolysis.
- * With suction feet to avoid moving, can be used in blood collecting vehicle.

Technical Parameters:

Model	BK-BTS1
Sealing time	2~4s
Sealing type	Automatic
Diameter of tube	Ø2-6mm (tube wall thickness≤1.5mm)
Power Supply	AC110V~260V, 0.7A
Consumption	150W
External Size (W*D*H)	320*180*130mm
Package Size (W*D*H)	430*235*235mm
Net/Gross Weight	7kg



Blood Plasma Extractor

Application:

Plasma Extractor is designed to extract blood component from centrifuged bags. It is widely used in hospital, blood station, etc. After the plasma layering, different components of blood can be extruded from top to bottom by the pressure of plasma-separating clip.

Features:

- * Manual system.
- * Easy to observe the separation of the plasma and red blood cells.

Technical Parameters:

Model	BPE-I
Clamping Force	≥20N
Applicable Blood Bag	100ml~400ml
Material	Stainless Steel
External Size(W*D*H)	165*250*250mm
Package Size(W*D* H)	310*310*240mm
Net Weight	2.5kg
Gross Weight	3kg



Blood Thaw Machine

Application:

The blood thawing machine is a plasma thawing equipment suitable for hospitals and blood stations. It can also be used for rewarming platelets, blood cells, medical frozen products, anesthetics and medicines.

Features:

- * Intelligent management, real-time display of temperature and time curve;
- * High-definition display, high resolution, sensitive operation.
- * Traceability system: real-time record temperature data, save operation records.
- * A variety of thawing modes are optional.
- * With temperature control and sensing system to achieve higher temperature control accuracy.



Scanning bar code (Optional)



Swing type



Basic type



Isolated water type

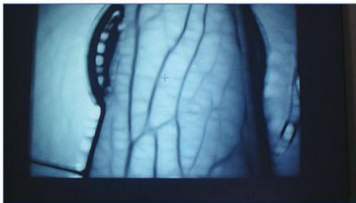
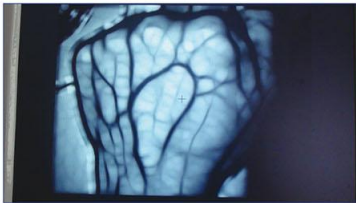
Technical Parameters:

Model	SCR-100	SCR-50	SCR-90
Blood Bags (50-200ml)	Max.6 pcs	Max.12 pcs	Max.24 pcs
Water Storage	20 Kg±5%	58 Kg±5%	98 Kg±5%
Thaw type	Standard:Basic type	Standard:Basic type Optional:Swing type and isolated water type	
Temp. Range	Rt~50℃	Rt~60℃	
Temp. Accuracy	±0.2℃	±0.1℃	
Thawing Time	10~15min	Basic type: 10~15min; Swing type: 8~10min; Isolated water type: ≤15min	
Consumption	1kW	2KW	3.6KW
Power Supply	AC220V±10%, 50/60Hz		
External Size (W*D*H)	550*500*475mm	600*540*970mm	720*600*990mm
Package Size (W*D*H)	580*580*520mm	640*600*1020mm	756*665*1020mm
Gross Weight	30kg	65kg	93kg

Vein Finder

Application:

It is suitable for neonatology department, pediatrics department, internal medicine, obstetrics, gynecology, rehabilitation, acupuncture, emergency room, operating room, oncology, laboratory, injection department, ICU, PICU/NICU etc. Any department which needs venipuncture can use vein imaging device.



Features:

- * With narrow band infrared light source, no damage to human body, no radiation, no heat, no harm to eyes;
- * The 3 million pixels camera, can display the magnified image clearly and provide reference for the accurate puncture;
- * With two road top and bottom light source: bottom light source adopts the German original high-power LED solid-state light source, strong penetrability; top light source is multipoint LED, no shadow, no reflected light interference, suitable for observing the superficial blood vessels;
- * Both of the light sources are stepless adjustable;
- * The industrial grade camera and display provide best imaging.



BKVD-1202E



BKVD-1202L

Technical Parameters:

Model	BKVD-1201E	BKVD-1202L
Wavelength Range	760~940nm	
Light Source Intensity	Stepless adjustable	
Camera Resolution	5 mega-pixel	8 mega-pixel
Camera Illuminance	0.01 Lux	
Camera Arm	Scalable and collapsible	
Lens	High sensitivity infrared lens, 7-22 zoom	
Display	6.5" LCD	8.4" LCD
Display Resolution	800x600	
LCD Contrast	700:1	
Screen	180 ° folding, 360° Rotory	
Venous depth	Venous depth Remind	
Power Supply	AC110/220V±10%, 50/60 Hz	
Package Size(L*W*H)	600*450*450mm	
Gross Weight	13kg	14kg

Digital Biological Microscope

Features:

- * The integration of structure design, to save space.
- * Valid mouldproof design, it can be used under the high temperature and high humidity environment.



Technical Parameters:

Model		DM-125	DM-300M
Optical System	Infinite Optical System	/	√
	Finite Optical System	√	/
Viewing Head	Seidentopf Binocular Viewing Head Inclined at 30°, Interpupillary 47-78mm	√	/
	Seidentopf Trinocular Viewing Head Inclined at 30°, Interpupillary 47-78mm	●	/
	Seidentopf Binocular Viewing Head, 30° Inclined, Interpupillary 48-75mm	/	√
	Seidentopf Trinocular Viewing Head, 30° Inclined, Interpupillary 48-75mm	/	●
	MD101 Microscope Camera with HD Monitor, 5M pixels, Colour CMOS	●	●
Eyepiece	Wide Field Eyepiece WF 10×/18	√	√
	Extra Wide Field Eyepiece EW10×/20 with Diopter Adjustment	/	●
Objective	Achromatic Objective 4×, 10×, 40×, 100×	√	/
	Infinite Semi-plan Achromatic Objectives 4×, 10×, 40×, 100×	/	√
	Infinite Plan Achromatic Objectives 4×, 10×, 40×, 100×	/	●
Nosepiece	Backward Quadruple Nosepiece	√	/
	Quadruple Nosepiece	/	√
Stage	Double Layers Mechanical Stage 140mm×140mm/ 75mm×50mm	√	√
	NA1.25 Abbe Condenser	√	/
Condenser	Sliding-in Centerable condenser NA1.25	/	√
	Dark Field Condenser (Dry, Oil)	●	/
	Coaxial Coarse and Fine Adjustment, Fine Division 0.002mm, Coarse Stroke 37.7mm per Rotation, Fine Stroke 0.2mm per Rotation, Moving Range 20mm	/	√
Focusing System	Coaxial Coarse and Fine Adjustment, Fine Division 0.002mm, Moving Range 25mm	√	/
	6V/ 20W Halogen Lamp, Brightness Adjustable	●	●
Illumination	S-LED Illumination, Brightness Adjustable	√	√
	Phase Contrast Kit, Fluorescent Attachment, Polarization Set	●	●
Power Supply	AC 110~220V, 50/60HZ	√	√
Packing Size(mm)	380*270*470mm (DM-125 Main body) 350*350*640(DM-300M)	√	√
Gross Weight(kg)	8.5(DM-125 Main body); 12(DM-300M)	√	√

Note: √ Standard Outfit, ● Optional, / Without this feature Trinocular microscope can be installed camera and screen.

Build-in Camera Biological Microscope



Technical Parameters:

Model				BMB-117M	BMB-300M
Viewing Head	Compensation Free Binocular Head, Inclined at 30°, Interpupillary Distance 48-75mm			√	√
	Camera System	Valid Pixel	1280*1024(1.3M Pixel)	√	/
			1600*1200(2.0M Pixel)	●	/
			2048*1036(3.0M Pixel)	/	√
			2052*1944(5.0M Pixel)	/	●
		Output Mode	USB2.0	√	√
		Operation System	WINDOWS7/8 2000 / XP/ VISTA	√	√
Software	ScopelImage 9.0	√	√		
Range of Viewing Field	>90%(BMB-117M); 18mm(BMB-300M)			√	√
Eyepiece	WF10×/18			√	√
	P16×/11			●	/
Objective	Extra wide filed eyepiece EW10×/20 with diopter adjustment			/	●
	Achromatic Objective 4×, 10×, 40×, 100×			√	/
	Infinite plan Achromatic Objective 4×, 10×, 40×, 100×			/	√
	Infinite Plan Achromatic Phase Objective 10×,20×,40×,100×			/	●
Nosepiece	Oil Darkfield Objective with Iris Diaphragm 100×(NA0.36-1.25)			/	●
	Backward Quadruple Nosepiece			√	/
	Quintuple Nosepiece			/	●
Stage	Quadruple Nosepiece			/	√
	Double Layers Mechanical Stage 140*140mm, Moving range 75*50mm			√	√
Condenser	Abbe NA1.20 with Iris Diaphragm & Filter			√	/
	Swing Condenser N.A.0.9/0.25			/	√
	Turret Phase Contrast Condenser			/	●
	Dark Field Condenser (Dry)			/	●
Focusing	Dark Field Condenser (Oil)			/	●
	Coaxial Coarse & Fine Adjustment System, Range 24mm, Fine Division 0.004mm			√	/
	Coaxial Coarse & Fine Adjustment System, Range 20mm			/	√
Illumination	LED 3W, Brightness Adjustable			√	/
	Halogen Lamp 6V/20W, Brightness Adjustable			●	/
Power Supply	S-LED Powerful Illumination			/	√
	AC 110~220V, 50/60HZ			√	√
Accessories	Phase Contrast Kit			●	●
	Dark-Field Attachment			●	●
	Polarization Attachment			●	●
Package Size	396*262*492(BMB-117M), 334X334X533(BMB-300M)			√	√
Gross Weight	7.5kg (BMB-117M), 12.5kg (BMB-300M)			√	√

Note: √ Standard Outfit, ● Optional, / Without this feature