

moviplan 800 TA

Radiographic bucky table with column and motorized elevator

Product Data

Movements

Longitudinal table-top	Manual (floating), 870 mm (435 mm head side, 435 mm feet side)
Transversal table-top	Manual (floating), 230 mm (± 115 mm)
Vertical table-top	Motorized elevator with pedal command Run-length 330 mm
Longitudinal column	Manual, 1710 mm (Optional 1 m extension rail)
Tube arm vertical movement	Balanced manual, movement force <40N Run-length 1470 mm
Tube arm transversal movement	Manual, movement force < 40N. Run-length 190 mm
Column rotation around its axis	Manual, $\pm 90^\circ$
Tube-arm rotation	Manual, $\pm 180^\circ$
SID – Source to Image distance	405 ÷ 1565 mm (might change depending on tube type)
Focus to Floor distance	430 ÷ 1900 mm (might change depending on tube type)

Table top

Length	2180 mm
Width	750 mm
Height from ground	460 ÷ 790 mm
Max patient weight	Maximum patient weight: 200 kg Limit for elevator movement: 185 kg
Surface	Flat
Material	Plastic laminate (standard) Carbon fiber (option)
Filtration	Plastic laminate: <0.9 mm Al eq. @ 100 kVp, HVL = 2.7 mm Al Carbon fiber: ≤ 0.4 mm Al eq. @ 100 kVp, HVL = 2.7 mm Al



Potter bucky

Cassettes size	13x18 cm to 35x43 cm (up to 43x43 cm for portable digital detectors)
Longitudinal movement	Manual, locking by electromagnetic brake. Run-length 540 mm
Cassette centering	Semi-automatic
AEC measuring chamber	Predisposed for 3 fields measuring chamber
Skin to film distance	79 mm
Standard grid (other models on request)	Vibrating Ratio: 10:1 Focalization: 120 cm Lines/cm: 34

Collimator

Type	Manual with internal light source
Limitation	Square and rectangular with light marker for bucky centering
Light source	Halogen bulb with timer 24 V, 100 W
SID measurement	With retractable tape measure
Field coverage	43x43 cm @ SID=100 cm
Inherent filtration	≥ 0.5 mm Al eq. @ 100 kVp, HVL = 2.7 mm Al
Leakage radiation	≤ 45 mR/hr @ 150 kVp, 350 W

Functions

Predisposition for x-ray tube	Any type with weight up to 30 kg
Position of controls	Keyboard on tube arm
Table top movement unlocking	With light-barrier
Movement locking	With electromagnetic brakes
Projections	Perpendicular on potter; oblique on potter; lateral (with optional accessories); off-table; on chest stand (optional)

Accessories

1 handle	Standard
Gynecological legs support	Option
Compression band	Option
Lateral cassette support	Option
1 m extension rail	Option



Electrical features

Standard power supply voltage	Single phase 230 Vac \pm 10%
Frequency	50-60 Hz
Absorbed current	2.3 A
Absorbed power	580 VA
Equipment type and classification according to IEC 60601-1	Class I with type B applied parts
Degree of protection according to IEC 60529	IP00
Operating mode	Continuous

Mechanical features

Table weight	180 kg
Tube-stand column weight	290 kg
Column installation	Floor mounted rails (no wall or ceiling attachment necessary)

Environmental conditions

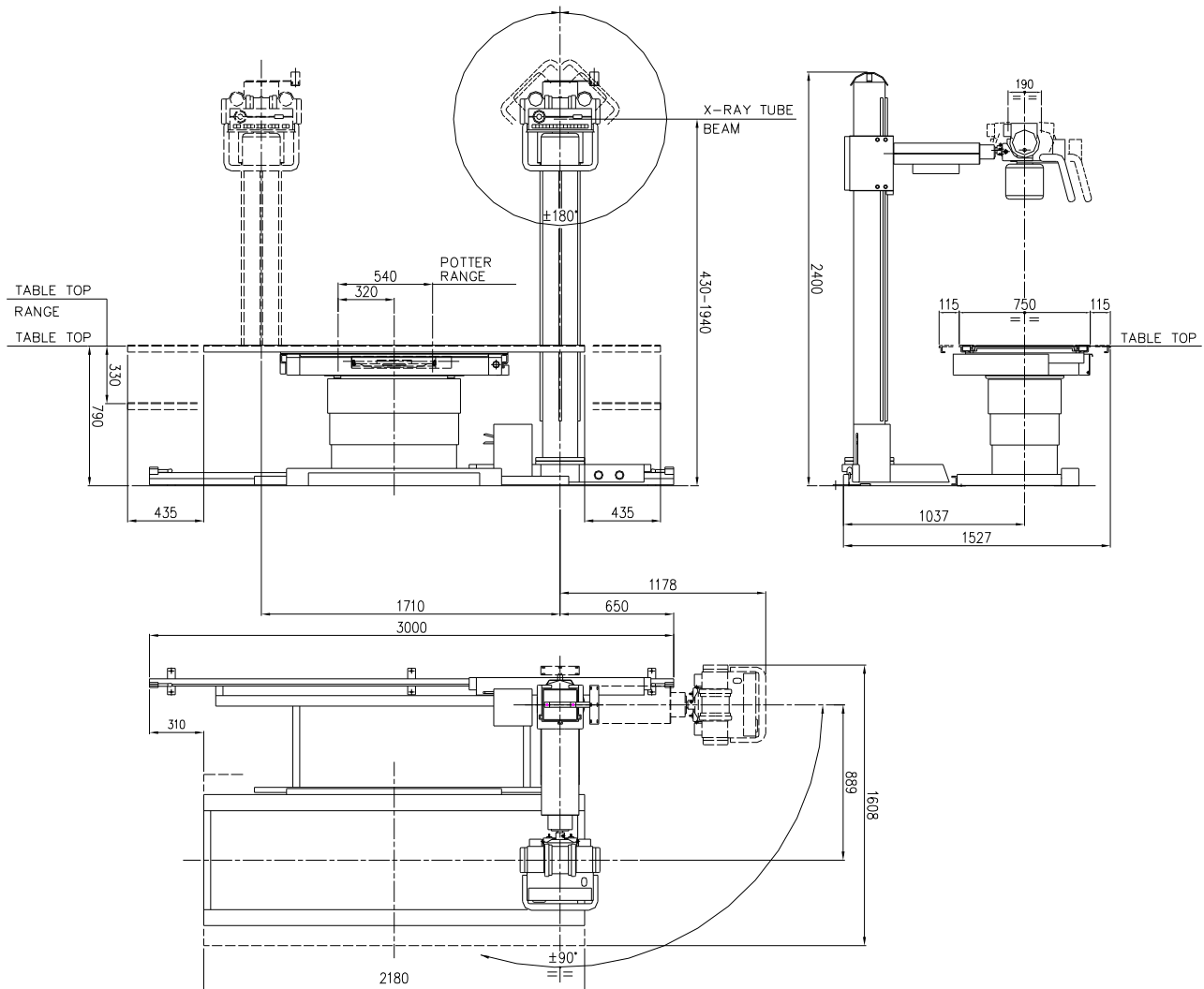
Operating conditions	Temperature: +10° to +40° Celsius Humidity: 30% to 75% Pressure: 700 hPa to 1060 hPa
Conditions for transport and storage	Temperature: -20° to +70° Celsius Humidity: up to 95 % non condensing Pressure: >630 hPa

Standards and regulation

	CE symbol grants the product compliance to the European Directive for Medical Devices 93/42/EEC and its revised versions
---	--



Dimensions (all quotes in mm)



Note: Products are continuously under review in the light of technical advancement. The actual specification may therefore be subject to improvement or modification without notice.

VILLA SISTEMI MEDICALI s.p.a.
20090 BUCCINASCO (MI) – ITALY,
Via delle Azalee, 3
Tel. +39-02-488591, Fax +39-02-4881844

Company with Quality System certified by



ISO 9001:2015



ISO 13485:2016