

# medbar®

## Cardboard Camera Cover



**REF** 202-01



**CE** 2292

**STERILE EO**



## Cardboard Camera Cover

### Intended Use

Camera Cover is used for isolating nonsterile surgery camera cables which is taken into the sterile area during the surgical procedures and kept in. Especially in endoscopic, arthroscopic and etc. surgeries, the probe cable which cannot be sterilized is passed through the sterile camera cover thus contamination risk from cables to the media and patient is removed. At the same time the device protects the cables from liquids dispersed into the media during the process. The cable of the camera is passed through the Camera Cover easily. The cover is kept stationary by linking to a cable or a probe with a strip which is on the cover.

### Components of The Product

Medbar brand Cardboard Video Camera Cover (202 01) consists of 3 parts:

- Cardboard,
- Cover and
- Adhesive tape.

### Product Features

- Centralized hanger hall.
- Telescopically folded.
- Single layer thickness is 40 micron.
- Eight layer folding allows the cover to pass over the camera easier and faster.
- Compatible with all endoscopic cameras.
- Different sizes available.



### Quality

- CE marked according to 93/42/EEC Medical Device Directive and classified as Class I sterile medical device.
- Manufactured under ISO 13485 Quality Management System standard.
- Notified Body: UDEM LTD A.Ş. (2292)
- EC Certification No: M.2016.106.7000
- GMDN Code: 37450

### Biocompatibility

- Biologic evaluation of Cardboard Camera Cover done according to ISO 10993-1.
- Manufactured under ISO 13485 Quality Management System standard.
- The products do not incorporate a substance of a human blood derivative, animal originated tissues, phthalates, medicinal product, radioactive materials and electromagnetic waves.

### Sterilization

- Sterilized with Ethylene Oxide. Validated for ISO 11135 standard.

### Shelf Life

5 years.

REF NO	PRODUCT NAME	STERILIZATION	PACKAGING UNIT
202-15	Cardboard Camera Cover 14x140 cm	EO	50 pcs inner box
202-01	Cardboard Camera Cover 14x250 cm	EO	400 pcs outerbox
202-25	Cardboard Camera Cover 14x300 cm	EO	Box Dimensions:
202-16	Cardboard Camera Cover 18x300 cm	EO	38*47*43 cm
202-17	Cardboard Camera Cover 18x250 cm	EO	

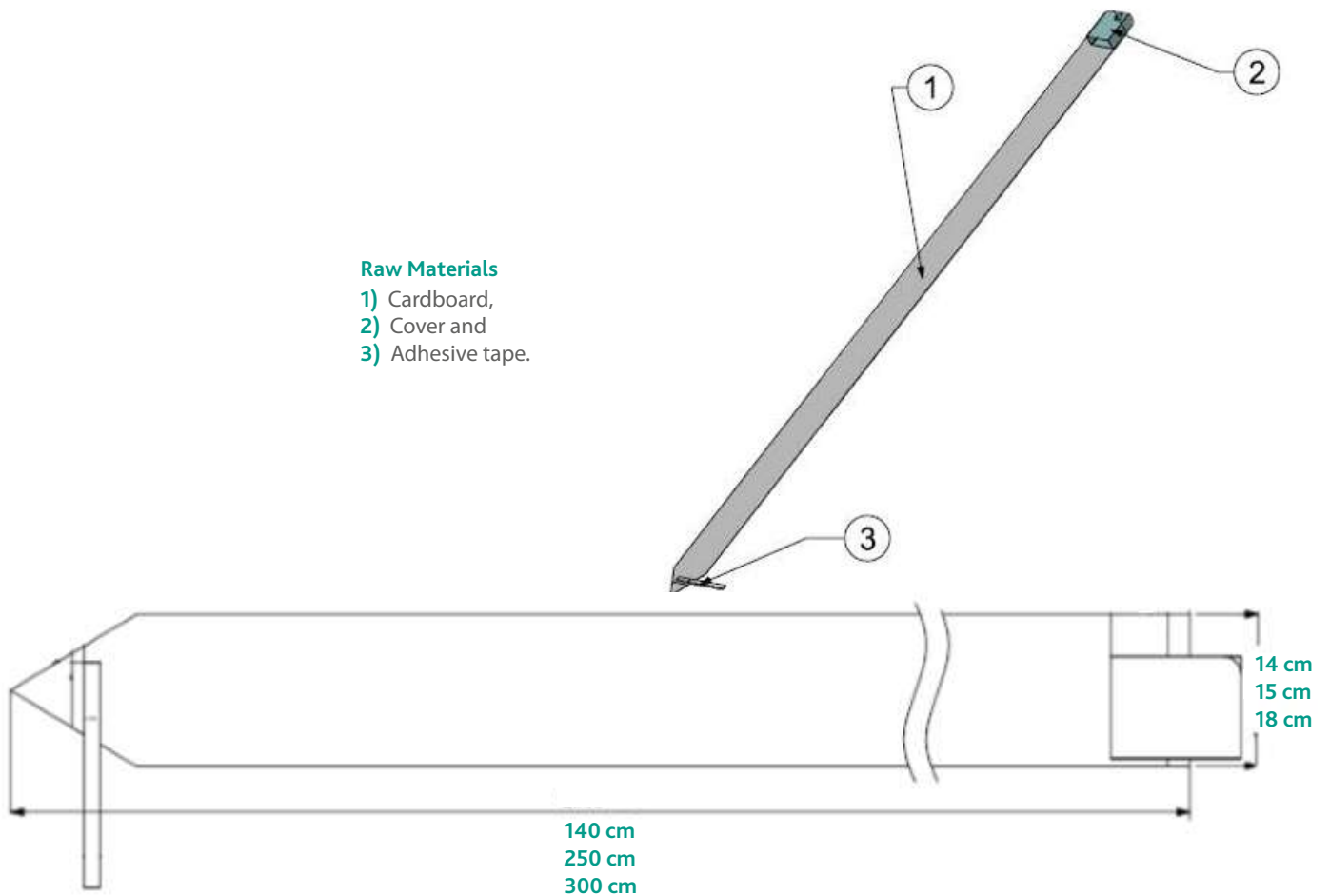
## Cardboard Camera Cover

## Technical Drawing

## Cardboard Camera Cover

## Raw Materials

- 1) Cardboard,
- 2) Cover and
- 3) Adhesive tape.



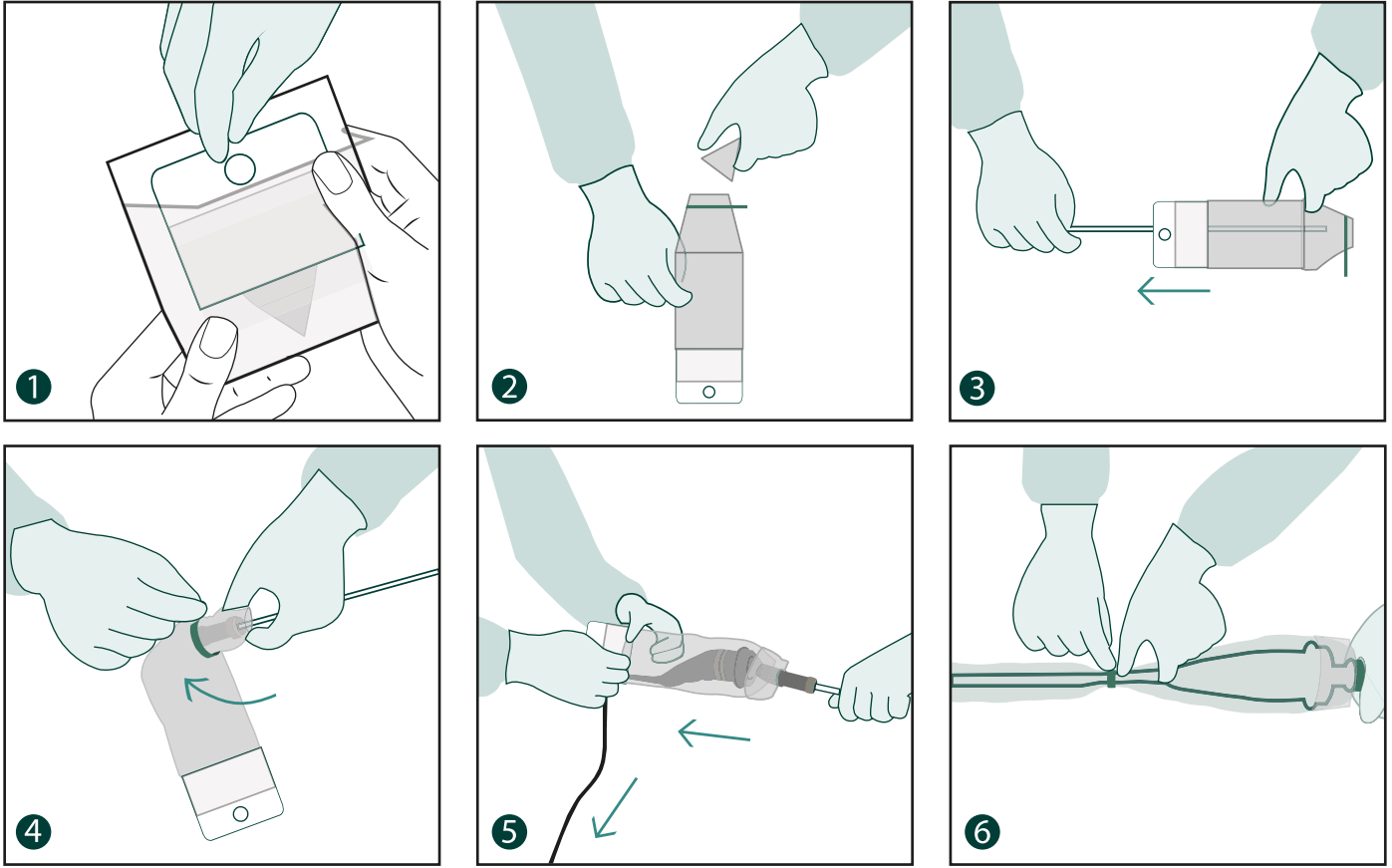
## Manufacturing Method

Main manufacturing processes for Cardboard Camera Cover are consists of

- Nylon production,
- Cutting-stickking,
- Folding,
- Packaging,
- Parcelling and
- EO sterilization.

## Cardboard Camera Cover

## Instructions For Use



- 1 Peel up individual pouch and remove the cover from it.
- 2 Insert endoscope through rigid applicator of folded drape and triangle cut tip up to its camera connector side.
- 3 Wrap the portion of drape that covers camera connector side of endoscope with adhesive tape pre-attached to the triangle cut tip of a film.
- 4 Partially remove endoscope out and connect camera device to the endoscope.
- 5 Make assistant to pull and apply protective cover onto the remaining cabling of a camera device.
- 6 In case if there is an extra adhesive tape, wrap around the portion of drape where cabling connects to the camera device.



# medbar®

## Microscope Drapes



REF 204



CE 2292

STERILE EO



## Microscope Drape

### Intended Use

- Nowadays lots of surgery is made by surgical microscopes. During these procedures the risk of contamination from microscope to patient with open wound and to the media is high. Microscope cover is used for isolating nonsterile surgery microscopes which is taken into the sterile area during the surgical procedures and kept in. Microscope cover's centre is placed on the microscope's objective and its special ends are placed on the binocular. The cover is fixed to the microscope via stickers and belts on the cover.

### Components of Product

Medbar Brand Microscope Drape consists of:

- Microscope cover film,
- A lens,
- A Lens center,
- 6 double-sided tape(small)
- A small blue arrow sticker,
- A small blue right hand sticker,
- A small blue left hand sticker,
- 3 tear here sticker,
- 3 green belt,
- A double-sided tape (larger).

In some models (204-01, 204-03, 204-05) there are

- Inner and Outer ring parts around the lens centre.
- Microscope cover (204-04) only consists of cover.



### Product Features

- Specially folded for easy application.
- Super transparent lens system.
- Adhesive straps secure the drape safely in place.
- Accessories are easy to use when the drape is in place.
- Compatible with Carl Zeiss, Leica and Moller-Wedel operating microscope models.
- More than 50 different sizes available.
  - Customized sizes are available upon request.

### Quality

- CE marked according to 93/42/EEC Medical Device Directive and classified as class I sterile medical device.
- Manufactured under ISO 13485 Quality Management System standard.
- Notified Body: UDEM Ltd. Şti. (2292)
- EC Certification No: M.2016.106.7000
- GMDN Code: 12535

### Sterilization

- Sterilized with Ethylene Oxide.
- Validated for ISO 11135 standard.

### Biocompatibility

- Biologic evaluation of Microscope Drape is done according to ISO 10993-1.
- The products do not incorporate a substance of a human blood derivative, animal originated tissues, phthalates, medicinal product, radioactive materials and electromagnetic waves.
- Latex-free.

### Shelf Life

- 5 years.

### Manufacturing Methos

Main manufacturing processes for Microscope Drape are consists of

- Nylon production,
- Injection
- Assemble,
- Cutting-Sticking,
- Folding,
- Packaging,
- Parcelling and
- EO sterilization.

### Compatible Devices

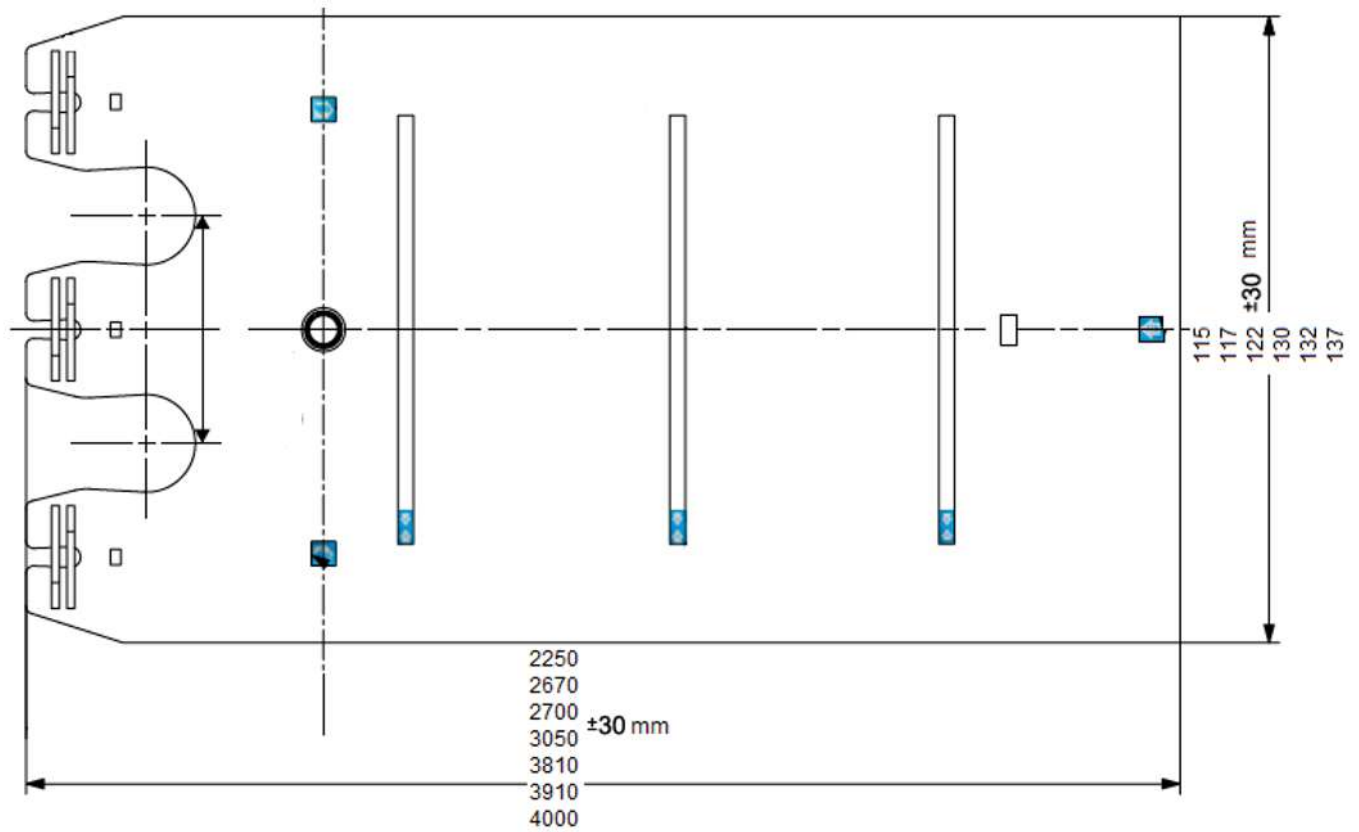
- Microscope Drape 48 mm (Straight Lens) (Zeiss)
- Microscope Drape 65 mm (Straight Lens) (Zeiss, Moller-Wedel)
- Microscope Drape 68 mm (Straight Lens) (Leica)



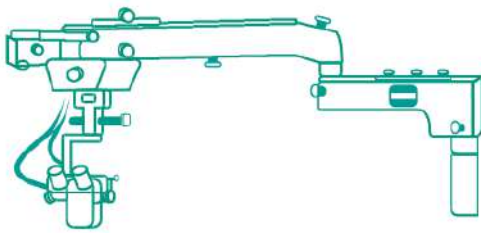
## Microscope Drape

## Technical Drawing

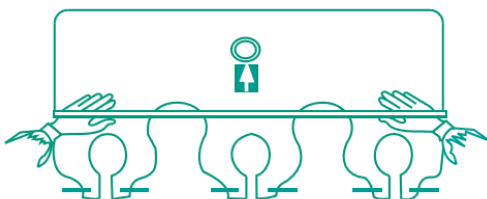
## Microscope Drape



## Instructions For Use



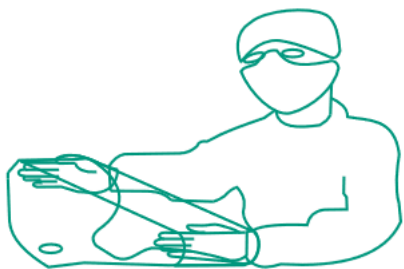
- 1 Prepare Microscope by clamping all cables securely. Adjust tension of knobs.



- 2 Unfold drape, lens cover facing down and away from you, label up.

## Microscope Drape

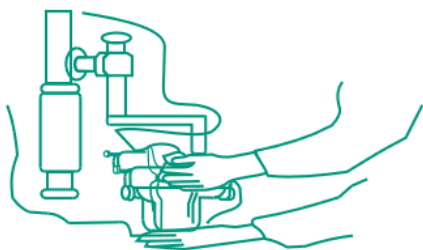
### Instructions For Use



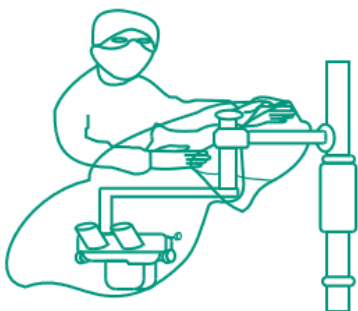
**3** With hands placed inside center fold, from pouch opening.



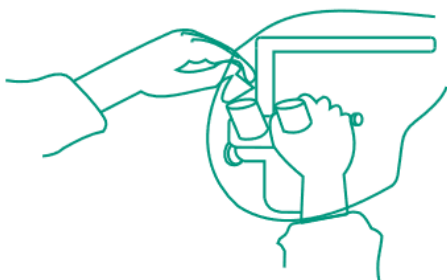
**4** Feed drape over furthest protruding microscope components, continue unfolding drape over balance of microscope equipment.



**5** Attach lens/light covers, applying upward pressure with palm of hand.



**6** Extend balance of drape over microscope arm, gather up extra width with straps.



**7** Tighten excess material around eyepieces. Just before procedure remove top.



## Microscope Drape

## Microscope Drape Versions

## Microscope Drape

REF NO	PRODUCT NAME	STERILIZATION
291 17	Microscope Drape 65 mm 115x225 cm (Slopped Lens)	EO
291 14	Microscope Drape 65 mm 115x300 cm (Slopped Lens)	EO
291 18	Microscope Drape 65 mm 117x163 cm (Slopped Lens)	EO
291 19	Microscope Drape 65 mm 117x203 cm (Slopped Lens)	EO
291 20	Microscope Drape 65 mm 117x225 cm (Slopped Lens)	EO
291 21	Microscope Drape 65 mm 117x267 cm (Slopped Lens)	EO
204 06	Microscope Drape 65 mm 117x305 cm (Slopped Lens)	EO
204 74	Microscope Drape 65 mm 122x210 cm (Slopped Lens)	EO
204 02	Microscope Drape 65 mm 122x225cm (Slopped Lens)	EO
204 75	Microscope Drape 65 mm 122x260 cm (Slopped Lens)	EO
204 09	Microscope Drape 65 mm 122x300cm (Slopped Lens)	EO
291 22	Microscope Drape 65 mm 132x225 cm (Slopped Lens)	EO
204 47	Microscope Drape 65 mm 132x267 cm (Slopped Lens)	EO
204 48	Microscope Drape 65 mm 132x305 cm (Slopped Lens)	EO
204 45	Microscope Drape 65 mm 132x381cm (Slopped Lens)	EO
204 49	Microscope Drape 65 mm 132x391 cm (Slopped Lens)	EO
204 41	Microscope Drape 65mm 132x400 cm (Slopped Lens)	EO
204 50	Microscope Drape 65 mm 137x267 cm (Slopped Lens)	EO
204 51	Microscope Drape 65 mm 137x305 cm (Slopped Lens)	EO
204 43	Microscope Drape 65 mm 137x381cm (Slopped Lens)	EO
204 52	Microscope Drape 65 mm 137x391cm (Slopped Lens)	EO
204 53	Microscope Drape 65 mm 137x400 cm (Slopped Lens)	EO

Microscope Drape

REF NO	PRODUCT NAME	STERILIZATION
204 74	Microscope Drape 65 mm WxL 95x215 cm (Straight Lens)	EO
291 16	Microscope Drape 65 mm WxL 115x225 cm (Straight Lens)	EO
204 30	Microscope Drape 65 mm WxL 117x225 cm (Straight Lens)	EO
204 38	Microscope Drape 65mm WxL 117x270 cm (Straight Lens)	EO
204 07	Microscope Drape 65 mm WxL 122x225 cm (Straight Lens)	EO
204 33	Microscope Drape 65 mm WxL 130x225 cm (Straight Lens)	EO

REF NO	PRODUCT NAME	STERILIZATION
204 37	Microscope Drape with Handle Protection 48 mm 122x225 cm	EO
204 11	Microscope Drape with Handle Protection 65 mm 122x225 cm	EO
204 16	Microscope Drape with Handle Protection 65 mm 122x225 cm Sloped	EO
204 23	Microscope Drape with Handle Protection 68 mm 122x225 cm	EO

REF NO	PRODUCT NAME	STERILIZATION
204 27	Microscope Drape 48 mm 115x225 cm	EO
204 29	Microscope Drape 48 mm 117x225 cm	EO
204 70	Microscope Drape 48 mm 117x267 cm Straight Lens	EO
204 01	Microscope Drape 48 mm 122x225 cm Straight Lens	EO
204 32	Microscope Drape 48 mm 130x225 cm	EO

REF NO	PRODUCT NAME	STERILIZATION
293 03	Bonnet Microscope Drape 65 mm Sloped 40x34 (Small)	EO
293 04	Bonnet Microscope Drape 65 mm Sloped 76x60 (Small)	EO

## Microscope Drape

## Microscope Drape Versions

## Microscope Drape

REF NO	PRODUCT NAME	STERILIZATION
204-28	Microscope Drape 68 mm WxL 115x225 cm	EO
204-55	Microscope Drape 68 mm WxL 115x305 cm	EO
204-31	Microscope Drape 68 mm WxL 117x225 cm	EO
204-56	Microscope Drape 68 mm WxL 117x267 cm	EO
204-36	Microscope Drape 68 mm WxL 117x305 cm	EO
204-03	Microscope Drape 68 mm WxL 122x225 cm	EO
204-21	Microscope Drape 68 mm WxL 122x300 cm	EO
204-34	Microscope Drape 68 mm WxL 132x225 cm	EO
204-58	Microscope Drape 68 mm WxL 132x267 cm	EO
204-59	Microscope Drape 68 mm WxL 132x305 cm	EO
204-60	Microscope Drape 68 mm WxL 132x381 cm	EO
204-61	Microscope Drape 68 mm WxL 132x391 cm	EO
204-62	Microscope Drape 68 mm WxL 132x400 cm	EO
204-63	Microscope Drape 68 mm WxL 137x225 cm	EO
204-64	Microscope Drape 68 mm WxL 137x267 cm	EO
204-65	Microscope Drape 68 mm WxL 137x305 cm	EO
204-66	Microscope Drape 68 mm WxL 137x381 cm	EO
204-67	Microscope Drape 68 mm WxL 137x391 cm	EO
204-68	Microscope Drape 68 mm WxL 137x400 cm	EO

