

COMPANY  
BOLLARD  
UP&DOWN  
BULKHEAD  
FLOODLIGHT  
IN-GROUND  
BRICKLIGHT  
GARDEN  
URBAN CLASSIC  
URBAN MODERN  
HIGH-BAY  
POST  
LAMPS  
REFERENCES

# ECOVIVI 400 GX53 LED

LARGE SIZE



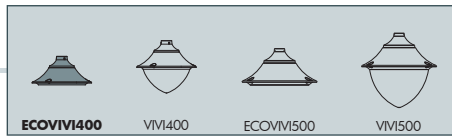
Modern luminaries made of shockproof resin material, UV-rays stabilized, rust and corrosion-free. Suitable for post top, wall and hanging installation. Supplied with flat diffuser granting no upward light emission. Equipped with TÜV approved, long-life and efficient **GX53 LED modular system** in different wattages. Designed according to the international regulations against light pollution (standard UNI 10819 – Installation area: Zone 1). Insulation class II, Protection rating IP65.

*Diffusore moderno realizzato in resina antiurto, stabilizzato ai raggi UV, inattaccabile da ruggine e corrosione. Idoneo per il montaggio a palo, a sospensione o a parete. Fornito con diffusore piatto per garantire assenza di emissioni di luce verso l'alto. Provvisto di sistema modulare a LED GX53 approvato TÜV di lunga durata ed alta efficienza disponibile in diverse potenze. Progettato in ottemperanza alle norme internazionali contro l'inquinamento luminoso (standard UNI 10819 – Area di installazione: Zona 1). Classe di isolamento II, grado di protezione IP65.*



EV4.000.C6L



**ECOVIVI 400 GX53 LED - COMPONENTS**

**IP65**



**ROOF** made of shockproof resin material one piece only, UV-rays stabilized, rust and corrosion-free.

**TETTO** in un unico pezzo, realizzato in resina antiurto, stabilizzata ai raggi UV, inattaccabile da ruggine e corrosione.



**DIFFUSER** with flat shape to avoid the skyward dispersion of the luminous flux, according to the international regulations against light pollution and in particular the standard UNI 108119. Made of UV-rays stabilized polycarbonate (PC).

**DIFFUSORE** con configurazione piatta per evitare la dispersione verso il cielo del flusso luminoso, in ottemperanza alle norme internazionali sull'inquinamento luminoso ed in particolare la norma UNI 10819. Realizzato in policarbonato (PC) stabilizzato ai raggi UV.



Decorative connection **RING** to be fixed on the luminaries diffuser.

**ANELLO** decorativo di connessione da fissare sul diffusore dell'apparecchio.

**ECOVIVI 400 GX53 LED**

EV4.000 \*



**Dimensions and weight**

Height: 243 mm  
Diameter: 480 mm  
Weight: 4,6 Kg  
Junction to support: diameter 60 mm  
Area expose to wind pressure:  
CxS = m<sup>2</sup> 0,1449

**Moulded colours:**

Black White Grey

**Diffuser PC (UV treated):**

Clear

**GX53 LED**



- **COST SAVING:** long-life and efficient LED light sources.
- **BUILT-IN DRIVER:** quick and easy lamp replacement
- **GREAT FLEXIBILITY:** GX53 standard lamp holder.
- **FUTURE-PROOFED LUMINARIES:** performances easy to upgrade to latest technology developments.
- **SUITABLE FOR OUTDOOR USE:** built-in driver fully protected against heat and humidity by silicone paste.

\*ADD. SUFFIX

Luminaries supplied with white resin CEILING provided with TÜV approved, long-life and efficient 6x GX53 LED lamps included. Each lamp can be quickly and easily replaced individually, making the luminaries maintenance very simple.



6x 7W <b>42W</b>	<b>4800 Lm</b>	4000 K .C6L
		3000 K .C6R
6x 10W <b>60W</b>	<b>7200 Lm</b>	4000 K .D6L
		3000 K .D6R

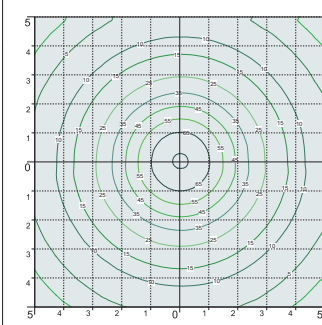
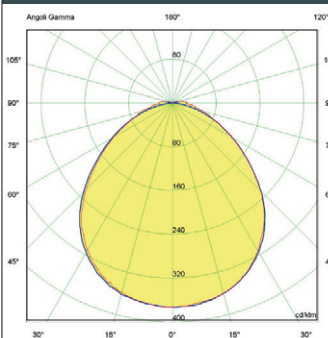
**LED LAMPS**



More technical details about TÜV approved Fumagalli LED Lamps on page 512.

\* ADD THESE SUFFIXES TO THE REFERENCES MENTIONED IN THE CATALOGUE

**PHOTOMETRIC DATA SAMPLE - ECOVIVI 400 GX53 LED**



**SAVE -48%**

6x10W GX53 LED  
**60W**  
(power consumption)

Area: 10x10mt  
Height: 3,5mt  
**37 lux**



**HQI 100W 112W**  
(power consumption)

Area: 10x10mt  
Height: 3,5mt  
**38 lux**

**ECOVIVI 400 E27**

COMPANY  
BOLLARD  
UP&DOWN  
BULKHEAD  
FLOODLIGHT  
IN-GROUND  
BRICKLIGHT  
GARDEN  
URBAN CLASSIC  
URBAN MODERN  
HIGH-BAY  
POST  
LAMPS  
REFERENCES

# ECOVIVI 400

LARGE SIZE



EV4.364.A10.C6L



EV4.129.C6L

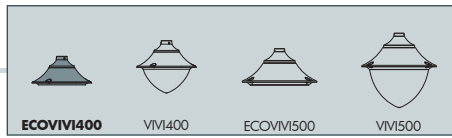


EV4.254.D6L



EV4.414.A10.D6L





**MIDIPIILAR/ECOVIVI400**  
EV4.254

Pcs 1  
Kg 5,2  
mc 0,092

**NEW LOT/ECOVIVI400**  
EV4.115

Pcs 1  
Kg 4,9  
mc 0,071

**ECOVIVI 400**  
EV4.000

Pcs 1  
Kg 4,6  
mc 0,09

**MARIO/ECOVIVI400**  
EV4.129

Pcs 1  
Kg 4,9  
mc 0,07

<b>EKTOR 3000 MIDIPIILAR/ ECOVIVI400 1L</b>	<b>AKILLE 3000 MIDIPIILAR/ ECOVIVI400 1L</b>
EV4.364.A10	EV4.414.A10
Pcs 1 Kg 33,7 mc 0,262	

<b>EKTOR 4000 MIDIPIILAR/ECOVIVI400 1L</b>	<b>AKILLE 4000 MIDIPIILAR/ECOVIVI400 1L</b>
EV4.371.A10	EV4.421.A10
Pcs 1 Kg 40,5 mc 0,314	
<b>EKTOR 3500 MIDIPIILAR/ECOVIVI400 1L</b>	<b>AKILLE 3500 MIDIPIILAR/ECOVIVI400 1L</b>
EV4.367.A10	EV4.417.A10
Pcs 1 Kg 37,1 mc 0,284	

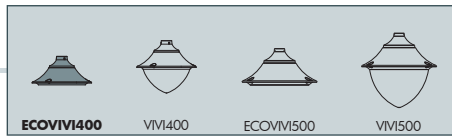
**EKTOR 2500 MIDIPIILAR/ECOVIVI400 1L**  
EV4.361.A10

Pcs 1  
Kg 30,3  
mc 0,235

# ECOVIVI 400

LARGE SIZE





**EKTOR 2500 MIDIPIILAR/ECOVIVI400 3L**  
EV4.361.A30

Pcs 1  
Kg 41  
mc 0,497

**EKTOR 2500 MIDIPIILAR/ECOVIVI400 2L**  
EV4.361.A20

Pcs 1  
Kg 35,7  
mc 0,306

<b>EKTOR 4000 MIDIPIILAR/ECOVIVI400 2L</b>	<b>AKILLE 4000 MIDIPIILAR/ECOVIVI400 2L</b>
EV4.371.A20	EV4.421.A20
Pcs 1 Kg 46 mc 0,385	
<b>EKTOR 3500 MIDIPIILAR/ECOVIVI400 2L</b>	<b>AKILLE 3500 MIDIPIILAR/ECOVIVI400 2L</b>
EV4.367.A20	EV4.417.A20
Pcs 1 Kg 42,5 mc 0,358	
<b>EKTOR 3000 MIDIPIILAR/ECOVIVI400 2L</b>	<b>AKILLE 3000 MIDIPIILAR/ECOVIVI400 2L</b>
EV4.364.A20	EV4.414.A20
Pcs 1 Kg 39,1 mc 0,332	

<b>EKTOR 4000 MIDIPIILAR/ECOVIVI400 3L</b>	<b>AKILLE 4000 MIDIPIILAR/ECOVIVI400 3L</b>
EV4.371.A30	EV4.421.A30
Pcs 1 Kg 51,1 mc 0,576	
<b>EKTOR 3500 MIDIPIILAR/ECOVIVI400 3L</b>	<b>AKILLE 3500 MIDIPIILAR/ECOVIVI400 3L</b>
EV4.367.A30	EV4.417.A30
Pcs 1 Kg 47,7 mc 0,55	
<b>EKTOR 3000 MIDIPIILAR/ECOVIVI400 3L</b>	<b>AKILLE 3000 MIDIPIILAR/ECOVIVI400 3L</b>
EV4.364.A30	EV4.414.A30
Pcs 1 Kg 44,3 mc 0,523	