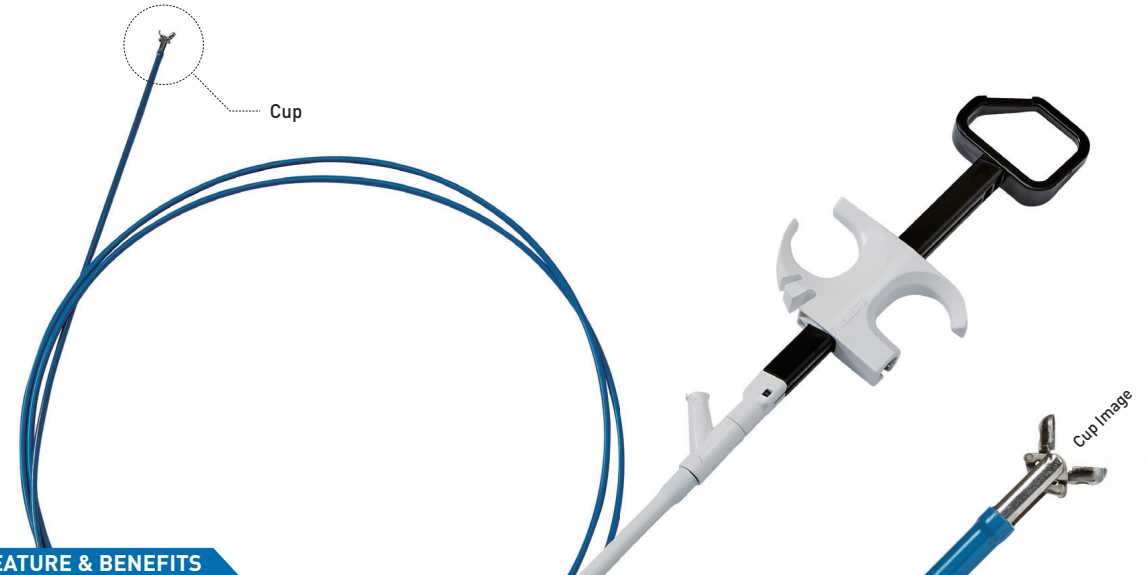


SPECIFICATION

Type	Model	Type of Retation	Loop Size	Loop Stiffness	Sheath O.D	Working Length	Number of Use	Validity of Sterilization
Oval1	FM-ESN006(2400)(Soft)	Non-Rotation	6mm	Soft	ø2.4mm	2,400mm	Single Use Only	3 years
	FM-ESN006(2400)(Stiff)			Stiff				
	FM-ESN006(2400)(Moderato)			Moderato				
	FM-ES0006(2400)(Soft)	Rotation	6mm	Soft				
	FM-ES0006(2400)(Stiff)			Stiff				
	FM-ES0006(2400)(Moderato)			Moderato				
	FM-ESN004(2400)(Soft)	Non-Rotation	10mm	Soft				
	FM-ESN004(2400)(Stiff)			Stiff				
	FM-ESN004(2400)(Moderato)			Moderato				
	FM-ES0004(2400)(Soft)	Rotation	10mm	Soft				
	FM-ES0004(2400)(Stiff)			Stiff				
	FM-ES0004(2400)(Moderato)			Moderato				
	FM-ESN005(2400)(Soft)	Non-Rotation	15mm	Soft				
	FM-ESN005(2400)(Stiff)			Stiff				
	FM-ESN005(2400)(Moderato)			Moderato				
	FM-ES0005(2400)(Soft)	Rotation	15mm	Soft				
FM-ES0005(2400)(Stiff)	Stiff							
FM-ES0005(2400)(Moderato)	Moderato							
FM-ESN002(2400)(Soft)	Non-Rotation	24mm	Soft					
FM-ESN002(2400)(Stiff)			Stiff					
FM-ESN002(2400)(Moderato)			Moderato					
FM-ES0002(2400)(Soft)	Rotation	24mm	Soft					
FM-ES0002(2400)(Stiff)			Stiff					
FM-ES0002(2400)(Moderato)			Moderato					
FM-ESN003(2400)(Soft)	Non-Rotation	30mm	Soft					
FM-ESN003(2400)(Stiff)			Stiff					
FM-ESN003(2400)(Moderato)			Moderato					
FM-ES0003(2400)(Soft)	Rotation	30mm	Soft					
FM-ES0003(2400)(Stiff)			Stiff					
FM-ES0003(2400)(Moderato)			Moderato					
Crab	FM-ESN006(Crab)(2400)(Stiff)	Non-Rotation	6mm	Stiff				
	FM-ES0006(Crab)(2400)(Stiff)	Rotation	6mm					
	FM-ESN004(Crab)(2400)(Stiff)	Non-Rotation	10mm					
	FM-ES0004(Crab)(2400)(Stiff)	Rotation	10mm					
	FM-ESN005(Crab)(2400)(Stiff)	Non-Rotation	15mm					
	FM-ES0005(Crab)(2400)(Stiff)	Rotation	15mm					
	FM-ESN002(Crab)(2400)(Stiff)	Non-Rotation	24mm					
	FM-ES0002(Crab)(2400)(Stiff)	Rotation	24mm					
FM-ESN003(Crab)(2400)(Stiff)	Non-Rotation	30mm						
FM-ES0003(Crab)(2400)(Stiff)	Rotation	30mm						
Crescent	FM-ES0004(Crecent)(2400)	Non-Rotation	10mm	Soft				
	FM-ES0004(Crecent)(2400)		15mm	Stiff				
	FM-ES0005(Crecent)(2400)		15mm	Stiff				
	FM-ES0005(Crecent)(2400)		24mm	Soft				
FM-ES0002(Crecent)(2400)	Non-Rotation	24mm	Soft					
FM-ES0002(Crecent)(2400)		24mm	Stiff					
Cold	FM-ESN006(Cold)(2400)	Non-Rotation	6mm	Soft (0.2mm)				
	FM-ES0006(Cold)(2400)	Rotation	6mm					
	FM-ESN004(Cold)(2400)	Non-Rotation	10mm					
	FM-ES0004(Cold)(2400)	Rotation	10mm					

Clear-CoaBite



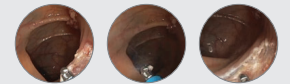
FEATURE & BENEFITS

(1) Built-in Saline Irrigation Port

- This product has the saline Irrigation port, This could let the users don't need to change snare to flush saline or water for detecting bleeding site.

(2) Improving usability

- By shortening the conductive length at the distal end of sheath from 9mm to 4mm, operators do not need to focus out in order to take the angle again.



SPECIFICATION

Model	Shape of Cup	Cup(Jaw)O.D	Sheath O.D	Working Length	Compatible Endoscopes		Number of Use	Validity of Sterilization
					Length	Channal Inner Diameter		
FM-EB0001	Oval	ø1.72mm	ø2.3mm	1,600mm	Max. 1,100mm	Min. ø2.8mm	Single Use Only	3 years
FM-EB0002				2,400mm	Max. 1,800mm			
FM-EB0003		1,600mm		Max. 1,100mm				
FM-EB0004		2,400mm		Max. 1,800mm				