

TECHNICAL SPECIFICATIONS

| Drug / Excipient | |
|------------------|-------------------------|
| Drug | Sirolimus |
| Drug Dose | 1.27 µg/mm ² |
| Drug Carrier | Phospholipid |
| Balloon | |
| Balloon Material | Polyamide |
| Catheter Design | RX/Monorail |
| No. of folds | 3** |
| Compliance | Semi-compliant |

** 2 folds in 1.50 mm diameter

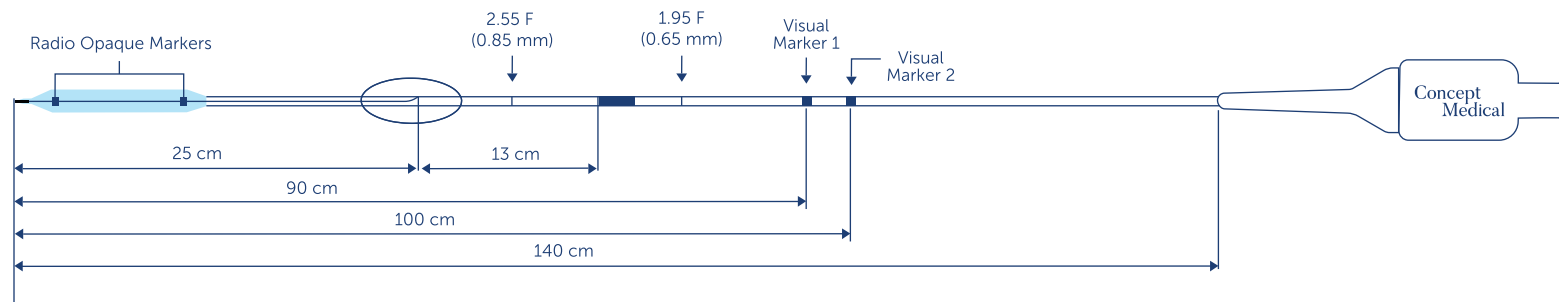
| Delivery System | |
|---------------------------------------|----------------------------|
| Shaft Diameter - Proximal | 1.95 F |
| Shaft Diameter - Distal | 2.67 F |
| Usable Catheter Length | 140 cm |
| Tip Profile | 0.016" |
| Nominal Pressure | 8 bar |
| Rated Burst Pressure | 14 bar* |
| Guiding Catheter Compatibility | 6F |
| Guidewire Compatibility | 0.014" maximum recommended |
| Crossing profile (varies with size) | 0.029" |

We highly recommend preparing the vessel bed before treatment with MagicTouch - SCB

*Do Not Exceed RBP

ORDERING INFORMATION

| Balloon Dia(mm) | Balloon Length (mm) | | | | | | |
|-----------------|---------------------|----------|----------|----------|----------|----------|----------|
| | 10 | 15 | 20 | 25 | 30 | 35 | 40 |
| 1.50 | CMN15010 | CMN15015 | CMN15020 | CMN15025 | CMN15030 | CMN15035 | CMN15040 |
| 2.00 | CMN20010 | CMN20015 | CMN20020 | CMN20025 | CMN20030 | CMN20035 | CMN20040 |
| 2.25 | CMN22510 | CMN22515 | CMN22520 | CMN22525 | CMN22530 | CMN22535 | CMN22540 |
| 2.50 | CMN25010 | CMN25015 | CMN25020 | CMN25025 | CMN25030 | CMN25035 | CMN25040 |
| 2.75 | CMN27510 | CMN27515 | CMN27520 | CMN27525 | CMN27530 | CMN27535 | CMN27540 |
| 3.00 | CMN30010 | CMN30015 | CMN30020 | CMN30025 | CMN30030 | CMN30035 | CMN30040 |
| 3.50 | CMN35010 | CMN35015 | CMN35020 | CMN35025 | CMN35030 | CMN35035 | CMN35040 |
| 4.00 | CMN40010 | CMN40015 | CMN40020 | CMN40025 | CMN40030 | CMN40035 | CMN40040 |



*The above diagram is just an illustration of the product.

Disclaimer: The law restricts these devices to sale by or on the order of a physician. Indications, contradictions, warnings can be found in the product labelling / IFU supplied with each device. For restricted use only in countries where product is registered with applicable health authorities.



f t @ in /conceptmedicals

✉ info@conceptmedical.com

🌐 www.conceptmedical.com

Scan for more details

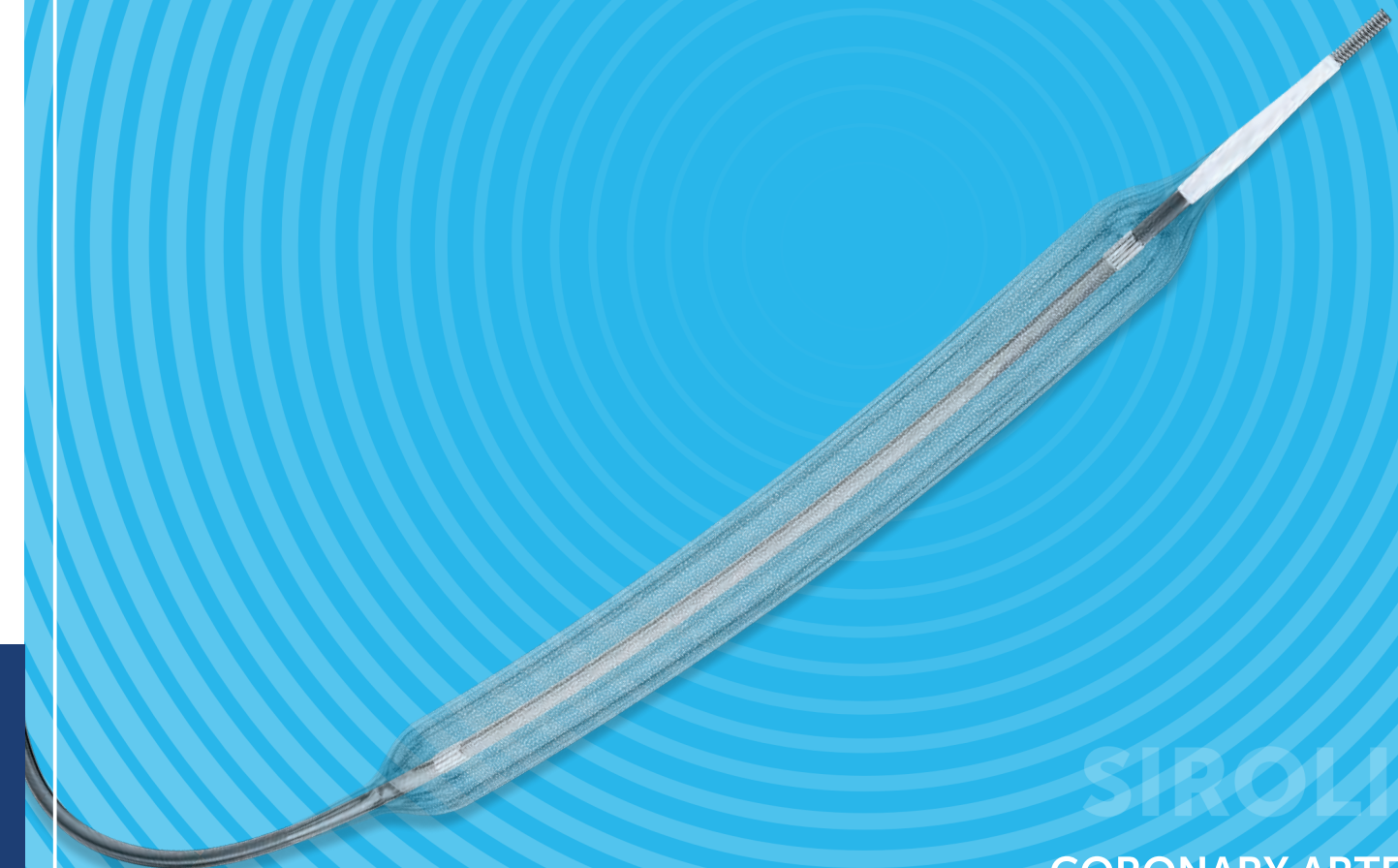


CB.BA.MN.BRO.ver.2.0.23-05



MagicTouch **SCB**

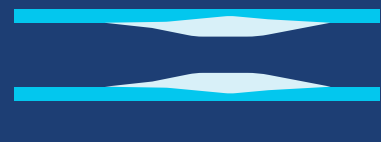
SIROLIMUS COATED BALLOON CATHETER



SIROLIMUS
CORONARY ARTERY DISEASE

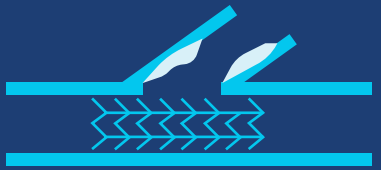
MAGICTOUCH SCB

MagicTouch - SCB is a Sirolimus Drug Coated Balloon catheter for the treatment of the coronary arteries; intended for treating In-Stent Restenosis, Small Vessels, Bifurcations lesions and De-Novo lesions.



DE-NOVO LESIONS

Concept of treating with leaving Nothing behind in patients with highly susceptible restenosis rate due to inherent disease conditions and comorbid conditions.



BIFURCATION LESIONS

Addresses the issue of metal to artery ratio by allowing one stent technique and less complications in side branch.



IN-STENT RESTENOSIS

Addresses the issue of restenosis by homogenous drug distribution without further increasing metal load in diffuse, focal and edge stenosis.



SMALL VESSELS

Helps in treating challenging anatomies in small diameter without losing lumen diameter.

UNIQUE COATING TECHNOLOGY

MagicTouch - SCB is developed with Nanolute Technology which possesses unique circumferential coating technology that facilitates homogeneous drug distribution to target lesions



COATING

Circumferential Coating is performed under Low Pressure inflation leading to 100% surface area coating



REFOLDING

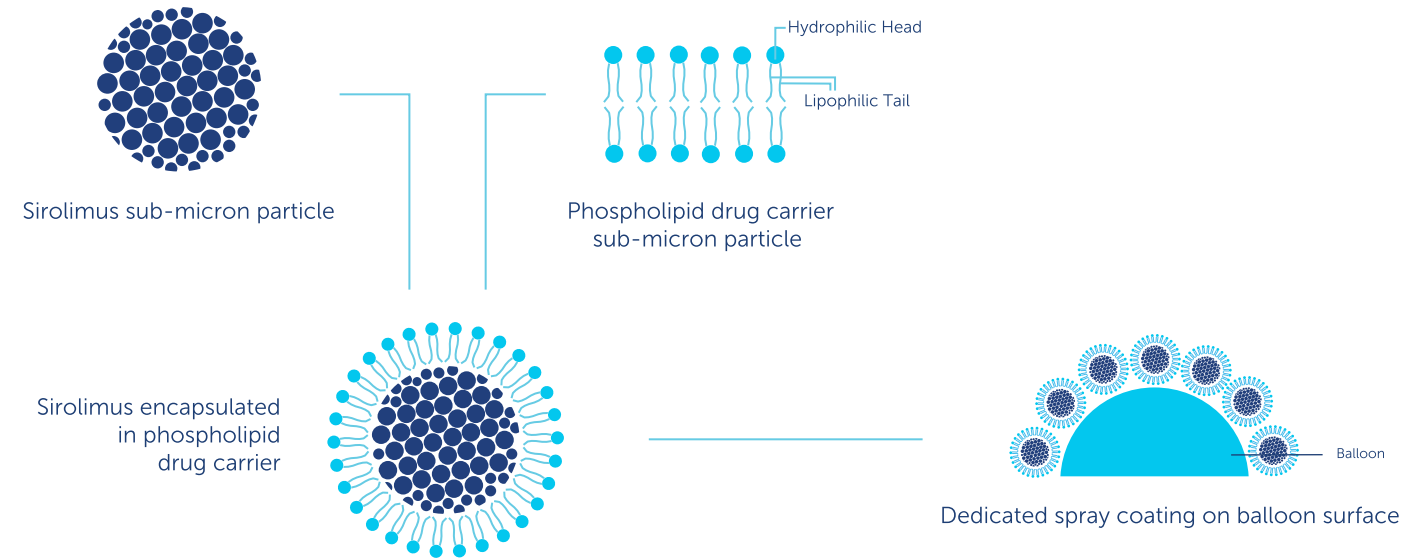
3 Folds



INFLATION

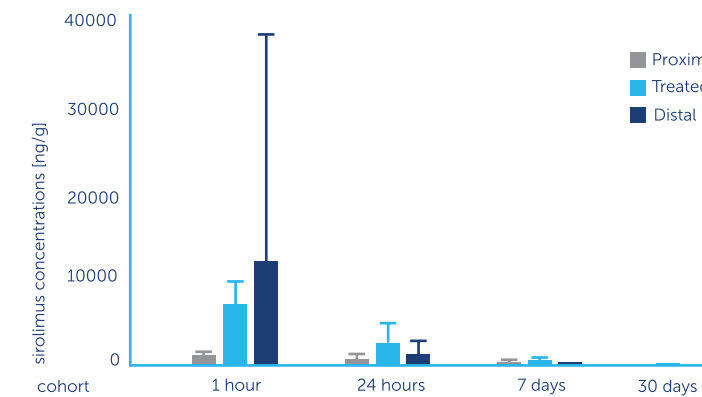
Homogeneous Drug Delivery due to Circumferential Coating

NANOLUTE TECHNOLOGY

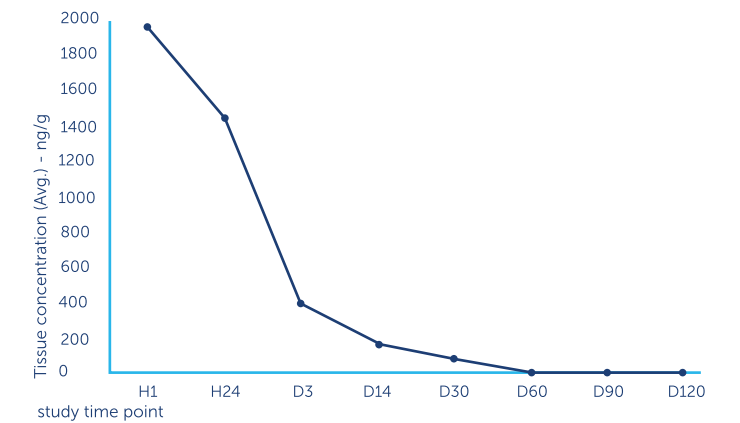


PHARMACOKINETIC STUDY

In ISR Lesion*



In De-Novo Lesion

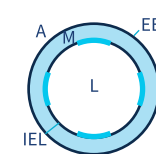


*Study Ongoing

SIROLIMUS DISTRIBUTION STUDY

DTF labelled Sirolimus was used to assess the drug distribution following DCB treatment*

1 HR

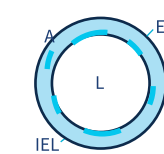


Intima

60-70% above IEL

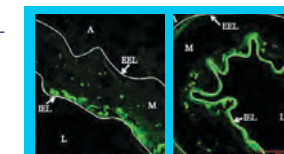


DAY 3

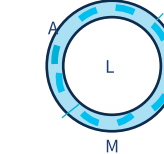


Media

30-40% within Media

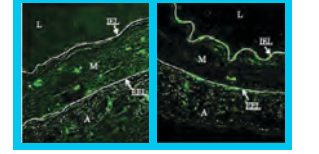


DAY 7



Adventitia

30-40% below IEL



A: Adventitia; EEL: External Elastic Lamina; IEL: Internal Elastic Lamina; L: Lumen; M: Media *EuroIntervention. 2013 May 20;9(1): 148-56