



permedica  
ORTHOPAEDICS

# JUMP<sup>®</sup> System

## **TRASER<sup>®</sup>** *RM*

Revision Modular Cup



**PRODUCT  
INFORMATION**



0426



# TRASER® *Random Trabecular Laser Technology*

**JUMP® System TRASER®** cementless components are obtained through Selective Laser Melting additive manufacturing process, which allows to obtain solid objects from 3D-CAD digital models by adding the raw material (Ti6Al4V powder) layer over layer.

The randomized size and geometrical shape of the trabecular porous surface in contact with the bone provides optimal structure for bone in-growth and secondary fixation of the implant.

## JUMP® System TRASER®

## 13 Implant sizes

Hemispherical geometry with polar deflection and multi-hole configuration allowing multiple positioning possibilities of the fixation screws. The **TRASER®** random trabecular structure ensure strong grip for primary fixation thus favouring bone ingrowth and biological integration.

The **RM Plus** version has a flange in the cranial region and allows the possibility of assembling a modular **Hook** in the ischial region, which can be attached in 3 positions.

The screw holes have a threaded inner and are compatible with both compression and angular stability screws.

The **Cranial Augments** allow to compensate for the presence of any bone defects. They can be assembled on both versions and are available in two heights (12 and 16 mm) for each cup size. They can also be used as a «stand alone» solution as fillers to be fixed directly to the bone for the subsequent cementation of a cup inside.

The **RM Plus** version allows the use of a modular **Caudal Hook**, available in 3 lengths, assembled by snapping it into the dovetail slots in the ischial region of the cup. The hook can be oriented in 3 positions.

The cranial flange can be equipped with moldable **Flanged Augments** that allow to extend screws fixation in the iliac region.

The **JUMP® System TRASER® RM** cups allow for multiple joint solutions. In addition to the JUMP® System joint inserts range, the following options are available:

- ✓ Specific **RM Dual Mobility Inserts** (compatible with the ACORN Dual Mobility inserts in UHMWPE or VITAL-E).
- ✓ **Adapters** that allow lateralization of the hip rotation center and modification of its coverage angle ("face changing"). They can be oriented in 5 positions and are compatible with JUMP® System joint inserts.



**JUMP® System TRASER® RM Cups**

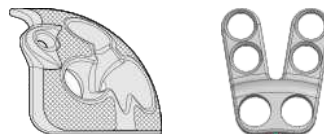
Class III

**TRASER® RM****TRASER® RM PLUS**

| SIZE | REF.   | REF.                                 |
|------|--------|--------------------------------------|
| 50   | 39550  | 39650                                |
| 52   | 39552  | 39652                                |
| 54   | 39554  | 39654                                |
| 56   | 39556  | 39656                                |
| 58   | 39558  | 39658                                |
| 60   | 39560  | 39660                                |
| 62   | 39562  | 39662                                |
| 64   | 39564  | 39664                                |
| 66   | 39566  | 39666                                |
| 68   | 39568  | 39668                                |
| 72   | 39572* | Special sizes available upon request |
| 76   | 39576* |                                      |
| 80   | 39580* |                                      |

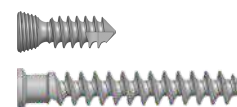
**Accessories**

Class IIb

**AUGMENTS**

| SIZE | H. 12mm<br>REF. | H. 16mm<br>REF. | Flanged<br>REF. |
|------|-----------------|-----------------|-----------------|
| 50   | 39701           | 39702           | 39725           |
| 52   | 39703           | 39704           | 39726           |
| 54   | 39705           | 39706           | 39727           |
| 56   | 39707           | 39708           | 39728           |
| 58   | 39709           | 39710           | 39729           |
| 60   | 39711           | 39712           | 39730           |
| 62   | 39713           | 39714           | 39731           |
| 64   | 39715           | 39716           | 39732           |
| 66   | 39717           | 39718           | 39733           |
| 68   | 39719           | 39720           | 39734           |

Screws for assembly included in package

**FIXATION SCREWS**

| Taglia | Angle Stable<br>REF. | FLAT Head<br>REF. |
|--------|----------------------|-------------------|
| 20mm   | 39751                | 36720             |
| 25mm   | 39752                | 36725             |
| 30mm   | 39753                | 36730             |
| 35mm   | 39754                | 36735             |
| 40mm   | 39755                | 36740             |
| 45mm   | 39756                | 36745             |
| 50mm   | 39757                | 36750             |
| 55mm   | 39758                | -                 |
| 60mm   | 39759                | 36760             |

**CAUDAL HOOK**

| SIZE   | REF.  |
|--------|-------|
| SMALL  | 39671 |
| MEDIUM | 39672 |
| LARGE  | 39673 |

Class III

**Dual Mobility Inserts**

| Cup Size | COLOR CODE | REF.  |
|----------|------------|-------|
| 50-54    | GREY       | 39741 |
| 56-60    | BLUE       | 39742 |
| 62+      | RED        | 39743 |



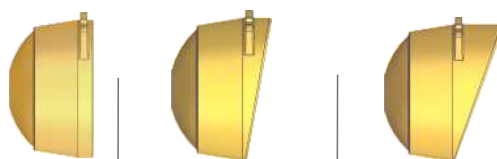
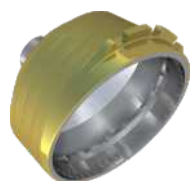
| Cup Size | COLOR CODE | REF.  |
|----------|------------|-------|
| Adapter  | YELLOW     | 36211 |
| 50-54    | GREY       | 36212 |
| 56-60    | BLUE       | 36213 |
| 62+      | RED        | 36214 |



|         |         |            | UHMWPE | VITAL-E | VITAL-XE® |
|---------|---------|------------|--------|---------|-----------|
| inner Ø | outer Ø | COLOR CODE | REF.   | REF.    | REF.      |
| 28 mm   | 40mm    | GREY       | 38848* | 38848E  | 38848XE*  |
|         | 42mm    | BLUE       | 38850* | 38850E  | 38850XE*  |
|         | 44mm    | RED        | 38852* | 38852E  | 38852XE*  |

|         |         |            | UHMWPE | VITAL-E | VITAL-XE® |
|---------|---------|------------|--------|---------|-----------|
| inner Ø | outer Ø | COLOR CODE | REF.   | REF.    | REF.      |
| 28 mm   | 38mm    | YELLOW     | 38846* | 38846E  | 38846XE*  |
|         | 40mm    | GREY       | 38848* | 38848E  | 38848XE*  |
|         | 44mm    | BLUE       | 38852* | 38852E  | 38852XE*  |
|         | 46mm    | RED        | 38854* | 38854E  | 38854XE*  |

Class III

**ADAPTERS for Inserts**

ATTENTION:  
The COLOUR CODE refers to the coupling between:  
SHELL / ADAPTER (Outer)  
ADAPTER / INSERT (inner)

| COLOR CODE |        | Neutral +5mm | Angled 10° | Angled 10°+5mm | Angled 20° | Angled 20°+5mm |
|------------|--------|--------------|------------|----------------|------------|----------------|
| outer      | inner  | REF.         | REF.       | REF.           | REF.       | REF.           |
| GREY       | YELLOW | 39680        | 39683      | 39689          | 39686      | 39692          |
| BLUE       | GREY   | 39681        | 39684      | 39690          | 39687      | 39693          |
| RED        | BLUE   | 39682        | 39685      | 39691          | 39688      | 39694          |

\* References with asterisk are available ON REQUEST

### Class III

**ATTENTION:**  
The COLOUR CODE refers to  
the coupling between the  
CUP/ADAPTER and the INSERT.

**INTENDED PURPOSE:**

The use of the device is indicated in cases of acetabular reconstruction following failed total or partial hip arthroplasty in the presence of acetabular bone defects, internal fixation of acetabular fractures, arthrodesis, total hip arthroplasty for congenital hip dysplasia. Anchorage of the device to the bone is achieved by primary stabilization using screws, without the use of cement, and secondary stabilization by osseointegration.

**STERILIZATION:**

**Validity:** 10 years.

**CLASSIFICATION:**

**Class III or IIb** as reported in Directive 2005/50/CE (and related D.lgs 26 april 2007 n.65) concerning re-classification of Hip, Knee and Shoulder joint prostheses which modifies classification criteria of Annex IX of Directive 93/42/CEE and next integrations and amendements.

**CUPS and ACCESSORIES:**

*CUPS/AUGMENTS:* Titanium Aluminium Vanadium Ti6Al4V Alloy - ASTM F2924.

**FLANGED AUGMENT:** Unalloyed titanium Ti - ISO5832/2.

*RM Dual Mobility INSERTS /ADAPTERS/SCREWS: Titanium Aluminium Vanadium Ti6Al4V Alloy - ISO5832/3*

## INSERTS

**UHMWPE:** Ultra High Molecular Weight Polyethylene without Calcium Stearate - ISO5834/1/2.

**VITAL-XE®:** cross-linked UHMWPE without Calcium Stearate added with Vitamin E - ISO5834/1

**VITAL-E:** UHMWPE without Calcium Stearate added with Vitamin E - ISO5834/1.

### Metal Dual Mobility:

- PM734 highly nitrogenized Stainless Steel alloy ISO5832/9

**FINITURA SUPERFICIALE:**

**TRASER®:** high roughness random trabecular surface with rough and irregular pores shape, achieved through SLM (Selective Laser Melting) technology. Average pore size 650µm.

**BIOLOY®:** TiNbN coating (Dual Mobility inserts)

# CHALLENGING EXCELLENCE IN TECHNOLOGY