



Print MASTER PH74-4

[Handwritten signature]

**HEIDELBERGER DRUCKMASCHINEN
AKTIENGESELLSCHAFT**

Kurfürsten-Anlage 52-60
69115 Heidelberg

Deutschland



Made in Germany

ACHTUNG

Deutsche und ausländische Patente

Wesentliche Teile, Einrichtungen und Funktionen der
Heidelberger Druckmaschinen sind durch Patente
in vielen Ländern der Welt geschützt. Vor Nachbau
wird gewarnt. Verstöße werden gerichtlich verfolgt.



4 Workplaces at the press

4.1 Description of the workplaces

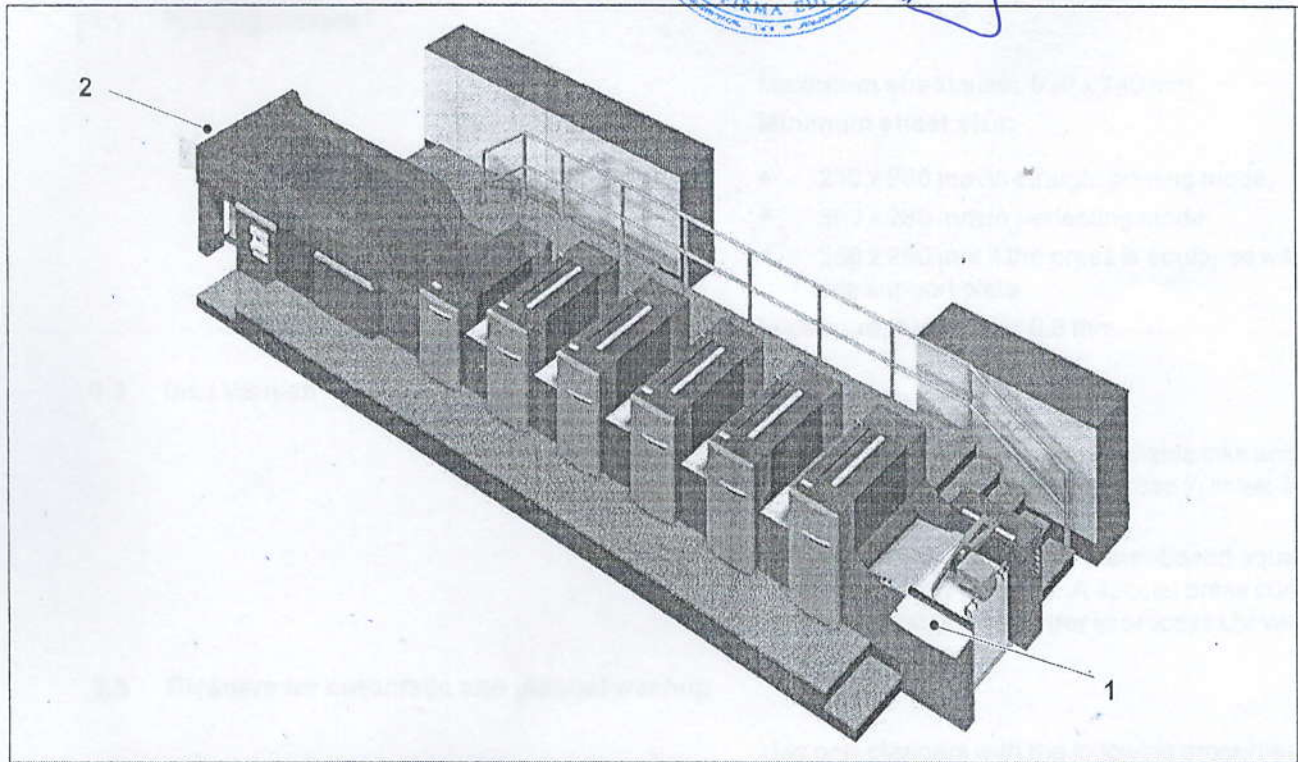


Fig. 1 Overview of the workplaces on the SM 74

- Control console on the feeder (Fig. 1/1),
- Control console on the delivery (Fig. 1/2),
- Control console of the press control system,
- Steps and platforms with surfaces made of bulb plate,
- Area for loading and removing the feeder/delivery piles.

Intended operation and use of workplaces

The machine offers the following features for operability, accessibility and possibilities for climbing up or down:

- The operator's side of the press which is accessible from a footboard has been optimally designed with regard to body postures and operating sequences in order to enable ergonomic working conditions in an upright posture in the lower part of the printing unit and in the area of the sheet-carrying cylinders. This includes activities such as changing plates and blankets, manual cleaning, settings on sheet-carrying cylinders and inserting packing sheets.
- The drive side provides an optimal step arrangement for climbing up and down in order to carry out operations in the upper part of the printing unit/ink-



3 Technical specifications

3.1 Printing material

Maximum sheet size: 530 x 740 mm

Minimum sheet size:

- 210 x 280 mm in straight printing mode,
- 300 x 280 mm in perfecting mode
- 280 x 280 mm if the press is equipped with feeder pile support plate.

Maximum thickness: 0.6 mm.

3.2 Ink / Varnish

- Use only commercially available inks and printing unit varnishes intended for use in sheet-fed offset presses.
- In the coating unit only water-based aqueous varnishes may be used. A special press configuration is required in order to process UV varnishes.

3.3 Cleaners for automatic and manual washup

Use only cleaners with the following properties (unless otherwise specified in this manual):

- Flash point > 55 °C,
- Benzene content < 0.1 %,
- Toluene and xylene content < 1 %,
- Aromatic compounds (> C₉) < 1 %,
- Cleaners free of chlorinated hydrocarbons, CFCs, terpenes, n-hexane, secondary amines and amides,
- Cleaners free of other hazardous substances.

For more information on cleaners see the maintenance manual.

3.4 Noise emission values

According to EN 13023:

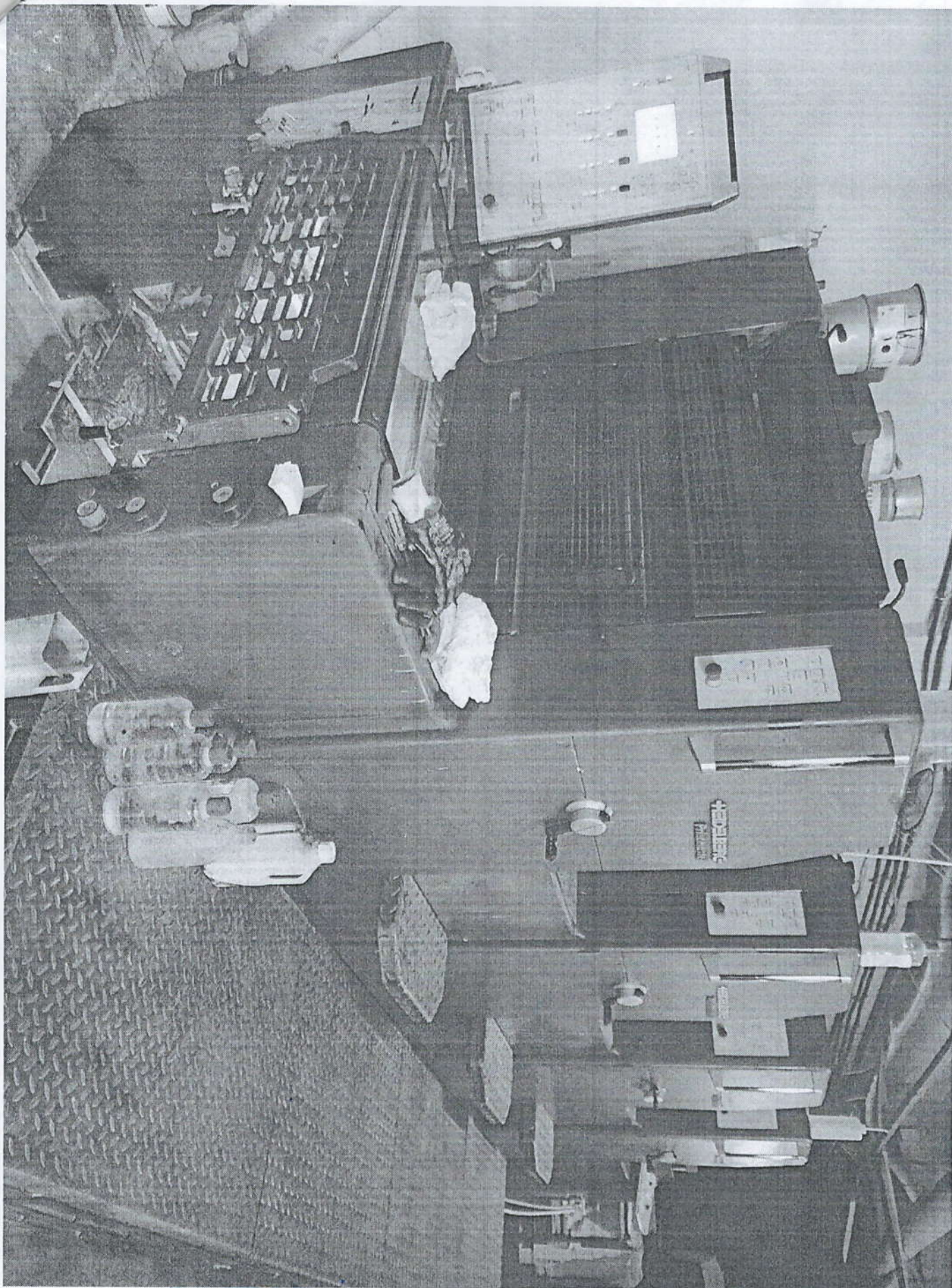
- Sound level at the feeder control console: 80 dB (A)
- Sound level at the delivery: 83 dB (A)

Additional measured value according to DIN 45635, sheet 27:

- Sound level at the feeder (front side): 84 dB (A)

3.5 Vibrations - effects on human beings

The daily limit values for whole-body vibrations and vibrations in hands and arms are not exceeded. There-



Print master 74-4

