

---

## Product Catalogue

Sakura Finetek Europe



continuous innovation for pathology





# Welcome to Sakura

**Sakura has achieved its success and solidified its reputation by providing timely, ingenious solutions to the real challenges laboratories face on a day-to-day basis.**

**Our rich history has given us a thorough understanding of technology, quality, reliability, value for money and our customer's requirements. We use this knowledge and passion to develop high quality instruments, consumables and services that anticipate developments in both technology and market need.**

**Providing this combination has established Sakura as a trusted Total Solutions Provider.**

## A long tradition of excellence

Known for best-in-class automation and reliability Sakura Finetek remains a privately-held company in business for almost 150 years. The history of Sakura goes back to 1871, the early Meiji period. Prior to 1870, the company was called Iwashiyu, and it manufactured and sold pharmaceuticals throughout Japan. The medical equipment division of Iwashiyu was formed in 1871, and by 1887, the trademark Sakura (literally, "cherry blossom") was registered. For the next 90 years, the company manufactured a variety of medical equipment including the first Japanese microscope. In 1962, the company name was changed to Sakura Finetek Co., Ltd. Sakura is the original manufacturer of the Tissue-Tek®, Tissue-Tek Prisma®, Tissue-Tek VIP® and Tissue-Tek Xpress® x Series products that have become industry standards over the years.

This lineup of prestigious products also includes our consumables like the Accu-Edge® Blade Systems, Tissue-Tek® Uni-Cassette® Systems and Tissue-Tek® Paraform® brands.

Sakura Finetek U.S.A., Inc. was established in the United States in 1986. The company acquired the histology and cytology product lines of Miles Inc. in 1994.

In 1994 Sakura Finetek Europe is set up as an independent organisation, reporting to the Sakura Finetek U.S.A., Inc. Sakura Finetek Europe has the mission to support its sales entities and distributors.

Today, we distribute products through our network of more than 60 Sakura sales entities and distributors to over 100 countries in Europe, Middle East, Africa and India. The organisation is developing, professionalizing and growing continuously, and thus maintaining its position as a trustworthy and valuable partner in pathology. With the global headquarters in Japan and regional headquarters in Japan, the United States and The Netherlands, the global strategy of worldwide representation has been fulfilled to guarantee the customer the best way in service and support.

Changes are necessary to cope with increasing workload, cost pressure and a demand for shorter turnaround times. Highly quality instruments and consumables are not enough these days, more direct help is needed. Sakura developed histopathology services to support you to meet future challenges and to be ahead of time. Sakura is a trusted total solutions provider.

## Global Mission Statement

Advancing cancer diagnostics by providing integrated solutions for anatomic pathology and patients through best-in-class innovation, quality and customer care.



# Table of contents

|                                       |           |
|---------------------------------------|-----------|
| <b>Intro</b>                          | <b>2</b>  |
| <b>Sakura Services</b>                | <b>4</b>  |
| <b>SMART Automation</b>               | <b>8</b>  |
| <b>1 Grossing</b>                     | <b>9</b>  |
| <b>2 Identification</b>               | <b>15</b> |
| <b>3 Tissue Processing</b>            | <b>19</b> |
| <b>4 Tissue Embedding</b>             | <b>27</b> |
| <b>5 Microtomy</b>                    | <b>39</b> |
| <b>6 Staining &amp; Coverslipping</b> | <b>47</b> |
| <b>7 Imaging</b>                      | <b>59</b> |
| <b>8 Cryotomy</b>                     | <b>63</b> |
| <b>9 Cytology</b>                     | <b>67</b> |
| <b>10 Archiving</b>                   | <b>69</b> |

---

# Sakura Services

**Increasing workload and cost pressures, coupled with the ever pressing demand for shorter turnaround times are just some of the daily challenges that histopathology laboratories deal with. High quality instruments, consumables and advice can support the laboratory manager and staff, but there is more.**

More direct help is needed to prepare your laboratory for the future. Sakura's range of histopathology services is designed to assist you to meet these challenges and position your laboratory optimally in a highly competitive world and place you ahead of time. Complementing the high quality instruments and consumables we are known for, our services help you to become more efficient, reduce your turnaround times and increase the quality of your laboratory's results.

## Service Agreements

*High instrument performance and maximised uptime with predictable pricing*

In order to guarantee the daily routine in your laboratory, the continuous availability and reliable operations of your instruments are crucial. Sakura's highly skilled and certified Technical Service Team provides annual preventative maintenance as well as the latest hardware and software updates for your Sakura instrument, resulting in less corrective maintenance. With one of Sakura's three different Service Agreements, you are ensured of optimal and quick on-site response if your instruments malfunction.

With a Platinum, Gold or Silver Service Agreement, we can meet your needs and budget. A fixed periodic fee will



## Platinum Service Agreement includes Tissue-Tek® iSupport™

The next level in unmatched, reliable operations is Tissue-Tek® iSupport™. With the latest solution in remote monitoring, Tissue-Tek iSupport maximises the uptime of your valuable instruments while reducing your service costs.

Furthermore, the Sakura Technical Services organisation is able to detect deviations in critical parameters, proactively preventing problems from occurring.





give you more control of your budget, as costs are predictable. While we take care of your instruments, you can focus on your patients.

## Financial Solutions

*Enable your lab to benefit from the latest technology solutions*

A financial solution enables your laboratory to benefit from the latest technology solutions to deal with those issues without the need to obtain high capital investment.

A fixed periodic payment will enable Sakura to deliver you the latest instruments, consumables and service in order to easily deal with the increasing workloads, shortage of skilled staff and enabling turnaround times. This fixed fee puts you in control of your lab budget as you know exactly how much will be charged.

## Workflow Consultancy

*Increase the efficiency and quality of your laboratory and do more with the same resources*

The Workflow Consultancy enables your laboratory to gain more insight into the current process to identify bottlenecks and to consult on improvements.

The aim of the consultancy service is to improve the process of the histopathology laboratory by applying Lean principles. This allows you to do more with the same capacity/ resources while improving the quality of work and results.

The Workflow Consultancy consists of a one-day workflow observation. This provides the lab with information about the processes, such as utilisation rates of the workstations and current state of the material flow. The Workflow Consultancy is managed



## Sakura Services



### Financial Solutions

Our 'cost per test' and other financial services enables your laboratory to benefit from the latest technology solutions.



### Service Agreements

Our 3 levels of service ensure you of a high instrument performance and maximised uptime with predictable costs.



### User Training

Increase the quality of your laboratory results with optimal and safe use of your instruments.



### Workflow Consultancy

Increase the efficiency and quality of your laboratory and do more with the same resources.



### Express Delivery

Prevent downtime and order urgently needed consumables to have them delivered the next day.



and executed by Lean & 6 Sigma consultants, specialised in histopathology laboratories. The consultant will analyse the observations and the collected data, to identify bottlenecks and non-value adding steps in the processes. He will provide recommendations in order to maximise the productivity within your laboratory and how to best make use of staff and equipment, which allows staff to spend more time on other critical activities. The recommendations are practical and pragmatic, so you and your team can immediately start working on the quick wins.

| Item code | Description                            |
|-----------|--|
| SE-WC-001 | Workflow Consultancy                   |
| SE-WC-002 | Workflow Consultancy with presentation |

## User Training

*Increase the quality of your laboratory results with optimal and safe use of your instruments*

It has been proven that well trained people work more efficient and perform better. By regularly training your staff, you will reduce rework and increase the quality of your results.

Sakura offers on-site customer training on their instruments to optimise your results. These User Training sessions ensure that your technicians acquire in-depth knowledge of the Sakura instruments and consumables. With this knowledge they will be able to use the instruments to their fullest potential. The training is designed to enable your technicians to operate the instruments efficiently and perform regular maintenance.

## Express Delivery

*Prevent downtime and order urgently needed consumables to have them delivered the next day*

A surplus in work or unexpected shortage can increase your need for consumables. The Express Delivery service gives you the opportunity to order urgently needed products\* in small quantities throughout the day and have them delivered the next working day. If you order by 5 p.m. CET, you'll receive a next working day door-to-door delivery for a fixed fee.

### Conditions and exceptions

- Only consumables and accessories
- 20 kg measured by weight, hand carried
- Hazardous goods have a longer delivery time

This service guarantees more uptime, as there is no waiting time for the consumables and you also do not have to wait until you have a minimum order amount. In case of a shortage we make sure you receive the consumables the next working day.

If you want to reduce your stock holdings and prefer a just in time delivery method, you can use Express Delivery. This will free up space required for large stock holdings to be used for the other important activities within the lab.

| Item code    | Description                     |
|--------------|---------------------------------|
| SE-ED-001-01 | Express Delivery Germany        |
| SE-ED-001-02 | Express Delivery Denmark        |
| SE-ED-001-03 | Express Delivery Norway         |
| SE-ED-001-04 | Express Delivery Holland        |
| SE-ED-001-05 | Express Delivery Belgium        |
| SE-ED-001-06 | Express Delivery France         |
| SE-ED-001-07 | Express Delivery United Kingdom |
| SE-ED-001-08 | Express Delivery Sweden         |
| SE-ED-001-09 | Express Delivery Austria        |
| SE-ED-001-75 | Express Delivery Ireland        |
| SE-ED-001-92 | Express Delivery Italy          |
| SE-ED-001-95 | Express Delivery Spain          |
| SE-ED-001-98 | Express Delivery Portugal       |



## Sakura Services We take care of everything

With Sakura Services we will offer total solutions to our customers. These new services can help laboratories to become more efficient, reduce turnaround times and increase the quality of the laboratories results. To find out more about our services, e-mail us via [services@sakura.eu](mailto:services@sakura.eu) or contact your local Sakura representative.

---

## SMART Automation

Powered by Sakura



---

## SMART Automation maximising productivity

For more than 100 years, Sakura Finetek products have been used in histopathology laboratories around the world. To further support laboratories, Sakura offers the SMART Automation product line aimed to maximise the productivity of a laboratory. SMART Automation is the logical next step to enhance laboratory performance. Optimise your laboratory's productivity, while reporting better turnaround times using the same resources.

Millions of patients around the world have benefited from better and faster diagnoses offered by the histopathology laboratories that have implemented SMART Automation. SMART Automation results in consistent high-quality operations for all tissue samples: from biopsies to breast tissue. Automation and standardisation of routine processes eliminate errors and variations in end results, leading to consistent high-quality and reduction in rework.

Better and faster service  
to more patients using the  
same resources

### SMART Automation labs reported:

- Improved productivity by more than 30% with the same number of technicians
- Reduced time to diagnose by 67%
- 80% of the cases are ready within 24 hours
- Better control of the daily process



A scientist in a white lab coat and safety glasses is working in a laboratory. The background shows a clean, modern lab environment with stainless steel surfaces and equipment. The scientist is focused on their work, and the overall scene conveys a sense of precision and scientific inquiry.

# 1. Grossing

## Grossing Stations

Tissue-Tek® Accu-Edge® Elevating Grossing Station

Tissue-Tek® Accu-Edge® Countertop Work Station

Tissue-Tek® Accu-Edge® Pathology Work Station

## Grossing Tools System

Tissue-Tek® Accu-Edge® Grossing Board

Tissue-Tek® Accu-Edge® Grossing Forks

Tissue-Tek® FormaGO®

## Grossing & Trimming

Tissue-Tek® Accu-Edge® Trimming Knife Series

Tissue-Tek® Accu-Edge® AutopsyKnife Series

Tissue-Tek® Accu-Edge® Dissecting Scalpel Series

Tissue-Tek® Accu-Edge® Safety Trimming Knife Handle & Blades Series

Tissue-Tek® Accu-Edge® Replaceable Blade Scissors

## Tissue-Tek® Accu-Edge® Grossing Stations



### Tissue-Tek® Accu-Edge® Grossing Stations

Tissue-Tek® Accu-Edge® Grossing Stations come in various configurations and shapes like the Elevating Grossing Station with or without hands free controls, a space saving Countertop Station or an economical Pathology Work Station.

### Tissue-Tek® Accu-Edge® Elevating Grossing Station

Constructed from high-quality stainless steel, the Tissue-Tek® Accu-Edge® Elevating Grossing Station is a floor model that stands at counter height. The Elevating Grossing Station has the ability to elevate from 81 cm to 112 cm to accommodate all lab personnel.

This Station is equipped with a vacuum breaker-protected water supply and duct directly to the building ventilation system. Other standard features include ½ 3,7 kW disposal, polyethylene dissecting board, magnetic instrument holder, dissecting area rinse, shelving, and a spray hose assembly.

### Tissue-Tek® Accu-Edge® Countertop Work Station

The Countertop Work Station is available with two duct options: ducting either to an outside ventilation source or by using the self-contained ventilation system with replaceable filters. Other standard features include integral sink with mixing faucet, easily accessible control panel, ample lighting, formalin container with spigot, C-fold paper towel holder, magnetic instrument holder, and a polyethylene dissecting board.

### Tissue-Tek® Accu-Edge® Pathology Work Station

The Tissue-Tek® Accu-Edge® Pathology Work Station can be customised by allowing the ability to choose from the standard base leg assembly or the base leg assembly with cabinet. The Tissue-Tek Accu-Edge Pathology Work Station is in the same way equipped as the Tissue-Tek Accu-Edge Countertop Work Station with an included large working space.

| Item code | Description   |
|-----------|---|
| 0305      | Tissue-Tek® Accu-Edge® Elevating Grossing Station with Infrared Controls        |
| 0306      | Tissue-Tek® Accu-Edge® Elevating Grossing Station without Infrared Controls     |
| 0307      | Tissue-Tek® Accu-Edge® Non-elevating Grossing Station with Infrared Controls    |
| 0308      | Tissue-Tek® Accu-Edge® Non-elevating Grossing Station without Infrared Controls |
| 0310      | Tissue-Tek® Accu-Edge® Countertop Work Station                                  |
| 0315      | Tissue-Tek® Accu-Edge® Pathology Work Station                                   |
| 0120      | Tissue-Tek® Accu-Edge® Base Leg Assembly (for item 0310 & 0315)                 |
| 0121      | Tissue-Tek® Accu-Edge® Base Leg Assembly with Cabinet (for item 0310 & 0315)    |
| 0337      | Tissue-Tek® Accu-Edge® PathPRO™ Grossing Station, Elevating                     |
| 0338      | Tissue-Tek® Accu-Edge® PathPRO™ Grossing Station, Non-elevating                 |
| 0150      | Tissue-Tek® Accu-Edge® Camera Mount Facility                                    |
| 0152      | Tissue-Tek® Accu-Edge® Cassette Holders   |
| 0164      | Tissue-Tek® Accu-Edge® Eyewash Assembly (FO)*                                   |
| 0169      | Tissue-Tek® Accu-Edge® Filter Activated Carbon                                  |
| 0170      | Tissue-Tek® Accu-Edge® Flammable Storage Cabinet (FO)*                          |
| 0175      | Tissue-Tek® Accu-Edge® Forms Holder   |
| 0176      | Tissue-Tek® Accu-Edge® Full Perimeter Rinse (FO)*                               |
| 0177      | Tissue-Tek® Accu-Edge® Glove Box holder   |
| 0190      | Tissue-Tek® Accu-Edge® Monitor & Keyboard Stand                                 |
| 0201      | Tissue-Tek® Accu-Edge® Ruler Removable (FO)*                                    |
| 0203      | Tissue-Tek® Accu-Edge® Scale Economy Grade                                      |
| 0204      | Tissue-Tek® Accu-Edge® Scale Digital  |
| 0205      | Tissue-Tek® Accu-Edge® Seismie Anchoring Kit                                    |
| 0206      | Tissue-Tek® Accu-Edge® Shelving/Cabinets, Stainless Steel (FO)*                 |
| 0207      | Tissue-Tek® Accu-Edge® Side Splashes  |
| 0208      | Tissue-Tek® Accu-Edge® Splash Shield, Plexiglas                                 |
| 0215      | Tissue-Tek® Accu-Edge® Trash Container, Ventilated (FO)*                        |
| 0217      | Tissue-Tek® Accu-Edge® Utility Drawer (FO)*                                     |
| 0219      | Tissue-Tek® Accu-Edge® Valve Air (FO)*  |
| 0220      | Tissue-Tek® Accu-Edge® Valve Gas (FO)*  |
| 0224      | Tissue-Tek® Accu-Edge® Video Camera Arm   |
| 0226      | Tissue-Tek® Accu-Edge® Video or Dictation Mounts                                |

| Item code | Description  |
|-----------|--|
| 0228      | Tissue-Tek® Accu-Edge® Voice-Activated Dictation                           |
| 0230      | Tissue-Tek® Accu-Edge® Writing Platform, Pull-Out (FO)*                    |
| 0390      | Tissue-Tek® Accu-Edge® Ventilation Assembly, Self-Contained                |
| 0354      | Tissue-Tek® Accu-Edge® Disposal, 0.65 HP                                   |
| 0372      | Tissue-Tek® Accu-Edge® Formalin Dispense/Collect System                    |
| 0379      | Tissue-Tek® Accu-Edge® Infrared Control, Hands-Free, Hot/Cold Water        |
| 0380      | Tissue-Tek® Accu-Edge® Infrared Control, Hands-Free, Disposal              |
| 0381      | Tissue-Tek® Accu-Edge® Infrared Control, Hands-Free, Dissecting Area Rinse |
| 0386      | Tissue-Tek® Accu-Edge® Magnifier Light, Deck Mount                         |
| 0388      | Tissue-Tek® Accu-Edge® Microphone on Flex Arm                              |
| 0392      | Tissue-Tek® Accu-Edge® X-Ray Illuminator                                   |

\*(FO) Factory Option

Contact your local distributor for availability

## Tissue-Tek® Accu-Edge® Grossing Tools Systems



### Tissue-Tek® Accu-Edge® Grossing Tools System

The Tissue-Tek® Accu-Edge® Grossing Tools System will allow you to consistently and easily obtain tissue samples that have a controlled and uniform thickness. This method of standardised grossing enables consistent quality in tissue processing.

### Tissue-Tek® Accu-Edge® Grossing Tools offer you:

- Consistent and standardised grossing, resulting in the best processing results
- Tools are easy to clean and decontaminate, minimising risk of contamination by the tissue

### Tissue-Tek® Accu-Edge® Grossing Board

Tissue-Tek® Accu-Edge® Grossing Boards are working surfaces with easily adjustable wells that allow tissue thickness and size to be standardised. The wells can be individually adjusted from 1.5 mm to 3.0 mm. Accu-Edge Grossing Boards can be used as a stand-alone grossing area or on your current grossing bench.

With Tissue-Tek Accu-Edge Grossing Boards, you are just a few steps away from the perfect sample:

- Calibrate the well at the required depth
- Position the tissue in the well
- Place the tamper on the tissue
- Gross it at the desired thickness

### Tissue-Tek® Accu-Edge® Grossing Forks

Tissue-Tek® Accu-Edge® Grossing Forks are designed for hollow organs or specimens with layers and are available in three sizes: 1,5 mm, 2,0 mm and 2,5 mm. Each fork has two set of tines; the distance between the tines determines the size of the fork.

Tissue-Tek Accu-Edge Grossing Forks hold the tissue in surfaces of the fork, resulting in a section of the desired thickness between the tines.

| Item code | Description  |
|-----------|--|
| 4800      | Tissue-Tek® Accu-Edge® Grossing Board Board (43 x 29 x 3 cm) |
| 4802      | Tissue-Tek® Accu-Edge® Grossing Wells (34 x 9 x 3 cm)        |
| 4803      | Tissue-Tek® Accu-Edge® Grossing Fork 1.5 mm                  |
| 4804      | Tissue-Tek® Accu-Edge® Grossing Fork 2.0 mm                  |
| 4807      | Tissue-Tek® Accu-Edge® Grossing Fork 2.5 mm                  |
| 4814      | Tissue-Tek® Accu-Edge® Cleaning Brush; 10/pcs                |
| 4846      | Tissue-Tek® Accu-Edge® Tamper Set (Large + Small)            |
| 4847      | Tissue-Tek® Accu-Edge® Gauge Set                             |



### Tissue-Tek® FormaGO® Formalin Safety System

The Tissue-Tek FormaGO Formalin Safety System includes products that protect your staff and the environment from the hazardous effects of formalin. Sakura developed this new product line to improve performance, reliability and convenience in handling formalin, with the safety of our valued customers and the environment in mind.

| Item code | Description  |
|-----------|--|
| 9151      | Tissue-Tek® FormaGO® Formalin Neutraliser            |
| 9154      | Tissue-Tek® FormaGO® Formalin Absorption Wipes       |
| 9157      | Tissue-Tek® FormaGO® Formalin Absorption Pads, Large |
| 9158      | Tissue-Tek® FormaGO® Formalin Absorption Granules    |

## Tissue-Tek® Accu-Edge®

### Grossing & Trimming



#### Tissue-Tek® Accu-Edge® Trimming Knife Series

The Tissue-Tek® Accu-Edge® Trimming Knife Series features four sturdy handles designed to hold your choice of three possible blade lengths. These specially designed handles and blades provide an extremely sharp knife for a wide variety of grossing requirements. Advanced design enables quick, easy blade removal and replacement. The F80 and F80-mini are used with Accu-Edge® Disposable Microtome Blades.

| Item code | Description  |
|-----------|--|
| 1454      | Tissue-Tek® Accu-Edge® Plastic Trimming Knife Handle F80         |
| 1455      | Tissue-Tek® Accu-Edge® Trimming Knife Handle F80-mini            |
| 4785      | Tissue-Tek® Accu-Edge® Trimming Blades 130 mm; 50/pcs            |
| 4698      | Tissue-Tek® Accu-Edge® Trimming Blade 130 mm, round edge; 50/pcs |
| 4786      | Tissue-Tek® Accu-Edge® Plastic Trimming Knife Handle F130        |
| 4789      | Tissue-Tek® Accu-Edge® Trimming Blade 260 mm; 50/pcs             |
| 4790      | Tissue-Tek® Accu-Edge® Plastic Trimming Knife Handle F260        |



#### Tissue-Tek® Accu-Edge® Dissecting Scalpel Series

The Tissue-Tek® Accu-Edge® Dissecting Scalpel Series features an autoclavable, chemical resistant handle designed to hold your choice of two possible dissecting blades. The two different dissecting blades consist of a wide, curved tip (F-61) or a small, pointed tip for various applications. Advanced design enables quick, easy blade removal and replacement.

| Item code | Description  |
|-----------|--|
| 4791      | Tissue-Tek® Accu-Edge® Dissecting Scalpel Handle                           |
| 4792      | Tissue-Tek® Accu-Edge® Dissecting Scalpel Blades F61, urved Tip; 5x20/pcs  |
| 4793      | Tissue-Tek® Accu-Edge® Dissecting Scalpel Blades F62, ointed Tip; 5x20/pcs |



#### Tissue-Tek® Accu-Edge® Autopsy Knife Series

The Tissue-Tek Accu-Edge Autopsy Knife Series offers one chemical - and heat - resistant resin handle that accommodates three blade sizes. Extremely sharp autopsy blades are manufactured from quality, durable stainless steel. Blades, available in three sizes, are interchangeable with autoclavable plastic handle.

| Item code | Description  |
|-----------|--|
| 4781      | Tissue-Tek® Accu-Edge® Autopsy Knife Handle          |
| 4782      | Tissue-Tek® Accu-Edge® Autopsy Blade 100 mm; 2x5/pcs |
| 4783      | Tissue-Tek® Accu-Edge® Autopsy Blade 170 mm; 2x5/pcs |
| 4784      | Tissue-Tek® Accu-Edge® Brainblade 325 mm             |



#### Tissue-Tek® Accu-Edge® Safety Trimming Knife Handle & Blades Series

The Tissue-Tek® Accu-Edge® Safety Trimming Knife Handle combined with the Safety Trimming Blades allows quick and easy blade change, therefore providing users increased safety and comfort in their daily laboratory work. The Safety Trimming Knife Handle (4695) is very easy to hold, due to its ergonomically designed plastic handle.

| Item code | Description  |
|-----------|--|
| 4695      | Tissue-Tek® Accu-Edge® Safety Trimming Knife Handle          |
| 4696      | Tissue-Tek® Accu-Edge® Safety Trimming Blade 130 mm 1x10/pcs |
| 4697      | Tissue-Tek® Accu-Edge® Safety Trimming Blade 260 mm 1x10/pcs |





### Tissue-Tek® Accu-Edge® Replaceable Blade Scissors

The Tissue-Tek® Accu-Edge® Replaceable Blade Scissor features three disposable, easy to replace, extremely sharp blades (sharp/sharp, sharp/blunt and blunt/blunt) for a wide variety of grossing applications.

| Item code | Description  |
|-----------|--|
| 4794      | Tissue-Tek® Accu-Edge® Replaceable Blade Scissors            |
| 4795      | Tissue-Tek® Accu-Edge® Replaceable Blade: Sharp/Sharp; 5/pcs |
| 4796      | Tissue-Tek® Accu-Edge® Replaceable Blade: Sharp/Blunt; 5/pcs |
| 4797      | Tissue-Tek® Accu-Edge® Replaceable Blade: Blunt/Blunt; 5/pcs |

A woman with blonde hair and blue eyes, wearing a white lab coat, is looking towards the right. In the background, a laboratory instrument with red lights is visible. The image is split into two main sections: a white section on the left containing text, and a blue section on the right containing a photograph of the woman and laboratory equipment.

## 2. Identification

### **Multi Cassette Printer**

Tissue-Tek® AutoWrite®

### **Stacked Cassettes**

Stacks Tissue-Tek® Paraform® Frames

Stacks Tissue-Tek® Uni-Cassette®

Stacks Tissue-Tek® Embedding Cassette

# Tissue-Tek® AutoWrite® Cassette printer



## SMART Automation Powered by Sakura

### Specifications

| Throughput       |   |
|------------------|---|
| Cassette Printer | 900 cassettes per hour (automatically loading)        |
| Dimensions       |   |
| W x D x H        | 46 x 65 x 94 cm                                       |
| Weight           | 29 kg   |
| Load Capacity    |   |
| Cassette Printer | 6 magazines; 80 cassettes per magazine                |
| Unload Module    | 100 cassettes   |
| Ink Cartridge    | 60.000 cassettes or 3,5 months (whatever comes first) |
| Print Resolution | Up to 360 dpi   |
| Ink              | Reagent resistant, non-erasable                       |
| Printer Driver   | Windows®  |

## Tissue-Tek® AutoWrite® Cassette Printer

Sakura Finetek has innovated the way to print cassettes in the histology and cytology laboratory by introducing the new and improved version of the Tissue-Tek® AutoWrite®.

Start using the Tissue-Tek AutoWrite in your laboratory and experience the convenience of fully automated and reliable labelling of your cassettes... just by connecting them to a Laboratory Information Management System (LIMS) or a stand alone computer. The Windows® printer driver technology enables Tissue-Tek AutoWrite Printers to be connected to any Windows based program or LIMS.

## Tissue-Tek AutoWrite offers you:

- Unmatched printing quality with the new and improved printing system
- Different type/different colour cassettes printed simultaneously
- Two-dimensional bar coding for easy and reliable identification of cassettes
- Convenient loading with the stacked cassettes, offered in all colours and types
- Fast unloading with an unload module
- Continuous printing during the day

| Item code | Description  |
|-----------|--|
| 8030      | Tissue-Tek® AutoWrite® Cassette Printer<br>100-240 V, 50/60 Hz             |
| 8032      | Tissue-Tek® AutoWrite® Unload Station Cassette                             |
| 8038N     | Tissue-Tek® AutoWrite® Curing Lamp   |
| 8040      | Tissue-Tek® AutoWrite® Slide Magazines (3/pcs)                             |
| 8041      | Tissue-Tek® AutoWrite® Slide Bin   |
| 8042      | Tissue-Tek® AutoWrite® Cassette Magazines (3/pcs)                          |
| 8043      | Tissue-Tek® AutoWrite® Cassette Chute                                      |
| 8044      | Tissue-Tek® AutoWrite® Slide Tray (for item 8033)                          |
| 8046      | Tissue-Tek® AutoWrite® Cassette Tray (for item 8032)                       |
| 8047      | Tissue-Tek® AutoWrite® 6-magazine Slide Holder                             |
| 8048      | Tissue-Tek® AutoWrite® 6-magazine Cassette Holder                          |
| 8050      | Tissue-Tek® AutoWrite® Cleaning Foam Swaps; 25/pcs                         |
| 8051      | Tissue-Tek® AutoWrite® Ink Cartridge Kit; 280 mL                           |
| SC-8030-G | Service Agreements Tissue-Tek® AutoWrite® Cassette Printer Gold            |
| SC-8030-P | Service Agreements Tissue-Tek® AutoWrite® Cassette Printer Platinum        |
| SC-8030-S | Service Agreements Tissue-Tek® AutoWrite® Cassette Printer Silver          |
| SC-8032-G | Service Agreements Tissue-Tek® AutoWrite® Cassette Unload station Gold     |
| SC-8032-P | Service Agreements Tissue-Tek® AutoWrite® Cassette Unload station Platinum |
| SC-8032-S | Service Agreements Tissue-Tek® AutoWrite® Cassette Unload station Silver   |





| Item code | Description   |
|-----------|---|
| 8117      | Stacks Tissue-Tek® Uni-Cassette® Orange Burn; 400/pcs   |
| 8118      | Stacks Tissue-Tek® Uni-Cassette® Lilac; 400/pcs         |
| 8119      | Stacks Tissue-Tek® Uni-Cassette® Gold; 400/pcs          |
| 8120      | Stacks Tissue-Tek® Uni-Cassette® Aqua; 400/pcs          |
| 8135      | Stacks Tissue-Tek® Uni-Cassette® Red; 400/pcs           |
| 8153      | Stacks Tissue-Tek® Uni-Cassette® Tan; 400/pcs           |
| 8154      | Stacks Tissue-Tek® Uni-Cassette® Yellow; 400/pcs        |
| 8155      | Stacks Tissue-Tek® Uni-Cassette® Pink; 400/pcs          |
| 8156      | Stacks Tissue-Tek® Uni-Cassette® Green; 400/pcs         |
| 8157      | Stacks Tissue-Tek® Uni-Cassette® Blue; 400/pcs          |
| 8158      | Stacks Tissue-Tek® Uni-Cassette® Orange; 400/pcs        |
| 8170      | Stacks Tissue-Tek® Uni-Cassette® White; 400/pcs         |
| 8045      | Stacks Tissue-Tek® Uni-Cassette® Biopsy Red; 400/pcs    |
| 8086      | Stacks Tissue-Tek® Uni-Cassette® Biopsy White; 400/pcs  |
| 8087      | Stacks Tissue-Tek® Uni-Cassette® Biopsy Blue; 400/pcs   |
| 8088      | Stacks Tissue-Tek® Uni-Cassette® Biopsy Yellow; 400/pcs |
| 8089      | Stacks Tissue-Tek® Uni-Cassette® Biopsy Pink; 400/pcs   |
| 8090      | Stacks Tissue-Tek® Uni-Cassette® Biopsy Orange; 400/pcs |
| 8172      | Stacks Tissue-Tek® Uni-Cassette® Biopsy Grey; 400/pcs   |
| 8174      | Stacks Tissue-Tek® Uni-Cassette® Biopsy Green; 400/pcs  |

| Item code | Description  |
|-----------|--|
| 8125      | Stacks Tissue-Tek® Embedding Cassette Tan; 800/pcs         |
| 8126      | Stacks Tissue-Tek® Embedding Cassette Orange Burn; 800/pcs |
| 8127      | Stacks Tissue-Tek® Embedding Cassette Lilac; 800/pcs       |
| 8128      | Stacks Tissue-Tek® Embedding Cassette Gold; 800/pcs        |
| 8129      | Stacks Tissue-Tek® Embedding Cassette Aqua; 800/pcs        |
| 8179      | Stacks Tissue-Tek® Embedding Cassette Yellow; 800/pcs      |
| 8182      | Stacks Tissue-Tek® Embedding Cassette Pink; 800/pcs        |
| 8183      | Stacks Tissue-Tek® Embedding Cassette Green; 800/pcs       |
| 8184      | Stacks Tissue-Tek® Embedding Cassette Blue; 800/pcs        |
| 8185      | Stacks Tissue-Tek® Embedding Cassette Orange; 800/pcs      |
| 8187      | Stacks Tissue-Tek® Embedding Cassette White; 800/pcs       |
| 8191      | Stacks Tissue-Tek® Embedding Cassette Clear; 800/pcs       |
| 8199      | Stacks Tissue-Tek® Embedding Cassette Grey; 800/pcs        |

## Consumables, Services & Accessories Sakura IDent™

| Item code | Description   |
|-----------|---|
| 8057      | IDent™ Silk Print Ribbon                            |
| SC-8055-G | Service Agreements IDent™ Cassette Printer Gold     |
| SC-8055-P | Service Agreements IDent™ Cassette Printer Platinum |
| SC-8055-S | Service Agreements IDent™ Cassette Printer Silver   |
| SC-8056-G | Service Agreements IDent™ Slide Printer Gold        |
| SC-8056-P | Service Agreements IDent™ Slide Printer Platinum    |
| SC-8056-S | Service Agreements IDent™ Slide Printer Silver      |



# 3. Tissue Processing

## Continuous Rapid Tissue Processor

Tissue-Tek Xpress® x120

## Vacuum Infiltration Processors

Tissue-Tek VIP® 6 AI

Histo-Tek® VP1™

## Tissue-Tek® Tissue Clear® Xylene Substitute

## Tissue-Tek® Paraffin Wax

## Tissue-Tek Xpress® x120

### Continuous Rapid Tissue Processor



### SMART Automation

Powered by Sakura

#### Specifications

|                           |   |
|---------------------------|---|
| <b>Throughput</b>         | Up to 120 specimens per hour  |
| <b>Dimensions</b>         | W x D x H) 170 x 71 x 163 cm  |
| <b>Weight</b>             | 460 kg  |
| <b>Retorts</b>            |   |
| Load station              | 1 station   |
| Microwave stations        | 2 retorts   |
| Vacuum stations           | 2 retorts   |
| Unload stations           | 2 stations  |
| <b>Capacity</b>           |   |
| Continuous loading        | Up to 40 cassettes, every 20 minutes  |
| Unloading capacity        | Up to 80 cassettes  |
| Processing time           | 60 minutes (standard) or<br>120 minutes (extended)  |
| <b>Temperature Ranges</b> |   |
| Microwave stations        | 61°C 2°C  |
| Vacuum stations           | 65°C 2°C  |
| Display                   | 800 x 600 pixel colour touch screen<br>LCD display  |
| <b>Software</b>           | Process Monitor Screen  |
|                           | Manual and Auto start   |
|                           | Reagent Management System with<br>counter for cassette or runs standard<br>(1 hour) or extended (2 hours) program |

### Tissue-Tek Xpress® x120

#### Continuous Rapid Tissue Processor

The advanced automation of the Tissue-Tek Xpress® Continuous Rapid Tissue Processor continues with the next generation of the Xpress platform: the only rapid tissue processor that actually speeds up the process. With the improved reagent system, enhanced QC possibilities and software options, the histopathology laboratory will achieve new levels of speed in processing, with an hourly throughput of up to 120 specimens. The Xpress x120 uses an innovative, low-wattage microwave technology, improved, molecular-friendly reagents and traditional vacuum infiltration techniques to provide consistent, superior results in record time. The speed and continuous throughput of the Tissue-Tek Xpress® x120 allow an even distribution of cases throughout the day, making workloads more manageable. Specimen slides now make their way to the pathologist faster than ever, enabling same-day diagnosis and thus drastically reducing patient stay and anxiety.

In addition, the process without formalin and xylene employed by the Tissue-Tek Xpress x120 adds a crucial advantage to the field of molecular pathology. The Tissue-Tek Xpress x120 reagents preserve DNA, RNA and proteins in the paraffin block, eliminating the need to use fresh tissue for molecular studies. The reagents provide excellent morphology, sharp nuclear detail and crisp cellular images equal to or better than conventional tissue processing. Compatible with special staining and immunohistochemistry methods, these reagents can often eliminate the need for antigen retrieval.

### The Tissue-Tek Xpress x120 is the only platform offering you:

- Consistent processing in 1 hour
- An efficient, manageable, continuous workflow
- Same day results by real reduction of turn-around time
- Reduction of reagent usage up to 80%
- Formalin- and xylene-free fixation and processing

### Tissue-Tek® iSupport™

Powered by Sakura

| Item code | Description                                |
|-----------|--|
| 8022      | License Tissue-Tek® iSupport™              |
| 8023      | License Tissue-Tek® iSupport™ (extra user) |



#### Item code Description

|      |   |
|------|---|
| 7720 | Tissue-Tek Xpress® x120 Continuous Rapid Tissue Processor 115 V, 50/60 Hz |
| 7721 | Tissue-Tek Xpress® x120 Continuous Rapid Tissue Processor 100 V, 50/60 Hz |
| 7722 | Tissue-Tek Xpress® x120 Continuous Rapid Tissue Processor 230 V, 50/60 Hz |

#### Item code Description

|             |   |
|-------------|---|
| 7103        | Tissue-Tek Xpress® 40-Cassette Basket with Handle and Lid         |
| 7104        | Tissue-Tek Xpress® 40-Cassette Basket Lid                         |
| 7106        | Tissue-Tek Xpress® Tray Liners; 100/pcs                           |
| 7107        | Tissue-Tek Xpress® Activated Carbon Filter for x120               |
| 6160        | Tissue-Tek Xpress® Activated Carbon Filter for x50                |
| 7108        | Tissue-Tek Xpress® Loading Station Container with Lid             |
| 7109        | Tissue-Tek Xpress® Basket Transportation Tray                     |
| 7115        | Tissue-Tek Xpress® Pre-Processing Solution                        |
| 7120        | Tissue-Tek Xpress® Molecular Fixative                             |
| 7730        | Tissue-Tek Xpress® x120 Reagent Set; 4/pcs                        |
| 7760        | Tissue-Tek Xpress® x50 Reagent Set; 2/pcs                         |
| 1550        | Tissue-Tek® Scraper, large  |
| 4800        | Tissue-Tek® Accu-Edge® Grossing Board (43 x 29 x 3 cm)            |
| 4802        | Tissue-Tek® Accu-Edge® Grossing Wells (34 x 9 x 3 cm)             |
| 4803        | Tissue-Tek® Accu-Edge® Grossing Fork 1.5 mm                       |
| 4804        | Tissue-Tek® Accu-Edge® Grossing Fork 2.0 mm                       |
| 4807        | Tissue-Tek® Accu-Edge® Grossing Fork 2.5 mm                       |
| 4814        | Tissue-Tek® Accu-Edge® Cleaning Brush                             |
| 4846        | Tissue-Tek® Accu-Edge® Tamper Set (Large + Small)                 |
| 4847        | Tissue-Tek® Accu-Edge® Gauge Set                                  |
| 4223        | Tissue-Tek® Biopsy Bags (30 x 50 mm); 1.000/pcs                   |
| 4224        | Tissue-Tek® Biopsy Bags (45 x 65 mm); 500/pcs                     |
| 4785        | Accu-Edge® Trimming Blade 130 mm                                  |
| 4786        | Accu-Edge® Trimming Knife Handle 130 mm                           |
| 4791        | Tissue-Tek® Accu-Edge® Dissecting Scalpel Handle                  |
| 4792        | Tissue-Tek® Accu-Edge® Dissecting Scalpel Blades F61, Curved Tip  |
| 4793        | Tissue-Tek® Accu-Edge® Dissecting Scalpel Blades F62, Pointed Tip |
| SA-7722-UT  | User Training Tissue-Tek Xpress® x120                             |
| SA-7722P-UT | User Training Tissue-Tek Xpress® x120 including Paraform          |
| SC-7722-G   | Service Agreements Tissue-Tek Xpress® x120 Gold                   |
| SC-7722-P   | Service Agreements Tissue-Tek Xpress® x120 Platinum               |
| SC-7722-S   | Service Agreements Tissue-Tek Xpress® x120 Silver                 |

## Tissue-Tek VIP® 6 AI Vacuum Infiltration Processor



### Specifications

|                        |   |
|------------------------|---|
| <b>Capacity</b>        | Up to 300 cassettes                                     |
| <b>Dimensions</b>      |   |
| Dimensions (W x D x H) | 61 x 68 x 133 cm  |
| Weight                 | 175 kg  |
| Reagent Reservoirs     | 13 (including waste and cleaning)                       |
| Bulk Reservoirs        | 2 fixed (10.8 L each)                                   |
| Paraffin Reservoirs    | 4   |
| Waste Containers       | 2 (1 reagent and 1 paraffin wax)                        |
| Reagent Management     |   |
| System                 | 3 reagents including paraffin wax                       |
| Level Sensors          | 4 (150-cassettes, 300-cassettes, cleaning and overfill) |
| Display                | Colour Touch Screen                                     |

### Tissue-Tek® iSupport™ Powered by Sakura

#### Item code Description

|      |  |
|------|--|
| 8022 | License Tissue-Tek® iSupport™              |
| 8023 | License Tissue-Tek® iSupport™ (extra user) |

### Tissue-Tek VIP® 6 AI Vacuum Infiltration Processor

With the new reagent management system, Sakura sets new standards for reliability, safety and convenience in traditional tissue processing, with the provision of the 6th generation of market leading Tissue-Tek VIP® technology.

With the Reagent Management System, including 10.8L bulk containers, reagent and paraffin transfer, automated paraffin wax disposal, a solution manager and true intuitive software, Sakura continues to exceed what you expect from the latest generation traditional tissue processors by making the system easier to use, with increased user safety whilst not compromising on high quality processing and reliability.

The addition of unmatched features, to the most reliable traditional tissue processor, will give increased value to the process and operations of your laboratory.

### The Tissue-Tek VIP 6 AI Vacuum Infiltration Processor offers you:

- Confidence of gold standard technology
- Validated protocols providing results of ultimate quality
- Exceptional patient-sample and staff safety
- Outstanding reliability and longevity

#### Item code Description

|      |  |
|------|--|
| 6040 | Tissue-Tek VIP® 6 AI 100 V, 50/60 Hz                           |
| 6041 | Tissue-Tek VIP® 6 AI 115 V, 50/60 Hz                           |
| 6042 | Tissue-Tek VIP® 6 AI 230 V, 50/60 Hz                           |
| 1550 | Tissue-Tek® Scraper, Large                                     |
| 6034 | Tissue-Tek® Scraper, Small                                     |
| 5265 | Tissue-Tek VIP® 150- Cassette Basket with Dividers and Handles |
| 5266 | Tissue-Tek VIP® 75- Cassette Basket with Dividers and Handles  |
| 5267 | Tissue-Tek VIP® 150- Cassette Baskets with Dividers            |
| 5268 | Tissue-Tek VIP® 75- Cassette Baskets with Dividers             |
| 5269 | Tissue-Tek VIP® Basket Handles for 150- Cassette Basket (5267) |
| 5270 | Tissue-Tek VIP® Basket Handles for 75- Cassette Basket (5268)  |
| 6035 | Tissue-Tek VIP® Reagent Bottle, Complete, 1/pcs                |
| 6036 | Tissue-Tek VIP® 1 Set of Bottle Labels, 10/pcs                 |
| 6045 | Tissue-Tek VIP® 1 Set of Paraffin Waste Bags, 12/pcs           |





#### Item code Description

|      |  |
|------|--|
| 6160 | Tissue-Tek VIP® Activated Carbon Filter, 2/pcs |
| 7109 | Tissue-Tek VIP® Basket Transportation Tray     |

|            |  |
|------------|--|
| SA-6042-UT | User Training Tissue-Tek VIP® 6 AI               |
| SC-6042-G  | Service Agreements Tissue-Tek VIP® 6 AI Gold     |
| SC-6042-P  | Service Agreements Tissue-Tek VIP® 6 AI Platinum |
| SC-6042-S  | Service Agreements Tissue-Tek VIP® 6 AI Silver   |

### Consumables & Accessories Tissue-Tek VIP®

#### Item code Description

|      |  |
|------|--|
| 4663 | Tissue-Tek VIP® K-series Activated Carbon Filter           |
| 4899 | Tissue-Tek VIP® E-series/5 Activated Carbon Cartridge      |
| 5264 | Tissue-Tek VIP® 5 Basket Transport Tray                    |
| 5271 | Tissue-Tek VIP® 5 Basket Dividers Set                      |
| 5272 | Tissue-Tek VIP® 5 Reagent Bottle Complete with Attachments |
| 5273 | Tissue-Tek VIP® 5 Etikettenaufkleber/Behälter              |
| 5274 | Tissue-Tek VIP® 5 Paraffin Container                       |
| 5275 | Tissue-Tek VIP® 5 Displacement Blocks                      |



# Histo-Tek® VP1™

## Vacuum Infiltration Processor



### Histo-Tek® VP1™ Vacuum Infiltration Processor

Sakura Finetek has been providing high quality and reliable tissue processing for more than 50 years, worldwide. The Histo-Tek® VP1™ uses Sakura's know-how to give users high quality tissue processing simply and safely.

| Item code | Description  |
|-----------|--|
| 1700      | Histo-Tek® VP1™; 100V, 50/60HZ                                 |
| 1550      | Tissue-Tek® Scraper, large                                     |
| 1705      | Tissue-Tek VIP® Complete reagent bottle, 12 each               |
| 1706      | Tissue-Tek VIP® Basket with handle (150 cassette size), 2 each |
| 7109      | Tissue-Tek VIP® Basket transport tray, 1 each                  |
| 6160      | Tissue-Tek VIP® Activated carbon filter, 2/case, 1 set         |

| Optional accessories |   |
|----------------------|---|
| 6506                 | Tissue-Tek® Duct hose set (38mm OD), 1 each |
| 6507                 | Tissue-Tek® Duct hose set (75mm OD), 1 each |

Contact your local distributor for availability

#### Product specifications

|                        |                                       |
|------------------------|---------------------------------------|
| Capacity               | Maximum 300 cassettes                 |
| Dimensions (W x D x H) | 55 x 60 x 133 cm                      |
| Weight                 | 130 kg                                |
| Reagent reservoirs     | 12 (including waste and cleaning)     |
| Paraffin reservoirs    | 4                                     |
| Fume control           | Activated carbon filter and condenser |
| Mixing                 | Pump-in and pump-out                  |
| Screen                 | 10.4 inch color LCD, touch screen     |
| Program memory         | 10 user-defined programs              |
| Password protection    | 3 levels                              |



## Tissue-Tek® Tissue-Clear® Xylene Substitute



Tissue-Tek® Tissue-Clear® is a xylene substitute, which differs by not irritating skin or mucosa and being odorless. Furthermore its low risk of igniting makes it safer to work with. Tissue-Tek Tissue-Clear is compatible with Tissue-Tek® Glas™ Tissue-Mount™ for glass coverslipping.

| Item code | Description                                       |
|-----------|---|
| 1426      | Tissue-Tek® Tissue-Clear® 10 L Xylene Substitute  |
| 1466      | Tissue-Tek® Tissue-Clear® 5 L Xylene Substitute   |
| 1472      | Tissue-Tek® Tissue-Clear® 200 L Xylene Substitute |

## Tissue-Tek® Paraffin Wax



The range of Tissue-Tek® Paraffin Wax consists of high quality products, is available in various types, packing sizes and temperature ranges, and is 100% DMSO-free. All Tissue-Tek Paraffin Waxes outperform other waxes on shrinkage, immersion and cutting results.

| Item code | Description   |
|-----------|---|
| 4653      | Tissue-Tek® Paraffin Wax TEK II, 1x10 kg, 54 - 57 °C                  |
| 4656      | Tissue-Tek® Paraffin Wax TEK II, 4 x 2,5 kg, 54 - 57 °C               |
| 4659      | Tissue-Tek® Paraffin Wax TEK II, 1 x 25 kg, 54 - 57 °C                |
| 4508      | Tissue-Tek® Paraffin Wax TEK III, 25 kg, 54 - 57 °C                   |
| 4509      | Tissue-Tek® Paraffin Wax TEK III, 10 kg, 54 - 57 °C                   |
| 4511      | Tissue-Tek® Paraffin Wax TEK III, 4 x 2,5 kg, 54 - 57 °C              |
| 4523      | Tissue-Tek® Paraffin Wax TEK IV, 4 x 2.5 kg, 54 - 57 °C               |
| 4524      | Tissue-Tek® Paraffin Wax TEK IV, 1 x 10 kg 54 - 57 °C                 |
| 4525      | Tissue-Tek® Paraffin Wax TEK IV, 1 x 25 kg, 54 - 57 °C                |
| 7052      | Tissue-Tek® Paraform® Processing/ Embedding Medium 8 x 1 kg, 56-58 °C |

## TDE™ 30 Decalcifier System

| Item code | Description                           |
|-----------|---------------------------------------|
| 1428      | Reagent TDE™ 30 Decalcifier           |
| 1460      | Electrodes TDE™ 30 Decalcifier; 2/pcs |



## 4. Tissue Embedding

### **Automated Embedding System**

Tissue-Tek AutoTEC® a120

Tissue-Tek® Paraform® Cassettes

Tissue-Tek® Paraform® Tissue Orientation Gels

### **Tissue Embedding Console System**

Tissue-Tek® TEC™ 5

Tissue-Tek® TEC™ Plus Cryo Console

### **Tissue-Tek® Cassettes**

### **Tissue-Tek® Biopsy Bags**

### **Tissue-Tek® Base Mold System**

## Tissue-Tek AutoTEC® a120 & Tissue-Tek® Paraform® Automated Embedding System and Sectionable Cassette System



### SMART Automation Powered by Sakura

#### Specifications

|                           |   |
|---------------------------|---|
| <b>Throughput</b>         | Up to 120 Tissue-Tek® Paraform® cassettes per hour        |
| <b>Dimensions</b>         |   |
| W x D x H                 | 120 x 75 x 175 cm   |
| <b>Weight</b>             | 530 kg  |
| <b>Number of Stations</b> |   |
| Load                      | 4 magazines   |
| Unload                    | 4 magazines   |
| <b>Base Molds</b>         |   |
|                           | 8 Tissue-Tek® Paraform® Standard Cassettes                |
|                           | 8 Tissue-Tek® Paraform® Biopsy/ Orientation Cassettes     |
|                           | 8 Tissue-Tek® Paraform® 13 x 13 Biopsy Cassettes          |
| <b>Capacity</b>           |   |
| Loading                   | 120 Tissue-Tek Paraform Cassettes, continuously loading   |
| Unloading                 | 120 Tissue-Tek Paraform Cassettes, continuously unloading |
| Paraffin wax              | Up to 5,0 L   |
| <b>Temperature</b>        |   |
| Paraffin Wax              | 60 - 70 °C (1°C increments)                               |

### Tissue-Tek AutoTEC® a120 Automated Embedding System

The Tissue-Tek AutoTEC® a120 Automated Embedding System is the synonym for real automation. Combined with the unique Tissue-Tek® Paraform® Sectionable Cassette System and Tissue-Tek® Paraform® Tissue Orientation Gels, it provides a complete system to automate your embedding. Automated embedding can solve staffing problems, eliminate orientation errors and prevent the loss of tissue samples throughout the process.

The Tissue-Tek AutoTEC a120 can embed 120 Tissue-Tek Paraform Cassettes per hour. It is a real workhorse, creating a gentle working environment in the histopathology laboratory, and fits perfectly with the revolutionary, continuous rapid tissue processor, Tissue-Tek Xpress® x120.



### The Tissue-Tek AutoTEC a120 Automated Embedding System and Tissue-Tek Paraform Sectionable Cassette System offer you:

- The system to fully automate your embedding
- Locked orientation from grossing through sectioning
- Continuous loading of your blocks after processing
- A throughput of 120 blocks per hour, matching the capacity of the Tissue-Tek Xpress x120

| Item code | Description  |
|-----------|--|
| 7090      | Tissue-Tek AutoTEC® a120 Automated Embedding System; 100 V, 50/60 Hz |
| 7093      | Tissue-Tek AutoTEC® a120 20-Cassette Magazine; 6/pcs                 |
| 7094      | Tissue-Tek AutoTEC® a120 Cassette Magazine Retainer; 4/pcs           |
| 7095      | Tissue-Tek AutoTEC® a120 Output Door; 2/pcs                          |
| 7062      | Tissue-Tek AutoTEC® a120 Paraffin Inner Tray #1; 1 each              |







## Tissue-Tek® Paraform® Sectionable Cassette System

The novel, innovative Tissue-Tek® Paraform® Sectionable Cassette System eliminates the need to perform manual steps at the embedding centre. Using Tissue-Tek Paraform in combination with the Tissue-Tek AutoTEC Automated Embedding System allows the automation of the time consuming, manual process of embedding. The unique Tissue-Tek Paraform Cassette System consists of an outer frame that is compatible with all commercially available cassette printers and microtome chucks, and an inner cassette, which is made of Paraform material. The cassette preserves the orientation of the tissue sample from grossing through sectioning, eliminating the risk of orientation errors or losing tissue samples. A unique feature of Tissue-Tek Paraform is that it is easy to section, just like paraffin wax.

The Tissue-Tek Paraform Cassette is compatible with all existing laboratory methods and manual embedding processes. In addition, it can accommodate a variety of specimens, even those requiring special orientation (e.g. skin or arterial specimens), in one of the three available cassette types: Standard, Biopsy and Biopsy 13 x 13.

| Item code   | Description  |
|-------------|--|
| 7063        | Tissue-Tek AutoTEC® <i>a120</i> Paraffin Inner Tray #2; 2/pcs    |
| 7052        | Tissue-Tek® Paraform® Processing/Embedding Medium; 8 x 1 kg      |
| 7005        | Tissue-Tek AutoTEC® 32-Cassette Magazine (for VIP®), 4/cs        |
| 7006        | Tissue-Tek AutoTEC® 20-Cassette Magazine (for Xpress®), 4/cs     |
| 7007        | Tissue-Tek AutoTEC® Magazine Handle, 6/cs                        |
| 7008        | Tissue-Tek AutoTEC® Output Door, 2/cs                            |
| 7010        | Tissue-Tek AutoTEC® Disposable Paraffin Trough, 12/cs            |
| 7013        | Tissue-Tek AutoTEC® Seismic Anchorage Kit                        |
| SA-7090-UT  | User Training Tissue-Tek AutoTEC® <i>a120</i>                    |
| SA-7090P-UT | User Training Tissue-Tek AutoTEC® <i>a120</i> including Paraform |
| SC-7090-G   | Service Agreements Tissue-Tek AutoTEC® <i>a120</i> Gold          |
| SC-7090-P   | Service Agreements Tissue-Tek AutoTEC® <i>a120</i> Platinum      |
| SC-7090-S   | Service Agreements Tissue-Tek AutoTEC® <i>a120</i> Silver        |

## Tissue-Tek® iSupport™ Powered by Sakura

| Item code | Description                                |
|-----------|--|
| 8022      | License Tissue-Tek® iSupport™              |
| 8023      | License Tissue-Tek® iSupport™ (extra user) |

| Item code | Description  |
|-----------|--|
| 7015      | Tissue-Tek® Paraform® Cassette Tamper                  |
| 7019      | Tissue-Tek® Paraform® 13 x 13 Biopsy Cassette; 500/pcs |
| 7020      | Tissue-Tek® Paraform® Biopsy Cassette; 500/pcs         |
| 7021      | Tissue-Tek® Paraform® Standard Cassette; 500/pcs       |
| 7026      | Tissue-Tek® Paraform® Foam inserts; 500/pcs            |
| 7030      | Tissue-Tek® Paraform® Frames Aqua; 500/pcs             |
| 7031      | Tissue-Tek® Paraform® Frames Blue; 500/pcs             |
| 7032      | Tissue-Tek® Paraform® Frames Grey; 500/pcs             |
| 7033      | Tissue-Tek® Paraform® Frames Gold; 500/pcs             |
| 7034      | Tissue-Tek® Paraform® Frames Green; 500/pcs            |
| 7035      | Tissue-Tek® Paraform® Frames Lilac; 500/pcs            |
| 7036      | Tissue-Tek® Paraform® Frames Orange; 500/pcs           |
| 7037      | Tissue-Tek® Paraform® Frames Pink; 500/pcs             |
| 7038      | Tissue-Tek® Paraform® Frames Red; 500/pcs              |
| 7039      | Tissue-Tek® Paraform® Frames Tan; 500/pcs              |
| 7040      | Tissue-Tek® Paraform® Frames White; 500/pcs            |
| 7041      | Tissue-Tek® Paraform® Frames Yellow; 500/pcs           |



| Item code | Description   |
|-----------|---|
| 7070      | Stacks Tissue-Tek® Paraform® Frames Aqua; 400/pcs   |
| 7071      | Stacks Tissue-Tek® Paraform® Frames Blue; 400/pcs   |
| 7072      | Stacks Tissue-Tek® Paraform® Frames Grey; 400/pcs   |
| 7073      | Stacks Tissue-Tek® Paraform® Frames Gold; 400/pcs   |
| 7074      | Stacks Tissue-Tek® Paraform® Frames Green; 400/pcs  |
| 7075      | Stacks Tissue-Tek® Paraform® Frames Lilac; 400/pcs  |
| 7076      | Stacks Tissue-Tek® Paraform® Frames Orange; 400/pcs |
| 7077      | Stacks Tissue-Tek® Paraform® Frames Pink; 400/pcs   |
| 7078      | Stacks Tissue-Tek® Paraform® Frames Red; 400/pcs    |
| 7079      | Stacks Tissue-Tek® Paraform® Frames Tan; 400/pcs    |
| 7080      | Stacks Tissue-Tek® Paraform® Frames White; 400/pcs  |
| 7081      | Stacks Tissue-Tek® Paraform® Frames Yellow; 400/pcs |



### Tissue-Tek® Paraform® Tissue Orientation Gels

The Tissue-Tek® Paraform® Tissue Orientation Gels are hydrogels, specially designed for the orientation of tissue specimens prior of automatic embedding with the Tissue-Tek AutoTEC a120.

Tissue-Tek Paraform Tissue Orientation Gels can be inserted into a Tissue-Tek® Paraform® Biopsy Cassette (7020). Each Gel holds one or more small human or animal tissue specimens and maintains the orientation of the tissue during processing and embedding.

| Item code | Description   |
|-----------|---|
| 7015      | Tissue-Tek® Paraform® Cassette Tamper                   |
| 7019      | Tissue-Tek® Paraform® 13 x 13 Biopsy Cassette; 500/pcs  |
| 7020      | Tissue-Tek® Paraform® Biopsy Cassette; 500/pcs          |
| 7021      | Tissue-Tek® Paraform® Standard Cassette; 500/pcs        |
| 7045      | Tissue-Tek® Paraform® Biopsy Gels; 10 x 50pcs           |
| 7046      | Tissue-Tek® Paraform® 2-Lane Gels; 10 x 50pcs           |
| 7047      | Tissue-Tek® Paraform® 1-mm Punch Gels; 10 x 50pcs       |
| 7048      | Tissue-Tek® Paraform® 2-mm Punch Gels; 10 x 50pcs       |
| 7049      | Tissue-Tek® Paraform® 3-mm Punch Gels; 10 x 50pcs       |
| 7026      | Tissue-Tek® Paraform® Foam Inserts; 500/pcs             |
| 7055      | Tissue-Tek® Paraform® Standard Base Mold; 12/pcs        |
| 7056      | Tissue-Tek® Paraform® Biopsy Base Mold; 12/pcs          |
| 7057      | Tissue-Tek® Paraform® Biopsy 13 x 13 Base Mold; 12/pcs  |
| 7089      | Accu-Edge® Paraform® Disposable Microtome Blade; 50/pcs |

## Tissue-Tek® TEC™ 5

### Tissue Embedding Console System



#### Specifications

##### Dimensions

|                   |                 |
|-------------------|-----------------|
| Embedding Console | 59 x 62 x 38 cm |
| Cryo Console      | 33 x 59 x 38 cm |
| Cooling Plate     | 31 x 38 cm      |

##### Weight

|                   |       |
|-------------------|-------|
| Embedding Console | 20 kg |
| Cryo Console      | 20 kg |

##### Capacity

|                  |              |
|------------------|--------------|
| Paraffin Chamber | 4 L          |
| Thermal Chambers | 1.8 L        |
| Cooling Plate    | 60 cassettes |

##### Temperature Range

|                            |             |
|----------------------------|-------------|
| Paraffin Chamber           | 50°C - 70°C |
| Thermal Chambers           | 50°C - 70°C |
| Hot Plates & Forceps Wells | 50°C - 70°C |
| Cooling Plate              | -10°C - 0°C |

#### Item code Description

|      |  |
|------|--|
| 5100 | Tissue-Tek® TEC™ 5 Tissue Embedding Console System; 115 V, 60 Hz |
| 5229 | Tissue-Tek® TEC™ 5 Tissue Embedding System; 230 V, 50 Hz         |

|      |   |
|------|---|
| 1550 | Tissue-Tek® Scraper                         |
| 1551 | Tissue-Tek® Large Tamper                    |
| 1552 | Tissue-Tek® TEC™ Small Tamper               |
| 1553 | Tissue-Tek® TEC™ Lamp Bulb                  |
| 5781 | Tissue-Tek® TEC™ 150-Cassette Transfer Tray |
| 5782 | Tissue-Tek® TEC™ 75-Cassette Transfer Tray  |
| 5783 | Tissue-Tek® TEC™ Base Mold Dividers         |
| 5784 | Tissue-Tek® TEC™ Magnifying Glass           |
| 5785 | Tissue-Tek® TEC™ Foot Pedal Switch          |
| 5787 | Tissue-Tek® TEC™ Removable Hot Plate        |

|            |  |
|------------|--|
| SA-5229-UT | User Training Tissue-Tek® TEC™ 5               |
| SC-5229-G  | Service Agreements Tissue-Tek® TEC™ 5 Gold     |
| SC-5229-P  | Service Agreements Tissue-Tek® TEC™ 5 Platinum |
| SC-5229-S  | Service Agreements Tissue-Tek® TEC™ 5 Silver   |

## Tissue-Tek® TEC™ 5 Tissue Embedding Console System

The Tissue-Tek® TEC™ 5 Tissue Embedding Console System consists of two modules that together create an ergonomic workstation for the production of paraffin blocks. The user can position the individual modules from either left to right or right to left, depending on personal preference. The work surfaces of both modules are at the same height and thus the specimens can be transferred easily from one side to the other. The system is fully programmable, with automatic start-up and shutdown capability and precise temperature control of all areas. The capacity of the workspace is 10 cassettes at each side of the dispensing control unit. The electric forceps can be connected easily.



## Tissue-Tek® TEC™ Plus Cryo Console

The Tissue-Tek® TEC™ Plus Cryo Console consists of the cooling plate to cool and solidify paraffin blocks after completion of tissue embedding, and the electrical control section and control panel to control and monitor the temperature for the cooling plate.

#### Specifications

##### Dimensions

|           |                 |
|-----------|-----------------|
| W x D x H | 38 x 56 x 38 cm |
|-----------|-----------------|

##### Weight

|  |       |
|--|-------|
|  | 22 kg |
|--|-------|

##### Capacity

|  |                 |
|--|-----------------|
|  | Up to 60 blocks |
|--|-----------------|

##### Temperature Range

|  |             |
|--|-------------|
|  | -10°C - 0°C |
|--|-------------|

#### Item code Description

|      |  |
|------|--|
| 5249 | Tissue-Tek® TEC™ Plus Cryo Console; 230 V, 50 Hz |
|------|--|



## Tissue-Tek® Uni-Cassette® Biopsy Cassette System

The Tissue-Tek® Uni-Cassette® Biopsy Cassette is designed to provide specimen identification and security from the grossing bench to the paraffin block and is suitable for biopsies, thanks to its fine pores (1 mm<sup>2</sup>). Each cassette is optimised for maximum fluid exchange during the processing cycle. When utilised with appropriately sized base molds, the cassette becomes the supporting structure of the paraffin block during embedding. The cassettes come with an attached lid. Available in eight colours.

| Item code | Description                                      |
|-----------|--|
| 4045      | Tissue-Tek® Uni-Cassette® Biopsy Red; 500/pcs    |
| 4086      | Tissue-Tek® Uni-Cassette® Biopsy White; 500/pcs  |
| 4087      | Tissue-Tek® Uni-Cassette® Biopsy Blue; 500/pcs   |
| 4088      | Tissue-Tek® Uni-Cassette® Biopsy Yellow; 500/pcs |
| 4089      | Tissue-Tek® Uni-Cassette® Biopsy Pink; 500/pcs   |
| 4090      | Tissue-Tek® Uni-Cassette® Biopsy Orange; 500/pcs |
| 4172      | Tissue-Tek® Uni-Cassette® Biopsy Grey; 500/pcs   |
| 4174      | Tissue-Tek® Uni-Cassette® Biopsy Green; 500/pcs  |



## Tissue-Tek® Uni-Cassette®

The Tissue-Tek® Uni-Cassette® is designed to provide specimen identification and security from the grossing bench to the paraffin block. Each cassette is optimised for maximum fluid exchange during the processing cycle. When utilised with appropriately sized base molds, the cassette becomes the supporting structure of the paraffin block during embedding.

Has virtually unlimited applications, including identifying surgical specimens from autopsies, STAT biopsies and frozen sections. The cassettes come with an attached lid. Available in 12 colours.

| Item code | Description                                     |
|-----------|---|
| 4117F     | Tissue-Tek® Uni-Cassette® Orange Burn; 2000/pcs |
| 4118F     | Tissue-Tek® Uni-Cassette® Lilac; 2000/pcs       |
| 4119F     | Tissue-Tek® Uni-Cassette® Gold; 2000/pcs        |
| 4120F     | Tissue-Tek® Uni-Cassette® Aqua; 2000/pcs        |
| 4135F     | Tissue-Tek® Uni-Cassette® Red; 2000/pcs         |
| 4153F     | Tissue-Tek® Uni-Cassette® Tan; 2000/pcs         |
| 4154F     | Tissue-Tek® Uni-Cassette® Yellow; 2000/pcs      |
| 4155F     | Tissue-Tek® Uni-Cassette® Pink; 2000/pcs        |
| 4156F     | Tissue-Tek® Uni-Cassette® Green; 2000/pcs       |
| 4157F     | Tissue-Tek® Uni-Cassette® Blue; 2000/pcs        |
| 4158F     | Tissue-Tek® Uni-Cassette® Orange; 2000/pcs      |
| 4170      | Tissue-Tek® Uni-Cassette® White; 2000/pcs       |





## Tissue-Tek® Processing/Embedding Cassette

The coverless Tissue-Tek® II Processing/Embedding Cassette is designed to provide specimen identification and security from the grossing bench to the permanent paraffin block. Each cassette is optimised for maximum fluid exchange during the processing cycle. When utilised with appropriately sized base molds, the cassette becomes the supporting structure of the paraffin block during embedding. Has virtually unlimited applications, including identifying surgical specimens from autopsies, STAT biopsies and frozen sections. Tissue-Tek® Processing/Embedding Cassette Clear is manufactured from polypropylene. Available in 14 colours.

| Item code | Description   |
|-----------|---|
| 4125      | Tissue-Tek® Processing/Embedding Cassette Tan; 2000/pcs         |
| 4126      | Tissue-Tek® Processing/Embedding Cassette Orange Burn; 2000/pcs |
| 4127      | Tissue-Tek® Processing/Embedding Cassette Lilac; 2000/pcs       |
| 4128      | Tissue-Tek® Processing/Embedding Cassette Gold; 2000/pcs        |
| 4129      | Tissue-Tek® Processing/Embedding Cassette Aqua; 2000/pcs        |
| 4130      | Tissue-Tek® Processing/Embedding Cassette Red; 2000/pcs         |
| 4179      | Tissue-Tek® Processing/Embedding Cassette Yellow; 2000/pcs      |
| 4182      | Tissue-Tek® Processing/Embedding Cassette Pink; 2000/pcs        |
| 4183      | Tissue-Tek® Processing/Embedding Cassette Green; 2000/pcs       |
| 4184      | Tissue-Tek® Processing/Embedding Cassette Blue; 2000/pcs        |
| 4185      | Tissue-Tek® Processing/Embedding Cassette Orange; 2000/pcs      |
| 4187      | Tissue-Tek® Processing/Embedding Cassette White; 2000/pcs       |
| 4191      | Tissue-Tek® Processing/Embedding Cassette Clear; 2000/pcs       |
| 4199      | Tissue-Tek® Processing/Embedding Cassette Grey; 2000/pcs        |
| 4194      | Tissue-Tek® Processing/Embedding Cassette Metal Cover; 25/pcs   |



## Tissue-Tek® Mega-Cassette™

The Tissue-Tek® Mega-Cassette™ (size 40x25x10 mm) is designed to provide specimen identification and security from the grossing bench to the permanent paraffin block. Suitable for larger tissue samples, thanks to the depth (10 mm). Each cassette is optimised for maximum fluid exchange during the processing cycle. When utilised with appropriately sized base molds, the cassette becomes the supporting structure of the paraffin block during embedding. Cassettes come with an attached lid.

| Item code | Description   |
|-----------|---|
| 4166      | Tissue-Tek® Mega-Cassette™ Base Mold (for item 4173); 6/pcs |
| 4173      | Tissue-Tek® Mega-Cassette™; 750/pcs                         |



## Tissue-Tek® Biopsy Bags

| Item code | Description                                     |
|-----------|---|
| 4223      | Tissue-Tek® Biopsy Bags (30 x 50 mm); 1.000/pcs |
| 4224      | Tissue-Tek® Biopsy Bags (45 x 65 mm); 500/pcs   |
| SA-4699   | Cassette Insert paper (66 x 26 mm)              |
| VO-9-3001 | Metal Biopsy Insert; 1/pcs (Ø18mm + Ø21mm)      |



## Tissue-Tek® Biopsy 6-Chamber Cassette

The Tissue-Tek® Biopsy 6-Chamber Cassette is designed to separate the different biopsies for the same patient number. The number for patient identification can be written on three sides of the cassette. Together with the Biopsy 6-Chamber Cassette, Sakura offers the Tissue-Tek® Torpedo Shape Base Mold for easy orientation of the tissue sample. Cassettes come with an attached lid. Available in five colours.

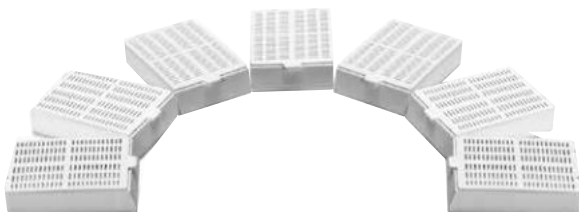
| Item code | Description   |
|-----------|---|
| 4067      | Tissue-Tek® Torpedo Base Mold for 6-Chamber Cassette (for item 4073 - 4077); 12/pcs |
| 4073      | Tissue-Tek® Biopsy 6-Chamber Cassette White; 1.000/pcs                              |
| 4074      | Tissue-Tek® Biopsy 6-Chamber Cassette Grey; 1.000/pcs                               |
| 4075      | Tissue-Tek® Biopsy 6-Chamber Cassette Yellow; 1.000/pcs                             |
| 4076      | Tissue-Tek® Biopsy 6-Chamber Cassette Green; 1.000/pcs                              |
| 4077      | Tissue-Tek® Biopsy 6-Chamber Cassette Blue; 1.000/pcs                               |



## Tissue-Tek® Mesh Biopsy Cassette

The Tissue-Tek Mesh Biopsy Cassette is an innovative concept for the safe and economical processing of biopsies. The Tissue-Tek Mesh Biopsy Cassette allows you to save time without having to use filter paper, sponges or bags to avoid carry-over. The operating efficiency is evidenced by such additional applications as filtration or use of gel without filter paper. The cassettes come with an attached lid.

| Item code | Description                                      |
|-----------|--|
| 4306      | Tissue-Tek® Mesh Biopsy Cassette White; 500/pcs  |
| 4307      | Tissue-Tek® Mesh Biopsy Cassette Pink; 500/pcs   |
| 4308      | Tissue-Tek® Mesh Biopsy Cassette Yellow; 500/pcs |
| 4309      | Tissue-Tek® Mesh Biopsy Cassette Green; 500/pcs  |
| 4312      | Tissue-Tek® Mesh Biopsy Cassette Blue; 500/pcs   |
| 4313      | Tissue-Tek® Mesh Biopsy Cassette Grey; 500/pcs   |
| 4314      | Tissue-Tek® Mesh Biopsy Cassette Red; 500/pcs    |



### Tissue-Tek® Super Mega-Cassette™

The Tissue-Tek® Super Mega-Cassette™ is designed to provide specimen identification and security from the grossing bench to the permanent paraffin block. The Tissue-Tek Super Mega-Cassette is suitable for larger and extra large tissue samples, thanks to the size of 65 x 50 x 18 mm, and is optimised for maximum fluid exchange during the processing cycle. When utilised with a specially designed base mold, the cassette becomes the supporting structure of the paraffin block during embedding. Cassettes come with an attached lid. For clamping the Tissue-Tek Super Mega-Cassette on to your microtome a Clamp adapter is available.

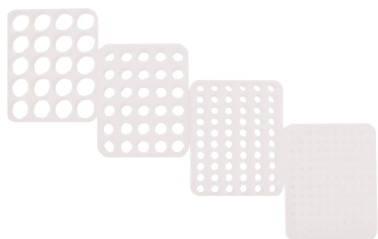
| Item code | Description  |
|-----------|--|
| 7840      | Tissue-Tek® Super Mega-Cassette™<br>Base Mold 36 x 36 x 10 mm, 5/pcs |
| 7841      | Tissue-Tek® Super Mega-Cassette™<br>Base Mold 60 x 45 x 15 mm, 5/pcs |
| 1445      | Tissue-Tek® Super Mega-Cassette™<br>Clamp Adapter for SRM series     |
| 7820      | Tissue-Tek® Super Mega-Cassette™<br>White; 100/pcs                   |



### Tissue-Tek® Base Mold System

Tissue-Tek Stainless-Steel Base Mold System is designed for use with Tissue-Tek Uni-Cassette and Biopsy, Tissue-Tek Processing/Embedding Cassettes, Tissue-Tek Mesh Biopsy Cassettes and Tissue-Tek Biopsy 6-Chamber Cassettes. The 5 mm deep molds are made of stainless steel and are reusable. They have extended fins to prevent tipping and to provide a gripping surface for easy handling. The flat, metal bottom allows maximum heat/cold exchange to enhance embedding and releasing the paraffin block.

| Item code | Description   |
|-----------|---|
| 4067      | Tissue-Tek® Torpedo Base Mold for 6-Chamber Cassette (for item 4073 - 4077); 12/pcs |
| 4161      | Tissue-Tek® Base Mold 7 x 7 x 5 mm; 12/pcs  |
| 4162      | Tissue-Tek® Base Mold 15 x 15 x 5 mm; 12/pcs  |
| 4163      | Tissue-Tek® Base Mold 24 x 24 x 5 mm; 12/pcs  |
| 4164      | Tissue-Tek® Base Mold 30 x 24 x 5 mm; 12/pcs  |
| 4165      | Tissue-Tek® Base Mold 37 x 24 x 5 mm; 12/pcs  |
| 4166      | Tissue-Tek® Mega-Cassette™ Base Mold (for item 4173); 6/pcs                         |
| 7055      | Tissue-Tek® Paraform® Standard Base Mold; 12/pcs                                    |
| 7056      | Tissue-Tek® Paraform® Biopsy/Orientation Base Mold; 12/pcs                          |
| 7057      | Tissue-Tek® Paraform® Biopsy 13 x 13 Base Mold; 12/pcs                              |
| 7840      | Tissue-Tek® Mega-Cassette™ Base Mold 36 x 36 x 10 mm, 5/pcs                         |
| 7841      | Tissue-Tek® Mega-Cassette™ Base Mold 60 x 45 x 15 mm, 5/pcs                         |



## Tissue-Tek® Quick-Ray™ Tissue Micro Array System

| Item code | Description                                      |
|-----------|--|
| 8011      | Tissue-Tek® Quick-Ray™ Punch Guide 1mm           |
| 8012      | Tissue-Tek® Quick-Ray™ Punch Tip 1mm             |
| 8013      | Tissue-Tek® Quick-Ray™ Punch Tip 2mm             |
| 8014      | Tissue-Tek® Quick-Ray™ Punch Tip 3mm             |
| 8015      | Tissue-Tek® Quick-Ray™ Punch Tip 5mm             |
| 8016      | Tissue-Tek® Quick-Ray™ Recipient Block 1mm       |
| 8017      | Tissue-Tek® Quick-Ray™ Recipient Block 2mm       |
| 8018      | Tissue-Tek® Quick-Ray™ Recipient Block 3mm       |
| 8019      | Tissue-Tek® Quick-Ray™ Recipient Block 5mm       |
| 8020      | Tissue-Tek® Quick-Ray™ Recipient Base Mold, 3/cs |

 **Tissue**  
SAKURA





sue-Tek Au

## 5. Microtomy

### Automated Microtome

Tissue-Tek AutoSection®

### Rotary Microtome

Accu-Cut® SRM™ 200

### Slides & Coverslips

Tissue-Tek® Glas™ Microscope Slides

Tissue-Tek® AutoWrite® Non-Adhesive Slides

Tissue-Tek® AutoWrite® Adhesive Slides

Tissue-Tek® AutoWrite® Advanced Adhesive Slides

Tissue-Tek® SmartWrite® Slides

Tissue-Tek® Glas™ Coverslips

Tissue-Tek® Super Mega Slides & Coverslips

Tissue-Tek® Glas™ g2 Coverslips & Easy Holder

### Accu-Edge® Disposable Microtome Blades

### Tissue-Tek® Cold Plate

Trim

Preset  
Short Uni-S

Section Block

Align /  
Section



# Tissue-Tek AutoSection®

## Automated Microtome



**SMART Automation**  
Powered by Sakura

### Specifications

|                           |   |
|---------------------------|---|
| <b>Dimensions</b>         | W 42 x D 67 x H 44 cm   |
| <b>Weight</b>             | 54 kg   |
| Specimen orientation      | AutoAlign™ Technology offering 3D Automated Chuck & Alignment |
| Horizontal & Vertical     | 0 – 5 degree (automated)                                      |
| Rotation                  | 0, 90 degree (manual)   |
| Programs                  | 16 (incl. block size, speed, thickness)                       |
| Macros (user defined)     | One for each program, up to 15 steps                          |
| Trimming                  | AutoTrim™ Technology  |
| Cutting speed             | 10 – 450 mm/s   |
| Trimming thickness        | 1 – 200 µm  |
| Section thickness         | 0.5 – 100 µm  |
| Vertical cutting stroke   | 13, 25, 35, 70 mm   |
| Hor. specimen advance     | 10 mm   |
| Specimen retraction range | 0 – 100 µm  |
| Specimen feed speed       | 1300 µm/s   |
| Screen                    | Color LCD touch screen  |
| Remote                    | Bluetooth Wireless remote                                     |
| Data interface            | USB 2.0   |

## Tissue-Tek AutoSection®

Building on the success and principles of SMART Automation, Sakura Finetek introduces the next steps in Total Laboratory Automation, Tissue-Tek AutoSection®. The cutting edge technology addresses today's challenges of quality, efficiency and speed.

### Quality & patient safety

Precision sectioning and consistent high quality, is now achievable for every technician, every single block and tissue type. The Tissue-Tek AutoSection automatically aligns, trims and sections your blocks, including Tissue-Tek Paraform. The combination of cutting edge technology and razor sharp Accu-Edge® Microtome Blades enables thin, consistent high quality sections. AutoAlign™ technology will precisely orient blocks and dramatically reduce the risk of losing tissue. Another major benefit of automation and stress free microtomy is the reduction of repetitive motion and the increase of staff satisfaction.

### Efficiency & speed

Work in a single-piece-flow and increase productivity, by only one touch of a button and scan of a cassette. With AutoTrim™, the core technology of Tissue-Tek Auto-section, blocks are ready for sectioning within seconds, saving valuable production time, in particular with recuts.



## Tissue-Tek AutoSection offers you:

- Precise and consistent high-quality sectioning for every technician and tissue type
- Preserves precious tissue of re-cuts due to automated block alignment
- Improved efficiency and speed, due to easy and automated microtomy
- Decreased repetitive strain disorders for users

| Item code  | Description   |
|------------|---|
| 5000       | Tissue-Tek AutoSection® Automated Microtome         |
| 5008       | Accu-Edge® Low-Profile Blade Holder                 |
| 5009       | Accu-Edge® High-Profile Blade Holder                |
| 4658       | Tissue-Tek® Waste Collection Bags 250/pcs           |
| 7089       | Accu-Edge® Paraform® disposable Microtome Blades    |
| SA-5000-UT | User Training Tissue-Tek AutoSection®               |
| SC-5000-G  | Service Agreements Tissue-Tek AutoSection® Gold     |
| SC-5000-P  | Service Agreements Tissue-Tek AutoSection® Platinum |
| SC-5000-S  | Service Agreements Tissue-Tek AutoSection® Silver   |



Microtomy

## Accu-Cut® SRM™ 200 Rotary Microtome



### Specifications

| Dimensions                        |                                |
|-----------------------------------|--------------------------------|
| W x D x H                         | 40.0 x 47.0 x 29.5 cm          |
| Working height                    | 10.5 cm                        |
| Weight                            | 29 kg                          |
| Section Thickness Range           |                                |
| Increment                         | 0.5 - 60 µm                    |
|                                   | 0 - 2 µm (0.5 µm increments)   |
|                                   | 2 - 10 µm (1 µm increments)    |
|                                   | 10 - 20 µm (2 µm increments)   |
|                                   | 20 - 60 µm (5 µm increments)   |
| Coarse Feed Advance               | Clockwise                      |
| Horizontal Specimen               |                                |
| Advance                           | 25 mm                          |
| Vertical Specimen Stroke          |                                |
| Length                            | 59 mm                          |
| Specimen Retraction               | 220 µm                         |
| Clearance Angle for Blade         |                                |
| Holder                            | 0 - 10°                        |
| Specimen Orientation              |                                |
| Three-axis Orientation            | Horizontal: 8°                 |
|                                   | Vertical: 8°                   |
|                                   | Rotation: 90°                  |
| Micron Thickness Setting:         | Adjustable with visual display |
| Trimming Steps:                   | 10 µm, 50 µm                   |
| Displacement of Blade Holder Base |                                |
| North/South                       |                                |
| Maximum:                          | 55 mm (Vertically)             |
| With all adapters attached:       | 40 mm                          |
| East/West:                        |                                |
|                                   | 45 mm (Horizontally)           |

### Accu-Cut® SRM™ 200

The Accu-Cut® SRM™ 200 Rotary Microtome is a reliable rotary microtome developed for all applications of paraffin and hard specimens in clinical, research and industrial laboratories. This instrument displays extraordinary ergonomic characteristics for comfortable operation while maintaining reproducible precision during sectioning. The Accu-Cut SRM 200 Rotary Microtome has various settings for trimming. The specimen retraction function allows section ribbons to be formed immediately and more easily.

Sakura Finetek offers, together with the Accu-Edge® Disposable Microtome Blades, a full range of cutting edge solutions for microtomy purposes.

The Accu-Cut SRM 200 Rotary Microtome is supplied with a complete package of accessories, so it can be used immediately after installation.

| Item code  | Description  |
|------------|--|
| 1429       | Accu-Cut® SRM™ 200 Manual Rotary Microtome                         |
| 1434       | Accu-Cut® SRM™ 200 Blade Holder Base Assembly                      |
| 1469       | Accu-Cut® SRM™ 200 Blade Holder for High Profile Disposable Blades |
| 1435       | Accu-Cut® SRM™ 200 Blade Holder for Low Profile Disposable Blades  |
| 1436       | Accu-Cut® SRM™ 200 High-Profile Back Plate (part of item 1469)     |
| 1437       | Accu-Cut® SRM™ 200 Low-Profile Back Plate (part of item 1435)      |
| 1438       | Accu-Cut® SRM™ 200 3-Axis Orientation Attachment for Clamp         |
| 1439       | Accu-Cut® SRM™ 200 Universal Cassette Clamp with Adapter           |
| 1440       | Accu-Cut® SRM™ 200 Maintenance Kit                                 |
| 1441       | Accu-Cut® SRM™ 200 Protective Dust Cover                           |
| 1442       | Accu-Cut® SRM™ 200 Knife Holder N Assembly for Steel Knives        |
| 1443       | Accu-Cut® SRM™ 200 Non-Orientating Attachment for Clamps           |
| 1444       | Accu-Cut® SRM™ 200 Specimen Clamp 40 x 40 mm                       |
| 1445       | Tissue-Tek® Super Mega-Cassette™ Clamp Adapter for SRM series      |
| 1446       | Accu-Cut® SRM™ 200 V-Insert  |
| 1447       | Accu-Cut® SRM™ 200 Bottle of Oil, Type 405                         |
| 1468       | Accu-Cut® SRM™ 200 200 Waste Tray                                  |
| SA-1429-UT | User Training Accu-Cut® SRM™ 200                                   |
| SC-1429-G  | Service Agreements Accu-Cut® SRM™ 200 Gold                         |
| SC-1429-P  | Service Agreements Accu-Cut® SRM™ 200 Platinum                     |
| SC-1429-S  | Service Agreements Accu-Cut® SRM™ 200 Silver                       |



## Tissue-Tek® Glas™ Microscope Slides

Tissue-Tek® Glas™ Microscope Slides provides ready-to-use soda-lime glass slides perfect for everyday laboratory work. These slides are 76 x 26 mm in dimension with approximate thickness of 1,0 mm. The Tissue-Tek Glas slides come in cut edges and ground edges 90° with or without double frosted ends. The frosted ends will allow users to write with a pencil to mark the slides. The Tissue-Tek Glas series is perfect for routine slide work.

The slides are manufactured according to the ISO 8037/1 standard. The slides are supplied in volumes of 2500; 50 packs of 50 slides.

| Item code | Description  |
|-----------|--|
| 9531      | Tissue-Tek® Glas™ Non-Adhesive Cut Edges; 50 x 50/pcs                |
| 9532      | Tissue-Tek® Glas™ Non-Adhesive Ground Edges 90°; 50 x 50/pcs         |
| 9533      | Tissue-Tek® Glas™ Non-Adhesive Ground Edges 90° Frosted; 50 x 50/pcs |
| 9534      | Tissue-Tek® Glas™ Non-Adhesive Cut Edges Frosted; 50 x 50/pcs        |

## Tissue-Tek AutoWrite® Non-Adhesive Slides



Tissue-Tek® AutoWrite® Non-Adhesive Slides are designed and manufactured for optimal results with the Tissue-Tek® AutoWrite® Slide Printer and other ink-jet slide printers.

The slides are available in 7 different colors; white, blue, pink, yellow, green, orange and purple. To reduce slides chipping and jamming during use in the slide printers, the slides are ground edges 90° with clipped corners.

The Tissue-Tek AutoWrite Non-Adhesive Slides are manufactured according to ISO 8037/1 standards. The slides are approximately 76 x 26 mm with thickness of 1.0 mm. The slides are supplied in volumes of 2500; 50 packs of 50 slides each.

| Item code | AutoWrite® Non-Adhesive Ground Edges 90° |
|-----------|--|
| 9562      | Clipped Corner White; 50 x 50/pcs        |
| 9563      | Clipped Corner Blue; 50 x 50/pcs         |
| 9564      | Clipped Corner Pink; 50 x 50/pcs         |
| 9565      | Clipped Corner Yellow; 50 x 50/pcs       |
| 9566      | Clipped Corner Green; 50 x 50/pcs        |
| 9567      | Clipped Corner Orange; 50 x 50/pcs       |
| 9568      | Clipped Corner Purple; 50 x 50/pcs       |



## Tissue-Tek® Autowrite® Adhesive Slides

Tissue-Tek® AutoWrite® Adhesive Slides are manufactured with silane-coating, creating special charge which increases the adhesion of the tissue to the slide. The slides have the same printing area characteristics as the Non-Adhesive slides, optimised for printing with Tissue-Tek AutoWrite Printer and other ink-jet printers.

These slides are perfect for tests that require extra care when processing, such as cartilage.

Slides are available in 7 different colors; white, blue, pink, yellow, green, orange and purple. The slides will have ground edges 90° with clipped corners.

The Tissue-Tek AutoWrite Adhesive Slides are manufactured according to ISO 8037/1 standards with approximate dimension of 76 x 26 mm and thickness of 1.0 mm. The slides are supplied in volumes of 1440; 20 packs of 72 slides each.

| Item code | AutoWrite® Adhesive Ground Edges 90° |
|-----------|--------------------------------------|
| 9597      | Clipped Corner White; 20 x 72/pcs    |
| 9598      | Clipped Corner Blue; 20 x 72/pcs     |
| 9599      | Clipped Corner Pink; 20 x 72/pcs     |
| 9600      | Clipped Corner Yellow; 20 x 72/pcs   |
| 9601      | Clipped Corner Green; 20 x 72/pcs    |
| 9602      | Clipped Corner Orange; 20 x 72/pcs   |
| 9603      | Clipped Corner Purple; 20 x 72/pcs   |



## Tissue-Tek® AutoWrite® Advanced Adhesive Slides

Tissue-Tek® AutoWrite® Advanced Adhesive Slides are developed for use in Immunohistochemistry (IHC) and other harsher applications. Even more adhesiveness compared to the Tissue-Tek AutoWrite Adhesive slides, these will eliminate the issue of tissues falling off.

The Tissue-Tek AutoWrite Advanced Adhesive Slides are available in white with ground edges 90° clipped corners. Slide dimensions are approximately 76 x 26 mm with a thickness of 1.0 mm. The slides are supplied in volumes of 1440; 20 packs of 72 slides each.

### Item code AutoWrite® Advanced Adhesive

|      |                                   |
|------|-----------------------------------|
| 9618 | Clipped Corner White; 20 x 72/pcs |
|------|-----------------------------------|

## Tissue-Tek® SmartWrite® Slides

The Tissue-Tek® SmartWrite® Slides come with a frosted area with unique characteristics. The new frosted areas are optimised for use on the thermal transfer printers as well as use on Ink-Jet printers.

The Tissue-Tek SmartWrite Slides are 26 x 76 mm in size with approximately 1,0 mm in thickness. The slides are made from soda-lime glass. The frosted area will be approximately 20 mm wide and the bottom corners will have special print to level the slides. This will reduce the chance of scratching on the glass and slides sticking to each other. It will come in white with ground edge 90° with clipped corners. This slide configuration reduces unwanted slide damage and frequency of slides getting jammed in the printer.

The Tissue-Tek SmartWrite Slides are available in both non-adhesive and adhesive slides. The non-adhesive slides are supplied in volumes of 2500; 50 packs of 50. The adhesive slides are supplied in volumes of 1440; 20 packs of 72.

### Item code Tissue-Tek® SmartWrite® Advanced

|      |   |
|------|---|
| 9585 | Non-Adhesive Ground Edges 90° Clipped Corner White; 50 x 50/pcs |
| 9721 | Adhesive Ground Edges 90° Clipped Corner White; 20 x 72/pcs     |

## Tissue-Tek® Glas™ Coverslips

Tissue-Tek® Glas™ Coverslips are ideal for the covering of preparations in microscopic assays in histopathology, medicine, biology and research. These coverslips are borosilicate glass with hydrolytic class of 1. The coverslips can be used in with the Tissue-Tek® Glas™ g2 Coverslipper.

The thickness is roughly 0,13 – 0,17 mm and is packed in 100 piece boxes and are manufactured according to the international standard ISO 8225/1. The coverslips are available in 4 different lengths: 24x 40mm, 24 x 50 mm, 24 x 55mm and 24 x 60 mm. The coverslips are supplied in volumes of 1000; 10 packs of 100 coverslips.

### Item code Description

|      |   |
|------|---|
| 9579 | Tissue-Tek® Glas™ Coverslips 24 x 55 mm, 10 x 100/pcs |
| 9580 | Tissue-Tek® Glas™ Coverslips 24 x 40 mm, 10 x 100/pcs |
| 9581 | Tissue-Tek® Glas™ Coverslips 24 x 50 mm, 10 x 100/pcs |
| 9582 | Tissue-Tek® Glas™ Coverslips 24 x 60 mm, 10 x 100/pcs |

## Tissue-Tek® Super Mega Slides & Coverslips

The Tissue-Tek® Super Mega Slides are made for larger tissue sections that are too large for normal slides. By creating large slides, uninterrupted examination is possible. Special inserts for the slide baskets are available for the Tissue-Tek Super Mega slides which enable staining on the automated slide stainers. The slides are supplied in volumes of 50; 1 pack of 50 slides.

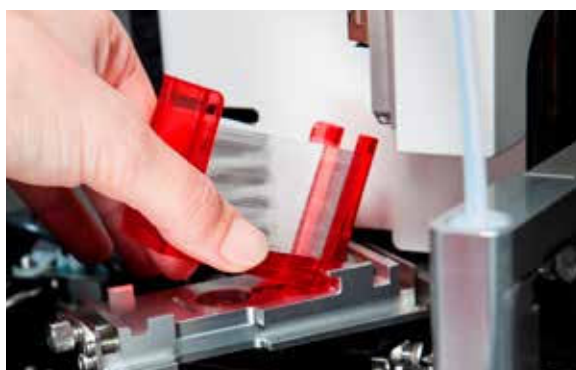
The Tissue-Tek® Super Mega Coverslips are coverslips made specifically for use with the Tissue-Tek Super Mega slides.

The coverslips are borosilicate glass with hydrolytic class of 1. The coverslips are supplied in volumes of 100; 1 pack of 100 coverslips.

### Item code Description

|      |   |
|------|---|
| 9641 | Tissue-Tek® Super Mega Slide Cut Edges 76 x 52 mm; 100/pcs  |
| 9642 | Tissue-Tek® Super Mega Slide Coverslips 60 x 50 mm; 100/pcs |
| 9643 | Tissue-Tek® Super Mega Slide Coverslips 76 x 52 mm; 100/pcs |





## Tissue-Tek® Glas™ g2 Coverslips & Easy Holder

The quick way of refilling coverslips in the Tissue-Tek® Glas™ g2, with the convenient prefilled Easy Holder.

| Item code | Description  |
|-----------|--|
| 6415      | Tissue-Tek® Glas™ g2 Coverslips & Easy Holder 24 x 40 mm, 5 x 200/cs |
| 6416      | Tissue-Tek® Glas™ g2 Coverslips & Easy Holder 24 x 50 mm, 5 x 200/cs |
| 6417      | Tissue-Tek® Glas™ g2 Coverslips & Easy Holder 24 x 60 mm, 5 x 200/cs |



## Tissue-Tek® Cold Plate

The Tissue-Tek® Cold Plate provides an easy way to cool blocks before sectioning. Just cool the plates in an ordinary freezer and take them out when there is a need for cooling blocks. The plates will stay cold for a long period, due to insulated bases.

| Item code | Description   |
|-----------|---|
| 4650      | Cold Plate (1 base and 6 plates) 25x10x3 cm, set 3 kg |



## Accu-Edge® Disposable Microtome Blades

Accu-Edge® Disposable Microtome Blades are the worldwide standard for disposable microtome blades. They are manufactured by Feather in Japan. Sakura offers a wide range of nine different Accu-Edge Disposable Microtome Blades, including the well-known S35 and R35 blades, for sectioning different specimens. The ultra-sharp blades section specimens without striations, distortion or chattering.

The Accu-Edge Paraform® Microtome Blade is specially designed for the sectioning of Tissue-Tek Paraform® Cassettes to guarantee the best results.

| Item code | Description  |
|-----------|--|
| 4685      | Accu-Edge® High-Profile for large specimens          |
| 4980      | Accu-Edge® Low-Profile extremely thin sectioning     |
| 4810      | Accu-Edge® Low-Profile Cryo sectioning               |
| 4690      | Accu-Edge® Low-Profile for hard tissues              |
| 4691      | Accu-Edge® Low-Profile for extra hard tissues        |
| 4686      | Accu-Edge® Low-Profile for ribbon sectioning         |
| 4688      | Accu-Edge® Low-Profile for extremely thin sectioning |
| 4689      | Accu-Edge® Low-Profile for routine sectioning        |
| 7089      | Accu-Edge® Paraform® Disposable Microtome Blade      |





## 6. Staining & Coverslipping

### **Automated Slide Stainer & Coverslipper**

Tissue-Tek Prisma® Plus & Tissue-Tek Film®

Tissue-Tek Prisma® Plus & Tissue-Tek® Glas™ g2

### **Tissue-Tek® DRS™ 2000 Multiple Slide Stainer**

### **Tissue-Tek® Manual Slide Staining Kit**

### **Tissue-Tek® Coverslipping Film**

### **Tissue-Tek® Mounting Media**

### **Tissue-Tek® Glas™ g2 Coverslips & Easy Holder**

### **Tissue-Tek® SF Glas™ Coverslips**



## Tissue-Tek Prisma® Plus & Film®

### Automated Slide Stainer & Coverslipper



**SMART Automation**  
Powered by Sakura

#### Specifications

|                   |                  |
|-------------------|------------------|
| <b>Capacity</b>   | 660 slides       |
| <b>Dimensions</b> |                  |
| W x D x H         | 197 x 71 x 69 cm |
| <b>Weight</b>     | 225 kg           |
| <b>Capacity</b>   |                  |
| Loading           | Up to 60 slides  |
| Unloading         | Up to 240 slides |

#### Specifications

#### Prisma® Plus Slide stainer

|                             |   |
|-----------------------------|---|
| <b>Capacity</b>             | 660 slides  |
| <b>Dimensions</b>           |   |
| W x D x H                   | 125 x 71 x 63 cm  |
| <b>Weight</b>               | 150 kg  |
| <b>Number of reservoirs</b> |   |
| Start                       | 1 to 3 stations   |
| Reagent                     | 31 to 51 reservoirs   |
| Drying                      | 0 to 2 stations   |
| Wash                        | 0 to 4 stations<br>(8 programmable steps)                   |
| Heating (optional)          | 2 stations  |
| <b>Capacity</b>             |   |
| Reagent volume              | 160, 260 and 680 mL   |
| Staining protocols          | 11 runs continuously loading,<br>and simultaneously running |
| Baskets                     | 10- or 20-slide basket                                      |
| Loading                     | Up to 60 slides per run                                     |
| <b>Temperature</b>          |   |
| Drying station              | 30 ~ 65°C   |
| Heating station             | 30 ~ 70°C   |

#### Specifications

#### Tissue-Tek Film® Coverslipper

|                   |                       |
|-------------------|-----------------------|
| <b>Capacity</b>   | 1080 slides           |
| <b>Dimensions</b> |                       |
| W x D x H         | 72 x 58 x 69 cm       |
| <b>Weight</b>     | 75 kg                 |
| <b>Capacity</b>   |                       |
| Loading           | Up to 60 slides       |
| Unloading         | Up to 240 slides      |
| Track & Trace     | Slide Barcode Reading |

## Tissue-Tek Prisma® Plus & Tissue-Tek Film®

The Tissue-Tek Prisma® Plus & Tissue-Tek Film® integrated system is the gold standard in staining and film coverslipping. This reliable and flexible workhorse is the ultimate timesaver for your laboratory.

This guaranties true walk away capability and continuous confidence in performance and quality due to its unsurpassed system up-time.

The flexibility of standard and special staining in a single system, with the use of proven film coverslipping technology makes this a cost efficient method.

### Ultimate time saving

Virtually every histopathology lab is pushed on turnaround times and faces increasing workload, often with reduced staff and with equal or less financial resources. The integrated Prisma Plus and Film is the ultimate time saver, freeing your staff for other important tasks.

### Supreme flexibility

Customers have greatly appreciated the convenience delivered by the integrated Prisma Film stainer coverslipper. This is due to the flexibility of having a single platform to easily perform a H&E and special stains reducing hands on time, maintenance time and service costs.

### Superior reliability

The Prisma Plus and Film coverslipper have been designed, engineered and built to provide the laboratory with an integrated stainer coverslipper having a pedigree of dependability and reliability. This ensures a smooth workflow through continuous loading and high quality staining slide after slide.

## Tissue-Tek Prisma Plus & Tissue-Tek Film offer you:

- Ultimate time saving
- Supreme flexibility
- Superior reliability







## Tissue-Tek® iSupport™ Powered by Sakura

### Item code Description

|      |  |
|------|--|
| 8022 | License Tissue-Tek® iSupport™              |
| 8023 | License Tissue-Tek® iSupport™ (extra user) |

### Item code Description

|      |  |
|------|--|
| 6172 | Tissue-Tek Prisma® Plus Standard Configuration;<br>230 V, 50/60 Hz         |
| 6173 | Tissue-Tek Prisma® Plus Special Staining<br>Configuration; 230 V, 50/60 Hz |
| 4768 | Tissue-Tek® 20-Slide Basket  |
| 6135 | Tissue-Tek Prisma® 20-Slide Basket<br>Load/Unload Adapter                  |
| 6136 | Tissue-Tek Prisma® 20-Slide Basket Adapter                                 |
| 6137 | Tissue-Tek Prisma® 10-Slide Basket   |
| 6138 | Tissue-Tek Prisma® 10-Slide Basket Adapter                                 |
| 6139 | Tissue-Tek Prisma® 10-Slide Basket<br>Load/Unload Station Adapter          |
| 6140 | Tissue-Tek Prisma® Special Stain Solution<br>Reservoir (160 mL)            |
| 6141 | Tissue-Tek Prisma® Heated Solution Reservoir                               |
| 6144 | Tissue-Tek Prisma® Lid for Special Stain<br>Solution Reservoir             |
| 6145 | Tissue-Tek Prisma® Small Solution Reservoir<br>(260 mL)                    |
| 6146 | Tissue-Tek Prisma® Lid for Small Solution<br>Reservoir                     |
| 6147 | Tissue-Tek Prisma® Standard Solution<br>Reservoir (680 mL)                 |
| 6148 | Tissue-Tek Prisma® Standard Solution<br>Reservoir with Handle (680 mL)     |
| 6149 | Tissue-Tek Prisma® Wash Reservoir  |
| 6151 | Tissue-Tek Prisma® Lid for Standard Solution<br>Reservoir                  |
| 6152 | Tissue-Tek Prisma® 3-Position Reservoir Tray                               |
| 6153 | Tissue-Tek Prisma® Large Lid for 3-Position<br>Reservoir Tray              |
| 6154 | Tissue-Tek Prisma® 4-Position Reservoir Tray                               |
| 6155 | Tissue-Tek Prisma® Large Lid for 4-Position<br>Reservoir Tray              |
| 6156 | Tissue-Tek Prisma® Special Stain Reservoir Tray                            |
| 6157 | Tissue-Tek Prisma® Standard Solution<br>Reservoir Set                      |
| 6158 | Tissue-Tek Prisma® Small Solution Reservoir Set                            |
| 6159 | Tissue-Tek Prisma® Special Stain Solution<br>Reservoir Set                 |







**Item code Description**

|          |   |
|----------|---|
| 6160     | Tissue-Tek Prisma® Activated Carbon Filter; 2/pcs                           |
| 6162     | Tissue-Tek Prisma® Basket Adapter Label                                     |
| 6163     | Tissue-Tek Prisma® Control Panel Protection Sheet                           |
| 6164     | Tissue-Tek Prisma® Compact Flash Card (512 Mb)                              |
| 6165     | Tissue-Tek Prisma® Duct Connection Adapter (38 mm)                          |
| 6166     | Tissue-Tek Prisma® Duct Connection Adapter (75 mm)                          |
| HIS40614 | Tissue-Tek® Insert for slide basket (for 5 large slides maximum 60 mm wide) |

|            |   |
|------------|---|
| SA-6172-UT | User Training Tissue-Tek Prisma® Plus Standard              |
| SA-6173-UT | User Training Tissue-Tek Prisma® Plus Special               |
| SC-6172-G  | Service Agreement Tissue-Tek Prisma® Plus Standard Gold     |
| SC-6172-P  | Service Agreement Tissue-Tek Prisma® Plus Standard Platinum |
| SC-6172-S  | Service Agreement Tissue-Tek Prisma® Plus Standard Silver   |
| SC-6173-G  | Service Agreement Tissue-Tek Prisma® Plus Special Gold      |
| SC-6173-P  | Service Agreement Tissue-Tek Prisma® Plus Special Platinum  |
| SC-6173-S  | Service Agreement Tissue-Tek Prisma® Plus Special Silver    |

**Item code Description**

|      |  |
|------|--|
| 4742 | Tissue-Tek Film® Coverslipper 230 V, 50/60 Hz                        |
| 6508 | Tissue-Tek® Barcode system for Coverslippers                         |
| 6134 | Tissue-Tek Prisma® Link System Kit for Tissue-Tek Film® Coverslipper |
| 4770 | Tissue-Tek® Coverslipping Film 70 m                                  |
| 4772 | Tissue-Tek® Coverslipping Film Cutter Blades; 5/cs                   |
| 6160 | Tissue-Tek Prisma® Activated Carbon Filter; 2/cs                     |
| 4745 | Tissue-Tek® Xylene Bottle (500 mL)                                   |
| 4746 | Tissue-Tek® Cap for Xylene Bottle                                    |
| 4748 | Tissue-Tek® Waste Bottle (200 mL)                                    |
| 4749 | Tissue-Tek® Cap for Waste Bottle                                     |
| 6506 | Tissue-Tek® Exhaust hose assembly 38 mm Ø                            |
| 6507 | Tissue-Tek® Exhaust hose assembly 75 mm Ø                            |

|            |   |
|------------|---|
| SA-4742-UT | User Training Tissue-Tek Film® Coverslipper               |
| SC-4742-G  | Service Agreements Tissue-Tek Film® Coverslipper Gold     |
| SC-4742-P  | Service Agreements Tissue-Tek Film® Coverslipper Platinum |
| SC-4742-S  | Service Agreements Tissue-Tek Film® Coverslipper Silver   |

# Tissue-Tek Prisma® Plus & Tissue-Tek® Glas™ g2

## Automated Slide Stainer & Coverslipper



**SMART Automation**  
Powered by Sakura

### Specifications

|                   |                     |
|-------------------|---------------------|
| <b>Throughput</b> | 360 slides per hour |
| <b>Dimensions</b> |                     |
| W x D x H         | 200 x 71 x 75 cm    |
| <b>Weight</b>     | 260 kg              |
| <b>Capacity</b>   |                     |
| Loading           | Up to 60 slides     |
| Unloading         | Up to 240 slides    |

| Specifications              | Prisma® Plus Slide stainer                                  |
|-----------------------------|---|
| <b>Capacity</b>             | 660 slides  |
| <b>Dimensions</b>           |   |
| W x D x H                   | 125 x 71 x 63 cm  |
| <b>Weight</b>               | 150 kg  |
| <b>Number of reservoirs</b> |   |
| Start                       | 1 to 3 stations   |
| Reagent                     | 31 to 51 reservoirs   |
| Drying                      | 0 to 2 stations   |
| Wash                        | 0 to 4 stations<br>(8 programmable steps)                   |
| Heating (optional)          | 2 stations  |
| <b>Capacity</b>             |   |
| Reagent volume              | 160, 260 and 680 mL   |
| Staining protocols          | 11 runs continuously loading, and<br>simultaneously running |
| Baskets                     | 10- or 20-slide basket                                      |
| Loading                     | Up to 60 slides per run                                     |
| <b>Temperature</b>          |   |
| Drying station              | 30 ~ 65°C   |
| Heating station             | 30 ~ 70°C   |

| Specifications    | Tissue-Tek® Glas™ g2 Coverslipper |
|-------------------|-----------------------------------|
| <b>Throughput</b> | 360 slides per hour               |
| <b>Dimensions</b> |                                   |
| W x D x H         | 75 x 62 x 75 cm                   |
| <b>Weight</b>     | 110 kg                            |
| <b>Capacity</b>   |                                   |
| Loading           | Up to 60 slides                   |
| Unloading         | Up to 240 slides                  |

### Tissue-Tek Prisma® Plus & Tissue-Tek® Glas™ g2

Tissue-Tek Prisma® Plus & Tissue-Tek® Glas™ g2 provides high reliability, user convenience and flexibility in staining and glass coverslipping. One system for routine and special staining, with Integrated Track & Trace with barcode reading.

### Optimised consistent high quality

Prisma Plus & Tissue-Tek Glas g2 enables optimised and consistent high quality routine and special staining. Slide-to-slide consistency results in crisp images with clear morphological and nuclear detail. Quality is further enhanced with optimised protocols and specialised Sakura application support. Integrated track & trace capability through slide barcode reading enhances laboratory quality assurance. Determine the status of slides real-time and stay in control.

### Increased efficiency and reliability

Prisma & Glas g2 provides unmatched staining and glass coverslipping turn around time improvement with 360 slides per hour. The system enables an efficient workflow with continuous loading and unloading capabilities. The Tissue-Tek Prisma Plus is the most flexible multiple stainer on the market, with a wide range of configurations for routine and special staining. The availability of three different volume reagent reservoirs optimises reagent usage and decreases operating costs. Mechatronics™ mechanism prevents any damage to the cover glass or tissue and guarantees bubble free slides.

Enhance user convenience with Tissue-Tek® Glas™ g2 Coverslips & Easy Holders. These pre-filled coverslip holders enable quick and easy refilling of glass coverslips.

### Tissue-Tek Prisma & Glas g2 offer you:

- Improved quality, efficiency and user friendliness
- Rapid glass coverslipping with 360 slides per hour
- One system for routine and special staining
- Integrated Track & Trace and slide identification with barcode reading
- An air bubble free result through Mechatronics mechanism





| Item code | Description  |
|-----------|--|
| 6172      | Tissue-Tek Prisma® <i>Plus</i> Standard Configuration; 230 V, 50/60 Hz             |
| 6173      | Tissue-Tek Prisma® <i>Plus</i> Special Staining Configuration; 230 V, 50/60 Hz     |
| 4768      | Tissue-Tek® 20-Slide Basket  |
| 6135      | Tissue-Tek Prisma® 20-Slide Basket Load/Unload Adapter                             |
| 6136      | Tissue-Tek Prisma® 20-Slide Basket Adapter   |
| 6137      | Tissue-Tek Prisma® 10-Slide Basket   |
| 6138      | Tissue-Tek Prisma® 10-Slide Basket Adapter   |
| 6139      | Tissue-Tek Prisma® 10-Slide Basket Load/Unload Station Adapter                     |
| 6140      | Tissue-Tek Prisma® Special Stain Solution Reservoir (160 mL)                       |
| 6141      | Tissue-Tek Prisma® Heated Solution Reservoir                                       |
| 6144      | Tissue-Tek Prisma® Lid for Special Stain Solution Reservoir                        |
| 6145      | Tissue-Tek Prisma® Small Solution Reservoir (260 mL)                               |
| 6146      | Tissue-Tek Prisma® Lid for Small Solution Reservoir                                |
| 6147      | Tissue-Tek Prisma® Standard Solution Reservoir (680 mL)                            |
| 6148      | Tissue-Tek Prisma® Standard Solution Reservoir with Handle (680 mL)                |
| 6149      | Tissue-Tek Prisma® Wash Reservoir  |
| 6151      | Tissue-Tek Prisma® Lid for Standard Solution Reservoir                             |
| 6152      | Tissue-Tek Prisma® 3-Position Reservoir Tray                                       |
| 6153      | Tissue-Tek Prisma® Large Lid for 3-Position Reservoir Tray                         |
| 6154      | Tissue-Tek Prisma® 4-Position Reservoir Tray                                       |
| 6155      | Tissue-Tek Prisma® Large Lid for 4-Position Reservoir Tray                         |
| 6156      | Tissue-Tek Prisma® Special Stain Reservoir Tray                                    |
| 6157      | Tissue-Tek Prisma® Standard Solution Reservoir Set                                 |
| 6158      | Small Solution Reservoir Set   |
| 6159      | Special Stain Solution Reservoir Set   |
| 6160      | Tissue-Tek Prisma® Activated Carbon Filter; 2/cs                                   |
| 6162      | Tissue-Tek Prisma® Basket Adapter Label  |
| 6163      | Tissue-Tek Prisma® Control Panel Protection Sheet                                  |
| 6164      | Tissue-Tek Prisma® Compact Flash Card (512 Mb)                                     |
| HIS40614  | Tissue-Tek Prisma® Insert for slide basket (for 5 large slides maximum 60 mm wide) |







#### Item code Description

|            |   |
|------------|---|
| SA-6172-UT | User Training Tissue-Tek Prisma® Plus Standard              |
| SA-6173-UT | User Training Tissue-Tek Prisma® Plus Special               |
| SC-6172-G  | Service Agreement Tissue-Tek Prisma® Plus Standard Gold     |
| SC-6172-P  | Service Agreement Tissue-Tek Prisma® Plus Standard Platinum |
| SC-6172-S  | Service Agreement Tissue-Tek Prisma® Plus Standard Silver   |
| SC-6173-G  | Service Agreement Tissue-Tek Prisma® Plus Special Gold      |
| SC-6173-P  | Service Agreement Tissue-Tek Prisma® Plus Special Platinum  |
| SC-6173-S  | Service Agreement Tissue-Tek Prisma® Plus Special Silver    |

#### Item code Description

|      |  |
|------|--|
| 6502 | Tissue-Tek® Glas™ g2 Coverslipper 230V, 50/60Hz                          |
| 6508 | Tissue-Tek® Barcode System for Coverslippers                             |
| 6168 | Tissue-Tek Prisma® Link System Kit for Tissue-Tek® Glas™ g2 Coverslipper |
| 6415 | Tissue-Tek® Glas™ g2 Coverslips & Easy Holder 24x40 mm; 5 x 200/cs       |
| 6416 | Tissue-Tek® Glas™ g2 Coverslips & Easy Holder 24x50 mm; 5 x 200/cs       |
| 6417 | Tissue-Tek® Glas™ g2 Coverslips & Easy Holder 24x60 mm; 5 x 200/cs       |
| 6423 | Tissue-Tek® Glas™ g2 Nozzle reservoir                                    |
| 6430 | Tissue-Tek Prisma® Waste Container                                       |
| 6433 | Tissue-Tek Prisma® bottle  |
| 6504 | Tissue-Tek® Glas™ g2 Slide Rack  |
| 6505 | Tissue-Tek® Glas™ g2 Waste bottle  |
| 6160 | Tissue-Tek Prisma® Activated Carbon Filter; 2/cs                         |
| 6506 | Tissue-Tek® Exhaust hose assembly 38 mm Ø                                |
| 6507 | Tissue-Tek® Exhaust hose assembly 75 mm Ø                                |

|           |   |
|-----------|---|
| SA-4742/  | User Training Tissue-Tek® Glas™ g2                            |
| 6502-UT   | Coverslipper  |
| SC-6502-G | Service Agreements Tissue-Tek® Glas™ g2 Coverslipper Gold     |
| SC-6502-P | Service Agreements Tissue-Tek® Glas™ g2 Coverslipper Platinum |
| SC-6502-S | Service Agreements Tissue-Tek® Glas™ g2 Coverslipper Silver   |

### Tissue-Tek® iSupport™ Powered by Sakura

#### Item code Description

|      |  |
|------|--|
| 8022 | License Tissue-Tek® iSupport™              |
| 8023 | License Tissue-Tek® iSupport™ (extra user) |

# Tissue-Tek® DRS™ 2000

## Random Access & Multiple Slide Stainer



### Tissue-Tek® DRS™ 2000 Multiple Slide Stainer

The Tissue-Tek® DRS™ 2000 Multiple Slide Stainer offers multiple staining protocols in a true random-access mode. Based on current workload demands, the system can handle up to 11 sets of 40 slides at a time. The operator selects from 20 methods stored in memory, presses START and walks away. It is a simple but intelligent instrument for unsurpassed productivity - slide after slide, shift after shift.

#### Specifications

|                             |  |
|-----------------------------|--|
| Throughput                  | Up to 440 slides per hour                                |
| Dimensions                  | W x D x H 115 x 49 x 66 cm                               |
| Weight                      | 90 kg  |
| <b>Number of reservoirs</b> |  |
| Start                       | 1 to 3 stations  |
| Reagent                     | 27 reservoirs  |
| Drying                      | 1 station  |
| Wash                        | 0 to 4 stations  |
| <b>Capacity</b>             |  |
| Reagent volume              | 650 mL   |
| Staining protocols          | 11 runs continuously loading, and simultaneously running |
| Baskets                     | 20 slide basket  |
| Loading                     | Up to 40 slides per run                                  |
| <b>Temperature</b>          |  |
| Drying station              | 30 ~ 65°C  |

#### Item code Description

|          |   |
|----------|---|
| 4931     | Tissue-Tek® DRS™ 2000 with Dryer 220 V, 50/60 Hz                            |
| 2008     | Tissue-Tek® DRS™ Carbon Filter; 2/cs  |
| 4768     | Tissue-Tek® 20-Slide Basket   |
| 4974     | Tissue-Tek® Solution Reservoir 650 mL                                       |
| 4975     | Tissue-Tek® Wash Reservoir 650 mL   |
| 4976     | Tissue-Tek® Reservoir Lid   |
| 4977     | Tissue-Tek® Basket Hook; 10/cs  |
| 4978     | Tissue-Tek® Basket Adapter  |
| 4979     | Tissue-Tek® Wash Station Plug   |
| 4981     | Tissue-Tek® Drain Hose  |
| 4985     | Tissue-Tek® Wash Reservoir Grommet  |
| 4986     | Tissue-Tek® Lid 6 Large Solution Reservoir                                  |
| 4993     | Tissue-Tek® Lid 7 Large Solution Reservoir                                  |
| HIS40614 | Tissue-Tek® Insert for slide basket (for 5 large slides maximum 60 mm wide) |
| 6506     | Tissue-Tek® Exhaust hose assembly 38 mm Ø                                   |
| 6507     | Tissue-Tek® Exhaust hose assembly 75 mm Ø                                   |

SA-4931-UT User Training Tissue-Tek® DRS™ 2000

SC-4931-G Service Agreements Tissue-Tek® DRS™ 2000 Gold

SC-4931-P Service Agreements Tissue-Tek® DRS™ 2000 Platinum

SC-4931-S Service Agreements Tissue-Tek® DRS™ 2000 Silver



20-slide Basket



Basket Hook



Insert for slide basket



## Tissue-Tek® Manual Slide Staining Kit

The Tissue-Tek® Manual Slide Staining Set can be used for histological or cytological staining procedures. The set provides simultaneous use of up to 12 solution wells, each deep enough to permit total immersion of 2.5 to 7.6 cm slides. The tamped metal frame is solvent-resistant, with a snap- locking cover that prevents spills. Ten white poly-propylene dishes and two green solvent-resistant dishes are included. Tight-fitting lids for each solution dish help eliminate evaporation. Comes complete with 12 dishes and lids, a 12-unit metal carrier and a drain tray cover. Accessories for the Tissue-Tek® Manual Slide Staining Set include green and white staining dishes and a 24-Slide Holder with detachable handle.

| Item code | Description  |
|-----------|--|
| 4451      | Tissue-Tek® Manual Slide Staining Set                    |
| 4456      | Tissue-Tek® Staining Dish Green                          |
| 4457      | Tissue-Tek® Staining Dish White                          |
| 4465      | Tissue-Tek® 24-Slide Slide Holder with detachable handle |



## Tissue-Tek® Coverslipping Film

Tissue-Tek® Coverslipping Film is a unique, resin-coated plastic film that eliminates the need for cover glasses and liquid mounting media - which reduces coverslipper maintenance and enables fast coverslipping. The unique flexible film accepts any specimen. The optical characteristics are comparable to those of glass.

| Item code | Description                                |
|-----------|--|
| 4770      | Tissue-Tek® Coverslipping Film 70 m; 5/pcs |



## Tissue-Tek® Glas™ Mounting Media

Sakura Finetek offers high and low viscosity, xylene-based mounting media for glass coverslipping. Furthermore, Tissue-Tek® Glas™ Tissue-Mount™, Tissue-Clear® based mounting medium, is available for xylene free glass coverslipping.

The Tissue-Tek® Glas™ Mounting Media packaging is designed for ease of use with the Tissue-Tek Glas g2 Coverslipper.

| Item code | Description                                   |
|-----------|---|
| 1408N     | Tissue-Tek® Glas™ Mounting Medium, 6 x 500 mL |
| 1410      | Tissue-Tek® Glas™ Pertex, 6 x 500 mL          |
| 1467N     | Tissue-Tek® Glas™ Tissue-Mount™, 6 x 500mL    |

## Tissue-Tek® Barcode Reader for Coverslippers

|            |  |
|------------|--|
| 4743K      | Tissue-Tek Film® Coverslipper Barcode System Retrofit        |
| 6503K      | Tissue-Tek® Glas™ g2 Barcode System Retrofit                 |
| F60-308-00 | Tissue-Tek Film® Barcode System Retrofit Kit (excl.6508)     |
| F60-309-00 | Tissue-Tek® Glas™ g2 Barcode System Retrofit Kit (excl 6508) |





**Tissue-Tek® Glas™ g2 Coverslips & Easy Holder**

The quick way of refilling coverslips in the Tissue-Tek® Glas™ g2, with the convenient prefilled Easy Holder.

| Item code | Description  |
|-----------|--|
| 6415      | Tissue-Tek® Glas™ g2 Coverslips & Easy Holder 24 x 40 mm; 5 x 200/cs |
| 6416      | Tissue-Tek® Glas™ g2 Coverslips & Easy Holder 24 x 50 mm; 5 x 200/cs |
| 6417      | Tissue-Tek® Glas™ g2 Coverslips & Easy Holder 24 x 60 mm; 5 x 200/cs |

**Tissue-Tek® Glas™ Coverslips**

Tissue-Tek® Glas™ Coverslips are ideal for the covering of preparations in microscopic assays in histopathology, medicine, biology and research. These coverslips are borosilicate glass with hydrolytic class of 1. The coverslips can be used in with the Tissue-Tek® Glas™ g2 Coverslipper.

The thickness is roughly 0,13 – 0,17 mm and is packed in 100 piece boxes and are manufactured according to the international standard ISO 8225/1. The coverslips are available in 4 different lengths: 24x 40 mm, 24 x 50 mm, 24 x 55 mm and 24 x 60 mm. The coverslips are supplied in volumes of 1000; 10 packs of 100 coverslips.

| Item code | Description   |
|-----------|---|
| 9579      | Tissue-Tek® Glas™ Coverslips 24 x 55 mm, 10 x 100/pcs |
| 9580      | Tissue-Tek® Glas™ Coverslips 24 x 40 mm, 10 x 100/pcs |
| 9581      | Tissue-Tek® Glas™ Coverslips 24 x 50 mm, 10 x 100/pcs |
| 9582      | Tissue-Tek® Glas™ Coverslips 24 x 60 mm, 10 x 100/pcs |



## 7. Imaging

VisionTek® Live Digital Microscope



## VisionTek® Live Digital Microscope



### VisionTek® Live Digital Microscope

Bringing live routine microscopy to the new digital world, Sakura Finetek proudly introduces: VisionTek® live digital microscope.

This high-end motorised, digital microscope captures real-time images, for live viewing and precise measurements, all within seconds. The live multi-view mode is perfect for complex cases, displaying multiple slides and stains on one screen. Live sharing of images has never been easier; the large, high-definition screen displays extensive details, which can be viewed alone or together.

The snapshot option is a powerful tool for creating instant, high resolution pictures of single slide or multi-views, which can be used directly in presentations.

The VisionTek is a live digital microscope including scanner capabilities, for scanning whole and partial slides.

The pathologist now has complete control of the entire recording process.

### VisionTek optimises live routine microscopy:

- Facilitates easy and accurate diagnoses
- Share live images
- Direct consulting
- User determines what and when to archive

### Specifications

#### Microscope Frame

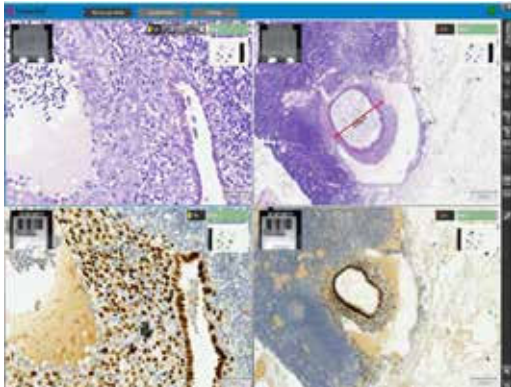
|                  |  |
|------------------|--|
| Illuminator      | Bright field Koehler LED Illumination        |
| Objective lenses | Carl Zeiss EC Plan-Neofluar<br>2.5x/0.075    |
|                  | Carl Zeiss EC Plan-Neofluar 10x/0.3          |
|                  | Carl Zeiss EC Plan-Neofluar 20x/0.5          |
| Motorised stage  | Motorised XY stage with<br>automatic control |
|                  | Automated lens changer                       |
| Focusing         | Motorised automatic and manually<br>focus    |

#### Digital camera

|                    |   |
|--------------------|---|
| CCD camera         | 4.1M pixel (2336 x 1752 px;<br>Px size 5,5 µm);<br>high sensitivity and high resolution<br>camera |
| Live image display | 16 frames/sec   |

### Item code Description

|            |   |
|------------|---|
| 9002       | VisionTek® Live Digital Microscope including: <ul style="list-style-type: none"> <li>• Windows 7 x 64bit PC</li> <li>• 24 inch High Resolution monitor (WUXGA)</li> <li>• 2 VisionTek® Slide Carriers</li> <li>• QWERTY Keyboard and Mouse</li> </ul> |
| 9011       | VisionTek® Slide Carrier, 4 slides each   |
| SA-9002-UT | User Training VisionTek®  |
| SC-9002-G  | Service Agreements VisionTek® Gold  |
| SC-9002-P  | Service Agreements VisionTek® Platinum  |
| SC-9002-S  | Service Agreements VisionTek® Silver  |



## VisionTek DIAGNOSIS

For precise and expert diagnosis a detailed, crystal sharp image is essential. Through the high quality objectives and cameras, a superb live image is created and presented on the widescreen monitor.

With live images diagnostic tools like real-time annotations, such as distances and area measurements, can be used, without the need to save the image first. In addition to a detailed single live image, there is the possibility to show a multi-view of several live images, together in one screen. This unique feature provides the possibility of presenting different stains, of the same tissue, in one overview. As a result of this direct comparison, live diagnosis of complex cases is simplified and the time to diagnosis is dramatically reduced.

## VisionTek SHARE

Images can be viewed by multiple participants on the same high resolution, making face-to-face education direct and more personal than using a multihead microscope. High resolution snapshots of single or multi-view screens are made, just by the click of your mouse.

## VisionTek CONSULT

Some difficult and complex cases need an expert or second opinion. When this colleague is within the premises, consulting is easy: the high definition screen makes discussing and diagnosing cases together extremely easy. In many cases the expert colleague will not be in the same department. With the VisionTek live images can be shared with remote colleagues anywhere: on another floor, building, city or even continent.

## VisionTek ARCHIVE

With the VisionTek the pathologist is in full control of the archiving and storing process.

The user decides if there is a need to archive and if so, which slide or specific area of this slide is important to digitally archive. With the VisionTek the pathologist decides exactly why and what to scan, therefore the recorded images stay small, always in focus and manageable.

There are several options that can be used to record the desired area of interest: screenshots, high resolution snapshots, mini-, whole- or partial- and even z-stacked scanned images.

You decide what, when and how to archive.







## 8. Cryotomy

Tissue-Tek Cryo<sub>3</sub>® Flex Microtome/Cryostat

Tissue-Tek® O.C.T.™ Compound



## Tissue-Tek® Cryo<sub>3</sub>® Flex Microtome/Cryostat



### Specifications

#### Dimensions

W x D x H 65 x 75 x 119

**Weight** 173 kg

Chamber Temperature Range -35°C to 0°C

Cryobar® Temperature approx 10°C colder than the Chamber temperature

#### Sectioning speed range

Maximum: sections per minute

Minimum: 2 sections per minute

Specimen Size Round 25, 38 and 55 mm

Specimen Orientation 8° (x and y axis),  
360° (z axis)

Sectioning Range 1 to 99 µ in 1 µ increments

#### Travel Range

Vertical 63 mm

Horizontal 31.75 mm

### Item code Description

6203 Tissue-Tek® Cryo<sub>3</sub>® Flex Cryostat, Basic

6204 Tissue-Tek® Cryo<sub>3</sub>® Flex Cryostat, Disinfection

6205 Tissue-Tek® Cryo<sub>3</sub>® Flex Cryostat, D. Motorised

6211 Tissue-Tek® Cryo<sub>3</sub>® Flex Anti-Roll Rake Assembly

6210 Tissue-Tek® Cryo<sub>3</sub>® Flex Anti-Roll Plate Assembly

6213 + 6214 Tissue-Tek® Cryo<sub>3</sub>® Flex Utility Trays

## Tissue-Tek® Cryo<sub>3</sub>® Flex Microtome/ Cryostat

The Tissue-Tek® Cryo<sub>3</sub>® Flex is the 3rd generation of the trusted Cryo<sub>3</sub> platform for fast sectioning of frozen tissue specimens. This cryostat is equipped with new, innovative features designed to get complete sections faster and to preserve valuable tissue.

Of the new features, the most important is the fine angle adjustment of the 3D Precision Chuck on all 3 axes. It uniquely ensures accurate alignment of the block face to the blade, reduces users' trimming time and preserves patients' specimens. Furthermore, the sturdy chuck retains its position when locked and unlocked, eliminating any time and effort spent realigning the cutting angle.

The Tissue-Tek Cryo<sub>3</sub> Flex is available in three configurations, to meet every laboratories needs and budget demands. No matter which model you choose, you will benefit from time-tested methods, operator simplicity, minimal maintenance and of course renowned Sakura Tissue-Tek reliability.

Contact your local distributor for availability.

## Tissue-Tek® iSupport™ Powered by Sakura

### Item code Description

8022 License Tissue-Tek® iSupport™

8023 License Tissue-Tek® iSupport™ (extra user)



## Tissue-Tek® O.C.T.™ Compound

Tissue-Tek® O.C.T.™ Compound is a formulation of water-soluble glycols and resins, providing a convenient specimen matrix for cryostat sectioning at temperatures of -10°C and below. No residue is left on slides during the staining procedure, eliminating undesirable background staining.

### Item code Description

|      |   |
|------|---|
| 4583 | Tissue-Tek® O.C.T.™ Compound, 12 x 125 mL |
|------|---|

## Consumables and accessories CRYO<sub>3</sub>® Plus

|      |   |
|------|---|
| 5807 | Tissue-Tek® Cryo <sub>3</sub> ® Specimen Holders Small (25 mm), 6/cs  |
| 5808 | Tissue-Tek® Cryo <sub>3</sub> ® Specimen Holders Medium (38 mm), 6/cs |
| 5809 | Tissue-Tek® Cryo <sub>3</sub> ® Specimen Holders Large (55 mm), 6/cs  |
| 5811 | Tissue-Tek® Cryo <sub>3</sub> ® Heat Extractor (Standard)             |
| 5815 | Tissue-Tek® Cryo <sub>3</sub> ® Heat Extractor (Large)                |
| 5819 | Tissue-Tek® Cryo <sub>3</sub> ® 4-Cavity Cryobar Insert               |
| 5820 | Tissue-Tek® Cryo <sub>3</sub> ® 4-Post Cryobar Insert                 |
| 5824 | Tissue-Tek® Cryo <sub>3</sub> ® Utility Tray                          |
| 5825 | Tissue-Tek® Cryo <sub>3</sub> ® Waste Bottle                          |
| 5826 | Tissue-Tek® Cryo <sub>3</sub> ® Vacuum Filter Set                     |
| 5827 | Tissue-Tek® Cryo <sub>3</sub> ® Vacuum Hose Attachment                |
| 5828 | Tissue-Tek® Cryo <sub>3</sub> ® Ozone Lamp                            |
| 5829 | Tissue-Tek® Cryo <sub>3</sub> ® Foot Pedal                            |
| 5831 | Tissue-Tek® Cryo <sub>3</sub> ® Anti-Roll Rake                        |
| 5833 | Tissue-Tek® Cryo <sub>3</sub> ® Steel Knife Holder                    |
| 5834 | Tissue-Tek® Cryo <sub>3</sub> ® Drain Cleaning Brush                  |
| 5835 | Tissue-Tek® Cryo <sub>3</sub> ® Ozone Port Screen                     |
| 5836 | Tissue-Tek® Cryo <sub>3</sub> ® Fluorescent Lamp Assembly             |
| 5837 | Tissue-Tek® Cryo <sub>3</sub> ® Drain Cover                           |
| 5839 | Tissue-Tek® Cryo <sub>3</sub> ® Anti-Roll Plate                       |
| 5840 | Tissue-Tek® Cryo <sub>3</sub> ® Beveled Glass Slides, 2pcs            |
| 4728 | Round Cryomold® Standard, 100/cs                                      |
| 4730 | Round Cryomold® Biopsy, 100/cs  |
| 4557 | Cryomold® Standard 25 x 20 x 5 mm, 100/cs                             |
| 4565 | Cryomold® Biopsy 10 x 10 x 5 mm, 100/cs                               |
| 4566 | Cryomold® Intermediate 15 x 15 x 5 mm, 100/cs                         |



The background of the slide is a blurred photograph of a laboratory. On the left, a white centrifuge is visible with its lid open, showing the rotor and some blue sample tubes. On the right, a male scientist in a white lab coat and blue gloves is working. The overall tone is professional and scientific.

## 9. Cytology

Cyto-Tek® 2500 Cytocentrifuge

## Cyto-Tek® 2500 Cytocentrifuge



### Specifications

#### Dimensions

|                      |  |
|----------------------|--|
| H x W x D:           | 225 x 375 x 490 mm   |
| Height with lid open | 595 mm   |
| Weight               | 11.7 kg  |
| Process capacity     | Up to 12 disposable chambers per process                                 |
| Speed                | Adjustable from 200 to 2,500 rpm (10 rpm increments)                     |
| Programmable times   | 1 second to 99 minutes<br>59 seconds (adjustable in 1-minute increments) |
| Chamber sizes        | 1-, 6-, and 12-mL disposable chambers                                    |
| Number of programs   | 30 programs  |

#### Item code Description

|      |   |
|------|---|
| 4300 | Cyto-Tek® 2500; 100-240 V, 50/60 Hz     |
| 4301 | Cyto-Tek® Chamber Kit 1 mL; 50/pcs      |
| 4326 | Cyto-Tek® 6 / 12 mL Base Holder; 12/pcs |
| 4327 | Cyto-Tek® 6 mL Gasket; 25/pcs           |
| 4328 | Cyto-Tek® 12 mL Fluid Chamber; 12/pcs   |
| 4329 | Cyto-Tek® 1 mL Fluid Chamber; 200/pcs   |
| 4331 | Cyto-Tek® 6 mL Fluid Chamber; 12/pcs    |
| 4333 | Cyto-Tek® 1 mL Filter Paper; 200/pcs    |
| 4334 | Cyto-Tek® 6 / 12 mL Chamber Cap; 25/pcs |
| 4335 | Cyto-Tek® 1 mL Chamber Cap; 200/pcs     |
| 4336 | Cyto-Tek® 1 mL Base Holder; 200/pcs     |
| 4337 | Cyto-Tek® 12 mL Gasket; 25/pcs          |
| 4338 | Cyto-Tek® 6 mL Filter Paper; 500/pcs    |
| 4339 | Cyto-Tek® 12 mL Filter Paper; 100/pcs   |

### Cyto-Tek® 2500 Cytocentrifuge

The Cyto-Tek® 2500 Cytocentrifuge provides optimal cell recovery and advanced preservation of cellular structure in non-gynecological monolayer slide preparation. The 2500 was designed with enhanced features focusing on user safety, including the introduction of a new sealable rotor housing with lid which significantly reduces aerosol exposure. The housing is completely removable and transportable, providing added convenience. Technicians now have the ability to load and unload specimens in vented areas away from the centrifuge, under a fume hood. The Cyto-Tek 2500 Cytocentrifuge has a sleek and modern design and provides the superior clinical performance users have come to expect from Sakura's Cyto-Tek Cytocentrifuges.

Contact your local distributor for availability.



## 10. Archiving

**Tissue-Tek® Lab Aid® Ultra™ Cabinets**

**Tissue-Tek® Uni-Cassette® Filing Cabinets**

**Tissue-Tek® Lab Aid® Filing Cabinet System**





## Tissue-Tek® Lab Aid® Ultra™ II Cabinets

The Tissue-Tek® Lab Aid® Ultra™ II is a large capacity storage unit for storing slides and blocks equipped with locking feature for security. The maximum storage capacity is approximately 96.000 slides or 22.000 blocks, or anything in between if both the slides and blocks are stored in the same cabinet. The dimension of the cabinet is: W x D x H 595 x 713 x 1100 mm.

| Item code | Description   |
|-----------|---|
| 3990      | Tissue-Tek® Lab Aid® Ultra™ II Cabinet                              |
| 3981      | Tissue-Tek® Lab Aid® Ultra™ II Tray; 32/pcs                         |
| 3982      | Tissue-Tek® Lab Aid® Ultra™ II Tray with lid (4 row); 20/pcs        |
| 3983      | Tissue-Tek® Lab Aid® Ultra™ II Drawer Identification Strip; 100/pcs |
| 3980      | Tissue-Tek® Lab Aid® Ultra™ II Trolley                              |
| 3984      | Tissue-Tek® Lab Aid® Ultra™ Coding Strips Red; 100/pcs              |
| 3985      | Tissue-Tek® Lab Aid® Ultra™ Coding Strips Green; 100/pcs            |
| 3986      | Tissue-Tek® Lab Aid® Ultra™ Coding Strips Yellow; 100/pcs           |
| 3987      | Tissue-Tek® Lab Aid® Ultra™ Coding Strips Blue; 100/pcs             |
| 3988      | Tissue-Tek® Lab Aid® Ultra™ Coding Strips Brown; 100/pcs            |
| 3999      | Lock Key  |



## Tissue-Tek® Uni-Cassette® Filing Cabinets

The Tissue-Tek Uni-Cassette® Filing Cabinet provides a permanent storage and reference unit for blocks embedded in Tissue-Tek® Embedding Rings and Cassettes. The Filing Cabinets are stackable and accommodate 1.000 rings or 1.500 cassettes. One-piece construction eliminates hinges and doors and provides dust-free storage. Includes six impact-resistant plastic drawers with identification area.

| Item code | Description                  |
|-----------|------------------------------|
| 4192      | Uni-Cassette® Filing Cabinet |



## Tissue-Tek® Lab Aid® Filing Cabinet System

The Tissue-Tek® Lab Aid® Filing Cabinet System allows convenient storage and retrieval of microscopic slides or transparencies. The 25 mm drawer section is designed to hold 26 x 76 mm microscopic slides. Each section contains 14 drawers, with a capacity of 465 slides per drawer. The 50 mm drawer section is designed to hold 50 x 50 mm transparencies or 76 x 50 mm microscopic slides. The drawer section is complete with 7 drawers, which will accommodate 271 slides per drawer. The system is constructed of welded steel for durability and requires 0.23 m<sup>2</sup> of floor space. Slide backstops easily attach to the inside of the drawers to hold slides in place when drawer is not full. Also available is a slide liner (spring) to hold slides upright during drying process.

| Item code | Description   |
|-----------|---|
| 4010      | Tissue-Tek® Lab Aid® Floor Base, Green                                    |
| 4011      | Tissue-Tek® Lab Aid® Floor Base, Beige                                    |
| 4012      | Tissue-Tek® Lab Aid® Top Panel, Green                                     |
| 4013      | Tissue-Tek® Lab Aid® Top Panel, Beige                                     |
| 4014      | Tissue-Tek® Lab Aid® Drawer Section 14 x 25 x 76 mm, Green (6.500 slides) |
| 4015      | Tissue-Tek® Lab Aid® Drawer Section 14 x 25 x 76 mm, Beige (6.500 slides) |
| 4016      | Tissue-Tek® Lab Aid® Drawer Section 7 x 76 x 50 mm, Green (1.897 slides)  |
| 4017      | Tissue-Tek® Lab Aid® Drawer Section 7 x 76 x 50 mm, Beige (1.897 slides)  |
| 4018      | Tissue-Tek® Lab Aid® 25 mm Backstop, Green                                |
| 4019      | Tissue-Tek® Lab Aid® 25 mm Backstop, Beige                                |
| 4020      | Tissue-Tek® Lab Aid® Slide Liner  |
| 4027      | Tissue-Tek® Lab Aid® 25 mm Drawer Vertical Filing, Green (465 slides)     |
| 4038      | Tissue-Tek® Lab Aid® Paraffin Block Unit Section, Beige (1.000 blocks)    |

## Notes



SAKURA





# Index Product Catalogue

## 4 Sakura Services

## 9 Grossing

### Grossing Stations

- 10 Tissue-Tek® Accu-Edge® Elevating Grossing Station
- 10 Tissue-Tek® Accu-Edge® Countertop Work Station
- 10 Tissue-Tek® Accu-Edge® Pathology Work Station

### Grossing Tools System

- 12 Tissue-Tek® Accu-Edge® Grossing Board
- 12 Tissue-Tek® Accu-Edge® Grossing Forks
- 12 Tissue-Tek® FormaGO®

### Grossing & Trimming

- 13 Tissue-Tek® Accu-Edge® Trimming Knife Series
- 13 Tissue-Tek® Accu-Edge® Dissecting Scalpel Series
- 13 Tissue-Tek® Accu-Edge® Autopsy Knife Series
- 13 Tissue-Tek® Accu-Edge® Safety Trimming Knife Handle & Blades Series
- 14 Tissue-Tek® Accu-Edge® Replaceable Blade Scissors

## 15 Identification

### Multi Cassette Printer

- 16 Tissue-Tek® AutoWrite® Cassette Printer

### Stacked Cassettes

- 18 Stacks Tissue-Tek® Paraform® Frames
- 18 Stacks Tissue-Tek® Uni-Cassette®
- 18 Stacks Tissue-Tek® Embedding Cassette

## 19 Tissue Processing

### Continuous Rapid Tissue Processors

- 20 Tissue-Tek Xpress® x120

### Vacuum Infiltration Processors

- 22 Tissue-Tek VIP® 6 AI
- 24 Histo-Tek® VP1™
- 25 Tissue-Tek® Tissue-Clear® Xylene Substitute
- 25 Tissue-Tek® Paraffin Wax

## 27 Tissue Embedding

### Automated Embedding System

- 28 Tissue-Tek AutoTEC® a120 & Tissue-Tek® Paraform®
- 29 Tissue-Tek® Paraform® Cassettes
- 31 Tissue-Tek® Paraform® Tissue Orientation Gels

### Tissue Embedding Console System

- 32 Tissue-Tek® TEC™ 5
- 32 Tissue-Tek® TEC™ Plus Cryo Console
- 34 Tissue-Tek® Cassettes
- 34 Tissue-Tek® Biopsy Bags
- 36 Tissue-Tek® Base Mold System



## 39 Microtomy

### Automated Microtome

40 Tissue-Tek AutoSection®

### Rotary Microtome

42 Accu-Cut® SRM™ 200

### Slides & Coverslips

- 43 Tissue-Tek® Glas™ Microscope Slides
- 43 Tissue-Tek® Autowrite® Non-Adhesive Slides
- 43 Tissue-Tek® Autowrite® Adhesive Slides
- 44 Tissue-Tek® Autowrite® Advanced Adhesive Slides
- 44 Tissue-Tek® SmartWrite® Slides
- 44 Tissue-Tek® Glas™ Coverslips
- 44 Tissue-Tek® Super Mega Slides & Coverslips
- 45 Tissue-Tek® Glas™ g2 Coverslips & Easy Holder
  
- 45 Accu-Edge® Disposable Microtome Blades
- 45 Tissue-Tek® Cold Plate

## 47 Staining & Coverslipping

### Automated Slide Stainer & Coverslipper

- 48 Tissue-Tek Prisma® Plus & Tissue-Tek Film®
- 52 Tissue-Tek Prisma® Plus & Tissue-Tek® Glas™ g2

### Random Access & Multiple Slide Stainer

- 56 Tissue-Tek® DRS™ 2000
- 57 Tissue-Tek® Manual Slide Staining Kit
- 57 Tissue-Tek Film®
- 57 Tissue-Tek® Mounting Media
- 58 Tissue-Tek® Glas™ g2 Coverslips & Easy Holder
- 58 Tissue-Tek® Glas™ Coverslips

## 59 Imaging

- 60 VisionTek® Live Digital Microscope

## 63 Cryotomy

- 64 Tissue-Tek® Cryo<sub>3</sub>® Flex Microtome/Cryostat
- 65 Tissue-Tek® O.C.T.™ Compound

## 67 Cytology

- 68 Tissue-Tek® Cyto-Tek® 2500 Cyto-centrifuge

## 69 Archiving

- 70 Tissue-Tek® Lab Aid® Ultra™ II Cabinets
- 70 Tissue-Tek® Uni-Cassette® Filing Cabinets
- 70 Tissue-Tek® Lab Aid® Filing Cabinet System

# Index - alphabetical order

|          |   |    |
|----------|---|----|
| <b>A</b> | Tissue-Tek® <b>AutoTEC® a120</b> Automated Embedding System               | 28 |
| <b>B</b> | Tissue-Tek® <b>Base</b> Mold System                                       | 36 |
|          | Tissue-Tek® Biopsy <b>Bags</b>  | 34 |
|          | <b>Blades</b>   |    |
|          | Accu-Edge® Disposable Microtome <b>Blades</b>                             | 45 |
| <b>C</b> | <b>Cabinet Systems</b>  |    |
|          | Tissue-Tek® Lab Aid® Filing <b>Cabinet</b> System                         | 70 |
|          | Tissue-Tek® Lab Aid® Ultra™ II <b>Cabinets</b>                            | 70 |
|          | Tissue-Tek® Uni-Cassette® Filing <b>Cabinets</b>                          | 70 |
|          | <b>Cassettes</b>  |    |
|          | Tissue-Tek® Paraform® <b>Cassettes</b>                                    | 29 |
|          | Tissue-Tek® <b>Cassettes</b>  | 33 |
|          | <b>Coverslipping</b>  |    |
|          | Tissue-Tek® Glas™ <i>g2</i> <b>Coverslips</b> & Easy Holder               | 58 |
|          | Tissue-Tek® Glas™ <b>Coverslips</b>                                       | 58 |
|          | Tissue-Tek® Super Mega Slides & <b>Coverslips</b>                         | 44 |
|          | Tissue-Tek Prisma® <i>Plus</i> & Film®                                    | 48 |
|          | Tissue-Tek Prisma® <i>Plus</i> & Glas™ <i>g2</i>                          | 52 |
|          | Tissue-Tek® <b>Coverslipping</b> Film                                     | 57 |
|          | Tissue-Tek® Cyto-Tek® 2500 <b>Cytocentrifuge</b>                          | 68 |
|          | Tissue-Tek® <b>Cold</b> Plate   | 45 |
|          | Tissue-Tek® <b>Cryo<sub>3</sub></b> ® Flex Microtome/Cryostat             | 64 |
| <b>F</b> | Tissue-Tek® FormaGO®  | 12 |
| <b>G</b> | <b>Grossing Stations</b>  |    |
|          | Tissue-Tek® Accu-Edge® Countertop Work Station ( <b>Grossing</b> Station) | 10 |
|          | Tissue-Tek® Accu-Edge® Elevating <b>Grossing</b> Station                  | 10 |
|          | Tissue-Tek® Accu-Edge® <b>Grossing</b> Board                              | 12 |
|          | Tissue-Tek® Accu-Edge® <b>Grossing</b> Forks                              | 12 |
|          | Tissue-Tek® Accu-Edge® Pathology Work Station ( <b>Grossing</b> Station)  | 10 |
| <b>K</b> | Accu-Edge® Autopsy <b>Knife</b> Series                                    | 13 |
|          | Accu-Edge® Safety Trimming <b>Knife</b> Handle & Blades Series            | 13 |
|          | Accu-Edge® Trimming <b>Knife</b> Series                                   | 13 |
| <b>M</b> | VisionTek® live digital <b>Microscope</b>                                 | 60 |

|          |  |    |
|----------|--|----|
|          | <b>Microtomes</b>  |    |
|          | Accu-Cut® SRM™ 200 <b>Microtome</b>  | 42 |
|          | Tissue-Tek AutoSection® Automated <b>Microtome</b>   | 40 |
|          | Tissue-Tek® <b>Mounting Media</b>  | 57 |
| <b>O</b> | Tissue-Tek® <b>O.C.T.</b> ™ Compound   | 65 |
|          | Tissue-Tek® Paraform® Tissue <b>Orientation Gels</b>                                       | 31 |
| <b>P</b> | Tissue-Tek® <b>Paraffin Wax</b>  | 25 |
|          | <b>Printers</b>  |    |
|          | Tissue-Tek® AutoWrite® Cassette <b>Printer</b>   | 16 |
|          | <b>Processors</b>  |    |
|          | Tissue-Tek® VIP® 6 AI <b>Processor</b>   | 22 |
|          | Histo-Tek® VP1™ Jr. <b>Processor</b>   | 24 |
|          | Tissue-Tek Xpress® x120 Continuous Rapid Tissue <b>Processor</b>                           | 20 |
| <b>S</b> | Sakura <b>Services</b>   | 4  |
|          | Accu-Edge® Dissecting <b>Scalpel Series</b>  | 13 |
|          | Accu-Edge® Replaceable Blade <b>Scissors</b>   | 14 |
|          | <b>Slides</b>  |    |
|          | Tissue-Tek® AutoWrite® Adhesive <b>Slides</b>  | 43 |
|          | Tissue-Tek® AutoWrite® Advanced Adhesive <b>Slides</b>                                     | 44 |
|          | Tissue-Tek® Glas™ Microscope <b>Slides</b>   | 43 |
|          | Tissue-Tek® AutoWrite® Non-Adhesive <b>Slides</b>  | 43 |
|          | Tissue-Tek® SmartWrite® <b>Slides</b>  | 44 |
|          | <b>Staining</b>  |    |
|          | Tissue-Tek® DRS™ 2000 Multiple Slide <b>Stainer</b>  | 56 |
|          | Tissue-Tek Prisma® <i>Plus</i> & Tissue-Tek Film® <b>Stainer</b> & Coverslipper            | 48 |
|          | Tissue-Tek Prisma® <i>Plus</i> & Tissue-Tek® Glas™ <i>g2</i> <b>Stainer</b> & Coverslipper | 52 |
|          | Tissue-Tek® Manual Slide <b>Staining Kit</b>   | 57 |
| <b>T</b> | Tissue-Tek® TEC™ 5   | 32 |
|          | Tissue-Tek® TEC™ Plus Cryo Console   | 32 |
| <b>X</b> | Tissue-Tek® Tissue-Clear® <b>Xylene Substitute</b>   | 25 |



Visit us at [sakura.eu](http://sakura.eu)



# Colofon Product Catalogue

For information about your local distributor,  
please visit our website [www.sakura.eu](http://www.sakura.eu)

Chamber of Commerce Leiden 28065449  
The Bank of Tokyo, Amsterdam 63.56.12.283  
IBAN: NL32BOTK0635612283 - BIC: BOTKNL2X  
V.A.T. NL 8032.73.769 B01

## Design

VRHL Content en Creatie,  
Alphen aan den Rijn, [www.vrhl.nl](http://www.vrhl.nl)

January 2018/ Volume 12



Please visit our website [sakura.eu](http://sakura.eu)

Sakura Finetek Europe B.V., Flemingweg 10A, 2408 AV Alphen aan den Rijn,  
P.O. Box 362, 2400 AJ Alphen aan den Rijn, The Netherlands

