

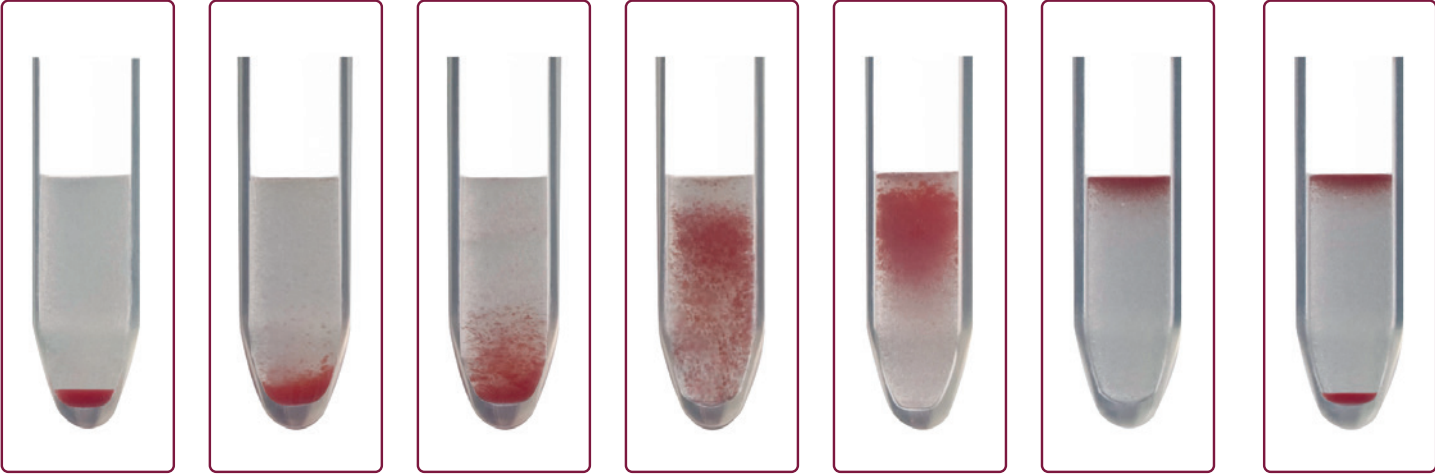


ID-System

Quick Guide



ID-Card Interpretation



-

+

+

++

+++

+++++

dp

(double population)

ID-System Quick Guide

1	Blood Grouping	1/01 – 1/22
2	Phenotyping Rh/K	2/01 – 2/04
3	Typing of Partial RhD	3/01 – 3/04
4	Antibody Screening	4/01 – 4/20
5	Antibody Identification	5/01 – 5/06
6	Compatibility Tests	6/01 – 6/08
7	Direct Antiglobulin Test (DAT)	7/01 – 7/10
8	Type and Screen	8/01 – 8/02
9	Reverse Grouping with Antibody Screening	9/01 – 9/06
10	Antigen Profiles	10/01 – 10/04
11	Single Antigen Testing	11/01 – 11/18

Blood Grouping

1/01 and 1/02	Blood Grouping ABO and RhD	Human Antibodies
1/03 and 1/04	Blood Grouping ABO and RhD	Monoclonal Antibodies
1/05 and 1/06	Blood Grouping ABO and RhD/Newborns	Human Antibodies
1/07 and 1/08	Blood Grouping ABO and RhD/Newborns	Monoclonal Antibodies
1/09 and 1/10	Blood Grouping ABD Confirmation	Human Antibodies
1/11 and 1/12	Blood Grouping ABD Confirmation	Monoclonal Antibodies
1/13 and 1/14	Blood Grouping ABO and RhD Combined with Reverse Grouping	Human Antibodies
1/15 and 1/16	Blood Grouping ABO and RhD Combined with Reverse Grouping	Monoclonal Antibodies
1/17 and 1/18	Reverse Grouping	A ₁ -B
1/19 and 1/20	Reverse Grouping	A ₁ -A ₂ -B/A ₁ -B-O
1/21 and 1/22	Reverse Grouping	A ₁ -A ₂ -B-O



Blood Grouping ABO and RhD

Human Antibodies

Preparing the Sample Suspension

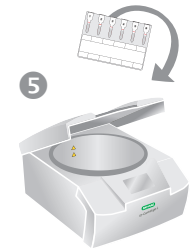
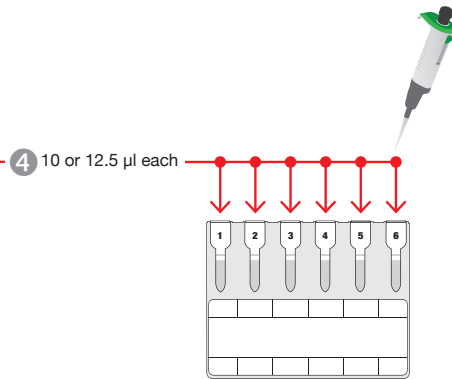
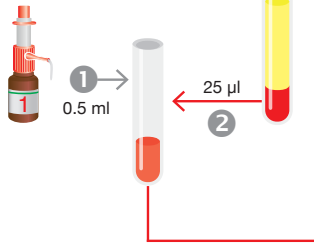
Incubation

Pipetting (1 test per ID-Card)

Centrifugation

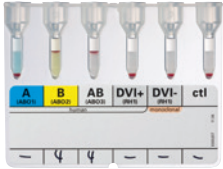
ID-Diluent 1

Packed cells



6 Read the reaction(s)

Product Pictures



ABO/RhD
(Id-n°: 50031)



ID-Diluent 1
(Id-n°: 05751)
100 ml/500 ml

Ordering Information

Catalog # Description

ABO/RhD

001334	A, B, AB, DVI+, DVI-, ctl (Id-n°: 50031), 4 x 12
001337	A, B, AB, DVI+, DVI-, ctl (Id-n°: 50031), 24 x 12
001336	A, B, AB, DVI+, DVI-, ctl (Id-n°: 50031), 60 x 12
001335	A, B, AB, DVI+, DVI-, ctl (Id-n°: 50031), 112 x 12

ID-Diluent 1

009160	Modified Bromelin solution for red cell suspensions and enzyme tests (Id-n°: 05751), 2 x 100 ml
009180	Modified Bromelin solution for red cell suspensions and enzyme tests (Id-n°: 05751), 1 x 500 ml



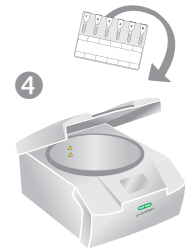
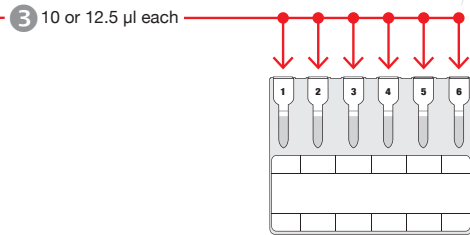
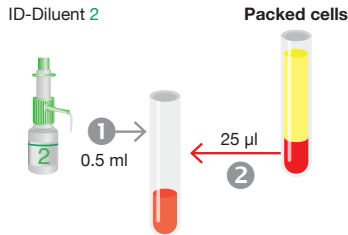
Blood Grouping ABO and RhD

Monoclonal Antibodies

Preparing the Sample Suspension

Pipetting (1 test per ID-Card)

Centrifugation



5 Read the reaction(s)

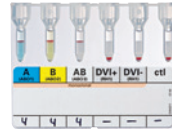
Product Pictures



DiaClon ABO/Rh for Patients
(ld-n°: 50012)



DiaClon ABO/Rh for Donors
(ld-n°: 51011)



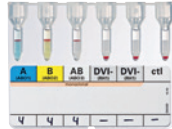
DiaClon ABO/D
(ld-n°: 50481)



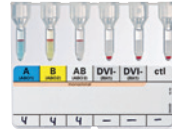
DiaClon ABO/D + DAT
(ld-n°: 50492)



DiaClon ABO/DVI+/DVI- + DAT
(ld-n°: 51160)



DiaClon ABO/DVI- for Patients
(ld-n°: 52040)



DiaClon ABO/DVI-
(ld-n°: 52050)



ID-Diluent 2
(ld-n°: 05761)
100 ml/500 ml

Ordering Information

Catalog # Description

DiaClon ABO/Rh for Patients

001044	A, B, AB, DVI-, CDE, ctl (ld-n°: 50012), 4 x 12
001043	A, B, AB, DVI-, CDE, ctl (ld-n°: 50012), 24 x 12
001046	A, B, AB, DVI-, CDE, ctl (ld-n°: 50012), 60 x 12
001045	A, B, AB, DVI-, CDE, ctl (ld-n°: 50012), 112 x 12

DiaClon ABO/Rh for Donors

001037	A, B, AB, DVI+, CDE, ctl (ld-n°: 51011), 4 x 12
001033	A, B, AB, DVI+, CDE, ctl (ld-n°: 51011), 24 x 12
001039	A, B, AB, DVI+, CDE, ctl (ld-n°: 51011), 60 x 12
001038	A, B, AB, DVI+, CDE, ctl (ld-n°: 51011), 112 x 12

DiaClon ABO/D

001324	A, B, AB, DVI+, DVI-, ctl (ld-n°: 50481), 4 x 12
001323	A, B, AB, DVI+, DVI-, ctl (ld-n°: 50481), 24 x 12
001326	A, B, AB, DVI+, DVI-, ctl (ld-n°: 50481), 60 x 12
001325	A, B, AB, DVI+, DVI-, ctl (ld-n°: 50481), 112 x 12

DiaClon ABO/D + DAT

001344	A, B, DVI-, DVI-, ctl, DAT (ld-n°: 50492), 4 x 12
001347	A, B, DVI-, DVI-, ctl, DAT (ld-n°: 50492), 24 x 12
001346	A, B, DVI-, DVI-, ctl, DAT (ld-n°: 50492), 60 x 12
001345	A, B, DVI-, DVI-, ctl, DAT (ld-n°: 50492), 112 x 12

DiaClon ABO/DVI+/DVI- + DAT

001374	A, B, DVI+, DVI-, ctl, DAT (ld-n°: 51160), 4 x 12
001376	A, B, DVI+, DVI-, ctl, DAT (ld-n°: 51160), 60 x 12

DiaClon ABO/DVI- for Patients

001294	A, B, AB, DVI-, DVI-, ctl (ld-n°: 52040), 4 x 12
001297	A, B, AB, DVI-, DVI-, ctl (ld-n°: 52040), 24 x 12
001296	A, B, AB, DVI-, DVI-, ctl (ld-n°: 52040), 60 x 12

DiaClon ABO/DVI-

001424	A, B, AB, DVI-, DVI-, ctl (ld-n°: 52050), 4 x 12
001427	A, B, AB, DVI-, DVI-, ctl (ld-n°: 52050), 24 x 12
001425	A, B, AB, DVI-, DVI-, ctl (ld-n°: 52050), 112 x 12

ID-Diluent 2

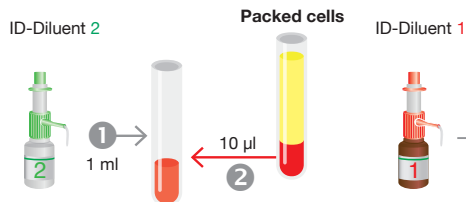
009260	Modified LISS for red cell suspensions (ld-n°: 05761), 2 x 100 ml
009280	Modified LISS for red cell suspensions (ld-n°: 05761), 1 x 500 ml



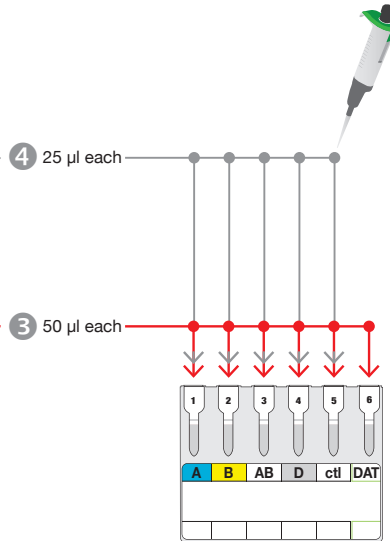
Blood Grouping ABO and RhD/Newborns

Human Antibodies

Preparing the Sample Suspension



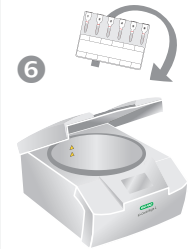
Pipetting (1 test per ID-Card)



Incubation



Centrifugation



7 Read the reaction(s)

Product Pictures



ABO/Rh for Newborns
(Id-n°: 50061)



ID-Diluent 1
(Id-n°: 05751)
100 ml/500 ml



ID-Diluent 2
(Id-n°: 05761)
100 ml/500 ml

Ordering Information

Catalog # Description

ABO/Rh for Newborns

001017	A, B, AB, D, cti/DAT (Id-n°: 50061), 4 x 12
001020	A, B, AB, D, cti/DAT (Id-n°: 50061), 24 x 12
001018	A, B, AB, D, cti/DAT (Id-n°: 50061), 60 x 12
001019	A, B, AB, D, cti/DAT (Id-n°: 50061), 112 x 12

ID-Diluent 1

009160	Modified Bromelin solution for red cell suspensions and enzyme tests (Id-n°: 05751), 2 x 100 ml
009180	Modified Bromelin solution for red cell suspensions and enzyme tests (Id-n°: 05751), 1 x 500 ml

ID-Diluent 2

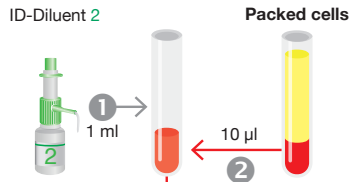
009260	Modified LISS for red cell suspensions (Id-n°: 05761), 2 x 100 ml
009280	Modified LISS for red cell suspensions (Id-n°: 05761), 1 x 500 ml



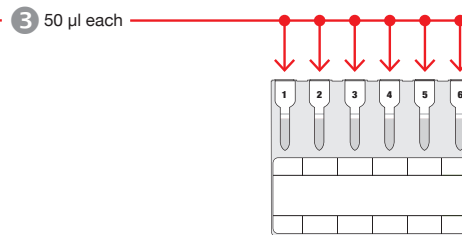
Blood Grouping ABO and RhD/Newborns

Monoclonal Antibodies

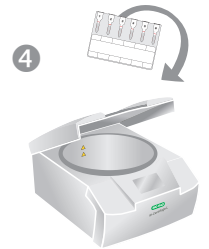
Preparing the Sample Suspension



Pipetting (1 test per ID-Card)



Centrifugation



5 Read the reaction(s)

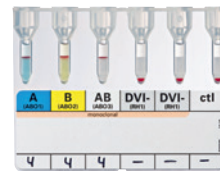
Product Pictures



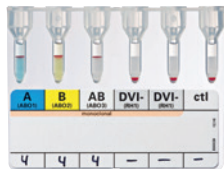
**DiaClon ABO/Rh
for Newborns DVI+**
(Id-n°: 50961)



**DiaClon ABO/Rh
for Newborns DVI-**
(Id-n°: 50071)



**DiaClon ABO/DVI-
for Patients**
(Id-n°: 52040)



DiaClon ABO/DVI-
(Id-n°: 52050)



ID-Diluent 2
(Id-n°: 05761)
100 ml/500 ml

Ordering Information

Catalog # Description

DiaClon ABO/Rh for Newborns DVI+

001047	A, B, AB, DVI+, ctl, DAT (Id-n°: 50961), 4 x 12
001048	A, B, AB, DVI+, ctl, DAT (Id-n°: 50961), 24 x 12
001049	A, B, AB, DVI+, ctl, DAT (Id-n°: 50961), 60 x 12
001050	A, B, AB, DVI+, ctl, DAT (Id-n°: 50961), 112 x 12

DiaClon ABO/Rh for Newborns DVI-

001027	A, B, AB, DVI-, ctl, DAT (Id-n°: 50071), 4 x 12
001030	A, B, AB, DVI-, ctl, DAT (Id-n°: 50071), 24 x 12
001028	A, B, AB, DVI-, ctl, DAT (Id-n°: 50071), 60 x 12
001029	A, B, AB, DVI-, ctl, DAT (Id-n°: 50071), 112 x 12

DiaClon ABO/DVI- for Patients

001294	A, B, AB, DVI-, DVI-, ctl (Id-n°: 52040), 4 x 12
001297	A, B, AB, DVI-, DVI-, ctl (Id-n°: 52040), 24 x 12
001296	A, B, AB, DVI-, DVI-, ctl (Id-n°: 52040), 60 x 12

DiaClon ABO/DVI-

001424	A, B, AB, DVI-, DVI-, ctl (Id-n°: 52050), 4 x 12
001427	A, B, AB, DVI-, DVI-, ctl (Id-n°: 52050), 24 x 12
001425	A, B, AB, DVI-, DVI-, ctl (Id-n°: 52050), 112 x 12

ID-Diluent 2

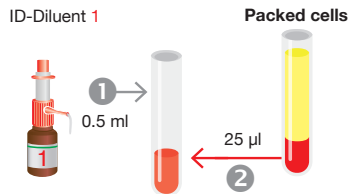
009260	Modified LISS for red cell suspensions (Id-n°: 05761), 2 x 100 ml
009280	Modified LISS for red cell suspensions (Id-n°: 05761), 1 x 500 ml



Blood Grouping ABD Confirmation

Human Antibodies

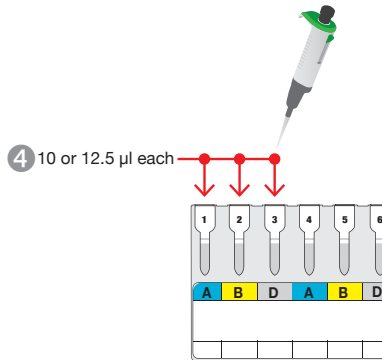
Preparing the Sample Suspension



Incubation



Pipetting (2 tests per ID-Card)



Centrifugation



Product Pictures



ABD-Confirmation
(Id-n°: 50041)



ID-Diluent 1
(Id-n°: 05751)
100 ml/500 ml

Ordering Information

Catalog # Description

ABD-Confirmation

001114	A, B, D/A, B, D (Id-n°: 50041), 4 x 12
001117	A, B, D/A, B, D (Id-n°: 50041), 24 x 12
001116	A, B, D/A, B, D (Id-n°: 50041), 60 x 12
001115	A, B, D/A, B, D (Id-n°: 50041), 112 x 12

ID-Diluent 1

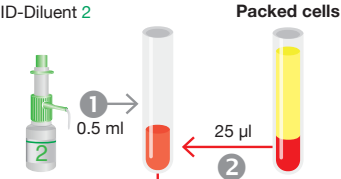
009160	Modified Bromelin solution for red cell suspensions and enzyme tests (Id-n°: 05751), 2 x 100 ml
009180	Modified Bromelin solution for red cell suspensions and enzyme tests (Id-n°: 05751), 1 x 500 ml



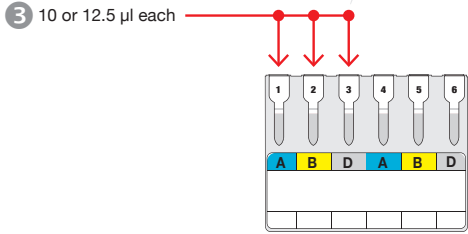
Blood Grouping ABD Confirmation

Monoclonal Antibodies

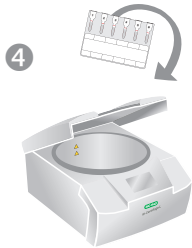
Preparing the Sample Suspension



Pipetting (2 tests per ID-Card)



Centrifugation



5 Read the reaction(s)

Product Pictures



DiaClon ABD-Confirmation for Patients
(Id-n°: 50053)



DiaClon ABD-Confirmation for Donors
(Id-n°: 51051)



ID-Diluent 2
(Id-n°: 05761)
100 ml/500 ml

Ordering Information

Catalog # Description

DiaClon ABD-Confirmation for Patients

001254	A, B, DVI-, A, B, DVI-	(Id-n°: 50053), 4 x 12
001257	A, B, DVI-, A, B, DVI-	(Id-n°: 50053), 24 x 12
001256	A, B, DVI-, A, B, DVI-	(Id-n°: 50053), 60 x 12
001255	A, B, DVI-, A, B, DVI-	(Id-n°: 50053), 112 x 12

DiaClon ABD-Confirmation for Donors

001134	A, B, DVI+/A, B, DVI+	(Id-n°: 51051), 4 x 12
001133	A, B, DVI+/A, B, DVI+	(Id-n°: 51051), 24 x 12
001136	A, B, DVI+/A, B, DVI+	(Id-n°: 51051), 60 x 12
001135	A, B, DVI+/A, B, DVI+	(Id-n°: 51051), 112 x 12

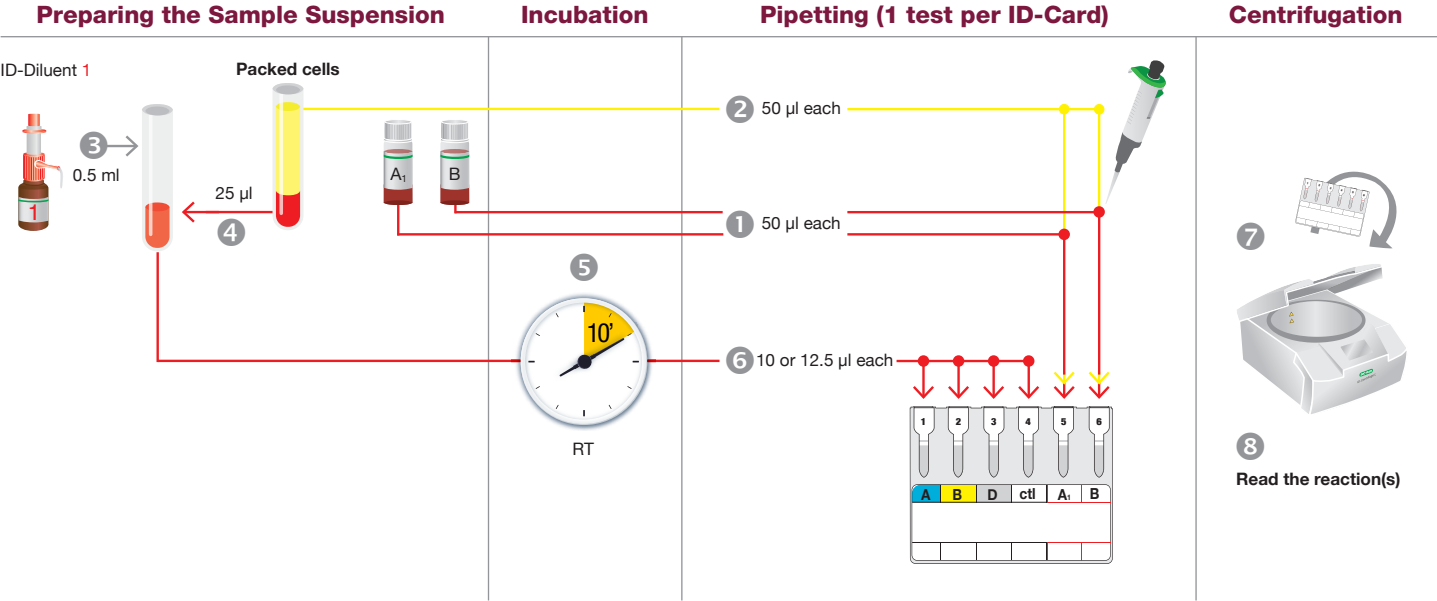
ID-Diluent 2

009260	Modified LISS for red cell suspensions (Id-n°: 05761), 2 x 100 ml
009280	Modified LISS for red cell suspensions (Id-n°: 05761), 1 x 500 ml

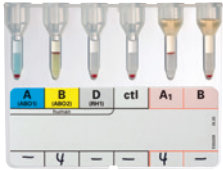
Visit www.bio-rad.com/immunohematology for more information ■ *This Quick Guide does not replace the corresponding box-insert!*

© Bio-Rad Laboratories, Inc.

Blood Grouping ABO and RhD Combined with Reverse Grouping Human Antibodies



Product Pictures



ABO/D + Reverse Grouping
(Id-n°: 50081)



ID-DiaCell ABO
(Id-n°: 45092)



ID-Diluent 1
(Id-n°: 05751)
100 ml/500 ml

Ordering Information

Catalog # Description

ABO/D + Reverse Grouping

001127 A, B, D, cti/A₁, B (Id-n°: 50081) human, 4 x 12
001131 A, B, D, cti/A₁, B (Id-n°: 50081) human, 24 x 12
001128 A, B, D, cti/A₁, B (Id-n°: 50081) human, 60 x 12
001129 A, B, D, cti/A₁, B (Id-n°: 50081) human, 112 x 12

ID-DiaCell ABO

003624 Set of 2 vials A₁, B (Id-n°: 45092), 2 x 10 ml

ID-Diluent 1

009160 Modified Bromelin solution for red cell suspensions and enzyme tests
(Id-n°: 05751), 2 x 100 ml
009180 Modified Bromelin solution for red cell suspensions and enzyme tests
(Id-n°: 05751), 1 x 500 ml

Blood Grouping ABO and RhD Combined with Reverse Grouping Monoclonal Antibodies

Preparing the Sample Suspension

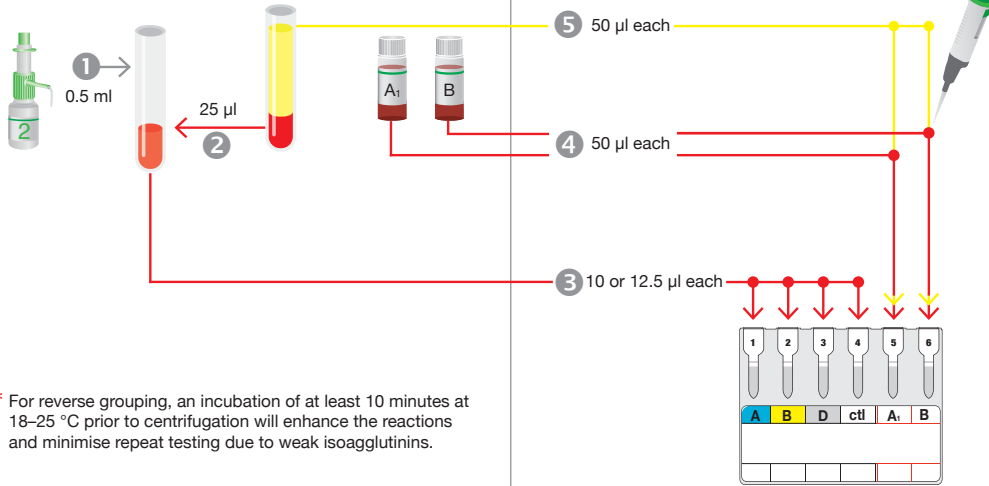
Pipetting (1 test per ID-Card)

Incubation

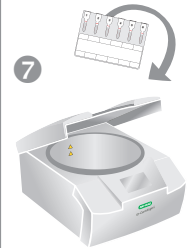
Centrifugation

ID-Diluent 2

Packed cells

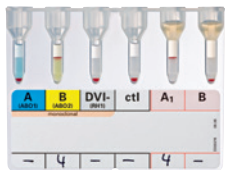


* For reverse grouping, an incubation of at least 10 minutes at 18–25 °C prior to centrifugation will enhance the reactions and minimise repeat testing due to weak isoagglutinins.



8 Read the reaction(s)

Product Pictures



DiaClon ABO/D + Reverse Grouping
(Id-n°: 50092)



DiaClon ABO/D + Reverse Grouping for Donors
(Id-n°: 51090)



DiaClon ABO/D + Reverse Grouping
(Id-n°: 50742)



DiaClon ABO/D (DVI+, DVI-) + Reverse Grouping
(Id-n°: 50981)



ID-DiaCell ABO
(Id-n°: 45092)



ID-Diluent 2
(Id-n°: 05761)
100 ml/500 ml

Ordering Information

Catalog # Description

DiaClon ABO/D + Reverse Grouping

001234 A, B, DVI-, cti/A₁, B (Id-n°: 50092), 4 x 12
001237 A, B, DVI-, cti/A₁, B (Id-n°: 50092), 24 x 12
001236 A, B, DVI-, cti/A₁, B (Id-n°: 50092), 60 x 12
001235 A, B, DVI-, cti/A₁, B (Id-n°: 50092), 112 x 12

DiaClon ABO/D + Reverse Grouping for Donors

001365 A, B, DVI+, cti/A₁, B (Id-n°: 51090), 112 x 12
12010791 A, B, DVI+, cti/A₁, B (Id-n°: 51090), 4 x 12

DiaClon ABO/D + Reverse Grouping

001248 A, B, DVI-, DVI-, A₁, B (Id-n°: 50742), 60 x 12
001249 A, B, DVI-, DVI-, A₁, B (Id-n°: 50742), 112 x 12

DiaClon ABO/D (DVI+, DVI-) + Reverse Grouping

001386 A, B, DVI+, DVI-, A₁, B (Id-n°: 50981), 60 x 12

ID-DiaCell ABO

003624 Set of 2 vials A₁, B (Id-n°: 45092), 2 x 10 ml

ID-Diluent 2

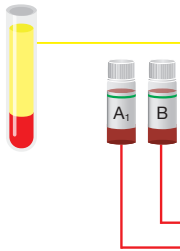
009260 Modified LISS for red cell suspensions (Id-n°: 05761), 2 x 100 ml
009280 Modified LISS for red cell suspensions (Id-n°: 05761), 1 x 500 ml

Reverse Grouping

using ID-DiaCell ABO (A₁-B)

Preparing the Sample Suspension

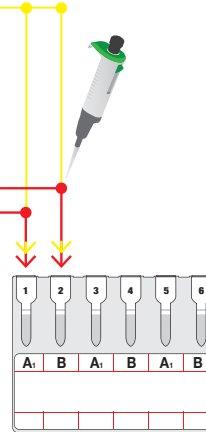
Packed cells



2 50 µl each

1 50 µl each

Pipetting (3 tests per ID-Card)

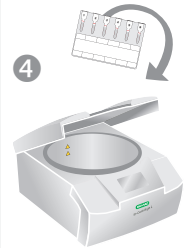


Incubation

3 *



Centrifugation

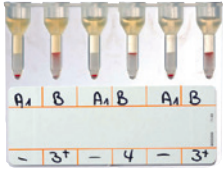


5

Read the reaction(s)

* For reverse grouping, an incubation of at least 10 minutes at 18–25 °C prior to centrifugation will enhance the reactions and minimise repeat testing due to weak isoagglutinins.

Product Pictures



NaCl, Enzyme Test and Cold Agglutinins
(Id-n°: 50520)



ID-DiaCell ABO
(Id-n°: 45092)

Ordering Information

Catalog # Description

NaCl, Enzyme Test and Cold Agglutinins

005014	A ₁ , A ₂ , B/A ₁ , A ₂ , B or A ₁ , B/A ₁ , B/A ₁ , B or IP, IIP, IIIP or IP, IIP, AC (Id-n°: 50520), 4 x 12
005017	A ₁ , A ₂ , B/A ₁ , A ₂ , B or A ₁ , B/A ₁ , B/A ₁ , B or IP, IIP, IIIP or IP, IIP, AC (Id-n°: 50520), 24 x 12
005016	A ₁ , A ₂ , B/A ₁ , A ₂ , B or A ₁ , B/A ₁ , B/A ₁ , B or IP, IIP, IIIP or IP, IIP, AC (Id-n°: 50520), 60 x 12
005015	A ₁ , A ₂ , B/A ₁ , A ₂ , B or A ₁ , B/A ₁ , B/A ₁ , B or IP, IIP, IIIP or IP, IIP, AC (Id-n°: 50520), 112 x 12

ID-DiaCell ABO

003624 Set of 2 vials A₁, B (Id-n°: 45092), 2 x 10 ml

Reverse Grouping

using ID-DiaCell ABO (A₁-A₂-B/A₁-B-O)

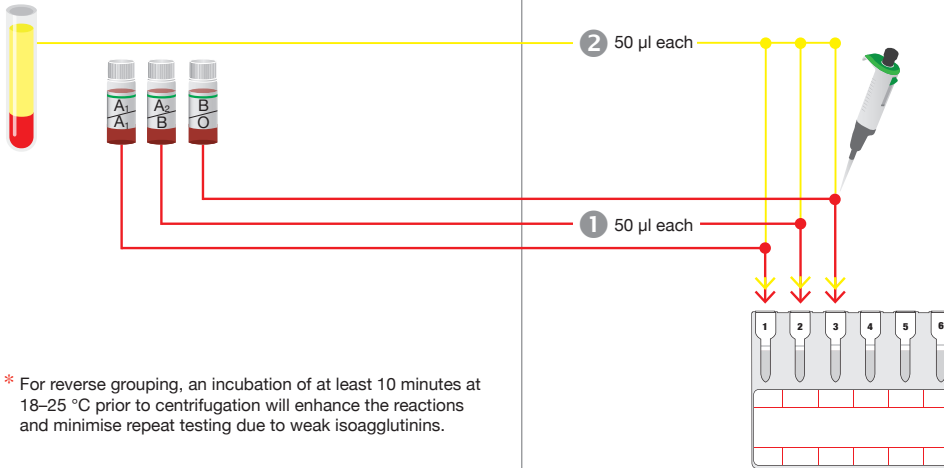
Preparing the Sample Suspension

Pipetting (2 tests per ID-Card)

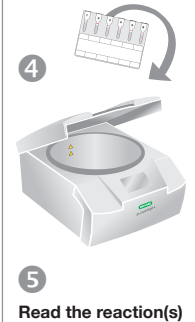
Incubation

Centrifugation

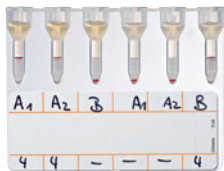
Packed cells



* For reverse grouping, an incubation of at least 10 minutes at 18–25 °C prior to centrifugation will enhance the reactions and minimise repeat testing due to weak isoagglutinins.



Product Pictures



NaCl, Enzyme Test and Cold Agglutinins
(Id-n°: 50520)



ID-DiaCell ABO
(Id-n°: 45082)



ID-DiaCell ABO
(Id-n°: 45352)

Ordering Information

Catalog # Description

NaCl, Enzyme Test and Cold Agglutinins

005014	A ₁ , A ₂ , B/A ₁ , A ₂ , B or A ₁ , B/A ₁ , B/A ₁ , B or IP, IIP, IIIP or IP, IIP, AC (Id-n°: 50520), 4 x 12
005017	A ₁ , A ₂ , B/A ₁ , A ₂ , B or A ₁ , B/A ₁ , B/A ₁ , B or IP, IIP, IIIP or IP, IIP, AC (Id-n°: 50520), 24 x 12
005016	A ₁ , A ₂ , B/A ₁ , A ₂ , B or A ₁ , B/A ₁ , B/A ₁ , B or IP, IIP, IIIP or IP, IIP, AC (Id-n°: 50520), 60 x 12
005015	A ₁ , A ₂ , B/A ₁ , A ₂ , B or A ₁ , B/A ₁ , B/A ₁ , B or IP, IIP, IIIP or IP, IIP, AC (Id-n°: 50520), 112 x 12

ID-DiaCell ABO

003617	Set of 3 vials A ₁ , A ₂ , B (Id-n°: 45082), 3 x 10 ml
003615	Set of 3 vials A ₁ , B, O (Id-n°: 45352), 3 x 10 ml

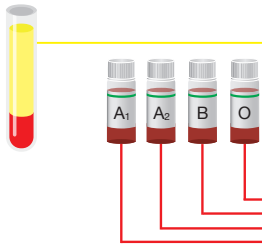


Reverse Grouping

using ID-DiaCell ABO (A₁-A₂-B-O)

Preparing the Sample Suspension

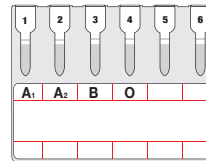
Packed cells



2 50 µl each

1 50 µl each

Pipetting



Incubation



Centrifugation



* For reverse grouping, an incubation of at least 10 minutes at 18–25 °C prior to centrifugation will enhance the reactions and minimise repeat testing due to weak isoagglutinins.

Product Pictures



NaCl, Enzyme and Cold Agglutinins
(Id-n°: 50520)



ID-DiaCell ABO
(Id-n°: 45022)

Ordering Information

Catalog # Description

NaCl, Enzyme Test and Cold Agglutinins

005014	A ₁ , A ₂ , B/A ₁ , A ₂ , B or A ₁ , B/A ₁ , B/A ₁ , B or IP, IIP, IIIP or IP, IIP, AC (Id-n°: 50520), 4 x 12
005017	A ₁ , A ₂ , B/A ₁ , A ₂ , B or A ₁ , B/A ₁ , B/A ₁ , B or IP, IIP, IIIP or IP, IIP, AC (Id-n°: 50520), 24 x 12
005016	A ₁ , A ₂ , B/A ₁ , A ₂ , B or A ₁ , B/A ₁ , B/A ₁ , B or IP, IIP, IIIP or IP, IIP, AC (Id-n°: 50520), 60 x 12
005015	A ₁ , A ₂ , B/A ₁ , A ₂ , B or A ₁ , B/A ₁ , B/A ₁ , B or IP, IIP, IIIP or IP, IIP, AC (Id-n°: 50520), 112 x 12

ID-DiaCell ABO

003619	Set of 4 vials A ₁ , A ₂ , B, O (Id-n°: 45022), 4 x 10 ml
--------	---



Phenotyping Rh/K

2/01 and 2/02 Phenotyping Rh/K

Human Antibodies

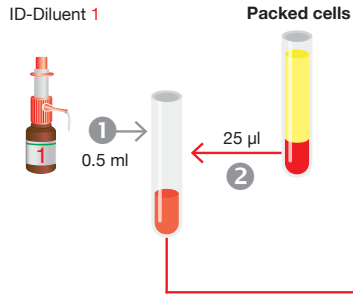
2/03 and 2/04 Phenotyping Rh/K

Monoclonal Antibodies

Phenotyping Rh/K

Human Antibodies

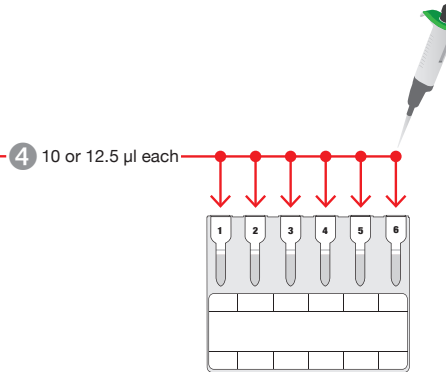
Preparing the Sample Suspension



Incubation



Pipetting (1 test per ID-Card)



Centrifugation



Product Pictures



RhD + Phenotype
(Id-n°: 50130)



ID-Diluent 1
(Id-n°: 05751)
100 ml/500 ml

Ordering Information

Catalog # Description

RhD + Phenotype

002024	C, c, D, E, e, ctl (Id-n°: 50130) human, 4 x 12
002027	C, c, D, E, e, ctl (Id-n°: 50130) human, 24 x 12
002026	C, c, D, E, e, ctl (Id-n°: 50130) human, 60 x 12
002025	C, c, D, E, e, ctl (Id-n°: 50130) human, 112 x 12

ID-Diluent 1

009160	Modified Bromelin solution for red cell suspensions and enzyme tests (Id-n°: 05751), 2 x 100 ml
009180	Modified Bromelin solution for red cell suspensions and enzyme tests (Id-n°: 05751), 1 x 500 ml

Visit www.bio-rad.com/immunohematology for more information ■ *This Quick Guide does not replace the corresponding box-insert!*

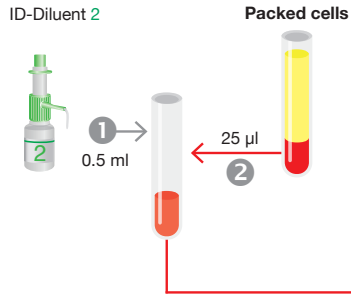
© Bio-Rad Laboratories, Inc.



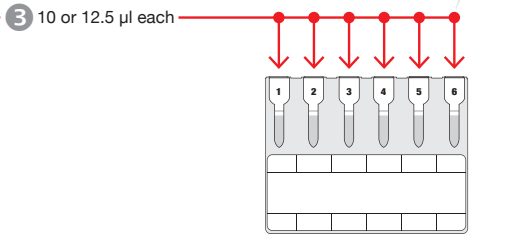
Phenotyping Rh/K

Monoclonal Antibodies

Preparing the Sample Suspension



Pipetting (1 test per ID-Card)



Centrifugation



Product Pictures



DiaClon Rh-Subgroups + K
(Id-n°: 50110)



DiaClon Rh + K Pheno II
(Id-n°: 50710)



DiaClon Rh-Subgroups + C^w + K
(Id-n°: 52000)



Control Card A
(Id-n°: 52020)



ID-Diluent 2
(Id-n°: 05761)
100 ml/500 ml

The ID-Card Control Card A is designed to validate the reactions obtained with the ID-Cards DiaClon Anti-C^w and DiaClon Rh-Subgroups + C^w + K.

Ordering Information

Catalog # Description

DiaClon Rh-Subgroups + K

002124	C, c, E, e, K, ctl (Id-n°: 50110), 4 x 12
002127	C, c, E, e, K, ctl (Id-n°: 50110), 24 x 12
002126	C, c, E, e, K, ctl (Id-n°: 50110), 60 x 12
002125	C, c, E, e, K, ctl (Id-n°: 50110), 112 x 12

DiaClon Rh-Subgroups + C^w + K

002134	C, C^w, c, E, e, K (Id-n°: 52000), 4 x 12
002137	C, C^w, c, E, e, K (Id-n°: 52000), 24 x 12
002136	C, C^w, c, E, e, K (Id-n°: 52000), 60 x 12
002135	C, C^w, c, E, e, K (Id-n°: 52000), 112 x 12

ID-Diluent 2

009260	Modified LISS for red cell suspensions (Id-n°: 05761), 2 x 100 ml
009280	Modified LISS for red cell suspensions (Id-n°: 05761), 1 x 500 ml

DiaClon Rh + K Pheno II

002224	C, c, E, e, K, ctl (Id-n°: 50710), 4 x 12
002227	C, c, E, e, K, ctl (Id-n°: 50710), 24 x 12
002226	C, c, E, e, K, ctl (Id-n°: 50710), 60 x 12
002225	C, c, E, e, K, ctl (Id-n°: 50710), 112 x 12

Control Card A

001711	6 x ctl (Id-n°: 52020), 1 x 12
001714	6 x ctl (Id-n°: 52020), 4 x 12

Visit www.bio-rad.com/immunohematology for more information ■ *This Quick Guide does not replace the corresponding box-insert!*

© Bio-Rad Laboratories, Inc.

Typing of Partial RhD

3/01 and 3/02 Verification of Weak D by IAT

ID-DiaClon Anti-D

3/03 and 3/04 Typing of Partial RhD

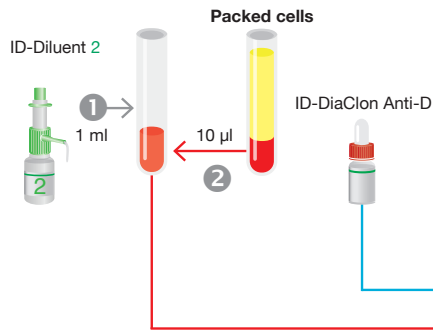
ID-Partial RhD Typing Set



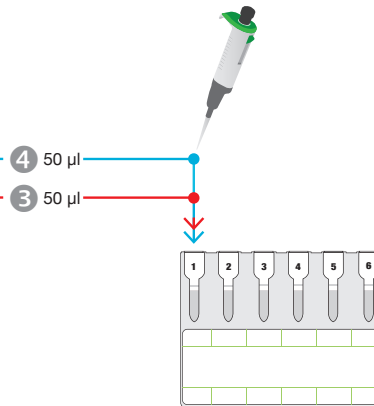
Verification of Weak D by IAT

using ID-DiaClon Anti-D

Preparing the Sample Suspension



Pipetting (6 tests per ID-Card)



Incubation



Centrifugation



Product Pictures



LISS/Coombs
(Id-n°: 50531)



Coombs Anti-IgG
(Id-n°: 50540)



ID-DiaClon Anti-D
(Id-n°: 09410)



ID-Diluent 2
(Id-n°: 05761)
100 ml/500 ml

Ordering Information

Catalog # Description

LISS/Coombs

004014	6 x AHG (Anti-IgG + C3d) tests (Id-n°: 50531) rabbit, 4 x 12
004017	6 x AHG (Anti-IgG + C3d) tests (Id-n°: 50531) rabbit, 24 x 12
004016	6 x AHG (Anti-IgG + C3d) tests (Id-n°: 50531) rabbit, 60 x 12
004015	6 x AHG (Anti-IgG + C3d) tests (Id-n°: 50531) rabbit, 112 x 12

Coombs Anti-IgG

004024	6 x AHG (Anti-IgG) (Id-n°: 50540) rabbit, 4 x 12
004027	6 x AHG (Anti-IgG) (Id-n°: 50540) rabbit, 24 x 12
004026	6 x AHG (Anti-IgG) (Id-n°: 50540) rabbit, 60 x 12
004025	6 x AHG (Anti-IgG) (Id-n°: 50540) rabbit, 112 x 12

ID-DiaClon Anti-D

007531	(Id-n°: 09410) ESD1, 1 x 5 ml
--------	-------------------------------

ID-Diluent 2

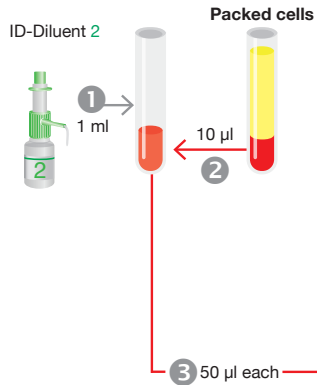
009260	Modified LISS for red cell suspensions (Id-n°: 05761), 2 x 100 ml
009280	Modified LISS for red cell suspensions (Id-n°: 05761), 1 x 500 ml



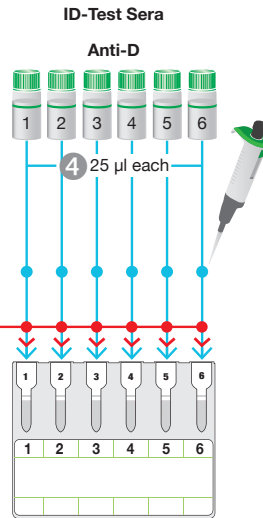
Typing of Partial RhD

using ID-Partial RhD Typing Set

Preparing the Sample Suspension



Pipetting



Incubation



Centrifugation





ID-Partial RhD Typing Set
(Id-n°: 46170)



ID-Diluent 2
(Id-n°: 05761)
100 ml/500 ml

Ordering Information

Catalog # Description

ID-Partial RhD Typing Set

001451 **Test Kit ID-Partial RhD Typing Set** (Id-n°: 46170)
ID-Cards, 1 x 12
ID-Anti-D 1-6, 6 x 0.4 ml

ID-Diluent 2

009260 **Modified LISS for red cell suspensions** (Id-n°: 05761), 2 x 100 ml
009280 **Modified LISS for red cell suspensions** (Id-n°: 05761), 1 x 500 ml

Antibody Screening

4/01 and 4/02	Antibody Screening	ID-DiaCell I-II
4/03 and 4/04	Antibody Screening	ID-DiaCell I-II-III
4/05 and 4/06	Antibody Screening	ID-DiaCell I-II-III Asia (Mi ^{a+})
4/07 and 4/08	Antibody Screening	ID-DiaCell I-II and ID-Di ^a (Diego) Positive
4/09 and 4/10	Antibody Screening	ID-DiaCell IP-IIP-III ^P
4/11 and 4/12	Antibody Screening	ID-DiaCell I-II-III and ID-DiaCell IP-IIP-III ^P
4/13 and 4/14	Antibody Screening	ID-DiaScreen
4/15 and 4/16	Antibody Screening	ID-DiaCell Pool
4/17 and 4/18	Antibody Screening	ID-DiaScreen Prophylax
4/19 and 4/20	Cold Antibody Screening and Cold Agglutinins	ID-DiaCell I-II-III and autocontrol



Antibody Screening (IAT)

using ID-DiaCell I-II

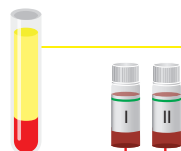
Preparing the Sample Suspension

Pipetting (3 tests per ID-Card)

Incubation

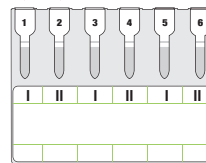
Centrifugation

Packed cells



2 25 μ l each

1 50 μ l each



3



37 °C

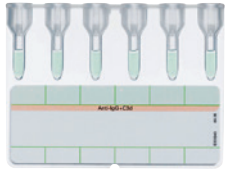
4



5

Read the reaction(s)

Product Pictures



LISS/Coombs
(Id-n°: 50531)



Coombs Anti-IgG
(Id-n°: 50540)



ID-DiaCell I-II
(Id-n°: 45151)

Ordering Information

Catalog # Description

LISS/Coombs

- 004014 6 x AHG (Anti-IgG + C3d) tests (Id-n°: 50531) rabbit, 4 x 12
- 004017 6 x AHG (Anti-IgG + C3d) tests (Id-n°: 50531) rabbit, 24 x 12
- 004016 6 x AHG (Anti-IgG + C3d) tests (Id-n°: 50531) rabbit, 60 x 12
- 004015 6 x AHG (Anti-IgG + C3d) tests (Id-n°: 50531) rabbit, 112 x 12

Coombs Anti-IgG

- 004024 6 x AHG (Anti-IgG) tests (Id-n°: 50540) rabbit, 4 x 12
- 004027 6 x AHG (Anti-IgG) tests (Id-n°: 50540) rabbit, 24 x 12
- 004026 6 x AHG (Anti-IgG) tests (Id-n°: 50540) rabbit, 60 x 12
- 004025 6 x AHG (Anti-IgG) tests (Id-n°: 50540) rabbit, 112 x 12

ID-DiaCell I-II

- 003613 Set of 2 vials for IAT and NaCl test R₁R₁, R₂R₂ (Id-n°: 45151), 2 x 10 ml

Visit www.bio-rad.com/immunohematology for more information ■ *This Quick Guide does not replace the corresponding box-insert!*

© Bio-Rad Laboratories, Inc.

Antibody Screening

using ID-DiaCell I-II-III

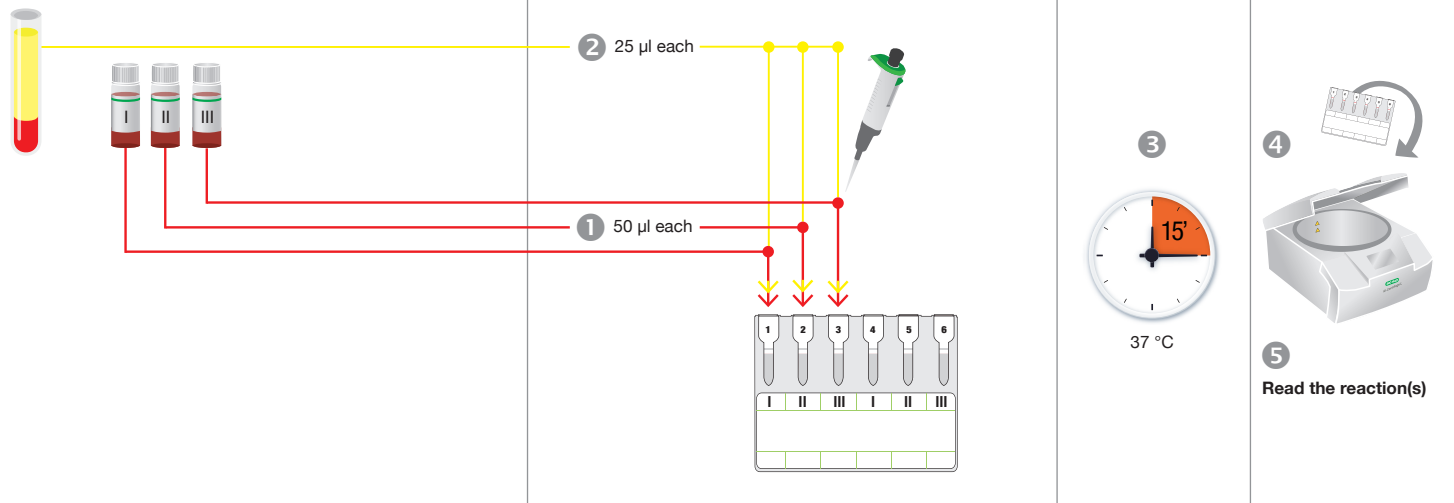
Preparing the Sample Suspension

Pipetting (2 tests per ID-Card)

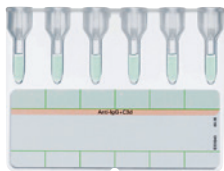
Incubation

Centrifugation

Packed cells



Product Pictures



LISS/Coombs
(Id-n°: 50531)



Coombs Anti-IgG
(Id-n°: 50540)



ID-DiaCell I-II-III
(Id-n°: 45184)

Ordering Information

Catalog # Description

LISS/Coombs

004014 **6 x AHG (Anti-IgG + C3d) tests** (Id-n°: 50531) rabbit, 4 x 12
004017 **6 x AHG (Anti-IgG + C3d) tests** (Id-n°: 50531) rabbit, 24 x 12
004016 **6 x AHG (Anti-IgG + C3d) tests** (Id-n°: 50531) rabbit, 60 x 12
004015 **6 x AHG (Anti-IgG + C3d) tests** (Id-n°: 50531) rabbit, 112 x 12

Coombs Anti-IgG

004024 **6 x AHG (Anti-IgG) tests** (Id-n°: 50540) rabbit, 4 x 12
004027 **6 x AHG (Anti-IgG) tests** (Id-n°: 50540) rabbit, 24 x 12
004026 **6 x AHG (Anti-IgG) tests** (Id-n°: 50540) rabbit, 60 x 12
004025 **6 x AHG (Anti-IgG) tests** (Id-n°: 50540) rabbit, 112 x 12

ID-DiaCell I-II-III

004310 **Set of 3 vials for IAT and NaCl test R₁R₁, R₂R₂, rr** (Id-n°: 45184), 3 x 10 ml



Antibody Screening

using ID-DiaCell I-II-III Asia (Mi^{a+})

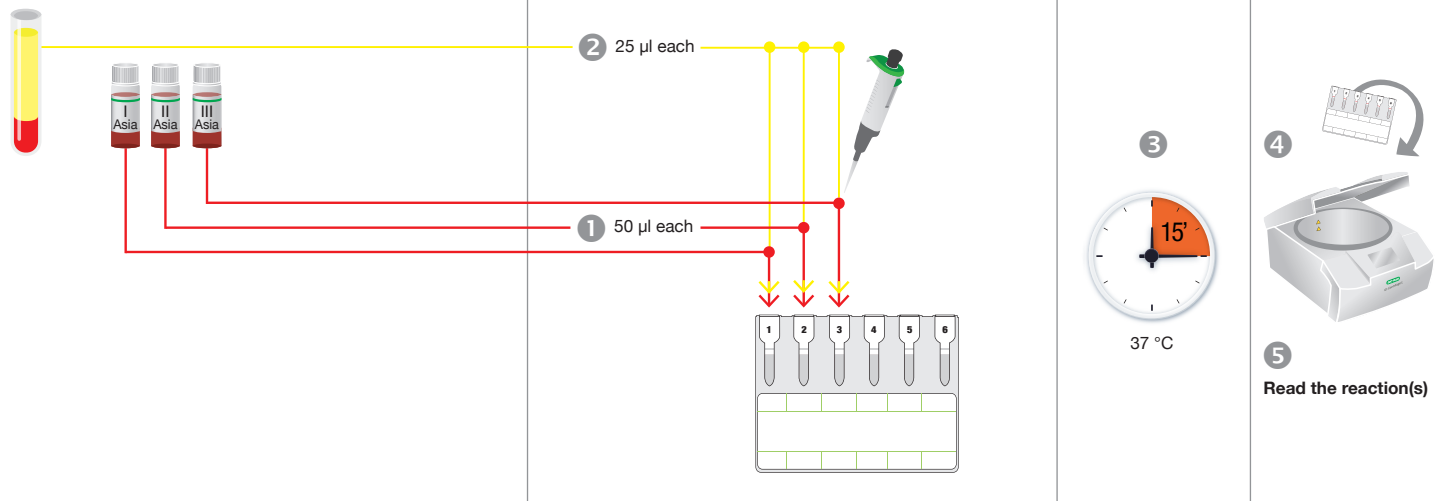
Preparing the Sample Suspension

Pipetting (2 tests per ID-Card)

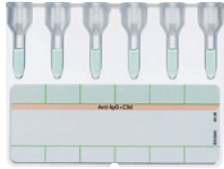
Incubation

Centrifugation

Packed cells



Product Pictures



LISS/Coombs
(Id-n°: 50531)



Coombs Anti-IgG
(Id-n°: 50540)



ID-DiaCell I-II-III Asia
(Mi^{a+})
(Id-n°: 45330)

Ordering Information

Catalog # Description

LISS/Coombs

- 004014 **6 x AHG (Anti-IgG + C3d) tests** (Id-n°: 50531) rabbit, 4 x 12
- 004017 **6 x AHG (Anti-IgG + C3d) tests** (Id-n°: 50531) rabbit, 24 x 12
- 004016 **6 x AHG (Anti-IgG + C3d) tests** (Id-n°: 50531) rabbit, 60 x 12
- 004015 **6 x AHG (Anti-IgG + C3d) tests** (Id-n°: 50531) rabbit, 112 x 12

Coombs Anti-IgG

- 004024 **6 x AHG (Anti-IgG) tests** (Id-n°: 50540) rabbit, 4 x 12
- 004027 **6 x AHG (Anti-IgG) tests** (Id-n°: 50540) rabbit, 24 x 12
- 004026 **6 x AHG (Anti-IgG) tests** (Id-n°: 50540) rabbit, 60 x 12
- 004025 **6 x AHG (Anti-IgG) tests** (Id-n°: 50540) rabbit, 112 x 12

ID-DiaCell I-II-III Asia (Mi^{a+})

- 003614 **Set of 3 vials for IAT and NaCl test R₁R₁, R₂R₂, Mi^{a+}** (Id-n°: 45330), 3 x 10 ml



Antibody Screening

using ID-DiaCell I-II and ID-Di^a (Diego) Positive

Preparing the Sample Suspension

Pipetting (2 tests per ID-Card)

Incubation

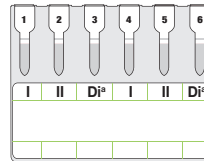
Centrifugation

Packed cells



2 25 µl each

1 50 µl each



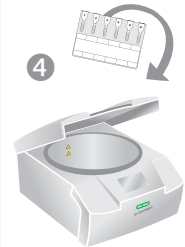
NB: ID-Di^a (Diego) Positive can be combined with other screening kits (e.g. ID-DiaCell I-II-III).

3



37 °C

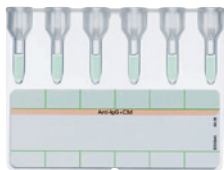
4



5

Read the reaction(s)

Product Pictures



LISS/Coombs
(Id-n°: 50531)



Coombs Anti-IgG
(Id-n°: 50540)



ID-DiaCell I-II
(Id-n°: 45151)



ID-Di^a (Diego) Positive
(Id-n°: 05980)

Ordering Information

Catalog # Description

LISS/Coombs

- 004014 **6 x AHG (Anti-IgG + C3d) tests** (Id-n°: 50531) rabbit, 4 x 12
- 004017 **6 x AHG (Anti-IgG + C3d) tests** (Id-n°: 50531) rabbit, 24 x 12
- 004016 **6 x AHG (Anti-IgG + C3d) tests** (Id-n°: 50531) rabbit, 60 x 12
- 004015 **6 x AHG (Anti-IgG + C3d) tests** (Id-n°: 50531) rabbit, 112 x 12

Coombs Anti-IgG

- 004024 **6 x AHG (Anti-IgG) tests** (Id-n°: 50540) rabbit, 4 x 12
- 004027 **6 x AHG (Anti-IgG) tests** (Id-n°: 50540) rabbit, 24 x 12
- 004026 **6 x AHG (Anti-IgG) tests** (Id-n°: 50540) rabbit, 60 x 12
- 004025 **6 x AHG (Anti-IgG) tests** (Id-n°: 50540) rabbit, 112 x 12

ID-DiaCell I-II

- 003613 **Set of 2 vials for IAT and NaCl test R₁R₁, R₂R₂** (Id-n°: 45151), 2 x 10 ml

ID-Di^a (Diego) Positive

- 004134 **Single vial** (Id-n°: 05980), 1 x 10 ml

Visit www.bio-rad.com/immunohematology for more information ■ *This Quick Guide does not replace the corresponding box-insert!*

© Bio-Rad Laboratories, Inc.

Antibody Screening

using ID-DiaCell IP-IIP-IIIP

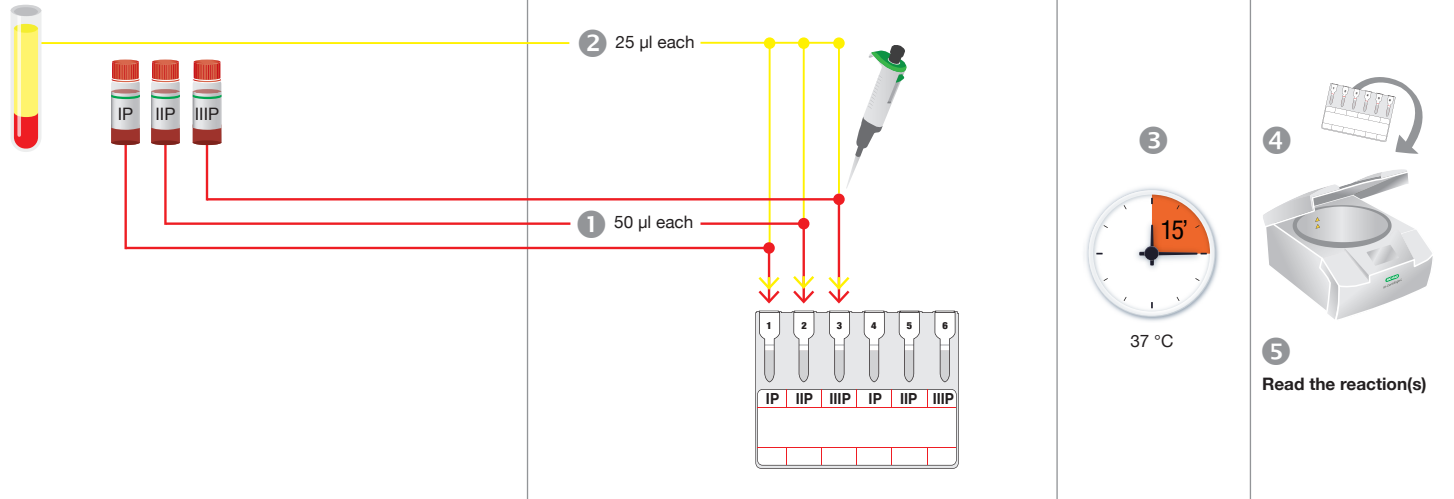
Preparing the Sample Suspension

Pipetting (2 tests per ID-Card)

Incubation

Centrifugation

Packed cells



Product Pictures



NaCl, Enzyme Test and Cold Agglutinins
(Id-n°: 50520)



ID-DiaCell IP-IIP-IIIP
(Id-n°: 45194)

Ordering Information

Catalog # Description

NaCl, Enzyme Test and Cold Agglutinins

005014	A ₁ , A ₂ , B/A ₁ , A ₂ , B or A ₁ , B/A ₁ , B/A ₁ , B or IP, IIP, IIIP or IP, IIP, AC (Id-n°: 50520), 4 x 12
005017	A ₁ , A ₂ , B/A ₁ , A ₂ , B or A ₁ , B/A ₁ , B/A ₁ , B or IP, IIP, IIIP or IP, IIP, AC (Id-n°: 50520), 24 x 12
005016	A ₁ , A ₂ , B/A ₁ , A ₂ , B or A ₁ , B/A ₁ , B/A ₁ , B or IP, IIP, IIIP or IP, IIP, AC (Id-n°: 50520), 60 x 12
005015	A ₁ , A ₂ , B/A ₁ , A ₂ , B or A ₁ , B/A ₁ , B/A ₁ , B or IP, IIP, IIIP or IP, IIP, AC (Id-n°: 50520), 112 x 12

ID-DiaCell IP-IIP-IIIP

005310	Set of 3 vials for enzyme test R ₁ R ₂ , R ₂ R ₂ , rr papainized (Id-n°: 45194), 3 x 10 ml
--------	---

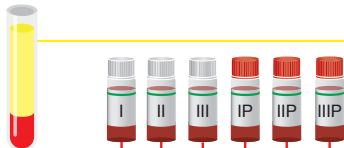


Antibody Screening

using ID-DiaCell I-II-III and ID-DiaCell IP-IIP-IIIP

Preparing the Sample Suspension

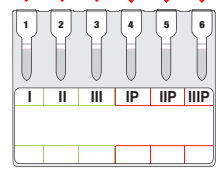
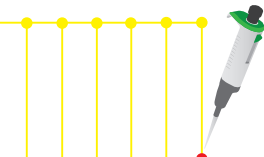
Packed cells



2 25 μ l each

1 50 μ l each

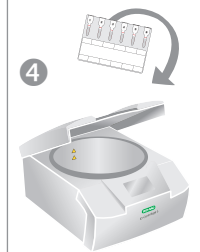
Pipetting



Incubation



Centrifugation



5 Read the reaction(s)

Product Pictures



LISS/Coombs + Enzyme Test
(Id-n°: 50581)



ID-DiaCell I-II-III
(Id-n°: 45184)



ID-DiaCell IP-IIP-IIIP
(Id-n°: 45194)

Ordering Information

Catalog # Description

LISS/Coombs + Enzyme Test

004514	3 x AHG tests/3 x enzyme tests (Id-n°: 50581), 4 x 12
004517	3 x AHG tests/3 x enzyme tests (Id-n°: 50581), 24 x 12
004516	3 x AHG tests/3 x enzyme tests (Id-n°: 50581), 60 x 12
004515	3 x AHG tests/3 x enzyme tests (Id-n°: 50581), 112 x 12

ID-DiaCell I-II-III

004310	Set of 3 vials for IAT and NaCl test R ₁ R ₁ , R ₂ R ₂ , rr (Id-n°: 45184), 3 x 10 ml
--------	---

ID-DiaCell IP-IIP-IIIP

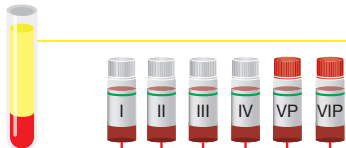
005310	Set of 3 vials for enzyme test R ₁ R ₁ , R ₂ R ₂ , rr papainized (Id-n°: 45194), 3 x 10 ml
--------	--

Antibody Screening

using ID-DiaScreen

Preparing the Sample Suspension

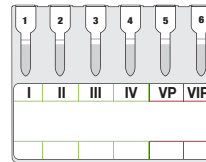
Packed cells



Pipetting

2 25 μ l each

1 50 μ l each



Incubation

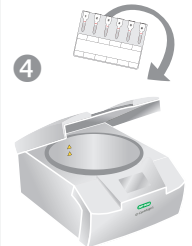
3



37 °C

Centrifugation

4



5

Read the reaction(s)

Product Pictures



DiaScreen
(Id-n°: 50571)



ID-DiaScreen
(Id-n°: 45070)

Ordering Information

Catalog # Description

DiaScreen

004704 4 x AHG tests/2 x enzyme tests (Id-n°: 50571), 4 x 12
 004707 4 x AHG tests/2 x enzyme tests (Id-n°: 50571), 24 x 12
 004706 4 x AHG tests/2 x enzyme tests (Id-n°: 50571), 60 x 12
 004705 4 x AHG tests/2 x enzyme tests (Id-n°: 50571), 112 x 12

ID-DiaScreen

004316 Set of 6 vials for IAT and enzyme test I, II, III, IV, V, VI
 $R_1^+R_1, R_2R_2, rr, Kp^a/R_1^+R_1, R_2R_2$ papainized (Id-n°: 45070), 6 x 10 ml
 004311 Set of 4 vials for IAT, I, II, III, IV $R_1^+R_1, R_2R_2, rr, Kp^a$
 (Id-n°: 45200), 4 x 10 ml
 005311 Set of 2 vials for enzyme test V, VI $R_1^+R_1, R_2R_2$ papainized
 (Id-n°: 45210), 2 x 10 ml



Antibody Screening

using ID-DiaCell Pool

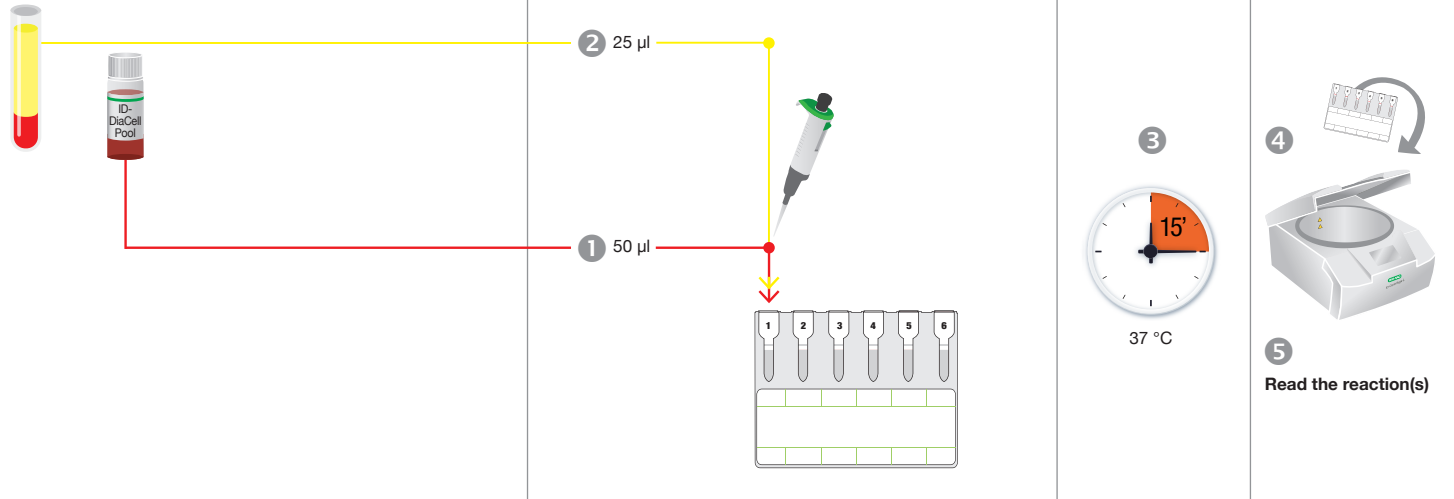
Preparing the Sample Suspension

Pipetting (6 tests per ID-Card)

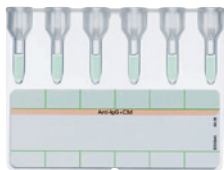
Incubation

Centrifugation

Packed cells



Product Pictures



LISS/Coombs
(Id-n°: 50531)



Coombs Anti-IgG
(Id-n°: 50540)



ID-DiaCell Pool
(Id-n°: 06070)

Ordering Information

Catalog # Description

LISS/Coombs

- 004014 **6 x AHG (Anti-IgG + C3d) tests** (Id-n°: 50531) rabbit, 4 x 12
- 004017 **6 x AHG (Anti-IgG + C3d) tests** (Id-n°: 50531) rabbit, 24 x 12
- 004016 **6 x AHG (Anti-IgG + C3d) tests** (Id-n°: 50531) rabbit, 60 x 12
- 004015 **6 x AHG (Anti-IgG + C3d) tests** (Id-n°: 50531) rabbit, 112 x 12

Coombs Anti-IgG

- 004024 **6 x AHG (Anti-IgG)** (Id-n°: 50540) rabbit, 4 x 12
- 004027 **6 x AHG (Anti-IgG)** (Id-n°: 50540) rabbit, 24 x 12
- 004026 **6 x AHG (Anti-IgG)** (Id-n°: 50540) rabbit, 60 x 12
- 004025 **6 x AHG (Anti-IgG)** (Id-n°: 50540) rabbit, 112 x 12

ID-DiaCell Pool

- 003630 **2 pooled cells for IAT test R₁R₁, R₂R₂** (Id-n°: 50331), 1 x 10 ml
- 003631 **2 pooled cells for IAT test R₁R₁, R₂R₂** (Id-n°: 06070), 3 x 10 ml

Antibody Screening

using ID-DiaScreen Prophylax

Preparing the Sample Suspension

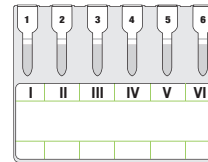
Packed cells



Pipetting

2 25 μ l each

1 50 μ l each



Incubation

3



37 °C

Centrifugation

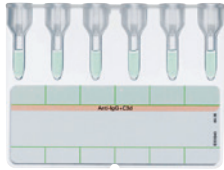
4



5

Read the reaction(s)

Product Pictures



LISS/Coombs
(Id-n°: 50531)



Coombs Anti-IgG
(Id-n°: 50540)



**ID-DiaScreen
Prophylax**
(Id-n°: 45660)

Ordering Information

Catalog # Description

LISS/Coombs

- 004014 6 x AHG (Anti-IgG + C3d) tests (Id-n°: 50531) rabbit, 4 x 12
- 004017 6 x AHG (Anti-IgG + C3d) tests (Id-n°: 50531) rabbit, 24 x 12
- 004016 6 x AHG (Anti-IgG + C3d) tests (Id-n°: 50531) rabbit, 60 x 12
- 004015 6 x AHG (Anti-IgG + C3d) tests (Id-n°: 50531) rabbit, 112 x 12

Coombs Anti-IgG

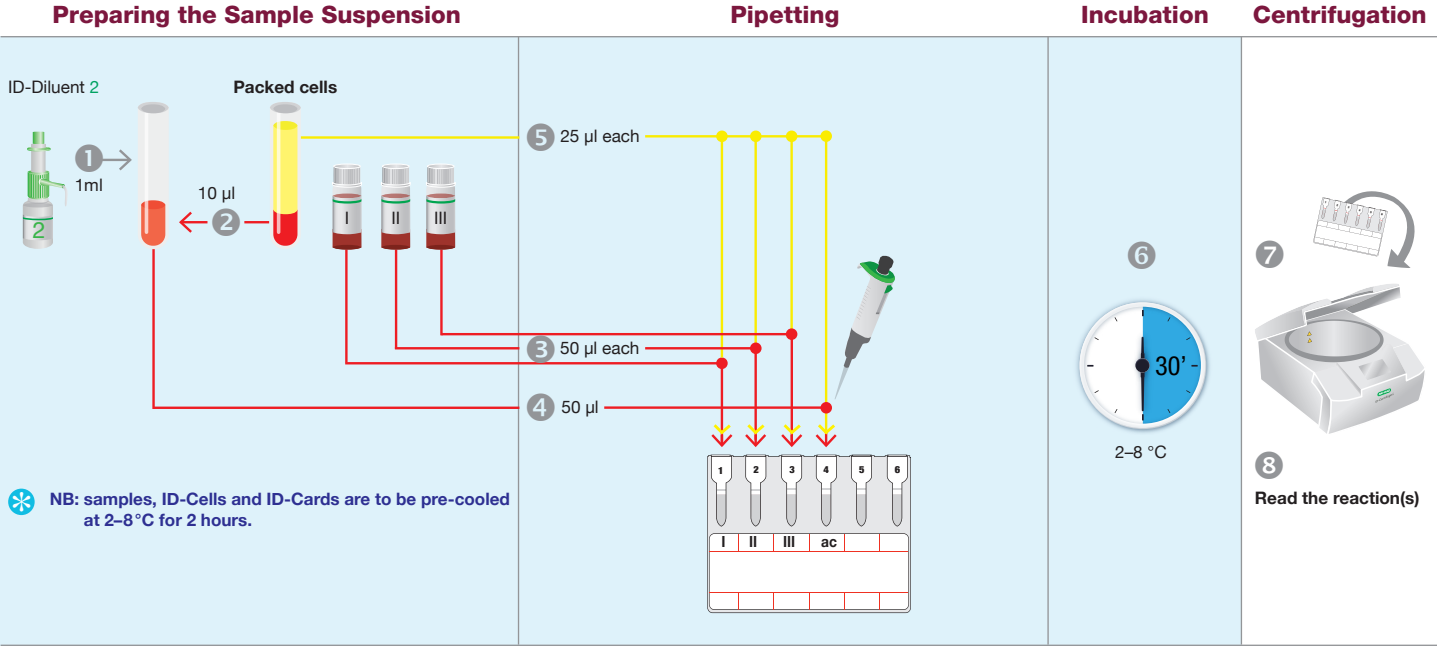
- 004024 6 x AHG (Anti-IgG) tests (Id-n°: 50540) rabbit, 4 x 12
- 004027 6 x AHG (Anti-IgG) tests (Id-n°: 50540) rabbit, 24 x 12
- 004026 6 x AHG (Anti-IgG) tests (Id-n°: 50540) rabbit, 60 x 12
- 004025 6 x AHG (Anti-IgG) tests (Id-n°: 50540) rabbit, 112 x 12

ID-DiaScreen Prophylax

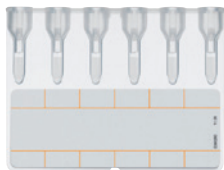
- 004330 Set of 6 vials for IAT R₁R₂, r'r, r'r, rr, rr (Id-n°: 45660), 6 x 5 ml



Cold Antibody Screening and Cold Agglutinins using ID-DiaCell I-II-III and autocontrol



Product Pictures



NaCl, Enzyme Test and Cold Agglutinins
(Id-n°: 50520)



ID-DiaCell I-II-III
(Id-n°: 45184)



ID-Diluent 2
(Id-n°: 05761)
100 ml/500 ml

Ordering Information

Catalog # Description

NaCl, Enzyme Test and Cold Agglutinins

005014	A₁, A₂, B/A₁, A₂, B or A₁, B/A₁, B/A₁, B or IP, IIP, IIIP or IP, IIP, AC (Id-n°: 50520), 4 x 12
005017	A₁, A₂, B/A₁, A₂, B or A₁, B/A₁, B/A₁, B or IP, IIP, IIIP or IP, IIP, AC (Id-n°: 50520), 24 x 12
005016	A₁, A₂, B/A₁, A₂, B or A₁, B/A₁, B/A₁, B or IP, IIP, IIIP or IP, IIP, AC (Id-n°: 50520), 60 x 12
005015	A₁, A₂, B/A₁, A₂, B or A₁, B/A₁, B/A₁, B or IP, IIP, IIIP or IP, IIP, AC (Id-n°: 50520), 112 x 12

ID-DiaCell I-II-III

004310 **Set of 3 vials for IAT and NaCl test R₁R₁, R₂R₂, rr** (Id-n°: 45184), 3 x 10 ml

ID-Diluent 2

009260 **Modified LISS for red cell suspensions** (Id-n°: 05761), 2 x 100 ml
009280 **Modified LISS for red cell suspensions** (Id-n°: 05761), 1 x 500 ml



Antibody Identification

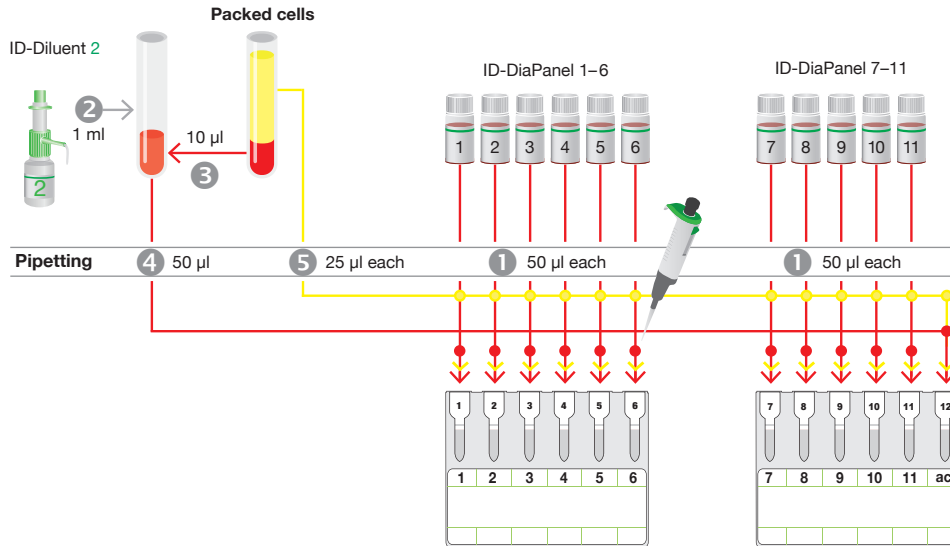
5/01 and 5/02	Antibody Identification	ID-DiaPanel and autocontrol
5/03 and 5/04	Antibody Identification	ID-DiaPanel-P and autocontrol
5/05 and 5/06	Antibody Identification	ID-DiaPanel Plus 6



Antibody Identification

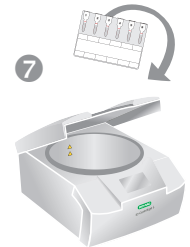
using ID-DiaPanel and autocontrol

Preparing the Sample Suspension



Incubation

Centrifugation



8

Read the reaction(s)

Product Pictures



LISS/Coombs
(Id-n°: 50531)



Coombs Anti-IgG
(Id-n°: 50540)



ID-DiaPanel
(Id-n°: 45161)



ID-Diluent 2
(Id-n°: 05761)
100 ml/500 ml

Ordering Information

Catalog # Description

LISS/Coombs

- 004014 6 x AHG (Anti-IgG + C3d) tests (Id-n°: 50531) rabbit, 4 x 12
- 004017 6 x AHG (Anti-IgG + C3d) tests (Id-n°: 50531) rabbit, 24 x 12
- 004016 6 x AHG (Anti-IgG + C3d) tests (Id-n°: 50531) rabbit, 60 x 12
- 004015 6 x AHG (Anti-IgG + C3d) tests (Id-n°: 50531) rabbit, 112 x 12

Coombs Anti-IgG

- 004024 6 x AHG (Anti-IgG) tests (Id-n°: 50540) rabbit, 4 x 12
- 004027 6 x AHG (Anti-IgG) tests (Id-n°: 50540) rabbit, 24 x 12
- 004026 6 x AHG (Anti-IgG) tests (Id-n°: 50540) rabbit, 60 x 12
- 004025 6 x AHG (Anti-IgG) tests (Id-n°: 50540) rabbit, 112 x 12

ID-DiaPanel

- 004114 Set of 11 vials for IAT and NaCl test (Id-n°: 45161), 11 x 4 ml

ID-Diluent 2

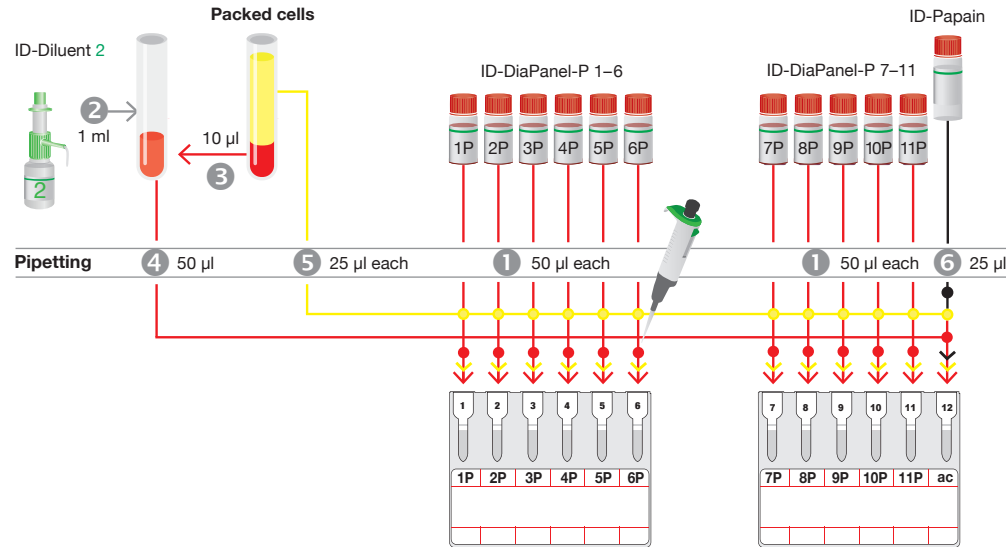
- 009260 Modified LISS for red cell suspensions (Id-n°: 05761), 2 x 100 ml
- 009280 Modified LISS for red cell suspensions (Id-n°: 05761), 1 x 500 ml



Antibody Identification

using ID-DiaPanel-P and autocontrol

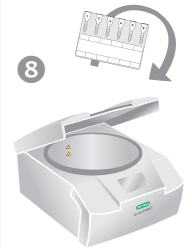
Preparing the Sample Suspension



Incubation



Centrifugation



9 Read the reaction(s)

Product Pictures



NaCl, Enzyme Test and Cold Agglutinins
(Id-n°: 50520)



ID-DiaPanel-P
(Id-n°: 45171)



ID-Papain
(Id-n°: 06311)



ID-Diluent 2
(Id-n°: 05761)
100 ml/500 ml

Ordering Information

Catalog # Description

NaCl, Enzyme Test and Cold Agglutinins

005014 **6 x tests** (Id-n°: 50520), 4 x 12
005017 **6 x tests** (Id-n°: 50520), 24 x 12
005016 **6 x tests** (Id-n°: 50520), 60 x 12
005015 **6 x tests** (Id-n°: 50520), 112 x 12

ID-DiaPanel-P

004214 **Set of 11 vials for enzyme test, papainized** (Id-n°: 45171), 11 x 4 ml

ID-Papain

005510 **Papain solution for papainizing red cells** (Id-n°: 06311), 1 x 10 ml
005511 **Papain solution for papainizing red cells** (Id-n°: 06311), 10 x 10 ml

ID-Diluent 2

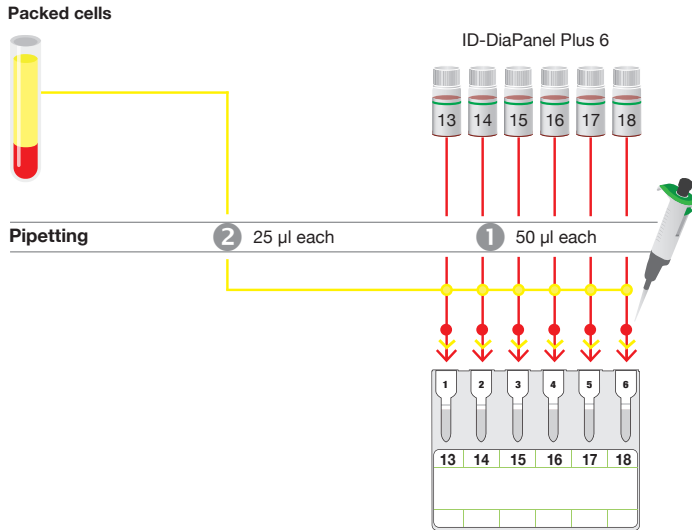
009260 **Modified LISS for red cell suspensions** (Id-n°: 05761), 2 x 100 ml
009280 **Modified LISS for red cell suspensions** (Id-n°: 05761), 1 x 500 ml



Antibody Identification

using ID-DiaPanel Plus 6

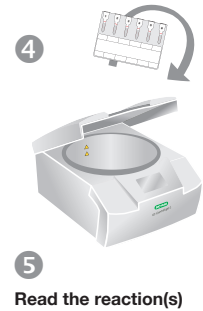
Preparing the Sample Suspension



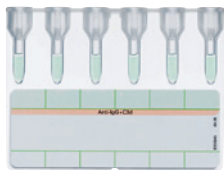
Incubation



Centrifugation



Product Pictures



LISS/Coombs
(Id-n°: 50531)



Coombs Anti-IgG
(Id-n°: 50540)



ID-DiaPanel Plus 6
(Id-n°: 45670)

Ordering Information

Catalog # Description

LISS/Coombs

- 004014 6 x AHG (Anti-IgG + C3d) tests (Id-n°: 50531) rabbit, 4 x 12
- 004017 6 x AHG (Anti-IgG + C3d) tests (Id-n°: 50531) rabbit, 24 x 12
- 004016 6 x AHG (Anti-IgG + C3d) tests (Id-n°: 50531) rabbit, 60 x 12
- 004015 6 x AHG (Anti-IgG + C3d) tests (Id-n°: 50531) rabbit, 112 x 12

Coombs Anti-IgG

- 004024 6 x AHG (Anti-IgG) tests (Id-n°: 50540) rabbit, 4 x 12
- 004027 6 x AHG (Anti-IgG) tests (Id-n°: 50540) rabbit, 24 x 12
- 004026 6 x AHG (Anti-IgG) tests (Id-n°: 50540) rabbit, 60 x 12
- 004025 6 x AHG (Anti-IgG) tests (Id-n°: 50540) rabbit, 112 x 12

ID-DiaPanel Plus 6

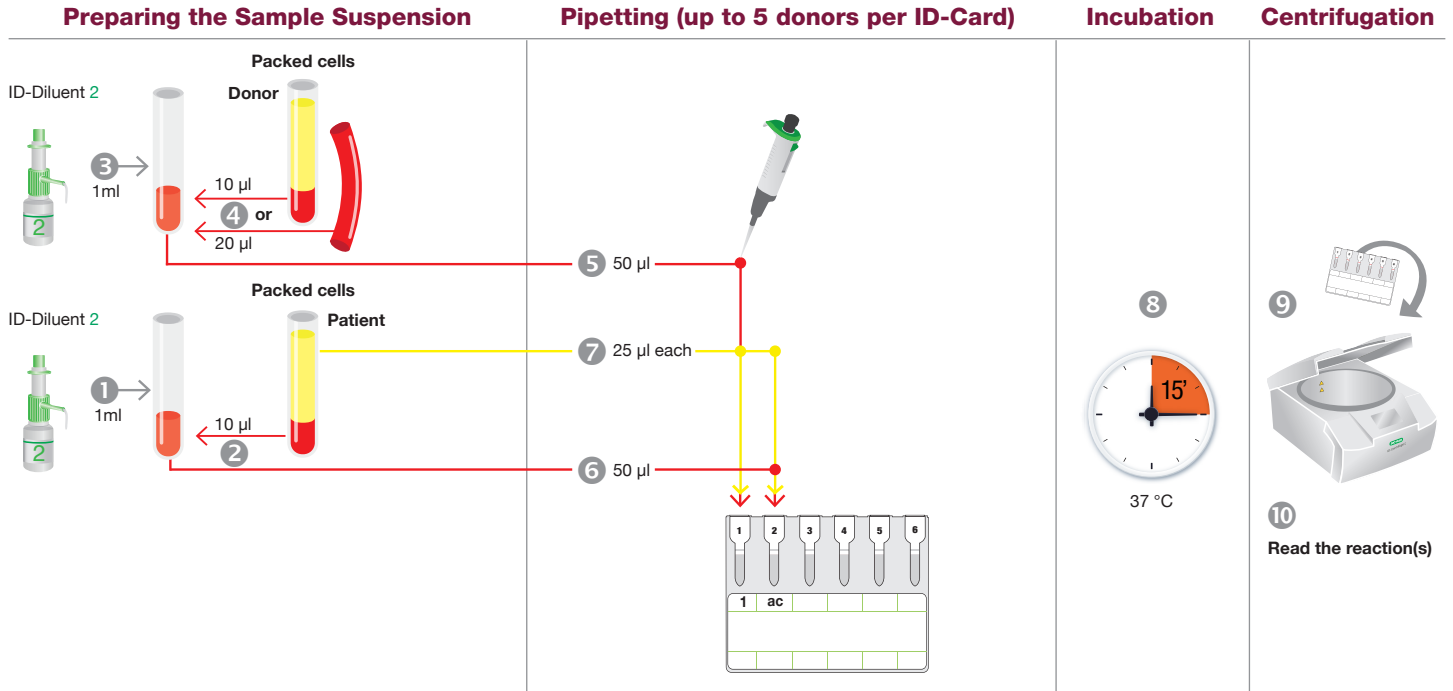
- 004414 Set of 6 vials for IAT and NaCl test (Id-n°: 45670), 6 x 4 ml

Compatibility Tests

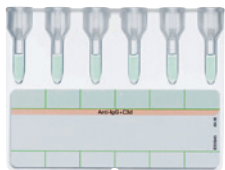
6/01 and 6/02	Compatibility Tests	By IAT with autocontrol
6/03 and 6/04	Compatibility Tests	By enzyme technique with autocontrol
6/05 and 6/06	Compatibility Tests	Monoclonal Antibodies using DiaClon Complete Crossmatch
6/07 and 6/08	Compatibility Tests	Human Antibodies using Complete Crossmatch

Compatibility Tests

By IAT with autocontrol



Product Pictures



LISS/Coombs
(Id-n°: 50531)



Coombs Anti-IgG
(Id-n°: 50540)



ID-Diluent 2
(Id-n°: 05761)
100 ml/500 ml

Ordering Information

Catalog # Description

LISS/Coombs

004014 **6 x AHG (Anti-IgG + C3d) tests** (Id-n°: 50531) rabbit, 4 x 12
004017 **6 x AHG (Anti-IgG + C3d) tests** (Id-n°: 50531) rabbit, 24 x 12
004016 **6 x AHG (Anti-IgG + C3d) tests** (Id-n°: 50531) rabbit, 60 x 12
004015 **6 x AHG (Anti-IgG + C3d) tests** (Id-n°: 50531) rabbit, 112 x 12

Coombs Anti-IgG

004024 **6 x AHG (Anti-IgG) tests** (Id-n°: 50540) rabbit, 4 x 12
004027 **6 x AHG (Anti-IgG) tests** (Id-n°: 50540) rabbit, 24 x 12
004026 **6 x AHG (Anti-IgG) tests** (Id-n°: 50540) rabbit, 60 x 12
004025 **6 x AHG (Anti-IgG) tests** (Id-n°: 50540) rabbit, 112 x 12

ID-Diluent 2

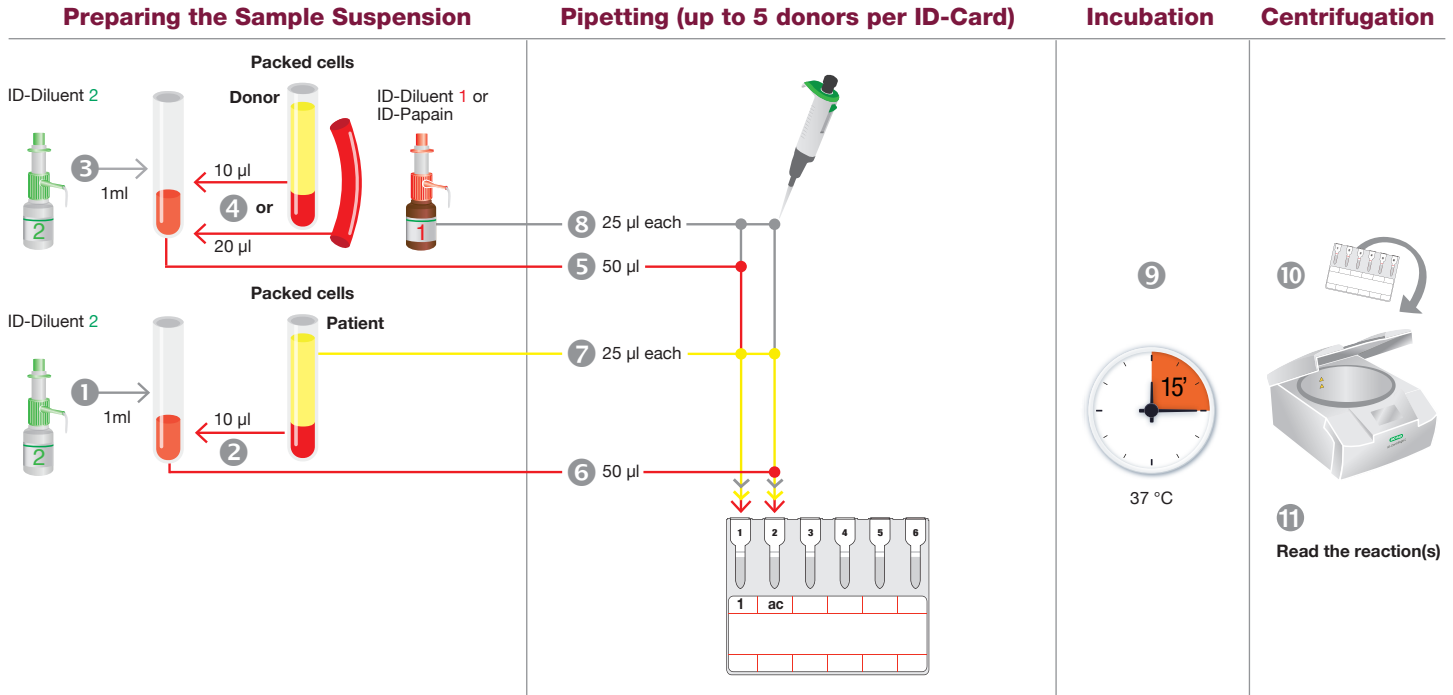
009260 **Modified LISS for red cell suspensions** (Id-n°: 05761), 2 x 100 ml
009280 **Modified LISS for red cell suspensions** (Id-n°: 05761), 1 x 500 ml

Visit www.bio-rad.com/immunohematology for more information ■ *This Quick Guide does not replace the corresponding box-insert!*

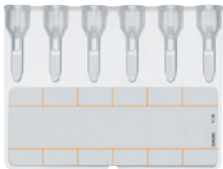
© Bio-Rad Laboratories, Inc.

Compatibility Tests

By enzyme technique with autocontrol



Product Pictures



NaCl, Enzyme Test and Cold Agglutinins
(Id-n°: 50520)



ID-Papain
(Id-n°: 06311)



ID-Diluent 1
(Id-n°: 05751)
100 ml/500 ml



ID-Diluent 2
(Id-n°: 05761)
100 ml/500 ml

Ordering Information

Catalog # Description

NaCl, Enzyme Test and Cold Agglutinins

005014 **6 x tests** (Id-n°: 50520), 4 x 12
005017 **6 x tests** (Id-n°: 50520), 24 x 12
005016 **6 x tests** (Id-n°: 50520), 60 x 12
005015 **6 x tests** (Id-n°: 50520), 112 x 12

ID-Papain

005510 **Papain solution for papainizing red cells** (Id-n°: 06311), 1 x 10 ml
005511 **Papain solution for papainizing red cells** (Id-n°: 06311), 10 x 10 ml

ID-Diluent 1

009160 **Modified Bromelin solution for red cell suspensions and enzyme tests** (Id-n°: 05751), 2 x 100 ml
009180 **Modified Bromelin solution for red cell suspensions and enzyme tests** (Id-n°: 05751), 1 x 500 ml

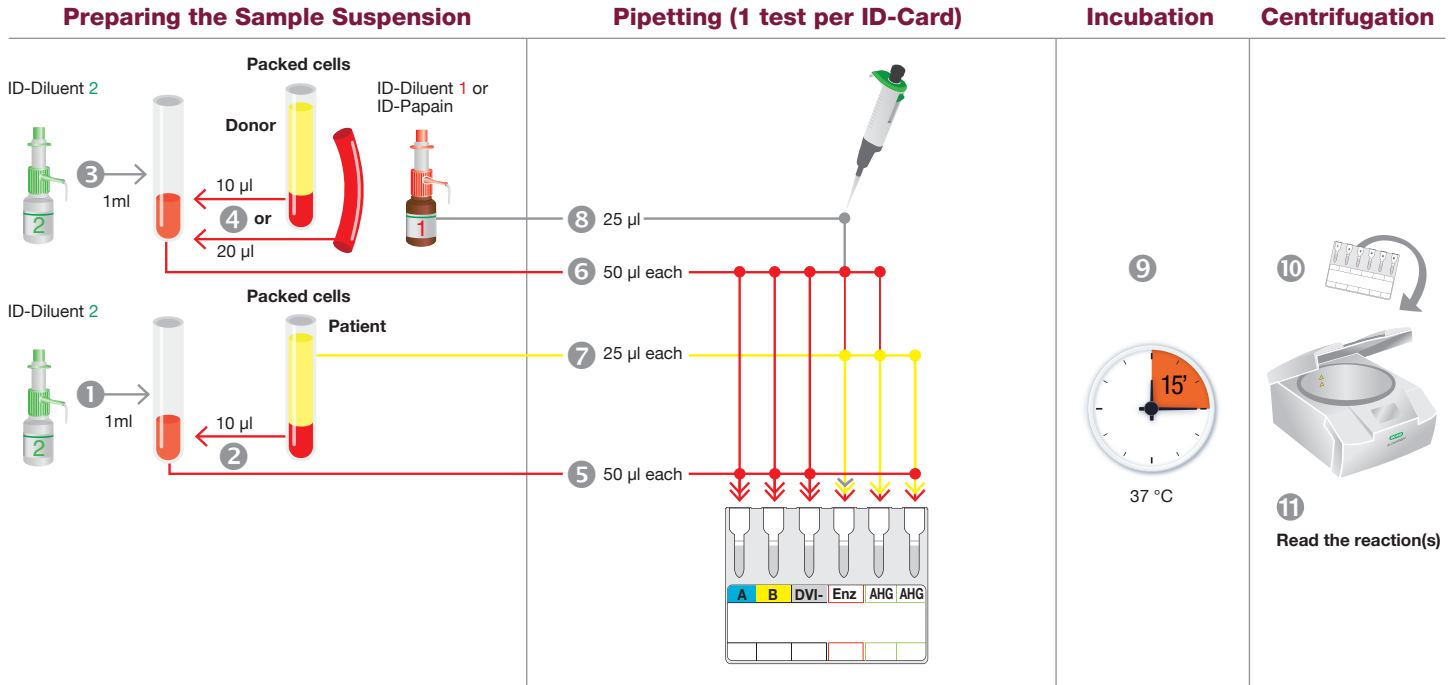
ID-Diluent 2

009260 **Modified LISS for red cell suspensions** (Id-n°: 05761), 2 x 100 ml
009280 **Modified LISS for red cell suspensions** (Id-n°: 05761), 1 x 500 ml

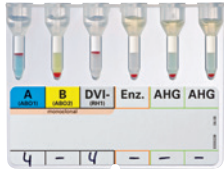


Compatibility Tests

Monoclonal Antibodies using DiaClon Complete Crossmatch with ABO/D Test of both Donor and Patient



Product Pictures



DiaClon Complete Crossmatch
(Id-n°: 50601)



ID-Papain
(Id-n°: 06311)



ID-Diluent 1
(Id-n°: 05751)
100 ml/500 ml



ID-Diluent 2
(Id-n°: 05761)
100 ml/500 ml

Ordering Information

Catalog # Description

DiaClon Complete Crossmatch

004614 A, B, DVI-/Enz./2 x AHG (Id-n°: 50601), 4 x 12
004617 A, B, DVI-/Enz./2 x AHG (Id-n°: 50601), 24 x 12
004616 A, B, DVI-/Enz./2 x AHG (Id-n°: 50601), 60 x 12
004615 A, B, DVI-/Enz./2 x AHG (Id-n°: 50601), 112 x 12

ID-Papain

005510 Papain solution for papainizing red cells (Id-n°: 06311), 1 x 10 ml
005511 Papain solution for papainizing red cells (Id-n°: 06311), 10 x 10 ml

ID-Diluent 1

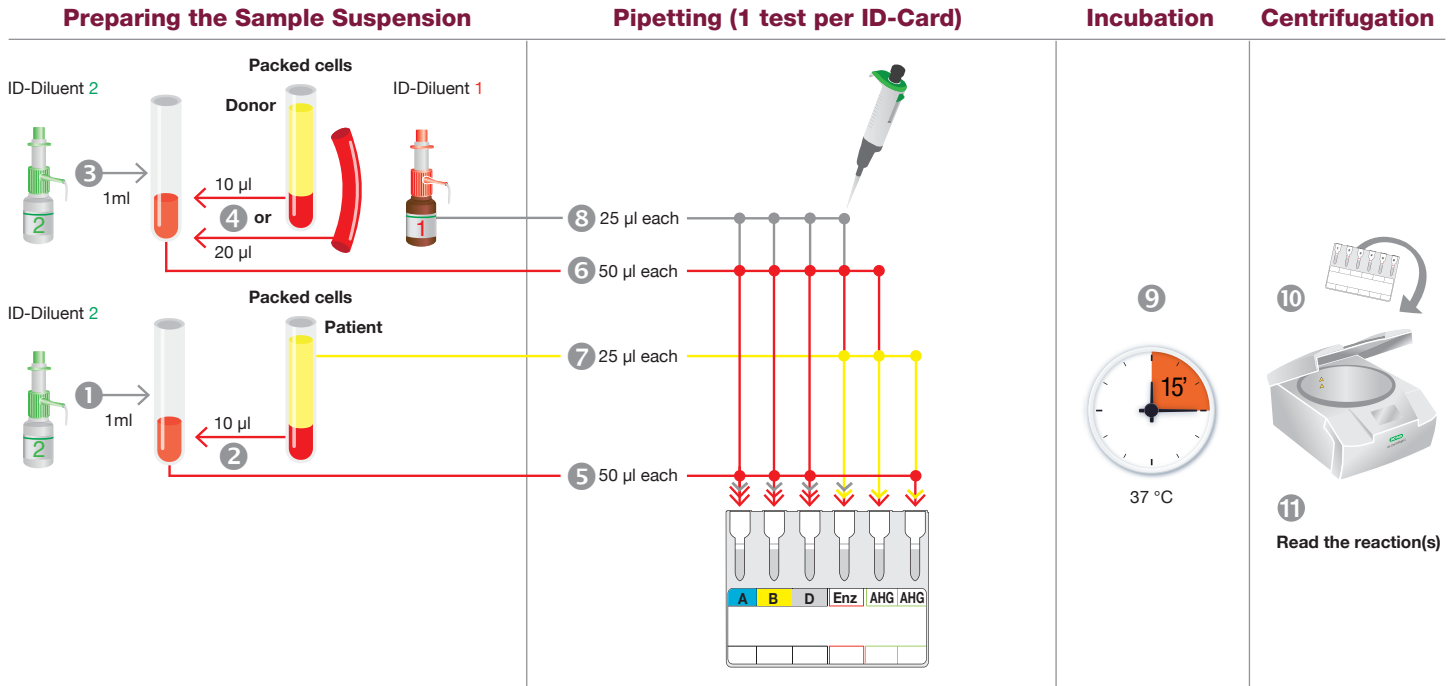
009160 **Modified Bromelin solution for red cell suspensions and enzyme tests**
(Id-n°: 05751), 2 x 100 ml
009180 **Modified Bromelin solution for red cell suspensions and enzyme tests**
(Id-n°: 05751), 1 x 500 ml

ID-Diluent 2

009260 **Modified LISS for red cell suspensions** (Id-n°: 05761), 2 x 100 ml
009280 **Modified LISS for red cell suspensions** (Id-n°: 05761), 1 x 500 ml

Compatibility Tests

Human Antibodies using Complete Crossmatch with ABO/D Test of both Donor and Patient



Product Pictures



Complete Crossmatch
(Id-n°: 50591)



ID-Diluent 1
(Id-n°: 05751)
100 ml/500 ml



ID-Diluent 2
(Id-n°: 05761)
100 ml/500 ml

Ordering Information

Catalog # Description

Complete Crossmatch

004604	A, B, D/Enz./2 x AHG (Id-n°: 50591), 4 x 12
004607	A, B, D/Enz./2 x AHG (Id-n°: 50591), 24 x 12
004606	A, B, D/Enz./2 x AHG (Id-n°: 50591), 60 x 12
004605	A, B, D/Enz./2 x AHG (Id-n°: 50591), 112 x 12

ID-Diluent 1

009160	Modified Bromelin solution for red cell suspensions and enzyme tests (Id-n°: 05751), 2 x 100 ml
009180	Modified Bromelin solution for red cell suspensions and enzyme tests (Id-n°: 05751), 1 x 500 ml

ID-Diluent 2

009260	Modified LISS for red cell suspensions (Id-n°: 05761), 2 x 100 ml
009280	Modified LISS for red cell suspensions (Id-n°: 05761), 1 x 500 ml

Direct Antiglobulin Test (DAT)

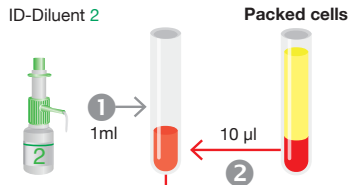
7/01 and 7/02	Direct Antiglobulin Test (DAT)	LISS/Coombs or Coombs Anti-IgG
7/03 and 7/04	Direct Antiglobulin Test (DAT)	DC-Screening I
7/05 and 7/06	Direct Antiglobulin Test (DAT)	DC-Screening II
7/07 and 7/08	Direct Antiglobulin Test (DAT)	DAT IgG-Dilution
7/09 and 7/10	Direct Antiglobulin Test (DAT)	DAT IgG1/IgG3



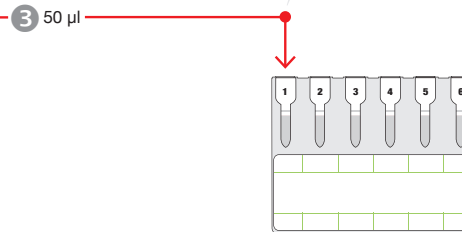
Direct Antiglobulin Test (DAT)

using LISS/Coombs or Coombs Anti-IgG

Preparing the Sample Suspension



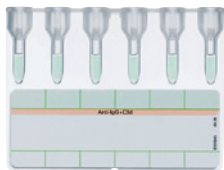
Pipetting (6 tests per ID-Card)



Centrifugation



Product Pictures



LISS/Coombs
(ld-n°: 50531)



Coombs Anti-IgG
(ld-n°: 50540)



ID-Diluent 2
(ld-n°: 05761)
100 ml/500 ml

Ordering Information

Catalog # Description

LISS/Coombs

004014	6 x AHG (Anti-IgG + C3d) (ld-n°: 50531) rabbit, 4 x 12
004017	6 x AHG (Anti-IgG + C3d) (ld-n°: 50531) rabbit, 24 x 12
004016	6 x AHG (Anti-IgG + C3d) (ld-n°: 50531) rabbit, 60 x 12
004015	6 x AHG (Anti-IgG + C3d) (ld-n°: 50531) rabbit, 112 x 12

ID-Diluent 2

009260	Modified LISS for red cell suspensions (ld-n°: 05761), 2 x 100 ml
009280	Modified LISS for red cell suspensions (ld-n°: 05761), 1 x 500 ml

Coombs Anti-IgG

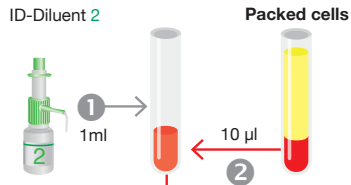
004024	6 x AHG (Anti-IgG) (ld-n°: 50540) rabbit, 4 x 12
004027	6 x AHG (Anti-IgG) (ld-n°: 50540) rabbit, 24 x 12
004026	6 x AHG (Anti-IgG) (ld-n°: 50540) rabbit, 60 x 12
004025	6 x AHG (Anti-IgG) (ld-n°: 50540) rabbit, 112 x 12



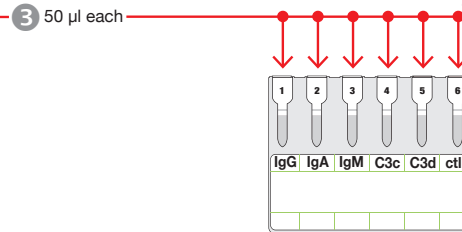
Direct Antiglobulin Test (DAT)

using DC-Screening I

Preparing the Sample Suspension



Pipetting (1 test per ID-Card)



Centrifugation



Product Pictures



DC-Screening I
(Id-n°: 50830)



ID-Diluent 2
(Id-n°: 05761)
100 ml/500 ml

Ordering Information

Catalog # Description

DC-Screening I

004851 **IgG, IgA, IgM, C3c, C3d, ctl** (Id-n°: 50830), 1 x 12
004857 **IgG, IgA, IgM, C3c, C3d, ctl** (Id-n°: 50830), 24 x 12
004856 **IgG, IgA, IgM, C3c, C3d, ctl** (Id-n°: 50830), 60 x 12

ID-Diluent 2

009260 **Modified LISS for red cell suspensions** (Id-n°: 05761), 2 x 100 ml
009280 **Modified LISS for red cell suspensions** (Id-n°: 05761), 1 x 500 ml

Visit www.bio-rad.com/immunoematology for more information ■ *This Quick Guide does not replace the corresponding box-insert!*

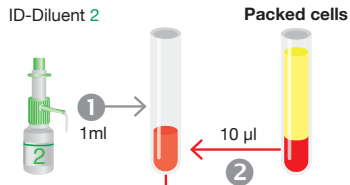
© Bio-Rad Laboratories, Inc.



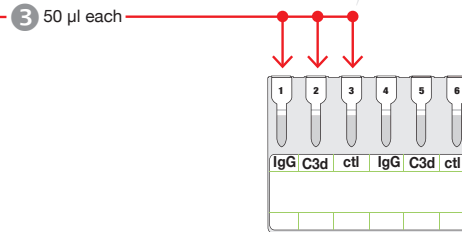
Direct Antiglobulin Test (DAT)

using DC-Screening II

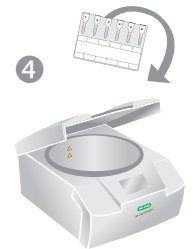
Preparing the Sample Suspension



Pipetting (2 tests per ID-Card)



Centrifugation



5 Read the reaction(s)

Product Pictures



DC-Screening II
(Id-n°: 50560)



ID-Diluent 2
(Id-n°: 05761)
100 ml/500 ml

Ordering Information

Catalog # Description

DC-Screening II

004831 **IgG, C3d, ctl/IgG, C3d, ctl** (Id-n°: 50560), 1 x 12
004837 **IgG, C3d, ctl/IgG, C3d, ctl** (Id-n°: 50560), 24 x 12
004836 **IgG, C3d, ctl/IgG, C3d, ctl** (Id-n°: 50560), 60 x 12

ID-Diluent 2

009260 **Modified LISS for red cell suspensions** (Id-n°: 05761), 2 x 100 ml
009280 **Modified LISS for red cell suspensions** (Id-n°: 05761), 1 x 500 ml

Visit www.bio-rad.com/immunoematology for more information ■ *This Quick Guide does not replace the corresponding box-insert!*

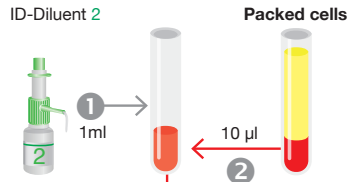
© Bio-Rad Laboratories, Inc.



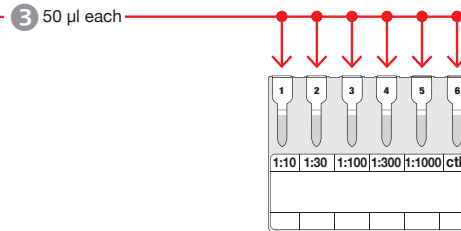
Direct Antiglobulin Test (DAT)

using DAT IgG - Dilution

Preparing the Sample Suspension



Pipetting (1 test per ID-Card)



Centrifugation



Product Pictures



DAT IgG-Dilution
(Id-n°: 50870)



ID-Diluent 2
(Id-n°: 05761)
100 ml/500 ml

Ordering Information

Catalog # Description

DAT IgG-Dilution

004033 1:10, 1:30, 1:100, 1:300, 1:1,000, ctl (Id-n°: 50870) rabbit, 1 x 12

ID-Diluent 2

009260 Modified LISS for red cell suspensions (Id-n°: 05761), 2 x 100 ml

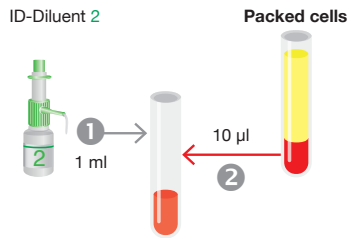
009280 Modified LISS for red cell suspensions (Id-n°: 05761), 1 x 500 ml



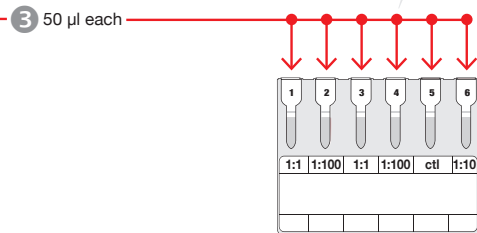
Direct Antiglobulin Test (DAT)

using DAT IgG1/IgG3

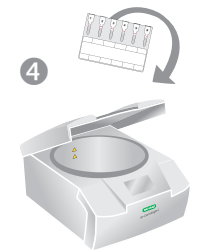
Preparing the Sample Suspension



Pipetting (1 test per ID-Card)



Centrifugation



4
5
Read the reaction(s)

Product Pictures



DAT IgG1/IgG3
(Id-n°: 50890)



ID-Diluent 2
(Id-n°: 05761)
100 ml/500 ml

Ordering Information

Catalog # Description

DAT IgG1/IgG3

004043 IgG subclasses (Id-n°: 50890), 1 x 12

ID-Diluent 2

009260 Modified LISS for red cell suspensions (Id-n°: 05761), 2 x 100 ml

009280 Modified LISS for red cell suspensions (Id-n°: 05761), 1 x 500 ml



Type and Screen

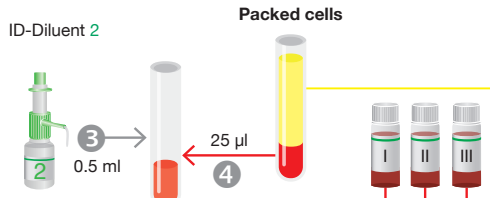
8/01 and 8/02 Type and Screen

Monoclonal Antibodies

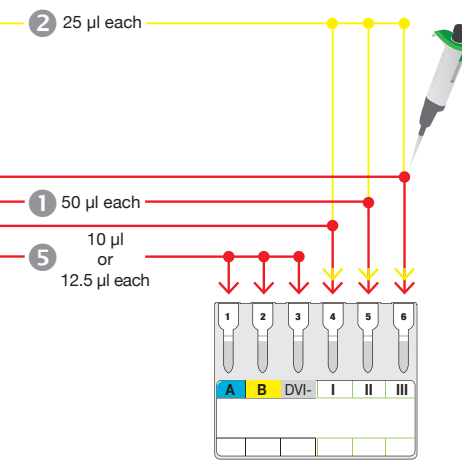
Type and Screen

using DiaClon Type and Screen

Preparing the Sample Suspension



Pipetting (1 test per ID-Card)



Incubation



Centrifugation



Product Pictures



DiaClon Type and Screen
(ld-n°: 50682)



ID-DiaCell I-II-III
(ld-n°: 45184)



ID-Diluent 2
(ld-n°: 05761)
100 ml/500 ml

Ordering Information

Catalog # Description

DiaClon Type + Screen

002437 A, B, DVI-/3 x AHG (ld-n°: 50682), 4 x 12
002431 A, B, DVI-/3 x AHG (ld-n°: 50682), 24 x 12
002439 A, B, DVI-/3 x AHG (ld-n°: 50682), 60 x 12
002438 A, B, DVI-/3 x AHG (ld-n°: 50682), 112 x 12

ID-Diluent 2

009260 Modified LISS for red cell suspensions (ld-n°: 05761), 2 x 100 ml
009280 Modified LISS for red cell suspensions (ld-n°: 05761), 1 x 500 ml

ID-DiaCell I-II-III

004310 Set of 3 vials for IAT and NaCl test R_1^w, R_1, R_2, R_2, rr (ld-n°: 45184), 3 x 10 ml

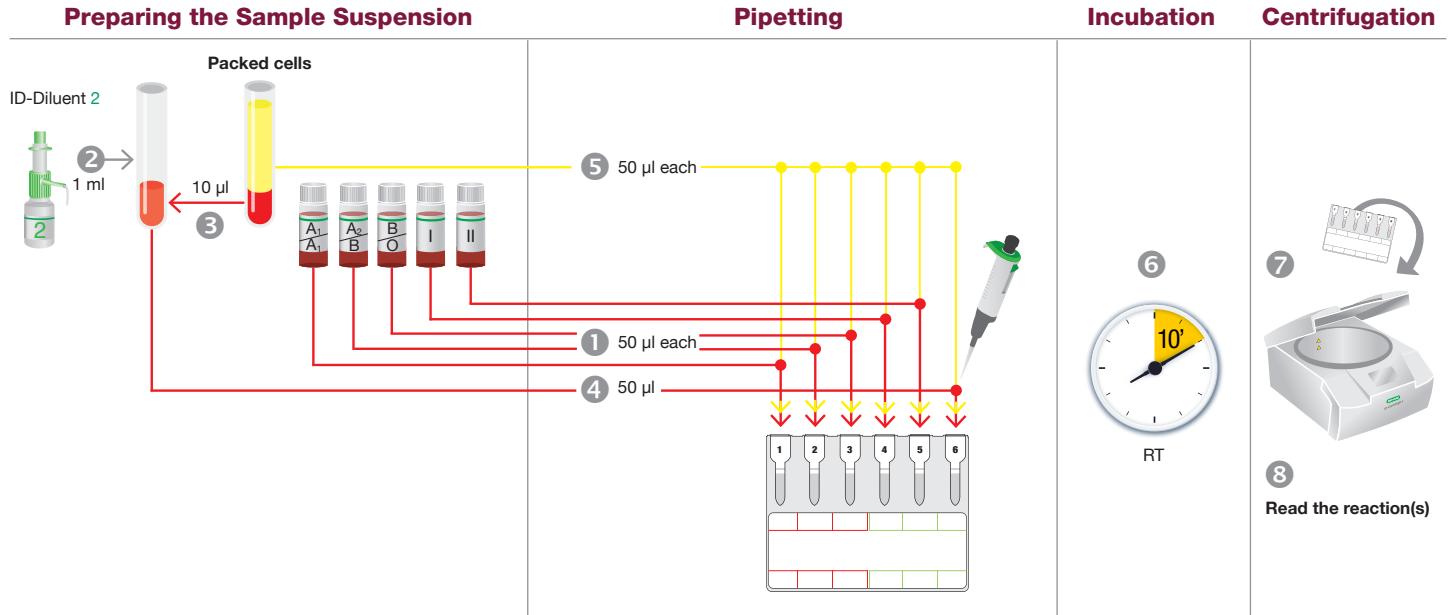


Reverse Grouping with Antibody Screening

9/01 and 9/02	Reverse Grouping with Antibody Screening	ID-DiaCell ABO / I-II + autocontrol
9/03 and 9/04	Reverse Grouping with Antibody Screening	ID-DiaCell ABO / I-II-III
9/05 and 9/06	Reverse Grouping with Antibody Screening	ID-DiaCell ABO / I-II



Reverse Grouping with Antibody Screening using ID-DiaCell ABO/I-II (A₁-A₂-B/I-II) + autocontrol



Product Pictures



Reverse Grouping with Antibody Screening
(Id-n°: 50510)



ID-DiaCell ABO
(Id-n°: 45352)



ID-DiaCell ABO
(Id-n°: 45082)



ID-DiaCell I-II
(Id-n°: 45151)



ID-Diluent 2
(Id-n°: 05761)
100 ml/500 ml

Ordering Information

Catalog # Description

Reverse Grouping with Antibody Screening

003014	A ₁ , A ₂ , B, O/I, II or A ₁ , A ₂ , B/I, II, III or A ₁ , A ₂ , B/I, II, AC (Id-n°: 50510), 4 x 12
003017	A ₁ , A ₂ , B, O/I, II or A ₁ , A ₂ , B/I, II, III or A ₁ , A ₂ , B/I, II, AC (Id-n°: 50510), 24 x 12
003016	A ₁ , A ₂ , B, O/I, II or A ₁ , A ₂ , B/I, II, III or A ₁ , A ₂ , B/I, II, AC (Id-n°: 50510), 60 x 12
003015	A ₁ , A ₂ , B, O/I, II or A ₁ , A ₂ , B/I, II, III or A ₁ , A ₂ , B/I, II, AC (Id-n°: 50510), 112 x 12

ID-DiaCell ABO

003615	Set of 3 vials A ₁ , B, O (Id-n°: 45352), 3 x 10 ml
003617	Set of 3 vials A ₁ , A ₂ , B (Id-n°: 45082), 3 x 10 ml

ID-DiaCell I-II

003613	Set of 2 vials for IAT and NaCl test R ₁ R ₁ , R ₂ R ₂ (Id-n°: 45151), 2 x 10 ml
--------	--

ID-Diluent 2

009260	Modified LISS for red cell suspensions (Id-n°: 05761), 2 x 100 ml
009280	Modified LISS for red cell suspensions (Id-n°: 05761), 1 x 500 ml

Visit www.bio-rad.com/immunohematology for more information ■ This Quick Guide does not replace the corresponding box-insert!

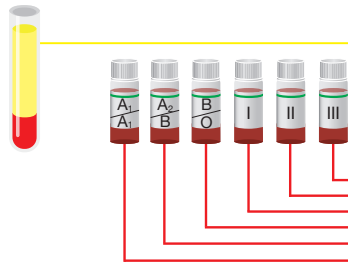
© Bio-Rad Laboratories, Inc.



Reverse Grouping with Antibody Screening using ID-DiaCell ABO/I-II-III (A₁-A₂-B/I-II-III)

Preparing the Sample Suspension

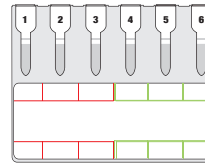
Packed cells



2 50 µl each

1 50 µl each

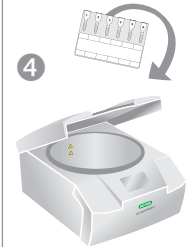
Pipetting



Incubation



Centrifugation



5 Read the reaction(s)

Product Pictures



Reverse Grouping with Antibody Screening
(Id-n°: 50510)



ID-DiaCell ABO
(Id-n°: 45352)



ID-DiaCell I-II-III
(Id-n°: 45184)



ID-DiaCell ABO/I-II-III
(Id-n°: 45012)

Ordering Information

Catalog # Description

Reverse Grouping with Antibody Screening

003014	A ₁ , A ₂ , B, O/I, II or A ₁ , A ₂ , B/I, II, III or A ₁ , A ₂ , B/I, II, AC (Id-n°: 50510), 4 x 12
003017	A ₁ , A ₂ , B, O/I, II or A ₁ , A ₂ , B/I, II, III or A ₁ , A ₂ , B/I, II, AC (Id-n°: 50510), 24 x 12
003016	A ₁ , A ₂ , B, O/I, II or A ₁ , A ₂ , B/I, II, III or A ₁ , A ₂ , B/I, II, AC (Id-n°: 50510), 60 x 12
003015	A ₁ , A ₂ , B, O/I, II or A ₁ , A ₂ , B/I, II, III or A ₁ , A ₂ , B/I, II, AC (Id-n°: 50510), 112 x 12

ID-DiaCell ABO

003615 Set of 3 vials A₁, B, O (Id-n°: 45352), 3 x 10 ml

ID-DiaCell I-II-III

004310 Set of 3 vials for IAT and NaCl test R₁R₁, R₂R₂, rr (Id-n°: 45184), 3 x 10 ml

ID-DiaCell ABO/I-II-III

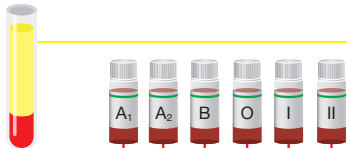
003618 Set of 6 vials A₁, A₂, B/I, II, III (Id-n°: 45012), 6 x 10 ml



Reverse Grouping with Antibody Screening using ID-DiaCell ABO/I-II (A₁-A₂-B-O/I-II)

Preparing the Sample Suspension

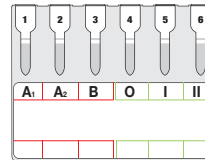
Packed cells



2 50 µl each

1 50 µl each

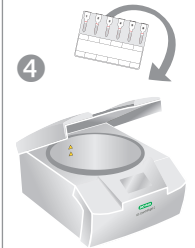
Pipetting



Incubation

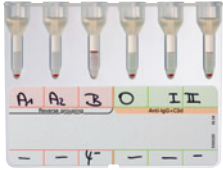


Centrifugation



5 Read the reaction(s)

Product Pictures



**Reverse Grouping with
Antibody Screening**
(Id-n°: 50510)



ID-DiaCell ABO/I-II
(Id-n°: 45002)

Ordering Information

Catalog # Description

Reverse Grouping with Antibody Screening

- | | |
|--------|---|
| 003014 | A ₁ , A ₂ , B, O/I, II or A ₁ , A ₂ , B/I, II, III or A ₁ , A ₂ , B/I, II, AC
(Id-n°: 50510), 4 x 12 |
| 003017 | A ₁ , A ₂ , B, O/I, II or A ₁ , A ₂ , B/I, II, III or A ₁ , A ₂ , B/I, II, AC
(Id-n°: 50510), 24 x 12 |
| 003016 | A ₁ , A ₂ , B, O/I, II or A ₁ , A ₂ , B/I, II, III or A ₁ , A ₂ , B/I, II, AC
(Id-n°: 50510), 60 x 12 |
| 003015 | A ₁ , A ₂ , B, O/I, II or A ₁ , A ₂ , B/I, II, III or A ₁ , A ₂ , B/I, II, AC
(Id-n°: 50510), 112 x 12 |

ID-DiaCell ABO/I-II

- | | |
|--------|---|
| 003610 | Set of 6 vials A ₁ , A ₂ , B, O/I, II (Id-n°: 45002), 6 x 10 ml |
|--------|---|



Antigen Profiles

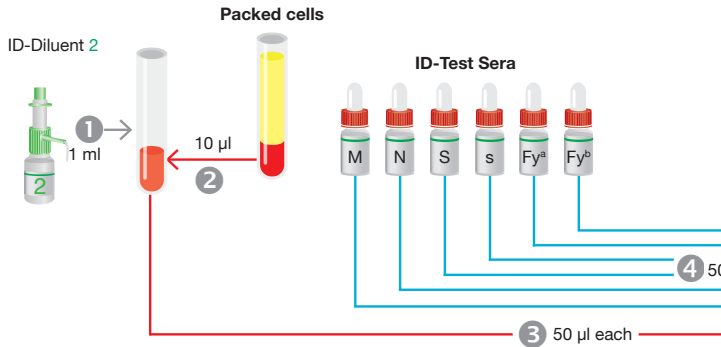
10/01 and 10/02	Antigen Profiles with ID-Antigen Profile III	Liquid Antisera
10/03 and 10/04	Antigen Profiles with ID-Antigen Profile I and ID-Antigen Profile II	ID-Diluent 1



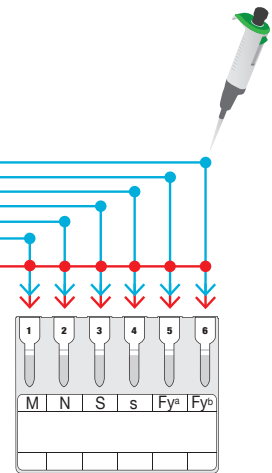
Antigen Profiles with ID-Antigen Profile III

using Liquid Antisera

Preparing the Sample Suspension



Pipetting Pipetting (1 test per ID-Card)



Incubation



Centrifugation



Product Pictures



ID-Antigen Profile III
(Id-n°: 50390)



Test serum
(Id-n°: 45140/45460)



ID-Diluent 2
(Id-n°: 05761)
100 ml/500 ml

Ordering Information

Catalog # Description

ID-Antigen Profile III

008701 ID-Card: M, N, S, s, Fy^a, Fy^b (Id-n°: 50390), 1 x 12

Test serum

008711 Test sera ID-M, N, S, s, Fy^a, Fy^b (Id-n°: 45140), 6 x 1.4 ml

008712 Test sera ID-M, N, S, s, Fy^a, Fy^b (Id-n°: 45460), 6 x 5 ml

ID-Diluent 2

009260 Modified LISS for red cell suspensions (Id-n°: 05761), 2 x 100 ml

009280 Modified LISS for red cell suspensions (Id-n°: 05761), 1 x 500 ml

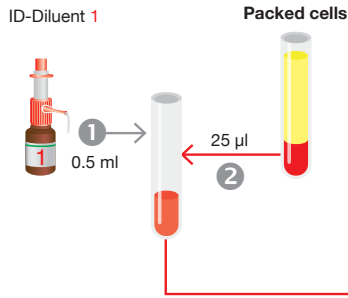
Visit www.bio-rad.com/immunoematology for more information ■ *This Quick Guide does not replace the corresponding box-insert!*

© Bio-Rad Laboratories, Inc.



Antigen Profiles with ID-Antigen Profile I and ID-Antigen Profile II using ID-Diluent 1

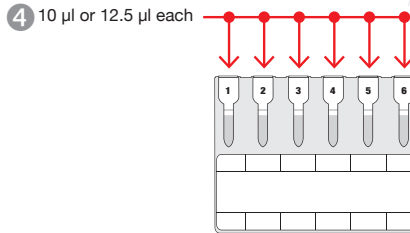
Preparing the Sample Suspension



Incubation



Pipetting (1 test per ID-Card)



Centrifugation



Product Pictures



ID-Antigen Profile I
(Id-n°: 50372)



ID-Antigen Profile II
(Id-n°: 50380)



ID-Diluent 1
(Id-n°: 05751)
100 ml/500 ml

Ordering Information

Catalog # Description

ID-Antigen Profile I

008510 P₁, Le^a, Le^b, Lu^a, Lu^b, ctl (Id-n°: 50372), 1 x 12

ID-Antigen Profile II

008610 k, Kp^a, Kp^b, Jk^a, Jk^b, ctl (Id-n°: 50380), 1 x 12

ID-Diluent 1

009160 **Modified Bromelin solution for red cell suspensions and enzyme tests**
(Id-n°: 05751), 2 x 100 ml

009180 **Modified Bromelin solution for red cell suspensions and enzyme tests**
(Id-n°: 05751), 1 x 500 ml

Visit www.bio-rad.com/immunohematology for more information ■ *This Quick Guide does not replace the corresponding box-insert!*

© Bio-Rad Laboratories, Inc.

Single Antigen Testing

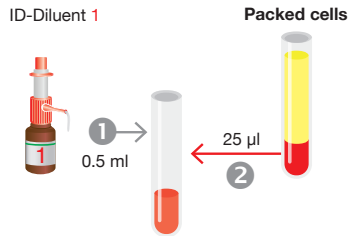
11/01 and 11/02	Single Antigen Testing	ID-Diluent 1
11/03 and 11/04	Single Antigen Testing	ID-Diluent 2
11/05 and 11/06	Single Antigen Testing	ID-Diluent 1
11/07 and 11/08	Single Antigen Testing	ID-Diluent 2
11/09 and 11/10	Single Antigen Testing	IAT using Liquid Antisera
11/11 and 11/12	Single Antigen Testing	IAT using Liquid Antisera
11/13 and 11/14	Single Antigen Testing	IAT using the ID-Card LISS/Coombs
11/15 and 11/16	Single Antigen Testing	ID-Anti-Tj ^a
11/17 and 11/18	Single Antigen Testing	ID-Card NaCl, Enzyme Test and Cold Agglutinins/Lyophilized Antisera



Single Antigen Testing

using ID-Diluent 1

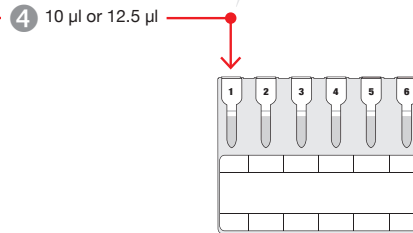
Preparing the Sample Suspension



Incubation



Pipetting (6 tests per ID-Card)



Centrifugation



Product Pictures



Anti-A₁ Absorbed
(Id-n°: 50140)



DiaClon Anti-H
(Id-n°: 50150)



Anti-D
(Id-n°: 50160)



Anti-K
(Id-n°: 50190)



Anti-k
(Id-n°: 50260)



DiaClon Anti-P₁
(Id-n°: 51180)



DiaClon Anti-Le^a
(Id-n°: 50242)



DiaClon Anti-Le^b
(Id-n°: 50250)



DiaClon Anti-Jk^a
(Id-n°: 50270)



DiaClon Anti-Jk^b
(Id-n°: 50280)



Anti-Kp^a
(Id-n°: 50290)



Anti-Kp^b
(Id-n°: 50300)



Anti-Lu^a
(Id-n°: 50310)



Anti-Lu^b
(Id-n°: 50320)



ID-Diluent 1
(Id-n°: 05751)
100 ml/500 ml

Ordering Information

Catalog # Description

Anti-A₁ Absorbed

001811 6 x A₁ (Id-n°: 50140), 1 x 12

DiaClon Anti-H

001911 6 x H (Id-n°: 50150), 1 x 12

Anti-D

001211 6 x D (Id-n°: 50160), 1 x 12

001213 6 x D (Id-n°: 50160), 24 x 12

Anti-K

002111 6 x K (Id-n°: 50190), 1 x 12

Anti-k

007251 6 x k (Id-n°: 50260), 1 x 12

DiaClon Anti-P₁

007212 6 x P₁ (Id-n°: 51180), 1 x 12

DiaClon Anti-Le^a

007221 6 x Le^a (Id-n°: 50242), 1 x 12

DiaClon Anti-Le^b

007231 6 x Le^b (Id-n°: 50250), 1 x 12

DiaClon Anti-Jk^a

007321 6 x Jk^a (Id-n°: 50270), 1 x 12

DiaClon Anti-Jk^b

007331 6 x Jk^b (Id-n°: 50280), 1 x 12

Anti-Kp^a

007301 6 x Kp^a (Id-n°: 50290), 1 x 12

Anti-Kp^b

007311 6 x Kp^b (Id-n°: 50300), 1 x 12

Anti-Lu^a

007351 6 x Lu^a (Id-n°: 50310), 1 x 12

Anti-Lu^b

007361 6 x Lu^b (Id-n°: 50320), 1 x 12

ID-Diluent 1

009160 Modified Bromelin solution for red cell suspensions and enzyme tests

(Id-n°: 05751), 2 x 100 ml

009180 Modified Bromelin solution for red cell suspensions and enzyme tests

(Id-n°: 05751), 1 x 500 ml

Visit www.bio-rad.com/immunoematology for more information ■ This Quick Guide does not replace the corresponding box-insert!

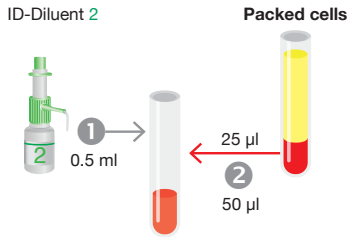
© Bio-Rad Laboratories, Inc.



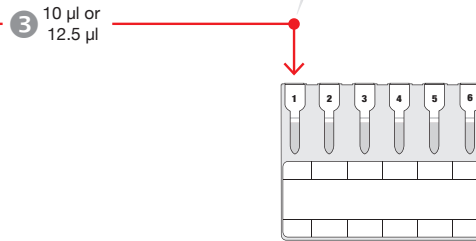
Single Antigen Testing

using ID-Diluent 2

Preparing the Sample Suspension



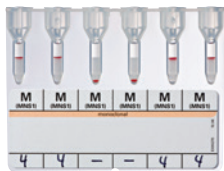
Pipetting (6 tests per ID-Card)



Centrifugation



Product Pictures



DiaClon Anti-M
(Id-n°: 50212)



DiaClon Anti-N
(Id-n°: 50221)



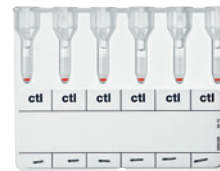
DiaClon Anti-DVI neg.
(Id-n°: 50171)



DiaClon Anti-K
(Id-n°: 50200)



DiaClon Anti-C^w
(Id-n°: 52010)



Control Card A
(Id-n°: 52020)



ID-Diluent 2
(Id-n°: 05761)
100 ml/500 ml

The ID-Card Control Card A is designed to validate the reactions obtained with the ID-Cards DiaClon Anti-C^w and DiaClon Rh-Subgroups + C^w + K.

Ordering Information

Catalog # Description

DiaClon Anti-M

007011 6 x M (Id-n°: 50212), 1 x 12

DiaClon Anti-N

007111 6 x N (Id-n°: 50221), 1 x 12

DiaClon Anti-DVI neg.

001251 6 x DVI neg. (Id-n°: 50171), 1 x 12
001252 6 x DVI neg. (Id-n°: 50171), 24 x 12

DiaClon Anti-K

002121 6 x K (Id-n°: 50200), 1 x 12

DiaClon Anti-C^w

001321 6 x C^w (Id-n°: 52010), 1 x 12

Control Card A

001711 6 x ctl (Id-n°: 52020), 1 x 12
001714 6 x ctl (Id-n°: 52020), 4 x 12

ID-Diluent 2

009260 Modified LISS for red cell suspensions
(Id-n°: 05761), 2 x 100 ml
009280 Modified LISS for red cell suspensions
(Id-n°: 05761), 1 x 500 ml

Visit www.bio-rad.com/immunoematology for more information ■ This Quick Guide does not replace the corresponding box-insert!

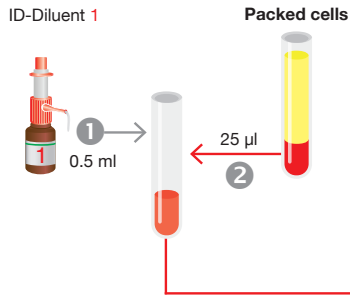
© Bio-Rad Laboratories, Inc.



Single Antigen Testing

using ID-Diluent 1

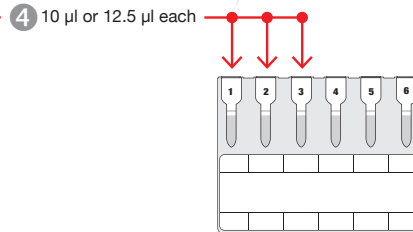
Preparing the Sample Suspension



Incubation



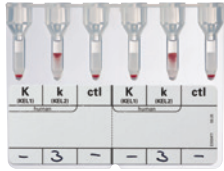
Pipetting (2 tests per ID-Card)



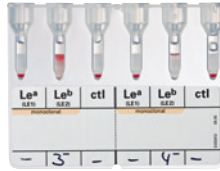
Centrifugation



Product Pictures



Anti-K/k
(Id-n°: 51220)



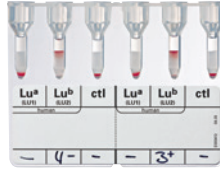
DiaClon Anti-Le^a/Le^b
(Id-n°: 51240)



DiaClon Anti-Jk^a/Jk^b
(Id-n°: 51250)



Anti-Kp^a/Kp^b
(Id-n°: 51260)



Anti-Lu^a/Lu^b
(Id-n°: 51230)



ID-Diluent 1
(Id-n°: 05751)
100 ml/500 ml

Ordering Information

Catalog # Description

Anti-K/k

006021 K, k, ctl/K, k, ctl (Id-n°: 51220) human, 1 x 12

DiaClon Anti-Le^a/Le^b

006041 Le^a, Le^b, ctl/Le^a, Le^b, ctl (Id-n°: 51241), 1 x 12

DiaClon Anti-Jk^a/Jk^b

006051 Jk^a, Jk^b, ctl/Jk^a, Jk^b, ctl (Id-n°: 51250), 1 x 12

Anti-Kp^a/Kp^b

006061 Kp^a, Kp^b, ctl/Kp^a, Kp^b, ctl (Id-n°: 51260) human, 1 x 12

Anti-Lu^a/Lu^b

006031 Lu^a, Lu^b, ctl/Lu^a, Lu^b, ctl (Id-n°: 51230) human, 1 x 12

ID-Diluent 1

009160 **Modified Bromelin solution for red cell suspensions and enzyme tests**
(Id-n°: 05751), 2 x 100 ml

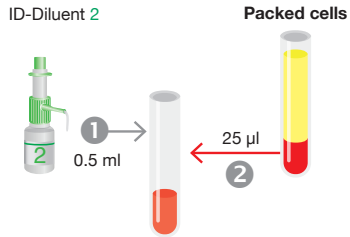
009180 **Modified Bromelin solution for red cell suspensions and enzyme tests**
(Id-n°: 05751), 1 x 500 ml



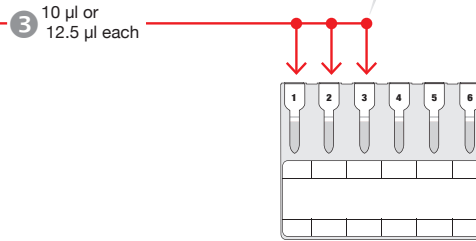
Single Antigen Testing

using ID-Diluent 2

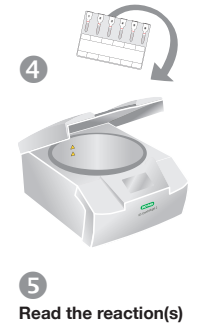
Preparing the Sample Suspension



Pipetting (2 tests per ID-Card)



Centrifugation



Product Pictures



DiaClon Anti-M/N
(Id-n°: 51210)



ID-Diluent 2
(Id-n°: 05761)
100 ml/500 ml

Ordering Information

Catalog # Description

DiaClon Anti-M/N

006011 M, N, cti/M, N, cti (Id-n°: 51210), 1 x 12

ID-Diluent 2

009260 Modified LISS for red cell suspensions (Id-n°: 05761), 2 x 100 ml

009280 Modified LISS for red cell suspensions (Id-n°: 05761), 1 x 500 ml

Visit www.bio-rad.com/immunoematology for more information ■ *This Quick Guide does not replace the corresponding box-insert!*

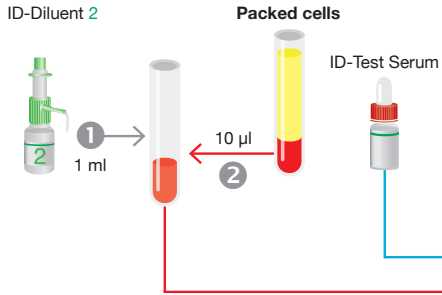
© Bio-Rad Laboratories, Inc.



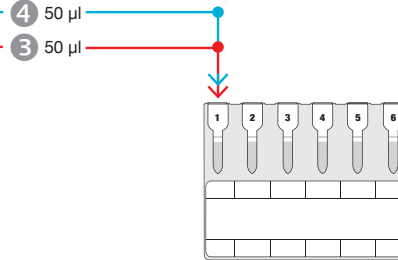
Single Antigen Testing

in IAT using Liquid Antisera

Preparing the Sample Suspension



Pipetting (6 tests per ID-Card)



Incubation



Centrifugation



Product Pictures



ID-Card Fy^a
(Id-n°: 50350)



ID-Anti-Fy^a
(Id-n°: 09210)



ID-Card Fy^b
(Id-n°: 50360)



ID-Anti-Fy^b
(Id-n°: 09310)



ID-Card S
(Id-n°: 50330)



ID-Anti-S
(Id-n°: 09010)



ID-Card s
(Id-n°: 50340)



ID-Anti-s
(Id-n°: 09110)



ID-Diluent 2
(Id-n°: 05761)
100 ml/500 ml

Ordering Information

Catalog # Description

ID-Card Fy^a, ID-Anti-Fy^a

007270 **ID-Card Fy^a: 6 x Fy^a**
(Id-n°: 50350), 1 x 12

007271 **Test serum ID-Anti-Fy^a:**
(Id-n°: 09210) human, 1 x 3.6 ml

007272 **Test serum ID-Anti-Fy^a:**
(Id-n°: 09210) human, 1 x 5 ml

ID-Card Fy^b, ID-Anti-Fy^b

007280 **ID-Card Fy^b: 6 x Fy^b**
(Id-n°: 50360), 1 x 12

007281 **Test serum ID-Anti-Fy^b:**
(Id-n°: 09310) human, 1 x 3.6 ml

007282 **Test serum ID-Anti-Fy^b:**
(Id-n°: 09310) human, 1 x 5 ml

ID-Card S, ID-Anti-S

007130 **ID-Card S: 6 x S**
(Id-n°: 50330), 1 x 12

007131 **Test serum ID-Anti-S:**
(Id-n°: 09010) human, 1 x 3.6 ml

007132 **Test serum ID-Anti-S:**
(Id-n°: 09010) human, 1 x 5 ml

ID-Card s, ID-Anti-s

007140 **ID-Card s: 6 x s**
(Id-n°: 50340), 1 x 12

007141 **Test serum ID-Anti-s:**
(Id-n°: 09110) human, 1 x 3.6 ml

007142 **Test serum ID-Anti-s:**
(Id-n°: 09110) human, 1 x 5 ml

ID-Diluent 2

009260 **Modified LISS for red cell suspensions**
(Id-n°: 05761), 2 x 100 ml

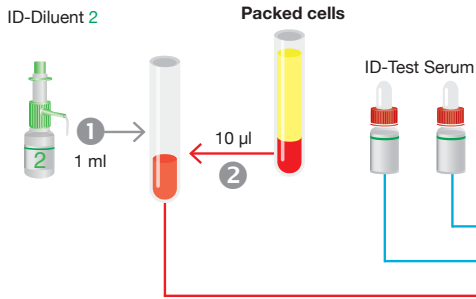
009280 **Modified LISS for red cell suspensions**
(Id-n°: 05761), 1 x 500 ml



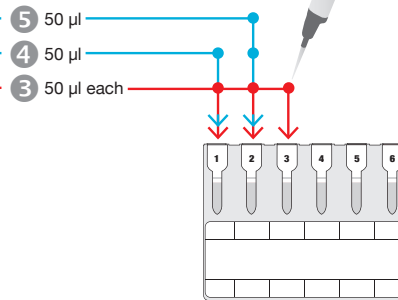
Single Antigen Testing

in IAT using Liquid Antisera

Preparing the Sample Suspension



Pipetting (2 tests per ID-Card)



Incubation



Centrifugation



Product Pictures



ID-Card Fy^a/Fy^b
(Id-n°: 51270)



ID-Anti-Fy^a/Fy^b
(Id-n°: 46180)
(Id-n°: 09210/09310)



ID-Card S/s
(Id-n°: 51280)



ID-Anti-S/s
(Id-n°: 46190)
(Id-n°: 09010/09110)



ID-Diluent 2
(Id-n°: 05761)
100 ml/500 ml

Ordering Information

Catalog # Description

ID-Card Fy^a/Fy^b, ID-Anti-Fy^a/Fy^b

006110 ID-Card Fy^a/Fy^b: Fy^a, Fy^b, ctl/Fy^a, Fy^b, ctl (Id-n°: 51270), 1 x 12
 006111 Test serum ID-Anti-Fy^a/Fy^b: (Id-n°: 46180) human, 2 x 1.4 ml
 007272 Test serum ID-Anti-Fy^a: (Id-n°: 09210) human, 1 x 5 ml
 007282 Test serum ID-Anti-Fy^b: (Id-n°: 09310) human, 1 x 5 ml

ID-Card S/s, ID-Anti-S/s

006120 ID-Card S/s: S, s, ctl/S, s, ctl (Id-n°: 51280), 1 x 12
 006121 Test serum ID-Anti-S/s: (Id-n°: 46190) human, 2 x 1.4 ml
 007132 Test serum ID-Anti-S: (Id-n°: 09010) human, 1 x 5 ml
 007142 Test serum ID-Anti-s: (Id-n°: 09110) human, 1 x 5 ml

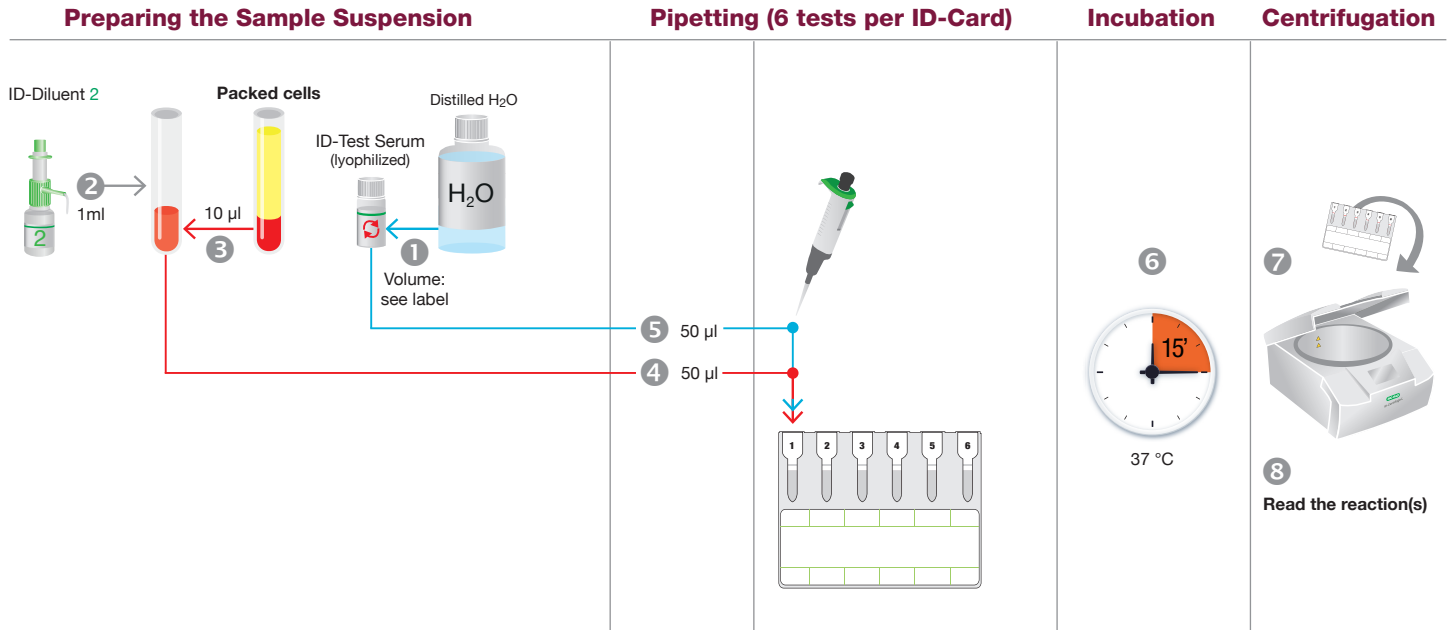
ID-Diluent 2

009260 Modified LISS for red cell suspensions (Id-n°: 05761), 2 x 100 ml
 009280 Modified LISS for red cell suspensions (Id-n°: 05761), 1 x 500 ml

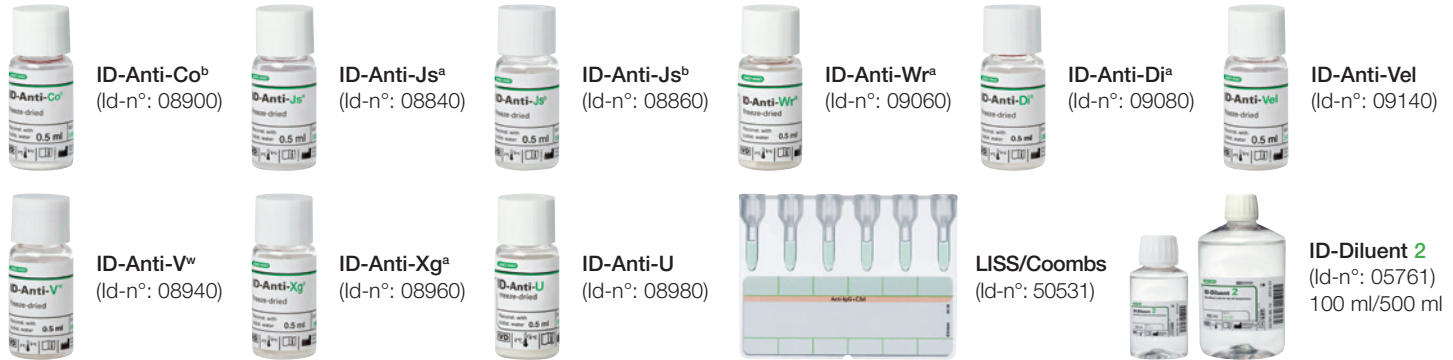


Single Antigen Testing

in IAT using the ID-Card LISS/Coombs



Product Pictures



Ordering Information

Catalog # Description

ID-Anti-Co^b

007440 ID-Anti-Co^b: vial (Id-n°: 08900), 1 x 0.5 ml

ID-Anti-Js^a

007400 ID-Anti-Js^a: vial (Id-n°: 08840), 1 x 0.5 ml

ID-Anti-Js^b

007390 ID-Anti-Js^b: vial (Id-n°: 08860), 1 x 0.5 ml

ID-Anti-Wr^a

007410 ID-Anti-Wr^a: vial (Id-n°: 09060), 1 x 0.5 ml

ID-Anti-Di^a

007420 ID-Anti-Di^a: vial (Id-n°: 09080), 1 x 0.5 ml

ID-Anti-Vel

007430 ID-Anti-Vel: vial (Id-n°: 09140), 1 x 0.5 ml

ID-Anti-V^w

007450 ID-Anti-V^w: vial (Id-n°: 08940), 1 x 0.5 ml

ID-Anti-Xg^a

007460 ID-Anti-Xg^a: vial (Id-n°: 08960), 1 x 0.5 ml

ID-Anti-U

007470 ID-Anti-U: vial (Id-n°: 08980), 1 x 0.5 ml

LISS/Coombs

004014 6 x AHG (Anti-IgG + C3d) tests

(Id-n°: 50531) rabbit, 4 x 12

004017 6 x AHG (Anti-IgG + C3d) tests

(Id-n°: 50531) rabbit, 24 x 12

004016 6 x AHG (Anti-IgG + C3d) tests

(Id-n°: 50531) rabbit, 60 x 12

004015 6 x AHG (Anti-IgG + C3d) tests

(Id-n°: 50531) rabbit, 112 x 12

ID-Diluent 2

009260 Modified LISS for red cell suspensions

(Id-n°: 05761), 2 x 100 ml

009280 Modified LISS for red cell suspensions

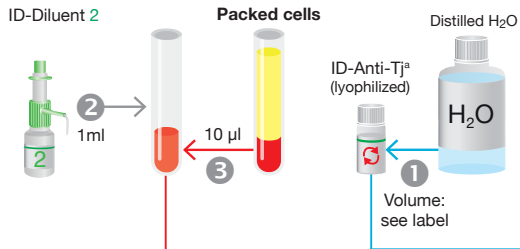
(Id-n°: 05761), 1 x 500 ml



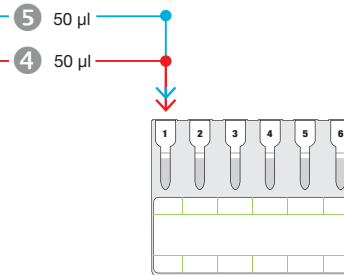
Single Antigen Testing

in IAT using ID-Anti-Tj^a

Preparing the Sample Suspension



Pipetting (6 tests per ID-Card)



Incubation



Centrifugation



Product Pictures



Coombs Anti-IgG
(Id-n°: 50540)



ID-Anti-Tj^a
(Id-n°: 09040)



ID-Diluent 2
(Id-n°: 05761)
100 ml/500 ml

Ordering Information

Catalog # Description

Coombs Anti-IgG

004024 **6 x AHG (Anti-IgG) tests** (Id-n°: 50540) rabbit, 4 x 12
004027 **6 x AHG (Anti-IgG) tests** (Id-n°: 50540) rabbit, 24 x 12
004026 **6 x AHG (Anti-IgG) tests** (Id-n°: 50540) rabbit, 60 x 12
004025 **6 x AHG (Anti-IgG) tests** (Id-n°: 50540) rabbit, 112 x 12

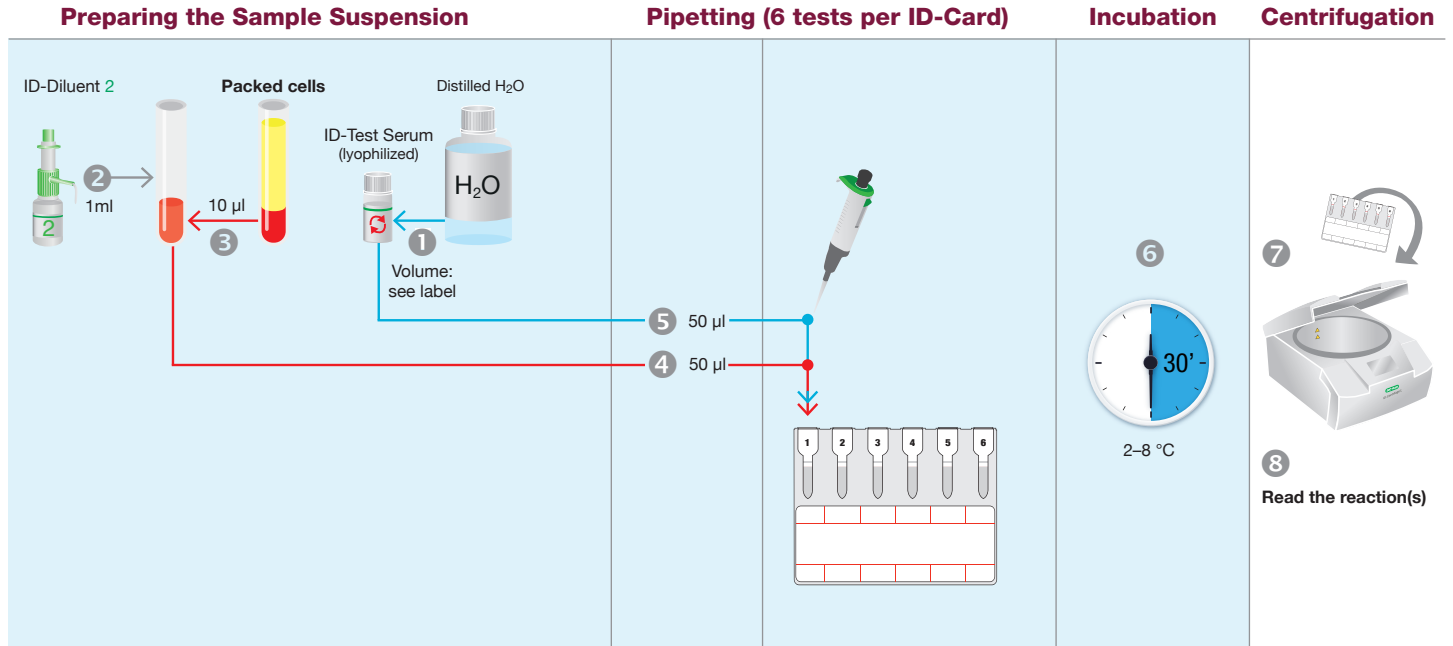
ID-Anti-Tj^a

007490 **ID-Anti-Tj^a: vial** (Id-n°: 09040), 1 x 0.5 ml

ID-Diluent 2

009260 **Modified LISS for red cell suspensions** (Id-n°: 05761), 2 x 100 ml
009280 **Modified LISS for red cell suspensions** (Id-n°: 05761), 1 x 500 ml

Single Antigen Testing using the ID-Card NaCl, Enzyme Test and Cold Agglutinins and Lyophilized Antisera



Product Pictures



NaCl, Enzyme Test and Cold Agglutinins
(Id-n°: 50520)



ID-Anti-I
(Id-n°: 08830)



ID-Anti-i
(Id-n°: 08880)



ID-Diluent 2
(Id-n°: 05761)
100 ml/500 ml

Ordering Information

Catalog # Description

NaCl, Enzyme Test and Cold Agglutinins

005014	A₁, A₂, B/A₁, A₂, B or A₁, B/A₁, B/A₁, B or IP, IIP, IIIP or IP, IIP, AC (Id-n°: 50520), 4 x 12
005017	A₁, A₂, B/A₁, A₂, B or A₁, B/A₁, B/A₁, B or IP, IIP, IIIP or IP, IIP, AC (Id-n°: 50520), 24 x 12
005016	A₁, A₂, B/A₁, A₂, B or A₁, B/A₁, B/A₁, B or IP, IIP, IIIP or IP, IIP, AC (Id-n°: 50520), 60 x 12
005015	A₁, A₂, B/A₁, A₂, B or A₁, B/A₁, B/A₁, B or IP, IIP, IIIP or IP, IIP, AC (Id-n°: 50520), 112 x 12

ID-Anti-I

007371 **ID-Anti-I: vial** (Id-n°: 08830), 1 x 0.5 ml

ID-Anti-i

007380 **ID-Anti-i: vial** (Id-n°: 08880), 1 x 0.5 ml

ID-Diluent 2

009260 **Modified LISS for red cell suspensions** (Id-n°: 05761), 2 x 100 ml
009280 **Modified LISS for red cell suspensions** (Id-n°: 05761), 1 x 500 ml

BIO-RAD is a trademark of Bio-Rad Laboratories, Inc.
DIACELL and DIAPANEL are trademarks of Bio-Rad Europe, GmbH in certain jurisdictions.

BIO-RAD

**Bio-Rad
Laboratories, Inc.**

**For further information, please contact the Bio-Rad office nearest you
or visit our website at www.bio-rad.com/diagnostics**

**Clinical
Diagnostics Group**

Website www.bio-rad.com/diagnostics **Australia** +61 (2) 9914 2800 **Austria** +43 (0) 1 877 89 01 9 **Belgium** +32 (0) 3 710 53 00 **Brazil** +55 11 3065 7550 **Canada** +1 514 334 4372
China +86 21 6169 8500 **Czech Republic** +420 241 431 660 **Denmark** +45 44 52 10 00 **Finland** +358 9 804 22 00 **France** +33 (0)1 47 95 60 00 **Germany** +49 (0) 89 31884 393
Greece +30 210 7774396 **Hong Kong** +85 2 2789 3300 **Hungary** +36 1 459 6190 **India** +91 124 4029300 **Israel** +972 03 963 6025 **Italy** +39 024 94 86 600
Japan +81 3 6361 7070 **Korea** +82 080 007 7373 **Mexico** +52 (55) 5488 7670 **The Netherlands** +31 (0)318 540 666 **New Zealand** +64 (9)415 2280 **Norway** +47 23 38 41 30
Poland +48 22 331 99 99 **Portugal** +351 21 47 27 700 **Russia** +7 495 721 1404 **Singapore** +65 6415 3170 **South Africa** +27 11 442 8508 **Spain** +34 91 490 6580
Sweden +46 844 98053 **Switzerland** +41 (0) 61 717 9555 **Taiwan** +886 (2) 2578-7189 **Thailand** (662) 651 8311 **United Kingdom** +44 (0)1923 471301