

**BILIARY**  
**LONGWIRE**



# 3-LUMEN PAPILOTOME

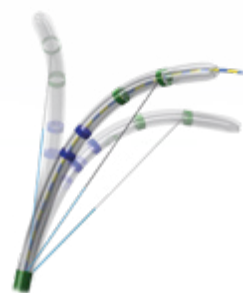
## FOR PRECISE WIRE GUIDANCE AND CANNULATION

Positioning, cannulation and resection are the decisive features of a safe and successful papillotomy. The 3-lumen papillotome from MICRO-TECH meets these requirements in every way: Emerging from the working channel in the correct position, the atraumatic tip, tapered to 5 Fr, supports cannulation and the resection is done reliably at the "11 o'clock" marker. Maximum safety during resection

is also provided by optional proximal insulation of the cutting wire. The three lumens for cutting wire, guide wire and contrast media provide for a high level of safety and efficient contrast injection. Thanks to the ergonomic 3-ring grip handle, this papillotome is highly user-friendly and easy to control.

### SPECIFIC CHARACTERISTICS

- 3 lumen for guide wire, cutting wire and contrast injection
- Optional insulation of proximal cutting wire
- Cutting direction at 11 o'clock
- Filiform tip, tapered to 5 Fr
- Working length: 2.000 mm
- Outer diameter: 2.5 mm
- Guide wire compatible fully mobile up to 0.035 inch



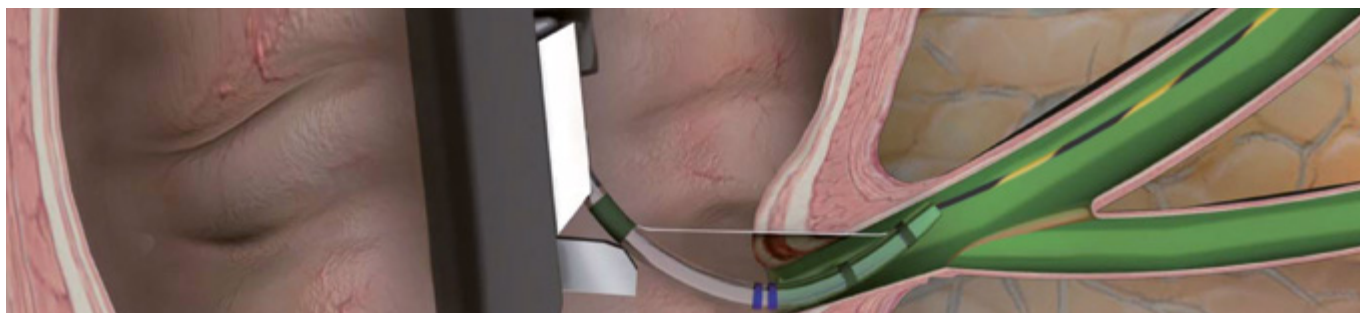
Precise adjustment function



Tip: Precut



Tip: Needle knife



## SPECIFICATIONS

REF	Tip length mm	Cutting wire length mm	Partly insulated cutting wire	Preloaded guide wire	Ø working channel mm
<b>PAPILLOTOME, 3-LUMEN, CONE-TIP</b>					
DSP-30020-111111	0	20	No	No	2.8
DSP-30020-111211	0	20	Yes	No	2.8
DSP-30025-111111	0	25	No	No	2.8
DSP-30025-111211	0	25	Yes	No	2.8
DSP-30030-111111	0	30	No	No	2.8
DSP-30030-111211	0	30	Yes	No	2.8
DSP-30220-111111	2	20	No	No	2.8
DSP-30220-111211	2	20	Yes	No	2.8
DSP-30225-111111	2	25	No	No	2.8
DSP-30225-111211	2	25	Yes	No	2.8
DSP-30230-111111	2	30	No	No	2.8
DSP-30230-111211	2	30	Yes	No	2.8
DSP-30520-111111	5	20	No	No	2.8
DSP-30520-111211	5	20	Yes	No	2.8
DSP-30525-111111	5	25	No	No	2.8
DSP-30525-111211	5	25	Yes	No	2.8
DSP-30530-111111	5	30	No	No	2.8
DSP-30530-111211	5	30	Yes	No	2.8
DSP-30020-111121	0	20	No	Yes	2.8
DSP-30020-111221	0	20	Yes	Yes	2.8
DSP-30025-111121	0	25	No	Yes	2.8
DSP-30025-111221	0	25	Yes	Yes	2.8
DSP-30030-111121	0	30	No	Yes	2.8
DSP-30030-111221	0	30	Yes	Yes	2.8
DSP-30220-111121	2	20	No	Yes	2.8
DSP-30220-111221	2	20	Yes	Yes	2.8
DSP-30225-111121	2	25	No	Yes	2.8
DSP-30225-111221	2	25	Yes	Yes	2.8
DSP-30230-111121	2	30	No	Yes	2.8
DSP-30230-111221	2	30	Yes	Yes	2.8
DSP-30520-111121	5	20	No	Yes	2.8
DSP-30520-111221	5	20	Yes	Yes	2.8
DSP-30525-111121	5	25	No	Yes	2.8
DSP-30525-111221	5	25	Yes	Yes	2.8
DSP-30530-111121	5	30	No	Yes	2.8
DSP-30530-111221	5	30	Yes	Yes	2.8
<b>PAPILLOTOME, 3-LUMEN, NEEDLE KNIFE</b>					
DSP-30505-121111	0	5	No	No	2.8
DSP-30505-121211	0	5	Yes	No	2.8
DSP-30507-121111	0	7	No	No	2.8
DSP-30507-121211	0	7	Yes	No	2.8

Recommended guide wires 0.035": MTN-BM 89/45-A (straight), 600358-5 (straight), 600359-5 (J-Tip)

Recommended guide wires 0.025": MTN-BM 63/26-A (straight) and 600384-5 (straight)

Packaging unit: 2 pieces



# GUIDE WIRES

## THE RELIABLE CHOICE FOR ERCP

All guide wires are manufactured out of bending-resistant and torsion-proof Nitinol. Their hydrophilic coated tips, allow the wires to safely find their way even into areas and stenoses which are hard to reach. This is supported by the wire's high rigidity and controllability. Hence the guide

wires are not only meant for sophisticated stent placements, but are also perfectly suited for ERCP. The high radiopacity of the flexible hydrophilic tip facilitates exact stent placement under visual radiological control.

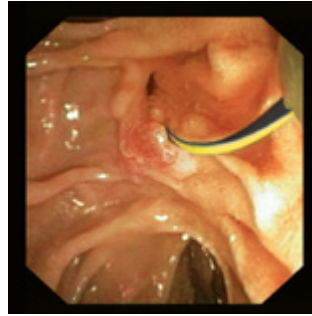
### SPECIFIC CHARACTERISTICS

- Non-kinking nitinol wire
- High level of rigidity and guidability
- Hydrophilic, atraumatic tip
- Working length: 4500 mm
- High level of radiopacity



### SUCCESSFUL IN PRACTICAL ROUTINE WORK

Bending resistance and rigidity account for the very good feeding properties of guide wires. In daily applications they convince by their precision, which is primarily guaranteed by the efficient transmission of the rotatory and translatory motion all the way to the tip of the wire, as applied by the surgical assistant. This makes it possible to reach into even anatomically difficult passages with ease. In addition, the tip of each wire can be perfectly seen in the X-ray control image, allowing for optimal stent positioning.



Endoscopic view



X-ray

### DISPENSER FOR EASY OPERATION

The wire can be easily ejected and retracted by means of this innovative dispenser. Owing to its compact design, the dispenser is handy and easy to operate. Rinsing the wire is also easy and fast when using the dispenser.

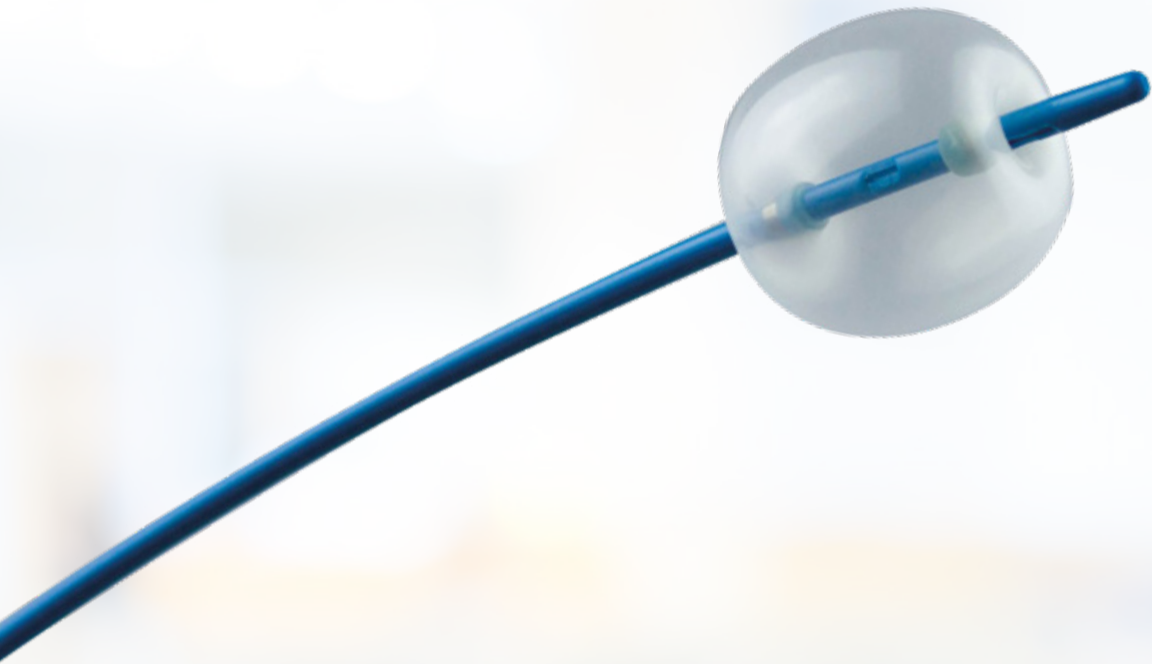


Dispenser guide wires

## SPECIFICATIONS

REF	Ø inches	Total length mm	Tip length mm	Tip form	Set-up	Covering
<b>CLASSIC GUIDE WIRE</b>						
600382-5	0.035"	4200	130	straight	hydrophilic, radiopaque	extra stiff $\pm$ 0.035"
<b>HYDRO-SLIDE GUIDE WIRE</b>						
MTN-BM-89/45-A	0.035"	4500	60	straight	hydrophilic, radiopaque	blue-yellow
MTN-BM-89/45-A-J	0.035"	4500	60	J-form	hydrophilic, radiopaque	blue-yellow
MTN-BM-63/45-A	0.025"	4500	60	straight	hydrophilic, radiopaque	blue-yellow
MTN-BM-63/45-A-S	0.025"	4500	60	straight	hydrophilic, radiopaque	extra stiff $\pm$ 0.035"
MTN-BM-63/45-A-J	0.025"	4500	60	J-form	hydrophilic, radiopaque	blue-yellow
MTN-BM-63/45-A-J-S	0.025"	4500	30	J-form	hydrophilic, radiopaque	extra stiff $\pm$ 0.035"
MTN-BM-53/45-A	0.021"	4500	60	straight	hydrophilic, radiopaque	blue-yellow
MTN-BM-45/45-A	0.018"	4500	60	straight	hydrophilic, radiopaque	blue-yellow

Packaging unit: Classic guide wire: 1 piece, Hydro-Slide guide wire: 2 pieces



# STONE EXTRACTION BALLOONS

## ONE BALLOON, THREE DIAMETERS

MICRO-TECH's vast product range includes high-quality 3-lumen extraction balloons for reliable removal of small stones and sludge from the bile duct. The conical, atraumatic tip of the catheter makes for easy, precise positioning using the two x-ray markers. The cylindrical balloon itself is made of high-quality latex and can be expanded to three different diameters. A specially calibrated single-use

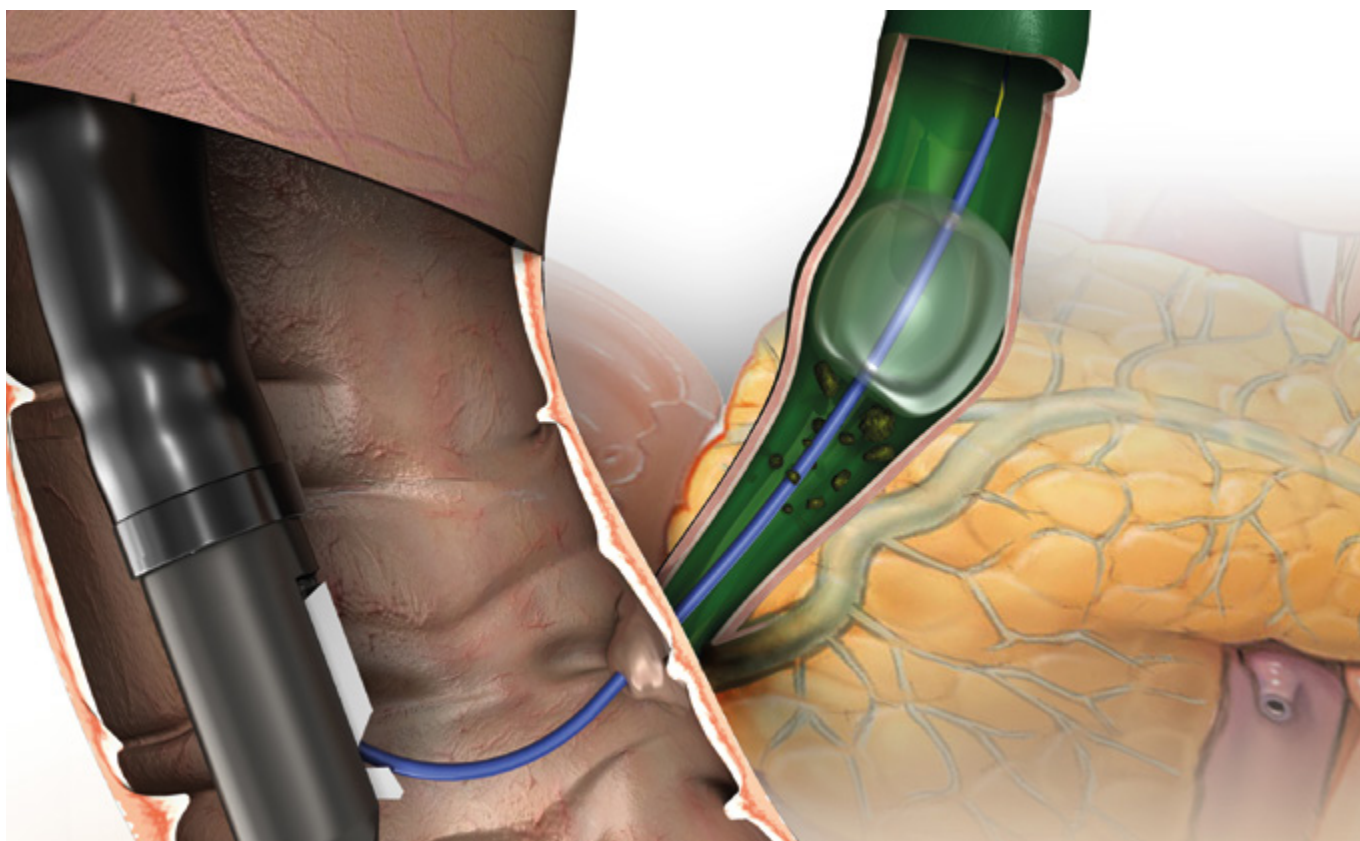
syringe is supplied for each balloon diameter. Following insufflation, the balloon surface lies flat against the bile duct wall, enabling efficient and complete cleaning of the bile duct. A separate lumen for a 0.035 inch guidewire and one for contrast media, provide for ease of handling and contrast injection.

### SPECIFIC CHARACTERISTICS

- 3-stage balloons
- One calibrated tip per diameter
- 3 lumens for insufflation, guidewire and contrast agent
- High X-ray visibility (radiopacity)



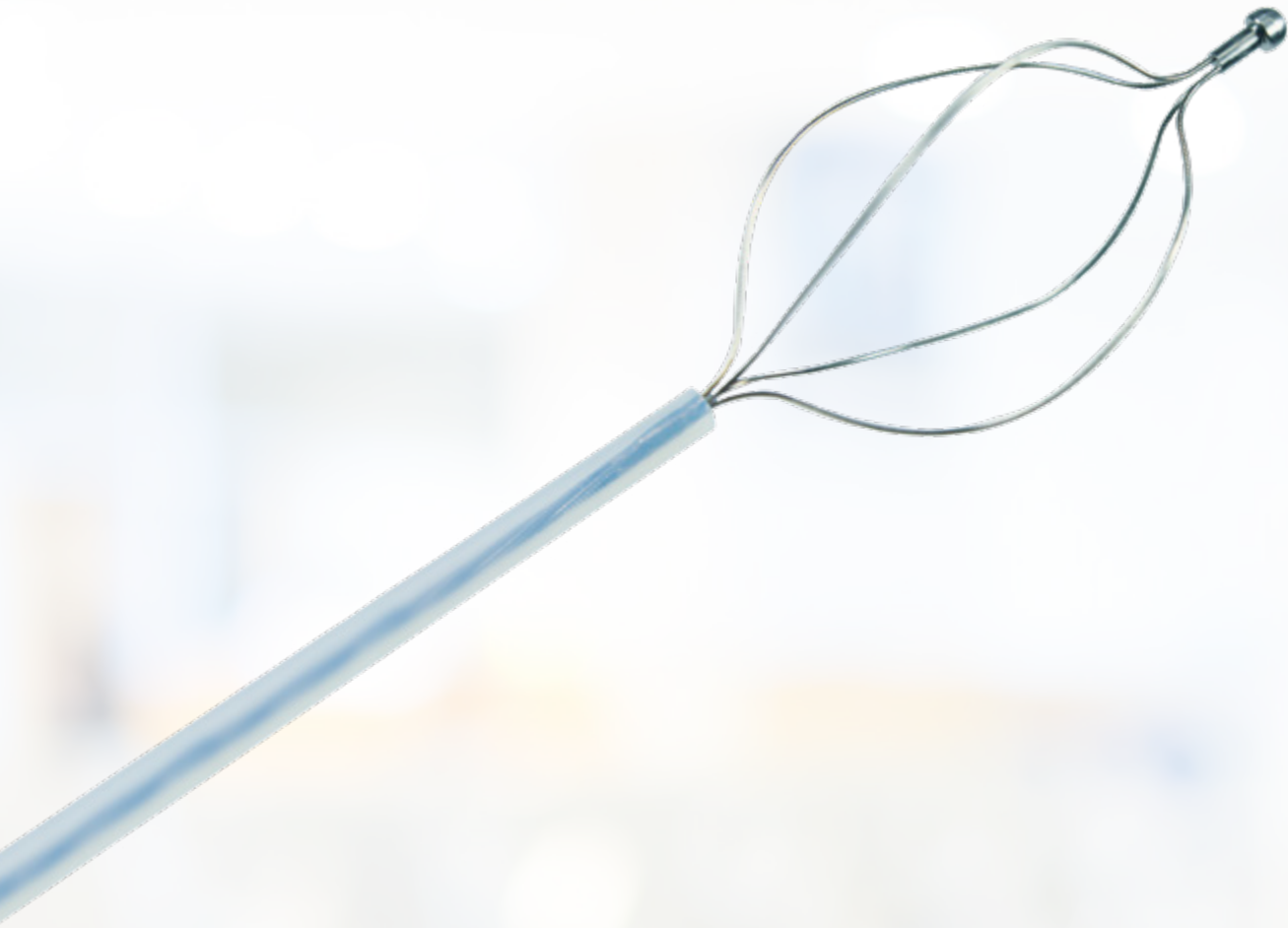
3-lumen stone extraction balloon from MICRO-TECH



## SPECIFICATIONS

REF	Ø inches	Total length mm	Tip length mm	Tip form	Set-up	Covering
<b>CLASSIC GUIDE WIRE</b>						
600382-5	0.035"	4200	130	straight	hydrophilic, radiopaque	extra stiff $\pm$ 0.035"
<b>HYDRO-SLIDE GUIDE WIRE</b>						
MTN-BM-63/45-A-S	0.025"	4500	60	straight	hydrophilic, radiopaque	extra stiff $\pm$ 0.035"
MTN-BM-63/45-A-J-S	0.025"	4500	60	J-form	hydrophilic, radiopaque	extra stiff $\pm$ 0.035"
REF		Injection	Lumen	Catheter Ø Fr.	Balloon Ø mm	Working length mm
<b>STONE EXTRACTION BALLOONS</b>						
SRB-T-9/12/15-20		Above (distal to the balloon)	3	7	9 / 12 / 15	2000
SRB-T-12/15/18-20		Above (distal to the balloon)	3	7	12 / 15 / 18	2000
SRB-T-15/18/21-20		Above (distal to the balloon)	3	7	15 / 18 / 21	2000
SRB-T-9/12/15-20-B		Below (proximal to the balloon)	3	7	9 / 12 / 15	2000
SRB-T-12/15/18-20-B		Below (proximal to the balloon)	3	7	12 / 15 / 18	2000
SRB-T-15/18/21-20-B		Below (proximal to the balloon)	3	7	15 / 18 / 21	2000

Recommended guidewires: MTN-BM 89/45-A (0.035 straight) and 600358-5 (0.035 straight)  
 Packaging unit: 1 piece



# BASKET EXTRACTOR

## REMOVE FOREIGN OBJECTS SAFELY AND EFFECTIVELY

The extraction baskets from Bauer medical are not only suitable for stone extraction in the bile duct, but also for use in the upper and lower intestinal tract for the safe recovery

and removal of foreign bodies such as marbles, batteries or mouth fitting toys. The rotation of the Vario basket ensures safe and reliable recovery of the foreign body.

### SPECIFIC CHARACTERISTICS

- Fixed pre-determined breaking point
- Smooth wire with optimized gliding quality
- Ergonomic grip for improved tactile feeling
- Stone extractor basket with atraumatic tip
- Vario basket



Atraumatic tip gentle to working channel and mucosa



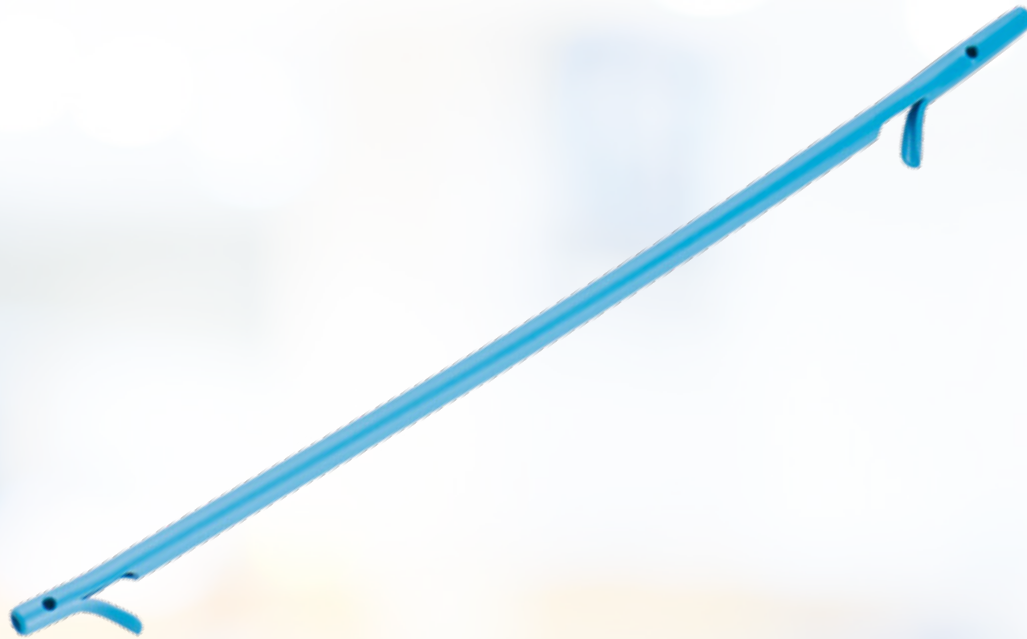
Highly mobile grip for precision insertion and extraction



## SPECIFICATIONS

REF	Form	Features	Ø basket mm
<b>DISPOSABLE BASKETS, PULL ROPE-LENGTH 200 CM</b>			
BK1-B10-25-23-200	Vario	multifilament, 150°-rotation, protection head	15 / 25
BK1-B10-30-23-200	Vario	multifilament, 150°-rotation, protection head	20 / 30
BK1-B20-20-23-200	Hexagonal	multifilament, 4 rope, protection head	20
BK1-B20-25-23-200	Hexagonal	multifilament, 4 rope, protection head	25
BK1-B20-30-23-200	Hexagonal	multifilament, 4 rope, protection head	30
BK1-B20-35-23-200	Hexagonal	multifilament, 4 rope, protection head	35
BK1-B21-35-23-200	Hexagonal	4 rope, half coiled	35
BK1-B22-20-23-200	Hexagonal	4 rope, full coiled	20
BK1-B22-25-23-200	Hexagonal	4 rope, full coiled	25
BK1-B22-30-23-200	Hexagonal	4 rope, full coiled	30
BK1-B22-35-23-200	Hexagonal	4 rope, full coiled	35
<b>DISPOSABLE GUIDE WIRE BASKETS, PULL ROPE-LENGTH 200 CM</b>			
BK1-B90-25-27-200	Combi-hexagonal	multifilament, retractable tip	15 / 25
<b>DISPOSABLE LITHOTRIPSY BASKETS, PULL ROPE-LENGTH 400 CM</b>			
LT1-B10-25-23-400	Vario	multifilament, 150°-rotation, retractable tip	15 / 25
LT1-B10-30-23-400	Vario	multifilament, 150°-rotation, retractable tip	20 / 30
LT1-B20-20-23-400	Hexagonal	multifilament, retractable tip	20
LT1-B20-25-23-400	Hexagonal	multifilament, retractable tip	25
LT1-B20-30-23-400	Hexagonal	multifilament, retractable tip	30
LT1-B20-35-23-400	Hexagonal	multifilament, retractable tip	35

Packaging unit: 5 pieces



# PLASTIC BILE DUCT STENTS

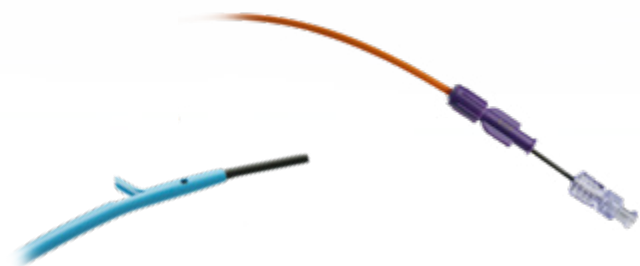
## MAXIMUM DRAINAGE, MAXIMUM HOLD

MICRO-TECH offers a comprehensive range of plastic stents for short and medium-term drainage in the bile duct. The stents are available in different shapes, lengths and diameters. Thus, the ideal stent is available for each indication. The high-quality PE-/PTFE-material of the stents ensures reliable drainage and adapts optimally

to the anatomy of the patient. Flaps at the ends of the stents also ensure a secure hold with minimal migration. For rapid and safe implantation, the stents are available both individually and on pre-loaded systems. In addition, MICRO-TECH also offers introduction-systems in all relevant sizes.

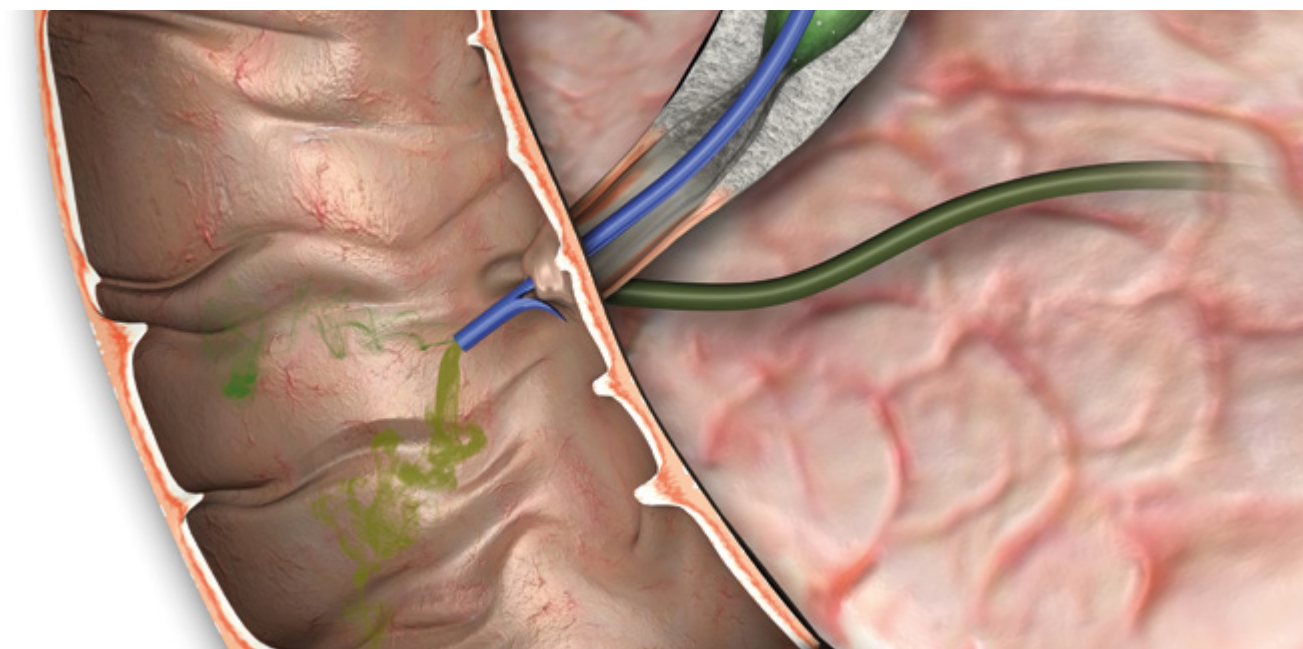
### SPECIFIC CHARACTERISTICS

- Different shapes: straight, curved, angled, pigtail, double-pigtail
- Optimum flow rate
- Ideal adaptation to anatomy
- Safe hold, minimal migration
- Available single-packed or pre-loaded on introduction-system
- High x-ray visibility



Pre-loaded stent

System handle



## SPECIFICATIONS

### STENT STRAIGHT



- Shape: straight
- 2 flaps
- 2 side-holes
- X-ray visible
- Material: PE

Working length	Diameter bile duct prosthesis			
	7FR	8.5FR	10FR	11.5FR
5 cm	BPDS-31114-0705	BPDS-31114-0805	BPDS-31114-1005	BPDS-31114-1105
6 cm	BPDS-31114-0706	BPDS-31114-0806	BPDS-31114-1006	BPDS-31114-1106
7 cm	BPDS-31114-0707	BPDS-31114-0807	BPDS-31114-1007	BPDS-31114-1107
8 cm	BPDS-31114-0708	BPDS-31114-0808	BPDS-31114-1008	BPDS-31114-1108
9 cm	BPDS-31114-0709	BPDS-31114-0809	BPDS-31114-1009	BPDS-31114-1109
10 cm	BPDS-31114-0710	BPDS-31114-0810	BPDS-31114-1010	BPDS-31114-1110
11 cm	BPDS-31114-0711	BPDS-31114-0811	BPDS-31114-1011	BPDS-31114-1111
12 cm	BPDS-31114-0712	BPDS-31114-0812	BPDS-31114-1012	BPDS-31114-1112
13 cm	BPDS-31114-0713	BPDS-31114-0813	BPDS-31114-1013	BPDS-31114-1113
14 cm	BPDS-31114-0714	BPDS-31114-0814	BPDS-31114-1014	BPDS-31114-1114
15 cm	BPDS-31114-0715	BPDS-31114-0815	BPDS-31114-1015	BPDS-31114-1115

## SPECIFICATIONS

### STENT CURVED



- Shape: 15° curved
- 2 flaps
- 2 side-holes
- X-ray visible
- Material: PE

Working length	Diameter bile duct prosthesis			
	7FR	8.5FR	10FR	11.5FR
5 cm	BPDS-32114-0705	BPDS-32114-0805	BPDS-32114-1005	BPDS-32114-1105
6 cm	BPDS-32114-0706	BPDS-32114-0806	BPDS-32114-1006	BPDS-32114-1106
7 cm	BPDS-32114-0707	BPDS-32114-0807	BPDS-32114-1007	BPDS-32114-1107
8 cm	BPDS-32114-0708	BPDS-32114-0808	BPDS-32114-1008	BPDS-32114-1108
9 cm	BPDS-32114-0709	BPDS-32114-0809	BPDS-32114-1009	BPDS-32114-1109
10 cm	BPDS-32114-0710	BPDS-32114-0810	BPDS-32114-1010	BPDS-32114-1110
11 cm	BPDS-32114-0711	BPDS-32114-0811	BPDS-32114-1011	BPDS-32114-1111
12 cm	BPDS-32114-0712	BPDS-32114-0812	BPDS-32114-1012	BPDS-32114-1112
13 cm	BPDS-32114-0713	BPDS-32114-0813	BPDS-32114-1013	BPDS-32114-1113
14 cm	BPDS-32114-0714	BPDS-32114-0814	BPDS-32114-1014	BPDS-32114-1114
15 cm	BPDS-32114-0715	BPDS-32114-0815	BPDS-32114-1015	BPDS-32114-1115

## SPECIFICATIONS

### STENT LATERAL ANGLED



- Form: 45° lateral angled
- 2 flaps
- 2 side-holes
- X-ray visible
- Material: PE

Working length	Diameter bile duct prosthesis			
	7FR	8.5FR	10FR	11.5FR
5 cm	BPDS-33114-0705	BPDS-33114-0805	BPDS-33114-1005	BPDS-33114-1105
6 cm	BPDS-33114-0706	BPDS-33114-0806	BPDS-33114-1006	BPDS-33114-1106
7 cm	BPDS-33114-0707	BPDS-33114-0807	BPDS-33114-1007	BPDS-33114-1107
8 cm	BPDS-33114-0708	BPDS-33114-0808	BPDS-33114-1008	BPDS-33114-1108
9 cm	BPDS-33114-0709	BPDS-33114-0809	BPDS-33114-1009	BPDS-33114-1109
10 cm	BPDS-33114-0710	BPDS-33114-0810	BPDS-33114-1010	BPDS-33114-1110
11 cm	BPDS-33114-0711	BPDS-33114-0811	BPDS-33114-1011	BPDS-33114-1111
12 cm	BPDS-33114-0712	BPDS-33114-0812	BPDS-33114-1012	BPDS-33114-1112
13 cm	BPDS-33114-0713	BPDS-33114-0813	BPDS-33114-1013	BPDS-33114-1113
14 cm	BPDS-33114-0714	BPDS-33114-0814	BPDS-33114-1014	BPDS-33114-1114
15 cm	BPDS-33114-0715	BPDS-33114-0815	BPDS-33114-1015	BPDS-33114-1115

## SPECIFICATIONS

### STENT CENTRAL ANGLED



- Shape: 90° central angled
- 2 flaps
- 2 side-holes
- X-ray visible
- Material: PE

Working length	Diameter bile duct prosthesis			
	7FR	8.5FR	10FR	11.5FR
5 cm	BPDS-34114-0705	BPDS-34114-0805	BPDS-34114-1005	BPDS-34114-1105
6 cm	BPDS-34114-0706	BPDS-34114-0806	BPDS-34114-1006	BPDS-34114-1106
7 cm	BPDS-34114-0707	BPDS-34114-0807	BPDS-34114-1007	BPDS-34114-1107
8 cm	BPDS-34114-0708	BPDS-34114-0808	BPDS-34114-1008	BPDS-34114-1108
9 cm	BPDS-34114-0709	BPDS-34114-0809	BPDS-34114-1009	BPDS-34114-1109
10 cm	BPDS-34114-0710	BPDS-34114-0810	BPDS-34114-1010	BPDS-34114-1110
11 cm	BPDS-34114-0711	BPDS-34114-0811	BPDS-34114-1011	BPDS-34114-1111
12 cm	BPDS-34114-0712	BPDS-34114-0812	BPDS-34114-1012	BPDS-34114-1112
13 cm	BPDS-34114-0713	BPDS-34114-0813	BPDS-34114-1013	BPDS-34114-1113
14 cm	BPDS-34114-0714	BPDS-34114-0814	BPDS-34114-1014	BPDS-34114-1114
15 cm	BPDS-34114-0715	BPDS-34114-0815	BPDS-34114-1015	BPDS-34114-1115

## SPECIFICATIONS

### PIGTAIL DOUBLE O-SHAPE



- Shape: Pigtail O-Shape
- Double
- 4 side-holes
- X-ray visible
- Material: PE

Working length	Diameter bile duct prosthesis		
	7FR	8.5FR	10FR
5 cm	BPDS-31003-0705	BPDS-31003-0805	BPDS-31003-1005
6 cm	BPDS-31003-0706	-	-
7 cm	BPDS-31003-0707	BPDS-31003-0807	BPDS-31003-1007
8 cm	-	BPDS-31003-0808	-
9 cm	BPDS-31003-0709	-	BPDS-31003-1009
10 cm	BPDS-31003-0710	-	BPDS-31003-1010
11 cm	-	BPDS-31003-08011	BPDS-31003-1011
12 cm	BPDS-31003-0712	-	BPDS-31003-1012
15 cm	BPDS-31003-0715	-	-

## SPECIFICATIONS

### PIGTAIL DISTAL



- Shape: Pigtail
- Distal
- 2 side-holes
- X-ray visible
- Material: PE

Working length	Diameter bile duct prosthesis	
	8.5FR	10FR
5 cm	BPDS-31196-0805	BPDS-31196-1005
6 cm	BPDS-31196-0806	BPDS-31196-1006
7 cm	BPDS-31196-0807	BPDS-31196-1007
8 cm	BPDS-31196-0808	BPDS-31196-1008
9 cm	BPDS-31196-0809	BPDS-31196-1009
10 cm	BPDS-31196-0810	BPDS-31196-1010
11 cm	BPDS-31196-0811	BPDS-31196-1011
12 cm	BPDS-31196-0812	BPDS-31196-1012
13 cm	BPDS-31196-0813	BPDS-31196-1013
14 cm	BPDS-31196-0814	BPDS-31196-1014
15 cm	BPDS-31196-0815	BPDS-31196-1015

## SPECIFICATIONS

### PIGTAIL PROXIMAL



- Shape: Pigtail
- Proximal
- 2 side-holes
- X-ray visible
- Material: PE

Working length	Diameter bile duct prosthesis	
	8.5FR	10FR
5 cm	BPDS-31916-0805	BPDS-31916-1005
6 cm	BPDS-31916-0806	BPDS-31916-1006
7 cm	BPDS-31916-0807	BPDS-31916-1007
8 cm	BPDS-31916-0808	BPDS-31916-1008
9 cm	BPDS-31916-0809	BPDS-31916-1009
10 cm	BPDS-31916-0810	BPDS-31916-1010
11 cm	BPDS-31916-0811	BPDS-31916-1011
12 cm	BPDS-31916-0812	BPDS-31916-1012
13 cm	BPDS-31916-0813	BPDS-31916-1013
14 cm	BPDS-31916-0814	BPDS-31916-1014
15 cm	BPDS-31916-0815	BPDS-31916-1015

## INTRODUCER-SYSTEMS WITHOUT STENT

### SPECIFICATIONS

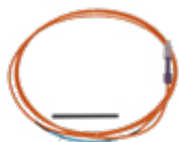


- One step introducer-system
- X-ray visible

New: Extended guide catheter

REF	Ø catheter	Guide catheter	Introducer length
BPDI-0740/22	7 FR	40 cm	220 cm
BPDI-0840/22	8.5 FR	40 cm	220 cm
BPDI-1040/22	10 FR	40 cm	220 cm
BPDI-1140/22	11.5 FR	40 cm	220 cm

## INTRODUCER-SYSTEMS WITH PRE-LOADED STENT



- One step introducer-system
- X-ray visible

### SPECIFICATIONS

#### STENT STRAIGHT



- Shape: straight
- 2 flaps
- 2 side-holes
- X-ray visible
- Material: PE

REF	Ø catheter	Stent working/ total length	Introducer length
BPDS-31114-0805/22	8.5 FR	5 / 7 cm	220 cm
BPDS-31114-0807/22	8.5 FR	7 / 9 cm	220 cm
BPDS-31114-0809/22	8.5 FR	9 / 11 cm	220 cm
BPDS-31114-0811/22	8.5 FR	11 / 13 cm	220 cm
BPDS-31114-1005/22	10 FR	5 / 7 cm	220 cm
BPDS-31114-1007/22	10 FR	7 / 9 cm	220 cm
BPDS-31114-1009/22	10 FR	9 / 11 cm	220 cm
BPDS-31114-1011/22	10 FR	11 / 13 cm	220 cm

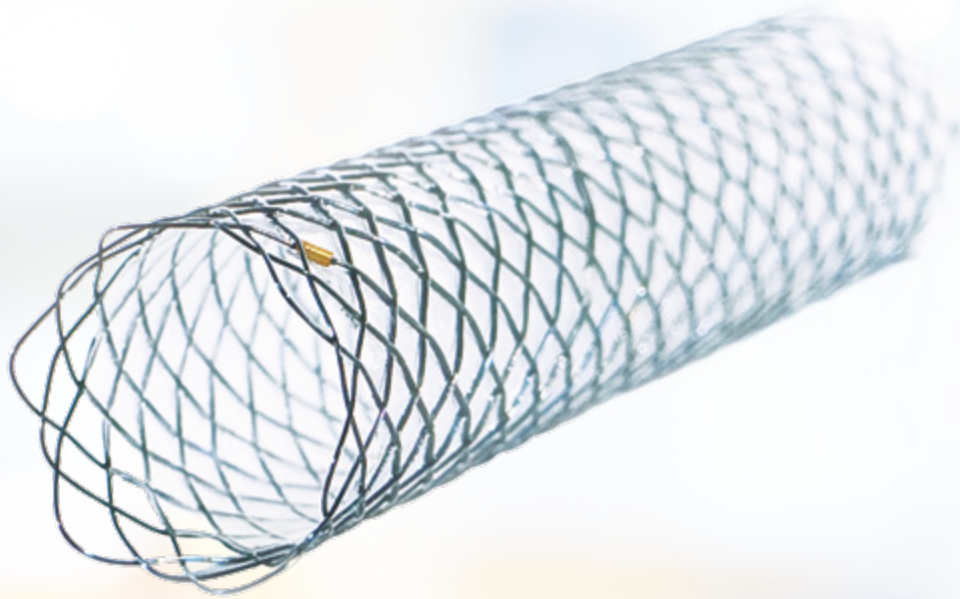
### SPECIFICATIONS

#### STENT CURVED



- Shape: 15° curved
- 2 flaps
- 2 side-holes
- X-ray visible
- Material: PE

REF	Ø catheter	Stent working/ total length	Introducer length
BPDS-32114-0805/22	8.5 FR	5 / 7 cm	220 cm
BPDS-32114-0807/22	8.5 FR	7 / 9 cm	220 cm
BPDS-32114-0809/22	8.5 FR	9 / 11 cm	220 cm
BPDS-32114-0811/22	8.5 FR	11 / 13 cm	220 cm
BPDS-32114-1005/22	10 FR	5 / 7 cm	220 cm
BPDS-32114-1007/22	10 FR	7 / 9 cm	220 cm
BPDS-32114-1009/22	10 FR	9 / 11 cm	220 cm
BPDS-32114-1011/22	10 FR	11 / 13 cm	220 cm



# BILIARY DUCT STENTS

## ALWAYS THE IDEAL SOLUTION

With the biliary stents manufactured by MICRO-TECH you will always make the ideal choice to bridge-graft biliary duct stenoses. The high expansion force of the Nitinol wire mesh accounts for an excellent positional stability. The resistant cover prevents the stent from growing into

the tissue. The product range comprises two stent lines and offers a first-class solution that suits all requirements: the classic line and the platinum line. The comprehensive platinum line is especially distinguished by its extraordinary high radiopacity.

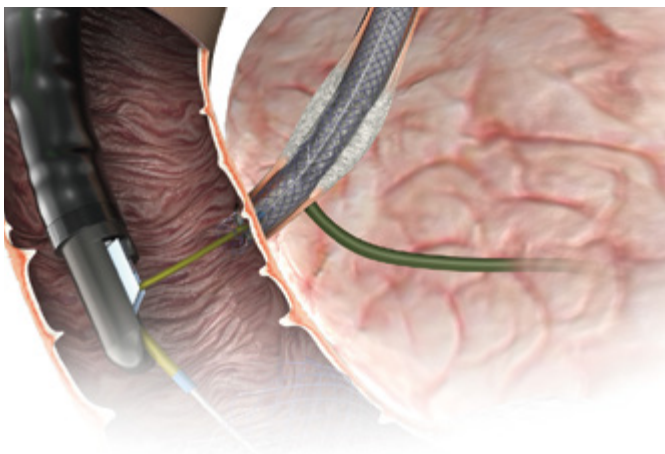
### SPECIFIC CHARACTERISTICS

- Self-expanding
- Available for TTS and PTC
- Classic- and Platinum-Line
- Nitinol wire mesh with atraumatic ends
- Release under visual endoscopic control
- Enormous position stability
- Resistant and elastic cover
- High radiopacity
- Guiding wire passable to a maximum of 0.035 inches



X-ray marking





### CLASSIC-LINE. FIRST-CHOICE FOR ALL APPLICATIONS

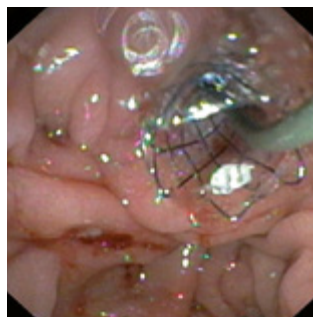
The Classic-Line is perfectly suited for all standard interventions. With two different approaches consisting of TTS and PTCD, it perfectly meets every requirement. These stents are made of highly flexible Nitinol wire mesh. Ten additional radiopaque markers account for the good visibility of our Classic-Line stents under fluoroscopy. Our product range comprises uncovered and partially covered stents.

### PTCD FOR PERCUTANEOUS ACCESS

In case of therapeutic interventions into the biliary duct, it sometimes occurs that a transpapillary access cannot be accomplished. In such cases MICRO-TECH offers PTCD systems (percutaneous transhepatic cholangio drainage) as the ideal solution.

### INTRODUCER SYSTEM FOR AN EXACT RELEASE

Additional radiopaque markers on the distal end of the introducer system and on the tip of the pusher catheter provide for additional orientation. In the endoscopic image, the tip of the pusher catheter can be unambiguously and easily distinguished from the proximal end of the stent. The permanent visual endoscopic control of the stent's proximal end considerably facilitates the exact release of the stent.



Removal of the introducer



Endoscopic positional control



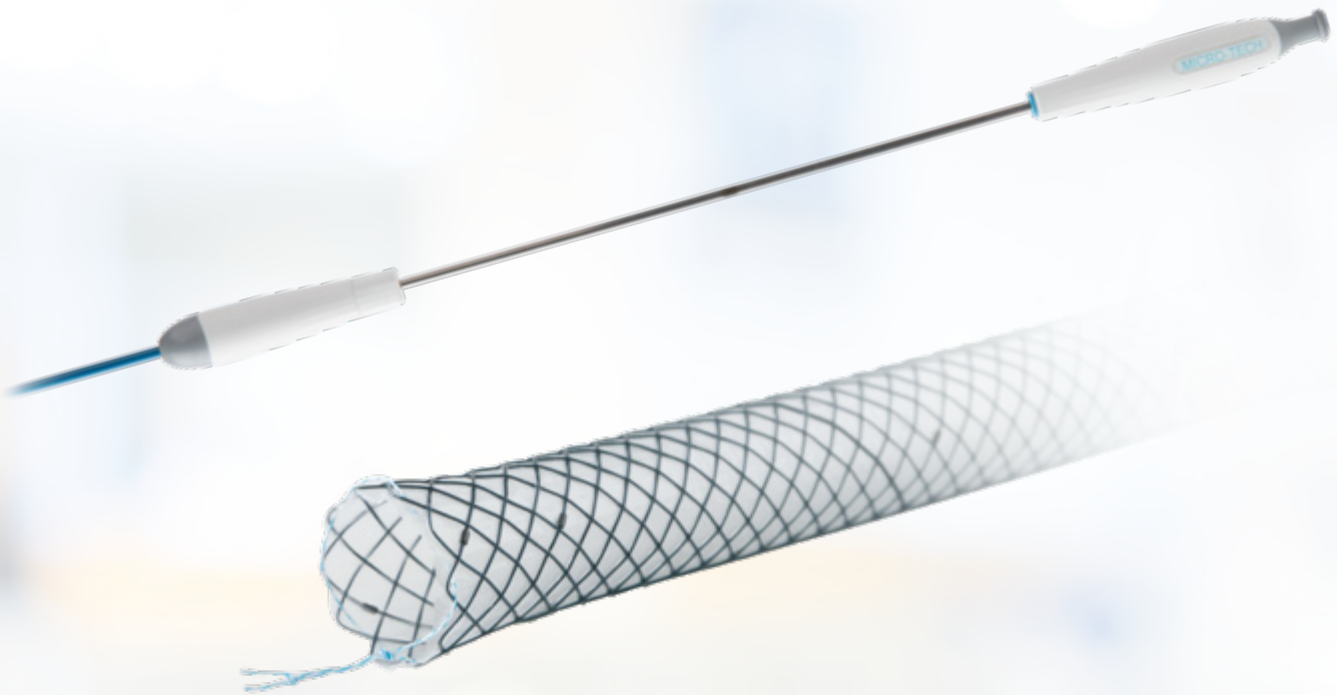
Released stent

### TTS STENTS FOR ROUTINE INTERVENTIONS

We offer uncovered as well as partially covered biliary duct stents in three different lengths. All stents can be placed through the working channel of the duodenoscope over the inserted guide wire (TTS – through-the-scope).

### TEN PLATINUM RADIOPAQUE MARKERS

In order to achieve improved visibility under X-ray control each stent bears a total of ten radiopaque markers: four markers located at each end, and two in the middle of the stent. The two radiopaque markers in the middle guarantee for the controllability of the stent's optimal position during deployment.



# BILIARY-STENT (GEN-II)

## HIGH PRECISION IN SLIM DESIGN

The next generation of MICRO-TECH's biliary stents takes the bridging of bile-duct stenosis to a new level. Thanks to its slim design, the system can be pushed almost frictionless through the endoscope and released easily in the bile-duct. A high flexible, specially developed Nitinol wire and the tantalum markers ensure optimal placement under

X-ray vision. The range of stents are available in lengths from 40 to 100 mm as well as fully, partially and uncovered stents. Uncovered and partially covered variants are produced with a "point-of-no-return" that allows to re-insert the stent into the sheath again and make the repositioning much easier.

### SPECIFIC CHARACTERISTICS

- Slimmer introducer set
- Point-of-no-return for uncovered and partially covered stents
- Stent system does not need to be flushed before application
- Stent with tantalum marker for good visibility under X-ray



Tantalum X-ray markings



Partly expanded

## SPECIFICATIONS

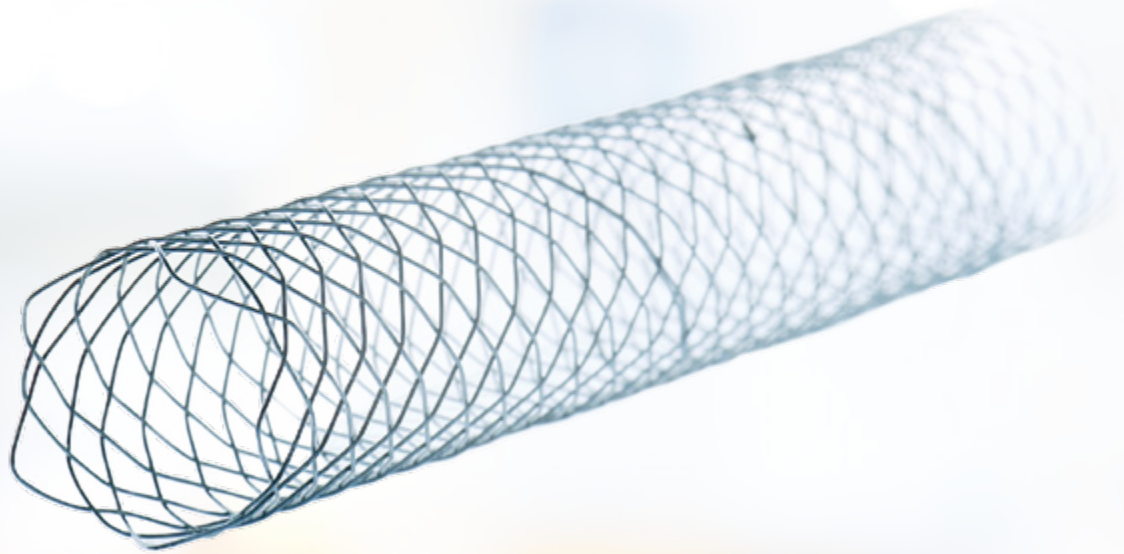
REF	Ø mm	Length mm	Working channel mm	Covering	
<b>STENTS STRAIGHT</b>					
NST03-001-10.040	10	40	3.7	Without	
NST03-001-10.060	10	60	3.7	Without	
NST03-001-10.080	10	80	3.7	Without	
NST03-001-10.100	10	100	3.7	Without	
NST03-002-10.040	10	40	3.7	Partial	
NST03-002-10.060	10	60	3.7	Partial	
NST03-002-10.080	10	80	3.7	Partial	
NST03-002-10.100	10	100	3.7	Partial	
NST03-004-10.040	10	40	3.7	Complete	
NST03-004-10.060	10	60	3.7	Complete	
NST03-004-10.080	10	80	3.7	Complete	
NST03-004-10.100	10	100	3.7	Complete	
<b>STENTS WITH EXTENDED TULIPS</b>					
NST03-111-10.040	10/13	40	3.7	Without	
NST03-111-10.060	10/13	60	3.7	Without	
NST03-111-10.080	10/13	80	3.7	Without	
NST03-111-10.100	10/13	100	3.7	Without	
NST03-112-10.040	10/13	40	3.7	Partial	
NST03-112-10.060	10/13	60	3.7	Partial	
NST03-112-10.080	10/13	80	3.7	Partial	
NST03-112-10.100	10/13	100	3.7	Partial	
NST03-114-10.040	10/13	40	3.7	Complete	
NST03-114-10.060	10/13	60	3.7	Complete	
NST03-114-10.080	10/13	80	3.7	Complete	
NST03-114-10.100	10/13	100	3.7	Complete	
	Ø mm/fr.	Length mm	Guide wire	RM <sup>*1</sup>	Lock <sup>*2</sup>
<b>INTRODUCER SYSTEM</b>					
	2.5/7.5, 2.8/8.5	1800	0.035 inch	2	Yes

\*1 RM – radiopaque markings / \*2 Lock – secures the introducer system during transport, storage and insertion

Recommended guidewires:

Straight: MTN-BM-89/45-A, MTN-BM-63/45-A, MTN-BM-53/45-A, MTN-BM-45/45-A.

J-tip: MTN-BM-89/45-A-J, MTN-BM-63/45-A-J.



# PLATINUM-LINE

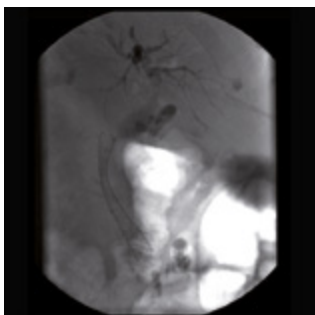
## PERFECT VISIBILITY FOR HIGHEST PRECISION

With its Platinum-Line, MICRO-TECH heralds a new generation of biliary duct stents. Under X-ray control, they are more visible than ever before, making their release even safer and precise. The secret of their extremely good visi-

bility lies in the specially developed Nitinol wire. Now with enhanced radiopacity, these platinum stents virtually glow in X-ray images. This accounts for extremely good visibility of the stent over its entire length under fluoroscopy.

### UNCHALLENGED: VISIBILITY UNDER X-RAY CONTROL

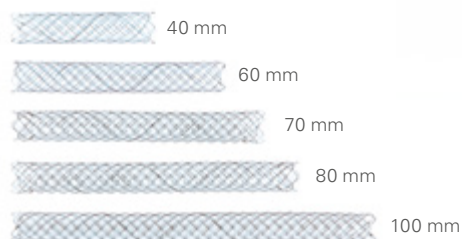
Apart from the innovative Nitinol wire, each stent of the Platinum-Line is distinguished by two additional radiopaque markers which are located in the middle of the stent. This enables pinpointing the exact position of the stent's center line while the stent is being released. Additional radiopaque markers on the introducer system also facilitate orientation.



Released Platinum-Line stent

### THE RIGHT CHOICE, WHETHER SHORT OR LONG

The biliary stents from MICRO-TECH are 10 mm wide throughout and differ in length according to the indication: a choice of five lengths is available, namely 40. 60. 70. 80 and 100 mm.



## SPECIFICATIONS

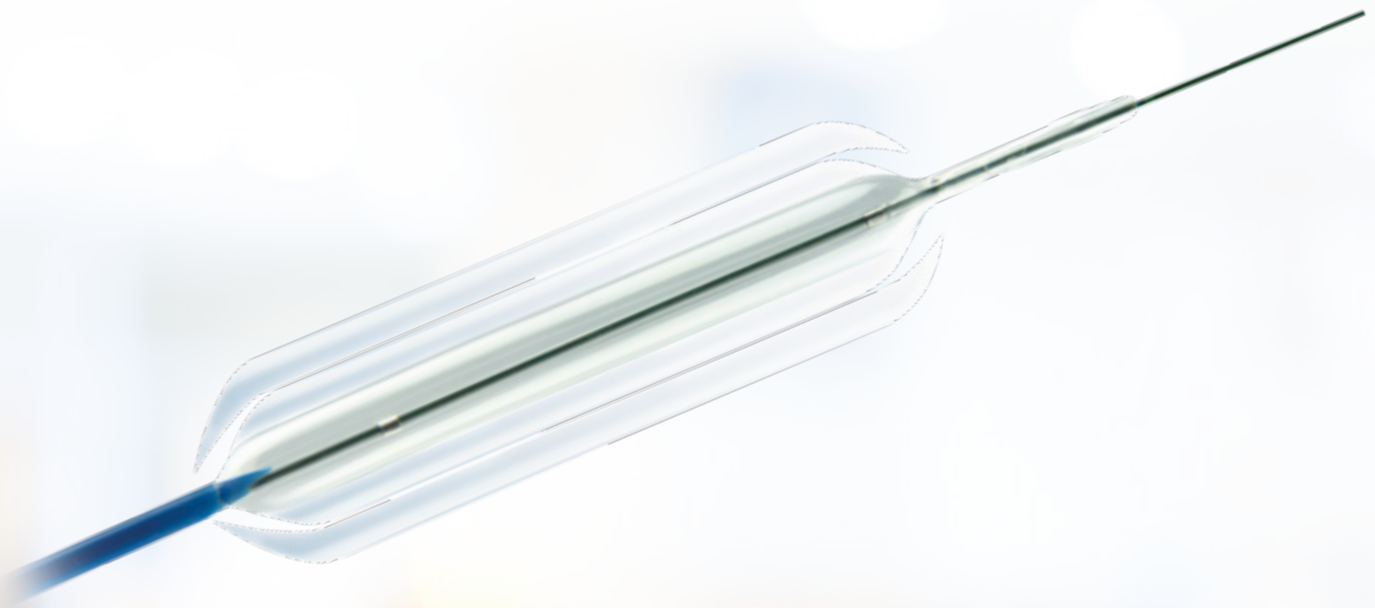
REF	Ø centre mm	Ø end mm	Length mm	Covering mm
<b>CLASSIC-LINE TTS</b>				
ST03-101.10.040	10	10	40	Without
ST03-101.10.060	10	10	60	Without
ST03-101.10.080	10	10	80	Without
ST03-101.10.100	10	10	100	Without
ST03-102.10.060	10	10	60	50
ST03-102.10.080	10	10	80	70
ST03-102.10.100	10	10	100	90
<b>CLASSIC-LINE PTCD</b>				
ST03-111.10.060	10	10	60	Without
ST03-111.10.080	10	10	80	Without
ST03-112.10.060	10	10	60	50
ST03-112.10.080	10	10	80	70
<b>PLATINUM-LINE TTS</b>				
ST03-104.10.040	10	10	40	Without
ST03-104.10.060	10	10	60	Without
ST03-104.10.080	10	10	80	Without
ST03-104.10.100	10	10	100	Without
ST03-105.10.040	10	10	40	30
ST03-105.10.060	10	10	60	50
ST03-105.10.080	10	10	80	70
ST03-105.10.100	10	10	100	90
ST03-106.10.040	10	10	40	40
ST03-106.10.060	10	10	60	60
ST03-106.10.080	10	10	80	80
<b>PLATINUM-LINE TTS, EXTENDED ENDS, EXTRACTION THREADS PRE-PAPILLARY</b>				
ST03-126.10.040	10	10	40	30
ST03-126.10.060	10	10	60	50
ST03-126.10.080	10	10	80	70
ST03-127.10.040	10	10	40	40
ST03-127.10.060	10	10	60	60
ST03-127.10.070	10	10	70	70
ST03-127.10.080	10	10	80	80

	Ø mm/fr.	Length mm	Guide wire	RM <sup>*1</sup>	IC <sup>*2</sup>	Lock <sup>*3</sup>
<b>INTRODUCER SYSTEM</b>						
ST03-101... (TTS)	2.7/8	1800	0.035 inch	2	Yes	Yes
ST03-102 + 103... (TTS)	3.0/9	1800	0.035 inch	2	Yes	Yes
ST03-111... (PTCD)	2.7/8	500	0.035 inch	2	Yes	Yes
ST03-112... (PTCD)	2.8/8.5	500	0.035 inch	2	Yes	Yes
ST03-126... (TTS)	3.0/9	1800	0.035 inch	2	Yes	Yes
ST03-127... (TTS)	3.3/10	1800	0.035 inch	2	Yes	Yes

Recommended guide wire (TTS): 600360-5 Alternative: 600358-5 with a longer tip

Recommended guide wire (Perkutan): 600371-5

\*1 RM – radiopaque markings / \*2 IC – irrigation channel / \*3 Lock – secures the introducer system during storage, transportation and introduction



# MULTI-STAGE DILATION BALLOONS

## THREE DIAMETERS, ONE BALLOON

The multi-stage dilation balloon from MICRO-TECH facilitates simple and reliable dilation of stenoses. Each balloon can be expanded to three different, fixed diameters for progressive dilation of stenosis in three pre-defined stages. The pressure is distributed evenly over the entire working length of the balloon at every diameter. The

rounded tips enable a good endoscopic view of the stenosis, even during dilation, ensuring controlled, safe intervention and good therapeutic success. Thanks to the preloaded stiffed wire with its flexible, hydrophilic, radiopaque tip, the balloons are readily introduced and are then rapidly deflated after successful dilation.

### SPECIFIC CHARACTERISTICS

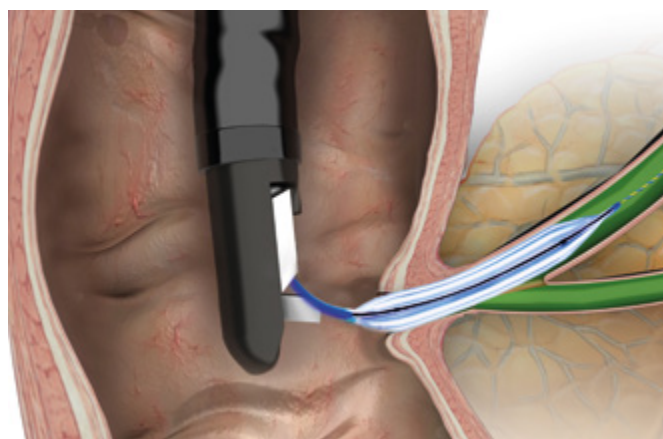
- Three different diameters with three separate pressure levels
- 2 X-ray markers on opposite ends to indicate the exact working length of the balloon
- Rounded Balloon shoulders for clear endoscopic view of the balloon's distal end
- Conical, atraumatic catheter tip
- Preloaded stiffed wire with hydrophilic, radiopaque tip



Separate openings for stiffed wire and insufflation

## SINGLE-USE INFLATION-INSTRUMENT

Sturdy construction and an ergonomic handle for easy control. With quick-lock mechanism for one-handed deflation, even under full pressure. The clear cylinder and the easy to read scale allow for a close look at the content and the amount. The exact gauge guarantees reliable pressure measurement.



## SPECIFICATIONS

REF	Content ml air/liquid	Max. pressure ATM	Feature		
<b>SINGLE-USE INFLATION-INSTRUMENT</b>					
BID-15-60-01	60	15	3-way-stopcock		
REF	Balloon Ø mm	Balloon 3-stagedilation pressure (atm)	Balloon length mm	Catheter Ø fr.	Catheter length mm
<b>MULTI-STAGE DILATION BALLOONS</b>					
MBD-AS-BB-2	6 / 7 / 8	3 / 6 / 10	30	7	2300
MBD-AM-BA-2	6 / 7 / 8	3 / 6 / 10	55	7	1800
MBD-AM-BB-2	6 / 7 / 8	3 / 6 / 10	55	7	2300
MBD-AL-BA-2	6 / 7 / 8	3 / 6 / 10	80	7	1800
MBD-BS-BB-2	8 / 9 / 10	3 / 5.5 / 9	30	7	2300
MBD-BM-BA-2	8 / 9 / 10	3 / 5.5 / 9	55	7	1800
MBD-BM-BB-2	8 / 9 / 10	3 / 5.5 / 9	55	7	2300
MBD-BL-BA-2	8 / 9 / 10	3 / 5.5 / 9	80	7	1800
MBD-CS-BB-2	10 / 11 / 12	3 / 5 / 8	30	7	2300
MBD-CM-BA-2	10 / 11 / 12	3 / 5 / 8	55	7	1800
MBD-CM-BB-2	10 / 11 / 12	3 / 5 / 8	55	7	2300
MBD-CL-BA-2	10 / 11 / 12	3 / 5 / 8	80	7	1800
MBD-DS-BB-2	12 / 13.5 / 15	3 / 4.5 / 8	30	7	2300
MBD-DM-BA-2	12 / 13.5 / 15	3 / 4.5 / 8	55	7	1800
MBD-DM-BB-2	12 / 13.5 / 15	3 / 4.5 / 8	55	7	2300
MBD-DL-BA-2	12 / 13.5 / 15	3 / 4.5 / 8	80	7	1800
MBD-EM-BA-2	15 / 16.5 / 18	3 / 4.5 / 7	55	7	1800
MBD-EM-BB-2	15 / 16.5 / 18	3 / 4.5 / 7	55	7	2300
MBD-EL-BA-2	15 / 16.5 / 18	3 / 4.5 / 7	80	7	1800
MBD-FM-BA-2	18 / 19 / 20	3 / 4.5 / 6	55	7	1800
MBD-FM-BB-2	18 / 19 / 20	3 / 4.5 / 6	55	7	2300
MBD-FL-BA-2	18 / 19 / 20	3 / 4.5 / 6	80	7	1800

Packaging unit: 1 piece / suitable for guide wires with 0.035"



# DILATION BALLOONS

## SIMPLY EXPAND RELIABLY AND EFFECTIVELY

The dilation balloons from MICRO-TECH stand for maximum quality. MICRO-TECH produces all the dilation balloons itself – using state-of-the-art European and American production technology. Two x-ray markings indicate the exact working length of the balloon, thereby ensuring its precise positioning. Under application of pressure, the

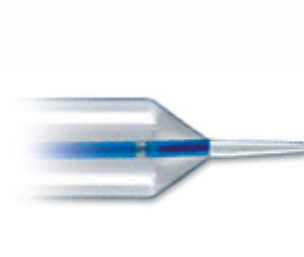
balloon is rapidly filled to acquire its predefined expansion width. Furthermore, the high-pressure design ensures the balloon retains its shape over the entire working length, thereby allowing optimum dilation success. All balloons are available as TTS (through-the-scope) systems up to a diameter of 18 mm and a catheter length of 1800 mm.

### SPECIFIC CHARACTERISTICS

- Dimensionally stable high pressure design
- 2 X-ray markers on opposite ends to indicate the exact working length of the balloon
- Separate guide wire and insufflation lumens
- Conical shaped catheter tip
- Rapid expansion
- Constant dilation over the entire length
- Guide-wire compatible up to 0.035 inches



X-ray marking

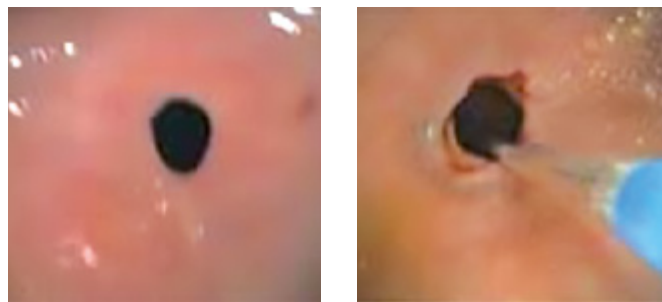


Conical tip



## SUCCESSFUL IN PRACTICAL USE

Stenoses are effectively dilated using the MICRO-TECH dilation balloons. The balloon dilates the stenosis safely and gently and prepares the area to be treated in an optimum manner. The uniform distribution of pressure over the entire working length of the balloon and the outstanding dimensional stability during dilation guarantee excellent therapeutic success over the entire length of the stenosis.

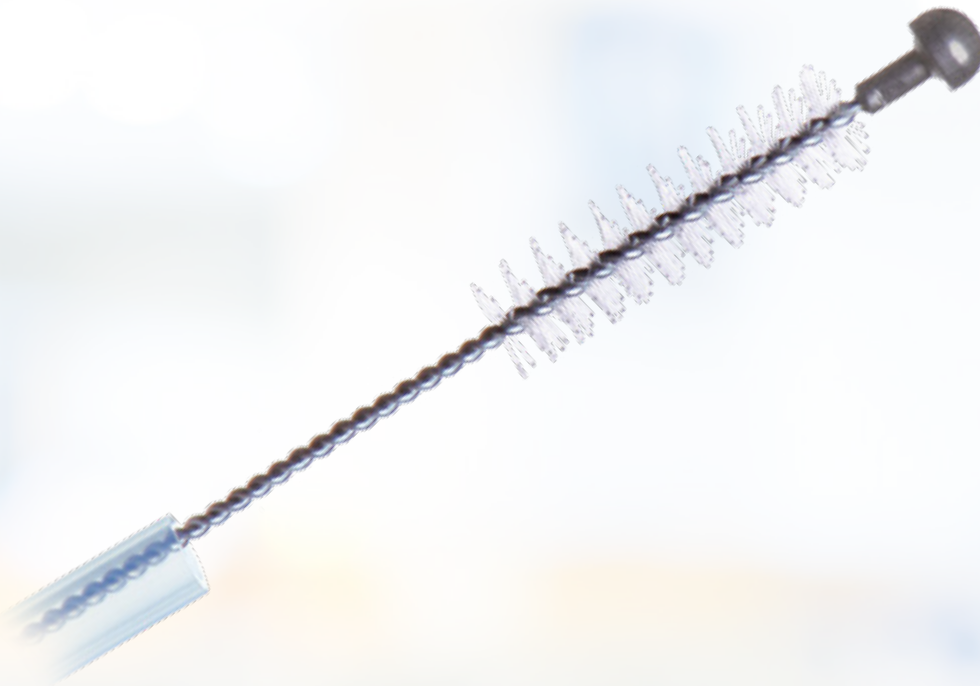


Endoscopic control during dilation therapy

## SPECIFICATIONS

REF	Balloon Ø mm	Balloon length mm	Catheter Ø fr.	Catheter length mm	Channel Ø mm	Application
<b>TTS – DILATION BALLOONS</b>						
BDC-8/55-7/18	8	55	7	1800	2.8	Oesophagus/Bile duct
BDC-8/55-7/24	8	55	7	2400	2.8	Pylorus/Colon
BDC-10/55-7/18	10	55	7	1800	2.8	Oesophagus/Bile duct
BDC-10/55-7/24	10	55	7	2400	2.8	Pylorus/Colon
BDC-12/55-7/18	12	55	7	1800	2.8	Oesophagus
BDC-12/55-7/24	12	55	7	2400	2.8	Pylorus/Colon
BDC-16/55-7/18	16	55	7	1800	2.8	Oesophagus
BDC-16/55-7/24	16	55	7	2400	2.8	Pylorus/Colon
BDC-18/55-7/18	18	55	7	1800	2.8	Oesophagus
BDC-18/55-7/24	18	55	7	2400	2.8	Pylorus/Colon
BDC-20/55-7/18	20	55	7	1800	4.2	Oesophagus
BDC-20/55-7/24	20	55	7	2400	4.2	Pylorus/Colon
BDC-12/80-7/18	12	80	7	1800	2.8	Oesophagus
BDC-12/80-7/24	12	80	7	2400	2.8	Pylorus/Colon
BDC-16/80-7/18	16	80	7	1800	2.8	Oesophagus
BDC-16/80-7/24	16	80	7	2400	2.8	Pylorus/Colon
BDC-18/80-7/18	18	80	7	1800	2.8	Oesophagus
BDC-18/80-7/24	18	80	7	2400	2.8	Pylorus/Colon
BDC-20/80-7/18	20	80	7	1800	4.2	Oesophagus
BDC-20/80-7/24	20	80	7	2400	4.2	Pylorus/Colon
<b>ACHALASIE-BALLOONS</b>						
BDC-26/80-7/10	26	80	7	1000	–	Achalasie
BDC-30/80-7/10	30	80	7	1000	–	Achalasie
BDC-34/80-7/10	34	80	7	1000	–	Achalasie
<b>FIXED WIRE BALLOONS</b>						
FWB-06/80-6/18-M	6-7-8	80	6	1800	2.8	Oesophagus
FWB-08/80-6/18-M	8-9-10	80	6	1800	2.8	Oesophagus
FWB-10/80-6/18-M	10-11-12	80	6	1800	2.8	Oesophagus
FWB-12/80-6/18-M	12-13.5-15	80	6	1800	2.8	Oesophagus
FWB-15/80-6/18-M	15-16.5-18	80	6	1800	2.8	Oesophagus
FWB-18/80-6/18-M	18-19-20	80	6	1800	2.8	Oesophagus

Packaging unit: 1 piece / suitable for guide wires with 0.035"



# CYTOLOGY BRUSHES

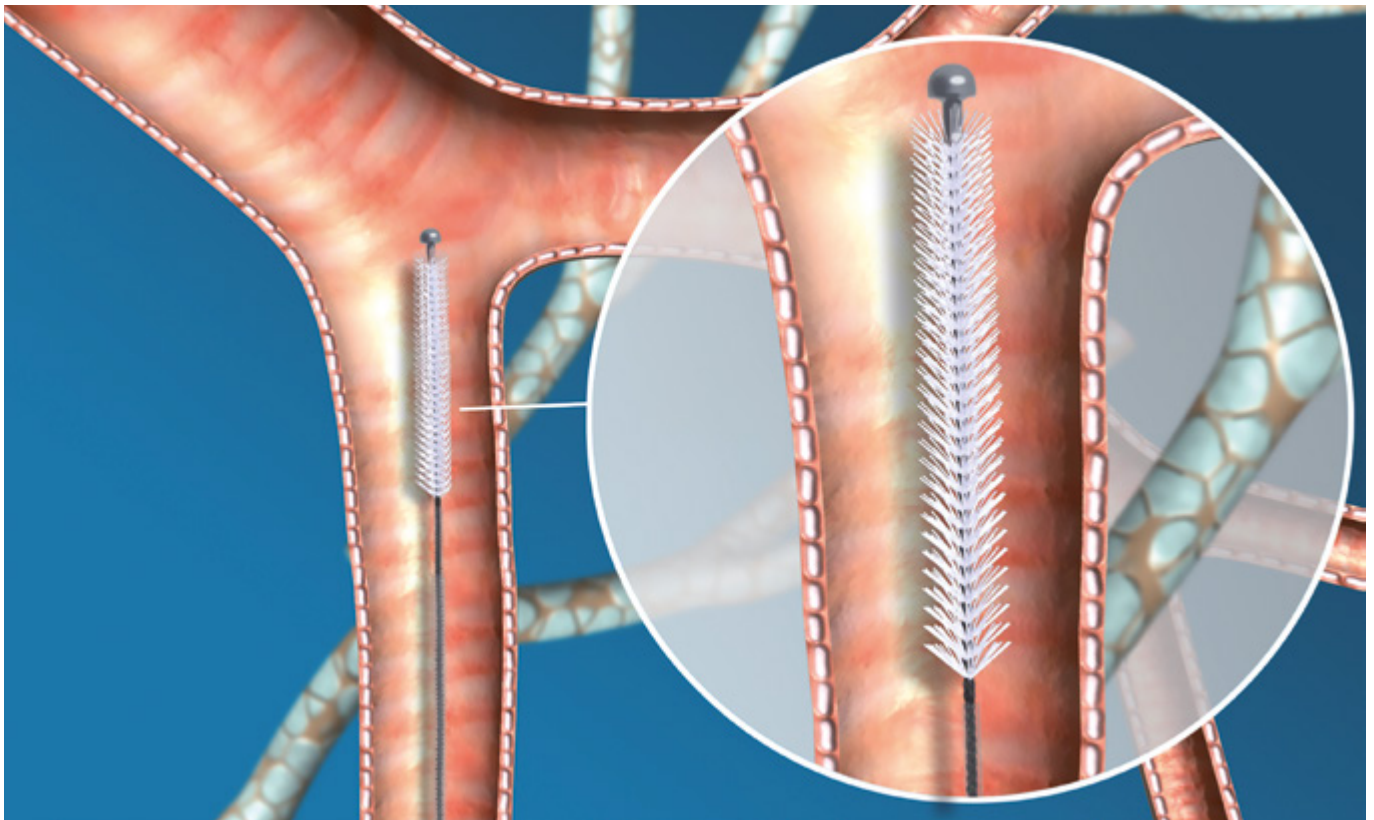
## THE SOLUTION FOR EASY AND SAFE CYTOLOGIC SMEARS

One established method of acquiring cell specimens consists of taking cytologic smears with cytology brushes: MICRO-TECH makes cytologic smearing efficient and safe, owing to a series of cytology brushes which are especially adapted to clinical requirements. The MICRO-TECH cytology brush can be push forward

easily to the desired site through the endoscope. The thin bristles enable a tissue-sparing cytologic smear. The plastic tube and the distal ball for closure protect the tissue sample when the device is retracted. A potential contamination of the sample or even a loss of sample is thus excluded.

### SPECIFIC CHARACTERISTICS

- Thin bristles for an optimal collection of cells
- Includes a plastic tube and a metal “ball shaped” head for tight closure
- For endoscopes with a minimum working channel diameter of 2.0 mm
- Sterile single packaging



### SAFE AND CONTROLLED INTRODUCTION

By using MICRO-TECH cytology brushes, you can access lesions that are hard to reach, easily and safely. The ergonomically shaped 3-ring handle also gives the user a secure and comfortable grip. Every movement is conveyed to the brush head, directly and with precision.



Ergonomically handle

### COMPREHENSIVE RANGE OF PRODUCTS

MICRO-TECH offers a great variety of cytology brush models which are suited for many application fields and comply with clinical specifications.

## SPECIFICATIONS

REF	Brush Ø mm	Length mm	Catheter Ø mm
<b>SINGLE-USE CYTOLOGY BRUSH</b>			
CYB-30S-24C	3.0	2400	2.3
CYB-40S-24C	4.0	2400	2.3

Packaging unit: 20 pieces



# NETS

## SAFELY REMOVE FOREIGN BODIES AND POLYPS

The MT net has been developed for the removal of polyps and foreign bodies and enables the reliable recovery of tissue samples. The net itself consists of a reinforced thread

material, which offers additional safety during recovery. Thanks to its unique dimensional stability and large opening, it facilitates work over several passes.

### SPECIFIC CHARACTERISTICS

- Large net
- High quality manufacture
- Comfortable 3-ring handle
- Easy and precise opening



Shape stable MT net

## SPECIFICATIONS

REF	Ø net mm	Snare	Working length mm	Ø working channel mm
<b>RETRIEVAL NET</b>				
NT-E-30/23-P	30	Oval	2300	2.8
NT-E-30/16-P	30	Oval	1600	2.8

Packaging unit: 10 pieces



# FOREIGN BODY FORCEPS

## QUALITY CRAFTED FOR HIGH PRECISION CONTROL

Due to the ergonomic 3-ring handle the one-time foreign body forceps can be used with ease and comfort. Each movement is passed exactly to the forceps – even in angled body regions. The calipers themselves are made

of high quality material and are perfectly manufactured. These qualities allow you to grab firmly, guaranteeing safe foreign body retrievals. The range includes forceps for gastroenterology, pneumology, paediatrics and urology.

### SPECIFIC CHARACTERISTICS

- High-quality processing
- Covering with markings
- Ergonomic 3-ring handle
- Easy and safe operation
- Different areas of application
- 3 types: Alligator, 2-1 teeth and Griffin
- Sterile and individually wrapped
- Type Griffin also for stent-extraction and -repositioning



Type Griffin: long alligator jaw with 2:1 teeth



Type: 2-1 teeth

## SPECIFICATIONS

REF	Type	Length mm	Ø mm
<b>DISPOSABLE FOREIGN BODY FORCEPS - GASTROENTEROLOGY</b>			
NGF03-11023230	2-1 teeth	2300	2.3
NGF13-11023230	Alligator	2300	2.3
NGF33-11023230	Griffin	2300	2.3
<b>DISPOSABLE FOREIGN BODY FORCEPS - PNEUMOLOGY, PAEDIATRICS, UROLOGY</b>			
NGF32-11018180	Griffin	1800	1.8
NGF32-11018120	Griffin	1200	1.8

Packaging unit: 10 pieces

Type Griffin is ideal and our recommendation for stent-extraction and -repositioning.



# DISPOSABLE BIOPSY FORCEPS

## WHERE TECHNOLOGY AND RELIABILITY MEET

The biopsy forceps are extraordinarily sharp, which guarantees safe and effortless removal of significant tissue specimens. The CamDesign of our TechBite™ requires only very gentle contact pressure for a very good biopsy. The shortened distal end goes easy on the working

channel, even in angled positions. This is always guaranteed by the fully-mechanized production system used to manufacture TechBite™. With its classic shear joints, the TruBite combines easy handling with reliable quality.

### SPECIFIC CHARACTERISTICS

- Significant biopsies
- A design that goes easy on the working channel
- Short distal end: 9 mm (TechBite™), 11.5 mm (TruBite)
- Wide product range



Cam-Design (Fig. TechBite™)

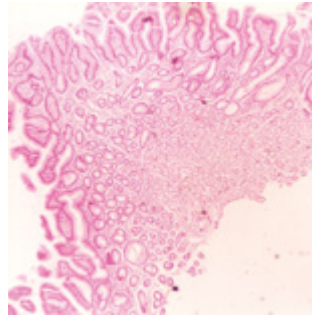


Scissors joint (Fig. TruBite)

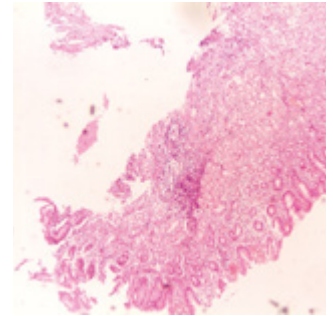


### CONVINCING IN PRACTICAL USE

All of our forceps are equipped with a polyethylene coating. The labels can be consulted at any time for information regarding the withdrawal of the biopsy forceps.



Biopsate removed with a toothed cutting edge



Biopsate removed with a smooth cutting edge



### HANDLE AVAILABLE AS 1-RING VERSION

All forceps are equipped with the 1-ring handle. This allows you to use a one-hand grip method.

### JAW SECTIONS FOR EVERY INTERVENTION

Whether for biopsies or for removal of small polyps – the disposable biopsy forceps are perfectly equipped for any task with different jaw sections: with a smooth or a toothed cutting edge, with or without a spike.



### HIGH QUALITY COATING

The coating protects the working channel against scratching and provides a frictionless feed motion. The colored marking shows the removal of the forceps from the working channel in order to prevent damage to the mucous membrane. The forceps have been given different colors so they can be quickly allocated in accordance with working length:

Blue: 2300 mm or 2600 mm

Orange: 1800 mm

Yellow: Pediatric 1800 mm or 2600 mm

## SELECTION OF MORE THAN 30 BIOPSY FORCEPS

The broad range includes forceps of various sizes, and with differing features. An extract from the portfolio can be found below, while page 35 offers a complete overview.

### TECHBITE™



Jaw Ø 2.3 mm,  
180 cm length



Jaw Ø 2.3 mm,  
230 cm length

### TRUBITE



Jaw Ø 2.3 mm,  
180 cm length



Jaw Ø 2.3 mm,  
230 cm length

## SPECIAL FORCEPS

### TECHBITE™ PAEDIATRICS



Jaw Ø 1.8 mm,  
180 cm length

### MACRO



Jaw Ø 3.0 mm,  
230 cm length

### TRUBITE PAEDIATRICS



Jaw Ø 1.8 mm,  
180 cm length

### LARGE CAPACITY



Jaw Ø 2.4 mm,  
180 cm length



Jaw Ø 2.4 mm,  
180 cm length

## SPECIFICATIONS

REF	Working channel Ø mm	Length mm	Opening width mm	Jaw Ø mm	Spike	Covering	Jaw	Grip
<b>TECHBITE™</b>								
EBF33-11023180	2.8	1800	6.7	2.3	No	Orange	Smooth	1-ring
EBF33-11023230	2.8	2300	6.7	2.3	No	Blue	Smooth	1-ring
EBF33-11123180	2.8	1800	6.7	2.3	Yes	Orange	Smooth	1-ring
EBF33-11123230	2.8	2300	6.7	2.3	Yes	Blue	Smooth	1-ring
EBF43-11023180	2.8	1800	6.7	2.3	No	Orange	Serrated	1-ring
EBF43-11023230	2.8	2300	6.7	2.3	No	Blue	Serrated	1-ring
EBF43-11123180	2.8	1800	6.7	2.3	Yes	Orange	Serrated	1-ring
EBF43-11123230	2.8	2300	6.7	2.3	Yes	Blue	Serrated	1-ring
<b>TRUBITE</b>								
EBF53-11023180	2.8	1800	6.7	2.3	No	Orange	Smooth	1-ring
EBF53-11023230	2.8	2300	6.7	2.3	No	Blue	Smooth	1-ring
EBF53-11123180	2.8	1800	6.7	2.3	Yes	Orange	Smooth	1-ring
EBF53-11123230	2.8	2300	6.7	2.3	Yes	Blue	Smooth	1-ring
EBF63-11023180	2.8	1800	6.7	2.3	No	Orange	Serrated	1-ring
EBF63-11023230	2.8	2300	6.7	2.3	No	Blue	Serrated	1-ring
EBF63-11123180	2.8	1800	6.7	2.3	Yes	Orange	Serrated	1-ring
EBF63-11123230	2.8	2300	6.7	2.3	Yes	Blue	Serrated	1-ring
<b>SPECIAL FORCEPS</b>								
<b>TECHBITE™ – PAEDIATRICS</b>								
EBF33-11018180	2.0	1800	4.5	1.8	No	Yellow	Smooth	1-ring
EBF43-11018180	2.0	1800	4.5	1.8	No	Yellow	Serrated	1-ring
EBF43-11118180	2.0	1800	4.5	1.8	Yes	Yellow	Serrated	1-ring
<b>TRUBITE – PAEDIATRICS</b>								
EBF53-11018180	2.0	1800	4.5	1.8	No	Yellow	Smooth	1-ring
EBF53-11118180	2.0	1800	4.5	1.8	Yes	Yellow	Smooth	1-ring
EBF13-11018180	2.0	1800	4.5	1.8	No	Yellow	Serrated	1-ring
EBF13-11118180	2.0	1800	4.5	1.8	Yes	Yellow	Serrated	1-ring
<b>TRUBITE – ENTEROSCOPY</b>								
EBF03-11018260	2.0	2600	4.5	1.8	No	Yellow	Smooth	1-ring
EBF03-11023260	2.8	2600	6.7	2.3	No	Blue	Smooth	1-ring
<b>TRUBITE – MACRO</b>								
EBF03-01030230	3.2	2300	8.5	3.0	No	Blue	Smooth	1-ring
EBF03-01130230	3.2	2300	8.5	3.0	Yes	Blue	Smooth	1-ring
EBF13-01030230	3.2	2300	8.5	3.0	No	Blue	Serrated	1-ring
EBF13-01130230	3.2	2300	8.5	3.0	Yes	Blue	Serrated	1-ring
<b>LARGE CAPACITY</b>								
LCEBF63-10024180	2.8	1800	9.0	2.4	No	Orange	Serrated	1-ring
LCEBF63-10024230	2.8	2300	9.0	2.4	No	Blue	Serrated	1-ring
LCEBF63-10124180	2.8	1800	9.0	2.4	Yes	Orange	Serrated	1-ring
LCEBF63-10124230	2.8	2300	9.0	2.4	Yes	Blue	Serrated	1-ring

Packaging unit: 10 pieces

