

Ordering Information

Composite Guide Wires

Product	Catalog No.	Diameter (mm (inch))	Usable Length (cm)	Radiopaque Length (cm)	Spring Coil Length (cm)	Tip Shape
ASAHI SION blue	AHW14R004S	0.36 (0.014)	180	3	20	Straight
	AHW14R304S		300			Straight
	AHW14R004J		180			J
	AHW14R304J		300			J
ASAHI SION	AHW14R001S	0.36 (0.014)	180	3	28	Straight
	AHW14R301S		300			Straight
	AHW14R001J		180			J
	AHW14R301J		300			J
ASAHI SION black	APW14R010S	0.36 (0.014)	190	3	12	Straight
	APW14R310S		300			Straight
	APW14R010J		190			J
	APW14R310J		300			J
ASAHI SION blue ES	AHW14R017S	0.36 (0.014)	190	3	8.5	Straight
	AHW14R317S		300			Straight
	AHW14R017J		190			J
	AHW14R317J		300			J
Fielder XT-A	APW14R009S	0.26 / 0.36 (0.010 / 0.014)	190	16	16	Straight
Fielder XT-R	APW14R309S	0.26 / 0.36 (0.010 / 0.014)	300	16	16	Straight
ASAHI Gaia First	APW14R005S	0.26 / 0.36 (0.010 / 0.014)	190	15	15	Straight
	APW14R305S		300			Straight
ASAHI Gaia Second	AHW14R007P	0.28 / 0.36 (0.011 / 0.014)	190	15	15	Pre-Shape
	AHW14R307P		300			Pre-Shape
ASAHI Gaia Third	AHW14R008P	0.30 / 0.36 (0.012 / 0.014)	190	15	15	Pre-Shape
	AHW14R308P		300			Pre-Shape
ASAHI SUOH 03	AHW14R011P	0.36 (0.014)	190	3	19	Pre-Shape
	AHW14R311P		300			Pre-Shape
	AHW14R013P		190			Straight
	AHW14R313P		300			Straight

Traditional Wires

Product	Catalog No.	Diameter (mm (inch))	Usable Length (cm)	Radiopaque Segment (cm)	Spring Coil Length (cm)	Tip Shape
Route / PROWATERflex	AGH147000	0.36 (0.014)	180	3	20	Straight
	AGH146000		180			Straight
Rinato / PROWATER	AGH146300	0.36 (0.014)	300	3	20	Straight
	AGH146000J		180			J
Soft	AG141000	0.36 (0.014)	180	3	30	Straight
	AG141300		300			Straight
	AG141000J		180			J
Fielder	AGP140000	0.36 (0.014)	180	3	12	Straight
Fielder FC	AGP140001	0.36 (0.014)	180	3	11	Straight
	AGP140301		300			Straight
Fielder XT	AGP140002	0.23 / 0.36 (0.009 / 0.014)	190	16	16	Straight
	AGP140302		300			Straight
ASAHI Miracle 3 / ASAHI MIRACLEBros 3	AG14M050	0.36 (0.014)	180	11	11	Straight
	AG14M060		180			Straight
ASAHI Miracle 6 / ASAHI MIRACLEBros 6	AG14M070	0.36 (0.014)	180	11	11	Straight
	AG14M070		180			Straight
ASAHI Miracle 12 / ASAHI MIRACLEBros 12	AG14M070	0.36 (0.014)	180	11	11	Straight
	AG14M070		180			Straight
ULTIMATEBros 3	AG14S003S	0.36 (0.014)	180	11	11	Straight
ASAHI Conquest / ASAHI Confianza	AG143090	0.23 / 0.36 (0.009 / 0.014)	180	20	20	Straight
ASAHI Conquest Pro / ASAHI Confianza Pro	AGH143090	0.23 / 0.36 (0.009 / 0.014)	180	20	20	Straight
ASAHI Conquest Pro 12 / ASAHI Confianza Pro 12	AGH143091	0.23 / 0.36 (0.009 / 0.014)	180	20	20	Straight
ASAHI Conquest Pro 8-20 / ASAHI Confianza Pro 8-20	AGH143092	0.20 / 0.36 (0.008 / 0.014)	180	17	17	Straight
Grand Slam	AG141002	0.36 (0.014)	180	4	4	Straight
	AG141302		300			Straight
ASAHI RG3	AG141002J	0.26 (0.010)	180	3	8	J
	AHW10S302S		330			Straight
ASAHI EXTENSION 165cm	AG149001	0.36 (0.014)	165	-	-	-

*ASAHI Conquest Pro 8-20 / ASAHI Confianza Pro 8-20 is not CE approved.
Not all products, shapes and sizes are available in all markets. Please check availability with your sales representative.
Coated with SLIP-COAT™ coating.

© 2019 ASAHI INTECC CO., LTD.
*ASAHI, "ACT ONE", "ASAHI SION", "ASAHI Gaia", "Fielder", and "SUOH" are trademarks or registered trademarks of ASAHI INTECC CO., LTD. in Japan and other countries.

Manufactured by:



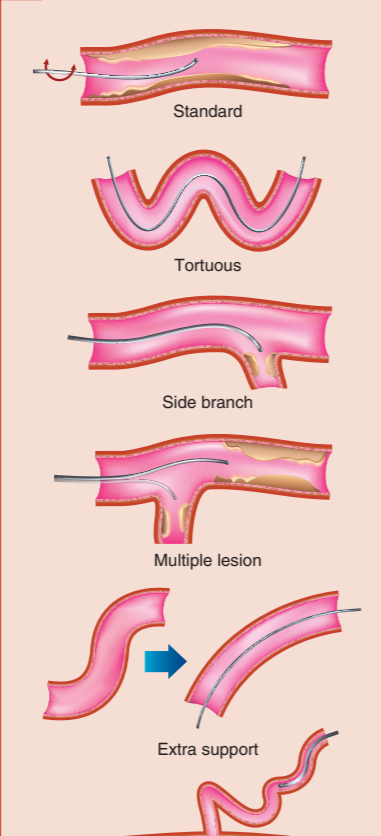
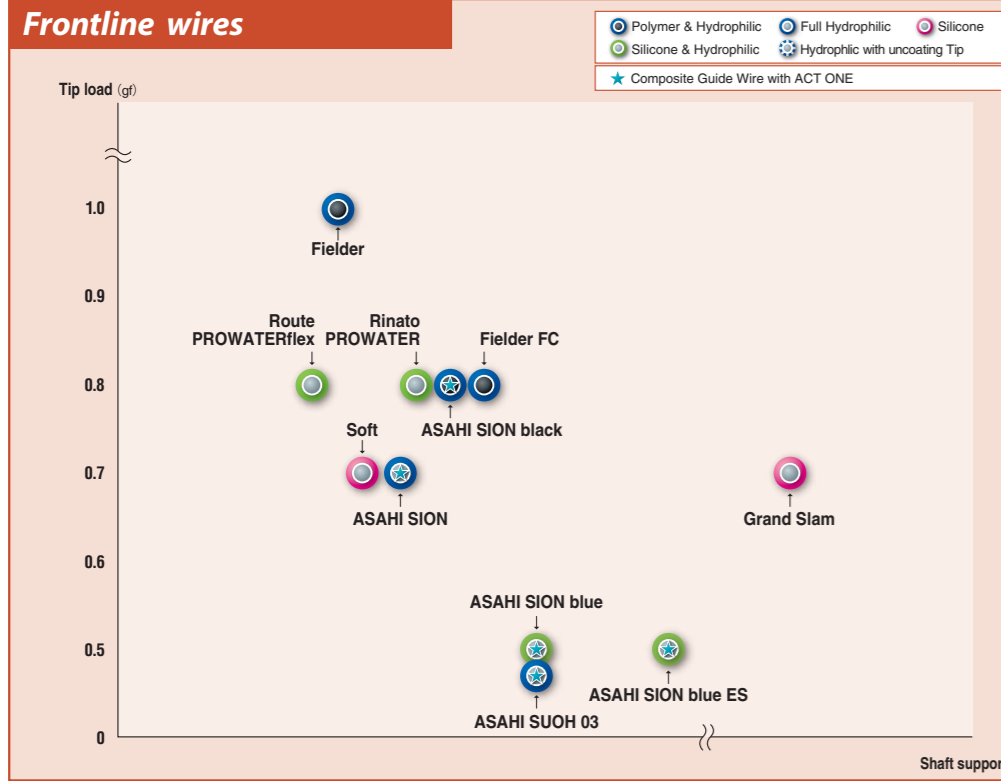
ASAHI INTECC CO.,LTD.

3-100 Akatsuki-cho, Seto, Aichi 489-0071 Japan
TEL:+81-561-48-5551 FAX:+81-561-48-5552

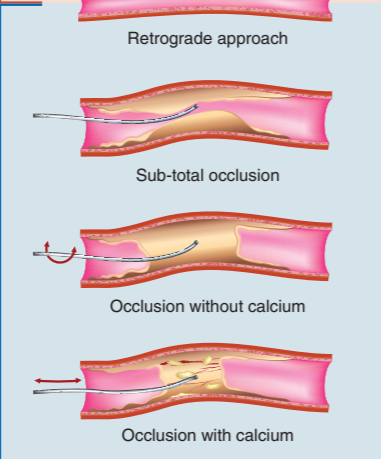
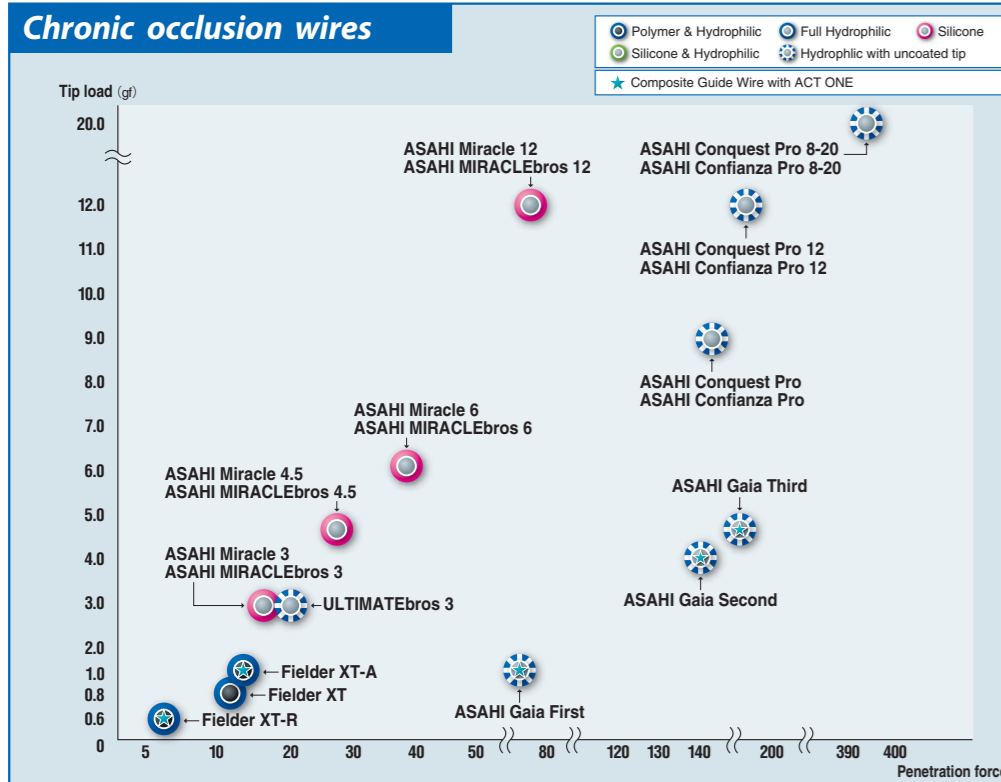
www.asahi-intecc.com

Distributed by:

Frontline wires



Chronic occlusion wires



- Polymer & Hydrophilic**
Enhanced lubricity for better crossability of severe stenoses.
- Silicone & Hydrophilic**
Combine advantages of both. Silicone coating over the last few centimeters distally, hydrophilic coating over the rest of the coil and shaft.
- Composite Guide Wire with ACT ONE**
- Silicone**
Prevent slippage to gain tactile response for lesion morphology.
- Full Hydrophilic**
Enhance lubricity for easier wire manipulation in lesions.

ASAHI

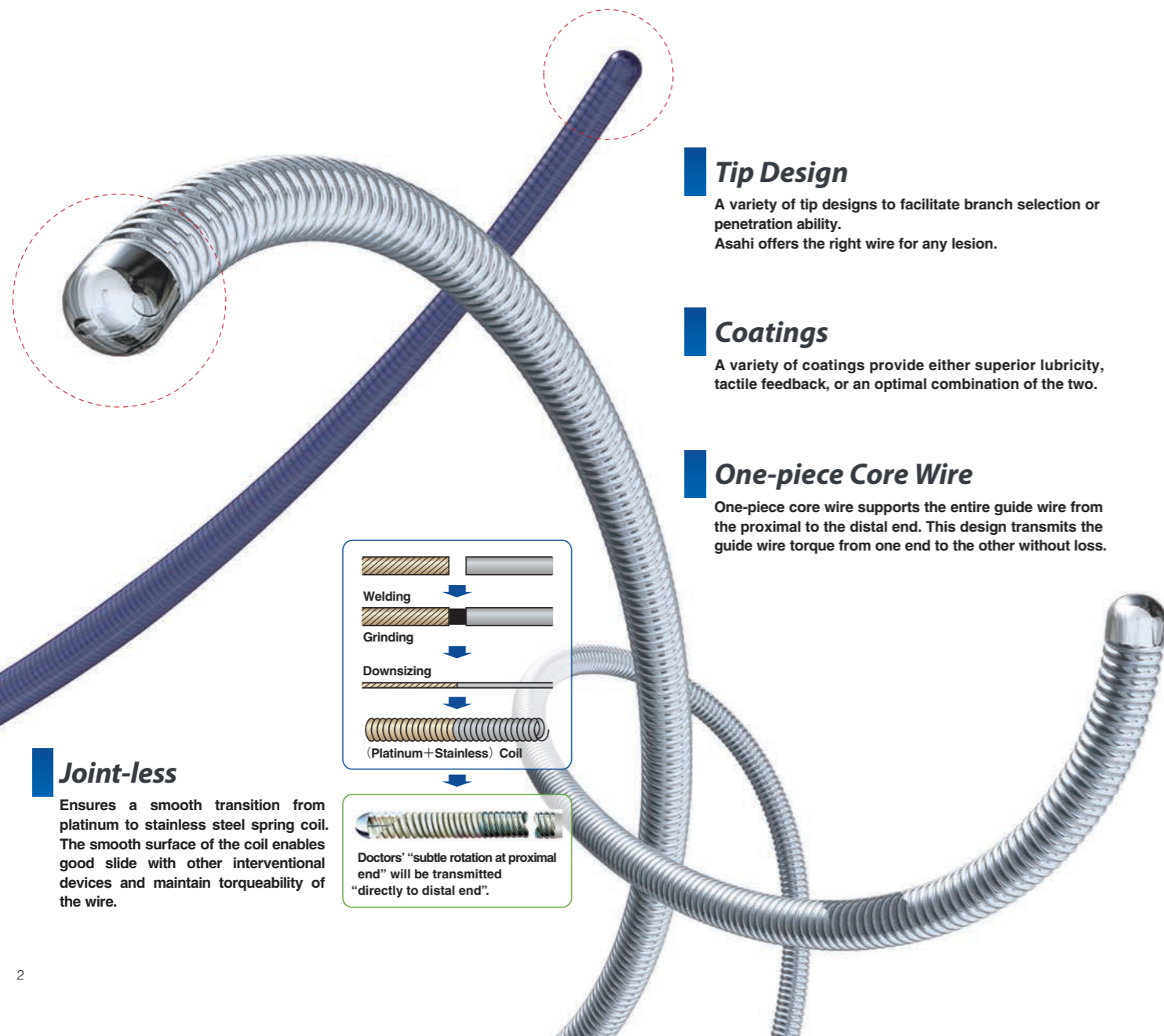
PTCA Guide Wire

ASAHI

PTCA Guide Wire

The Right Wire for Any Case

The reliability of the products is highly recognized by its users in the medical profession.



Tip Design

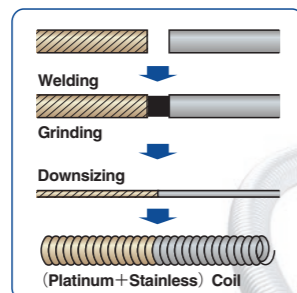
A variety of designs to facilitate branch selection or penetration ability. Asahi offers the right wire for any lesion.

Coatings

A variety of coatings provide either superior lubricity, tactile feedback, or an optimal combination of the two.

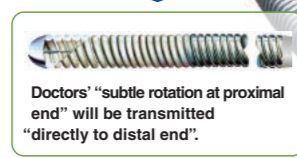
One-piece Core Wire

One-piece core wire supports the entire guide wire from the proximal to the distal end. This design transmits the guide wire torque from one end to the other without loss.



Joint-less

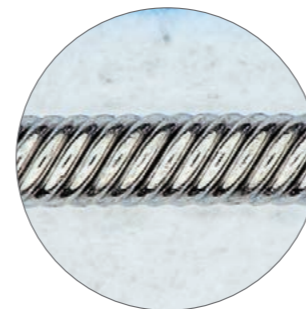
Ensures a smooth transition from platinum to stainless steel spring coil. The smooth surface of the coil enables good slide with other interventional devices and maintain torqueability of the wire.



Composite Guide Wire

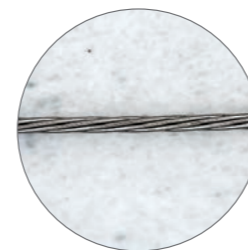
- Enhanced tip durability
- Combination of flexibility and torque force
- Reduced whipping of the wire due to superior torque response

ACT ONE



ASAHI brand multiwire coil provides torque force, torque response, durability and flexibility.

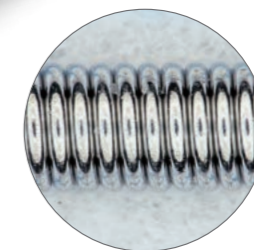
Twist Wire



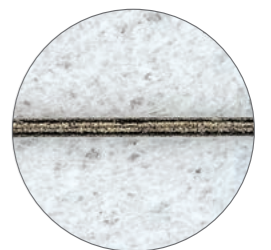
*Twist wire involved only with ASAHI SION, ASAHI SION blue and ASAHI SION black.



Spring Coil

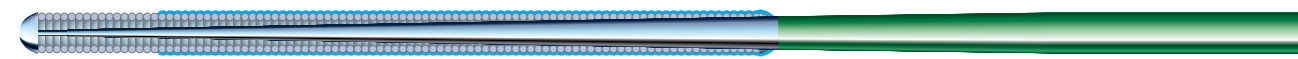


Core Wire



〈Frontline Guide Wires〉

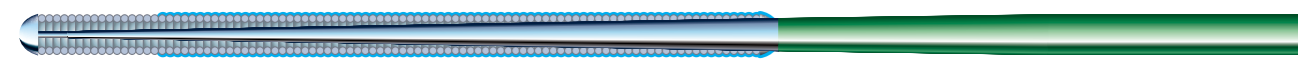
Rinato / PROWATER



- Tip load 0.8 gf
- Tip radiopacity 3 cm
- SLIP-COAT® coating over the spring coil*

First choice guide wire with floppy tip and moderate core wire support. Excellent maneuverability and good support for device delivery. *Silicone coating up to 30mm from the tip for safer procedures.

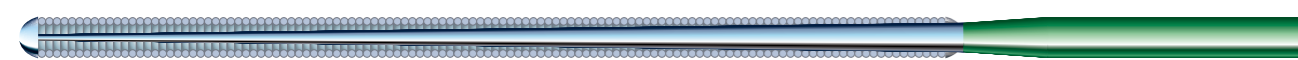
Route / PROWATERflex



- Tip load 0.8 gf
- Tip radiopacity 3 cm
- SLIP-COAT® coating over the spring coil*

First choice guide wire featuring a soft tip with good shaping memory and excellent guide wire trackability. Sufficient support for delivery of most interventional devices. *Silicone coating up to 30mm from the tip for safer procedures.

Soft



- Tip load 0.7 gf
- Tip radiopacity 3 cm
- Silicone coating over the spring coil

Basic frontline guide wire with floppy tip and non hydrophilic coating to ensure optimal tactile feedback.

Fielder



- Tip load 1.0 gf
- Tip radiopacity 3 cm
- Polymer jacket length 22 cm
- SLIP-COAT® coating over the polymer jacket

A polymer jacket guide wire, providing advanced slip performance and trackability.

Fielder FC



- Tip load 0.8 gf
- Tip radiopacity 3 cm
- Polymer jacket length 20 cm
- SLIP-COAT® coating over the polymer jacket

Fine control over challenging tortuous vessels and highly stenosed lesions. Polymer jacket provides advanced slip performance with superior torque and support.

〈Others〉

Grand Slam



- Tip load 0.7 gf
- Tip radiopacity 4 cm
- Silicone coating over the spring coil

Stiff wire shaft provides extra support for delivery of interventional devices in extreme cases.

〈Complex and Chronic Occlusion Guide Wires〉

Fielder XT



- Tip load 0.8 gf
- Tip radiopacity 16 cm
- Polymer jacket length 16 cm
- Tip outer diameter 0.23 mm (0.009 inch)
- SLIP-COAT® coating over the polymer jacket

Polymer jacket, providing excellent lubricity and trackability in tortuous vessels. The tapered tip provides extreme precision for the treatment of complex lesions such as sub-total occlusions and long diffused lesions.

ULTIMATEbros 3



- Tip load 3.0 gf
- Tip radiopacity 11 cm
- SLIP-COAT® coating over the spring coil until the middle of the shaft / without tip

Long hydrophilic coating maintains high maneuverability, allowing for improved wire manipulation in heavy stenosed lesions. Fine shaping improves vessel selectivity and reduces the risk of false lumen expansion.

ASAHI Miracle series / ASAHI MIRACLEbros series

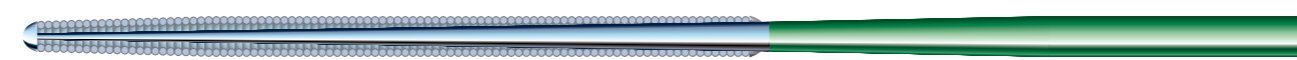
3 / 6 / 12



- Tip load 3.0 / 6.0 / 12.0 gf
- Tip radiopacity 11 cm
- Silicone coating over the spring coil

Guide wire with good tactile feedback which maintains torqueability through the occlusion.

ASAHI Conquest / ASAHI Confianza

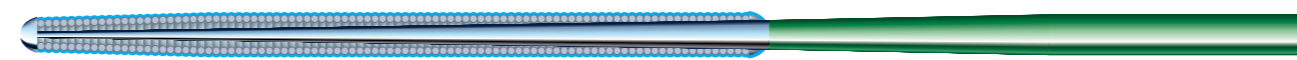


- Tip load 9.0 gf
- Tip radiopacity 20 cm
- Silicone coating over the spring coil

Silicone coated and tapered to 0.23mm (0.009 inch) at the tip. The 9gf stiff, tapered tip helps to penetrate highly stenosed lesions.

ASAHI Conquest Pro series / ASAHI Confianza Pro series

9 / 12 / 8-20



- Tip load 9.0 / 12.0 / 20.0 gf
- Tip radiopacity 20 cm (8-20 17 cm)
- SLIP-COAT® coating over the spring coil, excluding the tip
- Tip outer diameter
- ASAHI Conquest Pro, Pro12 0.23 mm (0.009 inch)
- ASAHI Conquest Pro 8-20 0.20 mm (0.008 inch)

Tapered guide wire for crossing complex lesion with heavy calcification or tough fibrous tissues.

〈Externalization Guide Wire〉

ASAHI RG3



- Tip load 3.0 gf
- Tip radiopacity 3 cm
- SLIP-COAT® coating over the spring coil and until the middle of the shaft
- Shaft diameter 0.26 mm (0.010 inch)
- Guide wire length 330 cm

For guide wire externalization only. Optimal wire strength, hydrophilic coating and 0.26 mm (0.010 inch) shaft provide superior inside-catheter pushability. With the inner wall damage possibility reduced in tortuous vessels as well, the risk of complication is minimized.

Composite Guide Wire

PTCA guide wire with ACT ONE

