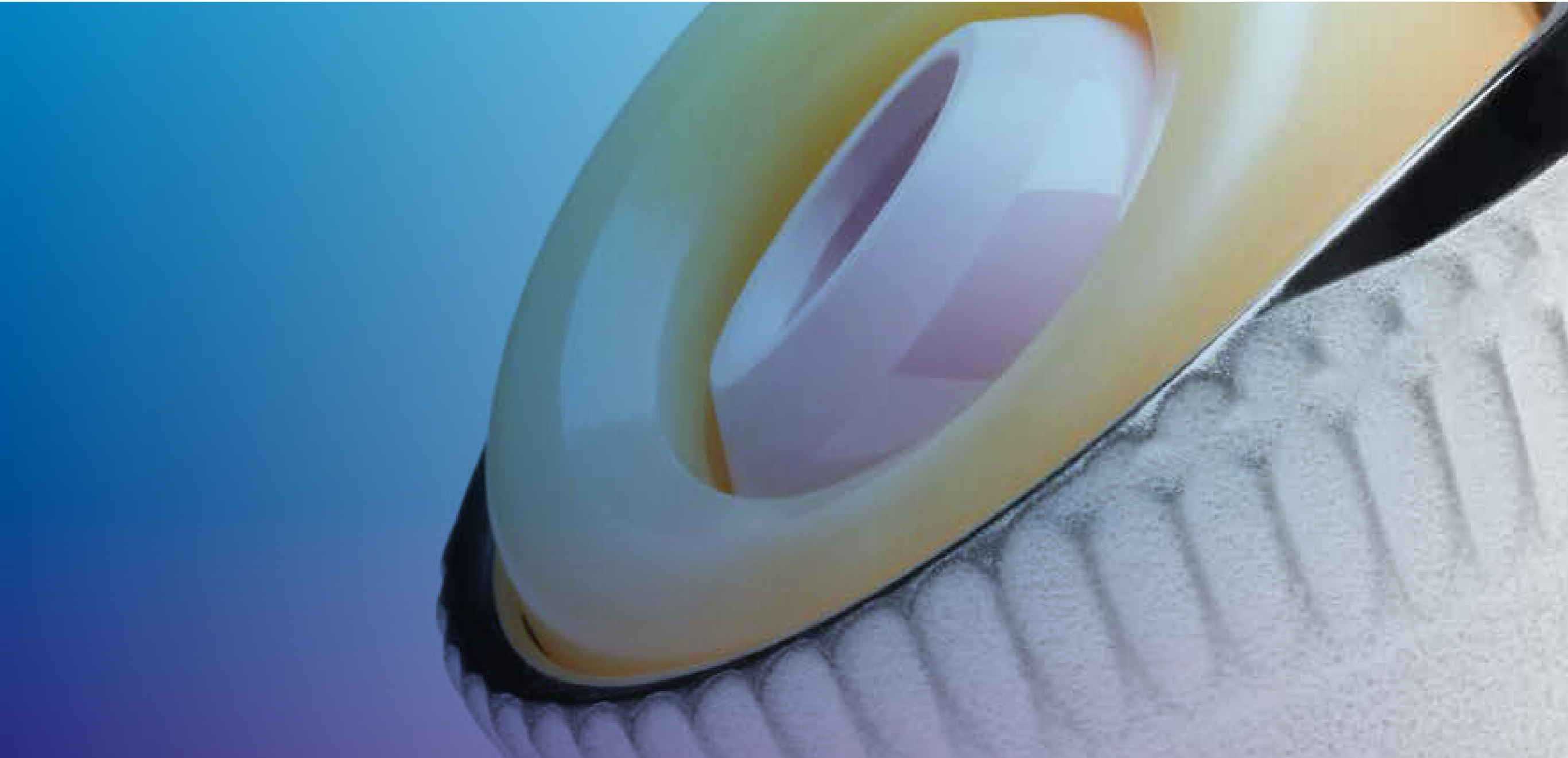
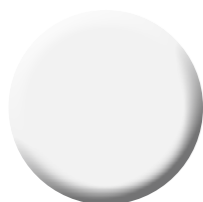


Avantage™ Acetabular System



Factsheet

Product positioning (tagline)	Versatility in motion
Origin of the Brand Name	From French meaning “advantage”
Launched (year)	1998
Average annual unit sales	25,000
Cup design (philosophy)	Avantage Reload & Avantage 3P PLASMA Ti HA: Anatomic shape with peripheral fins for press fit Avantage Cemented: Cemented anatomic shape
Cup options (variants)	Avantage Reload; Avantage 3P; Avantage Cemented
Shell material	Avantage Reload & Avantage 3P PLASMA Ti HA: Titanium plasma spray coating with hydroxyapatite coating (3P also available with HA coating only, no plasma spray) Avantage Cemented: Fully polished stainless steel
Substrate material (if applicable)	Stainless steel
HA coating available	Yes (Exception: Avantage Cemented)
Product range (cup sizes)	Avantage Reload & Avantage 3P PLASMA Ti HA: 44 – 64 mm in 2 mm increments Avantage Cemented: 44 – 60 mm in 2 mm increments
Liner (inlay) styles	Dual mobility
Liner (inlay) tribologic (material) options	Standard Poly (UHMWPE), Vitamin E HXLPE
Liner (inlay) sizes (ID x OD)	22.2 x 38 – 58 mm 28 x 44 – 58 mm for standard polyethylene 28 x 38 – 58 mm for Vitamin E pol
ODEP [†]	10A (2016)



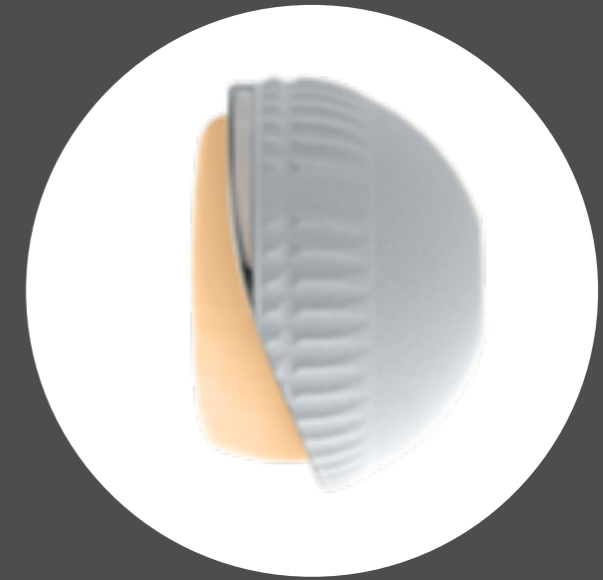
Key Selling Features



Anatomic design with dual mobility bearing is designed to reduce risk of impingement and increases ROM.



Ultra low wear polyethylene provides long-term oxidation protection with versatility and longevity.¹



Superior cap is designed to reduce risk of superior dislocation while smooth superior to inferior transition reduces soft tissue irritation.



Sizing Charts

Reload

Size	Reference Number (Reload)	Shell Thickness equator (mm)	Outer Diameter (mm)	Inner Diameter (mm)	Height (mm)	Shell Thickness pole (mm)
44	P0460P44	2.85	44	38	29	1.35
46	P0460P46		46	40	30	
48	P0480P48		48	42	31	
50	P0500P50		50	44	32	
52	P0520P52		52	46	33	
54	P0540P54		54	48	34	
56	P0560P56		56	50	35	
58	P0580P58		58	52	36	
60	P0600P60		60	54	37	
62	P0620P62		62	56	38	
64	P0640P64		64	58	39	



Sizing Charts

3P PLASMA Ti HA

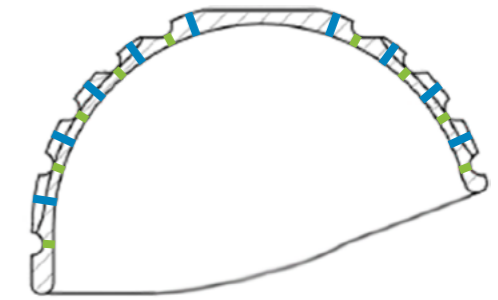
Size	Reference Number (Reload)	Shell Thickness equator (mm)	Outer Diameter (mm)	Inner Diameter (mm)	Height (mm)	Shell Thickness pole (mm)
44	P0461P44	3.05	44	38	29	1.35
46	P0461P46	2.5	46	40	30	
48	P0461P48	2.95	48	42	31	
50	P0461P50	2.95	50	44	32	
52	P0461P52	3.1	52	46	33	
54	P0461P54	3.15	54	48	34	
56	P0461P56	3	56	50	35	
58	P0461P58	3.15	58	52	36	
60	P0461P60	3.15	60	54	37	
62	P0461P62	3.15	62	56	38	
64	P0461P64	3.15	64	58	39	



Sizing Charts

Cemented

Size	Reference Number (Reload)	Shell Thickness equator (mm)	Outer Diameter (mm)	Inner Diameter (mm)	Height (mm)	Shell Thickness pole (mm)
44	P0463044	1.35 in the groove 2.85 between the inner and the outer diameters	44	38	29	1.35
46	P0463046		46	40	30	
48	P0463048		48	42	31	
50	P0463050		50	44	32	
52	P0463052		52	46	33	
54	P0463054		54	48	34	
56	P0463056		56	50	35	
58	P0463058		58	52	36	
60	P0463060		60	54	37	
62	-		-	62	56	
64	-	-	64	58	39	



Thickness between the inner and the outer diameters

Thickness in the groove



Sizing Charts

Reload

Ref. Number (UHMWPE)	Ref. Number (Vitamin E HXLPE)	Head Size/ Inner Diameter	Outer Diameter (mm)	Bearing Thickness (mm)
P0560044	P0560E44	22.2	38	7.625
P0560046	P0560E46	22.2	40	8.625
P0560048	P0560E48	22.2	42	9.625
P0560050	P0560E50	22.2	44	10.625
P0560052	P0560E52	22.2	46	11.625
P0560054	P0560E54	22.2	48	12.625
P0560056	P0560E56	22.2	50	13.625
P0560058	P0560E58	22.2	52	14.625
P0560060	P0560E60	22.2	54	15.625
P0560062	P0560E62	22.2	56	16.625
P0560064	P0560E64	22.2	58	17.625
-	P0561E44	28	38	4.75
-	P0561E46	28	40	5.75
-	P0561E48	28	42	6.75
P0561050	P0561E50	28	44	7.75
P0561052	P0561E52	28	46	8.75
P0561054	P0561E54	28	48	9.75
P0561056	P0561E56	28	50	10.75
P0561058	P0561E58	28	52	11.75
P0561060	P0561E60	28	54	12.75
P0561062	P0561E62	28	56	13.75
P0561064	P0561E64	28	58	14.75

