

Living up to Life

Leica
MICROSYSTEMS



Leica DM500 & DM750

A New Generation's Choice of Innovative Educational Microscopes

Made for Future Nobel Prize Winners

Science Teaching Revitalized

The more time the instructor has to teach, the more students can learn. The Leica DM500 and Leica DM750 microscopes were specifically developed to revitalize science teaching and to achieve the goal of more hands-on time for Life Science courses. With many student-friendly features and high-quality construction, the Leica DM500 and Leica DM750 invigorate science learning and teach the next generation of scientists effectively and efficiently.

SUPERB OPTICS

- › Based on the same optical platform as Leica Microsystems' research microscope line, students enjoy outstanding optical performance with full access to virtually all accessories from Leica's microscope product line.
- › NEW! 100× dry (no oil needed) objective provides very high resolution (N.A. 0.8) while eliminating the need for oil.

EZLITE™

- › LED illumination provides cool, white light with a lifetime of over 20 years average use. There is no need to change lamps during lab time, and this saves the expense of replacement lamps as well.
- › The cost-savings pays for several microscopes over their lifetimes.

SAFETSTAGE™

- › Microscope stage maintains its dimension, which eliminates the chance of injury from contact with a conventional stage rack.
- › Rounded edges are easy on the skin.

EZSTORE™

- › Integrated vertical handle provides easy carrying and lifting when storing on high shelves; undercut on front of stand works in combination with the handle for safer, two-handed carrying.
- › Integrated cord wrap eliminates damage to microscope components from improper cord wrapping; vertical cord insertion prevents the cord from pulling partially out of the stand while in storage or in use.
- › The unique shape of the microscope stand protects controls from damage when microscopes are stored side-by-side.

EZGUIDE™

- › Student friendly slide holder helps prevent slide chipping

USB POWER CONNECTOR

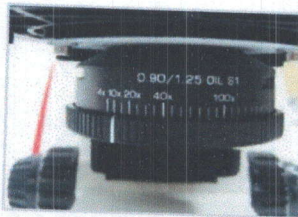
- › Providing power to the Leica USB cameras is extremely easy. Simply connect the camera via the provided USB cable to the 5 V/1.5 A USB power connector on the rear of the Leica DM500 and Leica DM750 stand. This saves the cost of an external power supply for the camera plus reduces the complexity at the workstation.

AGTREAT™

- › The possible contamination with germs from surfaces is of great concern, especially in educational environments. Leica Microsystems has integrated an additive to the material of all microscope touchpoints to inhibit the growth of bacteria. This helps prevent the spread of disease via the microscope surfaces and leads to a healthier laboratory environment.

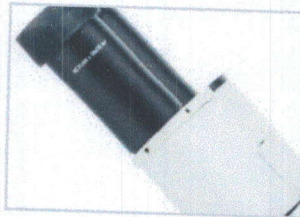
Leica DM500 – Science Teaching Made Easy

The Leica DM500 is ideal for entry level Life Science courses. The microscope's stand provides "plug and play" capability. All students need to do is turn the power on, place the specimen slide on the stage, focus, and enjoy the view!



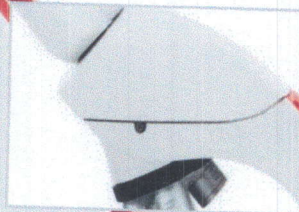
READY TO WORK

- › Pre-centered, pre-focused Abbe condenser eliminates the need for adjustments



EZTUBE™

- › Eyepieces integrated with the eyetubes prevents loss
- › Preset diopter adjustments eliminates the risk of incorrectly setting the diopters
- › Other viewing tubes are also available



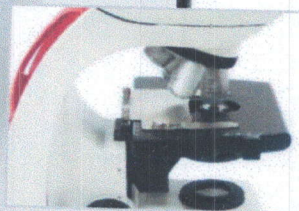
SAFER ROTATION

- › Captive thumbscrew for safer rotation of the EZTube™



ALL IN ONE

- › Abbe Condenser with slot for phase contrast and darkfield sliders, including a 4 position phase slider, which offers brightfield and phase capabilities all in one slider



PERFECT LIGHT

- › LED illumination designed to provide even lighting across the full field of view without adjustments

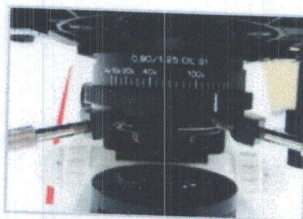


Leica DM750 – Science Teaching for a New Generation

The Leica DM750 is designed specifically for the versatile needs of advanced Life Science courses and for professional training such as medical, veterinary, and dental schools.

VERSATILE

- › Standard condenser for magnifications 4x – 100x
- › Phase turret condenser for brightfield and phase contrast
- › Flip top condenser for low magnifications
- › The Leica DM750 is available with a 4 position or 5 position nosepiece



WEAR RESISTANT

- › Special stage finish offers additional protection from friction damage

ENERGY SAVING

- › Time delay shutoff saves energy by automatically turning off the illumination after 2 hours of no use

A+ FOCUS, CONTRAST & ILLUMINATION

- › Weighted focus knobs provide inertia and extremely accurate focus capability
- › Koehler field diaphragm available as an option for optimum illumination and contrast

SHARED VIEWING MADE EASY

- › Variety of viewing tubes provides free rotation while securely fixed to the stand
- › Standard viewing tubes with eyepiece locking screws prevent loss of eyepieces

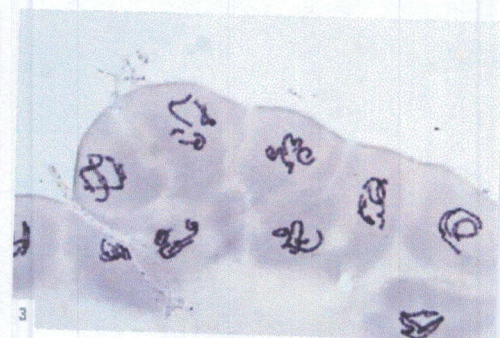
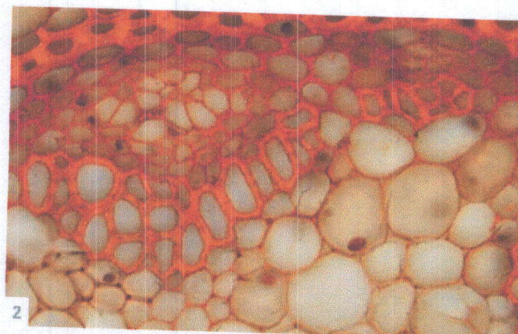
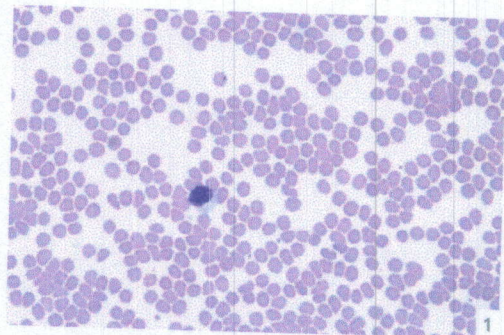


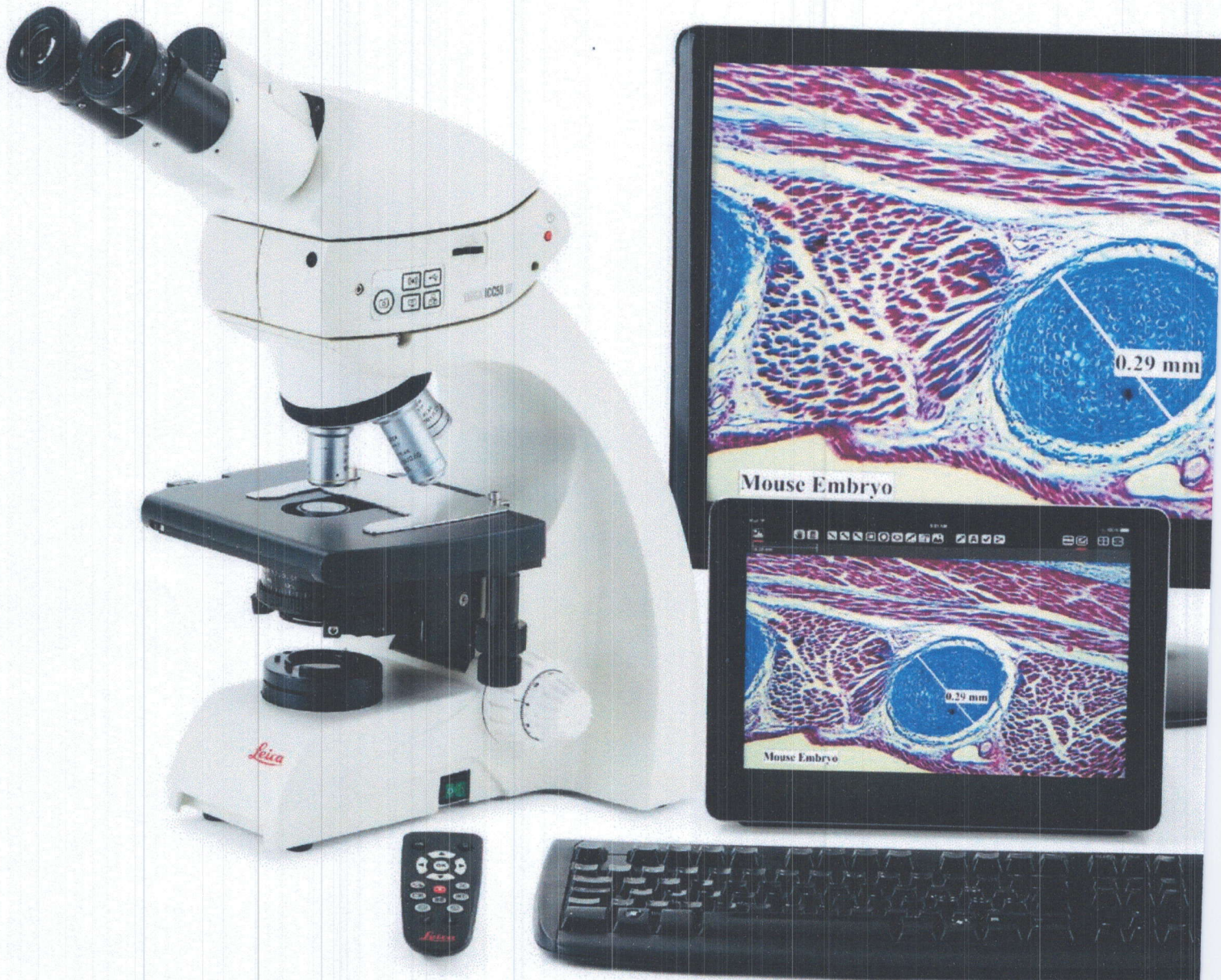
Go Wireless!

The ability to share, capture, and archive images is an important part of the microscopy laboratory. The Leica DM500 and Leica DM750 are compatible with the full range of Leica Microsystems imaging solutions, allowing you to select the camera which best suits the demands of your classroom. Keep students on topic and maximize learning time with the NEW Leica ICC50 W High Definition Wireless camera module.

LEICA ICC50 W CAMERA MODULE – INTEGRATED AND MODULAR

- › WiFi mode to wirelessly broadcast an HD image directly to your mobile device for independent annotation and image capture by several students
- › Download the Leica AirLab app for camera setup, annotations, measuring, image capture, and sharing to email, photo folders, or other social media connections
- › USB mode to connect directly by cable to your PC for fastest live image of moving objects
- › The ICC50 W is compatible with the full range of Leica imaging software modules for versatility.
- › Ethernet mode to connect to your own network and allow for the maximum number of mobile devices to access the image
- › SD mode to capture directly onto a memory card when mobile devices and PC's are not available
- › Always connect to an HD display for maximum flexibility
- › Handheld remote for convenient fine tuning of camera settings, capturing onto the SD card, and viewing the gallery of images saved on the SD card
- › The Leica ICC50 W can be powered directly from the Leica DM500 or Leica DM750 stands minimizing infrastructure and cost. Power by external power supply or PC is also possible.
- › Modular design allows for easy upgrades and service

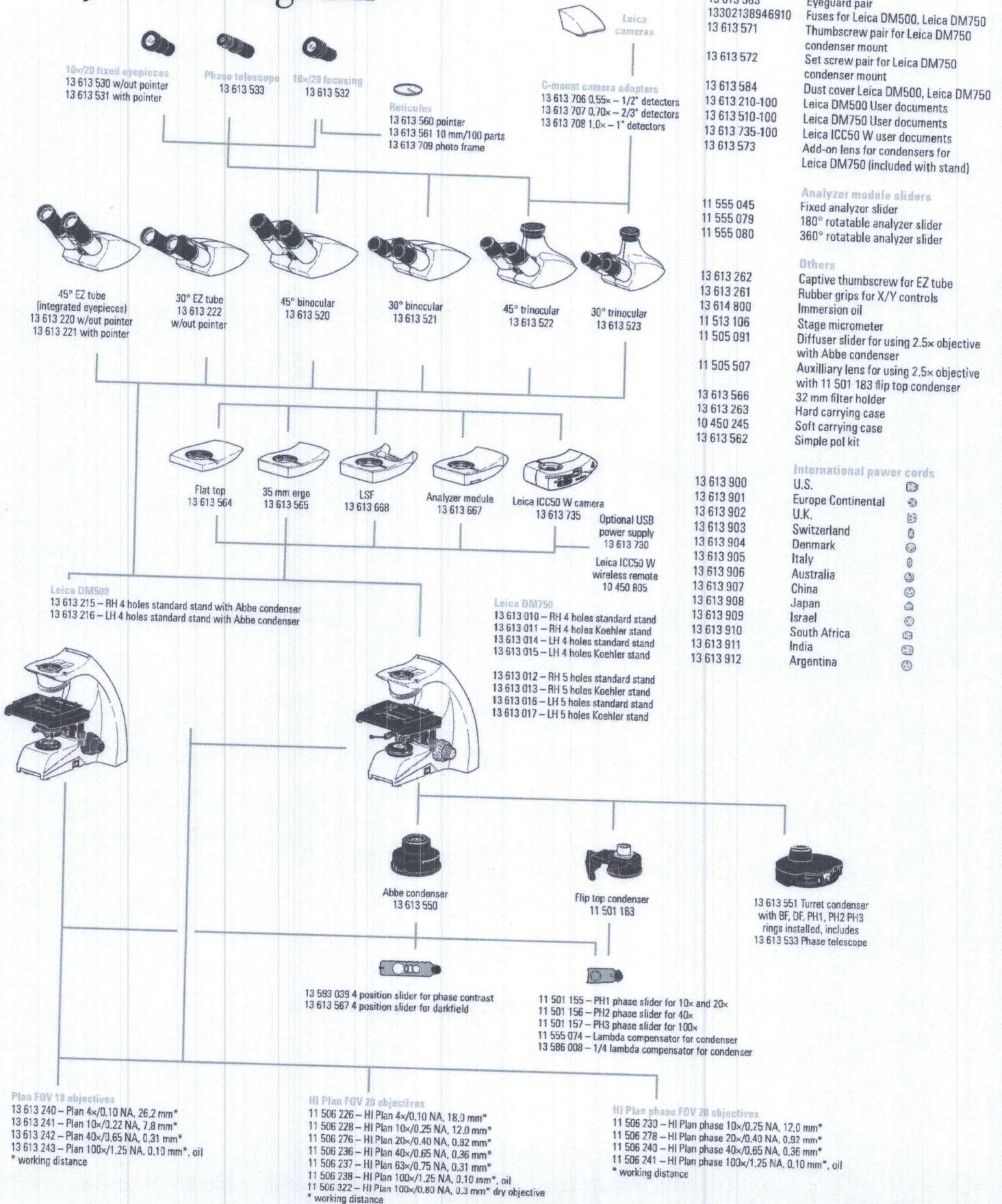




- 1: Human Blood
- 2: Convallaria – Lily of the Valley
- 3: Giant Chromosomes
- 4: Parotid Gland
- 5: Pine
- 6: Taste Buds

Leica DM750 with Leica ICC50 W digital microscope camera

System Diagram



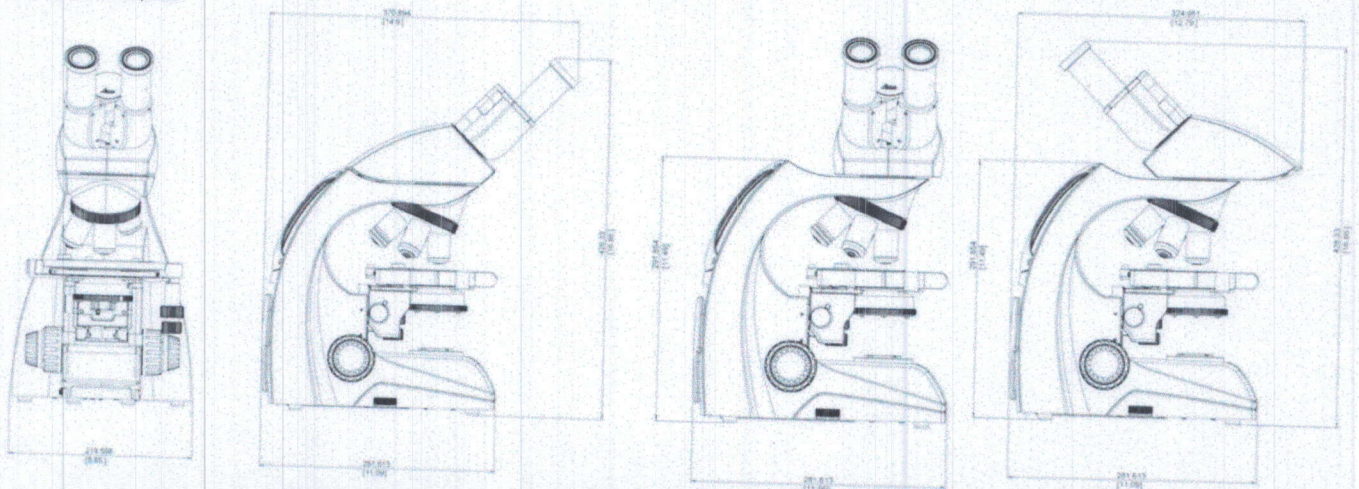
Preconfigured Outfits

| OUTFIT ORDERING NUMBER | | 13 613 205 | 13 613 206 | 13 613 006 | 13 613 003 | 13 613 001 | 13 613 004 | 13 613 002 | 13 613 005 |
|------------------------|---|------------|------------|------------|------------|------------|------------|------------|------------|
| | | DM500 | DM500 | DM750 | DM750 | DM750 | DM750 | DM750 | DM750 |
| STANDS | | | | | | | | | |
| 13 613 215 | DM500 RH Stand with Abbe condenser | X | X | | | | | | |
| 13 613 010 | DM750 RH Stand | | | X | X | X | X | | |
| 13 613 011 | DM750 RH Stand Koehler | | | | | | | X | X |
| TUBES | | | | | | | | | |
| 13 613 220 | 45° EZ tube | X | | X | | | | | |
| 13 613 221 | 45° EZ tube with pointer | | X | | X | | | | |
| 13 613 520 | 45° binocular tube | | | | | X | X | X | X |
| EYEPIECES | | | | | | | | | |
| 13 613 530 | 10x/20 eyepiece w/eyeguard | | | | | X | | X | |
| 13 613 531 | 10x/20 pointer eyepiece w/eyeguard | | | | | | X | | |
| 13 613 532 | 10x/20 focusing eyepiece w/eyeguard | | | | | X | X | X | X |
| CONDENSERS | | | | | | | | | |
| 13 613 550 | Abbe condenser 0.9 Dry/1.25 oil | | | X | X | X | X | X | X |
| OBJECTIVES | | | | | | | | | |
| 13 613 240 | Plan 4x/0.10 NA, 26.2 mm W.D. | X | X | X | X | | | | |
| 13 613 241 | Plan 10x/0.22 NA, 7.8 mm W.D. | X | X | X | X | | | | |
| 13 613 242 | Plan 40x/0.65 NA, 0.31 mm W.D. | X | X | X | X | | | | |
| 13 613 243 | Plan 100x/1.25 NA, 0.10 mm W.D., oil | X | X | X | X | | | | |
| 11 506 226 | HI Plan 4x/0.10 NA, 18.0 mm W.D. | | | | | X | X | X | X |
| 11 506 228 | HI Plan 10x/0.25 NA, 12.0 mm W.D. | | | | | X | X | X | X |
| 11 506 236 | HI Plan 40x/0.65 NA, 0.36 mm W.D. | | | | | X | X | X | X |
| 11 506 238 | HI Plan 100x/1.25 NA, 0.10 mm W.D., oil | | | | | X | X | X | X |
| 13 614 800 | Immersion oil | X | X | X | X | X | X | X | X |

POWER CORD NOT INCLUDED: Must be ordered separately

Dimensions Leica DM500 / DM750

Dimensions in mm/inch



Specifications Leica DM500 / DM750

| | DM500 | DM750 | | DM500 | DM750 |
|---|-------|-------|--|-------|-------|
| SEPARATE EYEPIECES | | | SAFETSTAGE™ | | |
| High eyepoint | X | X | Stage surface 185 mm (150 mm front) wide × 140 mm deep | X | X |
| 10×/20 (20 mm field of view) | X | X | Rounded stage edges | X | X |
| Available with or without pointer | X | X | Non extending rack | X | X |
| Available fixed or focusing | X | X | Verniers for X/Y coordinates | X | X |
| Focusing eyepieces with reticule holder for 24.5 mm reticle | X | X | Wear resistant stage surface | X | X |
| Foldable eyeguards | X | X | CONDENSER | | |
| 30 mm mounting diameter | X | X | Prefocused and precentered Abbe condenser | X | |
| EZTUBE™ | | | Centerable and focusable condenser mount | | X |
| Preset diopters for corrected vision | X | X | Slot in Abbe condenser for contrast sliders (phase, darkfield, compensator) | X | X |
| 45 degree viewing angle | X | X | Magnification labels on condenser | X | X |
| 10×/18 (18 mm field of view) | X | X | Standard Leica condenser mount for condensers (Abbe, turret, flip top, etc.) | | X |
| Attaches to stand with set screw | X | X | FOCUS | | |
| Captive thumbscrew available for safer rotation | X | X | Low position focus controls | X | X |
| Eyepieces are integrated with tube | X | X | Self adjusting focus mechanism | X | X |
| Available with pointer and without pointer | X | X | 300 microns per fine focus rotation | X | X |
| Interpupillary distance range 52 mm – 75 mm | X | X | Calibrated in 3 micron increments | X | X |
| OTHER VIEWING TUBES FOR SEPARATE EYEPIECES | | | Weighted focus knobs | | X |
| 45 degree, 30 degree, trinocular | X | X | EZLITE™ | | |
| Maximum field of view 20 mm | X | X | Preset field aperture only | X | |
| Rotatable dovetail | X | X | Available with or without adjustable Koehler field diaphragm | | X |
| Leica tube dovetail standard | X | X | LED illumination – 6 000 K temp, 25 000 h life at full intensity | X | X |
| Eyepiece locking screw | X | X | Continuous intensity adjustment | X | X |
| Interpupillary distance range 52 mm – 75 mm | X | X | Illumination sufficient for viewing at lowest intensity | X | X |
| STAND | | | Simple polarizing kit available | X | X |
| Stand shape protects controls | X | X | 2 hour Auto Off (can be disabled or enabled) | | X |
| Stand construction – die-cast aluminium | X | X | Auto Off default: 4 hole stands enabled, 5 hole stands disabled | | X |
| External fuses | X | X | IMAGING | | |
| Knurled nosepiece | X | X | Trinocular tubes available (50 %/50 % light split) | X | X |
| 4 position nosepiece only | X | | C-mount adapters with standard Leica mount | X | X |
| 4 or 5 position nosepiece available | | X | Leica ICC50 W intermediate camera module (50 %/50 % light split) | X | X |
| Drop in holder for 32 mm mounted or unmounted filters | X | X | INTERMEDIATE MODULES | | |
| 5 V/1.5 A USB power supply to power camera | X | X | 35 mm intermediate ergo module available | X | X |
| EZSTORE™ | | | 15 mm flat top module | X | X |
| Vertical handle | X | X | Module for LSF reflected light illuminator | X | X |
| Undercut in front of stand | X | X | Analyzer module | X | X |
| Cord wrap | X | X | AGTREAT™ | | |
| Vertical cord attachment to stand | X | X | Anti microbial treatment | X | X |
| OBJECTIVES | | | CERTIFICATIONS | | |
| Infinity optics platform | X | X | cULus, CE, RoHS | X | X |
| Plan optics for FOV 18 | X | X | Main optical components meet ISO 9022-11 for Mould Growth | X | X |
| HI Plan for FOV 20 | X | X | SHIPPING | | |
| 100× dry objective with N.A. 0.8 (no correction collar) | X | X | Dimensions: 40 cm × 37 cm × 39 cm (H×D×W) | X | X |
| Objective labeling laser engraved (HI Plans) | X | X | Weight: 9 kg | X | X |
| M25 nosepiece thread | X | X | | | |
| EZGUIDE™ | | | | | |
| One-handed slide loading | X | X | | | |
| 26 mm × 76 mm stage travel | X | X | | | |

Clean and Green

WE ACTIVELY IMPLEMENT WAYS TO MAKE OUR ENVIRONMENT
CLEANER AND SAFER FOR THIS GENERATION AND THE NEXT

- › All packaging is completely recyclable
- › No lead content in any of the glass components
- › LED illumination consumes approximately 80 % less energy than standard halogen illumination
- › The time delay shut-off feature found on the Leica DM750 ensures no energy is wasted
- › Constantly optimizing our logistics chain keeps the CO₂ footprint as low as possible
- › AgTreat™ helps prevent the spread of disease via microscope surfaces and leads to a healthier laboratory environment
- › All products have been tested by independent safety laboratories and carry the cULus and CE mark to indicate their design for safety
- › All products are RoHs compliant, which means all electrical components meet restrictions on the use of hazardous substances

SEE MORE AT WWW.LEICA-MICROSYSTEMS.COM/EDUCATION

- › Interactive tour of the Leica DM500 and Leica DM750
- › Leica E-Series stereomicroscopes for low magnification inspection, dissecting, and image capture
- › Leica DM750 P Polarizing Microscope for Earth and Materials Science education
- › Leica DM750 M Microscope for Metallography
- › Selection of higher level microscopes for research
- › A selection of instructional booklets, which are free of charge



The statement by Ernst Leitz in 1907, "With the User, For the User," describes the fruitful collaboration with end users and driving force of innovation at Leica Microsystems. We have developed five brand values to live up to this tradition: Pioneering, High-end Quality, Team Spirit, Dedication to Science, and Continuous Improvement. For us, living up to these values means: **Living up to Life.**

Leica Microsystems operates globally in three divisions, where we rank with the market leaders.

LIFE SCIENCE DIVISION

The Leica Microsystems Life Science Division supports the imaging needs of the scientific community with advanced innovation and technical expertise for the visualization, measurement, and analysis of microstructures. Our strong focus on understanding scientific applications puts Leica Microsystems' customers at the leading edge of science.

INDUSTRY DIVISION

The Leica Microsystems Industry Division's focus is to support customers' pursuit of the highest quality end result. Leica Microsystems provide the best and most innovative imaging systems to see, measure, and analyze the microstructures in routine and research industrial applications, materials science, quality control, forensic science investigation, and educational applications.

MEDICAL DIVISION

The Leica Microsystems Medical Division's focus is to partner with and support surgeons and their care of patients with the highest-quality, most innovative surgical microscope technology today and into the future.

Leica Microsystems – an international company with a strong network of worldwide customer services:

| Active worldwide | Tel. | Fax |
|------------------------------------|--------------------|----------------|
| Australia - North Ryde | +61 2 8870 3500 | 2 9878 1055 |
| Austria - Vienna | +43 1 486 80 50 0 | 1 486 80 50 30 |
| Belgium - Diegem | +32 2 790 98 50 | 2 790 98 68 |
| Brazil - São Paulo | +55 11 2764-2411 | 11 2764-2400 |
| Canada - Concord/Ontario | +1 800 248 0123 | 847 405 0164 |
| Denmark - Ballerup | +45 4454 0101 | 4454 0111 |
| France - Nanterre Cedex | +33 811 000 664 | 1 56 05 23 23 |
| Germany - Wetzlar | +49 64 41 29 40 00 | 64 41 29 41 55 |
| India - Mumbai | +91 226 1880 200 | 226 1880 333 |
| Italy - Milan | +39 02 574 861 | 02 574 03392 |
| Japan - Tokyo | +81 3 5421 2800 | 3 5421 2896 |
| Korea - Seoul | +82 2 514 65 43 | 2 514 65 48 |
| Netherlands - Rijswijk | +31 70 4132 100 | 70 4132 109 |
| People's Rep. of China - Hong Kong | +852 2564 6699 | 2564 4163 |
| - Shanghai | +86 21 6039 6000 | 21 6387 6698 |
| Portugal - Lisbon | +351 21 388 9112 | 21 385 4668 |
| Singapore | +65 6550 5999 | 6564 5955 |
| Spain - Barcelona | +34 93 494 95 30 | 93 494 95 32 |
| Sweden - Kista | +46 8 625 45 45 | 8 625 45 10 |
| Switzerland - Heerbrugg | +41 71 726 34 34 | 71 726 34 44 |
| United Kingdom - Milton Keynes | +44 800 298 2344 | 1908 577640 |
| USA - Buffalo Grove/Illinois | +1 800 248 0123 | 847 405 0164 |