

COR ^{NEW}
Equipment Cart LC

STORZ
KARL STORZ — ENDOSKOPE



UG 230

Equipment Cart LC, rides on 4 antistatic dual wheels equipped with locking brakes, energy beam with integrated electrical subdistributors with 6 sockets, grounding plugs,

Dimensions:

Equipment cart: 830 x 1474 x 730 mm (w x h x d),

Shelf: 630 x 25 x 510 mm (w x h x d),

Caster diameter: 125 mm

including:

Base Module, equipment cart LC

Cover, equipment cart LC

Beam Package, equipment cart LC

Shelf, wide

Drawer Unit with Lock, wide

Camera Holder

2x **Mains Cord**, length 100 cm



UG 603

Shelf, narrow, load capacity max. 60 kg, dimensions: 450 x 25 x 510 mm (w x h x d), for use with Equipment Carts UG xxx

UG 604

Shelf, wide, load capacity max. 60 kg, dimensions: 630 x 25 x 510 mm (w x h x d), for use with Equipment Carts UGxxx

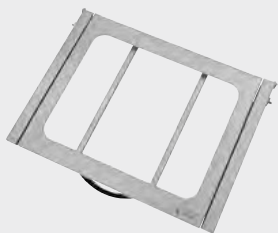


UG 601

Drawer Unit with Lock, small, max. shelf load 60 kg, max. drawer load 5 kg, with cable slot, dimensions: 450 x 126 x 510 mm (w x h x d), for use with Equipment Carts UG xxx

UG 602

Drawer Unit with Lock, wide, max. shelf load 60 kg, max. drawer load 5 kg, with cable slot, dimensions: 630 x 126 x 510 mm (w x h x d), for use with Equipment Carts UG xxx



UG 610

Sliding Tray Holder, narrow, load capacity max. 10 kg, dimensions: 450 x 510 mm (w x d), for use with Equipment Carts UG xxx

UG 611

Sliding Tray Holder, wide, load capacity max. 10 kg, dimensions: 630 x 510 mm (w x d), for use with Equipment Carts UG xxx



UG 608

Equipment Rail, long, for mounting to side of equipment cart, dimensions: 300 x 25 x 10 mm (w x h x d), for Equipment Carts UG xxx

UG 607



Equipment Rail, short, for mounting to side of equipment cart, dimensions: 170 x 25 x 10 mm (w x h x d), for Equipment Carts UG xxx



UG 619

Cable Manager, 2-piece, for mounting to vertical beam, package of 2, for use with Equipment Carts UG xxx

	<div>UG 540</div> <p>Monitor Swivel Arm, height and side adjustable, can be mounted on the left or on the right side, swivel range 180°, reach 780 mm, from center 1170 mm, loading capacity max. 15 kg, with monitor mount VESA 75/100, for use with Equipment Carts UG xxx</p>
	<div>UG 530</div> <p>Swivel Arm, for navigation camera, height and side adjustable, can be mounted on the left or on the right side, swivel range 180°, reach 880 mm, from center 1270 mm, loading capacity max. 1.5 kg, for use with Equipment Carts UG xxx and navigation camera</p>
	<div>UG 520</div> <p>Monitor Holding Arm, long, height and side adjustable, tilting, swivel range up to 320°, reach 760 mm, loading capacity max. 15 kg, with monitor holder VESA 75/100, for use with Equipment Carts UG xxx</p>
	<div>UG 510</div> <p>Monitor Holding Arm, height and side adjustable, tilting, can be mounted either on the left or on the right side, swivel range up to 320°, reach 530 mm, loading capacity max. 15 kg, with monitor holder VESA 75/100, for Equipment Carts UG xxx</p>
	<div>UG 500</div> <p>Monitor Holder, height adjustable, swiveling and tilting, central mount, swivel range approx. 360°, loading capacity max. 18 kg, with monitor mount VESA 75/100, for use with Equipment Carts UG xxx</p>
	<div>UG 501</div> <p>Monitor Holder Adaptor, for central mounting of monitor holding arms on the rear attachment points of the COR equipment carts UG xxx for use with UG 500, UG 510 and UG 520</p>
	<div>UG 614</div> <p>Counter Balance Plate, for improved stability when mounting a monitor holding arm, Dimensions: 356 x 6 x 478 (w x h x d), for use with Equipment Carts UG xxx</p>
	<div>UG 615</div> <p>Auxiliary Counter Balance Plate, for improved stability when mounting a monitor holding arm, Dimensions: 290 x 6 x 478 mm (w x h x d), for use with Equipment Carts UG xxx</p>

	TM220	<p>27" FULL HD Monitor</p> <p>Screen resolution 1920 x 1080, image format 16:9, power supply 100-240 VAC, 50/60 Hz, 5 V DC (1 A), wall mount with VESA 100 adaptor</p> <p>Video inputs: 2x DVI, 3G-SDI, VGA, S-Video, Composite,</p> <p>Video outputs: DVI, 3G-SDI, Composite,</p> <p>including:</p> <p>External 24 VDC Power Supply Mains Cord Cable Cover 4x Mounting Screws M4</p>
	WM100	<p>21.5" KARL STORZ Touch Screen</p> <p>Screen resolution 1920 x 1080, image format 16:9, video inputs: DVI-I, DVI-D, Display Port 1.2 compliant, VGA, connectors: USB-B touch connector (called "USB touch" on I/O label), RS232 (D-Sub) touch connector (called "RS232 touch" on I/O label), RJ45 serial communication connector, power supply 100-240 VAC, 50/60 Hz, IP protection class IPX2, touch control with latex gloves, wall mount with VESA 100 adaptor,</p> <p>including:</p> <p>External 24 VDC Power Supply Mains Cord Potential Equalization Bolt Cable Cover, Instruction Manual, print version in English and other languages on USB flash drive</p>

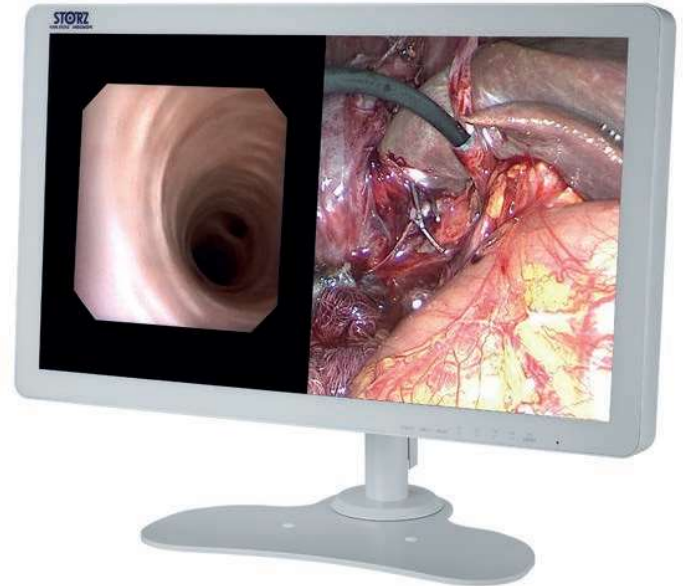
27-INCH FULL HD WIDESCREEN SURGICAL MONITOR

SPECIFICATIONS SHEET

HIGHLIGHTS

The TM220 surgical monitor is the ideal high-definition surgical display solution for your video needs. This monitor not only offers a sleek, bright image, it also provides versatility in viewing options.

- Fully flat design for safety and hygiene protects against splashes
- High brightness with an energy-efficient LED backlight
- View multiple signals on one screen with PoP (Picture-out-Picture) and PiP (Picture-in-Picture) functionality
- Adjust screens individually when displaying two signal sources side by side on the same screen



HARDWARE

FEATURE	DETAIL	ADDITIONAL NOTES
Panel	Type	Color (IPS)
	Backlight	LED
	Size	68.6 cm / 27.0"
	Native Resolution	1920 x 1080 (16:9 aspect ratio)
	Viewable Image Size (H x V)	598 x 336 mm
	Pixel Pitch	0.311 x 0.311 mm
	Display Colors	10-bit colors (SDI) : 1.07 billion (maximum) colors 8-bit colors: 16.77 million colors
	Viewing Angles (H / V, typical)	178° / 178°
	Brightness (typical)	900 cd/m ²
	Contrast Ratio (typical)	1000
	Response Time (typical)	14 ms (on / off)
Video Signals	Input Terminals	BNC (3G-SDI), DVI-D x 2 (HDCP 1.4), D-Sub 15 pin (mini), S-Video, BNC (Composite)
	Output Terminals	BNC (3G-SDI), DVI-D, S-Video, BNC (Composite)
	Digital Scanning Frequency (H / V)	15 - 75 kHz / 24 - 60 Hz
	Analog Scanning Frequency (H / V)	15 - 80 kHz / 24 - 85 Hz
	Sync Formats	Separate, Composite, Sync on green

Please note that product details are subject to change without prior notice.
For the most up-to-date product information, refer to the KARL STORZ website (www.karlstorz.com).

27-INCH FULL HD WIDESCREEN SURGICAL MONITOR

SPECIFICATIONS SHEET

HARDWARE

FEATURE	DETAIL	ADDITIONAL NOTES
Power	Power Requirements	AC 100 - 240 V: 50 / 60 Hz
	Maximum Power Consumption	79 W
Physical Specifications	Net Weight (Without Stand)	8.5 kg
	Hole Spacing (VESA Standard)	100 x 100 mm, M4, depth 5 - 9 mm
	Dimensions (net)	660 mm (W) x 400 mm (H) x 87 mm (D)
Environmental Requirements	Degree of Protection	IP45 (Front), IP32 (Rear)
Certifications & Standards	CE (Medical Device Directive), EN60601-1, ANSI/AAMI ES60601-1, CSA C22.2 No. 601-1, IEC60601-1, VCCI-A, FCC-A, CAN ICES-3(A), RCM, RoHS, China RoHS, WEEE, CCC, EAC, BIS	
FDA	Class I	

It is recommended to check the suitability of the product for the intended procedure prior to use.
Please note that the described products in this medium may not be available yet in all countries due to different regulatory requirements.

KARL STORZ SE & Co. KG
Dr.-Karl-Storz-Straße 34, 78532 Tuttlingen/Germany
Postbox 230, 78503 Tuttlingen/Germany
Phone: +49 (0)7461 708-0
Fax: +49 (0)7461 708-105
E-Mail: info@karlstorz.com
www.karlstorz.com



KARL STORZ Endoscopy-America, Inc.
2151 East Grand Avenue
El Segundo, CA 90245-5017, USA
Phone: +1 424 218-8100
Phone toll free: 800 421-0837 (US only)
Fax: +1 424 218-8525
Fax toll free: 800 321-1304 (US only)
E-Mail: communications@karlstorz.com

Caution: Federal (USA) law restricts this device to sale by or on the order of physician.

© 2021 KARL STORZ Endoscopy-America, Inc.

97208076 VIDEO 1 1.0 us 03/2021/SE-E-US

Equipment Cart



UG220

Equipment Cart

wide, high, rides on 4 antistatic dual wheels equipped with locking brakes 3 shelves, mains switch on top cover, central beam with integrated electrical subdistributors with 12 sockets, holder for power supplies, potential earth connectors and cable winding on the outside,

Dimensions:

Equipment cart: 830 x 1474 x 730 mm (w x h x d),

shelf: 630 x 510 mm (w x d),

caster diameter: 150 mm

including:

Base module equipment cart, wide

Cover equipment, equipment cart wide

Beam package equipment, equipment cart high
3x **Shelf,** wide

Drawer unit with lock, wide

2x **Equipment rail,** long

Camera holder



UG540

Monitor Swivel Arm,

height and side adjustable, can be turned to the left or the right side, swivel range 180°, overhang 780 mm, overhang from centre 1170 mm, load capacity max. 15 kg, with monitor fixation VESA 5/100, for usage with equipment carts UG xxx

UG540

Equipment Cart for Outpatient Hysteroscopy

This combination is suitable to be used in the outpatient setting and can be combined with the TELE PACK+ and ENDOMAT® SELECT.



UG803

Subrack for COR Mobile Stand, low, rides on 4 antistatic dual wheels, with locking brakes, low beam module incl. cable manager and handle, consisting of:

UG800

Base Module for COR Mobile Stand

UG801

Beam Module for COR Mobile Stand, Small

UG860

Drawer, narrow, for COR mobile stand



UG857

Monitor Module for COR Mobile Stand, VESA 75/100 monitor mount, load capacity for monitor module max. 18 kg

UG854

Stainless Steel Tube for COR Mobile Stand, for mounting matching accessories, diameter 25 mm, length 400 mm, for use with Top Cover Monitor Holder COR Mobile Stand UG811

UG811

Top Cover Monitor Holder, for COR mobile stand









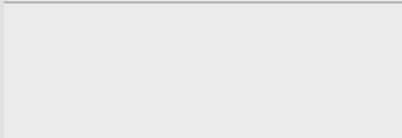
	<p>TZ 100</p>	<p>ZeroWire G2 Transmission Set, for wireless 2D and 3D video transmission, supports resolutions up to 1080p, 50/60 Hz, with DVI and 3G-SDI inputs including:</p> <p>Transmitter Receiver 2x VESA Holders 24"/26" 2x DVI-D Cables SDI Cable User Manual Installation Manual</p> <p>Note: Two TZ 001, TZ 002, TZ 003 or 9826 NB-ZW are required per ZeroWire G2 Video Transmission Set depending on the monitor.</p>
	<p>TZ 101</p>	<p>ZeroWire G2 Receiver, for wireless 2D and 3D video transmission, supports resolutions up to 1080p, 50/60 Hz, with DVI input</p>
	<p>TZ 102</p>	<p>ZeroWire G2 Transmitter, for wireless 2D and 3D video transmission, supports resolutions up to 1080p, 50/60 Hz, with DVI and 3G-SDI inputs</p>
	<p>9826 NB-ZW</p>	<p>ZeroWire Y-Cable, Y-cable for looping into the monitor power supply to power the ZeroWire transmitter or receiver. The adaptor cable is equipped with a 4-pin plug, a bifurcation to a 4-pin socket and a DC plug.</p> <p>Note: For use with ZeroWire G2 Transmission Set TZ 100 in conjunction with FULL HD Monitor 9826 NB, 26" 3D Monitor 9826 NB-3D, 26" 3D Monitor TM 263, 32" 3D Monitor TM 323 and 32" 3D Monitor TM 330</p>
	<p>TZ 001</p>	<p>ZeroWire G2 Power Supply, external 3-pin power supply, 24 V, 18 W, for direct connection to the video transmission system, for use with all monitors</p>

IMAGE1 S Camera System

IMAGE1 S



TC 200EN

TC200EN*

IMAGE1 S CONNECT, connect module, for use with up to 3 link modules, resolution 1920 x 1080 pixels, with integrated KARL STORZ-SCB and digital Image Processing Module, power supply 100–120 VAC/200–240 VAC, 50/60 Hz including:

Mains Cord, length 300 cm

DVI-D Connecting Cable, length 300 cm

SCB Connecting Cable, length 100 cm

USB Flash Drive, 32 GB, USB silicone keyboard, with touchpad, US

* Available in the following languages: DE, ES, FR, IT, PT, RU

Specifications:

HD video outputs	- 2x DVI-D - 1x 3G-SDI
Format signal outputs	1920 x 1080p, 50/60 Hz
LINK video inputs	3x
USB interface	4x USB, (2x front, 2x rear)
SCB interface	2x 6-pin mini-DIN

Power supply	100–120 VAC/200–240 VAC
Power frequency	50/60 Hz
Protection class	I, CF-Defib
Dimensions w x h x d	305 x 54 x 320 mm
Weight	2.1 kg

For use with IMAGE1 S
IMAGE1 S CONNECT Module TC200EN



TC 300

TC300

IMAGE1 S H3-LINK, link module, for use with IMAGE1 FULL HD three-chip camera heads, power supply 100–120 VAC/200–240 VAC, 50/60 Hz, **for use with IMAGE1 S CONNECT TC200EN**

including:

Mains Cord, length 300 cm

Link Cable, length 20 cm

Specifications:

Camera System	TC300 (H3-Link)
Supported camera heads/video endoscopes	TH100, TH101, TH102, TH103, TH104, TH106 (fully compatible with IMAGE1 S) 22220055-3, 22220056-3, 22220053-3, 22220060-3, 22220061-3, 22220054-3, 22220085-3 (compatible without IMAGE1 S technologies CLARA, CHROMA, SPECTRA*)
LINK video outputs	1x
Power supply	100–120 VAC/200–240 VAC
Power frequency	50/60 Hz
Protection class	I, CF-Defib
Dimensions (w x h x d)	305 x 54 x 320 mm
Weight	1.86 kg

* SPECTRA A: Not for sale in the U.S.

** SPECTRA B: Not for sale in the U.S.

IMAGE1 S Camera Heads



For use with IMAGE1 S Camera System

IMAGE1 S CONNECT Module TC200EN, IMAGE1 S H3-LINK Module TC300
and with all IMAGE1 HUB™ HD Camera Control Units



TH100

IMAGE1 S H3-Z Three-Chip FULL HD Camera Head, 50/60 Hz, IMAGE1 S compatible, progressive scan, soakable, gas- and plasma-sterilizable, with integrated Parfocal Zoom Lens, focal length $f = 15-31$ mm (2x), 2 freely programmable camera head buttons, for use with IMAGE1 S and IMAGE1 HUB™ HD/HD

Specifications:

IMAGE1 FULL HD Camera Heads	IMAGE1 S H3-Z
Product no.	TH100
Image sensor	3x $\frac{1}{3}$ " CCD chip
Dimensions w x h x d	39 x 49 x 114 mm
Weight	270 g
Optical interface	integrated Parfocal Zoom Lens, $f = 15-31$ mm (2x)
Min. sensitivity	F 1.4/1.17 Lux
Grip mechanism	standard eyepiece adaptor
Cable	non-detachable
Cable length	300 cm



TH104

TH104

IMAGE1 S H3-ZA Three-Chip FULL HD Camera Head, 50/60 Hz, IMAGE1 S compatible, **autoclavable**, progressive scan, soakable, gas- and plasma-sterilizable, with integrated Parfocal Zoom Lens, focal length $f = 15-31$ mm (2x), 2 freely programmable camera head buttons, for use with IMAGE1 S and IMAGE1 HUB™ HD/HD

Specifications:

IMAGE1 FULL HD Camera Heads	IMAGE1 S H3-ZA
Product no.	TH104
Image sensor	3x $\frac{1}{3}$ " CCD chip
Dimensions w x h x d	39 x 49 x 100 mm
Weight	299 g
Optical interface	integrated Parfocal Zoom Lens, $f = 15-31$ mm (2x)
Min. sensitivity	F 1.4/1.17 Lux
Grip mechanism	standard eyepiece adaptor
Cable	non-detachable
Cable length	300 cm

LED Cold Light Fountains

POWER LED 175 SCB, LED NOVA 150



	20 1614 01-1 Cold Light Fountain POWER LED 175 SCB	20 1612 01 Cold Light Fountain LED NOVA 150
	with integrated KARL STORZ-SCB, high-performance LED module and one KARL STORZ light outlet	high-performance LED module, with one KARL STORZ light outlet
including:	Mains Cord SCB Connecting Cable	Mains Cord

Specifications:

Illumination technology	LED	
Color temperature	approx. 6400 K	
Average lamp service life	30,000 h	
Light intensity adjustment	automatic via SCB manual via SCB manual via membrane keyboard	manual
Unit communication	KARL STORZ Communication Bus (2x SCB)	—
Power consumption	110 VA	60 VA
Power supply	110 – 240 VAC	100 – 240 VAC
Power frequency	50/60 Hz	
Dimensions w x h x d	305 x 110 x 233 mm	305 x 84 x 238 mm
Weight	4 kg	2.3 kg
Cleaning	wipe disinfection	
Protection class	1	
Degree of safety	CF	

Fiber Optic Light Cables

for Cold Light Fountains



Fiber Optic Light Cable with Straight Connector

- 495 NE **Fiber Optic Light Cable**, diameter 4.8 mm, length 300 cm
- 495 NCS **Fiber Optic Light Cable**, extremely heat-resistant, diameter 4.8 mm, length 250 cm
- NEW** 495 NCSC **Fiber Optic Light Cable**, extremely heat-resistant, with safety locking device, diameter 4.8 mm, length 250 cm
- 495 NB **Fiber Optic Light Cable**, diameter 4.8 mm, length 180 cm
- 495 ND **Fiber Optic Light Cable**, diameter 3.5 mm, length 300 cm
- 495 NA **Fiber Optic Light Cable**, diameter 3.5 mm, length 230 cm
- NEW** 495 NAC **Fiber Optic Light Cable**, with safety locking device, diameter 3.5 mm, length 230 cm
- 495 NL **Fiber Optic Light Cable**, diameter 3.5 mm, length 180 cm
- 495 NTA **Fiber Optic Light Cable**, diameter 2.5 mm, length 230 cm
- 495 NT **Fiber Optic Light Cable**, diameter 2.5 mm, length 180 cm
- NEW** 495 TIP **Fiber Optic Light Cable**, highly heat resistant, diameter 4.8 mm, length 300 cm, optimized for 3D TIPCAM®1 and TIPCAM®



Fiber Optic Light Cable with 90° Deflection to the Light Source

- 495 NWL **Fiber Optic Light Cable**, with 90° deflection to the cold light fountain on the fountain side, diameter 3.5 mm, length 300 cm
- 495 NWM **Fiber Optic Light Cable**, with 90° deflection to the cold light fountain on the fountain side, diameter 3.5 mm, length 230 cm
- 495 NW **Fiber Optic Light Cable**, with 90° deflection to the cold light fountain on the fountain side, diameter 3.5 mm, length 180 cm
- 495 NTX **Fiber Optic Light Cable**, with 90° deflection to the cold light fountain on the fountain side, diameter 2.5 mm, length 230 cm
- 495 NTW **Fiber Optic Light Cable**, with 90° deflection to the cold light fountain on the fountain side, diameter 2.5 mm, length 180 cm



495 NVC



495 NV/NVL/NVB

Fiber Optic Light Cable with 90° Deflection to the Instrument

- NEW** 495 NVC **Fiber Optic Light Cable**, with 90° deflection to the instrument, very narrow radius of curvature, diameter 4.8 mm, length 300 cm
- 495 NVB **Fiber Optic Light Cable**, with 90° deflection to the instrument, diameter 4.8 mm, length 300 cm
- 495 NVL **Fiber Optic Light Cable**, with 90° deflection to the instrument, diameter 3.5 mm, length 300 cm
- 495 NV **Fiber Optic Light Cable**, with 90° deflection to the instrument, diameter 3.5 mm, length 230 cm



Light Adaptor, angled 90°

- 495 EW **Light Adaptor**, angled 90°, diameter 4.8 mm, free rotatable, to connect with standard telescopes

Adaptor for connecting KARL STORZ fiber optic light cables with endoscopes and light sources from other manufacturers, see page TP 132

ENDOFLATOR® 50 SCB



UI500S1

ENDOFLATOR® 50 SCB,
integrated SCB module,
power supply 100–40 VAC, 50/60 Hz
including:

ENDOFLATOR® 50 SCB

SCB Connecting Cable, length 100 cm

Universal Wrench

Heated Insufflation Tubing Set, with gas filter,
sterile, for single use, package of 3*

HiCap® Trocar, size 11 mm

**Subject to the customer's application-specific
requirements additional accessories must be
ordered separately.**

HAMOU® ENDOMAT® with KARL STORZ SCB

Suction and Irrigation System



26331101-1 HAMOU® ENDOMAT® SCB,
power supply 100–240 VAC, 50/60 Hz
including:

Mains Cord

5x **HYST Tubing Set***, for single use

5x **LAP Tubing Set***, for single use

SCB Connecting Cable, length 100 cm

VACUsafe Promotion Pack Suction*, 2 l

**Subject to the customer's application-specific
requirements additional accessories must be
ordered separately.**

8.5 Technische Daten

8.5 Technical data

8.5 Datos técnicos

ENDOFLATOR® 50	ENDOFLATOR® 50	ENDOFLATOR® 50	UI 500
Netzversorgungsspannung	Line voltage	Tensión de alimentación de la red	100...240 V~
Netzfrequenz	Line frequency	Frecuencia de la red	50/60 Hz
Netzicherung	Line fuse	Fusible para la red	2 x T 2.5 AH 250V
Mittlere Leistungsaufnahme bei Flow 40 l/min (Eingangsdruk 60 bar)	Average power consumption with flow of 40 l/min (input pressure 60 bar)	Consumo medio de potencia con un flujo de 40 l/min (presión de entrada 60 bares)	240 VAC; 230 W
Maximale Stromaufnahme	Maximum current consumption	Consumo de corriente máximo	100 VAC; 130 W
Gaseingang (maximaler Druck)	Gas inlet (maximum pressure)	Entrada de gas (presión máxima)	240 VAC; 1.8 A
Temperatur Patientenschlauchheizung	Temperature patient tube heating	Temperatura calefactor del tubo flexible para paciente	100 VAC; 1.3 A
Betriebsart »PÄDIATRIE«	‘PEDIATRICS’ mode	Modo de servicio “PEDIATRIA”	100 bar
Intrakavitärer Druck	Intracavitary pressure	Presión intracavitaria	37 °C
Flow	Flow	Flujo	1...15 mmHg (Auflösung/resolución: 1 mmHg)
Insufflationsdruck	Insufflation pressure	Presión de insuflación	0.1...15 l/min (Auflösung/resolución/resolución: 0.1 l/min; 0.1...2 l/min; 0.5 l/min; 10...15 l/min; 1 l/min)
Betriebsart »HIGH FLOW«	‘HIGH FLOW’ mode	Modo de servicio “HIGH FLOW”	max./máx. 30 mmHg
Intrakavitärer Druck	Intracavitary pressure	Presión intracavitaria	1...30 mmHg (Auflösung/resolución: 1 mmHg)
Flow	Flow	Flujo	1...50 l/min (Auflösung/resolución: 1 l/min)
Insufflationsdruck	Insufflation pressure	Presión de insuflación	max./máx. 50 mmHg
Abmessungen (B x H x T)	Dimensions (W x H x D)	Dimensiones (an x al x pr)	305 mm x 164 mm x 315 mm
Gewicht	Weight	Peso	7.8 kg
Betriebsbedingungen:	Operating conditions:	Condiciones de servicio:	
Luftfeuchtigkeit (rel. Feuchte, nicht kondensierend)	Humidity (rel. humidity, non-condensing)	Humedad del aire (humedad relativa, sin condensación)	15 %...85 %
Temperatur	Temperature	Temperatura	10...35 °C
Max. Betriebshöhe	Max. operating altitude	Altura máxima de servicio	3000 m
Lager-/Transportbedingungen:	Storage/transport conditions:	Cond. de almacenamiento/transporte:	
Luftfeuchtigkeit (rel. Feuchte, nicht kondensierend)	Humidity (rel. humidity, non-condensing)	Humedad del aire (humedad relativa, sin condensación)	5 %...95 %
Temperatur	Temperature	Temperatura	-10 °C...60 °C
Atmosphärischer Druck	Atmospheric pressure	Presión atmosférica	+500hPa...+1080hPa



Insufflation Tube,
sterilizable, inner diameter 9 mm, length 250 cm, for use with ENDOFLATOR® 40 UI 400 or ENDOFLATOR® 50 UI 500



20400027



CO2 High Pressure Tube,
American connection/German connection, length 102 cm



Insufflation Tubing Sets, Gas Filters and Accessories



Special Features:

- Protects patients and equipment against contamination
- Gas flow of up to 50 l/min
- Preheated gas for better view and patient comfort (031210-10)

STERILE

For use with electronic ENDOFLATOR®, THERMOFLATOR®, ENDOFLATOR® 40 and ENDOFLATOR® 50



031122-25



031200-10



031210-10

- | | |
|-----------|---|
| 031122-25 | Gas Filter , with ISO connectors, hydrophobic on both sides, sterile, for single use, package of 25, for use with insufflation units with a maximum gas flow of 50 l/min (Electronic ENDOFLATOR®, THERMOFLATOR®, ENDOFLATOR® 40 and ENDOFLATOR® 50) |
| 031200-10 | Insufflation Tubing Set with Gas Filter , length 300 cm, hydrophobic on both sides, sterile, for single use, package of 10, for use with insufflation units with a maximum gas flow of 50 l/min (Electronic ENDOFLATOR®, THERMOFLATOR®, ENDOFLATOR® 40 and ENDOFLATOR® 50) |
| 031210-10 | Insufflation Tubing Set with Gas Filter , length 300 cm, heatable, hydrophobic on both sides, sterile, for single use, package of 10, for use with ENDOFLATOR® 50 |

UH 300



AUTOCON® III 300,
power supply 220 – 240 VAC, 50/60 Hz, including mains cord

HF connecting sockets unipolar:

1x 3-pin US type

1x 5 mm connector KARL STORZ/Erbe VIO

HF connecting sockets bipolar:

1x 2-pin US type (28.58)

2x KARL STORZ/Erbe VIO

Connecting socket:

Neutral electrode 2-pol

Can be integrated into OR1™ with KARL STORZ OR1™ SCB control WU 300
System requirements: SCB R-UI Software Release 20090001-46 or higher



Image View – UH 300



Close

Image View – 400 A



Close



Two-Pedal HF Footswitch,
with button for switchover function, for use with HF generators



Optional Accessories

for AUTOCON® II 400 SCB and AUTOCON® II 80

			for use with	
			AUTOCON® II 400 SCB	AUTOCON® II 80
	20 0178 31	Three-Pedal Footswitch , for use with AUTOCON® II 400 SCB	●	—
	20 0178 30	Two-Pedal Footswitch , for use with AUTOCON® II 400 SCB and AUTOCON® II 200	●	—
	20 0178 32	One-Pedal Footswitch , for activating coagulation, for use with AUTOCON® II 400 SCB and AUTOCON® II 200	●	—
	20 0178 34	Two-Pedal Footswitch , digital, one-stage, for use with AUTOCON® II 80	—	●
	20 0178 33	One-Pedal Footswitch , digital, one-stage, for use with AUTOCON® II 80	—	●
	27805	Neutral Electrode , of conductive silicone, with 2 rubber ties for fastening, contact surface A = 500 cm², for use with Connecting Cable 27806	●	●
	860021 E	Neutral Electrode , of conductive silicone, with 1 rubber tie for fastening, contact surface A = 187 cm², for use with Connecting Cable 27806	—	●
	27806	Neutral Electrode Connecting Cable , for Neutral Electrodes 27805 and 860021 E, length 400 cm	-111 -115 -122 -125	●
	27806 UR	Neutral Electrode Connecting Cable , for use with Neutral Electrode 27805	-112 -116 -122 -125	●
	27806 US	Neutral Electrode Connecting Cable , for use with Neutral Electrode 27802	-112 -116 -122 -125	●
	27802	Neutral Electrode , for single use, contact surface divided into two, A = 169 cm², package of 50, Connecting Cable 27806 US required	●	●
	27801	Connecting Cable , for connecting Neutral Electrode 27802, length 500 cm	-111 -115 -122 -125	●
	26 5200 43	Electrode Handle , with 2 buttons for activating the unipolar generator, yellow button: unipolar cutting, blue button: unipolar coagulation, Connecting Cable 26 5200 45	●	●
	26 5200 45	High Frequency Cable , for Electrode Handle 26 5200 43, length 400 cm	-111 -115 -122 -125	●
	26 5200 46	Electrode Handle , without buttons, with integrated connecting cable, length 300 cm	-111 -115 -122 -125	●

Accessories

Unipolar High Frequency Cords

Unipolar High Frequency Cords



KARL STORZ High Frequency
Instrument Surgical Units

	26002 M	Unipolar High Frequency Cord , with 4 mm plug for models KARL STORZ, Erbe type T, older models and Ellman, length 300 cm
	26004 M	Unipolar High Frequency Cord , with 4 mm plug for models Berchtold and Martin, length 300 cm
	26005 M	Unipolar High Frequency Cord , with 5 mm plug for AUTOCON® II 400 SCB system (111, 115, 122, 125), AUTOCON® II 200, AUTOCON® II 80, KARL STORZ AUTOCON® system (50, 200, 350) and Erbe type ICC, length 300 cm
		
	26006 M	Unipolar High Frequency Cord , with 8 mm plug for models KARL STORZ AUTOCON® II 400 SCB system (112, 116) and Valleylab, length 300 cm

Please note: All high frequency cords of this page are delivered with a length of 300 cm. If a length of 500 cm is requested please add letter **L** to the part number, e. g. 26002 **ML**, 26176 **LVL**.

Skull Base and Endoscopic Pituitary Surgery

Accessories, High Frequency Cords,
for use with TAKE-APART® bipolar forceps



Bipolar High Frequency Cords

KARL STORZ High Frequency
Instrument Surgical Units

	26176 LE	Bipolar High Frequency Cord , for AUTOCON® II 400 SCB system (111, 113, 115, 122, 125), AUTOCON® II 200, AUTOCON® II 80, KARL STORZ Coagulator 26021 B/C/D, 860021 B/C/D, 27810 B/C/D, 28810 B/C/D, AUTOCON® system (50, 200, 350), Erbe-Coagulator, T and ICC series, length 300 cm
	26176 LM	Bipolar High Frequency Cord , for Martin and Berchtold coagulators, length 300 cm
	26176 L	Bipolar High Frequency Cord , with 2 x 4 mm banana plug for KARL STORZ Coagulator 26020 XA/XB and Ellman, length 300 cm
	26176 LA	Bipolar High Frequency Cord , with 2 x 4 mm banana plug for KARL STORZ Coagulator 26020 XA/XB and Valleylab, length 300 cm
	26176 LV	Bipolar High Frequency Cord , for KARL STORZ AUTOCON® II 400 SCB system (112, 114, 116, 122, 125) and Valleylab coagulators, length 300 cm

High Frequency Surgical Units AUTOCON® see chapter 12