



*Orthopädie  
Instrumente*

*Orthopedic  
Instruments*

*Instrumentos  
para ortopedia*

*Strumenti  
per ortopedia*

**REDA**  
INSTRUMENTE GMBH



**Minifragments Cortical Screws 2.0 mm**

**Minifragment Kortikalisschrauben 2.0 mm**

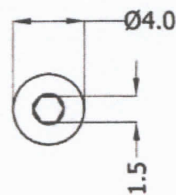
**Mini vis corticales 2.0 mm**

**2.0 ø Mini Cortical Screws:** To be used in interfragmental compression in strong cortical bone of the metatarsals, metacarpals and proximal phalanx. Buttress thread from provides enhanced pull-out resistance in cortical bone. Also used for fixation of mini fragment plates.

**Material:** Certified Stainless Steel according to ASTM F.138 - ISO 5832/1. Certified Titanium alloy according to ASTM F.136 - ISO 5832/3.



2.0



Thread diam.	2.0	2.0	2.0	2.0
Core diam.	1.3	1.3	1.3	1.3
Pitch	0.6	0.6	0.6	0.6
Head diam.	4.0	4.0	4.0	4.0
Hex. Socket	1.5	1.5	1.5	1.5
	Stainless Steel	Stainless Steel Self-Tapping	Titanium	Titanium Self-Tapping
Length mm				
6	ROT-102-006	ROT-102-006 S	ROT-102-006 T	ROT-102-006 TS
8	ROT-102-008	ROT-102-008 S	ROT-102-008 T	ROT-102-008 TS
10	ROT-102-010	ROT-102-010 S	ROT-102-010 T	ROT-102-010 TS
12	ROT-102-012	ROT-102-012 S	ROT-102-012 T	ROT-102-012 TS
14	ROT-102-014	ROT-102-014 S	ROT-102-014 T	ROT-102-014 TS
16	ROT-102-016	ROT-102-016 S	ROT-102-016 T	ROT-102-016 TS
18	ROT-102-018	ROT-102-018 S	ROT-102-018 T	ROT-102-018 TS
20	ROT-102-020	ROT-102-020 S	ROT-102-020 T	ROT-102-020 TS
22	ROT-102-022	ROT-102-022 S	ROT-102-022 T	ROT-102-022 TS
24	ROT-102-024	ROT-102-024 S	ROT-102-024 T	ROT-102-024 TS
26	ROT-102-026	ROT-102-026 S	ROT-102-026 T	ROT-102-026 TS
28	ROT-102-028	ROT-102-028 S	ROT-102-028 T	ROT-102-028 TS
30	ROT-102-030	ROT-102-030 S	ROT-102-030 T	ROT-102-030 TS
32	ROT-102-032	ROT-102-032 S	ROT-102-032 T	ROT-102-032 TS
34	ROT-102-034	ROT-102-034 S	ROT-102-034 T	ROT-102-034 TS
36	ROT-102-036	ROT-102-036 S	ROT-102-036 T	ROT-102-036 TS
38	ROT-102-038	ROT-102-038 S	ROT-102-038 T	ROT-102-038 TS

**Cancellous Screws 3.5 mm**

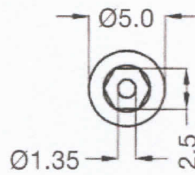
**Durchbohrte Schrauben 3.5 mm**

**Vis spongieuses 3.5 mm**

**3.5 ø Cancellous Screws:** The main indication for using cancellous screws is when the cortex is thinner than 3.5 mm.

The short threaded screws are used for fractures of the femoral neck in adolescents; separated epiphysis and for certain fractures of the tibial plateau. The long threaded screws are used for fractures in the vicinity of joints. The head has a hexagonal socket and the screw is inserted by using screwdriver.

**Material:** Certified Stainless Steel according to ASTM F.138 - ISO 5832/1. Certified Titanium alloy according to ASTM F.136 - ISO 5832/3.



3.5

Thread diam.	3.5	3.5	3.5	3.5
Core diam.	2.5	2.5	2.5	2.5
Pitch	1.25	1.25	1.25	1.25
Head diam.	5.0	5.0	5.0	5.0
Hex. Socket	2.5	2.5	2.5	2.5
Cannulation	1.35	1.35	1.35	1.35
	<b>Stainless Steel</b>	<b>Titanium</b>	<b>Stainless Steel</b>	<b>Titanium</b>
	<b>Short Thread</b>	<b>Short Thread</b>	<b>Fully Threaded</b>	<b>Fully Threaded</b>
	<b>Self-Tapping</b>	<b>Self-Tapping</b>	<b>Self-Tapping</b>	<b>Self-Tapping</b>
Length mm				
10	ROT-129-010 S	ROT-129-010 TS	ROT-128-010 S	ROT-128-010 TS
12	ROT-129-012 S	ROT-129-012 TS	ROT-128-012 S	ROT-128-012 TS
14	ROT-129-014 S	ROT-129-014 TS	ROT-128-014 S	ROT-128-014 TS
16	ROT-129-016 S	ROT-129-016 TS	ROT-128-016 S	ROT-128-016 TS
18	ROT-129-018 S	ROT-129-018 TS	ROT-128-018 S	ROT-128-018 TS
20	ROT-129-020 S	ROT-129-020 TS	ROT-128-020 S	ROT-128-020 TS
22	ROT-129-022 S	ROT-129-022 TS	ROT-128-022 S	ROT-128-022 TS
24	ROT-129-024 S	ROT-129-024 TS	ROT-128-024 S	ROT-128-024 TS
26	ROT-129-026 S	ROT-129-026 TS	ROT-128-026 S	ROT-128-026 TS
28	ROT-129-028 S	ROT-129-028 TS	ROT-128-028 S	ROT-128-028 TS
30	ROT-129-030 S	ROT-129-030 TS	ROT-128-030 S	ROT-128-030 TS
32	ROT-129-032 S	ROT-129-032 TS	ROT-128-032 S	ROT-128-032 TS
34	ROT-129-034 S	ROT-129-034 TS	ROT-128-034 S	ROT-128-034 TS
36	ROT-129-036 S	ROT-129-036 TS	ROT-128-036 S	ROT-128-036 TS
38	ROT-129-038 S	ROT-129-038 TS	ROT-128-038 S	ROT-128-038 TS
40	ROT-129-040 S	ROT-129-040 TS	ROT-128-040 S	ROT-128-040 TS
42	ROT-129-042 S	ROT-129-042 TS	ROT-128-042 S	ROT-128-042 TS
44	ROT-129-044 S	ROT-129-044 TS	ROT-128-044 S	ROT-128-044 TS
46	ROT-129-046 S	ROT-129-046 TS	ROT-128-046 S	ROT-128-046 TS
48	ROT-129-048 S	ROT-129-048 TS	ROT-128-048 S	ROT-128-048 TS
50	ROT-129-050 S	ROT-129-050 TS	ROT-128-050 S	ROT-128-050 TS





4.5

**Cancellous Screws 4.5 mm**

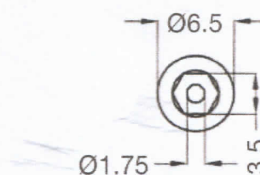
**Durchbohrte Schrauben 4.5 mm**

**Vis spongieuses 4.5 mm**

**4.5 ø Cancellous Screws:** The main indication for using cancellous screws is when the cortex is thinner than 3.5 mm.

The short threaded screws are used for fractures of the femoral neck in adolescents; separated epiphysis and for certain fractures of the tibial plateau. The long threaded screws are used for fractures in the vicinity of joints. The head has a hexagonal socket and the screw is inserted by using screwdriver.

**Material:** Certified Stainless Steel according to ASTM F.138 - ISO 5832/1. Certified Titanium alloy according to ASTM F.136 - ISO 5832/3.



Thread diam.	4.5	4.5	4.5	4.5
Core diam.	3.2	3.2	3.2	3.2
Pitch	1.75	1.75	1.75	1.75
Head diam.	6.5	6.5	6.5	6.5
Hex. Socket	3.5	3.5	3.5	3.5
Cannulation	1.75	1.75	1.75	1.75
	<b>Stainless Steel</b>	<b>Titanium</b>	<b>Stainless Steel</b>	<b>Titanium</b>
	<b>Short Thread</b>	<b>Short Thread</b>	<b>Fully Threaded</b>	<b>Fully Threaded</b>
	<b>Self-Tapping</b>	<b>Self-Tapping</b>	<b>Self-Tapping</b>	<b>Self-Tapping</b>
Length mm				
20	ROT-132-020 S	ROT-132-020 TS	ROT-133-020 S	ROT-133-020 TS
22	ROT-132-022 S	ROT-132-022 TS	ROT-133-022 S	ROT-133-022 TS
24	ROT-132-024 S	ROT-132-024 TS	ROT-133-024 S	ROT-133-024 TS
26	ROT-132-026 S	ROT-132-026 TS	ROT-133-026 S	ROT-133-026 TS
28	ROT-132-028 S	ROT-132-028 TS	ROT-133-028 S	ROT-133-028 TS
30	ROT-132-030 S	ROT-132-030 TS	ROT-133-030 S	ROT-133-030 TS
32	ROT-132-032 S	ROT-132-032 TS	ROT-133-032 S	ROT-133-032 TS
34	ROT-132-034 S	ROT-132-034 TS	ROT-133-034 S	ROT-133-034 TS
36	ROT-132-036 S	ROT-132-036 TS	ROT-133-036 S	ROT-133-036 TS
38	ROT-132-038 S	ROT-132-038 TS	ROT-133-038 S	ROT-133-038 TS
40	ROT-132-040 S	ROT-132-040 TS	ROT-133-040 S	ROT-133-040 TS
42	ROT-132-042 S	ROT-132-042 TS	ROT-133-042 S	ROT-133-042 TS
44	ROT-132-044 S	ROT-132-044 TS	ROT-133-044 S	ROT-133-044 TS
46	ROT-132-046 S	ROT-132-046 TS	ROT-133-046 S	ROT-133-046 TS
48	ROT-132-048 S	ROT-132-048 TS	ROT-133-048 S	ROT-133-048 TS
50	ROT-132-050 S	ROT-132-050 TS	ROT-133-050 S	ROT-133-050 TS
52	ROT-132-052 S	ROT-132-052 TS	ROT-133-052 S	ROT-133-052 TS
54	ROT-132-054 S	ROT-132-054 TS	ROT-133-054 S	ROT-133-054 TS
56	ROT-132-056 S	ROT-132-056 TS	ROT-133-056 S	ROT-133-056 TS
60	ROT-132-060 S	ROT-132-060 TS	ROT-133-060 S	ROT-133-060 TS
64	ROT-132-064 S	ROT-132-064 TS	ROT-133-064 S	ROT-133-064 TS
68	ROT-132-068 S	ROT-132-068 TS	ROT-133-068 S	ROT-133-068 TS
72	ROT-132-072 S	ROT-132-072 TS	ROT-133-072 S	ROT-133-072 TS



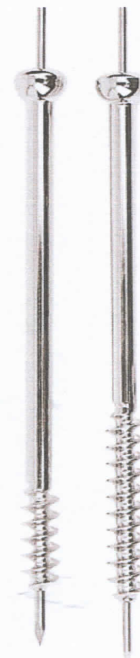
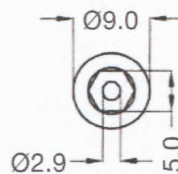
**Cancellous Screws 7.3 mm**

**Durchbohrte Schrauben 7.3 mm**

**Vis spongieuses 7.3 mm**

**7.3 ø Cancellous Screws:** The main indication for using cancellous screws is when the cortex is thinner than 3.5 mm. The short threaded screws (16 mm) are used for fractures of the femoral neck in adolescents; separated epiphysis and for certain fractures of the tibial plateau. The long threaded screws (32 mm) are used for fractures in the vicinity of joints. The head has a hexagonal socket and the screw is inserted by using screwdriver.

**Material:** Certified Stainless Steel according to ASTM F.138 - ISO 5832/1. Certified Titanium alloy according to ASTM F.136 - ISO 5832/3.



7.3

Thread diam.	7.3	7.3	7.3	7.3
Core diam.	4.8	4.8	4.8	4.8
Pitch	2.75	2.75	2.75	2.75
Head diam.	9.0	9.0	9.0	9.0
Hex. Socket	5.0	5.0	5.0	5.0
Cannulation	2.9	2.9	2.9	2.9
	Stainless Steel	Titanium	Stainless Steel	Titanium
	Short Thread 16 mm	Short Thread 16 mm	Thread 32 mm	Thread 32 mm
	Self-Tapping	Self-Tapping	Self-Tapping	Self-Tapping
Length mm				
30	ROT-138-030 S	ROT-138-030 TS		
35	ROT-138-035 S	ROT-138-035 TS		
40	ROT-138-040 S	ROT-138-040 TS		
45	ROT-138-045 S	ROT-138-045 TS	ROT-139-045 S	ROT-139-045 TS
50	ROT-138-050 S	ROT-138-050 TS	ROT-139-050 S	ROT-139-050 TS
55	ROT-138-055 S	ROT-138-055 TS	ROT-139-055 S	ROT-139-055 TS
60	ROT-138-060 S	ROT-138-060 TS	ROT-139-060 S	ROT-139-060 TS
65	ROT-138-065 S	ROT-138-065 TS	ROT-139-065 S	ROT-139-065 TS
70	ROT-138-070 S	ROT-138-070 TS	ROT-139-070 S	ROT-139-070 TS
75	ROT-138-075 S	ROT-138-075 TS	ROT-139-075 S	ROT-139-075 TS
80	ROT-138-080 S	ROT-138-080 TS	ROT-139-080 S	ROT-139-080 TS
85	ROT-138-085 S	ROT-138-085 TS	ROT-139-085 S	ROT-139-085 TS
90	ROT-138-090 S	ROT-138-090 TS	ROT-139-090 S	ROT-139-090 TS
95	ROT-138-095 S	ROT-138-095 TS	ROT-139-095 S	ROT-139-095 TS
100	ROT-138-100 S	ROT-138-100 TS	ROT-139-100 S	ROT-139-100 TS
105	ROT-138-105 S	ROT-138-105 TS	ROT-139-105 S	ROT-139-105 TS
110	ROT-138-110 S	ROT-138-110 TS	ROT-139-110 S	ROT-139-110 TS
115	ROT-138-115 S	ROT-138-115 TS	ROT-139-115 S	ROT-139-115 TS
120	ROT-138-120 S	ROT-138-120 TS	ROT-139-120 S	ROT-139-120 TS
125	ROT-138-125 S	ROT-138-125 TS	ROT-139-125 S	ROT-139-125 TS
130	ROT-138-130 S	ROT-138-130 TS	ROT-139-130 S	ROT-139-130 TS
135	ROT-138-135 S	ROT-138-135 TS	ROT-139-135 S	ROT-139-135 TS
140	ROT-138-140 S	ROT-138-140 TS	ROT-139-140 S	ROT-139-140 TS
145	ROT-138-145 S	ROT-138-145 TS	ROT-139-145 S	ROT-139-145 TS
150	ROT-138-150 S	ROT-138-150 TS	ROT-139-150 S	ROT-139-150 TS



**Washers for screws**

**Unterlagscheibe für Schrauben**

**Material:** Certified Stainless Steel according to ASTM F.138 - ISO 5832/1. Certified Titanium alloy according to ASTM F.136 - ISO 5832/3.

	<b>Outside diameter</b> <b>Aussendurchmesser</b>	<b>Washer Thickness</b> <b>Scheibenstärke</b>		
For screws / für Schrauben / pour Vis Ø 4.5 mm / Ø 6.5 mm / Ø 7.0 mm / Ø 7.3 mm				
Stainless Steel	13.00 mm	1.5 mm	<b>ROT-199-130</b>	 <b>13 mm</b>
Titanium	13.00 mm	1.5 mm	<b>ROT-199-130 T</b>	
For cannulated screws / für durchbohrte Schrauben Ø 4.5 mm / Ø 6.5 mm / Ø 7.0 mm / Ø 7.3 mm				
Stainless Steel	10.00 mm	1.0 mm	<b>ROT-199-100</b>	 <b>10 mm</b>
Titanium	10.00 mm	1.0 mm	<b>ROT-199-100 T</b>	
For screws / für Schrauben / pour Vis Ø 2.7 mm / Ø 3.5 mm / Ø 4.0 mm				
Stainless Steel	7.00 mm	0.8 mm	<b>ROT-199-070</b>	 <b>7 mm</b>
Titanium	7.00 mm	0.8 mm	<b>ROT-199-070 T</b>	
For screws / für Schrauben / pour Vis Ø 1.5 mm / Ø 2.0 mm				
Stainless Steel	4.50 mm	0.6 mm	<b>ROT-199-045</b>	 <b>4.5 mm</b>
Titanium	4.50 mm	0.6 mm	<b>ROT-199-045 T</b>	
Nut for cortical screws / Mutter für Kortikalisschrauben Ø 4.5 mm				
Stainless Steel	11.00 mm		<b>ROT-198-110</b>	 <b>11 mm</b>
Titanium	11.00 mm		<b>ROT-198-110 T</b>	



Schanz Screws

Schanz'sche Schrauben

Vis de Schanz

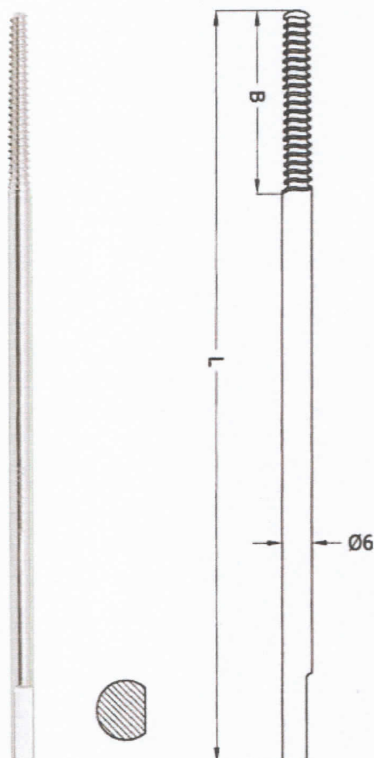
**Indication:** Fracture fixation. May also be used with REDA Circular external device and Tipofix Dynamic Axial fixators. Schanz are supplied with trocar point and three-sided end fits the Universal chuck.

**Material:** Certified Stainless Steel according to ASTM F.138 - ISO 5832/1.



Ref. No Stainless Steel	Diam	Thread Length mm	Length mm
ROT-415150-30	3.0	30	150
ROT-415130-35	3.5	30	130
ROT-415150-35	3.5	35	150
ROT-415180-35	3.5	35	180
ROT-415130-40	4.0	30	130
ROT-415150-40	4.0	35	150
ROT-415180-40	4.0	40	180
ROT-415130-45	4.5	35	130
ROT-415150-45	4.5	45	150
ROT-415180-45	4.5	45	180
ROT-415130-50	5.0	35	130
ROT-415150-50	5.0	45	150
ROT-415180-50	5.0	45	180
ROT-415200-50	5.0	45	200
ROT-415220-50	5.0	45	220





## Schanz Screws with cortical thread

## Schanz'sche Schrauben mit Kortikalisgewinde

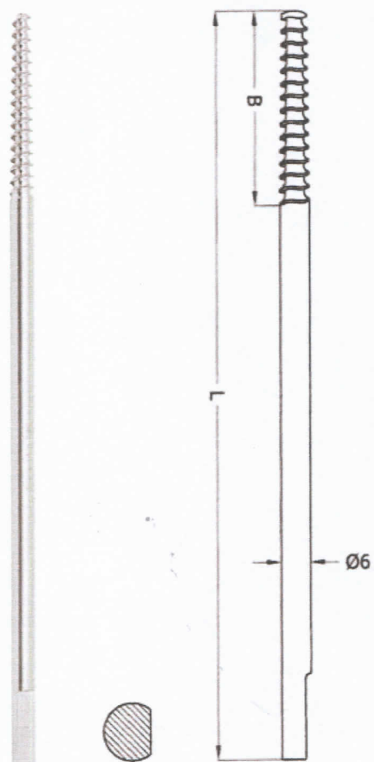
## Vis de Schanz à filetage cortical

**Indication:** Fracture fixation. May also be used specially with Tipofix Dynamic Axial fixators. These schanz screws are supplied with three-sided end fits the Universal chuck.

**Material:** Certified Stainless Steel according to ASTM F.138 - ISO 5832/1

Ref. No Stainless Steel	Diam	Thread Length mm	Length mm
ROT-416130-60	6.0	30	130
ROT-416150-60	6.0	45	150
ROT-416180-60	6.0	45	180
ROT-416200-60	6.0	45	200
ROT-416220-60	6.0	55	220

## Section of Schanz intramedullary screws system with cancellous thread



## Schanz Screws with cancellous thread

## Schanz'sche Schrauben mit Spongiosagewinde

## Vis de Schanz à filetage spongieux

**Indication:** Fracture fixation. May also be used specially with Tipofix Dynamic Axial fixators. These schanz screws are supplied with three-sided end fits the Universal chuck.

**Material:** Certified Stainless Steel according to ASTM F.138 - ISO 5832/1

Ref. No Stainless Steel	Diam	Thread Length mm	Length mm
ROT-416130-60 C	6.0	30	130
ROT-416150-60 C	6.0	45	150
ROT-416180-60 C	6.0	45	180
ROT-416200-60 C	6.0	45	200
ROT-416220-60 C	6.0	55	220
ROT-416250-60 C	6.0	70	250



Kirschner Drill wires with Trocar point / round shaft end

Kirschner Bohrdrähte mit Trokarspitze / rundes Schaftende

Alambres Kirschner Punta Trocar con extremo redondo

Perforatori filiformi Kirschner con Punta trequarti con estremità rotonda

**Indication:** Use in setting fractures. **Material:** Certified Stainless Steel  
 Supplied with trocar point in which according to ASTM F.138 - ISO  
 the tip is sharpened to a three facet 5832/1.  
 point.



diam. mm	Ref. No ROT-440...-..					
	length					
	7	10	13	15	23	31
0,8	070-08	100-08	130-08	150-08	230-08	310-08
0,9		100-09	130-09	150-09	230-09	310-09
1,0	070-10	100-10	130-10	150-10	230-10	310-10
1,1		100-11	130-11	150-11	230-11	310-11
1,2		100-12	130-12	150-12	230-12	310-12
1,3		100-13	130-13	150-13	230-13	310-13
1,4		100-14	130-14	150-14	230-14	310-14
1,5		100-15	130-15	150-15	230-15	310-15
1,6		100-16	130-16	150-16	230-16	310-16
1,7		100-17	130-17	150-17	230-17	310-17
1,8		100-18	130-18	150-18	230-18	310-18
1,9		100-19	130-19	150-19	230-19	310-19
2,0		100-20	130-20	150-20	230-20	310-20
2,2		100-22	130-22	150-22	230-22	310-22
2,4		100-24	130-24	150-24	230-24	310-24
2,5	070-25	100-25	130-25	150-25	230-25	310-25
2,8		100-28	130-28	150-28	230-28	310-28
3,0		100-30	130-30	150-30	230-30	310-30



Kirschner Drill Wires with Trocar point / triangular shaft end

Kirschner Bohrdrähte mit Trokarspitze / 3-kant Schaftende

Alambres Kirschner con Punta Trocar con extremo triangular

Perforatori filiformi Kirschner con Punta trequarti con triangolari

**Indication:** Use in setting fractures. **Material:** Certified Stainless Steel  
Supplied with trocar point in which according to ASTM F.138 - ISO  
the tip is sharpened to a three facet 5832/1.  
point.



diam. mm	Ref. No ROT-440...-../3				
	length				
	10	13	15	23	31
2,0	100-20/3	130-20/3	150-20/3	230-20/3	310-20/3
2,2	100-22/3	130-22/3	150-22/3	230-22/3	310-22/3
2,4	100-24/3	130-24/3	150-24/3	230-24/3	310-24/3
2,5	100-25/3	130-25/3	150-25/3	230-25/3	310-25/3
2,8	100-28/3	130-28/3	150-28/3	230-28/3	310-28/3
3,0	100-30/3	130-30/3	150-30/3	230-30/3	310-30/3



Kirschner Drill Wires with Trocar point / Square headed shaft end

Kirschner Bohrdrähte mit Trokarspitze / 4-kant Schaftende

Alambres Kirschner con Punta Trocar con extremo cuadrangular

Perforatori filiformi Kirschner con Punta tre quarti con quadrangolare

**Indication:** Use in setting fractures. **Material:** Certified Stainless Steel  
 Supplied with trocar point in which according to ASTM F.138 - ISO  
 the tip is sharpened to a three facet 5832/1.  
 point.



diam. mm	Ref. No ROT-440...-../4				
	length				
	10	13	15	23	31
2,0	100-20/4	130-20/4	150-20/4	230-20/4	310-20/4
2,2	100-22/4	130-22/4	150-22/4	230-22/4	310-22/4
2,4	100-24/4	130-24/4	150-24/4	230-24/4	310-24/4
2,5	100-25/4	130-25/4	150-25/4	230-25/4	310-25/4
2,8	100-28/4	130-28/4	150-28/4	230-28/4	310-28/4
3,0	100-30/4	130-30/4	150-30/4	230-30/4	310-30/4

Kirschner Drill Wires with Trocar point / flat shaft end

Kirschner Bohrdrahnte mit Trokarspitze / flaches Schaftende

Alambres Kirschner con Punta Trocar con extremo plano

Perforatorio filiformi Kirschner con Punta tre quarti con estremo piatto

**Indication:** Use in setting fractures. **Material:** Certified Stainless Steel  
Supplied with trocar point in which the tip is sharpened to a three facet point.



diam. mm	Ref. No ROT-440...-../F				
	length				
	10	13	15	23	31
0,8	100-08/F	130-08/F	150-08/F	230-08/F	310-08/F
0,9	100-09/F	130-09/F	150-09/F	230-09/F	310-09/F
1,0	100-10/F	130-10/F	150-10/F	230-10/F	310-10/F
1,1	100-11/F	130-11/F	150-11/F	230-11/F	310-11/F
1,2	100-12/F	130-12/F	150-12/F	230-12/F	310-12/F
1,3	100-13/F	130-13/F	150-13/F	230-13/F	310-13/F
1,4	100-14/F	130-14/F	150-14/F	230-14/F	310-14/F
1,5	100-15/F	130-15/F	150-15/F	230-15/F	310-15/F
1,6	100-16/F	130-16/F	150-16/F	230-16/F	310-16/F
1,7	100-17/F	130-17/F	150-17/F	230-17/F	310-17/F
1,8	100-18/F	130-18/F	150-18/F	230-18/F	310-18/F
1,9	100-19/F	130-19/F	150-19/F	230-19/F	310-19/F
2,0	100-20/F	130-20/F	150-20/F	230-20/F	310-20/F
2,2	100-22/F	130-22/F	150-22/F	230-22/F	310-22/F
2,4	100-24/F	130-24/F	150-24/F	230-24/F	310-24/F
2,5	100-25/F	130-25/F	150-25/F	230-25/F	310-25/F
2,8	100-28/F	130-28/F	150-28/F	230-28/F	310-28/F
3,0	100-30/F	130-30/F	150-30/F	230-30/F	310-30/F



Kirschner Drill Wires with Trocar point / trocar shaft end

Kirschner Bohrdrähte mit Trokarspitze / Trokar Schaftende

Alambres Kirschner con Punta Trocar con punta trocar

Chiodi per ossa Steinmann Punta trequarti con trequarti Bilateral

**Indication:** Use in setting fractures. **Material:** Certified Stainless Steel  
 Supplied with trocar point in which according to ASTM F.138 - ISO  
 the tip is sharpened to a three facet 5832/1.  
 point.



diam. mm	Ref. No ROT-440...-../T				
	length				
	10	13	15	23	31
0,8	100-08/T	130-08/T	150-08/T	230-08/T	310-08/T
0,9	100-09/T	130-09/T	150-09/T	230-09/T	310-09/T
1,0	100-10/T	130-10/T	150-10/T	230-10/T	310-10/T
1,1	100-11/T	130-11/T	150-11/T	230-11/T	310-11/T
1,2	100-12/T	130-12/T	150-12/T	230-12/T	310-12/T
1,3	100-13/T	130-13/T	150-13/T	230-13/T	310-13/T
1,4	100-14/T	130-14/T	150-14/T	230-14/T	310-14/T
1,5	100-15/T	130-15/T	150-15/T	230-15/T	310-15/T
1,6	100-16/T	130-16/T	150-16/T	230-16/T	310-16/T
1,7	100-17/T	130-17/T	150-17/T	230-17/T	310-17/T
1,8	100-18/T	130-18/T	150-18/T	230-18/T	310-18/T
1,9	100-19/T	130-19/T	150-19/T	230-19/T	310-19/T
2,0	100-20/T	130-20/T	150-20/T	230-20/T	310-20/T
2,2	100-22/T	130-22/T	150-22/T	230-22/T	310-22/T
2,4	100-24/T	130-24/T	150-24/T	230-24/T	310-24/T
2,5	100-25/T	130-25/T	150-25/T	230-25/T	310-25/T
2,8	100-28/T	130-28/T	150-28/T	230-28/T	310-28/T
3,0	100-30/T	130-30/T	150-30/T	230-30/T	310-30/T

Kirschner Drill wires with Lance point / round shaft end

Kirschner Bohrdrähte mit Lanzettenspitze / rundes Schaftende

Alambres Kirschner Punta lanceolar con extremo redondo

Perforatori filiformi Kirschner con Punta lanceolata con estremità rotonda

**Indication:** Use in setting fractures. **Material:** Certified Stainless Steel  
 Supplied with trocar point in which according to ASTM F.138 - ISO  
 the tip is sharpened to a three facet 5832/1.  
 point.



diam. mm	Ref. No ROT-442....-					
	length					
	7	10	13	15	23	31
0,8	070-08	100-08	130-08	150-08	230-08	310-08
0,9		100-09	130-09	150-09	230-09	310-09
1,0	070-10	100-10	130-10	150-10	230-10	310-10
1,1		100-11	130-11	150-11	230-11	310-11
1,2		100-12	130-12	150-12	230-12	310-12
1,3		100-13	130-13	150-13	230-13	310-13
1,4		100-14	130-14	150-14	230-14	310-14
1,5		100-15	130-15	150-15	230-15	310-15
1,6		100-16	130-16	150-16	230-16	310-16
1,7		100-17	130-17	150-17	230-17	310-17
1,8		100-18	130-18	150-18	230-18	310-18
1,9		100-19	130-19	150-19	230-19	310-19
2,0		100-20	130-20	150-20	230-20	310-20
2,2		100-22	130-22	150-22	230-22	310-22
2,4		100-24	130-24	150-24	230-24	310-24
2,5	070-25	100-25	130-25	150-25	230-25	310-25
2,8		100-28	130-28	150-28	230-28	310-28
3,0		100-30	130-30	150-30	230-30	310-30



Kirschner Drill Wires with lance point / triangular shaft end

Kirschner Bohrdrähte mit Lanzettenspitze / 3-kant Schaftende

Alambres Kirschner con Punta lanceolar con extremo triangular

Perforatori filiformi Kirschner con Punta lanceolata con triangolari

**Indication:** Use in setting fractures. **Material:** Certified Stainless Steel  
Supplied with trocar point in which according to ASTM F.138 - ISO  
the tip is sharpened to a three facet 5832/1.  
point.



diam. mm	Ref. No ROT-442...-../3				
	length				
	10	13	15	23	31
2,0	100-20/3	130-20/3	150-20/3	230-20/3	310-20/3
2,2	100-22/3	130-22/3	150-22/3	230-22/3	310-22/3
2,4	100-24/3	130-24/3	150-24/3	230-24/3	310-24/3
2,5	100-25/3	130-25/3	150-25/3	230-25/3	310-25/3
2,8	100-28/3	130-28/3	150-28/3	230-28/3	310-28/3
3,0	100-30/3	130-30/3	150-30/3	230-30/3	310-30/3

Kirschner Drill Wires with lance point / Square headed shaft end

Kirschner Bohrdrähte mit Lanzettenspitze / 4-kant Schaftende

Alambres Kirschner con Punta lanceolar con extremo cuadrangular

Perforatori filiformi Kirschner con Punta lanceolata con quadrangolare

**Indication:** Use in setting fractures. **Material:** Certified Stainless Steel  
 Supplied with trocar point in which the tip is sharpened to a three facet point. according to ASTM F.138 - ISO 5832/1.



diam. mm	Ref. No ROT-442...-../4				
	length				
	10	13	15	23	31
2,0	100-20/4	130-20/4	150-20/4	230-20/4	310-20/4
2,2	100-22/4	130-22/4	150-22/4	230-22/4	310-22/4
2,4	100-24/4	130-24/4	150-24/4	230-24/4	310-24/4
2,5	100-25/4	130-25/4	150-25/4	230-25/4	310-25/4
2,8	100-28/4	130-28/4	150-28/4	230-28/4	310-28/4
3,0	100-30/4	130-30/4	150-30/4	230-30/4	310-30/4



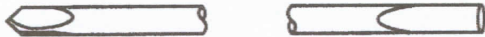
Kirschner Drill Wires with lance point / flat shaft end

Kirschner Bohrdrähte mit Lanzettenspitze / flachem Schaftende

Alambres Kirschner con Punta lanceolar con extremo plano

Perforatore filiformi Kirschner con Punta lanceolata con estremo piatto

**Indication:** Use in setting fractures. **Material:** Certified Stainless Steel  
Supplied with trocar point in which according to ASTM F.138 - ISO  
the tip is sharpened to a three facet 5832/1.  
point.



diam. mm	Ref. No ROT-442...-../F				
	length				
	10	13	15	23	31
0,8	100-08/F	130-08/F	150-08/F	230-08/F	310-08/F
0,9	100-09/F	130-09/F	150-09/F	230-09/F	310-09/F
1,0	100-10/F	130-10/F	150-10/F	230-10/F	310-10/F
1,1	100-11/F	130-11/F	150-11/F	230-11/F	310-11/F
1,2	100-12/F	130-12/F	150-12/F	230-12/F	310-12/F
1,3	100-13/F	130-13/F	150-13/F	230-13/F	310-13/F
1,4	100-14/F	130-14/F	150-14/F	230-14/F	310-14/F
1,5	100-15/F	130-15/F	150-15/F	230-15/F	310-15/F
1,6	100-16/F	130-16/F	150-16/F	230-16/F	310-16/F
1,7	100-17/F	130-17/F	150-17/F	230-17/F	310-17/F
1,8	100-18/F	130-18/F	150-18/F	230-18/F	310-18/F
1,9	100-19/F	130-19/F	150-19/F	230-19/F	310-19/F
2,0	100-20/F	130-20/F	150-20/F	230-20/F	310-20/F
2,2	100-22/F	130-22/F	150-22/F	230-22/F	310-22/F
2,4	100-24/F	130-24/F	150-24/F	230-24/F	310-24/F
2,5	100-25/F	130-25/F	150-25/F	230-25/F	310-25/F
2,8	100-28/F	130-28/F	150-28/F	230-28/F	310-28/F
3,0	100-30/F	130-30/F	150-30/F	230-30/F	310-30/F

Kirschner Drill Wires with lance point / lance shaft end

Kirschner Bohrdrähte mit Lanzettenspitze / Lanzettenende

Alambres Kirschner con Punta lanceolar con punta lanceolar

Chiodi per ossa Kirschner Punta lanceolata con lanceolata Bilateral

**Indication:** Use in setting fractures. **Material:** Certified Stainless Steel  
 Supplied with trocar point in which according to ASTM F.138 - ISO  
 the tip is sharpened to a three facet 5832/1.  
 point.



diam. mm	Ref. No ROT-442...-.../L				
	length				
	10	13	15	23	31
0,8	100-08/L	130-08/L	150-08/L	230-08/L	310-08/L
0,9	100-09/L	130-09/L	150-09/L	230-09/L	310-09/L
1,0	100-10/L	130-10/L	150-10/L	230-10/L	310-10/L
1,1	100-11/L	130-11/L	150-11/L	230-11/L	310-11/L
1,2	100-12/L	130-12/L	150-12/L	230-12/L	310-12/L
1,3	100-13/L	130-13/L	150-13/L	230-13/L	310-13/L
1,4	100-14/L	130-14/L	150-14/L	230-14/L	310-14/L
1,5	100-15/L	130-15/L	150-15/L	230-15/L	310-15/L
1,6	100-16/L	130-16/L	150-16/L	230-16/L	310-16/L
1,7	100-17/L	130-17/L	150-17/L	230-17/L	310-17/L
1,8	100-18/L	130-18/L	150-18/L	230-18/L	310-18/L
1,9	100-19/L	130-19/L	150-19/L	230-19/L	310-19/L
2,0	100-20/L	130-20/L	150-20/L	230-20/L	310-20/L
2,2	100-22/L	130-22/L	150-22/L	230-22/L	310-22/L
2,4	100-24/L	130-24/L	150-24/L	230-24/L	310-24/L
2,5	100-25/L	130-25/L	150-25/L	230-25/L	310-25/L
2,8	100-28/L	130-28/L	150-28/L	230-28/L	310-28/L
3,0	100-30/L	130-30/L	150-30/L	230-30/L	310-30/L



Knochendraht  
Bone wire  
Hilos para huesos  
Filo per ossa



weich, in Ringen zu 10 m (32,8 Feet)  
soft, in coils of 10 m (32,8 Feet)  
blando, de 10 m (32,8 Feet)  
morbido, 10 m (32,8 Feet)

Material:  
nichtrostender Implantatstahl  
nach DIN 17443 (ISO 5832/1)

	mm Ø
34520-02	0,2
34520-03	0,3
34520-04	0,4
34520-05	0,5
34520-06	0,6
34520-07	0,7
34520-08	0,8 <i>Lot 45.3</i>
34520-09	0,9 <i>Lot 45.2</i>
34520-10	1,0 <i>Lot 45.1</i>
34520-12	1,2
34520-15	1,5