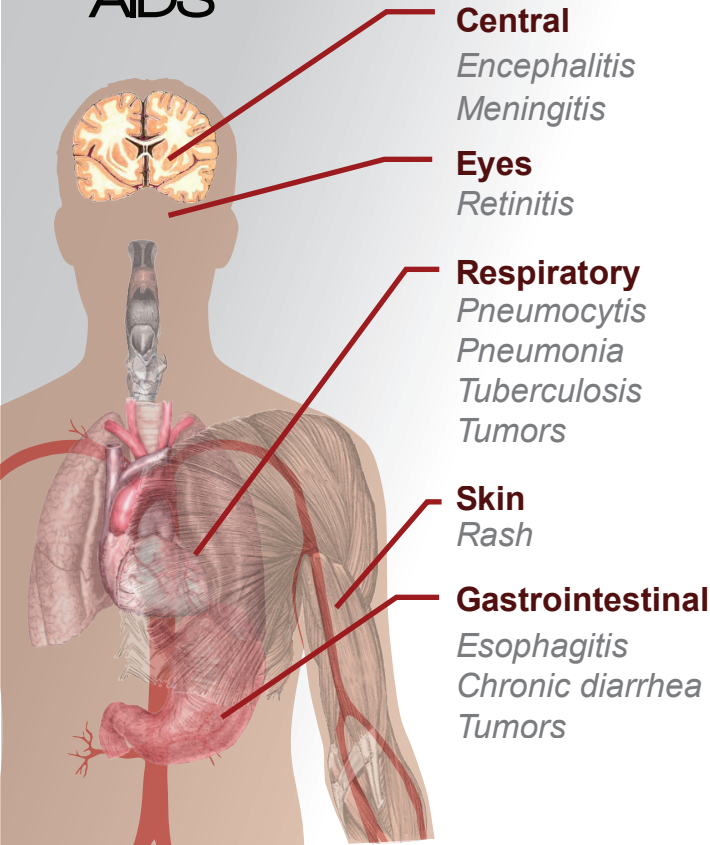


There are about 34 million people living with HIV around the world

## What is HIV?

The human immunodeficiency virus (HIV) causes acquired immunodeficiency syndrome (AIDS). HIV infects and attacks immune system, resulting in the chronic and progressive failure of the immune system. A compromised immune system can lead to life-threatening opportunistic infections. HIV is transmitted primarily by body fluids during unprotected sex, contaminated blood or needles and from mother to child during pregnancy.

## Symptoms of AIDS



## Artron HIV Test kit

Available in strip and cassette format, Artron One-Step HIV Antibody Rapid Diagnostic Tests detects the presence of antibodies against HIV antigens GP 41 and GP 36.

Artron One-Step **HIV (1/2) Antibody Test** is designed to detect HIV 1/2 antibodies in human serum, plasma and whole blood

Specificity: **99.8%**

Sensitivity for HIV-1: **99.9%**

Sensitivity for HIV-1: **99.9%**

Accuracy: **99.8%**

Artron One-Step **HIV (1/2) Antibody Tri-line Test** is designed to detect HIV 1 and 2 antibodies separately in human serum, plasma and whole blood samples.

