

Specificatii Tehnice

| Numărul licitației: <u>ocds-b3wdp1-MD-1706515831885</u> Data: <u>05.03.24</u> | | | | | | | |
|---|--|---|-----------------|--------------|--|---|-------------------------|
| Denumirea licitației: <u>Anvelope</u> | | | | | | | |
| Nr. d/o | Denumirea bunurilor | Denumirea Modelului articolului | Țara de origine | Producătorul | Specificarea tehnică deplină solicitată de către autoritatea contractantă | Specificarea tehnică deplină propusă de către ofertant | Standar-de de referință |
| 1 | Anvelope pentru autobuze 275/70 R22,5 | 275/70R22.5TL 152/148J M+S, HL U02ePM all position | Turcia | Pirelli | Dimensiuni: 275*70 R22,5 Țara de origine: UE sau Turcia Pentru autobuze orășanești; Anul producerii: 2023 Perioada de garanție 12 luni Indicele de viteză: min G Indicele de sarcină: min 150/148 Structura: Radială All seasons | Dimensiuni: 275/70 R22,5 Țara de origine: Turcia Pentru autobuze orasenesti Anul producerii: 2024 Perioada de garantie: 12 luni Indicele de viteza: J Indicele de sarcina: 152/148 Structura: radiala Pentru toate anotimpurile | |
| 2 | Anvelope pentru autobuze 295/80 R22,5 | 295/80/22.5 Bridgestone Coach - AP 001 154M149M TL | Polonia | Bridgestone | Dimensiuni: 295*80 R22,5 Țara de origine: UE sau Turcia Pentru autobuze orășanești; Anul producerii: 2023 Perioada de garanție 12 luni Indicele de viteză: min G Indicele de sarcină: min 152/148 Structura: Radială All seasons | Dimensiuni: 295/80 R22,5 Țara de origine: UE Pentru autobuze orasenesti Anul producerii: 2023 Perioada de garantie: 12 luni Indicele de viteza: M Indicele de sarcina: 154/149 Structura: radiala Pentru toate anotimpurile | |
| | Anvelope 235*65 R17 | 235/65/17 Bridgestone LM005 108H XL | Spania | Bridgestone | Dimensiuni: 235*65 R17 Țara de origine: UE sau Turcia Anul producerii: 2023 Pentru autoturism SUV Perioada de garanție 12 luni Indicele de viteză: min R 170 km/h Indicele de sarcină: 108 (1000 kg) Anotimpul: iarna | Dimensiuni: 235*65 R17 Țara de origine: Spania Anul producerii: 2023 Pentru autoturism SUV - XL Perioada de garanție 12 luni Indicele de viteză: H 210 km/h Indicele de sarcină: 108 (1000 kg) Anotimpul: iarna | |
| | Anvelope 215*65 R15C | 215/65 R 15 C Nordicca Van 104/102T 6PR Matador | Slovacia | Matador | Dimensiuni: 215*65 R15C Țara de origine: UE sau Turcia Anul producerii: 2023 Pentru microbuz marfar. Perioada de garanție 12 luni Indicele de viteză: min R 170 km/h Indicele de sarcină: min 104/102 All seasons | Dimensiuni: 215*65 R15C Țara de origine: Slovacia Anul producerii: 2023 Pentru microbuz marfar. Perioada de garanție 12 luni Indicele de viteza: T- 190 km/h Indicele de sarcina: 104/102 All seasons | |



Semnat: _____ Goncariuc Ghenadii În calitate de: manager

Ofertantul: S. "Eximotor"

Adresa: mun. Chișinău, str. Aerodromului 15/6

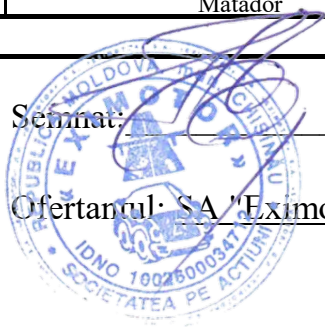
SPECIFICAȚII DE PREȚ

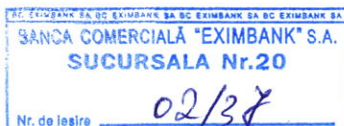
| Numărul licitației: <i>ocds-b3wdp1-MD-1706515831885</i> | | | | | | | | | | | Data: <i>05.03.24</i> | |
|---|------------|---|--------------------|-------------|------------------------|----------------------|---------------|--------------|--|------------------------------|-----------------------|--|
| Denumirea licitației: <i>Anvelope</i> | | | | | | | | | | | | |
| Nr. d/o | Co-dul CPV | Denumirea bunurilor | Unitatea de măsură | Canti-tatea | Preț unitar (fără TVA) | Preț unitar (cu TVA) | Suma fără TVA | Suma cu TVA | Termen de livrare | Clasificație bugetară (IBAN) | | |
| 1 | 34351100-3 | Anvelope pentru autobuze 275/70 R22,5 | buc | 730 | 5610.00 | 6732 | 4,095,300.00 | 4,914,360.00 | Bunurile vor fi livrate în termen de 30 zile de la data comenzii, conform INCOTERMS 2013 (DDP) | MD17ML000000002251308233 | | |
| 2 | | Anvelope pentru autobuze 295/80/22.5 Bridgestone Coach - AP 001 154M149M TL | buc | 62 | 5250.00 | 6300 | 325,500.00 | 390,600.00 | | | | |
| 3 | | Anvelope 235*65 R17 235/65/17 Bridgestone LM005 108H XL | buc | 4 | 1725.00 | 2070 | 6,900.00 | 8,280.00 | | | | |
| 4 | | Anvelope 215*65 R15C 215/65 R 15 C Nordicca Van 104/102T 6PR Matador | buc | 8 | 2050 | 2460 | 16,400.00 | 19,680.00 | | | | |
| | | | | 804 | | | 4,444,100.00 | 5,332,920.00 | | | | |

Semnat: _____ Goncariuc Ghenadii În calitate de: manager

Ofertantul: SA "Eximotor"

Adresa: mun. Chișinău, str. Aerodromului 15/6





29. FEB. 2024

Anexa nr. 9
la Documentația standard din
Ordinul Ministrului Finanțelor
nr. 115 din 15 septembrie 2021

SCRISOARE DE GARANȚIE BANCARĂ nr. 10764/55

pentru participare cu ofertă la procedura de atribuire a contractului de achiziție publică

Către Î.M. **Parcul Urban de Autobuze**, mun. Chișinău, str. Sarmizegetusa, nr. 51, cu privire la procedura de atribuire a contractului, pentru **achiziționarea anvelopelor**, conform LP nr. **ocds-b3wdp1-MD-1706515831885** din **05.03.2024**, subsemnării **B.C. "Eximbank" S.A.**, înregistrat la MD2004, Republica Moldova, mun. Chișinău, bd. Ștefan cel Mare și Sfânt, 171/1, ne obligăm față de **Î.M. Parcul Urban de Autobuze**, să plătim suma de **44 441-00 (patruzeci și patru mii patru sute patruzeci și unu) lei 00 bani**, la prima sa cerere scrisă și fără ca acesta să aibă obligația de a-și motiva cererea respectivă, cu condiția, ca în cererea sa autoritatea contractantă să specifice că suma cerută de ea și datorată ei este din cauza existenței uneia sau mai multora dintre situațiile următoare:

1. Ofertantul „**Eximotor**” SA își retrage sau modifică oferta în perioada de valabilitate a acesteia.
2. Oferta sa fiind stabilită câștigătoare, ofertantul „**Eximotor**” SA nu a constituit garanția de bună execuție.
3. Oferta sa fiind stabilită câștigătoare, ofertantul „**Eximotor**” SA a refuzat să semneze contractul de achiziție publică de bunuri/servicii;
4. Nu se execută vreo condiție, specificată în documentația de atribuire înainte de semnarea contractului de achiziție publică de bunuri/servicii.

Prezenta garanție este valabilă din data de **05.03.2024** până la data de **10.05.2024**.

Parafată de Banca

Galina Merzleacova
Director-adjunct Sucursala № 20

Data 29.02.2024



Banca Comercială "EXIMBANK" S.A. Oficiul Central: Bd. Ștefan cel Mare și Sfânt nr. 171/1, MD-2004, mun. Chișinău.

Cod bancar/SWIFT EXMMMD22, Licența Seria A MMI nr. 000516 eliberată de Banca Națională a Moldovei, IDNO 1002600010273, TVA 7800065, Capital social 1 250 000 000 lei. Membru al Fondului de Garantare a Depozitelor în Sistemul Bancar din Republica Moldova. Membru al Grupului Bancar Intesa Sanpaolo (Italia).

Bank of INTESA SANPAOLO

Fișă cu informații despre produs

Regulamentul delegat (UE) 2020/740

| | | | |
|---|---------------------------------------|---|-------|
| Denumirea sau marca comercială a furnizorului | | PIRELLI | |
| Denumirea comercială | | U02 URBAN-e PRO MULTIAXLE | |
| Identificatorul tipului de pneu | Clasa de pneuri | 40995 | C3 |
| Indicativul dimensiunii pneului | | 275/70R22.5 | |
| Simbolul categoriei de viteză | | J 100 km/h | |
| Indice de sarcină (pentru montare nejumelată) | | 152 | |
| Indice de sarcină (pentru montare jumelată) | | 148 | |
| Clasa de eficiență a consumului de combustibil | | B | |
| Clasa de aderență pe teren umed | | B | |
| Clasa de zgomot exterior de rulare | Valoarea de zgomot exterior de rulare | A | 69 dB |
| Pneu destinat utilizării în condiții extreme de zăpadă | | Da | |
| Indice de sarcină pentru descrierea serviciului suplimentar (pentru montare nejumelată) | | - | |
| Indice de sarcină pentru descrierea serviciului suplimentar (pentru montare jumelată) | | - | |
| Simbolul categoriei de viteză (pentru descrierea serviciului suplimentar) | | | |
| Data începerii producției (Săptămână / An) | | 14/21 | |
| Data încheierii producției (Săptămână / An) | | - | |
| Adresa furnizorului | | Prometeon infoline, viale sarca 222, Milano, IT | |
| Informații suplimentare | | | |

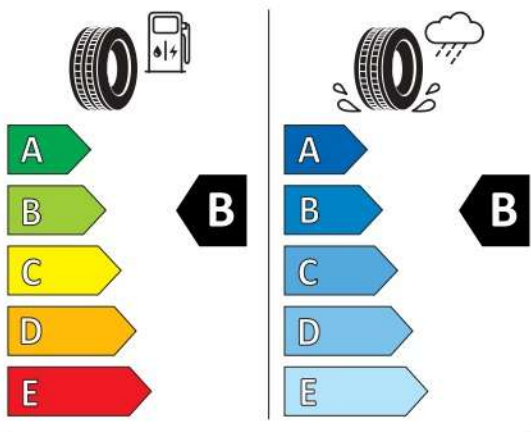


PIRELLI

40995

275/70R22.5 152/148 J

C3



2020/740



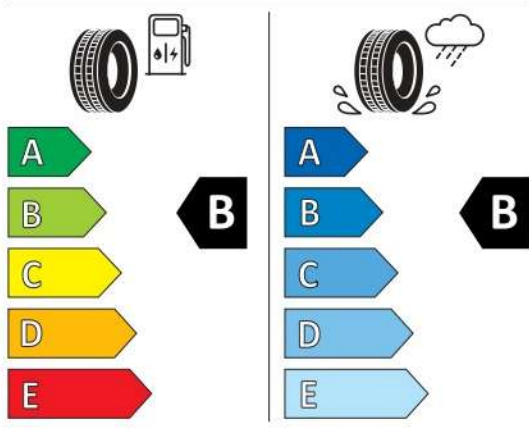
Fișă cu informații despre produs

Regulamentul delegat (UE) 2020/740

| | | | |
|---|---------------------------------------|---|-------|
| Denumirea sau marca comercială a furnizorului | | BRIDGESTONE | |
| Denumirea comercială | | COACH-AP 001 | |
| Identificatorul tipului de pneu | Clasa de pneuri | 16926 | C3 |
| Indicativul dimensiunii pneului | | 295/80 R22.5 | |
| Simbolul categoriei de viteză | | M 130 km/h | |
| Indice de sarcină (pentru montare nejumelată) | | 154 | |
| Indice de sarcină (pentru montare jumelată) | | 149 | |
| Clasa de eficiență a consumului de combustibil | | B | |
| Clasa de aderență pe teren umed | | B | |
| Clasa de zgomot exterior de rulare | Valoarea de zgomot exterior de rulare | A | 69 dB |
| Pneu destinat utilizării în condiții extreme de zăpadă | | Da | |
| Indice de sarcină pentru descrierea serviciului suplimentar (pentru montare nejumelată) | | - | |
| Indice de sarcină pentru descrierea serviciului suplimentar (pentru montare jumelată) | | - | |
| Simbolul categoriei de viteză (pentru descrierea serviciului suplimentar) | | | |
| Data începerii producției (Săptămână / An) | | 44/19 | |
| Data încheierii producției (Săptămână / An) | | - | |
| Adresa furnizorului | | QA Operations, Via del Fosso de I Salceto 13/15, 00128 Rome, IT | |
| Informații suplimentare | | IPC 16926 | |



BRIDGESTONE 16926
295/80 R22.5 154/149 M C3



2020/740



Fișă cu informații despre produs

Regulamentul delegat (UE) 2020/740

| | | | |
|--|---------------------------------------|---|-------|
| Denumirea sau marca comercială a furnizorului | | BRIDGESTONE | |
| Denumirea comercială | | BLIZZAK LM005 | |
| Identificatorul tipului de pneu | Clasa de pneuri | 15037 | C1 |
| Indicativul dimensiunii pneului | | 235/65 R17 | |
| Simbolul categoriei de viteză | | H 210 km/h | |
| Indicele capacității de încărcare | | 108 | |
| Versiunea de sarcină | | XL | |
| Clasa de eficiență a consumului de combustibil | | B | |
| Clasa de aderență pe teren umed | | A | |
| Clasa de zgomot exterior de rulare | Valoarea de zgomot exterior de rulare | B | 72 dB |
| Pneu destinat utilizării în condiții extreme de zăpadă | | Da | |
| Pneu destinat utilizării în condiții extreme de polei | | Nu | |
| Data începerii producției (Săptămână / An) | | 18/19 | |
| Data încheierii producției (Săptămână / An) | | - | |
| Adresa furnizorului | | QA Operations, Via del Fosso de I Salceto 13/15, 00128 Rome, IT | |
| Informații suplimentare | | IPC 15037 | |

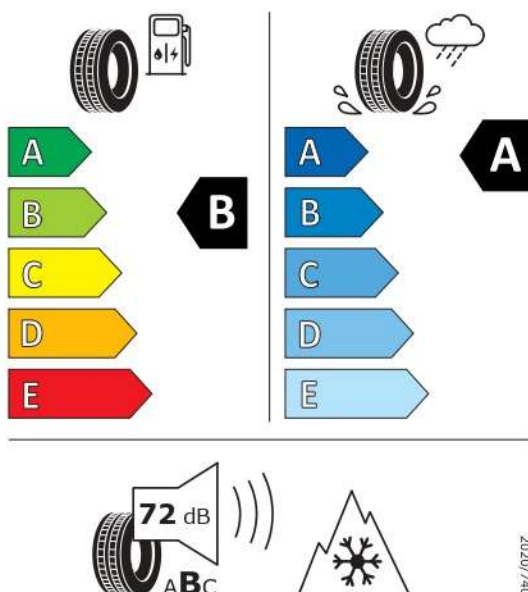


BRIDGESTONE

15037

235/65 R17 108 H XL

C1



Fișă cu informații despre produs

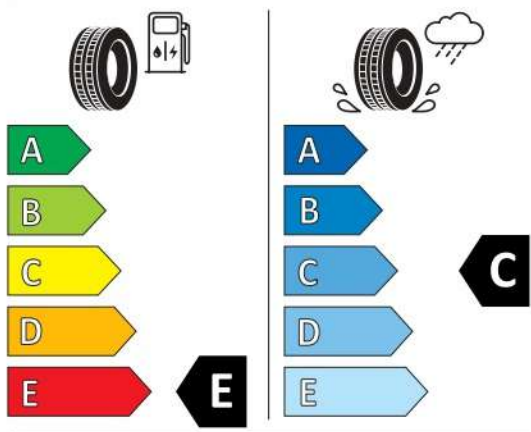
Regulamentul delegat (UE) 2020/740

| | | | |
|---|---------------------------------------|--|-------|
| Denumirea sau marca comercială a furnizorului | | Matador | |
| Denumirea comercială | | NORDICCA VAN | |
| Identificatorul tipului de pneu | Clasa de pneuri | 0428117 | C2 |
| Indicativul dimensiunii pneului | | 215/65 R 16 C | |
| Simbolul categoriei de viteză | | R 170 km/h | |
| Indice de sarcină (pentru montare nejumelată) | | 109 | |
| Indice de sarcină (pentru montare jumelată) | | 107 | |
| Clasa de eficiență a consumului de combustibil | | E | |
| Clasa de aderență pe teren umed | | C | |
| Clasa de zgomot exterior de rulare | Valoarea de zgomot exterior de rulare | B | 72 dB |
| Pneu destinat utilizării în condiții extreme de zăpadă | | Da | |
| Indice de sarcină pentru descrierea serviciului suplimentar (pentru montare nejumelată) | | 106 | |
| Indice de sarcină pentru descrierea serviciului suplimentar (pentru montare jumelată) | | - | |
| Simbolul categoriei de viteză (pentru descrierea serviciului suplimentar) | | T | |
| Data începerii producției (Săptămână / An) | | 16/21 | |
| Data încheierii producției (Săptămână / An) | | - | |
| Adresa furnizorului | | Continental Reifen Deutschland GmbH, Va hrenwalder Straße 9, 30165 Hannover, DE | |
| Informații suplimentare | | | |



Matador 0428117

215/65 R 16 C 109/107 R C2



2020/740





U02 URBAN-e PRO M: Product Presentation

PIRELLI

TRUCK BUS AGRO OTR

PROMETEON

The new **02** series is now coming

SERIE 02

Safe and Sustainable mobility

High **safety** standard even at worn out, ensuring constant braking & traction, and **sustainable mobility** through:



Reduction of raw materials with tyre weight optimization, maintaining delivered product performance.



Reusage & Recycle extending tyre life through retreating, and Recycle through using end of life tyre as new recyclable raw materials



Rethinking about materials and formulations to replace fossil resources with renewable biosource compound.

Cost-efficiency

Tailor-made products designed to increase its customers' return on investment by prolonged life-cycle and increased vehicle uptime, combining mileage performance, robustness and fuel savings.



Product homologation:

The **new 02 series** are being approved by the main European OEMs such as CNH, DAF, MAN, DAIMLER

MARKET EXPECTATIONS



Contributing with a low rolling resistance tyres to **increase the autonomy of the city buses and reduce the battery charging** cycles for full electric vehicles.

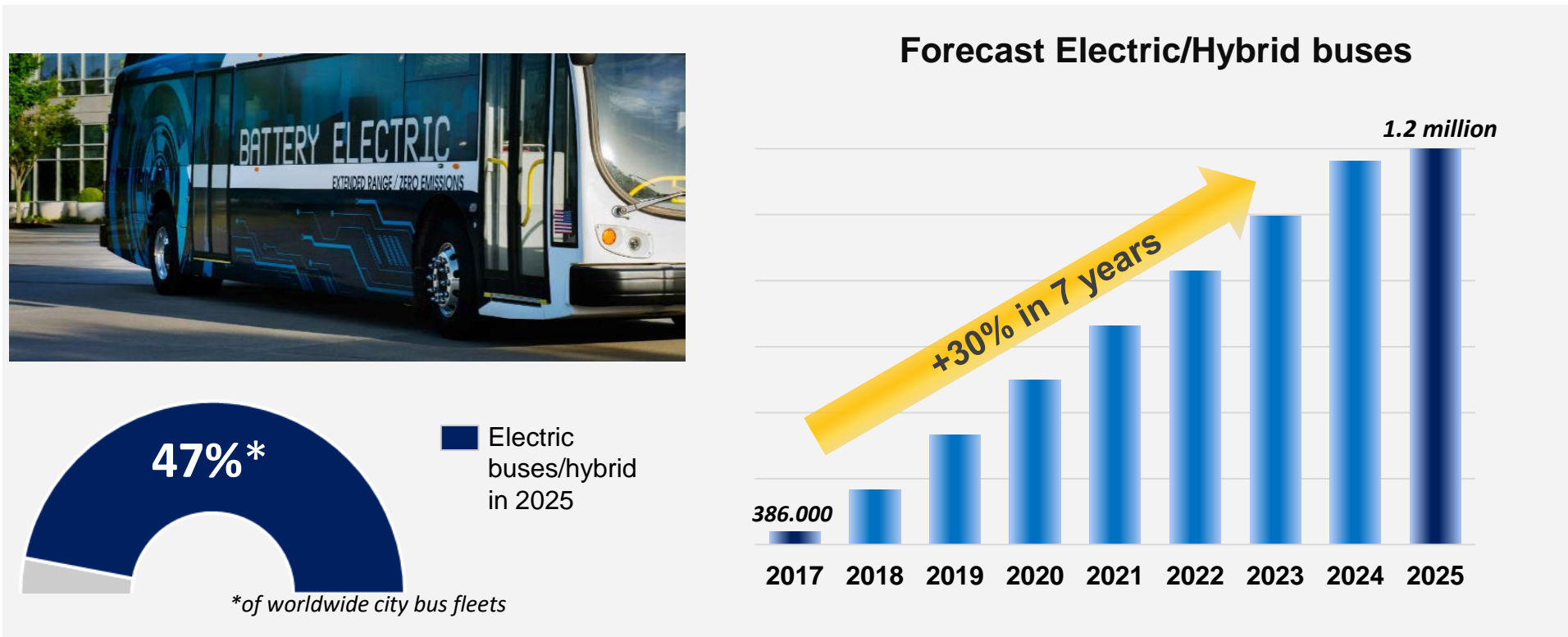
Higher load capacity to meet the increased weight on front axle due to electric/hybrid vehicles necessity.

Compliance with winter regulations (M+S & 3PMSF).

Reduced operating costs with an improved level of comfort, low noise generation and new design reinforced sidewall to improve friction wear.

THE IMPACT OF ELECTRIC BUSES ON URBAN LIFE...

By 2050, over two thirds of the world’s population will be living in **metropolitan areas**, according to the UN’s State of World Population reports. A change towards **sustainable transportation** is indispensable to keep the living standards as today. Electro-mobility plays a key role in the sustainable design of public transport.



*Within 7 years nearly half of worldwide city buses in service are expected to turn electric/hybrid. Hence, the total number of electric/hybrid buses is forecasted to more than triple, from 386.000 in 2017 to about **1.2 million in 2025**, equal to about **47% of all worldwide city bus fleets**.*

A NEW GENERATION OF TYRE

U02 URBAN-e PRO M is the new generation of all-position tyre for city bus fleets, specifically designed as an alternative tyre for electric & hybrid engines vehicles.

In order to guarantee an higher bus autonomy, the bus weight increased due to the higher load of batteries. The new **U02 URBAN-e PRO M** has an increased load capacity up to **8,1 tons** per axle.

An excellent European **B energy efficiency class** helps to have a longer vehicle autonomy and a consistent decrease of CO2 emissions with a reduction of 10% in rolling resistance vs the previous MC:01. In addition, the **U02 URBAN-e PRO M**, reduces the **operating costs**, which yields to an **improved level of comfort**, even **wear**, **low noise generation (69dB)** and **outstanding safety performance**.



Less fuel consumption: **B Fuel efficiency class**



Maximum Comfort: **Best in class with A (69db)**



Higher Safety Standards: **M+S, 3PMSF, B Wet traction class**

ON



FUEL EFFICIENCY



Product designed to provide low fuel consumption and total cost of ownership optimization. The best balance between mileage and fuel efficiency is found in long distance and highway routes.



VERSATILITY



Product designed to guarantee high mileage in any condition of usage and good resistance to highly abrasive surfaces. High level of safety on all roads and in all seasons.



WINTER



Products designed for use under critical weather conditions, snow and ice.



COACH



Specifically designed for comfort and safety in passenger transport, over medium and long distances.



URBAN



For urban passenger vehicles in stop & go traffic conditions, low average speed, continuous changes in road surfaces (asphalt, concrete, cobblestones).



CONSTRUCTION



For mixed use on roads, on construction sites and under aggressive tread-wear condition.



QUARRY & MINE



Products designed for use mainly on construction sites, in quarries and mining operations with highly aggressive tread-wear conditions.



SPECIAL USE







Products designed for use in demanding off-the-road situations on various types of surface (asphalt, track, muddy or grassy terrain, sand). Typical use off-the-road competition vehicles and civil protection department.

ON-OFF

RANGE OFFER



| | | REGULATION (EU) 2020/740 – LABEL PARAMETERS | | | | | | |
|-------------|--------------------|---|---|--|---|---|------|-----|
| SIZE | LOAD / SPEED INDEX | MARKING |  |  |  |  | RFID | |
| 275/70R22.5 | 152/148 J | M+S | B | B | A | 69 db | YES | YES |
| 315/60R22.5 | 156/150 J | M+S | B | B | A | 72 db | YES | |

TYRE FOOTPRINT PRESSURE



U02 URBAN-e PRO M has an optimized footprint with uniform ground contact pressure to enhance regular wear throughout the life and additional providing:

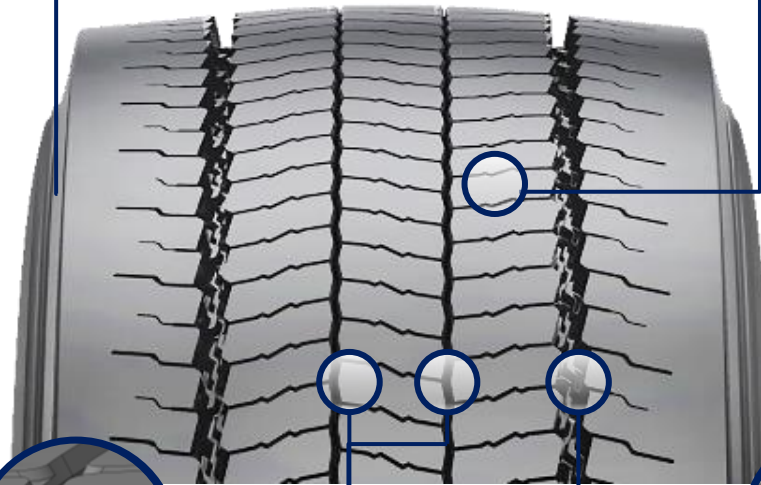
- **Low rolling resistance;**
- **High safety and constant grip in any seasonality;**
- **Higher comfort.**

U02 URBAN-e PRO M

U02 URBAN-e PRO M is an all-position tyre, with a focus on increased load index, energy efficiency, comfort and safety. The tread profile and the special geometry are designed to ensure **great traction** and to resist to pavement shocks throughout all of its lifespan.

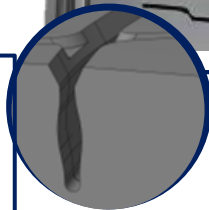
- **Sidewall geometry** (Pirelli patent) for high impact resistance, increased sidewall duration due to high friction resistance.

- New **sidewall continuous profile** with sidewall **wear indicator** (ISW) of 5,5 mm.

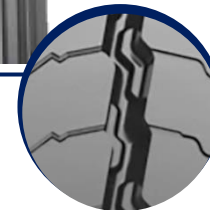


Innovative **high density sipes** designed to:

- Resist to the instant high torque delivery transmitted by electric engine;
- Enhance wet handling and traction;
- Improve Snow grip behavior (M+S, 3PMSF markings) to offer exceptional performance in all weather conditions.



Patent **median groove shapes** design (Prometeon Patent) keeps constant the grip during all tyre life and improving the wet handling.



- Optimized **lateral grooves design** to improve handling and comfort achieving an exceptional low noise (**69dB**).
- **Stone ejectors** protect grooves bottom and guarantee the safety and retreadability, improving the operational costs.

PROMETEAON

U02-e URBAN PRO MULTIAXLE: TECHNOLOGY

Energy Efficiency, Comfort and Safety with the Prometeon Technologies

PROMETEON
engineered

SWiTe



SPIRAL WIRE TECHNOLOGY

Bigger steel cable diameter which allows to enhance the durability and the overall tyre life, optimizing the total cost of ownership.

PROGEA



PROGEA TREAD COMPOUND

New compound formulation for a sustainable approach to the environment
(For more information, see next slide)

SHTB



SUPER HIGH TENSILE BELT CORD

The structure allows to obtain a high flexibility, a greater integrity, resistance to aging and prevents propagation of corrosion.

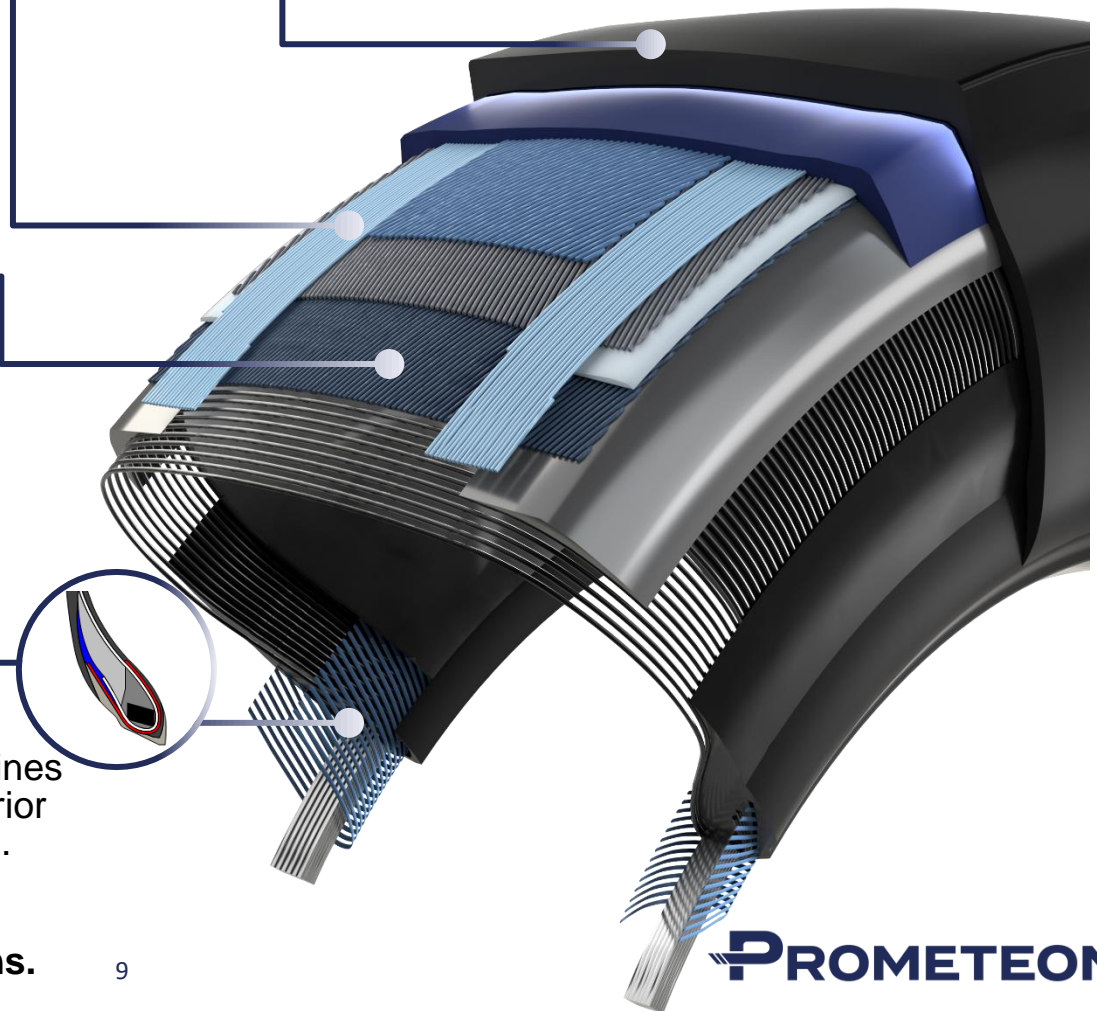
COBe



CROSS OVER BEAD

The reinforced bead, combined with the new geometry of the rectangular wire steel, combines greater flexibility and bead seating with superior longevity for the entire life cycle of the casing.

The reinforced bead guarantees excellent resistance to high load capacities up to **8 tons**.



Prometeon Tyre Group – Strictly Confidential

PROMETEON

NEW ECO FRIENDLY TREAD COMPOUND TECHNOLOGY : PROGEA



GEA
GRIP ENVIRONMENT APPROACH

1 NEW TREAD COMPOUND TECHNOLOGY (External layer)

The new Pro-Gea **eco-friendly compound formulation** ensures an high percentage of **sustainable materials** with a low environmental impact.

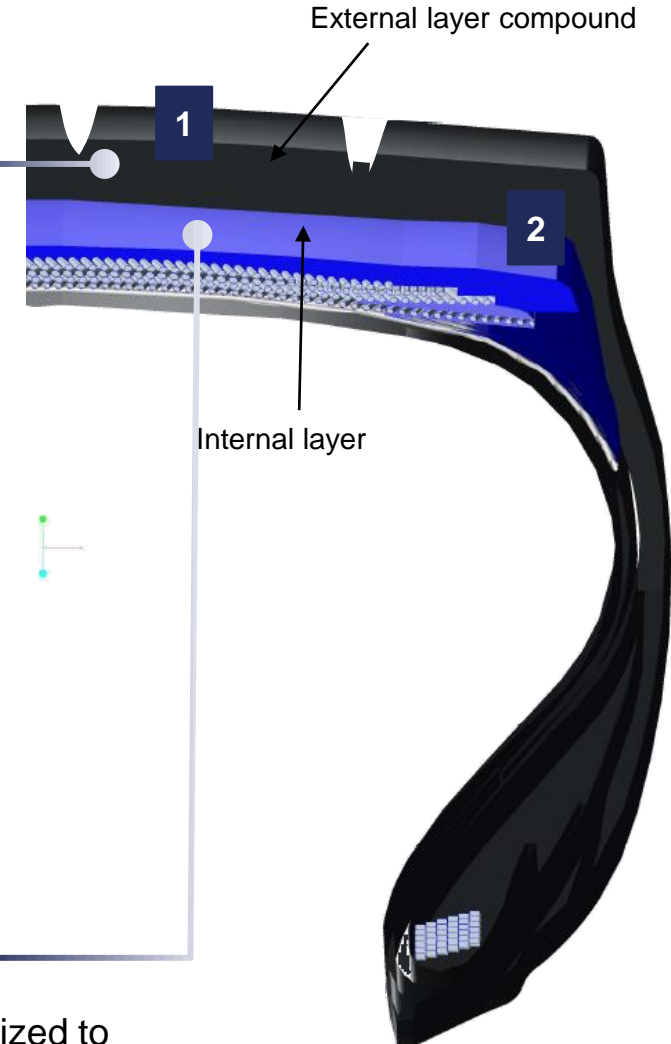
In terms of respecting the environment, the new Pro-Gea compound **reduces the tyre abrasion rating**, contributing to the reduction of microplastics in the environment. PTG is committed to actively contribute to the work of developing a reliable and reproducible method to measure tyre abrasion rate, reflecting European usage.

The formulation also allows to increase the **tyre life and the sustainable mobility**, with both excellent low fuel consumption in urban transportation and high wet grip in any conditions.

Moreover, an high amount of natural rubber in the mixture enhances the **even wear**, giving to the tyre an outstanding life.

2 SUBTREAD COMPOUND (Internal layer)

The base compound with high mechanical & hysteretic properties is optimized to **reduce heat generation** during operation to ensure high integrity throughout the life cycle and low rolling resistance to **reduce fuel consumption** and at the same time it guarantees high resistance to penetration and cutting.



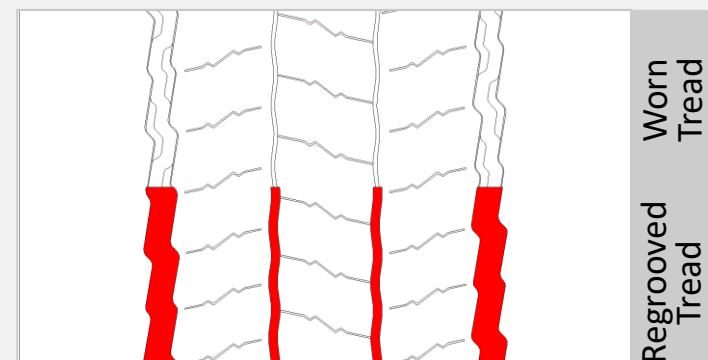
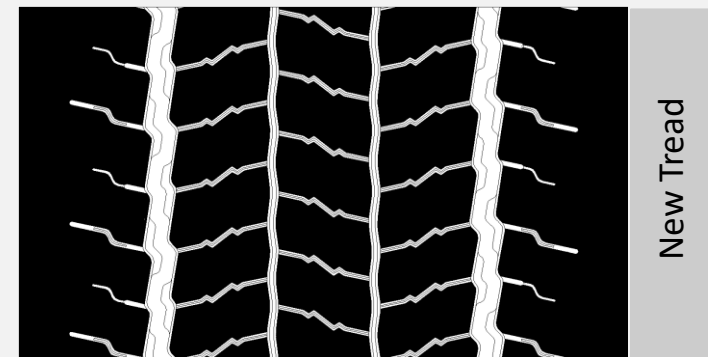
TECHNICAL DATA



| SIZE | 275/70 R22.5 All-position | 315/60 R22.5 All-position |
|-------------------------|---------------------------|---------------------------|
| IP CODE | 4099500 | 4099600 |
| LOAD INDEX / SPEED CODE | 152 / 148J | 156 / 150 J |
| PATTERN | U02 URBAN-e PRO M | U02 URBAN-e PRO M |
| EAN CODE | 8019227409956 | 8019227409963 |
| ROLLING RESISTANCE | B | B |
| WET GRIP | B | B |
| NOISE | A | A |
| NOISE DECIBEL | 69 db | 72 db |
| SNOWFLAKE | YES | YES |
| RFID | YES | - |
| SECTION WIDTH | 277 | 313 |
| TREAD GROOVE DEPTH | 16.0 | 13.0 |
| DIAMETER | 962 | 953 |
| STATIC RADIUS | 447 | 446 |
| ROLLING CIRC. | 2934 | 2888 |
| RIMS (*) | <u>7.50</u> [8,25] | <u>9.00</u> [9,75] |

*Underlined number: C measured rim

REGROVABILITY



| SIZE RANGE (W.MAX:8) | |
|----------------------|-------|
| SIZE | P MAX |
| 275/70 R 22.5 | 3,00 |
| 315/60 R 22.5 | 3,00 |

RADIO FREQUENCY IDENTIFICATION DEVICE (RFID)



RFID chip is a smart electronic component that receives and transmits radio signals (without cables). It is incorporated inside the tire and allows for simple identification and easy connection to tire management and tracking systems. RFID contains ISO-encoded unique tyre identification according to the SGTIN96 standard.

The presence of the RFID tag does not change the tire performance. This is an additional feature which, when fully used, enables:

Benefits



Time savings and productivity:

- digital and direct traceability of the tires;
- effective management and maintenance of the tires stock.



Tires monitoring e relative services:

- easy recording of performances kilometers over multiple tire lives;
- traceability of maintenance and reconstruction operations;
- facilitated and rapid recognition of the tires.



Stock optimization:

- simple and reliable inventory of tires stock.

Features

- Unique identity ed unfalsifiable for each tire.
- Possibility to insert inside the RFID tag more informations (by request).
- Duration of the RFID tag equal the duration of the carcass.
- Resistance of the tag RFID to retreadability operations to follow the carcasses until end of tire life.

Symbol on sidewall

FRONT SIDE

The RFID on PTG tyre is always located on DOT Date code side (outer sidewall).

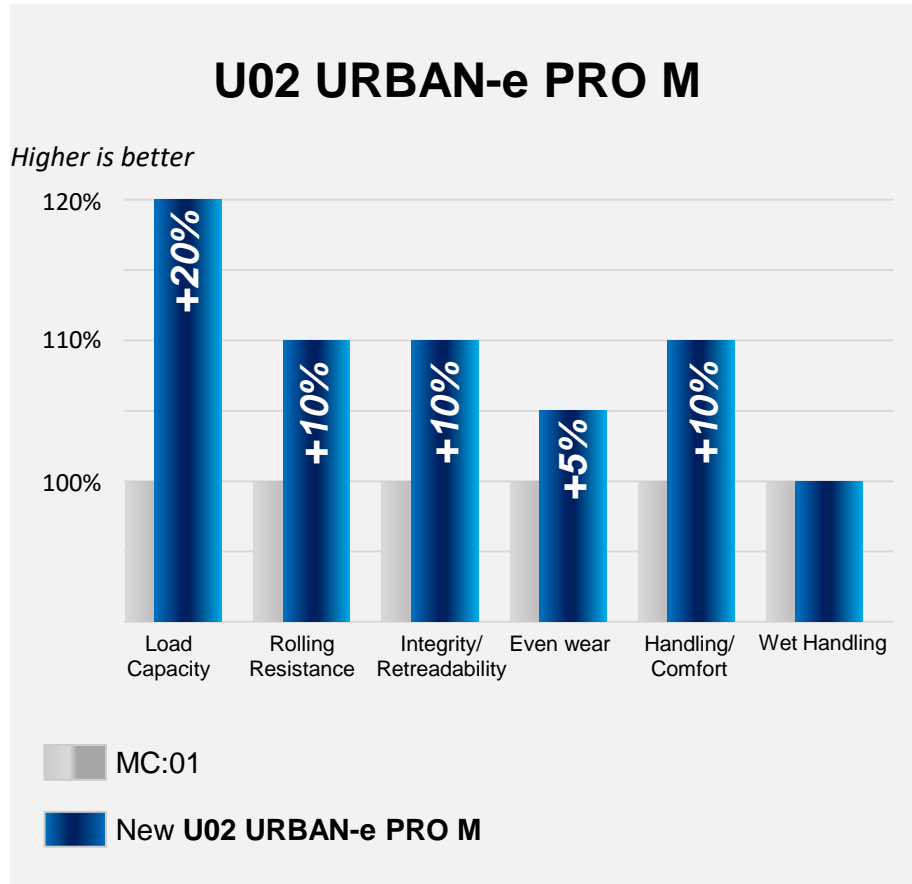


OPPOSITE SIDE

In the opposite side, is marked with "RFID on opposite side" (inner sidewall).



PERFORMANCES COMPARED WITH PREVIOUS MC:01



Key performances improved:

- Load capacity from **7,7** up to **8,1 tons**
- Rolling Resistance from **C** to **B** class
- Integrity and lifespan, **new reinforced sidewall design**
- Constant safety in all seasons (**3PMSF**)
- Improved **uneven wear**
(especially designed for electric vehicle torque)
- Handling / Comfort: Noise generation from **71** to **69dB**

MAIN COMPETITORS BENCHMARK ON MC:01 e-URBAN (275/70 & 315/60 R 22.5)



X Incity HLZ
X Incity Energy Z

275/70 R 22.5



U-AP 001

U-AP 002

275/70 R 22.5



URBAN HA3

Same pattern also for 315/60 R22,5

275/70 R 22.5

315/60 R 22,5



URBAN MAX MCA

275/70 R 22.5



SMART AU04+










4 grooves for 315/60 R22,5

15 275/70 R 22.5

315/60 R 22.5



MAIN COMPATITOR ANALYSIS

| SIZE | TYRE POSITION | BRAND | TREAD PATTERN |  |  |  | M+S |  | LOAD INDEX/ SPEED CODE |
|--------------|---------------|---|-------------------|---|---|---|-----|---|---------------------------|
| 275/70 R22.5 | All-position |  | U02 URBAN-e PRO M | B | B | A (69db) | √ | √ | 152 /148 J |
| | |  | X Incity HLZ | D | C | A (69db) | √ | √ | 150 /145 J |
| | | | X Incity Energy Z | C | C | A (71db) | √ | √ | 152 /148 J |
| | |  | U-AP 002 | B | B | A (69db) | √ | √ | 152 /148 J |
| | | | U-AP 001 | D | B | A (73db) | √ | √ | 150 /145 J |
| | |  | URBAN HA3 | D | B | A (70db) | √ | √ | 152/148 J |
| | |  | URBAN MAX MCA | D | C | A (71db) | √ | √ | 150 /145J (152/148E) |
| | |  | SMART AU04+ | D | B | A (67db) | √ | √ | 150 /145 J |
| 315/60 R22.5 | All-position |  | U02 URBAN-e PRO M | B | B | A (72db) | √ | √ | 156/150 J |
| | |  | URBAN HA3 | C | C | A (71db) | √ | √ | 154/148 J (156/150 F) |
| | |  | SMART AU04+ | C | B | A (73db) | √ | √ | 154/148 J |



Best on the market compared with respect to the main competitor on the market



U02 URBAN-e PRO M

NEW GENERATION OF URBAN TYRE SPECIFICALLY
DESIGN FOR ELECTRIC/ HYBRID VEHICLES



RDW



THE NETHERLANDS
(N E D E R L A N D)



COMMUNICATION

Concerning ⁽¹⁾ : ~~APPROVAL GRANTED~~
~~APPROVAL EXTENDED~~
~~APPROVAL REFUSED~~
~~APPROVAL WITHDRAWN~~
~~PRODUCTION DEFINITELY DISCONTINUED~~

of a type of tyre with regard to "rolling sound emission level" and/or "adhesion performance on wet surfaces" and/or "rolling resistance" pursuant to Regulation Number 117

Approval number ⁽²⁾: E4*117R02/11*4221*09

Suffix(es) ⁽³⁾: S2WR2

1. Manufacturer's name and address : PROMETEON TYRE GROUP S.r.l.
Viale Sarca, 222
20126 Milano (Italy)
2. If applicable, name and address of manufacturer's representative : not applicable
3. "Tyre class" of the type of tyre ⁽¹⁾ : ~~Class C1, class C2 or class C3~~
4. "Category of use" of the type of tyre ⁽¹⁾ : ~~Normal/Snow/Special~~
- 4.1. Snow tyre for use in severe snow conditions ⁽¹⁾ : ~~Yes/No~~
- 4.2. Traction tyre ⁽¹⁾ : ~~Yes/No~~
5. Tyre structure ⁽¹⁾ : ~~diagonal (bias ply)/radial~~
6. Tyre type designation :
 - 6.1. Brand(s) name(s)/Trade mark(s) of the type of tyre : **PIRELLI**
 - 6.2. Trade description(s)/Commercial name(s) of the type of tyre : **MC : 01**
PRT8
MC:01 e-URBAN
U02 URBAN-e PRO MULTIAxLE
7. Technical Service and, where applicable, test laboratory approved for purposes of approval or of verification of conformity tests : PIRELLI TYRE S.p.A.
Viale Piero e Alberto Pirelli, 25
20126 Milano (Italy)
8. Performance(s) approved : sound level at (~~stage 1~~/stage 2)⁽¹⁾, wet adhesion level, rolling resistance level (~~stage 1~~/stage 2)⁽¹⁾
- 8.1. Sound level of the representative tyre size, see paragraph 2.7. of this Regulation, as per item 7. of the test report in the Appendix 1 to Annex 3: 73 dB(A) at reference speed of 70 km/h⁽¹⁾



Approval number: E4*117R02/11*4221*09

8.2. Wet adhesion level of the representative tyre size, see paragraph 2.7. of this Regulation, as per item 7. of the test report in the Appendix to Annex 5 : 1.14 (G) using the vehicle method, ~~trailer method~~⁽¹⁾

8.3. Rolling Resistance level of the representative tyre size, see paragraph 2.7. of this Regulation, as per item 7. of the test report in the Appendix 1 to Annex 6 : 6.26 (N/kN)

8.4 Snow grip level of the representative tyre size, see paragraph 2.7. of Regulation No 117, as per item 7. of the test report in the Appendix ⁽⁴⁾ to Annex 7 : 1.67 (Snow Grip Index) using ~~brake on snow, spin traction on snow~~, acceleration method ⁽¹⁾

9. Number of report issued by that service : **TR 2013-021-R**
TR 2014 019 SG
TR-2017-020-W
TR-2017-074-S

10. Date of report issued by that service : **18/11/2013**
10/09/2014
02/02/2017
27/09/2017

11. Reason(s) of extension (if applicable) : Extension of type approval to new tread name

12. Any remarks : Upgrade of Regulation supplement number
Previous Approval number E4*117R02/09*4221*08

13. Place : Zoetermeer

14. Date : 05 March 2021

15. Signature :



R.F.R. Clement

16. Annexed to this communication are :

16.1. A list of documents in the approval file deposited at the Type Approval Authorities having delivered the approval and which can be obtained upon request ⁽⁵⁾ .

1. Information document number 2021-003-PR
2. Drawing of the tread pattern and sidewall

16.2. A list of tyre-size designations: Specify for each brand name/trademark and/or each trade description/Commercial name the list of tyre size designations and service descriptions, adding in case of Class C1 tyres whether “reinforced” (or “extra load”) or not.

⁽¹⁾ Strike out what does not apply

⁽²⁾ According to Schedule 4 to Revision 3 of the 1958 Agreement.

⁽³⁾ According to paragraphs 5.2.2. and 5.3.1.2. of this Regulation.

⁽⁴⁾ Appendix 2 for C1 and C2 tyres

Appendix 3 for C3 tyres

⁽⁵⁾ In the case of “snow tyre for use in severe snow conditions” a test report according to Appendix 2 of Annex 7 shall be submitted.

List of tyre sizes

Approval No.: E4*117R02/11*4221*09 Suffix(es): S2WR2
Annex to information document N° 2021-003-PR

Brand name (s) : PIRELLI

Trade description (s) : PRT8
MC : 01
MC:01 e-URBAN
U02 URBAN-e PRO MULTIAXLE

Tyre inscription (s) : Traction

| Tyre Class | list of sizes | Reg. 54 | Speed idx | Load idx | Tested | New size |
|------------|---------------|------------|-----------|----------------------|--------|----------|
| C3 | 275/70R22.5 | E3 002805 | J/E | 148/145 | R,SI | |
| | 275/70R22.5 | E3 003170 | J/E | (152/148) 150/148 | W | |
| | 275/70R22.5 | E4 0041833 | J | (152/148) 152/148 | | |
| | 315/60R22.5 | E4 0037248 | J | 156/150 | S | |

Date : 22/02/2021

(1)

S : tyre tested for Sound emission

W : tyre tested for Wet adhesion

R : tyre tested for rolling resistance

SI: tyre tested for Snow performance



RDW

Division Vehicle Regulation & Admission

THE NETHERLANDS
(N E D E R L A N D)



COMMUNICATION

Concerning:⁽¹⁾ ~~APPROVAL GRANTED~~
~~APPROVAL EXTENDED~~
~~APPROVAL REFUSED~~
~~APPROVAL WITHDRAWN~~
~~PRODUCTION DEFINITELY DISCONTINUED~~

of a type of tyre for commercial vehicles and their trailers pursuant to Regulation Number 54

Approval number: E4*54R00/23*41833*02

1. Manufacturer's name and address : PROMETEON TYRE GROUP S.r.l.
Viale Sarca, 222
20126 Milano (Italy)
2. Tyre type designation⁽²⁾ :
- 2.1 Brand name(s)/trademark(s) : PIRELLI
- 2.2 Trade description(s)/Commercial name(s) : PRT8
MC:01 e-URBAN
U02 URBAN-e PRO MULTIAXLE
3. If applicable, name and address of the manufacturer's representative : not applicable
4. Summarised description :
- 4.1. Tyre size designation : 275/70R22.5
- 4.2. Category of use : ~~normal~~/special/snow⁽¹⁾
- 4.3. Structure : ~~diagonal (bias ply)~~/radial⁽¹⁾
- 4.4. Tyre class : ~~Class C1, class C2 or class C3~~⁽¹⁾
- 4.5. Speed category symbol:
- 4.5.1. nominal : J
- 4.5.2. additional (if applicable) :
- 4.6. Load-capacity indices:
- 4.6.1. Corresponding to nominal speed : single 152,
twinned (dual) 148
- 4.6.2. Corresponding to additional speed : single
twinned (dual)



5. Technical Service and, where applicable, test laboratory approved for purposes of approval or of verification of conformity : PIRELLI TYRE S.p.A.
Viale Piero e Alberto Pirelli, 25
20126 Milano (Italy)
6. Date of report issued by that service : 22/01/2019
7. Number of report issued by that service : IZM-R54-001-2019
8. Reason(s) of extension (if applicable) : Extension of type approval because of modification of the tread pattern and of the tyre type designation.
9. Any remarks : N/A
10. Place : Zoetermeer
11. Date :
05 March 2021
12. Signature :



R.F.R. Clement

13. Annexed to this communication is a list of documents in the approval file deposited at the administrative service having delivered the approval and which can be obtained upon request.
- Application form, relating to ECE approval for a pneumatic tyre pursuant to Regulation number 54
 - The drawing of the tyre's sidewalls, tread and dimensioned cross-section
 - The test report as mentioned in item 7

⁽¹⁾ Strike out what does not apply

⁽²⁾ A list of brand name(s)/trademark(s) or Trade description(s)/Commercial name(s) may be annexed to this communication

THE NETHERLANDS
(N E D E R L A N D)CERTIFICATE ON CO₂ EMISSIONS AND FUEL CONSUMPTION RELATED
PROPERTIES OF A TYRE FAMILY

Communication concerning:

- granting⁽¹⁾
- ~~extension~~⁽¹⁾
- ~~refusal~~⁽¹⁾
- ~~withdrawal~~⁽¹⁾

of a certificate on CO₂ emission and fuel consumption related properties of a tyre family in accordance with Commission Regulation (EU) number 2017/2400, as last amended by Commission Regulation (EU) number 2019/318.

| | |
|---|---|
| Certification number | : e4*2017/2400*2019/318*T*0761*00 |
| Hash | : S/trpt40ehvaj3VhiAnUG3DP2LniVLQ1W2L3U DUofs0= |
| Reason for extension | : N/A |
| 1. Manufacturer's name and address | : Prometeon Tyre Group Srl Viale Sarca, 222 - 20126 Milano (Italy) |
| 2. If applicable, name and address of manufacturer's representative | : N/A |
| 3. Brand name/trade mark | : Pirelli |
| 4. Tyre type description | |
| a) Manufacturer's name | : Prometeon Tyre Group Srl |
| b) Brand name or trade mark | : Pirelli |
| c) Tyre class (in accordance with Regulation (EC) 661/2009) | : C3 |
| d) Tyre-size designation | : 275/70 R22.5 |

- e) Tyre structure (diagonal (bias-ply); radial) : Radial
- f) Category of use (normal tyre, snow tyre, special use tyre) : Snow
- g) Speed category (categories) : J
- h) Load-capacity index (indices) : 152/148
- i) Trade description/commercial name : U02 URBAN-e PRO MULTIAxLE
- j) Declared tyre rolling resistance coefficient : 5,0
5. Tyre identification code(s) and technology(ies) used to provide identification code(s), if applicable : N/A
- Technology : N/A
- Code : N/A
6. Technical Service and, where appropriate, test laboratory approved for purposes of approval or of verification of conformity tests : PIRELLI TYRE S.p.A.
Via Piero e Alberto Pirelli, 25 - 20126 Milano (Italy)
7. Declared values :
- 7.1. Declared rolling resistance level of the tyre (in N/kN rounded to the first decimal place, according to ISO 80000-1 Appendix B, section B.3, rule B (example 1)) : 5,0 [N/kN]
- 7.2. Tyre test load according to Regulation (EC) No 1222/2009 Annex I part A (85 % of single load, or 85 % of maximum load capacity for single application specified in applicable tyre standards manuals if not marked on tyre.) : 29580 [N]
- 7.3. Alignment equation : $Cr * 1,0105 - 0,0441$; $Cr * 1,0105 - 0,0441$
8. Any remarks : N/A



Certification number: e4*2017/2400*2019/318*T*0761*00

9. Place : Zoetermeer
10. Date : 28 July 2021
11. Signature :



R.F.R. Clement

12. Annexed to this communication are : - The Information Document section I and II
- The Test Report:
e4*2017/2400*2019/318*T*0761*00
dated : 08/07/2021
- XML file: e4*2017/2400*2019/318*T*0761*00

⁽¹⁾ Delete as appropriate.

THE NETHERLANDS
(N E D E R L A N D)

COMMUNICATION

Concerning ⁽¹⁾:

- ~~approval granted~~
- approval extended
- ~~approval refused~~
- ~~approval withdrawn~~
- ~~production definitely discontinued~~



of a type of tyre for motor vehicles pursuant to Regulation number 54.

Approval number: E4-54R-0038942

Extension number: 01

1. Manufacturer's name and address : **BRIDGESTONE EUROPE NV/SA**
Kleine Kloosterstraat 10
1932 Zaventem, Belgium
2. Tyre type designation ⁽²⁾ : -
 - 2.1. Brand name(s)/trademark(s) : **BRIDGESTONE**
 - 2.2. Trade description (s)/Commercial name(s)/ : **COACH - AP 001**
3. If applicable, name and address of the manufacturer's representative : -
4. Summarized description:
 - 4.1. Size of tyre : **295/80 R22.5**
 - 4.2. Category of use : ~~normal~~/snow/special ⁽¹⁾
 - 4.3. Structure : ~~diagonal (bias ply)~~/radial ⁽¹⁾
 - 4.4. Tyre class : ~~E2~~/C3 ⁽¹⁾
 - 4.5. Speed category symbol:
 - 4.5.1. nominal : **M**



- 4.5.2. additional (if applicable) : -
- 4.6. Load-capacity indices:
- 4.6.1. Corresponding to nominal speed:
- single : **154**
 - twinned (dual) : **149**
- 4.6.2. Corresponding to additional speed:
- single : -
 - twinned (dual) : -
5. Technical service and, where applicable, test laboratory approved for purposes of approval or of verification of conformity : **BRIDGESTONE EUROPE NV/SA
ITALIAN BRANCH TECHNICAL CENTER
Via del fosso del Salceto13/15, 00128 Rome – ITALY**
6. Date of report issued by that service : **2017/12/12 – 2017/12/15**
7. Number of report issued by that service : **MS-17-12-43**
8. Reason(s) for extension (if applicable) : **New commercial name**
9. Any remarks : **The ECE drawing update**
10. Place : Zoetermeer
11. Date : 18 February 2019
12. Signature : 
T.H.K. Spatz 
13. Annexed to this communication is a list of documents in the approval file deposited at the administrative service having delivered the approval and which can be obtained upon request.
- Application form relating to ECE approval for a pneumatic tyre pursuant to Regulation number 54.
 - The drawing of the tyre's sidewalls, tread and dimensioned cross-section.
 - The test report as mentioned in item 7.

⁽¹⁾ Strike out what does not apply.

⁽²⁾ A list of brand name(s)/trademark(s) or Trade description(s)/ Commercial name(s) may be annexed to this communication.



СЕРТИФИКАТ СООТВЕТСТВИЯ

№ ЕАЭС RU C- JP. HX27.B.03570/22

Серия RU № 0366446

ОРГАН ПО СЕРТИФИКАЦИИ

ПНЕВМАТИЧЕСКИХ ШИН Автономная Некоммерческая Организация «Шинтест»

Место нахождения (адрес юридического лица): 141804, Россия, Московская область, город Дмитров, улица Вокзальная, дом 18;

Адрес места осуществления деятельности: 141801, Россия, Московская область, город Дмитров, улица Промышленная, дом 5

телефон/факс: +7(496) 22-430-07, адрес электронной почты: shintest@inbox.ru; аттестат аккредитации

№ РОСС RU. 0001. 11HX27, выдан Федеральной службой по аккредитации, действует с 12.05.2015 г.

ЗАЯВИТЕЛЬ

Общество с ограниченной ответственностью «Бриджстоун Тайер Мануфэкчуринг СНГ»

Место нахождения (адрес юридического лица), адрес места осуществления деятельности: 432072, Россия, Ульяновская область,

город Ульяновск, 11-й проезд Инженерный, дом 52, строение 1. Телефон +7(8422) 29-01-01/(8422) 29-01-00

Адрес электронной почты: feedback@bridgestone.ru

Основной государственный регистрационный номер 1137325002870

ИЗГОТОВИТЕЛЬ

«BRIDGESTONE CORPORATION»

Место нахождения (адрес юридического лица): Япония, 1-1, Kyobashi 3-chome Chuo-ku, Tokyo 104-8340.

(Адреса мест осуществления деятельности по изготовлению продукции согласно Приложению №1 0864029)

ПРОДУКЦИЯ

ШИНЫ ПНЕВМАТИЧЕСКИЕ ДЛЯ ЛЕГКОВЫХ АВТОМОБИЛЕЙ

Торговых марок «BRIDGESTONE», «FIRESTONE» с посадочным диаметром 13 – 22", категории скорости H, Q, R, S, T, V, W, Y, (Y). Класс C1, C2 (согласно Приложениям №2 0864030, №3 0864031, №4 0864032, №5 0864033, №6 0864034, №7 0864035, №8 0864036, №9 0864037, №10 0864038, №11 0864039, №12 0864040, №13 0864041, №14 0864042, №15 0864043, №16 0864044, №17 0864045, №18 0864046, №19 0864047, №20 0864048, №21 0864049, №22 0864050, №23 0864051, №24 0864052, №25 0864053, №26 0864054, №27 0864055, №28 0864056), изготавливаются по технической спецификации завода изготовителя. Серийный выпуск

КОД ТН ВЭД ЕАЭС

4011 10 000 3

4011 10 000 9

СООТВЕТСТВУЕТ ТРЕБОВАНИЯМ

Технический регламент Таможенного союза ТР ТС 018/2011 «О безопасности колесных транспортных средств», утвержден Решением КТС от 9 декабря 2011 г. №877;

Правила ООН №30;

Правила ООН №117 (в отношении уровня звука шин при качении, сцепления с мокрым покрытием и сопротивления качению)

СЕРТИФИКАТ СООТВЕТСТВИЯ ВЫДАН НА ОСНОВАНИИ

- сообщений об официальном утверждении типа шин «Е4» на соответствие Правилам ООН № 30, Правилам ООН № 117, выданных Министерством транспорта общественных работ и водного хозяйства Нидерландов;

- сообщений об официальном утверждении типа шин «Е20» на соответствие Правилам ООН №30, выданных Министерством транспорта, строительства и морской экономики Польши;

- сертификатов соответствия системы менеджмента качества изготовителей шин;

Схема сертификации – 2с*. применена с учетом примечания 1 к приложению № 10 к ТР ТС 018/2011.

ДОПОЛНИТЕЛЬНАЯ ИНФОРМАЦИЯ

В «шинах, пригодных для использования в спущенном состоянии», или «самонесущих шинах» перед маркировкой диаметра обода проставляется буква «F» (Run Flat). В соответствии с Правилами ООН № 30 (п.3 п.п.3.1.8) усиленные шины могут иметь на боковине дополнительное обозначение «REINFORCED», «XL» или «EXTRA LOAD». (На шинах, пригодных для эксплуатации на скоростях свыше 240 км/ч, но не более 300 км/ч буква «R», указанная перед маркировкой диаметра обода, может быть заменена буквами «ZR»). Возможно написание перед типоразмером буквы «P» (Passanger – легковая шина). Условия, сроки хранения, гарантийный срок службы шин согласно технической документации изготовителя. Сведения о маркировке шин знаком официального утверждения типа указаны в Приложениях №2-28.

СРОК ДЕЙСТВИЯ С 15.02. 2022

ПО 14.02. 2024

ВКЛЮЧИТЕЛЬНО

Руководитель (уполномоченное
лицо) органа по сертификации

(подпись)

Эксперт (эксперт-аудитор)
(эксперты (эксперты-аудиторы))

(подпись)



Мартынова Ольга Анатольевна

(Ф.И.О.)

Спиридонова Наталья Викторовна

(Ф.И.О.)

ПРИЛОЖЕНИЕ

Приложение №1

RU C- JP. HX27. B.03570/22

К СЕРТИФИКАТУ СООТВЕТСТВИЯ № ЕАЭС

Серия **RU** № **0864029**

Перечень предприятий-изготовителей продукции, на которую распространяется действие сертификата соответствия, входящих в состав транснациональной компании.

| Полное наименование предприятия-изготовителя | Адрес (место нахождения) |
|--|---|
| «Общество с ограниченной ответственностью «Бриджстоун Тайер Мануфэкчуринг СНГ» | 432072, Россия, Ульяновская область, город Ульяновск, 11 проезд Инженерный, дом 52, строение 1. Сертификат соответствия IATF16949:2016 № 10409173, Lloid Register Quality Assurance, действует до 30.11.2024 г. |
| «Bridgestone Tatabanya Termelo KFT» | Венгрия, H-2851 Környe Köhid út 1, Hungary. Сертификат соответствия IATF 16949:2016 № 0078316, Lloid Register Quality Assurance, действует до 08.02.2024 г. GLN - 4603720900863 |
| «Bridgestone Tire Manufacturing Vietnam Limited Liability Company» | Вьетнам, Land plot CN3.6-CN4.1 Dinh Vu Industrial Zone, Dong Hai 2 Ward, Hai District, Hai Phong. Сертификат соответствия ISO 9001:2015, № FM700694, выдан Royal Charter, действует до 24.04.2022 г. GLN - 4603720900726 |
| «P.T. BRIDGESTONE TIRE INDONESIA» | Индонезия, Jalan Raya Bekasi Km. 27, Kelurahan Harapan Jaya, Bekasi, Jawa Barat 17124 Bekasi. Сертификат соответствия IATF 16949 No. 0384827, действует до 04.02.2024 г. GLN - 4603720900764 |
| «Bridgestone Hispania Manufacturing S.L.» | Испания, Barrio Urbi s/n 48970 Basauri (Vizcaya). Сертификат соответствия IATF16949:2016 №10328774, выдан Lloid Register Quality Assurance, действителен до 24.01.2024 г. GLN - 4603720900900 |
| «Bridgestone Hispania Manufacturing, S.L.» | Испания, Carretera Santander Oviedo Km 28, 39530 Puente San Miguel – Cantabria. Сертификат ISO 9001:2015 № 10404207, выдан Lloid Register Quality Assurance, действителен до 11.12.2024 г. GLN - 4603720900917 |
| «Bridgestone Hispania Manufacturing, S.L.» | Испания, Crta. Madrid – irin Km 243, 09007 Gamonal – Burgos. Сертификат соответствия IATF16949:2016 № 10362959, Lloid Register Quality Assurance, действует до 18.05.2024 г. GLN - 4603720900924 |
| «Bridgestone Europe NV/SA-Italian Branch-Technical Center» | Италия, Via del Fosso del Salceto, 13-15-00128 Castel Romano (Rome). Сертификат соответствия ISO 9001:2015, № 10351427, выдан Lloid Register Quality Assurance, действителен до 30.04.2024 г. GLN - 4603720900948 |
| «Bridgestone Tire Operations» | Канада, 1200 Boulevard Firestone, Joliette, Quebec, J6E 2W5. Сертификат соответствия IATF 16949:2016 № 0386034, выдан Intertek, действителен до 18.02.2024 г. GLN - 4603720900955 |
| «Bridgestone Poznan Sp. Z O.O.» | Польша, ul. Bałtycka 65, 61-017 Poznan. Сертификат соответствия IATF16949:2016 № 10350799, выдан Lloid Register Quality Assurance, действителен до 07.04.2024 г. GLN - 4603720900887 |
| «Bridgestone Stargard Sp. Z O.O.» | Польша, ul. Most Kemienny 7 73-110 Stargard Szczecinski. Сертификат соответствия IATF16949:2016 № 10368665, Lloid Register Quality Assurance, действует до 15.06.2024 г. GLN - 4603720900870 |
| «Bridgestone Americas Product Development Group – Tire Operations» | США, 10 East Firestone Boulevard, Akron, Ohio, 44317. Сертификат соответствия ISO 9001:2015, №0106161-01, выдан Intertek Testing Services NA Inc., действителен до 04.03.2024 г. GLN - 4603720900986 |
| «Bridgestone Americas Tire Operations» | США, 3001 Firestone Parkway, Wilson, North Carolina, 27893. Сертификат соответствия IATF 16949:2016 №0393776, выдан Intertek, действителен до 11.04.2024 г. GLN - 4603720900979 |
| «Bridgestone Tire Manufacturing (Thailand) Co., Ltd.» | Таиланд, 700/622 Moo 4, Tambol Bankao, Amphur Panthong, Chonburi, 20160. Сертификат соответствия ISO 9001:2015 № 10376182, выдан Lloid Register Quality Assurance, действителен до 07.07.2024 г. GLN - 4603720900771 |
| «THAI BRIDGESTONE CO., LTD. (NONGKHAE PLANT)» | Таиланд, 75 MOO 2, PHANOLYOTHIN RD., (KM. 82), TAMBOL PAITAM, AMPHUR NONGKHAE, SARABURI, 18140. Сертификат соответствия ISO 9001:2015 № TH016543, BUREAU VERITAS Certification, действует до 22.03.2024 г. GLN - 4603720900757 |
| «Bridgestone Taiwan Co., Ltd» | Тайвань, No. 1-1, Wenhua Rd., Feng Shan Village, Hukou Township, Hsinchu Country Taiwan, R.O.C. Post Code:303. Сертификат соответствия IATF 16949 № 0394044, выдан TUV SUD Management Service GmbH, действителен до 06.04.2024 г. GLN - 4603720900788 |
| «BRISA BRIDGESTONE SABANCI LASTIK SANAYI VE TICARET A.S.» | Турция, Ali Kahya Fatih Mah. Sanayi CAD. NO 98 41310 IZMIT, KOCAELI. Сертификат соответствия IATF16949 № 392675 выдан BUREAU VERITAS, действителен до 01.04.2024 г. GLN - 4603720900856 |
| «BRIDGESTONE CORPORATION, TOCHIGI PLANT» | Япония, 10, KAMINAKANO, NASUSHIOBARA-SHI, TOCHIGI-KEN, 329-3154. Сертификат соответствия IATF16949 № 0409402 выдан BUREAU VERITAS, действителен до 01.07.2024 г. GLN - 4603720900795 |
| «BRIDGESTONE CORPORATION HOFU PLANT» | Япония, 100, Hamakata, Hofu-SHI, Yamaguchi-ken, 747-0833. Сертификат соответствия IATF 16949 № 385389, Bureau Veritas Certification, действителен до 08.02.2024 г. GLN - 4603720900825 |
| «BRIDGESTONE CORPORATION, AMAGI PLANT» | Япония, 2011, OTA, ASAKURA-SHI, FUKUOKA-KEN, 838-0051. Сертификат соответствия IATF16949 № 332288 выдан BUREAU VERITAS, действителен до 10.03.2022 г. GLN - 4603720900801 |
| «BRIDGESTONE CORPORATION NASU PLANT» | Япония, 3-1, HIGASHIYAMATO-CHO, NASUSHIOBARA-SHI, TOCHIGI-KEN, 325-0041. Сертификат соответствия ISO 9001:2015 № 4207448, BUREAU VERITAS Certification, действует до 09.11.2021 г. GLN - 4603720900818 |
| BRIDGESTONE CORPORATION HEAD OFFICE AND TECHNICAL CENTER | Япония, 3-1-1, OGAWAHIGASHI-CHO, KODAIRA-SHI, TOKYO, 187-8531. Сертификат соответствия ISO 9001:2015 № 4575770, BUREAU VERITAS Certification, действует до 31.12.2023 г. GLN - 4603720900832 |

Руководитель (уполномоченное лицо) органа по сертификации

Эксперт (эксперт-аудитор)
(эксперты (эксперты-аудиторы))

(подпись)

(подпись)



Мартынова Ольга Анатольевна

(Ф.И.О.)

Спиридонова Наталья Викторовна

(Ф.И.О.)

ПРИЛОЖЕНИЕ

Приложение №10

К СЕРТИФИКАТУ СООТВЕТСТВИЯ № ЕАЭС RU C- JP. HX27. B.03570/22

Серия **RU** № **0864038**

Наименование и обозначение продукции

| Код ТН ВЭД | ШИНЫ ПНЕВМАТИЧЕСКИЕ ДЛЯ ЛЕГКОВЫХ АВТОМОБИЛЕЙ Торговых марок «BRIDGESTONE», «FIRESTONE» | Документы, подтверждающие соответствие |
|------------|---|---|
|------------|---|---|

4011 10 000 3

4011 10 000 9

| | | | | | |
|-------------|-----------|------|---------------|-----------------------|-----------------------|
| Bridgestone | 205/45R17 | 88V | BLIZZAK LM005 | E4*30R02/20*113129*00 | E4*117R02/10*10616*09 |
| Bridgestone | 205/65R15 | 94H | BLIZZAK LM005 | E4*30R02/20*113130*00 | E4*117R02/10*10616*09 |
| Bridgestone | 205/65R15 | 94T | BLIZZAK LM005 | E4*30R02/20*113131*00 | E4*117R02/10*10616*09 |
| Bridgestone | 215/45R17 | 91V | BLIZZAK LM005 | E4*30R02/20*113134*00 | E4*117R02/10*10616*09 |
| Bridgestone | 215/65R16 | 98H | BLIZZAK LM005 | E4*30R02/20*113136*01 | E4*117R02/10*10616*09 |
| Bridgestone | 215/65R16 | 102H | BLIZZAK LM005 | E4*30R02/20*113137*00 | E4*117R02/10*10616*09 |
| Bridgestone | 215/70R16 | 100T | BLIZZAK LM005 | E4*30R02/20*113139*02 | E4*117R02/10*10616*09 |
| Bridgestone | 225/55R17 | 97H | BLIZZAK LM005 | E4*30R02/20*113143*00 | E4*117R02/10*10616*09 |
| Bridgestone | 225/55R17 | 101V | BLIZZAK LM005 | E4*30R02/20*113144*02 | E4*117R02/10*10616*09 |
| Bridgestone | 225/60R17 | 99H | BLIZZAK LM005 | E4*30R02/20*113145*00 | E4*117R02/10*10616*09 |
| Bridgestone | 225/60R17 | 103V | BLIZZAK LM005 | E4*30R02/20*113146*00 | E4*117R02/10*10616*09 |
| Bridgestone | 235/65R17 | 108H | BLIZZAK LM005 | E4*30R02/20*113151*00 | E4*117R02/10*10616*09 |
| Bridgestone | 235/65R17 | 108V | BLIZZAK LM005 | E4*30R02/20*113426*00 | E4*117R02/10*10616*09 |
| Bridgestone | 185/60R15 | 84T | BLIZZAK LM005 | E4*30R02/20*113427*00 | E4*117R02/10*10616*09 |
| Bridgestone | 225/65R17 | 102H | BLIZZAK LM005 | E4*30R02/20*113457*00 | E4*117R02/10*10616*09 |
| Bridgestone | 225/65R17 | 106H | BLIZZAK LM005 | E4*30R02/20*113458*00 | E4*117R02/10*10616*09 |
| Bridgestone | 215/55R16 | 93H | BLIZZAK LM005 | E4*30R02/20*113465*00 | E4*117R02/10*10616*09 |
| Bridgestone | 215/55R16 | 97H | BLIZZAK LM005 | E4*30R02/20*113466*01 | E4*117R02/10*10616*09 |
| Bridgestone | 215/55R16 | 97V | BLIZZAK LM005 | E4*30R02/20*113467*00 | E4*117R02/10*10616*09 |
| Bridgestone | 265/50R19 | 110V | BLIZZAK LM005 | E4*30R02/20*113480*00 | E4*117R02/10*10616*09 |
| Bridgestone | 205/60R16 | 92H | BLIZZAK LM005 | E4*30R02/19*113703*00 | E4*117R02/10*10616*09 |
| Bridgestone | 215/60R17 | 100V | BLIZZAK LM005 | E4*30R02/19*113704*01 | E4*117R02/10*10616*09 |
| Bridgestone | 215/55R17 | 98V | BLIZZAK LM005 | E4*30R02/20*113705*01 | E4*117R02/10*10616*09 |
| Bridgestone | 215/55R17 | 98H | BLIZZAK LM005 | E4*30R02/19*113706*00 | E4*117R02/10*10616*09 |
| Bridgestone | 215/60R17 | 96H | BLIZZAK LM005 | E4*30R02/19*113707*00 | E4*117R02/10*10616*09 |
| Bridgestone | 225/50R17 | 98H | BLIZZAK LM005 | E4*30R02/19*113708*00 | E4*117R02/10*10616*09 |
| Bridgestone | 205/55R16 | 94H | BLIZZAK LM005 | E4*30R02/19*113709*00 | E4*117R02/10*10616*09 |
| Bridgestone | 195/60R16 | 89H | BLIZZAK LM005 | E4*30R02/20*113712*00 | E4*117R02/10*10616*09 |
| Bridgestone | 205/50R17 | 93V | BLIZZAK LM005 | E4*30R02/20*113720*00 | E4*117R02/10*10616*09 |
| Bridgestone | 245/40R18 | 97V | BLIZZAK LM005 | E4*30R02/20*113722*00 | E4*117R02/10*10616*09 |

Руководитель (уполномоченное
лицо) органа по сертификации

Эксперт (эксперт-аудитор)
(эксперты (эксперты-аудиторы))

(подпись)

(подпись)



Мартынова Ольга Анатольевна
(ф.и.о.)

Спиридонова Наталья Викторовна
(ф.и.о.)