

**gama17**  
reaching new horizons

## ordering information

Developed portfolio

Reference	Total length (mm)	Extra supply part length (mm)	Super flexible part (mm)	Flexible part (mm)	Rigid part (mm)	Proximal outer diameter	Distal outer diameter	Internal diameter	Number of ORX markers	Tip shape
<b>gama17</b> GAMA17_D	1600	50	200	180	1170	2.5 F (0.85mm)	2.2F (0.74mm)	.017" (0.43mm)	2	Straight & shapeable
GAMA17_D_S	1600	100	230	100	1170	2.5 F (0.85mm)	2.2F (0.74mm)	.017" (0.43mm)	2	

## gama17 delivery compatibilities

Compatibility with devices frequently used during intravascular procedures

**Flow diverter:** silk vista baby

**Stent:** leo+ baby\*

**Stentriever:** catch+ mini & catchview mini\*

**Coils:** optima\*

Compatibility with DMSO<sup>4</sup>

Compatible with DMSO<sup>4</sup>

## gama17 microcatheter is supplied with

a shaping mandrel

a pass valve (all references)

References:

1 Polytetrafluoroéthylène. 2 Aneurysm. 3 Arterioveinous Malformation. 4 Dymethyl sulfoxide. 5 Accute Ischemic Stroke

\*other devices compatible with a .017" microcatheter – check product labels

The Gama reinforced microcatheters are intended for use in interventional radiology procedures in the vascular and neurovascular system for: the injection of diagnostic or therapeutic products, the insertion of compatible pushable coils or detachable coils, the insertion of compatible intracranial self-expandable stents, the insertion of compatible thrombo-embolectomy devices. Class III CE0297 in compliance with Medical Device Directive (MDD 93/42/EEC amended by 2007/47/EC). Manufactured by BALT EXTRUSION SAS. Carefully read the instructions for use before use. First CE-Mark: 2019. CATCH+ and CATCHView are designed for use in the flow restoration of patients with ischemic stroke due to large intracranial vessel occlusion. They are indicated to restore blood flow in the neurovasculature of patients who are ineligible for intravenous tissue plasminogen activator (IV tPA), who fail IV tPA therapy or as a supplement treatment of initiated IV tPA therapy. The CATCH+ and CATCHView thromboembolectomy devices should only be used by physicians trained in interventional neuroradiology and treatment of ischemic stroke. Class III CE0297 in compliance with Medical Device Directive (MDD 93/42/EEC amended by 2007/47/EC). Manufactured by BALT EXTRUSION SAS. Carefully read the instructions for use before use. Not reimbursed. First CE marking: 2012 (CATCH+), 2018 (CATCHView). The self-expandable LEO+/LEO+ Baby stent is designed for the treatment of intracranial aneurysms in association with embolization coils. Class III CE0297 in compliance with Medical Device Directive (MDD 93/42/EEC amended by 2007/47/EC). Manufactured by BALT EXTRUSION SAS. Carefully read the instructions for use before use. First CE marking: 2007 (LEO+), 2012 (LEO+ Baby). The self-expandable SILK Vista Baby are designed for the treatment of intracranial aneurysms. Class III CE0297 in compliance with Medical Device Directive (MDD 93/42/EEC amended by 2007/47/EC). Manufactured by BALT EXTRUSION SAS. Carefully read the instructions for use before use. Not reimbursed. First CE marking: 2012. The Optima Coil System is intended for use in the peripheral and neurovasculature to endovascularly obstruct or occlude blood flow in vascular abnormalities of the neurovascular and peripheral vessels. Class III CE0297 in compliance with Medical Device Directive (MDD 93/42/EEC amended by 2007/47/EC). Manufactured by BALT USA LLC. Carefully read the instructions for use before use. First CE marking: 2017. The content of this document, in particular data, information, trademarks and logos is BALT SAS and affiliate's sole property. ©2019 BALT SAS and affiliates, all rights reserved. All representation and/or reproduction, whether in part or in full, is forbidden and would be considered a violation of BALT SAS and affiliates' copyrights and other intellectual proprietary rights. This document with associated pictures is non-contractual and is solely dedicated to healthcare professionals and BALT's distributors (BALT's supplier's distributors). The products commercialized by BALT shall exclusively be used in accordance with the instructions for use included in the boxes. DC051GB (08/19).

Balt

10, rue de la Croix Vigneron, 95160 Montmorency, France

Tél. : +33 (0)1 39 89 46 41

Fax : +33 (0)1 34 17 03 46

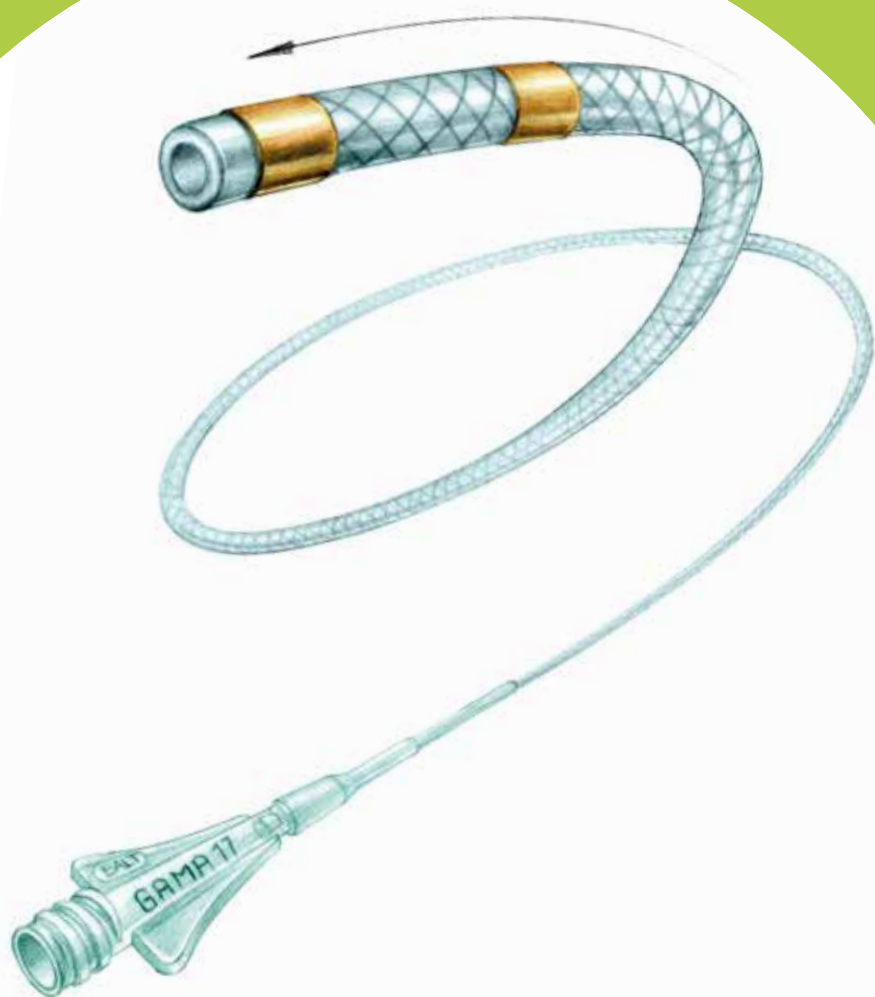
www.balt.fr



# gama17

## Reaching new horizons

Intended for use in interventional radiology procedures in the vascular and neurovascular system for: the injection of diagnostic or therapeutic products, the insertion of compatible pushable coils or detachable coils, the insertion of compatible intracranial self-expandable stents, the insertion of compatible thrombo-embolectomy devices.



4 transition zones

8 flat nitinol wires & 1 stainless steel wire

Ease of trackability through the vasculature

Smooth navigation

provided by the 4 transition zones of suppleness and the hydrophilic coating

Gentle access to tortuous anatomy

allowed by the extra supple tip and enhanced with the soft version

Controlled supportive deliverability

Support for stenting

improved by the coil support and 8 flat nitinol wires

Kink resistance

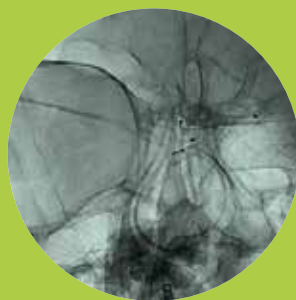
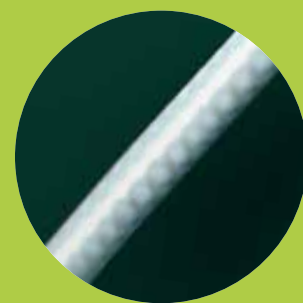
thanks to a durable sleeve

Smooth deliverability

ensured by the PTFE<sup>1</sup> internal coating

Visibility

2 gold radiopaque markers at 3 cm for coiling



Answering all your daily application needs

- AN<sup>2</sup>: leo+ baby, silk vista baby & optima
- AVM<sup>3</sup>: DMSO<sup>4</sup> compatible
- AIS<sup>5</sup>: catch+ mini & catchview mini

access treatment